



**2016-17**  
**SEASON**



facebook.com/wculive  
twitter.com/wculive

ON BEHALF of West Chester University, I am pleased to welcome you to our 2016-17 season of cultural and community programming.

The University has enjoyed strong visual and performing arts programs since its earliest days and it has built on that tradition to become a regional leader in cultural programming. Here at West Chester University, you can find the very best in music, Theatre, dance and art, rivaling anything you might find in New York, Philadelphia, or Washington.

Our reputation speaks for itself. Last year, more than 100,000 people attended a variety of cultural events on our campus, including an evening of Samba drummers, traditional Irish music, dance performances, lectures, art exhibits, and much more.

In my role as interim president, I am happy to host the President's Speaker Series, which brings extraordinary public figures to WCU. Last year, the series featured journalist Dan Rather in the fall and husband and wife political consultants James Carville and Mary Matalin in the spring. On September 30, Garrison Keillor will join us for an evening of stories and "news from Lake Wobegon."

I appreciate the support that our neighbors throughout the region show for the University's cultural programs and the students, faculty, staff, and visiting artists who present them. Such support and our regional arts collaborations — which include partnerships with A Cappella Pops, Gilbert and Sullivan Society, and Brandywine Ballet — are essential to our success. We also have formed partnerships around the country and around the globe, with WCU faculty, staff, and students bringing their talents to Norway, Poland, Austria, Great Britain, and many other locales.

Our 2016-17 season of cultural and community events promises to be outstanding, with attractions for every member of the family. I invite you to experience the arts at WCU!

Sincerely,

Christopher M. Fiorentino

Interim President, West Chester University of Pennsylvania

## Table of Contents

<b>President's Speaker Series</b>	<b>3</b>
<b>WCU Live!</b>	<b>4</b>
<b>Event Parking Information</b>	<b>11</b>
<b>Theatre &amp; Dance</b>	<b>12</b>
<b>Art Exhibitions</b>	<b>15</b>
<b>School of Music Concert Series</b>	<b>16</b>
<b>Special Events</b>	<b>21</b>
<b>Community Partners</b>	<b>23</b>
<b>Lectures</b>	<b>24</b>
<b>Planetarium</b>	<b>25</b>
<b>Full Season Schedule</b>	<b>26</b>

*This publication provided  
courtesy of the Department of  
Cultural and Community Affairs.*



A close-up portrait of Garrison Keillor, an older man with grey hair and glasses, wearing a black t-shirt. He is looking slightly to the side with a thoughtful expression.

**Garrison Keillor**

A close-up portrait of Linda Ronstadt, a woman with short, wavy brown hair, looking directly at the camera with a slight smile. The background is a warm, out-of-focus red and orange.

**Linda Ronstadt**

## **PRESIDENT'S SPEAKER SERIES**

**The President's Speaker Series will be held in Emilie K. Asplundh Concert Hall, Philips Memorial Building  
Reserved Seating for both events: Orchestra \$25 / Balcony \$20**

### **An Evening with Garrison Keillor**

**Friday, September 30, 2016, 8:00 pm**

One of the most prolific American storytellers of all time, Garrison Keillor is a writer and humorist best known for his popular live radio variety show, *A Prairie Home Companion*, which attracts more than 4 million listeners on more than 600 public radio stations each week.

Offering insight and stories from his journey as one of America's greatest storytellers, Keillor captivates audiences with his unique blend of comedy, charisma, and wisdom.

### **An Evening with Linda Ronstadt**

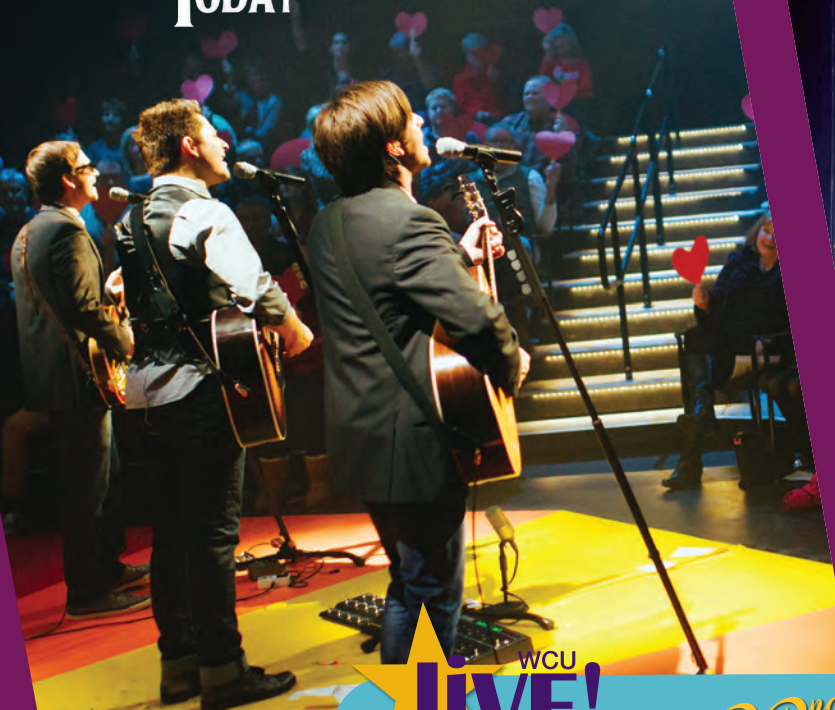
**Friday, March 10, 2017, 8:00 pm**

Grammy-winning musician Linda Ronstadt is arguably the most versatile vocalist of the modern era. She has broadened the latitudes of the pop singer, expanding her canvas to include country, rock and roll, big band, jazz, opera, Broadway standards, and Mexican and Afro-Cuban influences. Although she sang her last concert before retiring in 2009, Linda has since released her autobiography, *Simple Dreams: A Musical Memoir*, and was elected to the Rock and Roll Hall of Fame in 2013.

Part interview, part presentation, Linda will recount episodes from various times in her long career, as well as her thoughts on music and what it has meant in her life.

**PURCHASE TICKETS** | 610-436-2266 | [www.wcupatix.com](http://www.wcupatix.com)

# YESTERDAY the interactive beatles experience AND TODAY



WCU  
**LIVE!**

WCU  
**LIVE!**  
WEST CHESTER UNIVERSITY

Our **22<sup>nd</sup>** Season!

WCU  
**LIVE!**

WCU  
**LIVE!**

## Yesterday and Today:

### *The Interactive Beatles Experience*

Friday, September 23, 2016 | 7:30 pm

Emilie K. Asplundh Concert Hall

Orchestra: Adults \$20 – Seniors/Students \$15

Balcony: Adults \$17 – Seniors/Students \$13

What's your favorite Beatles song? Audience members are invited to fill out a card prior to the show that answers this question and why they chose that song. The McGuigan brothers create a set list using these responses and share the audience's stories through the music of the Beatles. Along with personal stories of their own lives and upbringing, the McGuigans capture the cultural importance of the Beatles' music and how it touches all of us individually. Don't miss this one-of-a-kind, interactive Beatles experience!

Learn more: [www.billymcguigan.com](http://www.billymcguigan.com)

4 **PURCHASE TICKETS** | 610-436-2266 | [www.wcupatix.com](http://www.wcupatix.com)



## Steep Canyon Rangers

Friday, November 4, 2016 | 7:30 pm

Emilie K. Asplundh Concert Hall

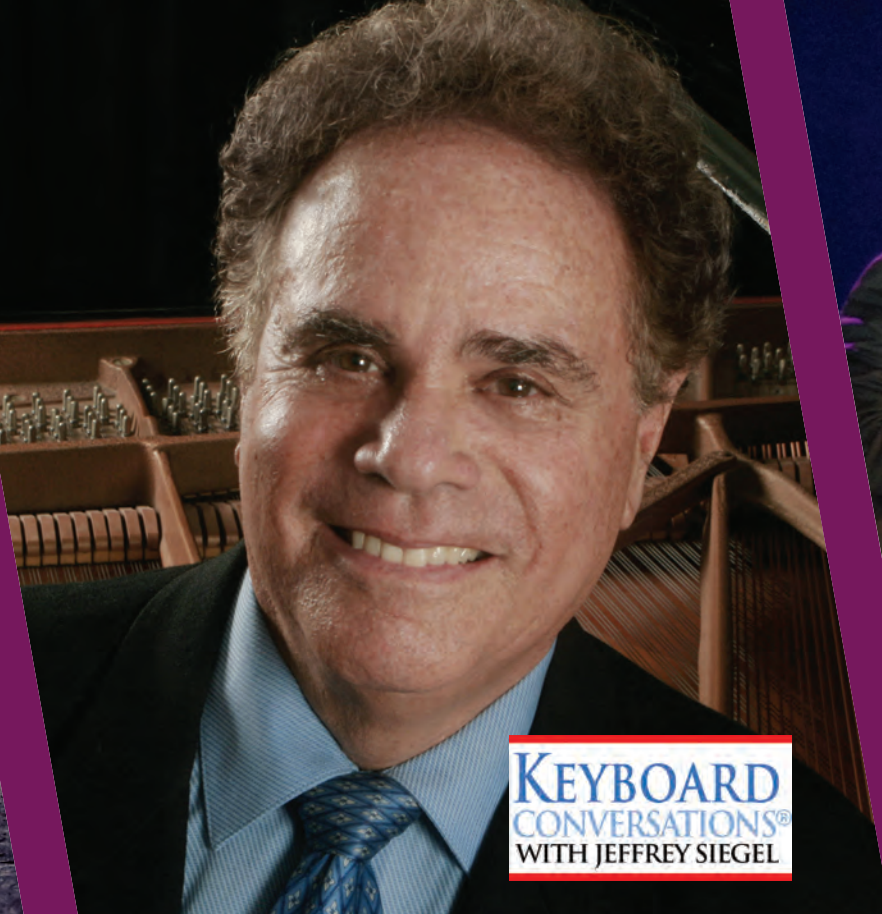
Orchestra: Adults \$20 – Seniors/Students \$15

Balcony: Adults \$17 – Seniors/Students \$13

The Grammy® Award-winning Steep Canyon Rangers are best known for collaborations with actor/comedian and respected banjo player Steve Martin and esteemed singer-songwriter Edie Brickell. Their highly anticipated ninth studio album, *RADIO*, features twelve all-original bluegrass and Americana tracks, all produced by fourteen-time Grammy® winner Jerry Douglas. Join the Steep Canyon Rangers for an evening of instrumental virtuosity and high-energy performance as they present their dynamic songwriting talents in today's bluegrass styles.

Learn more: [www.steepcanyon.com](http://www.steepcanyon.com)





WCU  
**LIVE!**

WCU  
**LIVE!**

WCU  
**LIVE!**

WCU  
**LIVE!**

## Keyboard Conversations® with Jeffrey Siegel “Festive French Fare”

Wednesday, November 16, 2016 | 7:30 pm

Philips Autograph Library

FREE EVENT\*

Internationally acclaimed pianist Jeffrey Siegel returns to WCU this fall with a gorgeous feast of music to enchant the ears! His “Festive French Fare” program will include Debussy’s beloved *Clair de lune*, Ravel’s impressionistic *The Fountain*, and the poetic *Nocturne* of Gabriel Fauré.

Learn more: [www.keyboardconversations.com](http://www.keyboardconversations.com)

\*No tickets are required. Seating is limited and on a first come, first serve basis.

## Neil Berg’s 100 Years of Broadway

Friday, November 18, 2016 | 7:30 pm

Emilie K. Asplundh Concert Hall

Orchestra: Adults \$20 – Seniors/Students \$15

Balcony: Adults \$17 – Seniors/Students \$13

Composer and lyricist Neil Berg presents his widely acclaimed 100 Years of Broadway, a musical revue of Broadway’s most celebrated shows. Featuring a dazzling cast of five real Broadway stars accompanied by an all-star New York band, Berg’s show recreates some of the greatest moments from the finest shows of the century, including *The Phantom of the Opera*, *Les Miserables*, *CATS*, *Jesus Christ Superstar*, and *Jekyll & Hyde*.

Learn more: [www.neilberg.com](http://www.neilberg.com)



# The Greatest Pirate Story Never Told!



WCU  
**LIVE!**

WCU  
**LIVE!**



Cirque  
**ZUMAZUMA**



WCU  
**LIVE!**

WCU  
**LIVE!**

## The Greatest Pirate Story Never Told!

Saturday, December 3, 2016 | 2:00 pm

Madeleine Wing Adler Theatre

General Admission: Adults \$8 – Seniors/Students \$5

Flung into the future by a musical-loving Sea Witch, a crew of misfit pirates-turned-actors must now perform the greatest pirate epic ever seen on stage. But, when their script is partially obscured by a tragic squid ink accident, the crew must turn to the audience to fill in the missing parts of the plot. Nominated as “Best Family Show 2014” by the Off-Broadway Alliance Awards, *The Greatest Pirate Story Never Told* is Off-Broadway’s improvised, interactive, musical pirate adventure, filled with boatloads of laugh-out-loud moments for both kids and grown-ups!

Learn more: [www.greatestpiratestory.com](http://www.greatestpiratestory.com)

## Cirque Zuma Zuma

Friday, February 17, 2017 | 7:30 pm

Emilie K. Asplundh Concert Hall

Orchestra: Adults \$20 – Seniors/Students \$15

Balcony: Adults \$17 – Seniors/Students \$13

Audiences and critics agree – Cirque Zuma Zuma is unlike anything they have ever seen before. Many describe it as an African-style Cirque du Soleil; such is the standard of Zuma Zuma’s performers and the quality of the show’s live musical score. As seen on season 6 of *America’s Got Talent*, Cirque Zuma Zuma packs every show with nonstop action and incredible features that keep audiences on the edges of their seats.

Learn more: [www.zumazuma.com](http://www.zumazuma.com)



# COMMITTED



WCU  
**LIVE!**

WCU  
**LIVE!**

## Committed

Saturday, February 25, 2017 | 7:30 pm

Madeleine Wing Adler Theatre

General Admission: Adults \$20 – Seniors/Students \$15

Considered one of the nation's top ten a cappella groups, Committed is frequently compared to groups like Take 6 and Boyz II Men. Committed made their breakthrough on NBC's *The Sing-Off*, from which they emerged as season 2 champions in 2010. Now with a 2016 Grammy nomination under their belts, this five-man group from Alabama brings lush harmonies and an astoundingly varied repertoire on tour across the country.

Learn more: [www.committedsings.com](http://www.committedsings.com)



WCU  
**LIVE!**

WCU  
**LIVE!**

## The Divine Hand Ensemble

Friday, March 3, 2017 | 7:30 pm

Madeleine Wing Adler Theatre

General Admission: Adults \$20 – Seniors/Students \$15

Moog-endorsed Mano Divina, leader of the Divine Hand Ensemble, is a professional concert Thereminist who performs classical and sacred music with his eight-member string ensemble internationally. The Divine Hand Ensemble plays with precision, elegance, and grace, mesmerizing audiences through the ethereal and emotional calm and mystery of the Theremin. Watch as Divina bends electricity with his hands and literally pulls beautiful music out of thin air. The Divine Hand Ensemble crosses all music boundaries through unique interpretations of movie scores, familiar popular songs, and classical and opera favorites.

Learn more: [www.divinehand.net](http://www.divinehand.net)

**PURCHASE TICKETS** | 610-436-2266 | [www.wcupatix.com](http://www.wcupatix.com) 7



WCU  
**LIVE!**

WCU  
**LIVE!**

WCU  
**LIVE!**

WCU  
**LIVE!**

## Keyboard Conversations® with Jeffrey Siegel “An American Salute”

Wednesday, March 8, 2017 | 7:30 pm

Philips Autograph Library

FREE EVENT\*

This lively salute to American composers will include the rarely heard solo piano version of Gershwin's *Rhapsody in Blue*, *Excursions* of the famous West Chester-born composer Samuel Barber, Gottschalk's virtuoso masterpiece *The Union*, written during the Civil War, MacDowell's tender *To a Wild Rose*, and Aaron Copland's rousing *Hoe-Down* from *Rodeo* and his humorous *Cat and the Mouse*.

Learn more: [www.keyboardconversations.com](http://www.keyboardconversations.com)

\*No tickets are required. Seating is limited and on a first come, first serve basis.

## Caladh Nua

Saturday, March 11, 2017 | 7:30 pm

Emilie K. Asplundh Concert Hall

Orchestra: Adults \$20 – Seniors/Students \$15

Balcony: Adults \$17 – Seniors/Students \$13

Caladh Nua is a tightly-knit, vibrant, and staggeringly talented band with its origins deeply rooted in the southern counties of Ireland. Comprised of five versatile musicians and singers playing a wide selection of instruments, the band captures the essential qualities of traditional Irish music and balances them with an innovative contemporary flair.

Learn more: [www.caladhnua.com](http://www.caladhnua.com)





WCU  
**LIVE!**

WCU  
**LIVE!**

## MISSOULA CHILDREN'S THEATRE presents *Treasure Island*

Saturday, March 18, 2017 | 3:00 and 5:30 pm

Emilie K. Asplundh Concert Hall

General Admission: Adults \$8 – Seniors/Students \$5

Back by popular demand, the country's preeminent professional children's theatre company, the Missoula Children's Theatre, returns to WCU and will once again recruit more than fifty local children to stage an original musical adaptation.

**Auditions:** Monday, March 13 at 4:30 pm in the Emilie K. Asplundh Concert Hall, Philips Memorial Building (700 South High Street).

*Approximately fifty roles are available for local students ages kindergarten through 12th grade. No advance preparation or experience is necessary. Just be ready to have a good time!*

Register for auditions online at: [www.wcupa.edu/live](http://www.wcupa.edu/live).

Learn more: [www.mctinc.org](http://www.mctinc.org)

XX HYPNOTIC BRASS ENSEMBLE



WCU  
**LIVE!**

WCU  
**LIVE!**

## Hypnotic Brass Ensemble

Friday, March 31, 2017 | 7:30 pm

Emilie K. Asplundh Concert Hall

Orchestra: Adults \$20 – Seniors/Students \$15

Balcony: Adults \$17 – Seniors/Students \$13

The Hypnotic Brass Ensemble consists of seven brothers from the south side of Chicago who come from an extraordinary musical family. Since their founding in 1999, Smoov, Baji, Hudah, Yoshi, Rocco, Clef, and Cid have performed at venues all across the world and are excited to finally bring their sound home on a tour throughout North America. Mixing the brass band tradition with generous doses of hip-hop, soul, and funk, the Hypnotic Brass Ensemble creates an intoxicating and boisterous blend of music that is just barely contained.

Learn more: [www.hypnoticbrassensemble.com](http://www.hypnoticbrassensemble.com)

**PURCHASE TICKETS** | 610-436-2266 | [www.wcupatix.com](http://www.wcupatix.com) 9





WCU  
**LIVE!**

WCU  
**LIVE!**



WCU  
**LIVE!**

WCU  
**LIVE!**

## TAMAGAWA UNIVERSITY Taiko Drumming & Dance Troupe

Monday, April 10, 2017 | 7:30 pm

Emilie K. Asplundh Concert Hall

Orchestra Reserved: \$15 | Balcony Reserved: \$10

Nearly 30 drummers and dancers from Tamagawa University, Japan, make a return appearance on our campus for an athletic and graceful performance that includes thundering Taiko drumming and Japanese folkloric dance. As one of the top-ranking taiko groups in Japan, their amazing stage show has received rave reviews from the New York Times and other media. With growing numbers of fans every year, they return to the U.S. to perform at the Cherry Blossom Festivals in Philadelphia and Washington, D.C.

## The Stunt Dog Experience

Friday, May 5, 2017 | 7:30 pm

Emilie K. Asplundh Concert Hall

Orchestra: Adults \$20 – Seniors/Students \$15

Balcony: Adults \$17 – Seniors/Students \$13

Chris Perondi's famous stunt dogs are out of this world! During this "Stunt Dog Experience," you can expect to witness some of the most incredible stunts and behaviors ever performed by dogs. On a mission to promote animal rescue, pet adoption, and responsible pet care, all of the dogs in the show have been rescued from pounds and shelters from across the country. With amazing air tricks, big air stunts, comedy antics, dancing dogs, and athletic feats, it is the most entertaining show of its kind!

Learn more: [www.stuntdogshow.com](http://www.stuntdogshow.com)



# EVENT PARKING INFORMATION



## Venues

### Philips Memorial Building (1)

Emilie K. Asplundh Concert Hall  
Philips Autograph Library

*Please use B, C, D, G Lot or  
Sharpless Parking Structure*

### Schmucker Science Center (2)

WCU Planetarium

*Please use K Lot*

### Sykes Student Union (3)

Sykes Student Union Theatre  
Ticket Office

*Please use K Lot*

### E. O. Bull Center for the Arts (4)

Knauer Gallery  
John H. Baker Gallery  
J. Peter Adler Studio Theatre  
E. O. Bull Center  
MainStage Theatre

*Please use M Lot*

### Swope Music Building (5)

Madeleine Wing Adler Theatre  
Ware Recital Hall

*Please use M Lot*

Each parking lot in the WCU campus is designated for specific permit parking. During special events, however, parking lots immediately adjacent to event venues are available for visitor parking. In addition, there is street parking available throughout the campus. The West Chester Borough owns the parking meters on the WCU campus and the hours of enforcement are as follows:

Monday – Wednesday: 8 am – 10 pm;

Thursday – Friday: 8 am – 12 am;

Saturday: 5 pm – 12 am

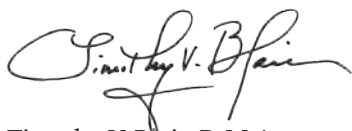
Please use the suggested lots for each of the venues, as these are the lots that will not be ticketed during

the event. If you are attending a weekday event between 8:00 am and 4:00 pm and are unable to find parking in the suggested lot, you may pay to park in one of the conveniently located parking garages. The New Street Parking Garage and the Sharpless Parking Structure are located on North Campus within a short walking distance to all venues. Both structures are available for visitors, faculty, or students at an hourly rate. The Matlack structure requires a permit, but is available for special event parking at no charge.

**D**URING 2016-2017 the College of Arts and Humanities plans another vibrant, new cultural arts season. As always, we continue to offer a wide array of art exhibits, theatrical programs, dance productions, and concerts by our stellar artist faculty and notable student ensembles. From our on-campus events to those off campus, we are committed to excellence in all the cultural arts. My colleagues and I are also very proud of our ever-growing number of artistic and educational partnerships with community, regional, national, and international arts organizations.

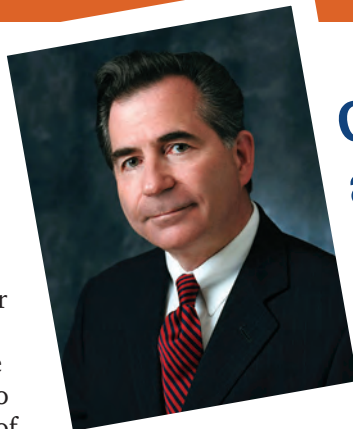
Music and all forms of creative artistic expression bridge differences in background and experience, introduce fresh perspective, and expand our vision. The cultural arts also preserve our heritage, add pleasure to the present, and provide a foundation for the future. Within this spirit, and in keeping with the University's ongoing global initiative, is our expansion of arts programs throughout the world. Students and faculty regularly have the opportunity to study and perform abroad in a number of countries, including China, England, Italy, Greece, Turkey, Russia, Egypt, Austria, and Costa Rica.

College of Arts and Humanities students and faculty have a long tradition of providing high-quality artistic programs to the community and region. If you have yet to attend one of our events or have not done so in some time, you will be impressed by the degree of excellence. Many CAH cultural events are available to you without charge or at a very reasonable cost. Please join us in the coming season to enjoy our many offerings and to experience first hand the Performing Arts Center and the E.O. Bull Center for the Arts. We are excited about the artistic opportunities that await you and look forward to seeing you there!



Timothy V. Blair, D.M.A.

Dean and Professor of Piano  
College of Arts and Humanities



## College of Arts and Humanities

### School of Music

wcupa.edu/music  
610.436.2739

### Theatre & Dance

wcupa.edu/theatreDance  
610.436.2533

### Art + Design

wcupa.edu/artDesign  
610.436.2755



## Once Upon A Mattress

**Music by MARY RODGERS**

**Lyrics by MARSHALL BARER**

**Book by JAY THOMPSON, DEAN FULLER and  
MARSHALL BARER**

Madeleine Wing Adler Theatre

Performing Arts Center

Reserved Seating: \$12 to \$15

*Once Upon A Mattress* is a screwball ode to the history of musical comedy. Made famous as Carol Burnett's Broadway debut, a hilarious tweaking of the familiar fairy tale "The Princess and the Pea," provides for some side-splitting royal shenanigans. Chances are you'll never look at fairy tales quite the same way again!

10/14/16, 7:30pm

10/20/16, 7:30pm

10/15/16, 2:00pm

10/21/16, 7:30pm

10/16/16, 2:00pm

10/22/16, 7:30pm

<http://www.rnh.com>



## Theatre & Dance



### **Veer: to alter a direction or course, a dance concert**

Madeleine Wing Adler Theatre  
Performing Arts Center  
General Admission: \$12 to \$15

University Dance Company's annual fall concert, *Veer: to alter a direction or course*, includes work by current WCU dance faculty and professional guest artists from the Philadelphia area.

11/11/16, 7:30pm  
11/12/16, 2:00pm  
11/12/16, 7:30pm

### **The Long Christmas Ride Home**

by Paula Vogel

J. Peter Adler Studio Theatre  
E. O. Bull Center for the Arts  
General Admission: \$10

Time becomes fluid and ghosts walk among us on a snowy Christmas Eve. This dark, beautiful play celebrates our need for connection while exploring the potential costs of our choices. Combining elements of Japanese theatre with contemporary storytelling techniques, the play will feature hand-made puppets and a haunting original score played live by the ensemble. *The Long Christmas Ride Home* is an unforgettable study of an American family careening near the edge of oblivion.

11/16/16, 7:30pm  
11/17/16, 7:30pm  
11/18/16, 7:30pm  
11/19/16, 2:00pm  
11/19/16, 7:30pm  
11/20/16, 2:00pm

### **Blithe Spirit**

by Noel Coward

Main Stage Theatre  
E. O. Bull Center for the Arts  
General Admission: \$10 to \$12

The smash comedy hit of the London and Broadway stages, this much-revived classic from Noel Coward, the playwright of *Private Lives*, offers up fussy, cantankerous novelist Charles Condomine, who is, much to the dismay of his current wife, haunted - literally - by the ghost of his late first wife, the clever and insistent Elvira who is called up by a visiting "happy medium", one Madame Arcati. Will these blithe spirits haunt the hapless Charles into perpetuity or will he find a way to rest in peace?

3/2/17, 7:30pm  
3/3/17, 7:30pm  
3/4/17, 2:00pm  
3/4/17, 7:30pm  
3/5/17, 2:00pm

## Student Written One Acts

J. Peter Adler Studio Theatre  
E. O. Bull Center for the Arts  
General Admission: \$5

The *Student Written One Acts* is an evening of short plays penned by the Theatre 313 Playwriting Class. Come see plays reflecting issues and themes that resonate with college students from West Chester University. We are pleased again to have our talented students serve as directors, designers, technicians, stage managers and, of course, actors to present this performance of original student work.

3/31/17, 7:30pm  
4/1/17, 2:00pm  
4/1/17, 7:30pm

## The Honorable Maid

By Carlo Goldoni  
Translated and Adapted by  
John Bellomo  
Main Stage Theatre  
E. O. Bull Center for the Arts  
General Admission: \$10 to \$12

Follow the plight of Bettina, a poor but honorable Venetian girl as she tries to find her way through this classic tale of love, mistaken identity, and sassy servants. First performed during the Venetian Carnival of 1749, it received the audiences' adoration and played for twenty-two nights. Told in the raucous physical style of the commedia dell'arte, this production is sure to please.

4/20/17, 7:30pm    4/22/17, 7:30pm  
4/21/17, 7:30pm    4/23/17, 2:00pm  
4/22/17, 2:00pm

## Serendipity, a dance concert

Madeleine Wing Adler Theatre  
Performing Arts Center  
General Admission: \$12 to \$15

University Dance Company's annual spring concert, *Serendipity*, celebrates the highly creative choreography of WCU students in a variety of styles. The concert also includes work by current WCU dance faculty.

4/27/17, 7:30pm  
4/28/17, 7:30pm  
4/29/17, 2:00pm  
4/29/17, 7:30pm

## BECOME A SUBSCRIBER AND GIVE SPECIAL SUPPORT!

Best choice of seats at the lowest price. Secure your seats for all six productions, plus SWOA!

All subscribers enjoy priority seating, program listing, and free ticket exchange.

ROLE	AMOUNT	BENEFITS
Walk On	\$65.00	1 season ticket
Supporting	\$95.00	2 season tickets
Leading	\$125.00	3 season tickets
Stage Manager	\$250.00	4 season tickets
<b>Make checks payable and return to WCU Theatre:</b>		
Department of Theatre and Dance West Chester University E.O. Bull Center, Room 119 West Chester, PA 19383		

Visit the Department of Theatre and Dance at [wcupa.edu/theatreDance](http://wcupa.edu/theatreDance).

FREE PARKING available behind the E.O. Bull Center for the Arts and Madeleine Wing Adler Theatre. Enter from South Matlack Street, South High Street, or the drive on East Rosedale Ave.

Single tickets will go on sale in September.

### TICKETS & INFORMATION Department of Theatre and Dance

EO BULL BOX OFFICE | Phone: 610-436-2533

Box office opens in September

Tickets can be purchased online at:  
[wcupa.edu/TheatreDanceTickets](http://wcupa.edu/TheatreDanceTickets)

Tickets also available one hour before curtain at the venue Box Office.



## JOHN H. BAKER GALLERY

### 116<sup>th</sup> Anniversary International Exhibition of Works on Paper

#### Philadelphia Water Color Society

September 6 – October 15, 2016  
Awards Reception: Saturday,  
October 15, 2016, 1:00 – 3:00 pm

### Art Works! A Retrospective 1951–2008

#### Bernard J. Felch

November 1 – December 16, 2016  
Opening Reception and Book Signing:  
Wednesday, November 2, 2016,  
4:00 – 7:00 pm

### Art, Spirit, and Beyond

#### Karl Kuerner and His Students

January 23 – February 24, 2017  
Artist Reception: Wednesday,  
February 1, 2016, 4:00 – 7:00 pm

### Department of Art + Design Student Exhibition

March 20 – April 7, 2017  
Opening Reception: Wednesday,  
March 29, 2017, 12:00 – 2:00 pm

### BFA Exhibition

April 26 – May 12, 2017  
Opening Reception: Thursday,  
April 27, 2017, 5:00 – 8:00 pm

## KNAUER GALLERY

### Glimpse/Glimmer

#### Erica Loustau

August 29 – September 25, 2016  
Artist Reception: Wednesday,  
September 7, 2016, 4:00 – 7:00 pm

### Phantoms, Phantasies, and Phenomena

#### Larry Will

October 3 – November 4, 2016  
Artist Reception: Thursday,  
October 6, 2016, 4:00 – 7:00 pm

### Sentinals

#### Scott Ross

November 14 – December 16, 2016  
Artist Reception: Wednesday,  
November 16, 2016, 4:00 – 7:00 pm

### Bright Harmony – New Works

#### Adel Barimani

January 23 – February 24, 2017  
Artist Reception: Thursday,  
February 9, 4:00 – 7:00 pm

## Department of Art + Design Faculty Exhibition

March 6 – April 7, 2017  
Artist Reception: Tuesday,  
April 4, 4:00 – 7:00 pm

### Alumni Exhibition

April 17 – May 12, 2017  
Artist Reception: Wednesday,  
April 19, 2017, 4:00 – 7:00 pm



Above Right: *Still Life*  
by Bernard J. Felch;

Below Right:  
*Unloading Straw*  
by Karl Kuerner

# School of Music

Most School of Music events are free and open to the public. A few special events will have a nominal ticket charge with the proceeds earmarked for music scholarships and ensembles expenses. These programs are denoted with an asterisk. Ticketed events will be coordinated by Student Services located in Sykes Student Union, Inc. on campus. For ticket information call SSI ticket office 610.436.2266. For event information call the School of Music at 610.436.2739 or visit [wcupa.edu/music](http://wcupa.edu/music).

## FACULTY RECITALS

### Anita Greenlee, organ

Friday, September 16, 7:30 PM  
Madeleine Wing Adler Theatre  
Performing Arts Center

### David Cullen, guitar

Monday, September 19, 7:30 PM  
Ware Family Recital Hall  
Swope Music Building

### Gloria Galante, harp

Monday, September 26, 7:30 PM  
Ware Family Recital Hall  
Swope Music Building



### Randall Scarlata, baritone

Monday, October 3, 7:30 PM  
Philips Autograph Library  
Philips Memorial Building

### Igor Resnianski, piano

Monday, October 17, 7:30 PM  
Philips Autograph Library  
Philips Memorial Building

### In Young Lee, soprano

Monday, October 24, 7:30 PM  
Madeleine Wing Adler Theatre  
Performing Arts Center

### Daniel Cherry, trombone

Monday, November 14, 7:30 PM  
Madeleine Wing Adler Theatre  
Performing Arts Center

### Quintsylvania Winds

Monday, November 21, 7:30 PM  
Philips Autograph Library  
Philips Memorial Building

### Jean-Christophe Dobrzelewski, trumpet

Monday, November 28, 7:30 PM  
Madeleine Wing Adler Theatre  
Performing Arts Center

### Jon Fowler, tuba

Monday, December 5, 7:30 PM  
Ware Family Recital Hall  
Swope Music Building

### Vincent Craig, piano

Monday, January 30, 7:30 PM  
Madeleine Wing Adler Theatre  
Performing Arts Center

### Terry Klinefelter, piano

Monday, February 6, 7:30 PM  
Madeleine Wing Adler Theatre  
Performing Arts Center

### Ovidiu Marinescu, cello

Monday, February 13, 7:30 PM  
Madeleine Wing Adler Theatre  
Performing Arts Center

### Stephen Ng, tenor

Monday, February 20, 7:30 PM  
Madeleine Wing Adler Theatre  
Performing Arts Center

### Henry Grabb, oboe & Jon Gaarder, bassoon

Monday, February 27, 7:30 PM  
Philips Autograph Library  
Philips Memorial Building

### Kimberly Reighley, flute

Monday, March 6, 7:30 PM  
Madeleine Wing Adler Theatre  
Performing Arts Center

### Ralph Sorrentino, percussion

Monday, March 20, 7:30 PM  
Madeleine Wing Adler Theatre  
Performing Arts Center

### Emily Bullock, mezzo-soprano

Monday, March 27, 7:30 PM  
Philips Autograph Library  
Philips Memorial Building

### Elizabeth Pfaffle, horn

Monday, April 3, 7:30 PM  
Philips Autograph Library  
Philips Memorial Building

### Mark Rimple and guests, Drew Minter and Mary Springfels: Music of Dante's *Divine Comedy*

Monday, April 17, 7:30 PM  
Ware Family Recital Hall  
Swope Music Building

### Peter Paulsen, bass

Monday, April 24, 7:30 PM  
Ware Family Recital Hall  
Swope Music Building







## BAND & WIND ENSEMBLES

### Wind Ensemble & Wind Symphony

**Andrew Yozviak & M. Gregory Martin, directors**

Thursday, September 29, 8:15 PM  
Emilie K. Asplundh Concert Hall  
Philips Memorial Building

### Wind Symphony & Concert Band

**M. Gregory Martin, director**

Sunday, November 13, 7:00 PM  
Emilie K. Asplundh Concert Hall  
Philips Memorial Building

### Wind Ensemble

**Andrew Yozviak, director**

Sunday, December 11, 3:00 PM  
Madeleine Wing Adler Theatre  
Performing Arts Center

### Chamber Winds & Concert Band

**Andrew Yozviak & M. Gregory Martin, directors**

Thursday, February 16, 8:15 PM  
Madeleine Wing Adler Theatre  
Performing Arts Center

### Wind Ensemble & Wind Symphony

**Andrew Yozviak & M. Gregory Martin, directors**

Thursday, February 23, 8:15 PM  
Madeleine Wing Adler Theatre  
Performing Arts Center

### Wind Symphony & Concert Band

**M. Gregory Martin, director**

Wednesday, April 26, 8:15 PM  
Emilie K. Asplundh Concert Hall  
Philips Memorial Building

### Chamber Winds

**Andrew Yozviak, director**

Tuesday, April 25, 8:15 PM  
Philips Autograph Library  
Philips Memorial Building

### Wind Ensemble

**Andrew Yozviak, director**

Sunday, April 30, 3:00 PM  
Madeleine Wing Adler Theatre  
Performing Arts Center

## SMALL ENSEMBLES

### Woodwind Chamber Ensemble

**Henry Grabb, director**

Thursday, November 3, 8:15 PM  
Ware Family Recital Hall  
Swope Music Building

### Guitar Ensemble

**David Cullen, director**

Wednesday, November 16, 8:15 PM  
Ware Family Recital Hall  
Swope Music Building

### Chamber Orchestra

**Joseph Caminiti, director**

Thursday, November 17, 8:15 PM  
Philips Autograph Library  
Philips Memorial Building

### Percussion Ensemble

**Ralph Sorrentino, director**

Tuesday, November 22, 8:15 PM  
Madeleine Wing Adler Theatre  
Performing Arts Center

### Flute Ensemble

**Kimberly Reighley, director**

Wednesday, November 30, 8:15 PM  
Madeleine Wing Adler Theatre  
Performing Arts Center

### Collegium Musicum

**Mark Rimple, director**

Thursday, December 1, 8:15 PM  
Ware Family Recital Hall  
Swope Music Building

### Brass Chamber Recital

**Daniel Cherry, Jean-Christophe Dobrzelewski, Jon Fowler & Elizabeth Pfaffle, directors**

Sunday, March 5, 7:00 PM  
Madeleine Wing Adler Theatre  
Performing Arts Center

### Flute Ensemble

**Kimberly Reighley, director**

Tuesday, April 11, 8:15 PM  
Madeleine Wing Adler Theatre  
Performing Arts Center

### Collegium Musicum

**Mark Rimple, director**

Wednesday, April 12, 7:00 PM  
Ware Family Recital Hall  
Swope Music Building

### Percussion Ensemble

**Ralph Sorrentino, director**

Tuesday, April 18, 8:15 PM  
Madeleine Wing Adler Theatre  
Performing Arts Center

### Guitar Ensemble

Wednesday, April 19, 8:15 PM  
Ware Family Recital Hall  
Swope Music Building

### Chamber Orchestra

**Joseph Caminiti, director**

Wednesday, May 3, 8:15 PM  
Philips Autograph Library  
Philips Memorial Building

### Woodwind Chamber Recital

**Karen Dannelsa, director**

Thursday, May 4, 8:15 PM  
Ware Family Recital Hall  
Swope Music Building

### Collegium Musicum

**Mark Rimple, director**

Monday, May 8, 7:00 PM  
Ware Family Recital Hall  
Swope Music Building

## SPECIAL EVENTS

### School of Music Honors Convocation

**Dean Timothy V. Blair**

Sunday, October 2, 3:00 PM  
Emilie K. Asplundh Concert Hall  
Philips Memorial Building

### Symphony Orchestra

**Joseph Caminiti, director**

Thursday, October 6, 8:15 PM  
Emilie K. Asplundh Concert Hall  
Philips Memorial Building

### Musica Humana Vocal Consort

**Mark Rimple, director**

Wednesday, October 19, 8:15 PM  
Ware Family Recital Hall  
Swope Music Building

### New Music Concert

**Van Stiefel & Jacob Cooper, directors**

Thursday, October 20, 8:15 PM  
Ware Family Recital Hall  
Swope Music Building

### Guest Artist: Percussion Ensemble of Costa Rica

Wednesday, November 2, 8:15 PM  
Madeleine Wing Adler Theatre  
Performing Arts Center

### Vocal Honors Recital

**Emily Bullock, director**

Wednesday, November 2, 8:15 PM  
Ware Family Recital Hall  
Swope Music Building

### Keyboard Honors Recital

**Patricia Powell, director**

Wednesday, November 9, 8:15 PM  
Ware Family Recital Hall  
Swope Music Building

### Harp Festival

**Gloria Galante, director**

Sunday, November 13, 3:00 PM  
Madeleine Wing Adler Theatre  
Performing Arts Center

### Liberty Wind Symphony\*

**Andrew Yozviak, director**

Saturday, November 19, 7:30 PM  
Madeleine Wing Adler Theatre  
Performing Arts Center

### Irving H. Cohen Memorial Concert featuring Symphony Orchestra

**Joseph Caminiti, director**

Sunday, November 20, 3:00 PM  
Madeleine Wing Adler Theatre  
Performing Arts Center

### 95<sup>th</sup> Holiday Program\*

**Ryan Kelly, director**

Saturday, December 3, 3:00 PM  
Emilie K. Asplundh Concert Hall  
Philips Memorial Building

### Liberty Youth Wind Symphony\*

**Andrew Yozviak, director**

Sunday, December 4, 3:00 PM  
Madeleine Wing Adler Theatre  
Performing Arts Center

### New Music Concert

**Van Stiefel & Jacob Cooper, directors**

Wednesday, December 7, 8:15 pm  
Ware Family Recital Hall  
Swope Music Building

### Kennett Symphony Children's Chorus in Residence at West Chester University

**Eileen Keller, director**

Saturday, December 17, 7:00 PM  
Madeleine Wing Adler Theatre  
Performing Arts Center

### New Music Concert

**Van Stiefel & Jacob Cooper, directors**

Thursday, February 9, 8:15 PM  
Ware Family Recital Hall  
Swope Music Building

### Symphony Orchestra

**Joseph Caminiti, director**

Sunday, February 26, 3:00 PM  
Madeleine Wing Adler Theatre  
Performing Arts Center

### Musica Humana

**Mark Rimple, director**

Tuesday, February 28, 8:15 PM  
Ware Family Recital Hall  
Swope Music Building

### Cat Angel Network Concert

**Henry Grabb, director**

Sunday, March 5, 3:00 PM  
Madeleine Wing Adler Theatre  
Performing Arts Center

### Bach Celebration

**Vincent Craig, director**

Tuesday, March 21, 8:15 PM  
Madeleine Wing Adler Theatre  
Performing Arts Center

### Guest Artist: Venice String Quartet

Robert Maggio, coordinator  
Tuesday, March 28, 8:15 PM  
Ware Family Recital Hall  
Swope Music Building

### Tom Smith Cello Scholarship Benefit Concert

**Ovidiu Marinescu, director**

Tuesday, April 4, 8:15 PM  
Ware Family Recital Hall  
Swope Music Building

### New Music Concert

**Van Stiefel & Jacob Cooper, directors**

Thursday, April 6, 8:15 PM  
Ware Family Recital Hall  
Swope Music Building

### WCU Pre-Collegiate Piano Competition

**Anita Greenlee, coordinator**

Saturday, April 8, All Day  
Swope Music Building

### Vocal Honors Recital

**Emily Bullock, director**

Thursday, April 20, 8:15 PM  
Ware Family Recital Hall  
Swope Music Building

### Liberty Wind Symphony\*

**Andrew Yozviak, director**

Sunday, April 23, 3:00 PM  
Emilie K. Asplundh Concert Hall  
Philips Memorial Building

### WCU Pre-Collegiate Piano Competition Winners Recital

Anita Greenlee, coordinator  
Sunday, April 23, 3:00 PM  
Ware Family Recital Hall  
Swope Music Building



# 27<sup>th</sup>

## ANNUAL JAZZ FESTIVAL

**March 22 – 25, 2017**

**Marc Jacoby, director**

Madeleine Wing Adler Theatre  
Performing Arts Center

For more information visit:

<http://www.wcupa.edu/jazzfest>

### Symphony Orchestra & Choirs

**Joseph Caminiti, David P.  
DeVenney and Ryan Kelly,  
directors**

Sunday, May 7, 7:30 PM  
Emilie K. Asplundh Concert Hall  
Philips Memorial Building



### Keyboard Honors Recital

**Patricia Powell, director**

Tuesday, May 2, 8:15 PM  
Ware Family Recital Hall  
Swope Music Building

### Kennett Symphony Children's Choir

**Eileen Keller, director**

Saturday, May 6, 7:00 PM  
Emilie K. Asplundh Concert Hall  
Philips Memorial Building

### Liberty Youth Wind Symphony\*

**Andrew Yozviak, director**

Sunday, May 7, 3:00 PM  
Madeleine Wing Adler Theatre  
Performing Arts Center

## CHORAL CONCERTS

### Fall Choral Festival

**David P. DeVenney and  
Ryan Kelly, directors**

Thursday, October 13, 8:15 PM  
Emilie K. Asplundh Concert Hall  
Philips Memorial Building

### Concert Choir and Mastersingers

**David P. DeVenney and  
Ryan Kelly, directors**

Friday, October 28, 7:30 PM  
Madeleine Wing Adler Theatre  
Performing Arts Center

### Concert Choir

**David P. DeVenney, director**

Friday, February 10, 7:30 PM  
Madeleine Wing Adler Theatre  
Performing Arts Center

### Mastersingers

**Ryan Kelly, director**

Sunday, February 19, 3:00 PM  
Madeleine Wing Adler Theatre  
Performing Arts Center

### Winter Choral Festival

**David P. DeVenney and  
Ryan Kelly, directors**

Thursday, March 2, 8:15 PM  
Madeleine Wing Adler Theatre  
Performing Arts Center

### Spring Choral Festival

**David P. DeVenney and  
Ryan Kelly, directors**

Thursday, April 27, 8:15 PM  
Emilie K. Asplundh Concert Hall  
Philips Memorial Building  
Performing Arts Center

## Madeleine Wing Adler CONCERT SERIES

Held at Noon the first Thursday  
of every month in the Madeleine Wing  
Adler Theatre Grand Foyer of the  
Performing Arts Center.

### FALL

Thursday, October 6  
Thursday, November 3  
Thursday, December 1

### SPRING

Thursday, February 2  
Thursday, March 2  
Thursday, April 6



## JAZZ

### Criterions Jazz Ensemble

**Marc Jacoby, director**

Friday, November 4, 7:30 PM  
Madeleine Wing Adler Theatre  
Performing Arts Center

### Latin Jazz Ensemble & Jazz Combos

**Marc Jacoby, director**

Friday, November 18, 7:30 PM  
Madeleine Wing Adler Theatre  
Performing Arts Center

### Statesmen & Vocal Jazz

**Daniel Cherry & Ryan Kelly,  
directors**

Tuesday, November 29, 8:15 PM  
Madeleine Wing Adler Theatre  
Performing Arts Center

### Latin Jazz & Jazz Combos

**Marc Jacoby, director**

Thursday, April 13, 8:15 PM  
Madeleine Wing Adler Theatre  
Performing Arts Center

### Statesmen

**Daniel Cherry, director**

Friday, April 28, 7:30 PM  
Emilie K. Asplundh Concert Hall  
Philips Memorial Building

### Criterions Jazz Ensemble

**Marc Jacoby, director**

Friday, May 5, 7:30 PM  
Madeleine Wing Adler Theatre  
Performing Arts Center

## MARCHING BAND

**Andrew Yozviak, director**  
**M. Gregory Martin,  
associate director**

### Football at Farrell Stadium

Saturday, September 10, 12:00 PM  
Saturday, September 24, 6:00 PM  
Saturday, October 8, 12:00 PM  
Saturday, October 22, 2:00 PM  
Saturday, November 5, 1:00 PM

### Collegiate Marching Band Festival

Sunday, September 25, 12:30 PM  
Allentown, PA

### Homecoming Parade & Football Game

Saturday, October 22, 2016  
Parade: 10:00 AM  
Game: 2:00 PM

### West Chester Halloween Parade

Wednesday, October 26, 7:00 PM  
Rain Date: Thursday, October 29

### West Chester Old- Fashioned Christmas Parade

Friday, December 2, 7:15 PM

## OPERA

### I CAPULETTI ED MONTECCHI

- *Vincenzo Bellini*

**Emily Bullock, director**

Friday, December 9, 7:30 PM  
Saturday, December 10, 7:30 PM  
Madeleine Wing Adler Theatre  
Performing Arts Center

### THE TELEPHONE AND THE MEDIUM

- *Gian Carlo Menotti*

**Russell Franks, guest director**

**David P. DeVenney, conductor**

**Emily Bullock, music director**

Friday, April 7, 7:30 PM  
Saturday, April 8, 7:30 PM  
Madeleine Wing Adler Theatre  
Performing Arts Center



## Miss West Chester University 2017

February 4, 2017 | 7:30 p.m.

Emilie K. Asplundh Concert Hall  
Philips Memorial Building

Tickets: \$10 General Admission / \$5 WCU ID/  
Kids under 12

Tickets available at the SSI Service Center or  
by calling 610-436-2266

Ticket proceeds benefit Miss WCU 2017's  
Service Platform.

Don't miss the competition to find Miss WCU 2017 as we celebrate the crowning of our 19th WCU Titleholder. Ashley Lyles, Miss WCU 2016, will be on hand as over 20 contestants compete in talent, interview, evening gown, on-stage question and casual wear. This year's award-winning, full-scale show will feature two production numbers, former titleholders, special guests, and WCU performing groups. WCU spirit and pride will fill Asplundh during this exciting event that awards over \$3,000 in scholarships and prizes.



## Alumni Dance Chapter

## WINTER DANCE FESTIVAL

### Dance-Versity

SATURDAY, JANUARY 14, 2017 AT 8 PM

SUNDAY, JANUARY 15, 2017 AT 2 PM

SNOW DATE FOR 1/14/17:

SUNDAY, JANUARY 15, 2017 AT 7 PM

Madeleine Wing Adler Theatre, Performing Arts Center

General Admission: Adults \$15

WCU ID/Children/Seniors \$10

The Alumni Dance Chapter proudly presents its ninth Winter Dance Festival, "Dance-Versity". In addition to promoting the artistic and entertaining side of dance, the chapter will explore the many diverse capabilities of dance. Dance pieces will be performed by WCU alumni, the University Dance Company, and guest performers from local studios and companies. As in past years, proceeds will benefit the Barbara J. Lappano Dance Scholarship. Please join us in celebrating our differences through the universal language of dance. For ticket information call 610-436-2266.

Learn more: [wcuadc@yahoo.com](mailto:wcuadc@yahoo.com).



# *National* **STUDENT TEACHING & SUPERVISION CONFERENCE**

**APRIL 28-29, 2017**

This is the 11th annual National Student Teaching and Supervision Conference and the third held at West Chester University. The purpose of the conference is to showcase the capstone event in teacher candidate preparation by providing professional educators with the opportunity to demonstrate best practices as they relate to the student teaching experience and/or clinical experience and the enhancement of knowledge, skills and dispositions of teacher candidates, cooperating teachers, administrators, and university supervisors. Though the focus is on the capstone experience, it does not preclude work in early field experiences, which play a vital part in candidates' preparation. Proposals from all areas of teacher preparation are sought. These proposals are double blind reviewed to ensure quality presentations. In addition to a keynote address; an educational forum session, and concurrent sessions, there is a teacher candidate poster session.



Register online at: [www.nstsc.org](http://www.nstsc.org)

# WEST CHESTER UNIVERSITY *Alumni* **ASSOCIATION**

*Come on out and celebrate with other alumni at these events!*



Visit [wcualumni.org](http://wcualumni.org) to see all the events throughout the year both locally and nationally.

## **AUGUST**

**26** WCU Student Move-In Day

## **SEPTEMBER**

**24** Family Weekend

## **OCTOBER**

**21** Family Fun Day at Linvilla Orchards

**21-23** Homecoming Weekend

## **DECEMBER**

**8** An Evening with Santa

## **APRIL**

**1** 134th Annual Presidential Scholarship Community Gala

## **MAY**

**12** Class of 2017 Senior Send-Off





## BRANDYWINE BALLET

### *Colour Brillante 2016*

FRIDAY, OCTOBER 21, 10:00 AM

SATURDAY, OCTOBER 22, 7:00 PM

SUNDAY, OCTOBER 23, 2:00 PM

### *The Nutcracker 2016*

FRIDAY, DECEMBER 9, 10:00 AM

SATURDAY, DECEMBER 10,

12:00 PM AND 4:00 PM

SUNDAY, DECEMBER 11, 2:00 PM

THURSDAY, DECEMBER 15, 10:00 AM

SATURDAY, DECEMBER 17,

12:00 PM AND 4:00 PM

SUNDAY, DECEMBER 18, 6:00 PM

Ask about our *Nutcracker* teas!

### *Spring Series*

FRIDAY, MAY 19, 10:00 AM

SATURDAY, MAY 20, 12:00 PM AND 4:00 PM

SUNDAY, MAY 21, 2:00 PM

[www.brandywineballet.org](http://www.brandywineballet.org)



## GILBERT & SULLIVAN SOCIETY OF CHESTER COUNTY

*Musical theatre for the entire family!*

### *Cox and Box*

NOVEMBER 11-13

CHESTER COUNTY HISTORICAL SOCIETY

Mr. Cox rents an apartment and works all day as a hatter. Mr. Box rents an apartment and works all night as a printer. When one of them has the day off, tempers flare as they realize they are sharing one apartment

### *Ruddigore*

JANUARY 26 AT 8PM

JANUARY 27 AT 8PM

JANUARY 28 AT 2 AND 8PM

JANUARY 29 AT 2PM

MADELINE WING ADLER THEATRE,  
PERFORMING ARTS CENTER

Jam packed with ghosts, ghouls, curses, madness, jealousy, and of course a Victorian-era love story, this topsy-turvy musical is a delight for all ages.

Visit our website and join our mailing list for more information about auditions and performances.

[www.gsschesco.org](http://www.gsschesco.org)



## A CAPPELLA POPS

SATURDAY, MAY 13, 2017 | 7:30 PM

MADELEINE WING ADLER THEATRE,  
PERFORMING ARTS CENTER

GENERAL ADMISSION: ADULTS \$20  
SENIORS/STUDENTS \$15

Back for its third season at the Madeleine Wing Adler Theatre, A Cappella Pops presents an exciting evening of contemporary pop, jazz and oldies sung in the irrepressible style that makes Pops an audience favorite. With their unique blend of great vocals and high energy, Pops will entertain you with gusto!

A Cappella Pops has been entertaining audiences in the Greater Delaware Valley and beyond since 2000. From the World Café Live to the Kimmel Center, from Manhattan to the White House, from New Zealand to South Jersey, Pops keeps audiences coming back for more.

Tickets for this performance will be available at [www.acappellapops.com](http://www.acappellapops.com) after March 1, 2017.

For further information, call 888-886-2923.

# Lectures

## FRANK WARREN'S POSTSECRET LIVE

*Sponsored by the Office of Social Equity, Wellness Promotion and the Women's Center*

Tuesday, March 29 | 7:00 pm  
Emilie K. Asplundh  
Concert Hall

Frank Warren started PostSecret as a community art project where he invited total strangers to anonymously mail in their secrets on a homemade postcard. This simple act sparked a global phenomenon. Frank has received over 1 million secrets in his mailbox with more arriving every day but Sunday. PostSecret.com has won seven Webby Awards and is the most visited advertisement-free blog in the world. The postcards have been curated for

five New York Times bestselling books and have been exhibited at the Museum of Modern Art and the American Visionary Art Museum. Frank has traveled the world sharing secrets and stories from Australia to the White house. There is a PostSecret album, a PostSecret TED Talk, and a PostSecret Play on tour. In 2011 Frank was awarded the 'HopeLine Lifetime Achievement Award' for his work on suicide prevention and was invited to the White House to work on issues of mental wellness. Frank lives in Germantown, Maryland, with his wife and daughter.

For more information, contact [atorres3@wcupa.edu](mailto:atorres3@wcupa.edu)

## WCU chooses LOVE and LIFE

*With Jamie Tworkowski*

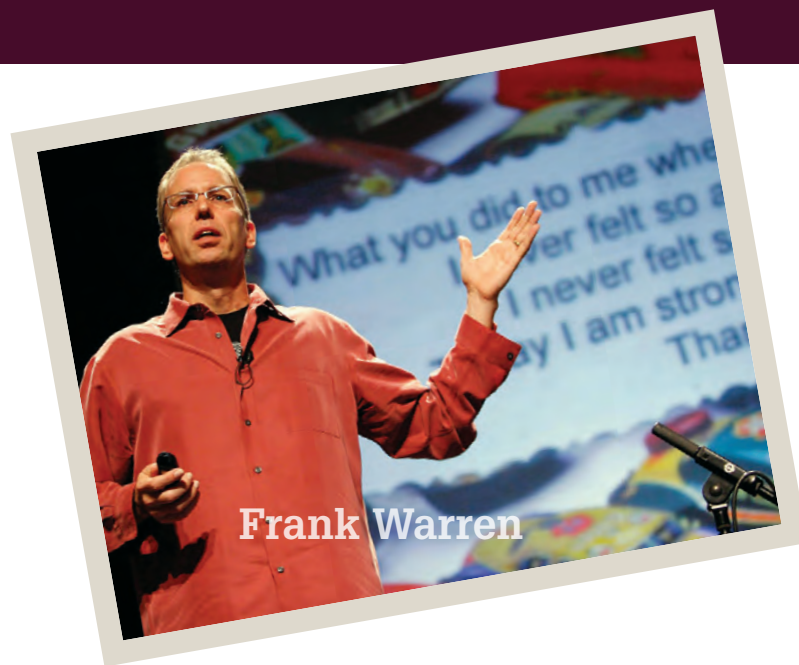
Thursday, September 29  
8:00 pm  
Sykes Student Union  
Ballroom

**FREE TO ALL**

Suicide is the third leading cause of death among people 15-24. But a lot gets lost in the numbers and in the words "suicide prevention." TWLOHA founder Jamie Tworkowski believes what matters most are the people, the real lives and real stories behind the statistics.



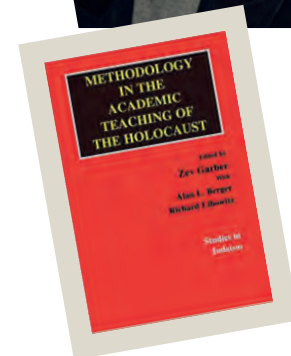
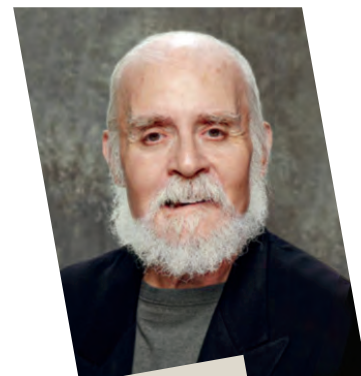
With honesty and humanity, Tworkowski emboldens audiences with his message to "Please Stay Alive," aiming to break the silence surrounding issues such as depression and addiction while encouraging people to get the help they need and deserve.



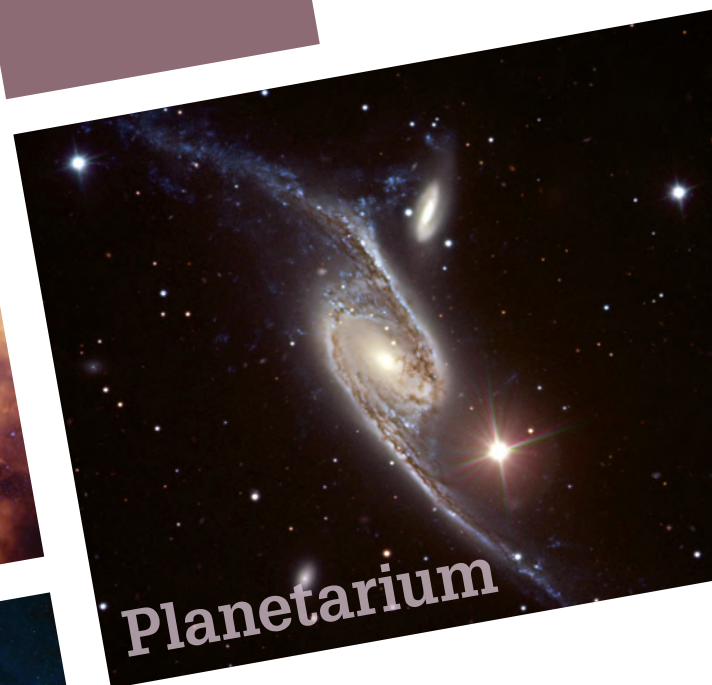
## Holocaust and Genocide Studies Annual Lecture Series

Monday, November 7 | 7:30 pm  
Sykes Theatre

Zev Garber, professor emeritus at Los Angeles Valley College, will speak on the subject of "Teaching the Shoah." Professor Garber is the author of numerous books on the Holocaust, Jewish history, and Jewish-Christian relations, including Academic Approaches to Teaching Jewish Studies (Rowman and Littlefield, 1987), and Mel Gibson's Passion: The Film, the Controversy, and Its Implications (Purdue University Press, 2006).







## PLANETARIUM SERIES

The Sandra F. Pritchard Mather Planetarium at West Chester University holds evening shows for the general public. These live monthly presentations are hosted by a PhD astronomer and consist of an overview of what is visible in the current night sky. In addition, each show focuses on a particular aspect of astronomy. Shows start promptly at 7 p.m. and run approximately one hour. Admission is \$6 per person. Tickets must be purchased ahead of time and can be ordered online at [www.wcupatix.com](http://www.wcupatix.com) or over the phone by contacting the SSI ticket office at (610) 436-2266.

For more detailed information about the shows or the Mather Planetarium, please see our website at: <http://www.wcupa.edu/planetarium>.

- September 2, 2016: **We Are Star Stuff**
- October 14, 2016: **Star Clusters, Stellar Siblings**
- November 4, 2016: **Raining Stars**
- December 2, 2016: **Dethroning the Earth**
- January 27, 2017: **Mars & Venus: Our Planetary Neighbors**
- February 24, 2017: **A Star is Born**
- March 31, 2017: **A Universe of Galaxies**
- April 28, 2017: **A Total Solar Eclipse**

# 2016-2017 SEASON

## AUGUST

- 26 WCU Student Move-In Day

## SEPTEMBER

- 2 Planetarium Series: We Are Star Stuff
- 7 Artist Reception: Glimpse/Glimmer
- 10 Football at Farrell Stadium
- 16 Faculty Recital: Anita Greenlee, organ
- 19 Faculty Recital: David Cullen, guitar
- 23 Yesterday & Today
- 24 Family Weekend
- 24 Football at Farrell Stadium
- 25 Collegiate Marching Band Festival
- 26 Faculty Recital: Gloria Galante, harp
- 29 Jamie Tworowski: WCU chooses LOVE and LIFE
- 29 Wind Ensemble & Wind Symphony
- 30 President's Speaker Series: Garrison Keillor

## OCTOBER

- 2 School of Music Honors Convocation
- 3 Faculty Recital: Randall Scarlata, baritone
- 6 Artist Reception: Phantoms, Phantasies, and Phenomena
- 6 Madeleine Wing Adler Concert Series
- 6 Symphony Orchestra

- 8 Football at Farrell Stadium
- 13 Fall Choral Festival
- 14 Planetarium Series: Star Clusters, Stellar Siblings
- 14-22 Department of Theatre & Dance: Once Upon a Mattress
- 15 Artist Reception: Philadelphia Water Color Society
- 17 Faculty Recital: Igor Resnianski, piano
- 19 Musica Humana Vocal Consort
- 20 New Music Concert
- 22 Football at Farrell Stadium
- 21 Family Fun Day at Linvilla Orchards
- 21, 22 Brandywine Ballet: Fall Series 2016
- 21-23 Homecoming Weekend
- 22 Homecoming Parade
- 24 Faculty Recital: In Young Lee, soprano
- 26 West Chester Halloween Parade
- 28 Concert Choir & Mastersingers

## NOVEMBER

- 2 Artist Reception: Art Works! A Retrospective 1951-2008
- 2 Guest Artist: Percussion Ensemble of Costa Rica
- 2 Vocal Honors Recital
- 3 Madeleine Wing Adler Concert Series
- 3 Woodwind Chamber Ensemble

- 4 Criterions Jazz Ensemble
- 4 Planetarium Series: Raining Stars
- 4 Steep Canyon Rangers
- 5 Football at Farrell Stadium
- 7 Holocaust & Genocide Studies Annual Lecture: Zev Garber
- 9 Keyboard Honors Recital
- 11, 12 Department of Theatre & Dance: Dance: *Veer*
- 11-13 Gilbert & Sullivan Society: Cox and Box
- 13 Harp Festival
- 13 Wind Symphony & Concert Band
- 14 Faculty Recital: Daniel Cherry, trombone
- 16 Artist Reception: Sentinals
- 16 Guitar Ensemble
- 16 Keyboard Conversations: Festive French Fare
- 16-20 Department of Theatre & Dance: *The Long Christmas Ride Home*
- 17 Chamber Orchestra
- 18 Latin Jazz Ensemble & Jazz Combos
- 19 Liberty Wind Symphony
- 19 Neil Berg's 100 Years of Broadway
- 20 Irving H. Cohen Memorial Concert featuring Symphony Orchestra
- 21 Faculty Recital: Quintsylvania Winds
- 22 Percussion Ensemble

- 28 Faculty Recital: Jean-Christophe Dobrzelewski, trumpet
- 29 Statesmen & Vocal Jazz
- 30 Flute Ensemble

## DECEMBER

- 1 Collegium Musicum
- 1 Madeleine Wing Adler Concert Series
- 2 Planetarium Series: Dethroning the Earth
- 2 West Chester Old-Fashioned Christmas Parade
- 3 95th Holiday Program
- 3 The Greatest Pirate Story Never Told!
- 4 Liberty Youth Wind Symphony
- 5 Faculty Recital: Jon Fowler, tuba
- 7 New Music Concert
- 8 An Evening with Santa
- 9, 10 Opera Production: I Capuletti ed Montecchi
- 9-18 Brandywine Ballet: The Nutcracker 2016
- 11 Wind Ensemble
- 17 Kennett Symphony Children's Choir

## JANUARY

- 14, 15 Alumni Dance Chapter Winter Dance Festival
- 26-29 Gilbert & Sullivan Society: Ruddigore
- 27 Planetarium Series: Mars & Venus: Our Planetary Neighbors
- 30 Faculty Recital: Vincent Craig, piano



## FEBRUARY

- 1 Artist Reception: Art, Spirit, and Beyond
- 2 Madeleine Wing Adler Concert Series
- 4 Miss West Chester University 2017
- 6 Faculty Recital: Terry Klinefelter, piano
- 9 Artist Reception: Bright Harmony
- 9 New Music Concert
- 10 Concert Choir
- 13 Faculty Recital: Ovidiu Marinescu, cello
- 16 Chamber Winds & Concert Band
- 17 Cirque Zuma Zuma
- 19 Mastersingers
- 20 Faculty Recital: Stephen Ng, tenor
- 23 Wind Ensemble & Wind Symphony
- 24 Planetarium Series: A Star is Born
- 25 Committed
- 26 Symphony Orchestra
- 27 Faculty Recital: Henry Grabb, oboe & Jon Gaarder, bassoon
- 28 Musica Humana Vocal Consort

## MARCH

- 1 Musica Humana Vocal Consort
- 2 Madeleine Wing Adler Concert Series
- 2 Winter Choral Festival
- 2-5 Department of Theatre & Dance: *Blithe Spirit*

- 3 The Divine Hand Ensemble
- 5 Brass Chamber Recital
- 5 Cat Angel Network Concert
- 6 Faculty Recital: Kimberly Reighley, flute
- 8 Keyboard
- Conversations: An American Salute
- 10 President's Speaker Series: Linda Ronstadt
- 11 Caladh Nua
- 18 Missoula Children's Theatre: Treasure Island
- 20 Faculty Recital: Ralph Sorrentino, percussion
- 21 Bach Celebration
- 22-25 27th Annual Jazz Festival
- 27 Faculty Recital: Emily Bullock, mezzo-soprano
- 28 Guest Artist: Venice String Quartet
- 29 Lecture: Frank Warren's PostSecret Live
- 31 Hypnotic Brass Ensemble
- 31 Planetarium Series: A Universe of Galaxies
- 31-1 Department of Theatre & Dance: Student Written One Acts

## APRIL

- 1 34th Annual Presidential Scholarship Community Gala
- 3 Faculty Recital: Elizabeth Pfaffle, horn

- 4 Artist Reception: Department of Art + Design Faculty Exhibition
- 4 Tom Smith Cello Scholarship Benefit Concert
- 6 Madeleine Wing Adler Concert Series
- 6 New Music Concert
- 7, 8 Opera Production: The Telephone and the Medium
- 8 WCU Pre-Collegiate Piano Competition
- 10 Tamagawa University
- 11 Flute Ensemble
- 12 Collegium Musicum
- 13 Latin Jazz & Jazz Combos
- 17 Faculty Recital: Mark Rimple, lute and guests Drew Minter and Mary Springfels
- 18 Percussion Ensemble
- 19 Artist Reception: Alumni Exhibition
- 19 Guitar Ensemble
- 20 Vocal Honors Recital
- 20-23 Department of Theatre & Dance: *The Honorable Maid*
- 23 Liberty Wind Symphony
- 23 WCU Pre-Collegiate Piano Competition Winners Recital
- 24 Faculty Recital: Peter Paulsen, bass
- 25 Chamber Winds
- 26 Wind Symphony & Concert Band
- 27 Spring Choral Festival

- 27-29 Department of Theatre & Dance: *Serendipity*
- 28 Planetarium: A Total Solar Eclipse
- 28 Statesmen Jazz Ensemble
- 28-29 National Student Teaching & Supervision Conference
- 30 Wind Ensemble

## MAY

- 2 Keyboard Honors Recital
- 3 Chamber Orchestra
- 4 Woodwind Chamber Recital
- 5 Criterions Jazz Ensemble
- 5 Stunt Dog Experience
- 6 Kennett Symphony Children's Choir
- 7 Liberty Wind Youth Symphony
- 7 Symphony Orchestra & Choirs
- 8 Collegium Musicum
- 12 Class of 2017 Senior Send-Off
- 13 A Cappella Pops
- 19-21 Brandywine Ballet: Beauty & the Beast





**Department of Cultural  
and Community Affairs**

13/15 University Avenue  
West Chester University  
West Chester, PA 19383

NON-PROFIT ORG.  
U. S. POSTAGE  
PAID  
PERMIT NO. 309  
WEST CHESTER, PA

