



Anderson Hall

Building Specific Fire Safety Information

Life Safety Systems



Anderson Hall is equipped with:

- Fire Detection
- Evacuation Alarms
- Fire Sprinklers

All fire alarms are monitored by Public Safety

Life Safety Systems



Anderson Hall is equipped with:


- Emergency Door releases that will unlock doors for exit and sound the security alarm
- Public Address System that alerts all areas of the building
- Emergency Call boxes/Buttons in Elevator Lobbies and Elevators that contact Public Safety Dispatcher
- AED in the First Floor Lobby and 4th Floor Lobby


Fire Safety Maps


Maps of relevant Fire safety equipment, Evacuation routes, and Areas of Rescue Assistance

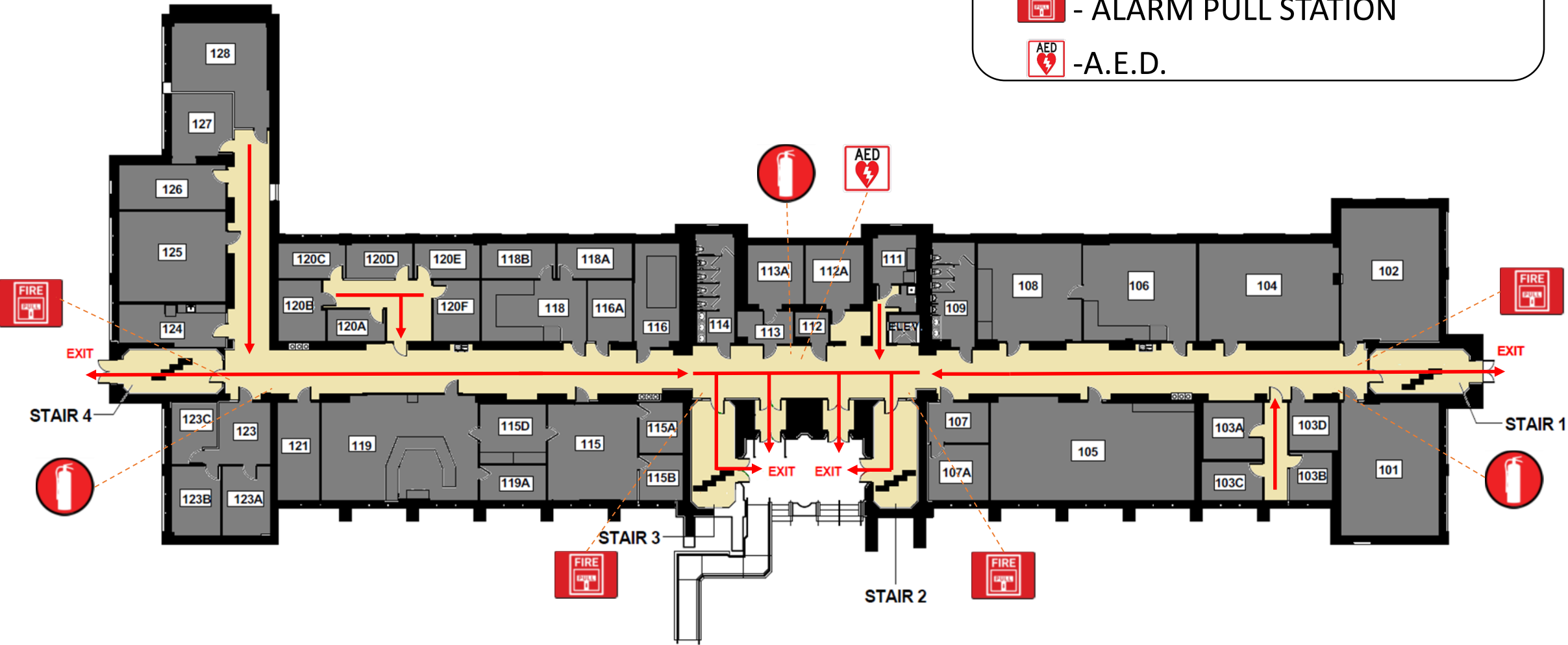
Anderson Hall
1st Floor

LEGEND

 - FIRE EXTINGUISHER

 - ALARM PULL STATION

 -A.E.D.



Anderson Hall
2nd Floor

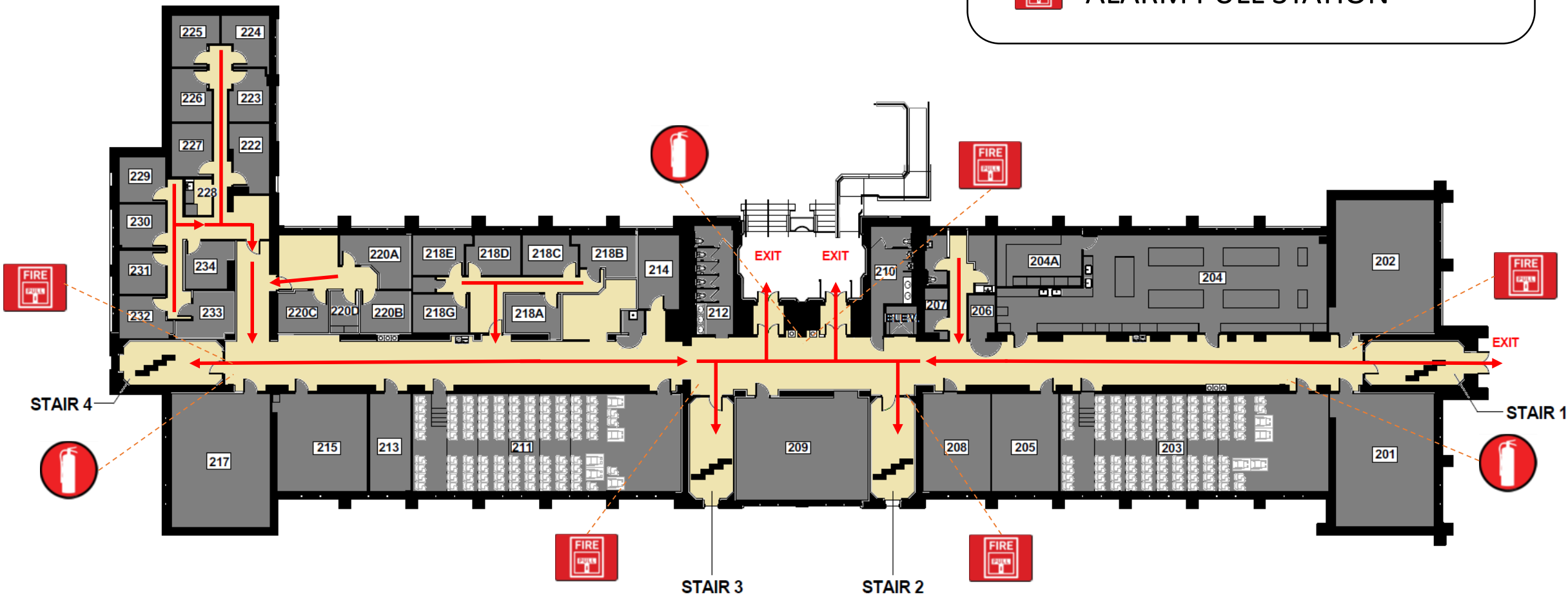
LEGEND



- FIRE EXTINGUISHER



- ALARM PULL STATION



Anderson Hall
3rd Floor

LEGEND



- FIRE EXTINGUISHER



- ALARM PULL STATION



-AREA OF RESCUE ASSISTANCE



Anderson Hall 4th Floor

LEGEND



- FIRE EXTINGUISHER



- ALARM PULL STATION



-A.E.D.



-AREA OF RESCUE ASSISTANCE



Anderson Hall
5th Floor

LEGEND



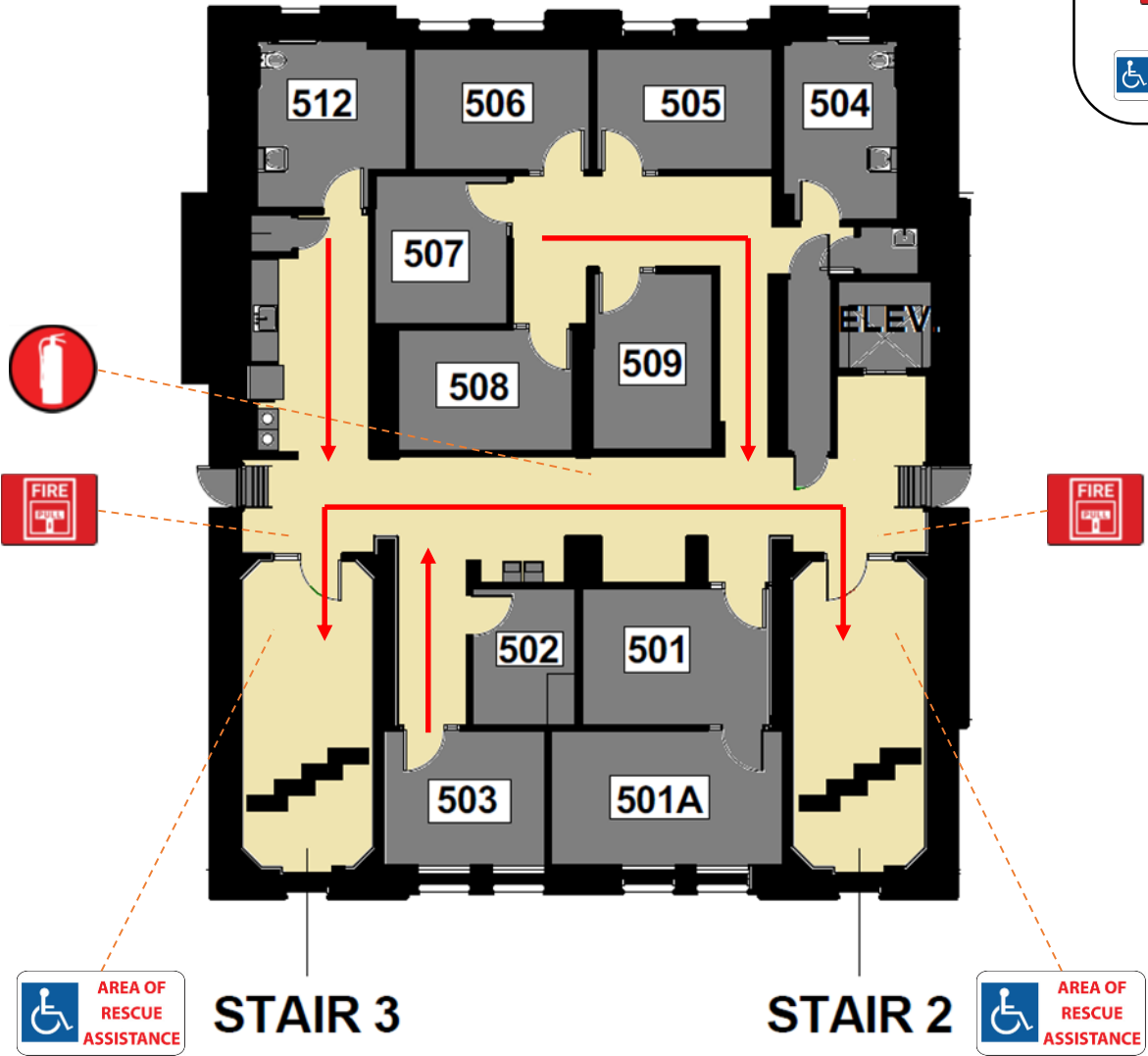
- FIRE EXTINGUISHER



- ALARM PULL STATION



- AREA OF RESCUE ASSISTANCE





Designated Meeting Place

North exits - On the lawn between Ruby Jones and Recitation

South exits- On the lawn in front of Ram Statue

Do not gather in the parking lot

Managers should take attendance of their employees

Faculty with classes should take attendance of their students



Reporting a Fire

If you discover smoke or flame, immediately initiate the following actions:

- Activate the fire alarm system by pulling a manual pull station or verbally notify the building's occupants of the fire if the alarm system is not functioning.
- Evacuate from the building and report to the Designated Meeting Location and await further instruction from a Public Safety representative.
- Even if the fire alarm system has already been activated, (at safe distance from the fire) contact the Public Safety Department at 610-436-3311 to report the fire.





- When the building fire evacuation alarm sounds, **all occupants** are required to **evacuate immediately** by using the closest available exit point. Evacuations should be conducted in a calm and orderly manner.
- When evacuating the building, only take essential belongings. This includes items such as keys, WCU ID, wallets, purses, coats, medications, etc.
- When evacuating the building, remember to turn off lights and close doors to rooms as you leave.

Evacuation by Fire Alarm



- While evacuating remind others to leave the building and ask if they need assistance. If you are unable to assist or they are unwilling to evacuate; continue evacuating yourself and notify Public Safety of their location.
- Proceed to the Designated Meeting Location and stay there
- Upon receiving an “ALL CLEAR” from Public Safety, staff will assist occupants with re-entry into the building

Evacuation by Fire Alarm

Area of Rescue Assistance

- Occupants that cannot evacuate the building on their own should proceed to the closest **Area of Rescue Assistance** if possible
- After arriving at the Area of rescue Assistance, contact Public Safety at **(610) 436-3311** to advise them of your location
- If getting to the Area of Rescue Assistance is not possible, stay in your room with the door closed. Contact Public Safety at **(610) 436-3311** and let the dispatcher know your location



Health & Safety



Additional Fire Safety Information

- Please visit [Fire Safety page on WCUPA.EDU](https://www.wcupa.edu/firesafety)
- If you have questions or concerns; Contact **Environmental Health & Safety at 610-436-3333**

