



Main Hall

Building Specific Fire Safety Information

Life Safety Systems



Main Hall is equipped with:

- Fire Detection
- Evacuation Alarms
- Fire Sprinklers

All fire alarms are monitored by Public Safety

Life Safety Systems

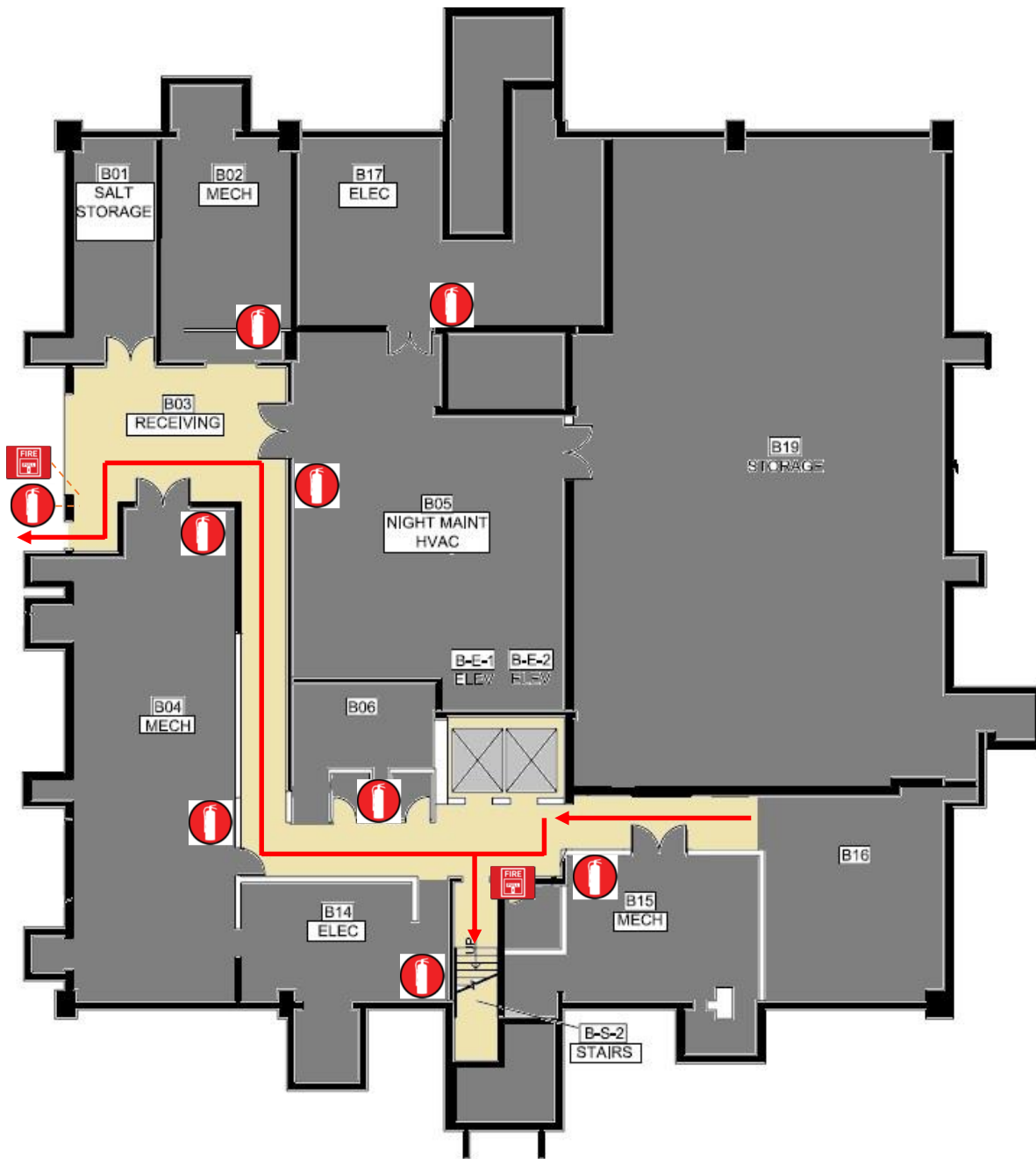


Main Hall is equipped with:

- Emergency Call boxes/Buttons in Elevator Lobbies and Elevators that contact Public Safety Dispatcher
- AED in the First Floor Lobby

Fire Safety Maps

Maps of relevant Fire safety equipment, Evacuation routes, and Areas of Rescue Assistance



MAIN HALL
BASEMENT FLOOR

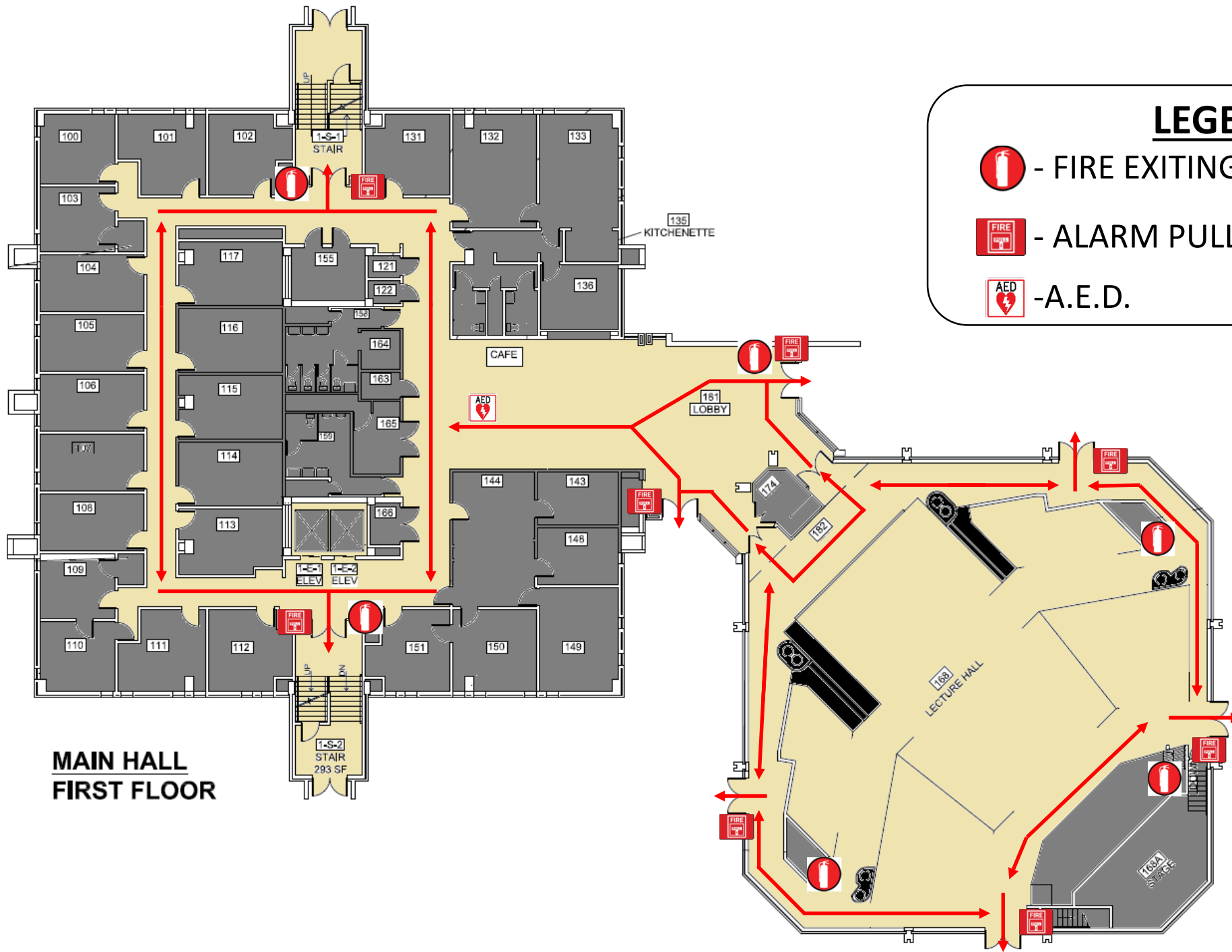
LEGEND



-FIRE EXTINGUISHER



-ALARM PULL STATION




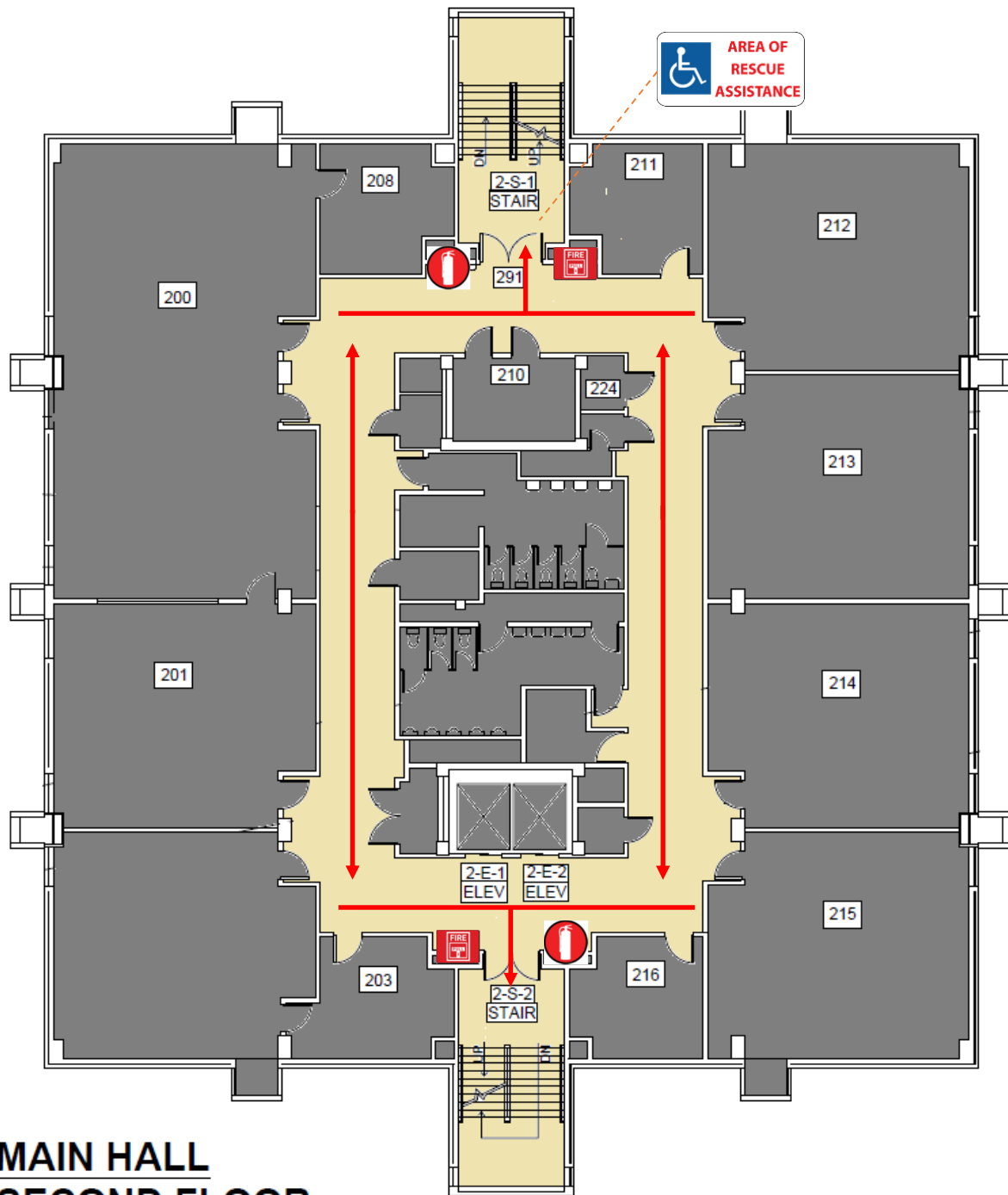
**MAIN HALL
FIRST FLOOR**

LEGEND

 - FIRE EXTINGUISHER

 - ALARM PULL STATION

 -A.E.D.



LEGEND



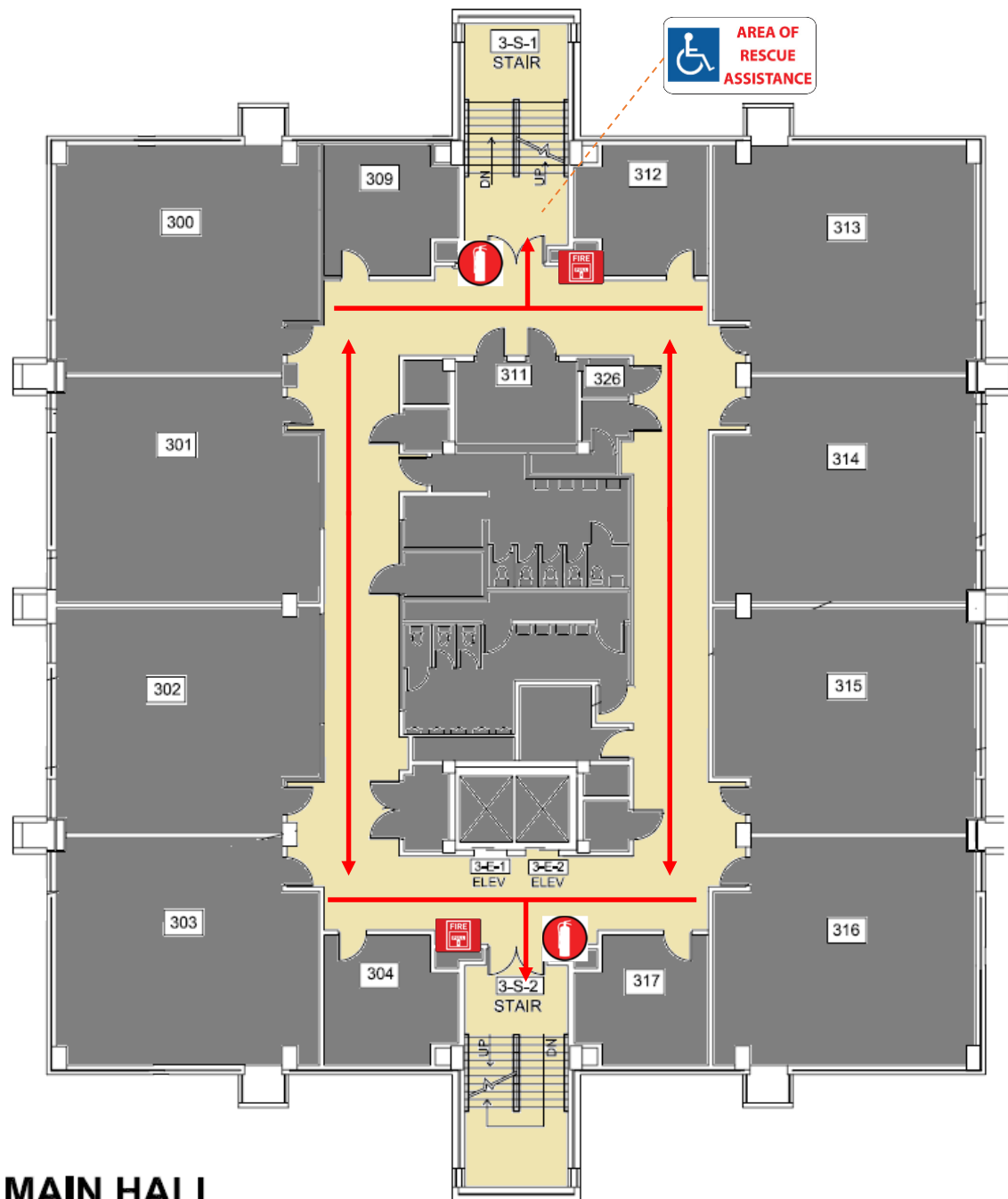
- FIRE EXTINGUISHER



- ALARM PULL STATION



- AREA OF RESCUE ASSISTANCE



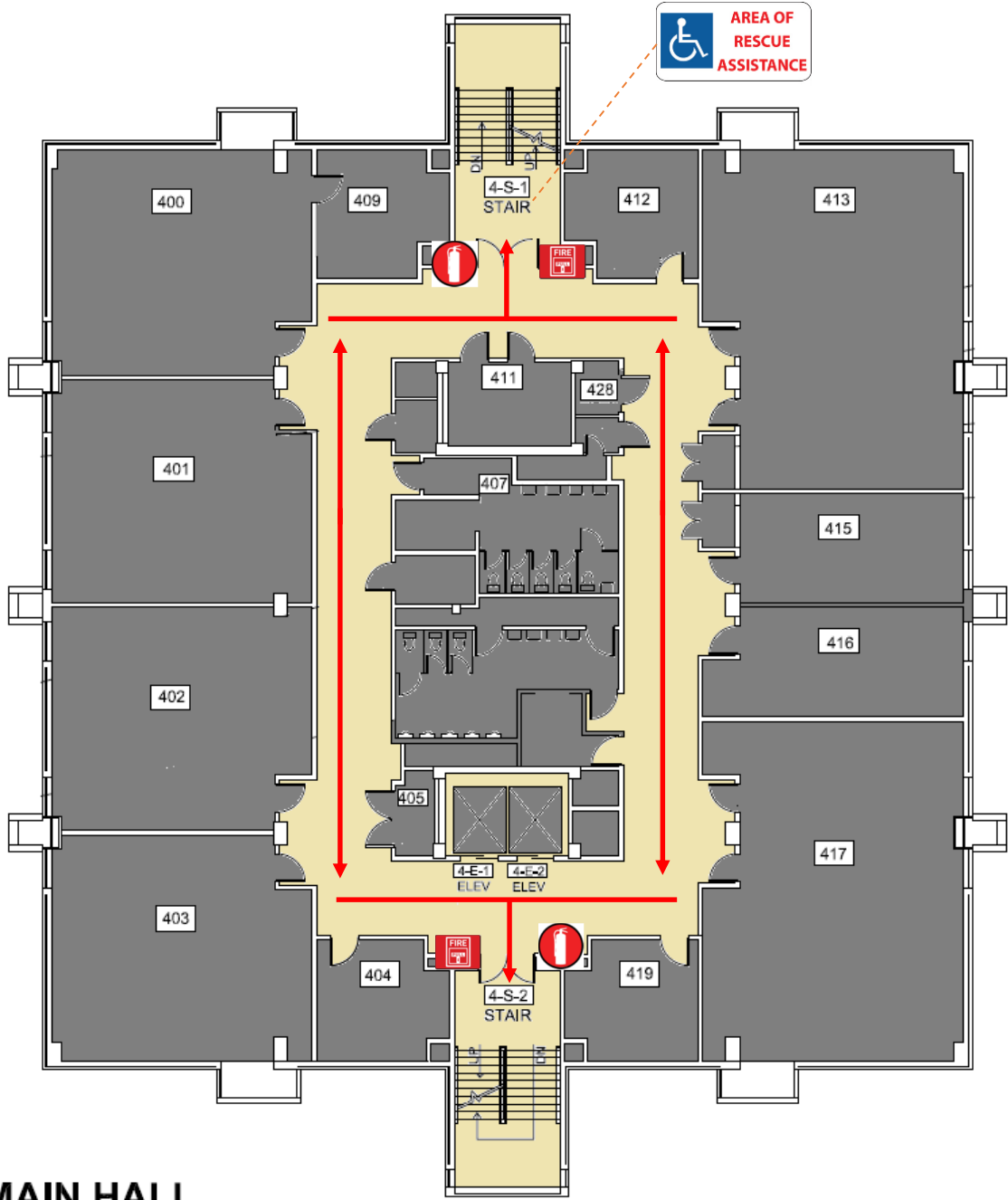
**MAIN HALL
THIRD FLOOR**

LEGEND

 - FIRE EXTINGUISHER




 - ALARM PULL STATION

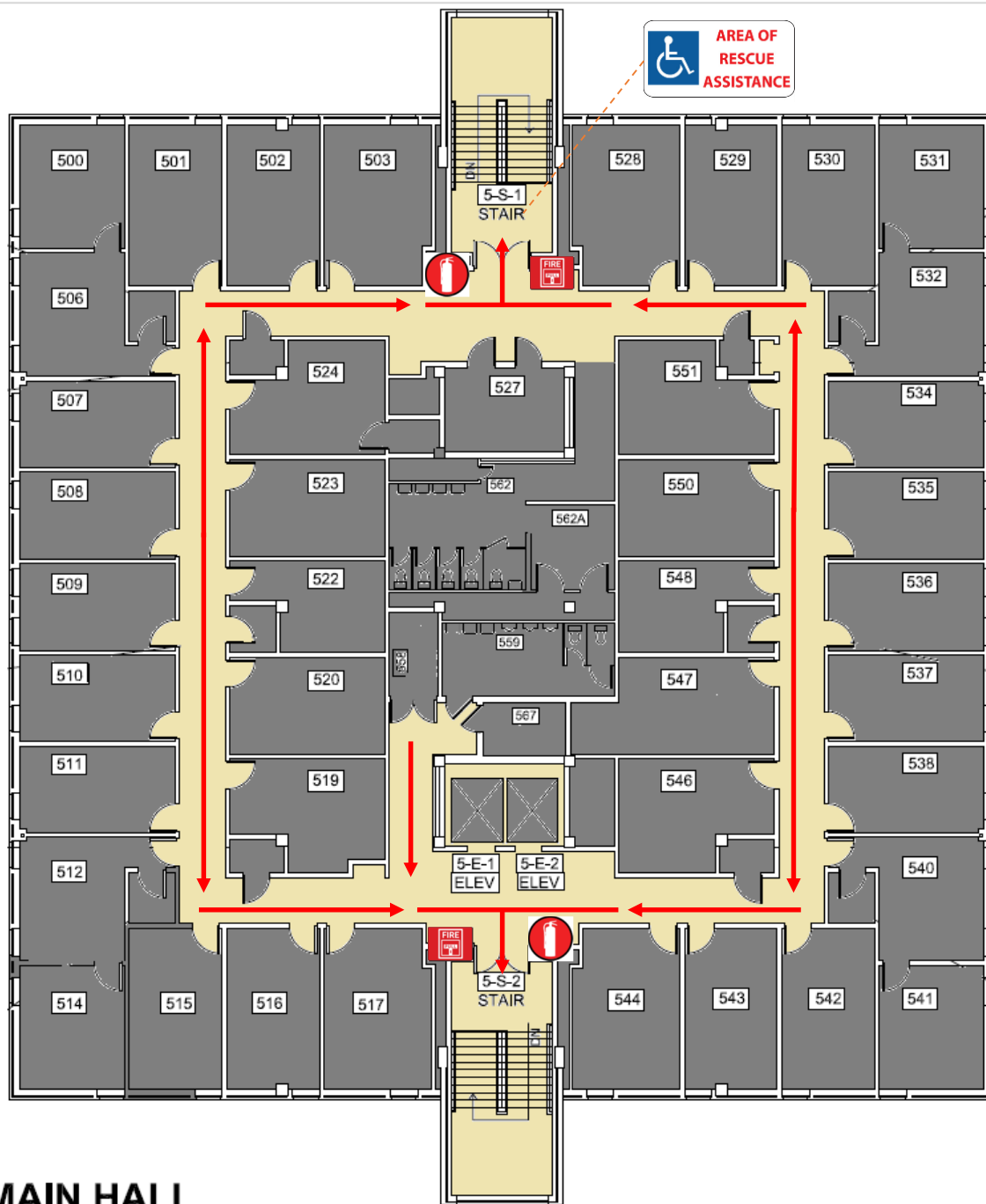
 - AREA OF RESCUE ASSISTANCE



**MAIN HALL
FOURTH FLOOR**

LEGEND

-  - FIRE EXTINGUISHER
-  - ALARM PULL STATION
-  - AREA OF RESCUE ASSISTANCE



**MAIN HALL
FIFTH FLOOR**

LEGEND



- FIRE EXTINGUISHER



- ALARM PULL STATION



- AREA OF RESCUE ASSISTANCE



Designated Meeting Place

On the Quad

Do not gather on the patio- get 50 feet from the building

Managers should take attendance of their employees

Faculty with classes should take attendance of their students



Reporting a Fire

If you discover smoke or flame, immediately initiate the following actions:

- Activate the fire alarm system by pulling a manual pull station or verbally notify the building's occupants of the fire if the alarm system is not functioning.
- Evacuate from the building and report to the Designated Meeting Location and await further instruction from a Public Safety representative.
- Even if the fire alarm system has already been activated, (at safe distance from the fire) contact the Public Safety Department at 610-436-3311 to report the fire.





- When the building fire evacuation alarm sounds, **all occupants** are required to **evacuate immediately** by using the closest available exit point. Evacuations should be conducted in a calm and orderly manner.
- When evacuating the building, only take essential belongings. This includes items such as keys, WCU ID, wallets, purses, coats, medications, etc.
- When evacuating the building, remember to turn off lights and close doors to rooms as you leave.

Evacuation by Fire Alarm



- While evacuating remind others to leave the building and ask if they need assistance. If you are unable to assist or they are unwilling to evacuate; continue evacuating yourself and notify Public Safety of their location.
- Proceed to the Designated Meeting Location and stay there
- Upon receiving an “ALL CLEAR” from Public Safety, staff will assist occupants with re-entry into the building

Evacuation by Fire Alarm

Area of Rescue Assistance

- Occupants with special needs that cannot evacuate the building on their own should proceed to the closest **Area of Rescue Assistance** if possible
- After arriving at the Area of rescue Assistance, contact Public Safety at **(610) 436-3311** to advise them of your location
- If getting to the Area of Rescue Assistance is not possible, stay in your room with the door closed. Contact Public Safety at **(610) 436-3311** and let the dispatcher know your location



Health & Safety



Additional Fire Safety Information

- Please visit [Fire Safety page on WCUPA.EDU](https://www.wcupa.edu/firesafety)
- If you have questions or concerns; Contact **Environmental Health & Safety at 610-436-3333**

