



Recitation Hall

Building Specific Fire Safety Information

Life Safety Systems



Recitation Hall is equipped with:

- Fire Detection
- Evacuation Alarms
- Fire Sprinklers

All fire alarms are monitored by Public Safety

Life Safety Systems

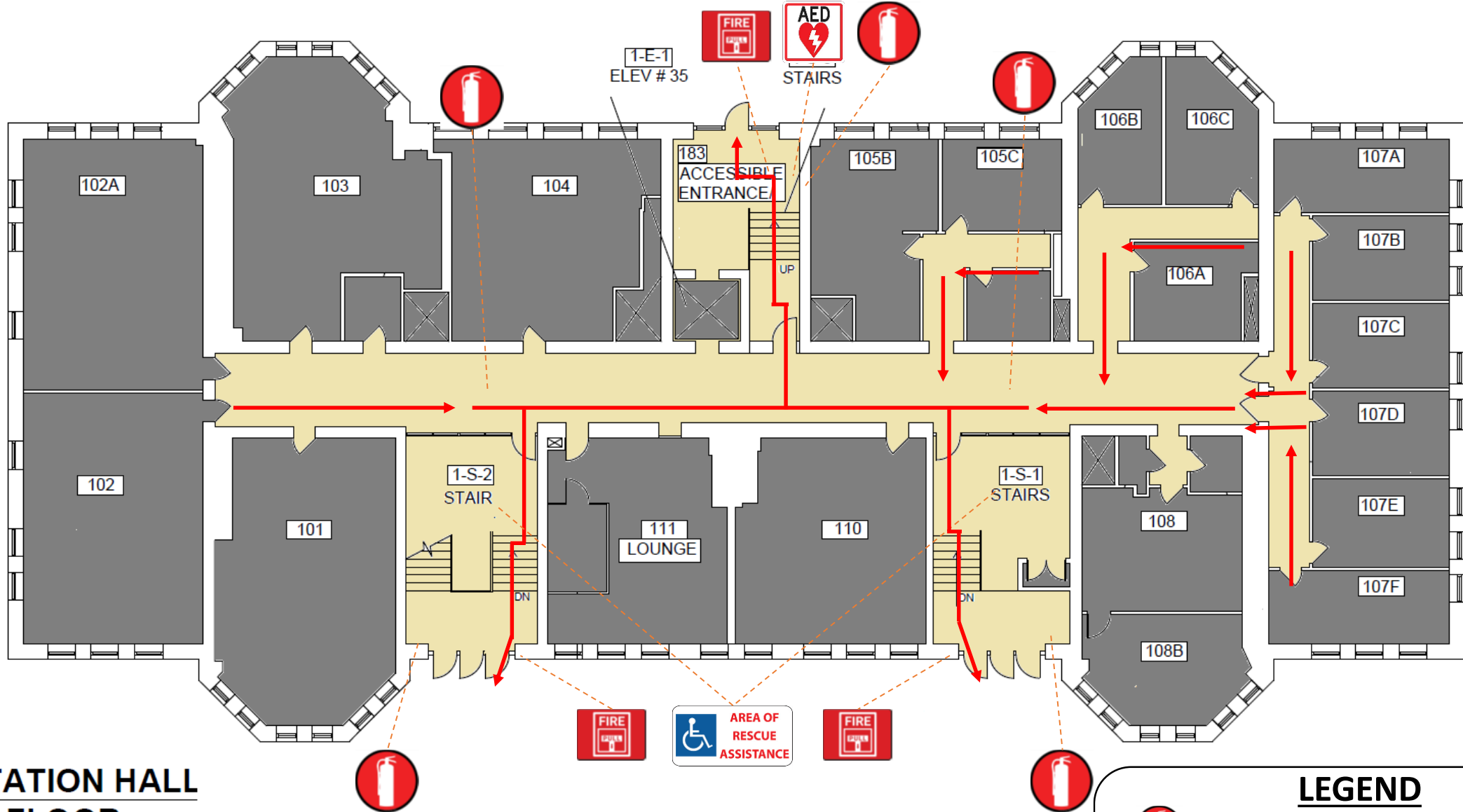


Recitation Hall is equipped with:

- Emergency Call boxes/Buttons in Elevator Lobbies and Elevators that contact Public Safety Dispatcher
- AED at the West Entrance lobby.

Fire Safety Maps

Maps of relevant Fire safety equipment, Evacuation routes, and Areas of Rescue Assistance



RECITATION HALL FIRST FLOOR

LEGEND



-FIRE EXTINGUISHER



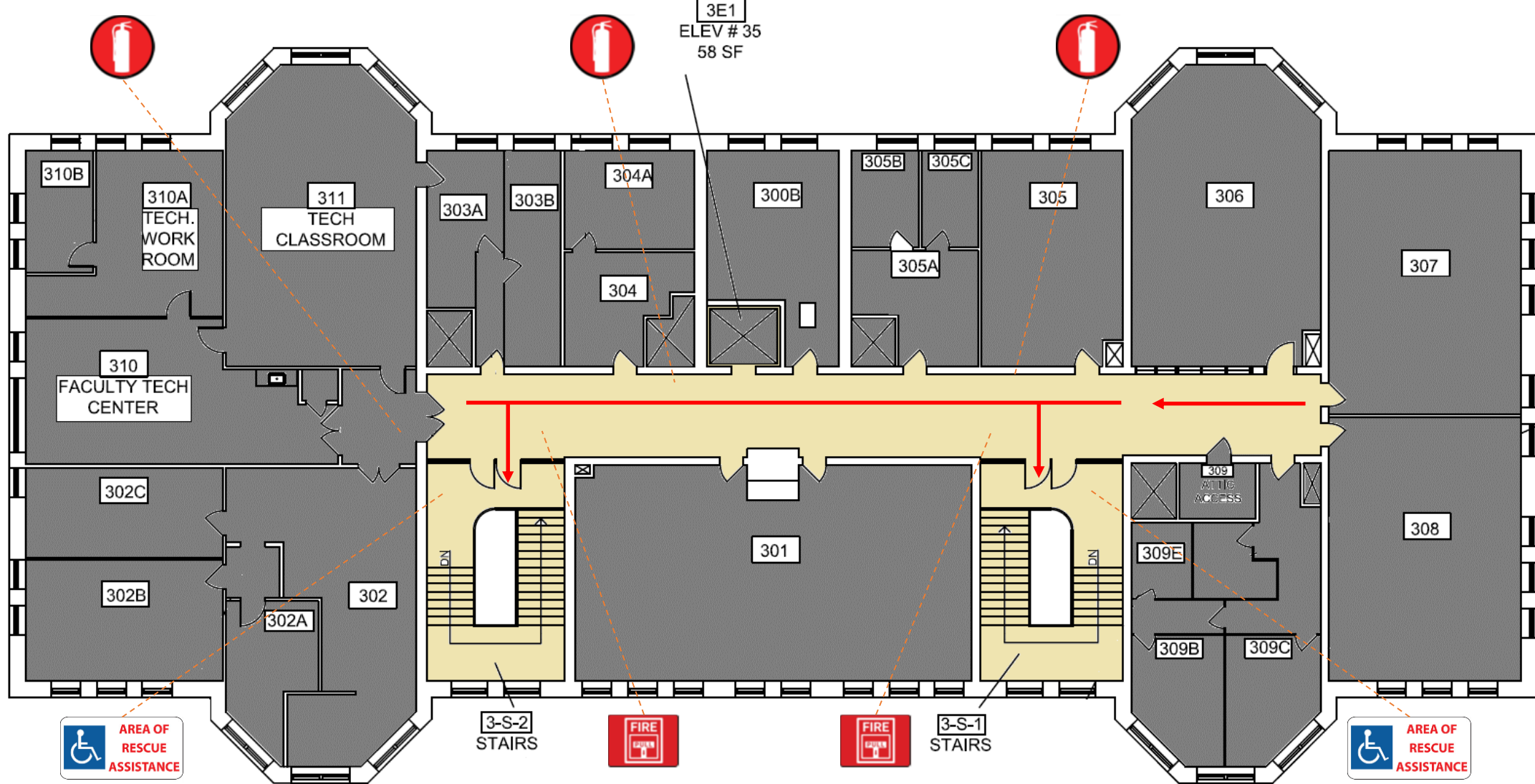
-ALARM PULL STATION



-Area of Rescue Assistance



-A.E.D.



RECITATION HALL THIRD FLOOR

LEGEND



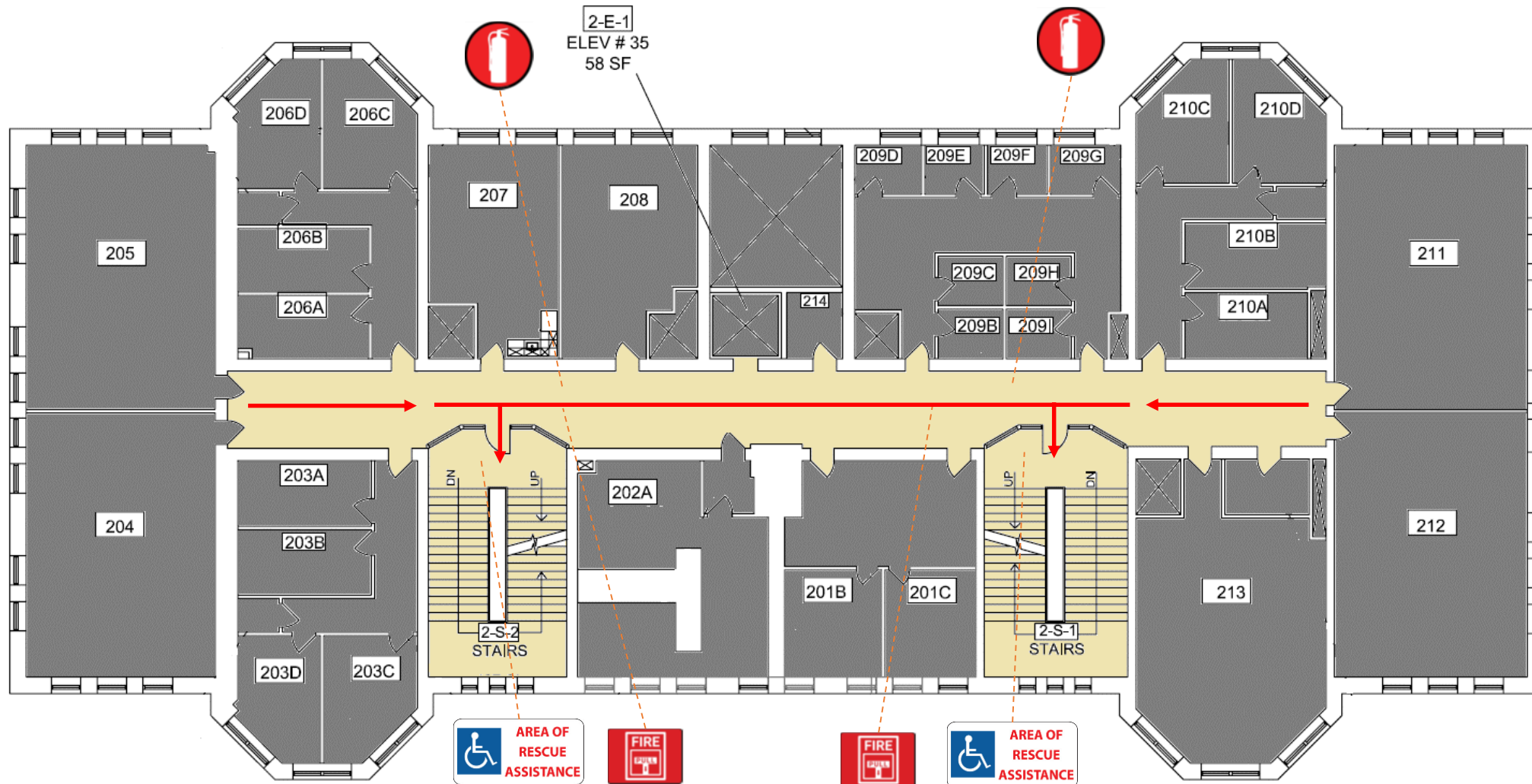
- FIRE EXTINGUISHER



- ALARM PULL STATION



- AREA OF RESCUE ASSISTANCE



RECITATION HALL SECOND FLOOR

LEGEND



- FIRE EXTINGUISHER



- ALARM PULL STATION



- AREA OF RESCUE ASSISTANCE



Designated Meeting Place

On the lawn between Ruby Jones and the Quad

Do not gather in the parking lot

Managers should take attendance of their employees

Faculty with classes should take attendance of their students



Reporting a Fire

If you discover smoke or flame, immediately initiate the following actions:

- Activate the fire alarm system by pulling a manual pull station or verbally notify the building's occupants of the fire if the alarm system is not functioning.
- Evacuate from the building and report to the Designated Meeting Location and await further instruction from a Public Safety representative.
- Even if the fire alarm system has already been activated, (at safe distance from the fire) contact the Public Safety Department at 610-436-3311 to report the fire.





- When the building fire evacuation alarm sounds, **all occupants** are required to **evacuate immediately** by using the closest available exit point. Evacuations should be conducted in a calm and orderly manner.
- When evacuating the building, only take essential belongings. This includes items such as keys, WCU ID, wallets, purses, coats, medications, etc.
- When evacuating the building, remember to turn off lights and close doors to rooms as you leave.

Evacuation by Fire Alarm



- While evacuating remind others to leave the building and ask if they need assistance. If you are unable to assist or they are unwilling to evacuate; continue evacuating yourself and notify Public Safety of their location.
- Proceed to the Designated Meeting Location and stay there
- Upon receiving an “ALL CLEAR” from Public Safety, staff will assist occupants with re-entry into the building

Evacuation by Fire Alarm

Area of Rescue Assistance

- Occupants with that cannot evacuate the building on their own should proceed to the closest **Area of Rescue Assistance** if possible
- After arriving at the Area of rescue Assistance, contact Public Safety at **(610) 436-3311** to advise them of your location
- If getting to the Area of Rescue Assistance is not possible, stay in your room with the door closed. Contact Public Safety at **(610) 436-3311** and let the dispatcher know your location



Health & Safety



Additional Fire Safety Information

- Please visit [Fire Safety page on WCUPA.EDU](https://www.wcupa.edu/fire-safety)
- If you have questions or concerns; Contact **Environmental Health & Safety at 610-436-3333**

