



Lawrence Hall

Building Specific Fire Safety Information

Life Safety Systems



Lawrence is equipped with:

- Fire Detection
- Evacuation Alarms
- Fire Sprinklers - Einstein Bro , Chickie & Pete's, Residence Life, & 214
- Kitchen Hood Fire Suppression- Chickie & Pete's



All fire alarms are monitored by Public Safety

Life Safety Systems



Lawrence is equipped with:




- Auto Closing Fire Doors
- Emergency Call Buttons in Elevators that contact Public Safety Dispatcher
- AED by the Einstein Brothers and Stairs at the Main Entrance. (1st floor)

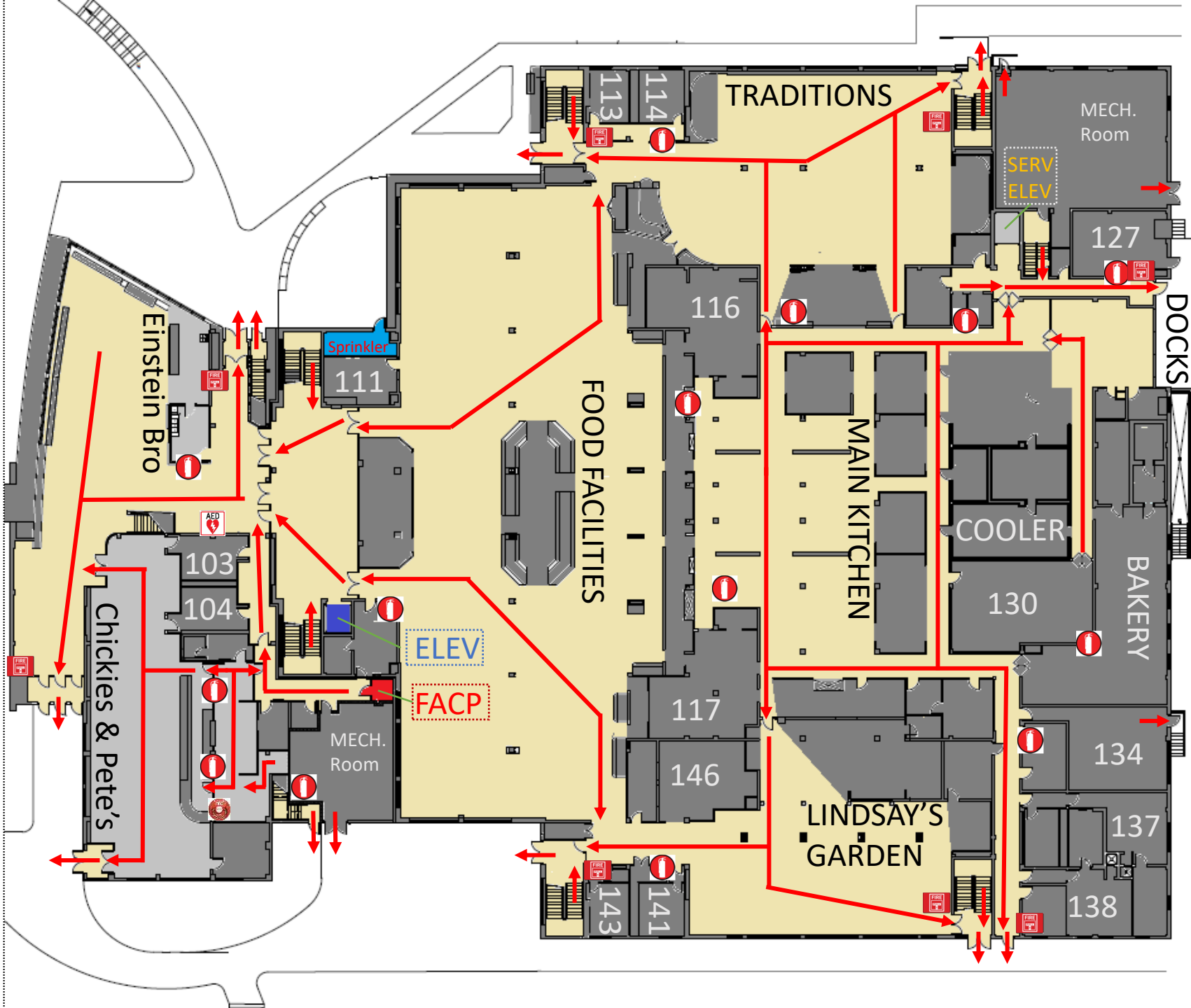
Fire Safety Maps

Maps of relevant Fire safety equipment, Evacuation routes, and Areas of Rescue Assistance

LAWRENCE GROUND FLOOR

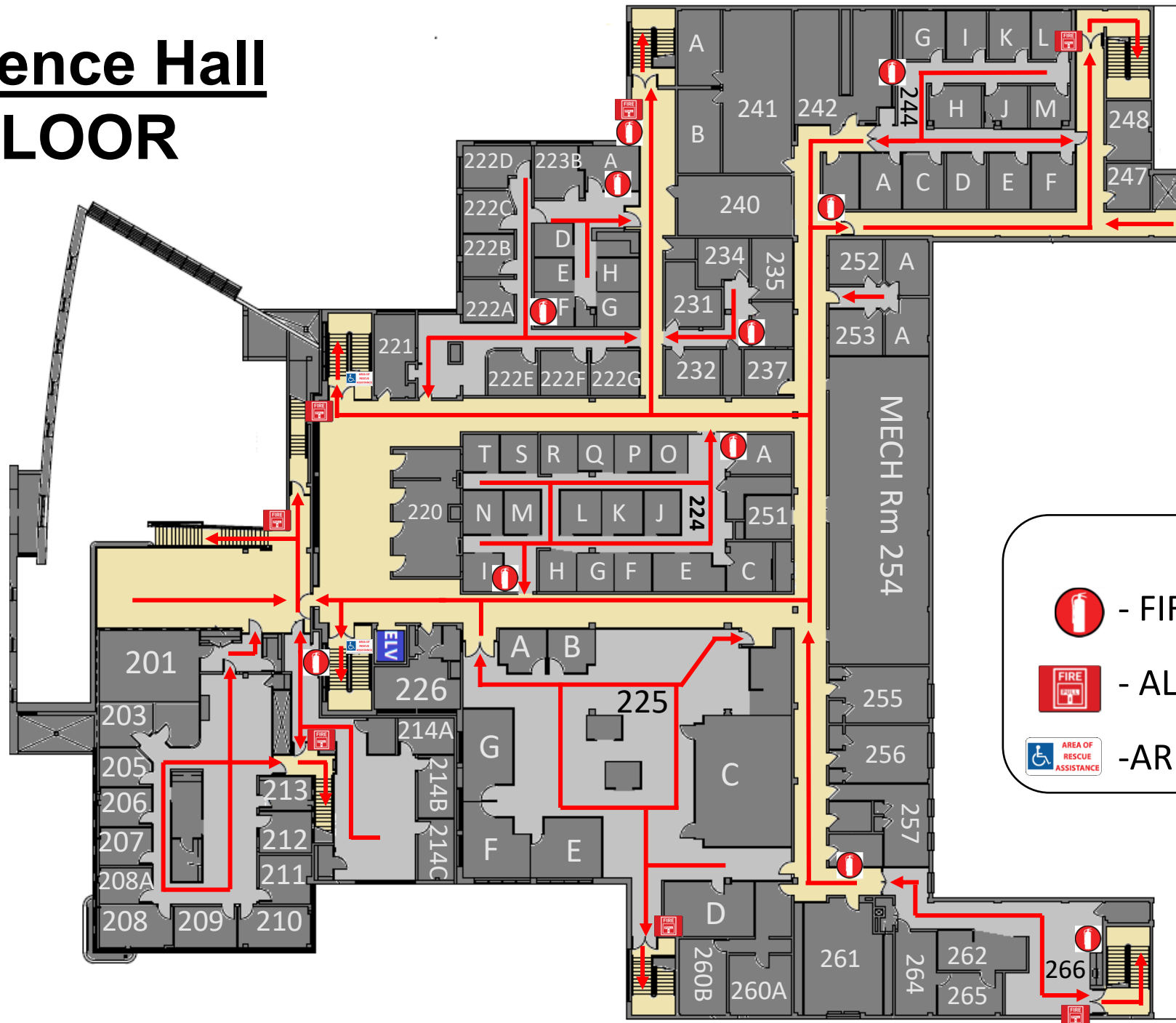
LEGEND

-  -FIRE EXTINGUISHER
-  -ALARM PULL STATION
-  -A.E.D.



Lawrence Hall

2ND FLOOR



LEGEND



- FIRE EXTINGUISHER



- ALARM PULL STATION



- AREA OF RESCUE ASSISTANCE



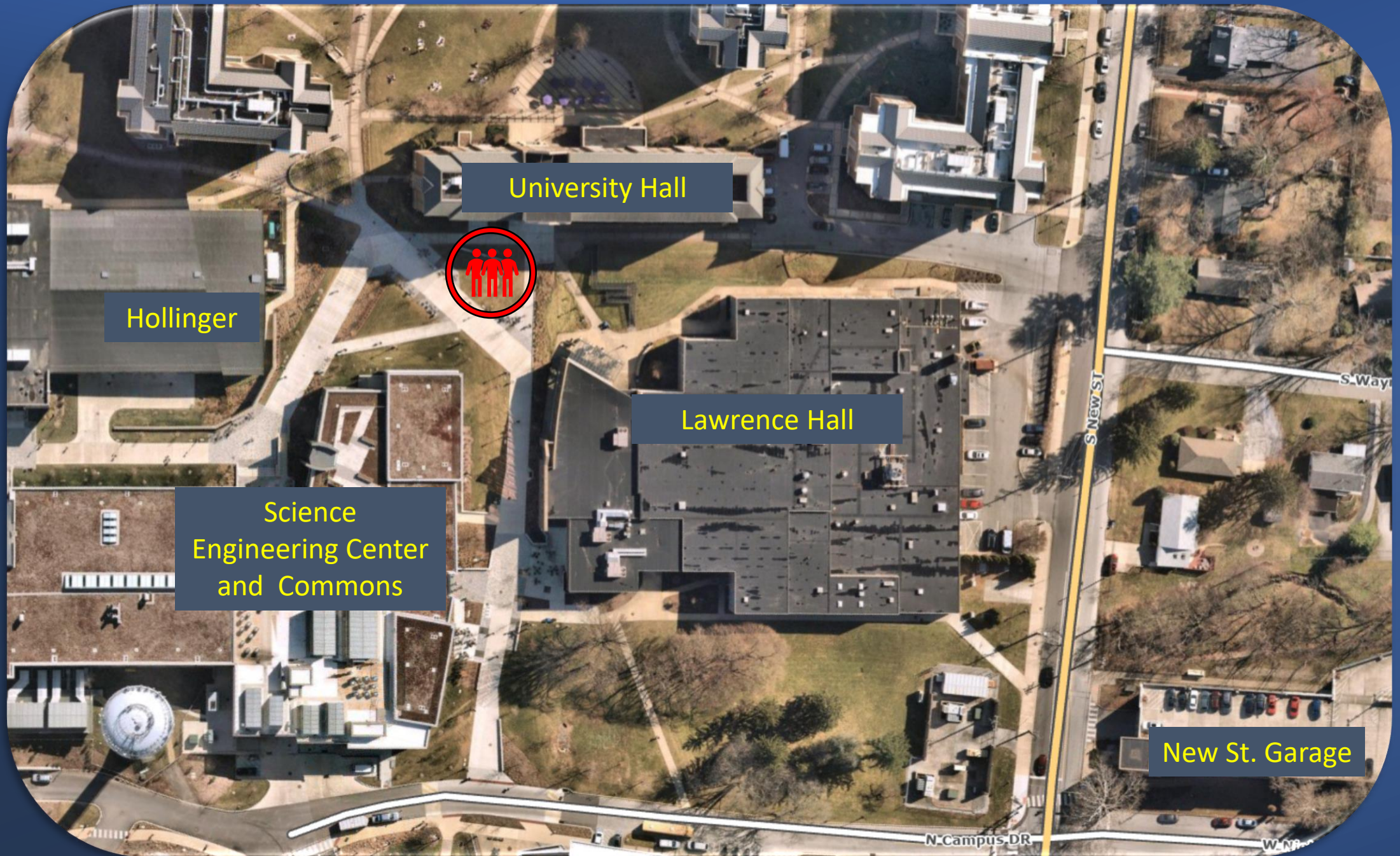
Designated Meeting Place

By the tables in front of University Hall & SECC

Do not gather in the parking lot or roads

Managers should take attendance of their employees

Faculty with classes should take attendance of their students



University Hall



Hollinger

Lawrence Hall

Science
Engineering Center
and Commons

New St. Garage

N Campus DR

W N

S New St

S Way

Reporting a Fire

If you discover smoke or flame, immediately initiate the following actions:

- Activate the fire alarm system by pulling a manual pull station or verbally notify the building's occupants of the fire if the alarm system is not functioning.
- Evacuate from the building and report to the Designated Meeting Location and await further instruction from a Public Safety representative.
- Even if the fire alarm system has already been activated, (at safe distance from the fire) contact the Public Safety Department at 610-436-3311 to report the fire.





If the building fire alarm activates:

- **All occupants** are required to **evacuate immediately** by using the closest available exit point. Evacuations should be conducted in a calm and orderly manner.
- When evacuating the building, only take essential belongings. This includes items such as keys, WCU ID, wallets, purses, **coats**, medications, etc.
- When evacuating the building, remember to turn off lights and close doors to rooms as you leave.

Evacuation by Fire Alarm

Building Fire Alarm



- While evacuating remind others to leave the building and ask if they need assistance. If you are unable to assist or they are unwilling to evacuate; continue evacuating yourself and notify Public Safety of their location.
- Proceed to the Designated Meeting Location and stay there
- Upon receiving an “ALL CLEAR” from Public Safety, staff will assist occupants with re-entry into the building

Evacuation by Fire Alarm

Building Fire Alarm

Anyone who needs assistance evacuating

- Occupants that cannot evacuate the building on their own should proceed to the closest **Area of Rescue Assistance or the landing of an enclosed stairway**
- After arriving at the **Area of Rescue Assistance or the landing of an enclosed stairway**, contact Public Safety at **(610) 436-3311** to advise them of your location
- If getting to the Area of Rescue Assistance is not possible, stay in your room with the door closed. Contact Public Safety at **(610) 436-3311** and let the dispatcher know your location
- Before an emergency, Environmental Health & Safety can help you identify egress routes, Areas of Rescue Assistance, and develop a personal evacuation plan. **(610) 436-3333**

Additional Fire Safety Information

- Please visit [Fire Safety page on WCUPA.EDU](https://wcupa.edu/fire-safety)
- If you have questions or concerns; Contact **Environmental Health & Safety at 610-436-3333**



*Environmental
Health & Safety*

