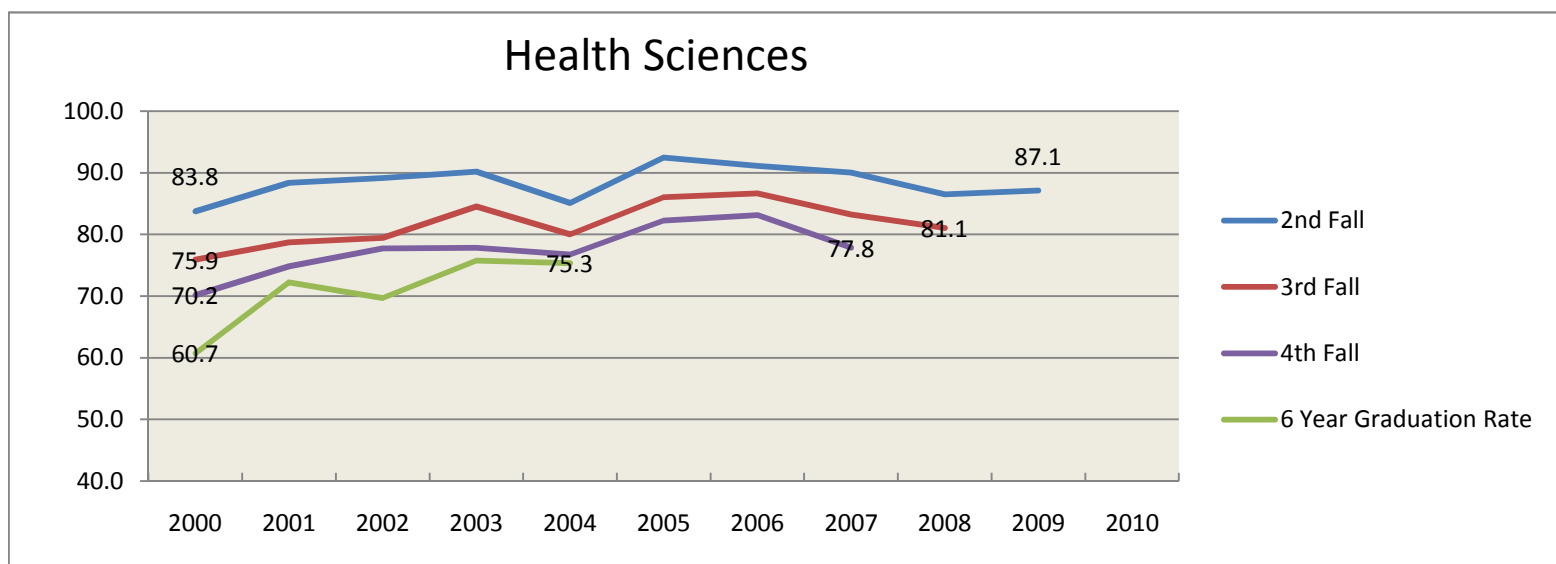
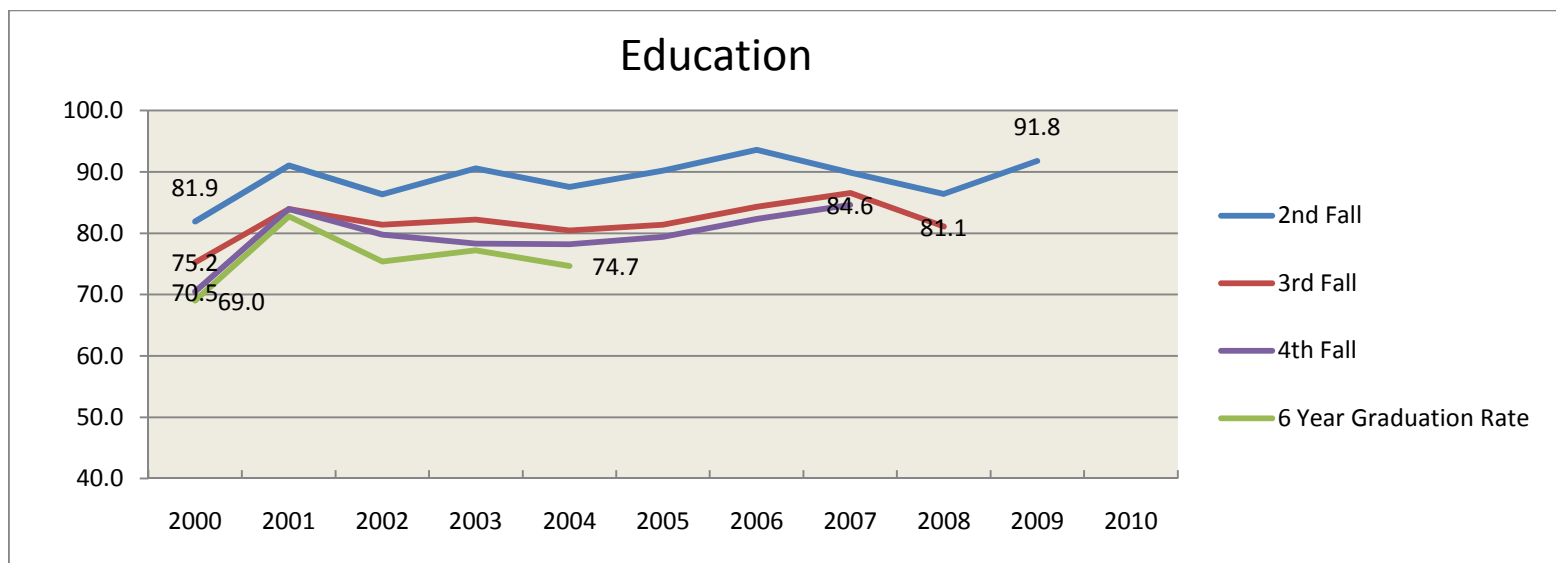
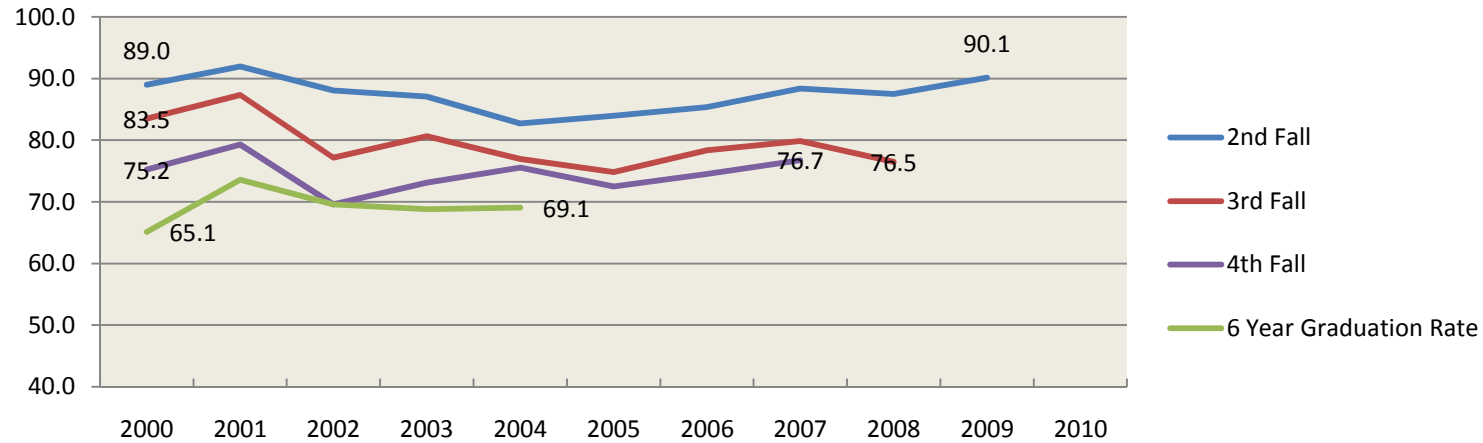


**Retention and Graduation Rates for First-time, Full Time, First Year Student Cohort--By College  
2000-2010**

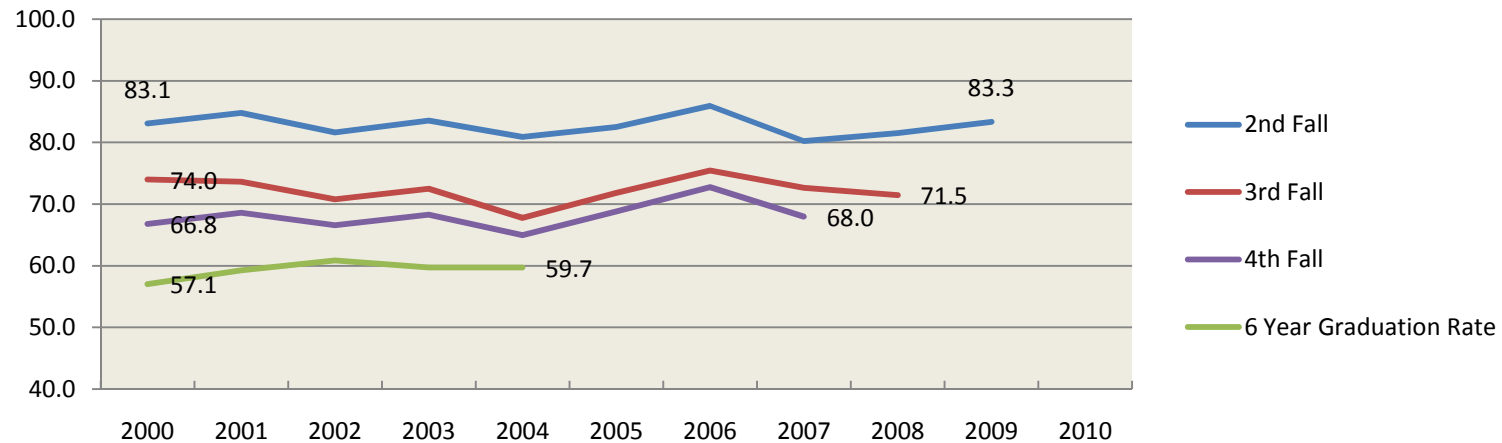


**Retention and Graduation Rates for First-time, Full Time, First Year Student Cohort--By College  
2000-2010**

### Visual and Performing Arts

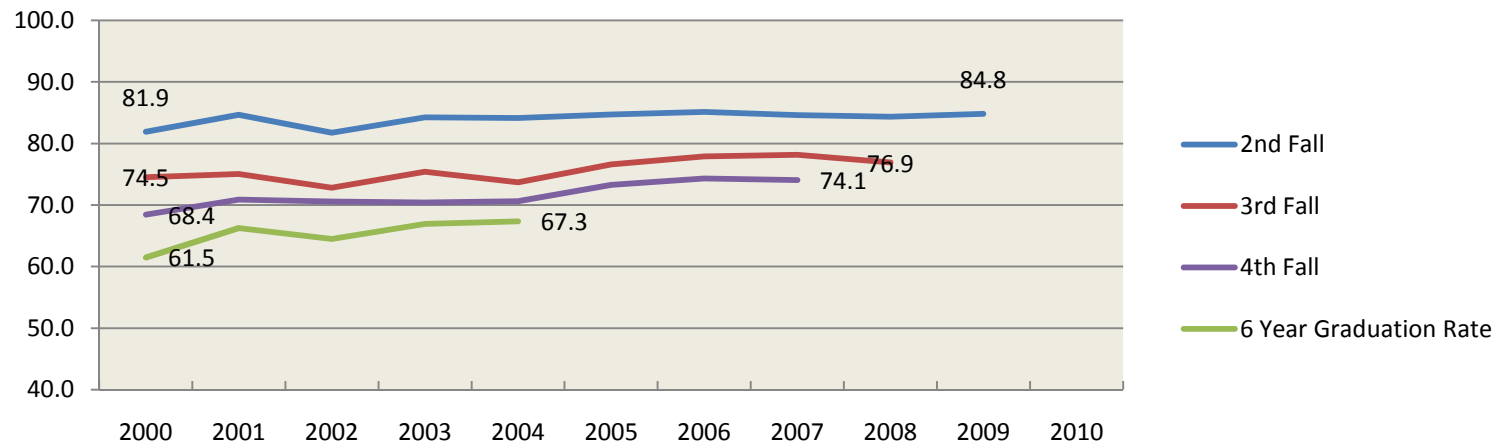


### Educational Services

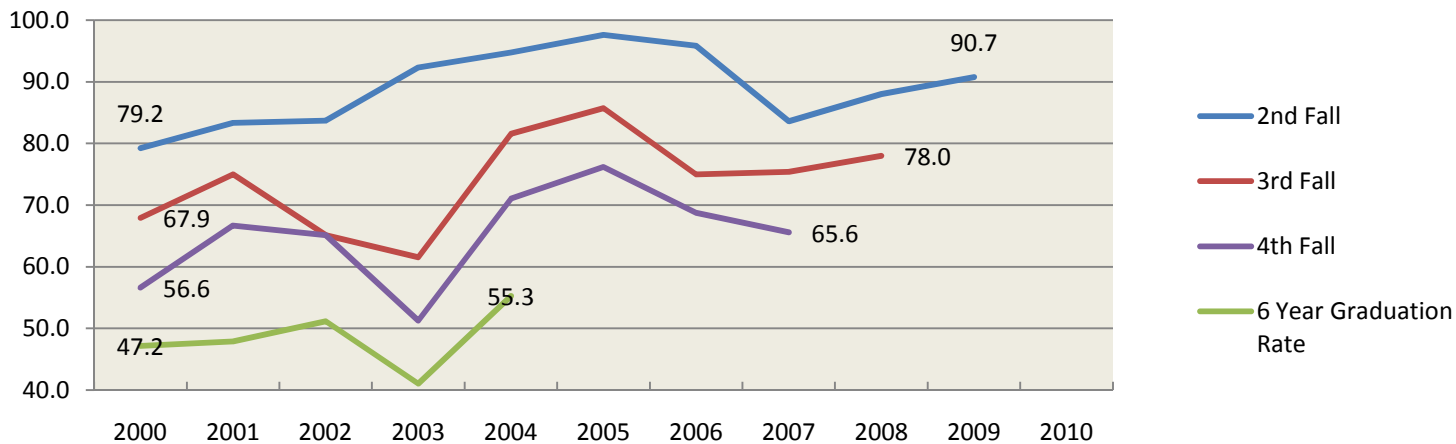


**Retention and Graduation Rates for First-time, Full Time, First Year Student Cohort--By College  
2000-2010**

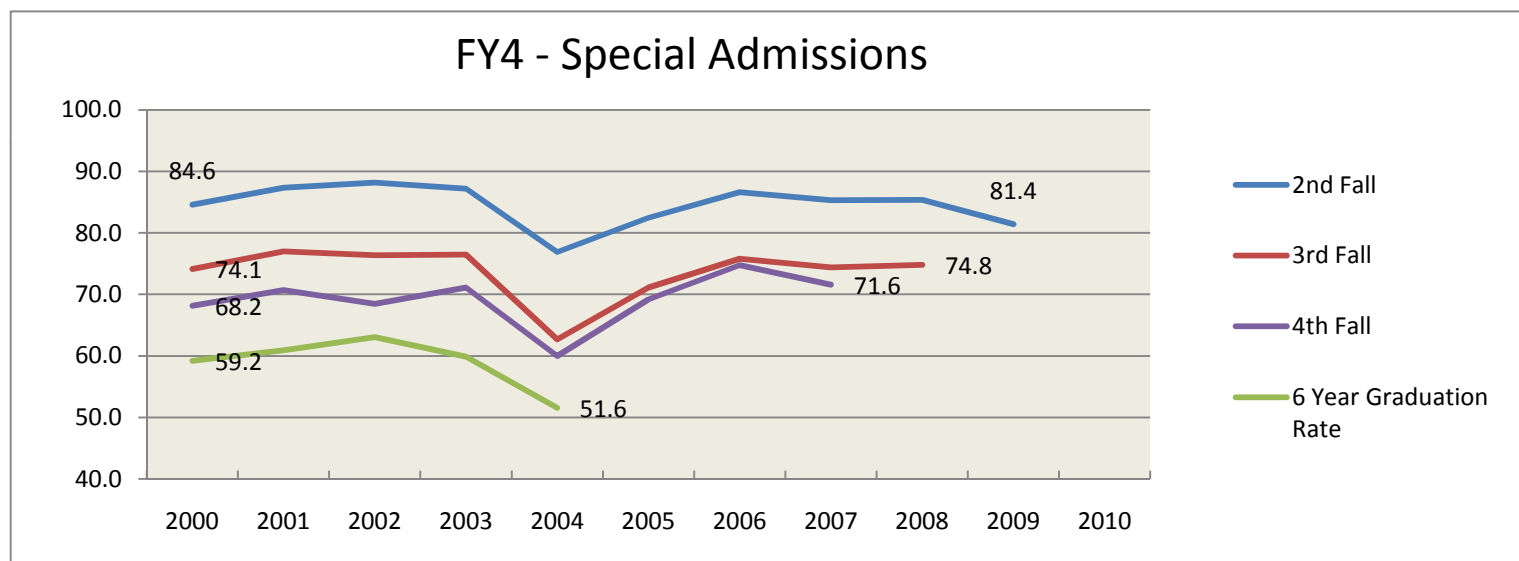
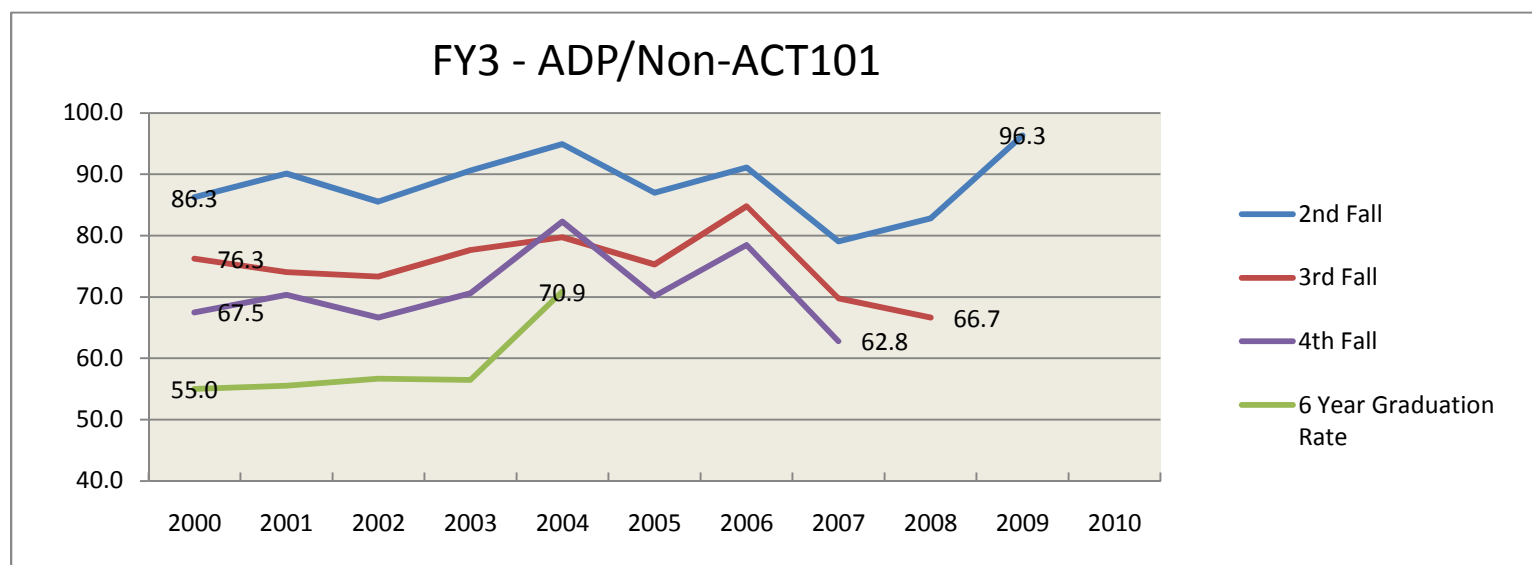
### FY1 - Regular Admission



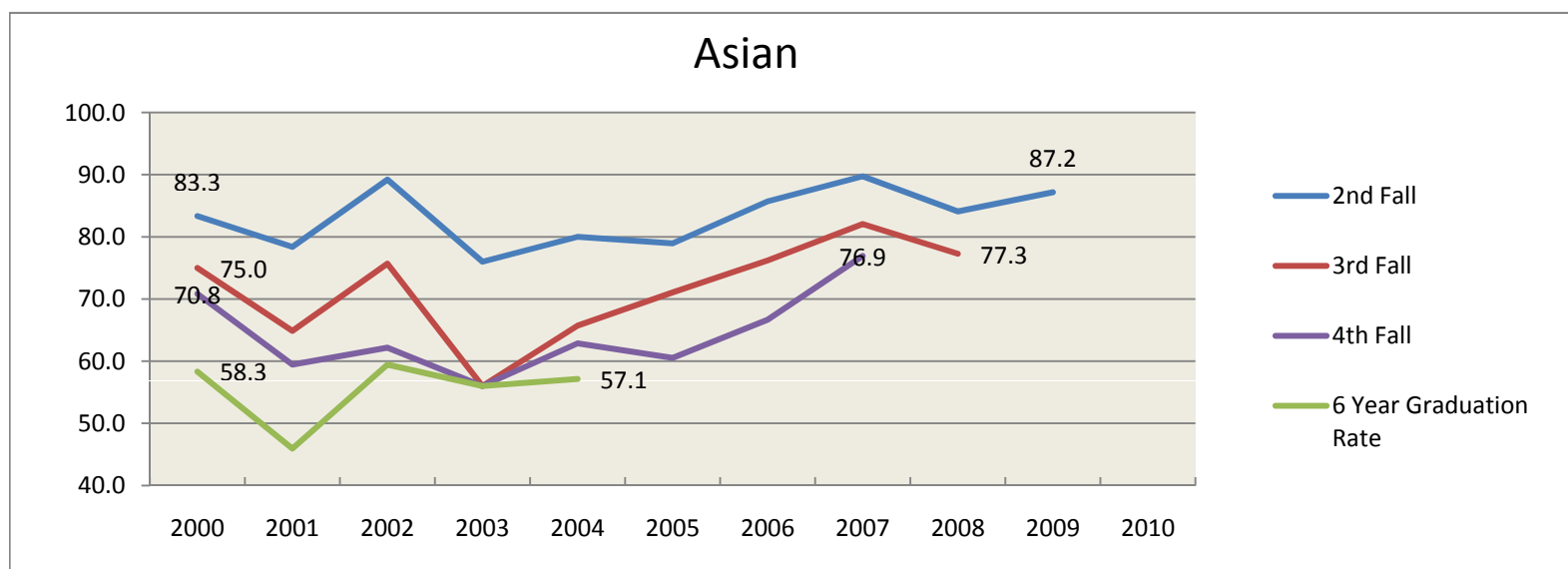
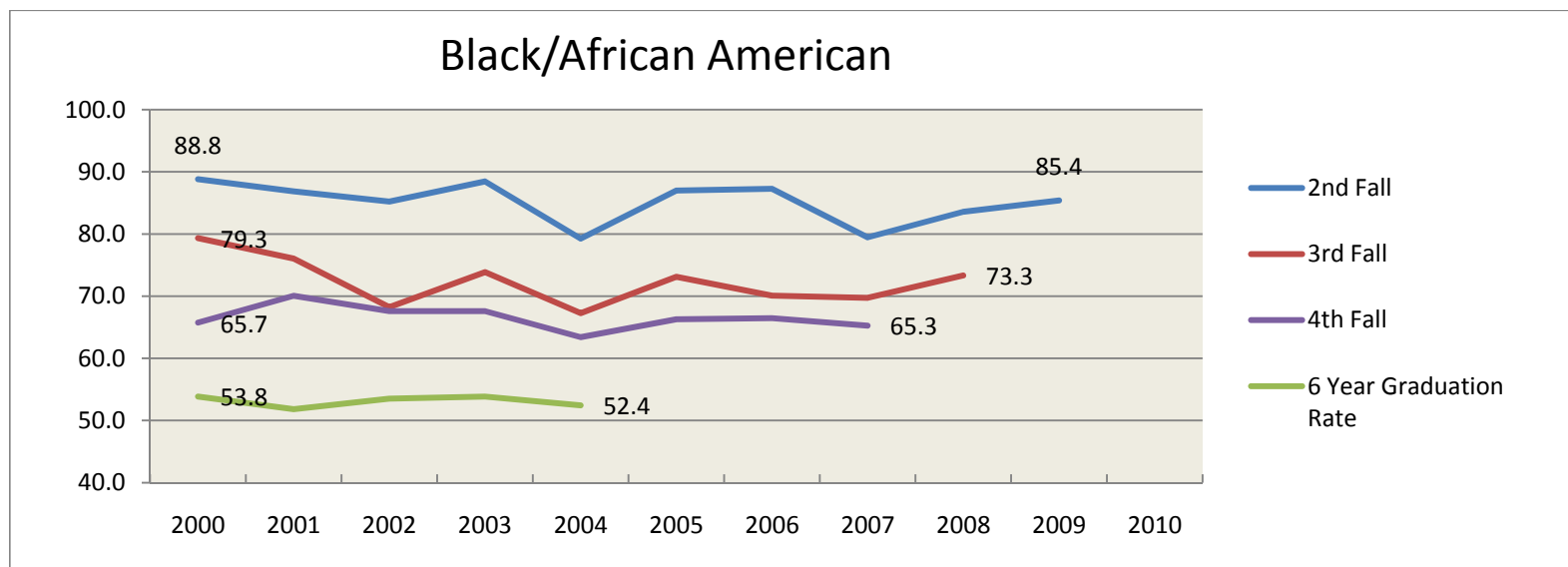
### FY2 - ADP/ACT101



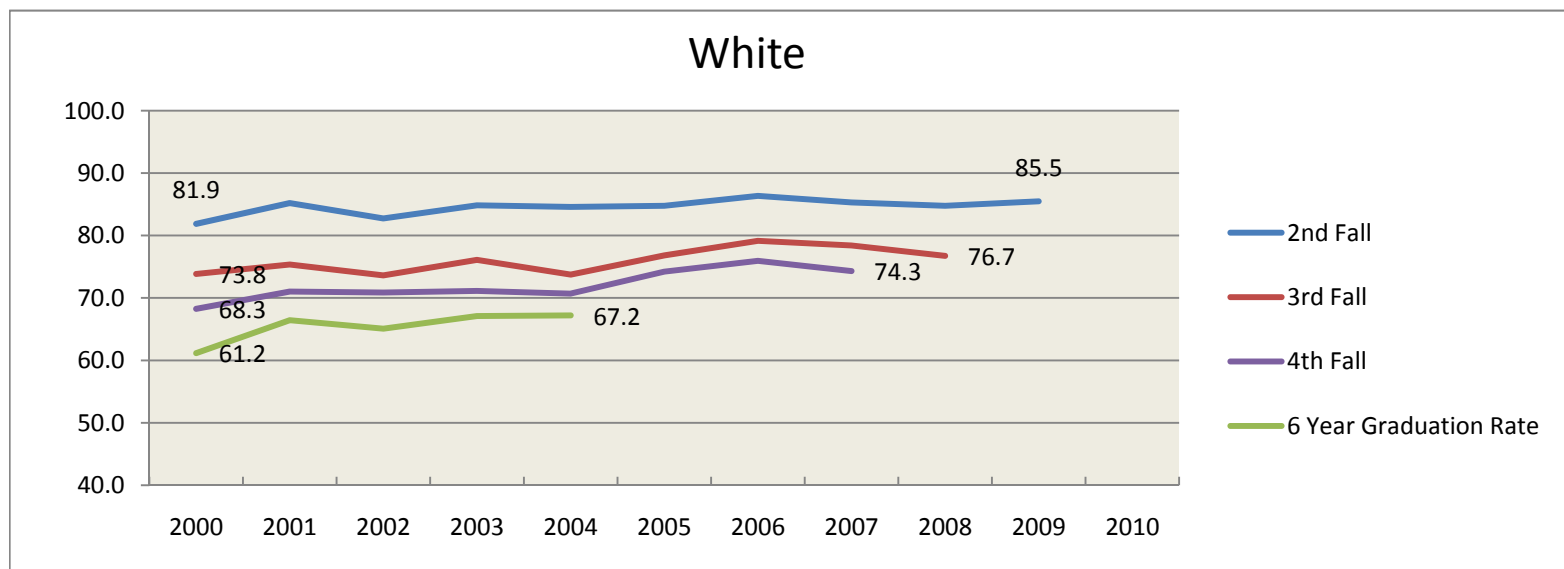
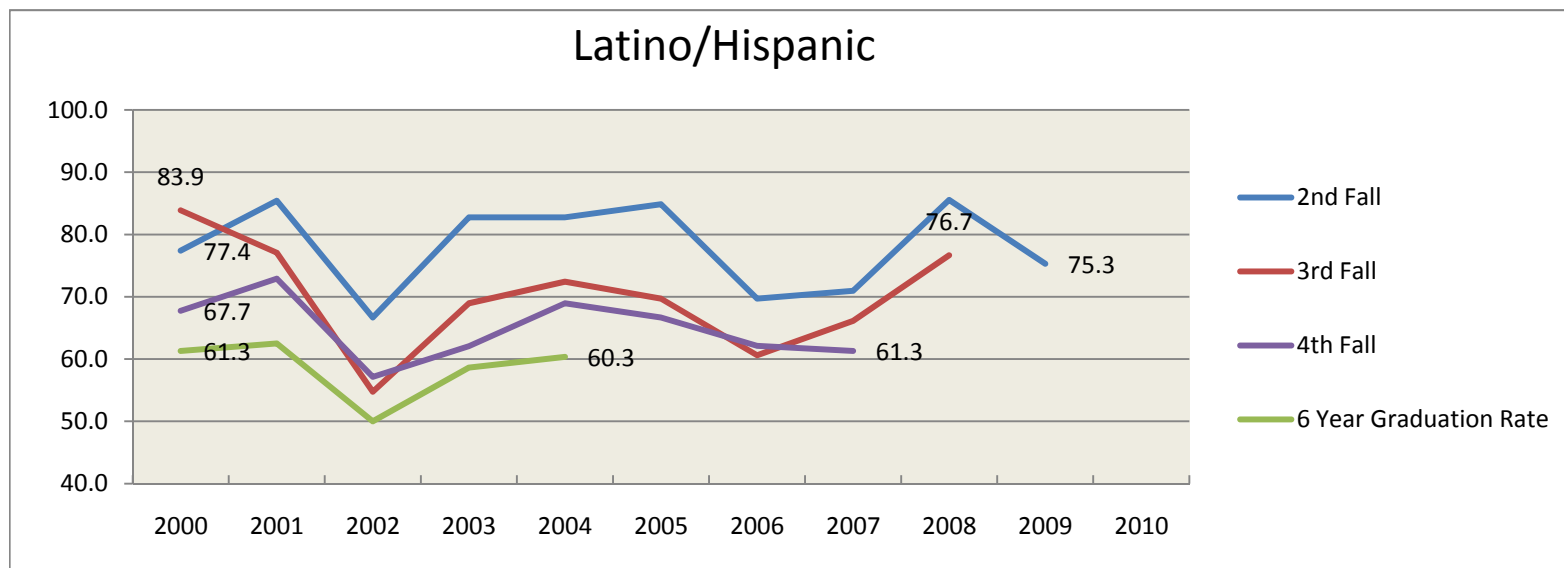
**Retention and Graduation Rates for First-time, Full Time, First Year Student Cohort--By Admission Type  
2000-2010**



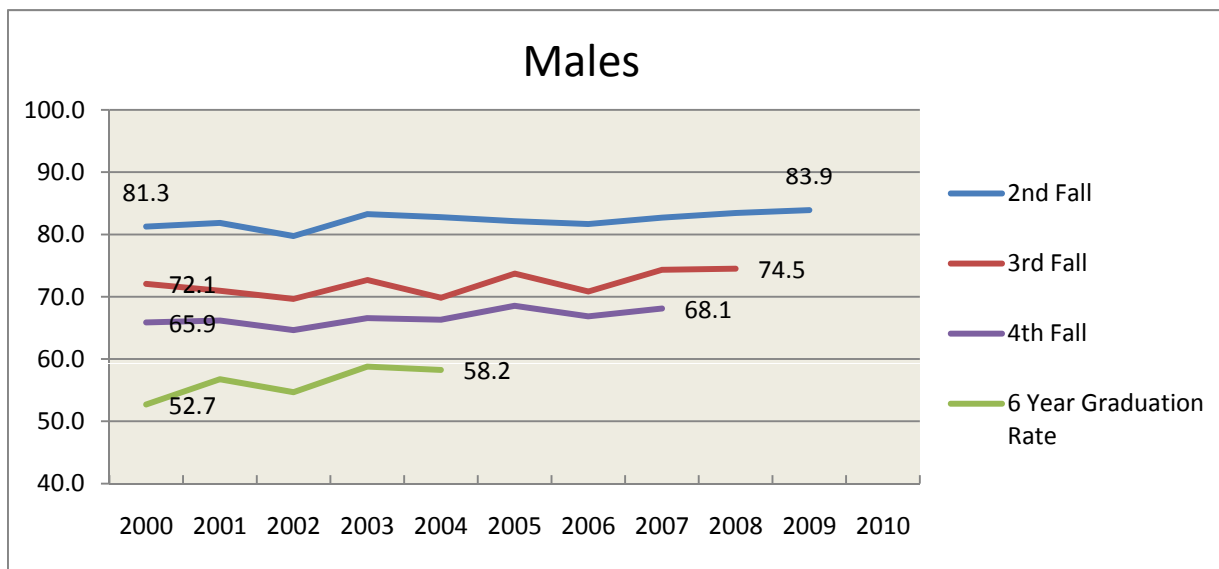
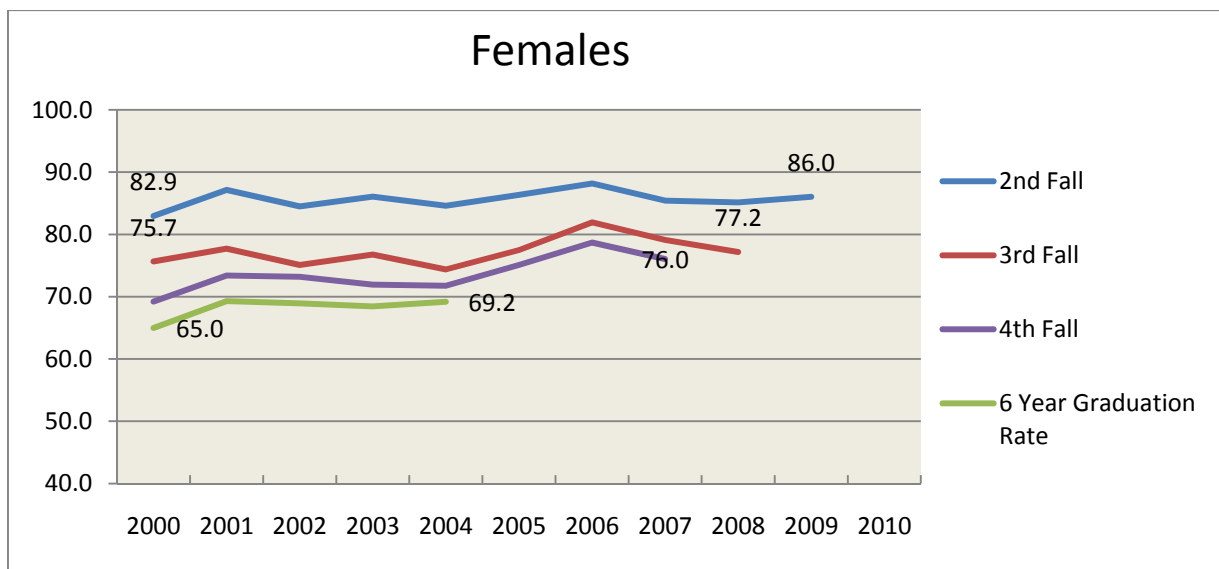
**Retention and Graduation Rates for First-time, Full Time, First Year Student Cohort--By Admission Type  
2000-2010**



**Retention and Graduation Rates for First-time, Full Time, First Year Student Cohort--By Student Ethnicity 2000-2010**

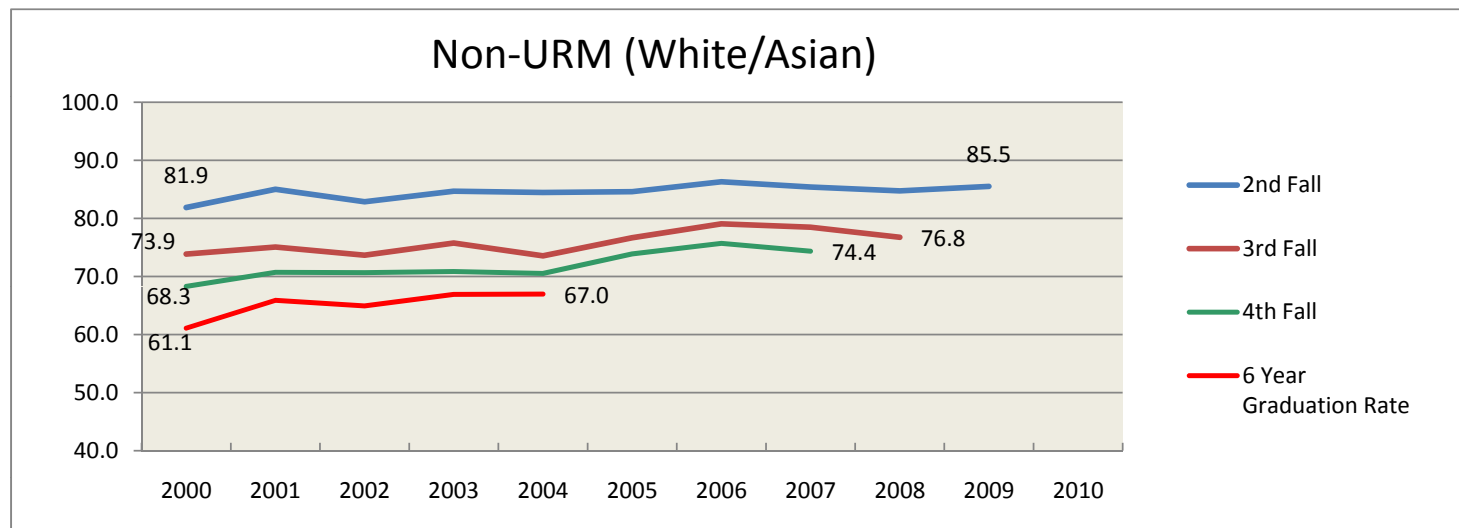
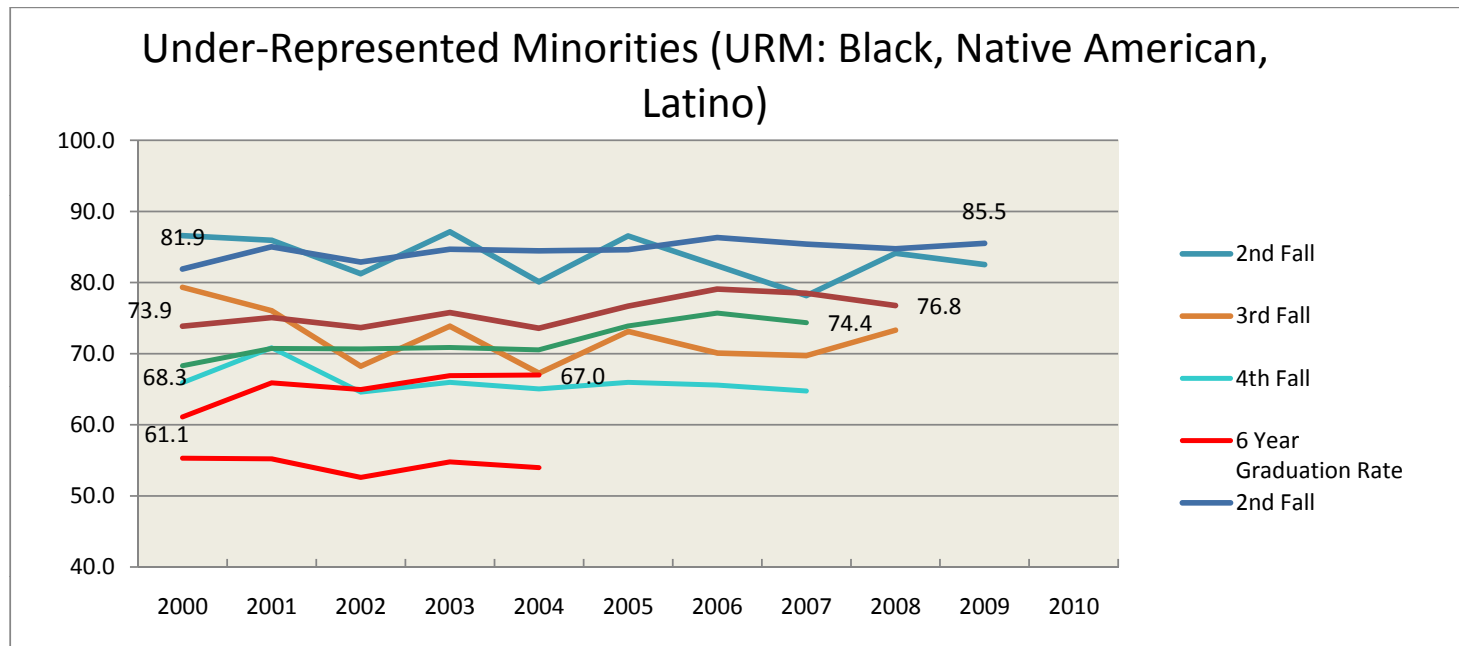


**Retention and Graduation Rates for First-time, Full Time, First Year Student Cohort--By Student Ethnicity 2000-2010**



**Retention and Retention and Graduation Rates for First-time, Full Time, First  
Year Student Cohort--By Gender  
2000-2010**





**Retention and Graduation Rates for First-time, Full Time, First Year Student Cohort--  
For Under-Represented Minorities  
and Non Under-Represented Minorities  
2000-2010**