

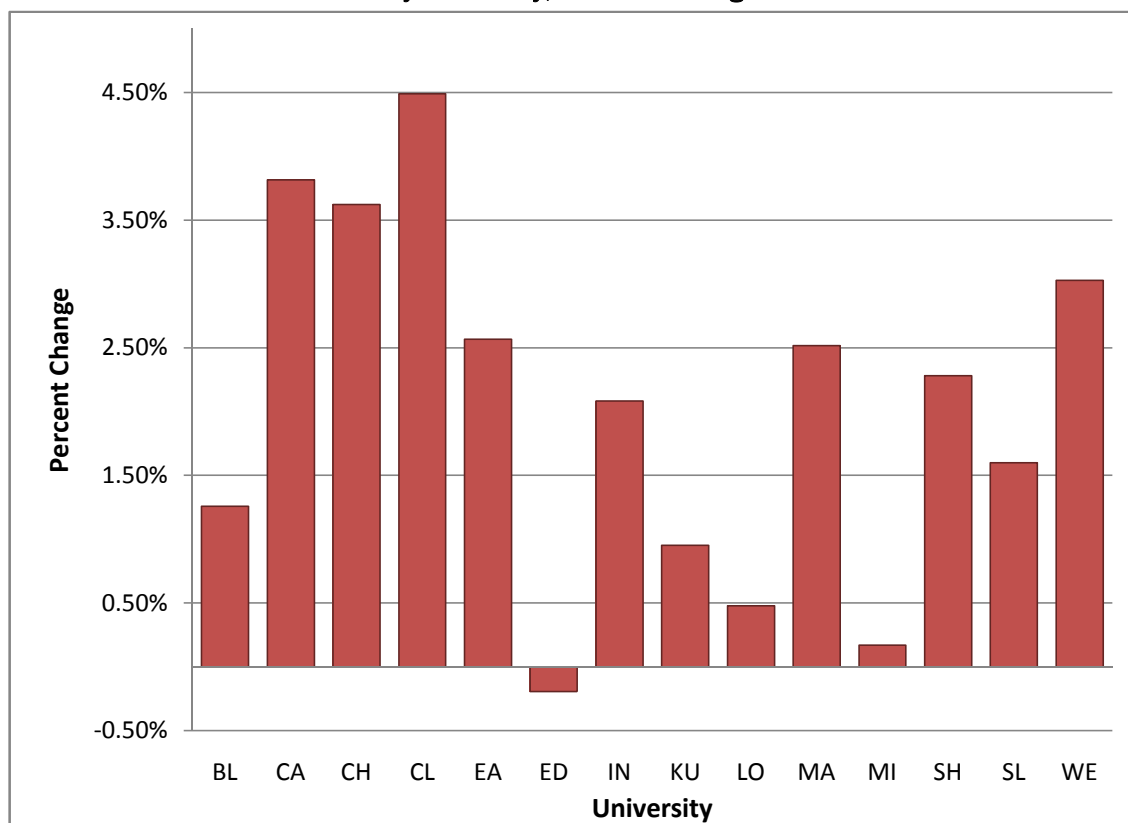
**Table 1**  
**Official Headcount Enrollment by University, Fall 2007 to Fall 2008**

University	2007	2008	Change 2007-08	Percent Change
Bloomsburg	8,745	8,855	110	1.26%
California	8,206	8,519	313	3.81%
Cheyney	1,436	1,488	52	3.62%
Clarion	6,795	7,100	305	4.49%
East Stroudsburg	7,053	7,234	181	2.57%
Edinboro	7,686	7,671	-15	-0.20%
Indiana	14,018	14,310	292	2.08%
Kutztown	10,295	10,393	98	0.95%
Lock Haven	5,241	5,266	25	0.48%
Mansfield	3,338	3,422	84	2.52%
Millersville	8,306	8,320	14	0.17%
Shippensburg	7,765	7,942	177	2.28%
Slippery Rock	8,325	8,458	133	1.60%
West Chester	13,219	13,619	400	3.03%
<b>System Total</b>	<b>110,428</b>	<b>112,597</b>	<b>2,169</b>	<b>1.96%</b>

Source: Data Warehouse, Student Data Submission

Official Reporting Date: End of the 15th day of classes

**Headcount Enrollment by University, Percent Change Fall 2007 to Fall 2008**



Source: Data Warehouse, Student Data Submission

Official Reporting Date: End of the 15th day of classes

**Table 2**  
**Headcount Enrollment by University by Race, Fall 2008**

University	Black	Native American	Asian	Hispanic	White	Non-Resident Alien	Multi-Racial and Unknown	Total	Total Minority*	Percent Minority*
Bloomsburg	553	15	90	233	7119	76	769	8,855	891	10.06%
California	474	19	42	100	6367	109	1408	8,519	635	7.45%
Cheyney	1,361	2	3	11	27	8	76	1,488	1,377	92.54%
Clarion	375	20	45	67	6459	67	67	7,100	507	7.14%
East Stroudsburg	346	23	102	366	5808	40	549	7,234	837	11.57%
Edinboro	621	23	72	107	6777	60	11	7,671	823	10.73%
Indiana	1,407	39	167	239	10730	668	1060	14,310	1,852	12.94%
Kutztown	612	27	121	414	8981	90	148	10,393	1,174	11.30%
Lock Haven	349	10	45	128	4561	110	63	5,266	532	10.10%
Mansfield	194	24	29	58	2826	42	249	3,422	305	8.91%
Millersville	528	10	117	278	6531	46	810	8,320	933	11.21%
Shippensburg	499	15	132	130	6581	36	549	7,942	776	9.77%
Slippery Rock	421	14	57	94	7187	91	594	8,458	586	6.93%
West Chester	1,140	36	285	375	11653	87	43	13,619	1,836	13.48%
<b>System Total</b>	<b>8,880</b>	<b>277</b>	<b>1,307</b>	<b>2,600</b>	<b>91,607</b>	<b>1,530</b>	<b>6,396</b>	<b>112,597</b>	<b>13,064</b>	<b>11.60%</b>
Percent of Total	7.89%	0.25%	1.16%	2.31%	81.36%	1.36%	5.68%	100.00%	11.60%	

\*Excludes Non-resident Alien, Multi-racial and Unknown students

Source: Data Warehouse, Student Data Submission

Official Reporting Date: End of the 15th day of classes

**Table 3**  
**Headcount Enrollment by University, Level and Status, Fall 2008**

University	Undergraduate	Graduate	Percent Undergraduate	Full-time	Part-time	Percent Full-time	Total
Bloomsburg	8,081	774	91.3%	7,852	1,003	88.7%	8,855
California	6,925	1,594	81.3%	7,039	1,480	82.6%	8,519
Cheyney	1,333	155	89.6%	1,273	215	85.6%	1,488
Clarion	5,975	1,125	84.2%	5,316	1,784	74.9%	7,100
East Stroudsburg	6,099	1,135	84.3%	5,948	1,286	82.2%	7,234
Edinboro	6,154	1,517	80.2%	5,875	1,796	76.6%	7,671
Indiana	11,928	2,382	83.4%	12,077	2,233	84.4%	14,310
Kutztown	9,404	989	90.5%	8,797	1,596	84.6%	10,393
Lock Haven	4,988	278	94.7%	4,715	551	89.5%	5,266
Mansfield	2,944	478	86.0%	2,760	662	80.7%	3,422
Millersville	7,217	1,103	86.7%	6,795	1,525	81.7%	8,320
Shippensburg	6,733	1,209	84.8%	6,662	1,280	83.9%	7,942
Slippery Rock	7,691	767	90.9%	7,525	933	89.0%	8,458
West Chester	11,482	2,137	84.3%	10,957	2,662	80.5%	13,619
<b>System Total</b>	<b>96,954</b>	<b>15,643</b>	<b>86.1%</b>	<b>93,591</b>	<b>19,006</b>	<b>83.1%</b>	<b>112,597</b>

Source: Data Warehouse, Student Data Submission

Official Reporting Date: End of the 15th day of classes

**Table 4**  
**Headcount Enrollment by University, Gender and Residency, Fall 2008**

University	Female	Male	Percent Female	Residents	Non-Residents	Percent Residents	Total
Bloomsburg	5,244	3,611	59.2%	7,943	912	89.7%	8,855
California	4,600	3,919	54.0%	7,402	1,117	86.9%	8,519
Cheyney	842	646	56.6%	1,128	360	75.8%	1,488
Clarion	4,541	2,559	64.0%	6,492	608	91.4%	7,100
East Stroudsburg	4,146	3,088	57.3%	5,550	1,684	76.7%	7,234
Edinboro	4,627	3,044	60.3%	6,797	874	88.6%	7,671
Indiana	7,960	6,350	55.6%	12,662	1,648	88.5%	14,310
Kutztown	6,205	4,188	59.7%	9,377	1,016	90.2%	10,393
Lock Haven	3,023	2,243	57.4%	4,700	566	89.3%	5,266
Mansfield	2,241	1,181	65.5%	2,606	816	76.2%	3,422
Millersville	4,881	3,439	58.7%	8,001	319	96.2%	8,320
Shippensburg	4,344	3,598	54.7%	7,501	441	94.4%	7,942
Slippery Rock	4,819	3,639	57.0%	7,648	810	90.4%	8,458
West Chester	8,528	5,091	62.6%	12,043	1,576	88.4%	13,619
<b>System Total</b>	<b>66,001</b>	<b>46,596</b>	<b>58.6%</b>	<b>99,850</b>	<b>12,747</b>	<b>88.7%</b>	<b>112,597</b>

Source: Data Warehouse, Student Data Submission

Official Reporting Date: End of the 15th day of classes

**Table 5**  
**Headcount Enrollment by University, Level and Residency, Fall 2008**

University	Undergraduate				Graduate			
	Resident	Non-Resident	Percent Non-Resident	Total	Resident	Non-Resident	Percent Non-Resident	Total
Bloomsburg	7,226	855	10.6%	8,081	717	57	7.4%	774
California	6,255	670	9.7%	6,925	1,147	447	28.0%	1,594
Cheyney	1,007	326	24.5%	1,333	121	34	21.9%	155
Clarion	5,689	286	4.8%	5,975	803	322	28.6%	1,125
East Stroudsburg	4,560	1,539	25.2%	6,099	990	145	12.8%	1,135
Edinboro	5,441	713	11.6%	6,154	1,356	161	10.6%	1,517
Indiana	11,099	829	7.0%	11,928	1,563	819	34.4%	2,382
Kutztown	8,423	981	10.4%	9,404	954	35	3.5%	989
Lock Haven	4,473	515	10.3%	4,988	227	51	18.3%	278
Mansfield	2,342	602	20.4%	2,944	264	214	44.8%	478
Millersville	6,918	299	4.1%	7,217	1,083	20	1.8%	1,103
Shippensburg	6,358	375	5.6%	6,733	1,143	66	5.5%	1,209
Slippery Rock	6,970	721	9.4%	7,691	678	89	11.6%	767
West Chester	10,125	1,357	11.8%	11,482	1,918	219	10.2%	2,137
<b>System Total</b>	<b>86,886</b>	<b>10,068</b>	<b>10.4%</b>	<b>96,954</b>	<b>12,964</b>	<b>2,679</b>	<b>17.1%</b>	<b>15,643</b>

Source: Data Warehouse, Student Data Submission

Official Reporting Date: End of the 15th day of classes

**Table 6**  
**Traditional and Non-Traditional Undergraduate Students, by University, Fall 2008**

University	Non-Traditional*		Traditional		Unknown Age**		Undergraduate Total
	Number	Percent	Number	Percent	Number	Percent	
Bloomsburg	493	6.10%	7,588	93.90%	0	0.00%	8,081
California	1,263	18.24%	5,659	81.72%	3	0.04%	6,925
Cheyney	114	8.55%	1,217	91.30%	2	0.15%	1,333
Clarion	858	14.36%	5,117	85.64%	0	0.00%	5,975
East Stroudsburg	549	9.00%	5,548	90.97%	2	0.03%	6,099
Edinboro	1,103	17.92%	5,051	82.08%	0	0.00%	6,154
Indiana	972	8.15%	10,948	91.78%	8	0.07%	11,928
Kutztown	806	8.57%	8,598	91.43%	0	0.00%	9,404
Lock Haven	441	8.84%	4,547	91.16%	0	0.00%	4,988
Mansfield	410	13.93%	2,534	86.07%	0	0.00%	2,944
Millersville	659	9.13%	6,558	90.87%	0	0.00%	7,217
Shippensburg	406	6.03%	6,327	93.97%	0	0.00%	6,733
Slippery Rock	740	9.62%	6,951	90.38%	0	0.00%	7,691
West Chester	1,172	10.21%	10,300	89.71%	10	0.09%	11,482
<b>System Total</b>	<b>9,986</b>	<b>10.30%</b>	<b>86,943</b>	<b>89.67%</b>	<b>25</b>	<b>0.03%</b>	<b>96,954</b>

\*Non-traditional students are defined as undergraduates who are 25 years of age or older as of freeze date. (9/15/2008)

\*\*The age of some students is unknown because they choose not to report their age.

Source: Data Warehouse, Student Data Submission

Official Reporting Date: End of the 15th day of classes

**Table 7**  
**New Undergraduate Transfers, Fall 2003 to Fall 2008**

	2003	2004	2005	2006	2007	2008	Five-Year Change	% of 2008 Total
<i>A. Community Colleges</i>								
Comm. College of Allegheny County	374	390	374	387	395	422	12.8%	6.3%
Comm. College of Beaver County	81	53	60	81	68	77	-4.9%	1.1%
Bucks County	126	146	145	131	134	161	27.8%	2.4%
Butler County	158	185	207	225	198	190	20.3%	2.8%
Pennsylvania Highlands	46	19	42	39	53	20	-56.5%	0.3%
Delaware County	274	270	311	299	303	335	22.3%	5.0%
Harrisburg Area	286	335	339	354	435	481	68.2%	7.2%
Lehigh Carbon	107	119	184	194	217	199	86.0%	3.0%
Luzerne County	116	106	138	135	144	131	12.9%	2.0%
Montgomery County	167	210	191	192	194	198	18.6%	2.9%
Northampton County	189	209	241	268	271	325	72.0%	4.8%
Comm. College of Philadelphia	72	82	72	60	65	81	12.5%	1.2%
Reading Area	118	68	93	93	119	110	-6.8%	1.6%
Westmoreland County	142	152	159	175	177	145	2.1%	2.2%
<b>Total Community Colleges</b>	<b>2,256</b>	<b>2,344</b>	<b>2,556</b>	<b>2,633</b>	<b>2,773</b>	<b>2,875</b>	<b>60.5%</b>	<b>42.8%</b>
<b>Community Colleges as % of Total</b>	<b>36.3%</b>	<b>38.2%</b>	<b>38.8%</b>	<b>40.3%</b>	<b>41.7%</b>	<b>42.8%</b>		
<i>B. Penn State</i>	510	462	436	337	361	372	-29.5%	5.5%
<i>C. Intra-system Transfers</i>	689	629	687	678	682	643	-5.6%	9.6%
<i>D. Other Colleges and Universities</i>	2,753	2,706	2,912	2,892	2,835	2,827	7.9%	42.1%
<b>Total New Undergraduate Transfers</b>	<b>6,208</b>	<b>6,141</b>	<b>6,591</b>	<b>6,540</b>	<b>6,651</b>	<b>6,717</b>	<b>8.2%</b>	<b>100.0%</b>

Source: Data Warehouse, Student Data Submission

Official Reporting Date: End of the 15th day of classes

**Table 8**  
**Student Living Arrangements, by University, Fall 2008**

University	On-campus university housing	Capacity-residence hall cap	On-campus university affiliated housing*	Off-campus university affiliated housing**	Other off-campus	Total	% On-campus	% of students living in either university housing or university affiliated housing
Bloomsburg	3,261	2,868	0	383	5,211	8,855	36.8%	41.2%
California	1,484	1,484	2	731	6,302	8,519	17.4%	26.0%
Cheyney	1,038	1,300	0	0	450	1,488	69.8%	69.8%
Clarion	1,420	1,378	0	662	5,018	7,100	20.0%	29.3%
East Stroudsburg	2,234	2,084	512	0	4,488	7,234	38.0%	38.0%
Edinboro	1,749	2,500	0	0	5,922	7,671	22.8%	22.8%
Indiana	2,644	3,856	1,470	0	10,196	14,310	28.7%	28.7%
Kutztown	3,217	2,879	0	1,116	6,060	10,393	31.0%	41.7%
Lock Haven	1,492	1,480	0	284	3,490	5,266	28.3%	33.7%
Mansfield	1,396	1,820	0	0	2,026	3,422	40.8%	40.8%
Millersville	2,278	2,420	0	0	6,042	8,320	27.4%	27.4%
Shippensburg	2,403	2,648	0	234	5,305	7,942	30.3%	33.2%
Slippery Rock	2,598	2,761	178	0	5,682	8,458	32.8%	32.8%
West Chester	3,527	3,535	1,359	0	8,733	13,619	35.9%	35.9%
<b>System Total</b>	<b>30,741</b>	<b>33,013</b>	<b>3,521</b>	<b>3,410</b>	<b>74,925</b>	<b>112,597</b>	<b>30.4%</b>	<b>33.5%</b>

\*On campus university affiliated housing includes any facility that houses students that is not owned by the university (but is on university owned land) where a partnership exists between the university and the building owner.

\*\*Off-campus university affiliated housing includes any facility that houses students that is not owned by the university but where a partnership exists between the university and the building owner.

Source: Data Warehouse, Student Data Submission

Official Reporting Date: End of the 15th day of classes



**Table 9**  
**Total Number of Majors\* by Field and University, Fall 2008, Ranked in Descending Order**

<b>Disciplinary Field (CIP)*</b>	<b>BL</b>	<b>CA</b>	<b>CH</b>	<b>CL</b>	<b>EA</b>	<b>ED</b>	<b>IN</b>	<b>KU</b>	<b>LO</b>	<b>MA</b>	<b>MI</b>	<b>SH</b>	<b>SL</b>	<b>WE</b>	<b>Total</b>
Education**	2,029	2,205	161	2,559	2,317	2,324	2,743	2,789	992	965	2,813	1,691	2,236	3,890	<b>29,714</b>
Business Management	1,470	891	232	884	882	481	2,651	1,677	500	222	831	1,310	890	1,395	<b>14,316</b>
Undeclared***	1,686	67	408	786	771	497	1,336	1,643	610	381	1,056	1,630	787	2,381	<b>14,039</b>
Health Professions	920	498	2	821	617	581	1,119	125	852	311	103	32	1,292	1,354	<b>8,627</b>
Psychology	292	279	106	228	317	354	675	690	227	141	509	414	289	562	<b>5,083</b>
Social Sciences****	322	187	177	155	385	209	1,588	317	136	90	381	317	361	375	<b>5,000</b>
Parks/Recreation	184	1,241	57	0	560	176	443	0	814	0	0	129	520	293	<b>4,417</b>
Visual/Perf Arts	130	254	42	146	118	697	486	634	98	169	177	116	388	401	<b>3,856</b>
Biological Sciences	376	214	80	255	476	160	323	256	78	143	510	339	256	369	<b>3,835</b>
Communications	195	167	61	374	175	167	684	222	141	122	402	305	251	0	<b>3,266</b>
English/Letters	293	106	23	92	87	81	528	531	74	187	175	187	148	654	<b>3,166</b>
Protective Services****	139	400	0	46	0	398	0	392	352	262	0	393	0	397	<b>2,779</b>
Liberal Arts/Studies	1	712	0	234	4	837	17	72	42	0	0	0	0	312	<b>2,231</b>
Physical Sciences	129	251	14	95	99	107	175	224	67	71	305	163	193	199	<b>2,092</b>
Public Admin	149	223	35	0	0	261	95	243	126	85	277	257	119	205	<b>2,075</b>
Computer/Info Science	253	137	28	136	122	99	203	176	54	63	154	247	172	132	<b>1,976</b>
History	111	83	0	53	139	92	158	172	48	63	131	193	114	282	<b>1,639</b>
Engineering Tech	0	283	0	81	0	28	318	0	0	0	271	0	242	0	<b>1,223</b>
Mathematics	58	15	12	29	29	34	50	56	9	17	67	38	110	142	<b>666</b>
Multi-Interdisc Studies	0	24	15	54	11	2	238	0	23	0	26	20	48	62	<b>523</b>
Family and Consumer Sciences	0	0	35	0	0	0	372	0	0	65	0	0	0	0	<b>472</b>
Foreign Languages	48	16	0	14	7	8	38	27	12	13	63	31	26	102	<b>405</b>
Environmental Science	0	70	0	25	0	60	0	61	0	0	0	130	0	0	<b>346</b>
Religion/Philosophy	23	8	0	9	12	12	44	28	11	15	15	0	16	100	<b>293</b>
Legal	0	188	0	24	0	0	0	0	0	0	0	0	0	0	<b>212</b>
Communication Tech	0	0	0	0	106	0	0	0	0	0	0	0	0	0	<b>106</b>
Library Science	0	0	0	0	0	0	0	55	0	37	0	0	0	0	<b>92</b>
Area Studies	0	0	0	0	0	6	7	3	0	0	45	0	0	12	<b>73</b>
Engineering	47	0	0	0	0	0	0	0	0	0	0	0	0	0	<b>47</b>
Architecture	0	0	0	0	0	0	19	0	0	0	0	0	0	0	<b>19</b>
Science Technology	0	0	0	0	0	0	0	0	0	0	9	0	0	0	<b>9</b>
<b>Totals</b>	<b>8,855</b>	<b>8,519</b>	<b>1,488</b>	<b>7,100</b>	<b>7,234</b>	<b>7,671</b>	<b>14,310</b>	<b>10,393</b>	<b>5,266</b>	<b>3,422</b>	<b>8,320</b>	<b>7,942</b>	<b>8,458</b>	<b>13,619</b>	<b>112,597</b>

\*Excludes second majors; \*\*Secondary Education majors are counted with other Education majors, not their home discipline \*\*\*Many entering students do not declare a major as freshmen \*\*\*\*Social Sciences includes Criminology; Criminal Justice is in Protective Services

Source: Data Warehouse, Student Data Submission

Official Reporting Date: End of the 15th day of classes