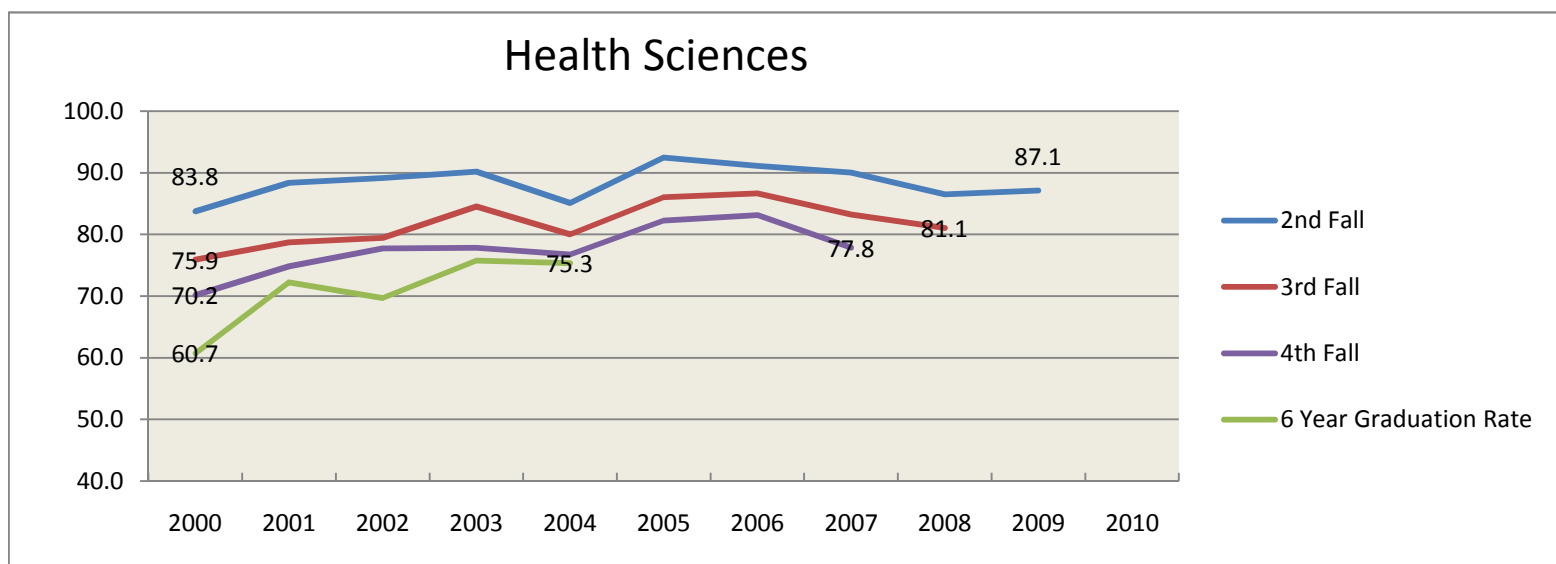
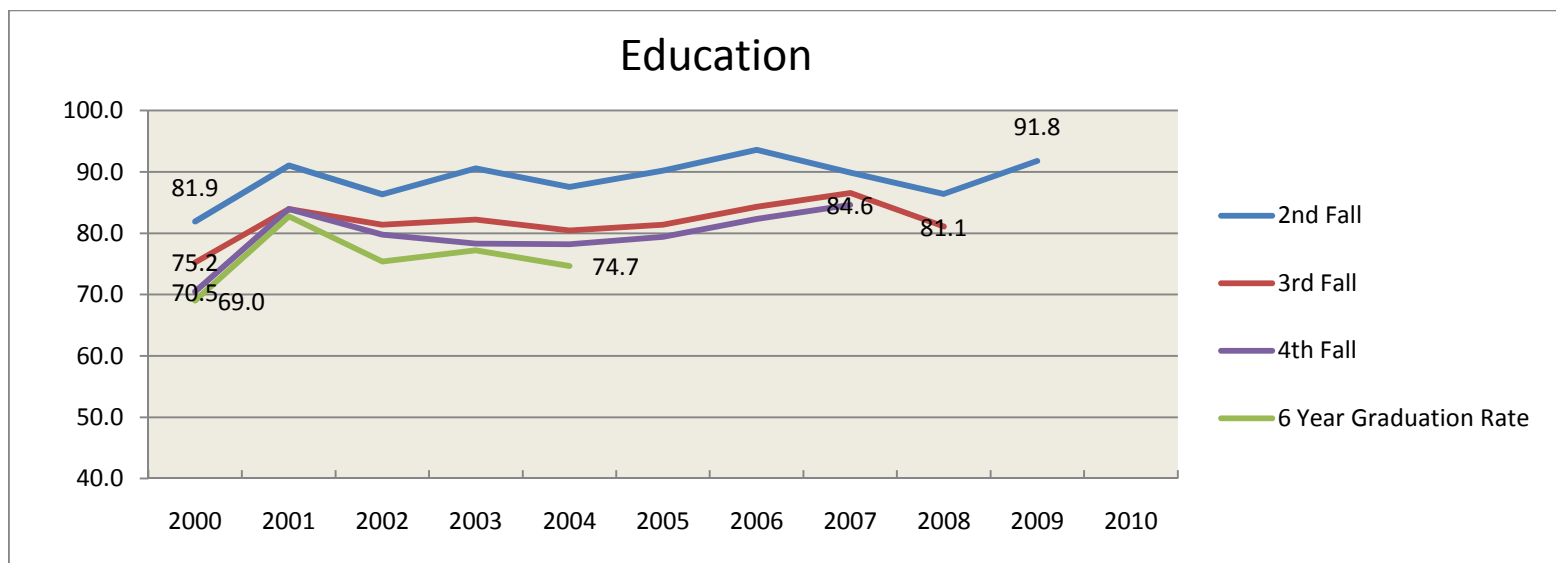
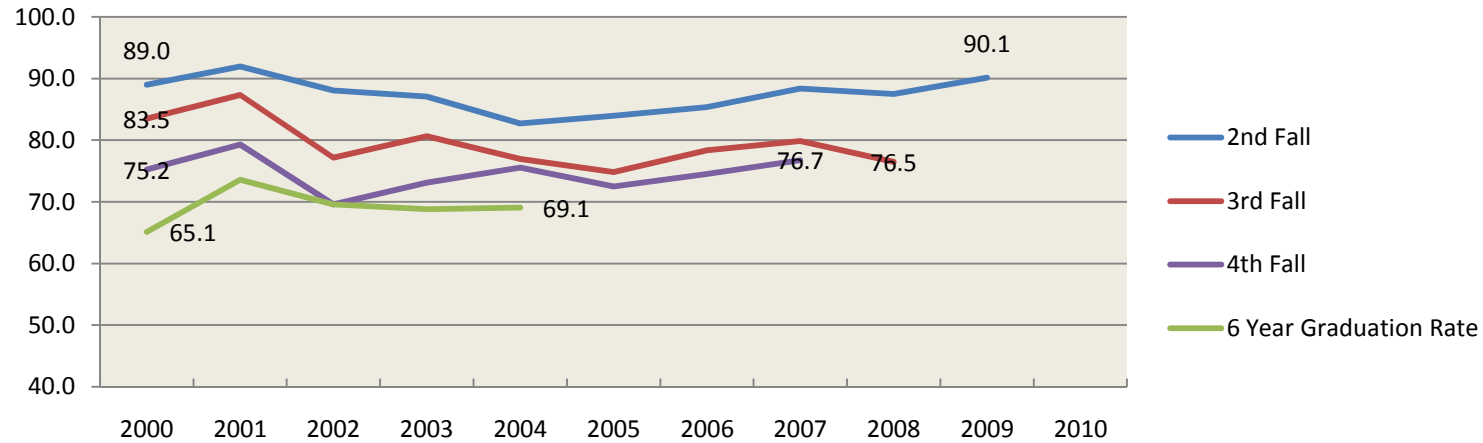


**Retention and Graduation Rates for First-time, Full Time, First Year Student Cohort--By College
2000-2010**

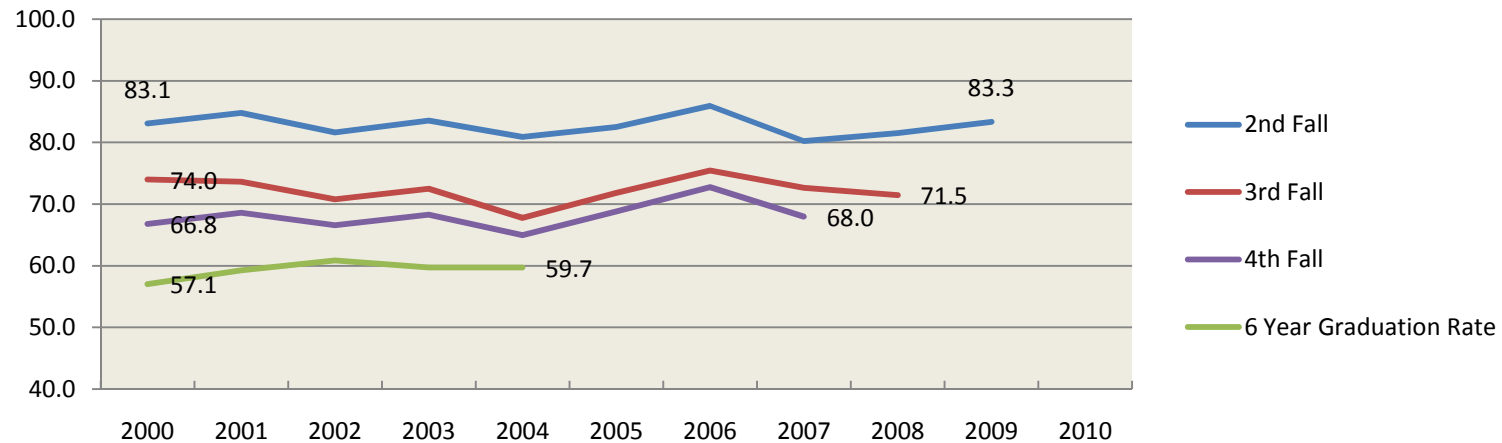


**Retention and Graduation Rates for First-time, Full Time, First Year Student Cohort--By College
2000-2010**

Visual and Performing Arts



Educational Services



**Retention and Graduation Rates for First-time, Full Time, First Year Student Cohort--By College
2000-2010**