

Fact Book 2012

West Chester University of Pennsylvania

**West Chester University of Pennsylvania
Office of Institutional Research**

**887 South Matlack Street
West Chester, PA 19383
Telephone (610) 436-2835
Fax (610) 436-2635**

Introduction & Acknowledgements

This Fact Book provides some of the most commonly requested information about West Chester University. Much of the information is drawn from the University's database and state mandated reports. Other offices and sources used are cited throughout the document. The cooperation of those offices and sources is much appreciated.

The Fact Book is divided into several chapters: Admissions, Enrollment, Retention/Graduation rates, Academic degree programs & accredited programs, Graduation/degree information, and Resources (including financial aid), services and facilities.

Comments and suggestions about additional information that might be included are much appreciated. Please forward your suggestions to ninamdar@wcupa.edu.

Additional institutional information is available on the World Wide Web: <http://www.wcupa.edu>.

Table of Contents

GENERAL INFORMATION	5
<i>About the University and Its Mission</i>	6
<i>West Chester University Organizational Chart</i>	9
ADMISSIONS	10
<i>Undergraduate Admissions Standards</i>	11
<i>Admission Application Statistics</i>	12&13
<i>First Time Full-Time Freshmen by Admission Type</i>	12
<i>SAT Score Distribution: Fall 2012</i>	14 & 15
<i>SAT Average Scores</i>	Error! Bookmark not defined.
<i>Feeder High Schools: Fall 2012</i>	16
<i>Feeder Colleges: Fall 2011</i>	17
<i>First Time Freshmen Enrollment by County</i>	18
<i>First Time Freshmen Enrollment by State</i>	19
<i>Admission Yield Statistics: Fall 2012</i>	20
<i>First-Time Freshmen Admission Yield</i>	20&21
<i>First-Time Transfer Admission Yield</i>	22 & 23
ENROLLMENT	24
<i>Head Count Enrollment by Race/Ethnicity and Gender</i>	25
<i>Head Count Enrollment by Degree Status and College Fall 2012</i>	25
<i>Head Count Enrollment by State: Fall 2009 to 2012</i>	26&27

Table of Contents (continued)

<i>Enrollment by Pennsylvania County of Residence: Fall 2012</i> -----	28
<i>Head Count Enrollment by Ethnicity and Gender Fall 2008 to Fall 2012</i> -----	29
<i>Head Count Enrollment by College : Fall 2008 to Fall 2012</i> -----	30&31
<i>Head Count Enrollment by Student Level: Fall 2007 to 2012</i> -----	32&33
<i>Credit Hours and Student FTE Enrollment</i> -----	34&35
RETENTION AND GRADUATION -----	36
<i>Retention & Graduation Rates for First-Time, Full-Time Freshmen: University sum</i> -----	37
<i>Second-Year Retention Rates for First-Time, Full-Time Freshmen by Race/Ethnicity and by Gender</i> -----	38
<i>Four and Six-Year Graduation Rates by Race/Ethnicity and by Gender</i> -----	39
ACADEMIC AND DEGREE PROGRAMS -----	40
<i>Undergraduate Degrees and Majors</i> -----	41&42
<i>Graduate Degrees and Majors</i> -----	43&44
<i>Professional and Program Accreditations</i> -----	45-48
DEGREES CONFERRED -----	49
<i>Undergraduate and Graduate Degrees conferred by College and Academic Plan</i> -----	49-65
REOURCES, SERVICES & FACILITIES -----	66-68

Quick Facts

West Chester University
West Chester, PA 19383
Telephone 610/436-1000
<http://www.wcupa.edu/>

Founded	1871
President	Dr. Greg R. Weisenstein
University Accreditation	Middle States Commission on Higher Education (MSCHE)
Fall 2012 Enrollment	15,415
Undergraduate	13,301
Graduate	2,114
Fall 2012 Credit Hours	
Undergraduate	376,150.5
Graduate	35,025
Undergraduate Degree Programs	114
Undergraduate Certificate/Teaching Certificate	31
Undergraduate Non-Degree	12
Graduate Degree Programs	82
Graduate Certificate, Teaching Certificate, Professional growth	101
Graduate Non-Degree	7
Degrees Awarded in 2011-2012	
Bachelors	2,860
Masters	645
Library Collections	2,633,924



GENERAL INFORMATION

About the University and Its Mission

The West Chester University Mission Statement

West Chester University, a member of the Pennsylvania State System of Higher Education, is a public, regional, comprehensive institution committed to providing access and offering high-quality undergraduate education, select post-baccalaureate and graduate programs, and a variety of educational and cultural resources for its students, alumni, and citizens of southeastern Pennsylvania.

The West Chester University Values Statement

West Chester University is committed to attracting, enrolling, and graduating quality students from a wide variety of educational, cultural, and economic backgrounds. This endeavor requires the University to attract and retain highly qualified faculty and staff and to provide each member of the University community with learning and leadership development opportunities. To this end, the University supports and encourages programs which benefit all people and which seek to eradicate discrimination and injustice. We treasure what we believe to be the highest principles of American society: the worth and uniqueness of each individual, the belief that success is to be earned by individual effort put forth in an environment founded on equality of opportunity, and the appreciation of the ideal of an inclusive society.

We believe that it is incumbent upon all members of our community—staff, students, faculty and administrators—to conduct themselves with civility toward one another at all times. We value the special talents and contributions of each member of our community. We further affirm the worth and dignity of each member and the shared responsibility of all to treat each other as individuals, with respect and courtesy.

As a university owned by the citizens of Pennsylvania, we value our mission to provide the best educational opportunities possible which will enable the University community to successfully address the concerns of a global society. To this end, West Chester

University seeks to provide diligent advising for students and to focus on teaching students to think clearly and critically, to make logical and ethical judgments, and to communicate effectively with others.

West Chester University's community strongly supports the principles of academic integrity and academic responsibility, viewing both as the province of every member of the campus community. We hold the highest esteem for teaching directed toward student learning and affirm that mastery of content as well as mastery of teaching skills necessary to communicate such content is paramount.

This values statement is intended to be a living document which will serve West Chester University as it changes and evolves in the coming years.

About West Chester University of Pennsylvania

West Chester University offers bachelors and masters degrees in the arts and sciences, teacher training and certification, advanced study preparation in fields such as medicine and law, education for specific professions, and continuing education.

Total enrollment at West Chester University includes approximately 13,301 undergraduate students and 2,114 graduate students. While most undergraduates are recent high school graduates preparing for career objectives, many others are older individuals, including veterans and homemakers, who either never before had the opportunity for a college education or whose schooling was interrupted.

Most students are residents of Pennsylvania but students from other states and foreign countries are welcome. The student body at West Chester University represents a cross section of many ethnic, racial, and religious groups and includes students from all socioeconomic levels.

Like the world around it, West Chester University is constantly transforming. The school continues to broaden and modify the nature and number of its programs to reflect the needs of its students in their endeavor to prepare themselves for success and fulfillment in life.

The History of West Chester University of Pennsylvania

Founded in 1871, West Chester University began as West Chester Academy, a private, state-aided school that existed from 1812 to 1869. The academy enjoyed strong support from the highly intellectual Chester County Cabinet of the Natural Sciences of the pre-Civil War decades. It was recognized as one of Pennsylvania's leading preparatory schools, and its experience in teacher training laid the groundwork for the normal school years that were to follow.

As the state began to take increasing responsibility for public education, the academy was transformed into West Chester Normal School, still privately owned but state certified. The normal school admitted its first class, consisting of 160 students, on September 25, 1871. In 1913, West Chester became the first of the normal schools to be owned outright by the Commonwealth.

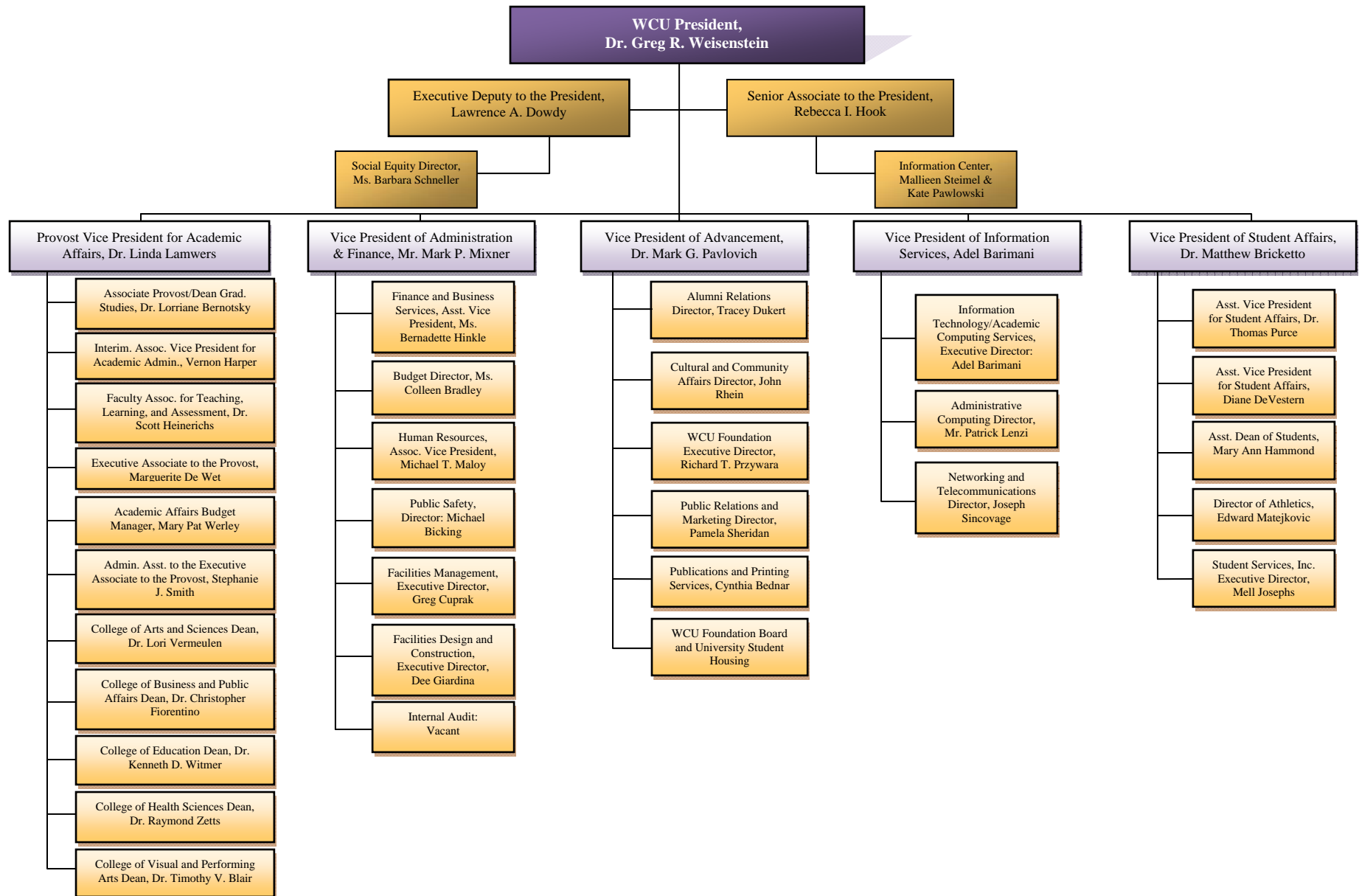
West Chester became West Chester State Teachers College in 1927 when Pennsylvania initiated a four-year program of teacher education. In 1960, as the Commonwealth paved the way for liberal arts programs in its college system, West Chester was renamed West Chester State College, and two years later introduced the liberal arts program that turned the one-time academy into a comprehensive college.

In recognition of the historic merit of the campus, in 1981 the West Chester State College Quadrangle Historic District was placed on the National Register of Historic Places. The buildings included in this historic district are Philips Memorial Building, Ruby Jones Hall, Recitation Hall, and the Old Library. Except for Philips, these buildings are all constructed of native Chester County serpentine stone.

West Chester State achieved another major milestone with passage of the State System of Higher Education bill. West Chester became one of the 14 universities in the State System of Higher Education on July 1, 1983. Along with its new name -- West Chester University of Pennsylvania of the State System of Higher Education -- the institution acquired a new system of governance and the opportunity to expand its degree programs.

<http://www.wcupa.edu/>

Organizational Chart



ADMISSIONS

Undergraduate Admissions Standards

West Chester University prides itself on the holistic approach used in evaluating applicant credentials. Each application is reviewed individually, and we carefully consider scholastic performance and academic preparation to determine an individual's potential for success.

For regular admission as a first-year student we recommend successful completion of a college preparatory curriculum in high school, honors and AP classes are a plus, rank in class in the 50th percentile or better, a grade point average of 3.00+, and a minimum combined SAT score of 1020 or better (prefer a minimum of 500 in both verbal and math). It is important to realize that these factors are guidelines for consideration. The academic profile of the regular admits who enroll at West Chester University is a mean SAT combined score of 1077, a rank in the top third of their class or 69% percentile, and a grade point average of 3.47.

Applicants who do not meet regular admissions standards may be considered for a special admissions program if appropriate or denied admission and counseled to enroll at another college or university for a minimum of 24-30 credits before reapplying as a transfer student.

Transfer applicants must have a minimum grade point average of 2.00 for admissions consideration. The majority of our transfers have a Cumulative GPA of 2.50 or better prior to transferring to the University. Some of our academic programs require a higher grade point average and specific course prerequisites. Pennsylvania Community College students who have earned an Associate of Arts or Associate of Science degree and students who have completed 12 or more transferable credits from a State System University with a 2.00 or above have an Academic Passport that provides entry into any university in the State System of Higher Education. For more information on admissions requirements and the Academic Passport, please contact the Office Admissions at (610) 436-3411 or e-mail ugadmiss@wcupa.edu

Admission Application Statistics for First Time, Full Time, First Year Students - Fall 2012

	Fall 2011			Fall 2012			Total	
	Male	Female	Total	Male	Female	Total	Change	% Change
African American								
Applied	661	1,100	1,761	626	1,051	1,677	-84	-4.8
Accepted	178	350	528	191	331	522	-6	-1.1
Enrolled	76	117	193	80	131	211	18	9.3
Asian								
Applied	162	211	373	157	232	389	16	4.3
Accepted	60	104	164	64	100	164	0	0
Enrolled	16	13	29	19	28	47	18	62.1
Caucasian								
Applied	4,517	7,215	11,732	4,189	6,883	11,072	-660	-5.6
Accepted	2,178	3,510	5,688	2,115	3,740	5,855	167	2.9
Enrolled	717	1,127	1,844	695	1,186	1,881	37	2.0
Hawaiian/Pacific Islander								
Applied	2	3	5	4	8	12	7	140.0
Accepted	0	1	1	1	3	4	3	300.0
Enrolled	0	1	1	0	2	2	1	100.0
Hispanic								
Applied	304	467	771	292	478	770	-1	-0.1
Accepted	167	256	423	166	255	421	-2	0.5
Enrolled	68	96	164	56	80	136	-28	-17.1
Native American								
Applied	3	11	14	4	6	10	-4	-28.6
Accepted	1	5	6	2	1	3	-3	-50.0
Enrolled	0	1	1	0	0	0	-1	-100.0
NRA								
Applied	26	23	49	26	26	52	3	0.06
Accepted	11	7	18	5	13	18	0	0
Enrolled	2	3	5	1	2	3	-2	-0.4

	Fall 2011			Fall 2012			Total	
	Male	Female	Total	Male	Female	Total	Change	%Change
Multiracial								
Applied	134	238	372	123	243	366	-6	-0.01
Accepted	74	110	184	61	112	173	-11	-0.06
Enrolled	30	25	55	18	28	46	-9	-0.16
Not Supplied								
Applied	2	1	3	4	4	8	5	1.6
Accepted	0	1	1	1	0	1	0	0.0
Enrolled	0	0	0	0	0	0	0	0.0
Total								
Applied	5,811	9,269	15,080	5,425	8,931	14,356	-728	-4.8
Accepted	2,669	4,344	7,013	2,606	4,555	7,161	148	2.1
Enrolled	909	1,388	2,283	869	1,457	2,326	34	1.9

First Time, Full Time, First Year Students by Admission Type

Admittance Type	2008		2009		2010		2011		2012	
	N	%	N	%	N	%	N	%	N	%
Regular	1,564	83.0	1,847	82.4	1,713	83.1	1,893	82.9	1935	83.2
ADP ACT 101	48	2.5	54	2.4	57	2.8	55	2.4	51	2.2
ADP Non-ACT 101	79	4.2	109	4.9	101	4.9	104	4.6	103	4.4
Special Admission	194	10.3	231	10.3	191	9.3	231	10.1	237	10.2
Total	1,885		2,241		2,062		2,283		2,326	

SAT Score Distribution: First Time, Full Time, First Year Students Fall 2012

SAT- Critical Reading Distribution

Score	2008		2009		2010		2011		2012	
	N	%	N	%	N	%	N	%	N	%
700 - 800	27	1.4	26	1.5	61	3	37	1.6	28	1.2
600 - 699	255	12.8	287	13	484	23.5	392	17.2	396	17.0
500 - 599	1,062	53.3	1,207	52.6	1,163	56.4	1,249	54.7	1,260	54.2
400 - 499	587	29.5	654	29.7	328	15.9	547	24.0	585	25.2
300 - 399	59	3.0	67	3	25	1.2	57	2.5	57	2.5
200 - 299	1	0.1	0	0	0	0	1	0	0	0
No Scores	2	0.1	0	0	1	0	0	0	0	0
Total	1,993		2,241		2,062		2,283		2,326	

SAT- Mathematics Distribution

Score	2008		2009		2010		2011		2012	
	N	%	N	%	N	%	N	%	N	%
700 - 800	26	1.3	26	1.2	38	3.1	27	1.2	33	1.4
600 - 699	350	17.6	532	17.6	450	18.2	443	19.4	478	20.6
500 - 599	1,109	55.6	1,223	54.6	1,135	55.1	1,330	58.3	1,348	58.0
400 - 499	453	22.7	394	23.6	375	21.8	427	18.7	428	18.4
300 - 399	53	2.7	66	2.9	63	1.8	56	2.5	39	1.7
200 - 299	0	0.0	0	0	0	0	0	0	0	0
No Scores	2	0.1	0	0	1	0	0	0	0	0
Total	1,993		2,241		2,062		2,283		2,326	

SAT – Writing Distribution

Score	2009		2010		2011		2012	
	N	%	N	%	N	%	N	%
700-800	20	0.9	29	1.4	30	1.3	18	.1
600-699	308	13.7	315	15.3	331	14.8	335	14.4
500-599	1,196	53.4	1,046	50.7	1,166	52.1	1,222	52.5
400-499	617	27.5	564	27.4	642	28.7	633	27.2
300-399	70	3.1	69	3.3	69	3.1	69	3.0
200-299	1	0.0	2	0.1	0	0.0	0	0
No Scores	29	1.3	37	1.8	0	0.0	49	2.1
Total	2,241		2,062		2,283		2,326	

SAT Average Scores

	Critical Reading			Mathematics			Writing			Combined*		
	WCU	PA	US	WCU	PA	US	WCU	PA	US	WCU	PA	US
Fall 2003	528	500	507	530	502	519				1,058	1,002	1,026
Fall 2004	529	501	508	532	502	518				1,061	1,003	1,026
Fall 2005	532	501	508	535	503	520				1,067	1,004	1,028
Fall 2006	527	493	503	535	500	518				1,062	993	1,028
Fall 2007	525	493	502	533	499	515				1,059	992	1,017
Fall 2008	523	494	502	535	501	515	521	483	494	1,059	995	1,017
Fall 2009	523	493	501	535	501	515	524	483	493	1,059	994	1,016
Fall 2010	544	492	501	533	501	516	528	480	492	1,078	993	1,017
Fall 2011	535	493	497	542	501	514	528	479	489	1,078	994	1,011
Fall 2012	532	491	496	545	501	514	516	480	488	1,077	992	1,010

*Combined Critical Reading and Mathematics scores

Feeder High Schools: Fall 2012

Top Pennsylvania High Schools of Entering First Year Students

<i>School</i>	<i>Count</i>
DOWNINGTOWN HIGH SCHOOL – EAST	34
AVON GROVE HIGH SCHOOL	30
CARDINAL O’HARA HIGH SCHOOL	30
B REED HENDERSON HIGH SCHOOL	28
GARNET VALLEY HIGH SCHOOL	26
SPRING-FORD SENIOR HIGH SCHOOL	26
CENTRAL BUCKS HIGH SCHOOL – SOUTH	25
COUNCIL ROCK SOUTH	25
NESHAMINY HIGH SCHOOL	24
UNIONVILLE HIGH SCHOOL	24
COUNCIL ROCK HIGH SCHOOL NORTH	23
METHACTON HIGH SCHOOL	23
PARKLAND HIGH SCHOOL	23
ARCHBISHOP CARROLL HIGH SCHOOL	22
WEST CHESTER BAYARD RUSTIN HS	22
BISHOP SHANAHAN HIGH SCHOOL	22
DOWNINGTOWN HIGH SCHOOL – WEST	21
EAST SENIOR HIGH SCHOOL	21
NORTH PENN HIGH SCHOOL	21
CENTRAL BUCKS HIGH SCHOOL EAST	20
CONESTOGA HIGH SCHOOL	19
HATBORO-HORSHAM SENIOR HIGH SCHOOL	19
MNS. BONNER & ARC. PRENDERGAST	19
CENTRAL BUCKS HIGH SCHOOL WEST	18
GREAT VALLEY HIGH SCHOOL	18
PENNCREST HIGH SCHOOL	18
HEMPFIELD HIGH SCHOOL	17
PENNSBURY HIGH SCHOOL EAST CAMPUS	17
PLYMOUTH-WHITEMARSH HIGH SCHOOL	17
SOUDERTON AREA HIGH SCHOOL	17
SPRINGFIELD HIGH SCHOOL	17
WILLIAM TENNENT HIGH SCHOOL	17
CENTRAL DAUPHIN HIGH SCHOOL	16

<i>School</i>	<i>Count</i>
MARPLE NEWTOWN HIGH SCHOOL	16
PERKIOMEN VALLEY HIGH SCHOOL	16
STROUDSBURG HIGH SCHOOL	16
UPPER DARBY HIGH SCHOOL	16
BOYERTOWN AREA SENIOR HIGH SCHOOL	15
OXFORD AREA HIGH SCHOOL	15
CENTRAL HIGH SCHOOL	14
HAVERFORD TOWNSHIP SENIOR HS	14
NORRISTOWN AREA HIGH SCHOOL	14
CHEROKEE HIGH SCHOOL	13
EXETER TOWNSHIP SR HIGH SCHOOL	13
FREEHOLD TOWNSHIP HIGH SCHOOL	13
UPPER MERION AREA HIGH SCHOOL	13
ABINGTON HIGH SCHOOL	12
COATESVILLE AREA SR HIGH SCHOOL	12
OWEN J ROBERTS HIGH SCHOOL	12
SUN VALLEY HIGH SCHOOL	12
CENTRAL YORK HIGH SCHOOL	11
CUMBERLAND VALLEY HIGH SCHOOL	11
MARLBORO HIGH SCHOOL	11
POTTSGROVE HIGH SCHOOL	11
SALESIANUM SCHOOL	11
ABINGTON HEIGHTS HIGH SCHOOL	10
FATHER JUDGE HIGH SCHOOL	10
FREEDOM HIGH SCHOOL	10
LIBERTY HIGH SCHOOL	10
MAINLAND REGIONAL HIGH SCHOOL	10
MANHEIM TOWNSHIP HIGH SCHOOL	10
NAZARETH AREA HIGH SCHOOL	10
POPE JOHN PAUL II	10
STRATH HAVEN HIGH SCHOOL	10
TWIN VALLEY HIGH SCHOOL	10
WHITEHALL HIGH SCHOOL	10

Feeder Colleges: Fall 2012

Top Institutions Previously Attended by New Fall Undergraduate Transfer Students
[Excludes students who transitioned from non-degree to degree (T7) as well as Transfers with first degree at WCU(T8)]

Name	Count	Percent of Total	Type	State
Delaware County Community College	356	36.6	2 Year Public	PA
Montgomery County Community College	158	16.3	2 Year Public	PA
Bucks County Community College	88	9.1	2 Year Public	PA
Pennsylvania St Univ. University Park	44	4.5	4 Year Public	PA
Harrisburg Area Community College	36	3.7	2 Year Public	PA
Kutztown University	32	3.3	4 Year Public	PA
Temple University	30	3.1	4 Year Public	PA
Community College of Philadelphia	27	2.8	2 Year Public	PA
Indiana University of Pennsylvania	20	2.1	4 Year Public	PA
All Military	19	2.0	4 Year Public	
Bloomsburg University	18	1.9	4 Year Public	PA
Millersville University	16	1.6	4 Year Public	PA
Northampton County Area Community College	15	1.5	2 Year Public	PA
Shippensburg University	14	1.4	4 Year Public	PA
West Chester University	12	1.2	4 Year Public	PA
Drexel University	11	1.1	4 Year Public	PA
West Virginia University, Morgantown	11	1.1	4 Year Public	WV
Neumann College	10	1.0	4 Year Private	PA
Reading Area Community College	9	0.9	2 Year Public	PA
Camden County Community College	8	0.8	2 Year Public	NJ
Lehigh Carbon Community College	8	0.8	2 Year Public	PA
York College of Pennsylvania	8	0.8	4 Year Private	PA
Immaculata University	7	0.7	4 Year Private	PA
Widener University	7	0.7	4 Year Private	PA
University of North Dakota, Grand Forks	7	0	4 Year Public	ND

First Time, First Year Student Enrollment by County for Pennsylvania Residents: Fall 2012 (Top 10 Counties with Most Enrollments Ranked)

County	Total	Percent	Rank
Adams	16	.7	
Allegheny	7	.3	
Armstrong			
Beaver			
Bedford	1	.04	
Berks	83	3.6	6
Blair	3	.1	
Bradford			
Bucks	234	10.1	4
Butler			
Cambria			
Cameron			
Carbon	4	.2	
Centre			
Chester	319	13.7	1
Clarion	1	.04	
Clearfield	1	.04	
Clinton			
Columbia	2	.1	
Crawford			
Cumberland	44	1.9	
Dauphin	42	1.8	
Delaware	265	11.4	3
Elk			
Erie	1	.04	
Fayette			
Franklin	7	.3	
Fulton			
Huntingdon	1	.04	
Indiana			
Jefferson			
Juniata			
Lackawanna	48	2.1	
Lancaster	76	3.3	7

County	Total	Percent	Rank
Lawrence			
Lebanon	6	.3	
Lehigh	68	2.9	9
Luzerne	25	1.1	
Lycoming	10	.4	
McKean	1	.04	
Mercer			
Mifflin			
Monroe	31	1.3	
Montgomery	283	12.2	2
Montour	1	.04	
Northampton	59	2.5	10
Northumberland	5	.2	
Perry			
Philadelphia	165	7.1	5
Pike	11	.5	
Potter			
Schuylkill	9	.4	
Snyder	1	.04	
Somerset			
Sullivan			
Susquehanna	7	.3	
Tioga			
Union	1	.04	
Venango			
Warren			
Washington	1	.04	
Wayne	5	.2	
Westmoreland	2	.1	
Wyoming	3	.1	
York	70	3.0	8
Out of State	404	17.3	
Missing			
Total	2,326	100	

First Time, First Year Student Enrollment by State: Fall 2012 (Top 10 States with Most Enrollments Ranked)

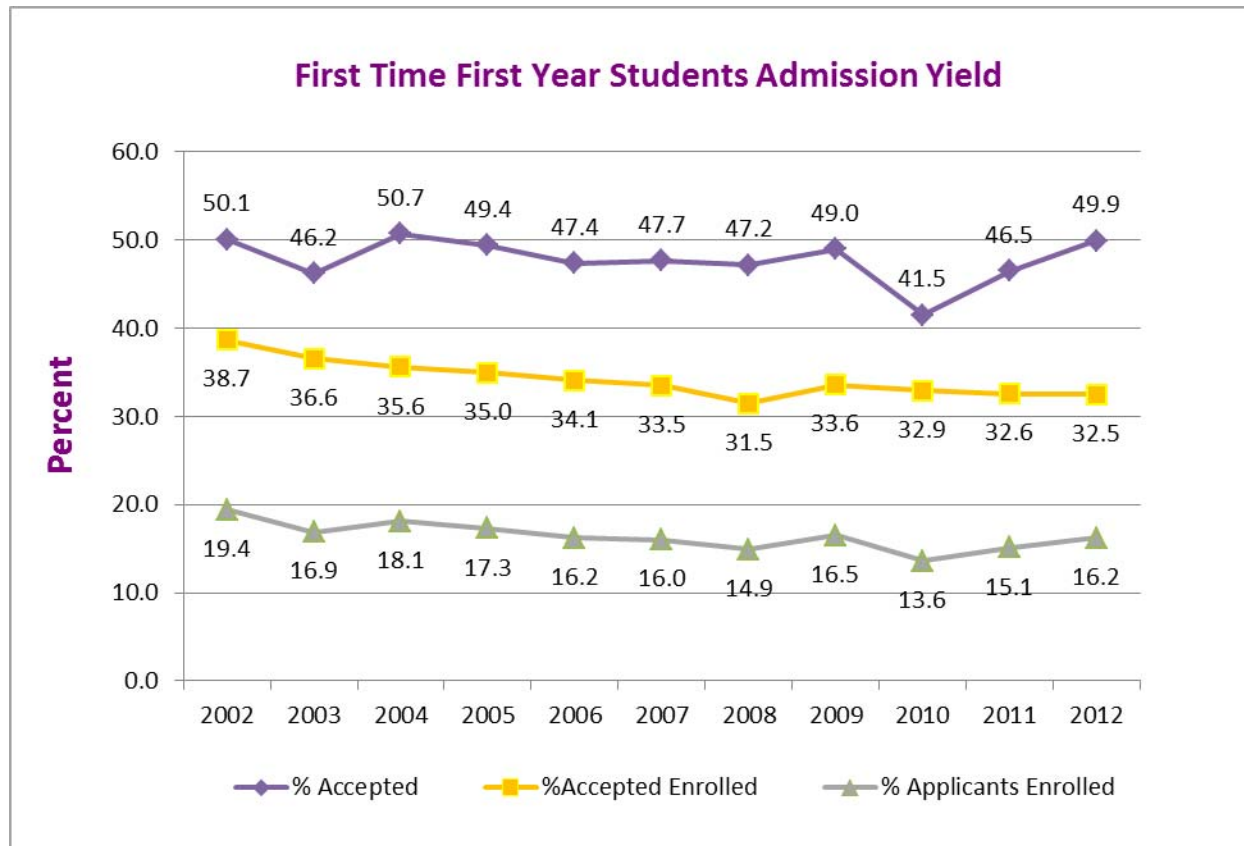
State	Total	Percent	Rank
Alabama			
Alaska			
Arizona			
Arkansas			
California	3	.1	7
Colorado			
Connecticut			
Delaware	41	1.8	3
District of Col.			
Florida	2	.1	8
Georgia			
Hawaii			
Idaho			
Illinois	1	.04	9
Indiana			
Iowa			
Kansas			
Kentucky			
Louisiana			
Maine	1	.04	9
Maryland	18	.8	4
Massachusetts	3	.1	7
Michigan	2	.1	8
Minnesota			
Mississippi			
Missouri			
Montana			

State	Total	Percent	Rank
Nebraska			
Nevada			
New Hampshire	1	.04	9
New Jersey	315	13.5	2
New Mexico			
New York	10	.4	5
North Carolina	1	.04	9
North Dakota			
Ohio			
Oklahoma			
Oregon			
Pennsylvania	1,919	82.5	1
Rhode Island			
South Carolina			
South Dakota			
Tennessee			
Texas			
Utah			
Vermont			
Virginia	6	.3	6
Washington			
West Virginia			
Wisconsin			
Wyoming			
Armed Forces			
Missing	3	.1	7
Total	2,326	100	

Admission Yield Statistics: Fall 2012

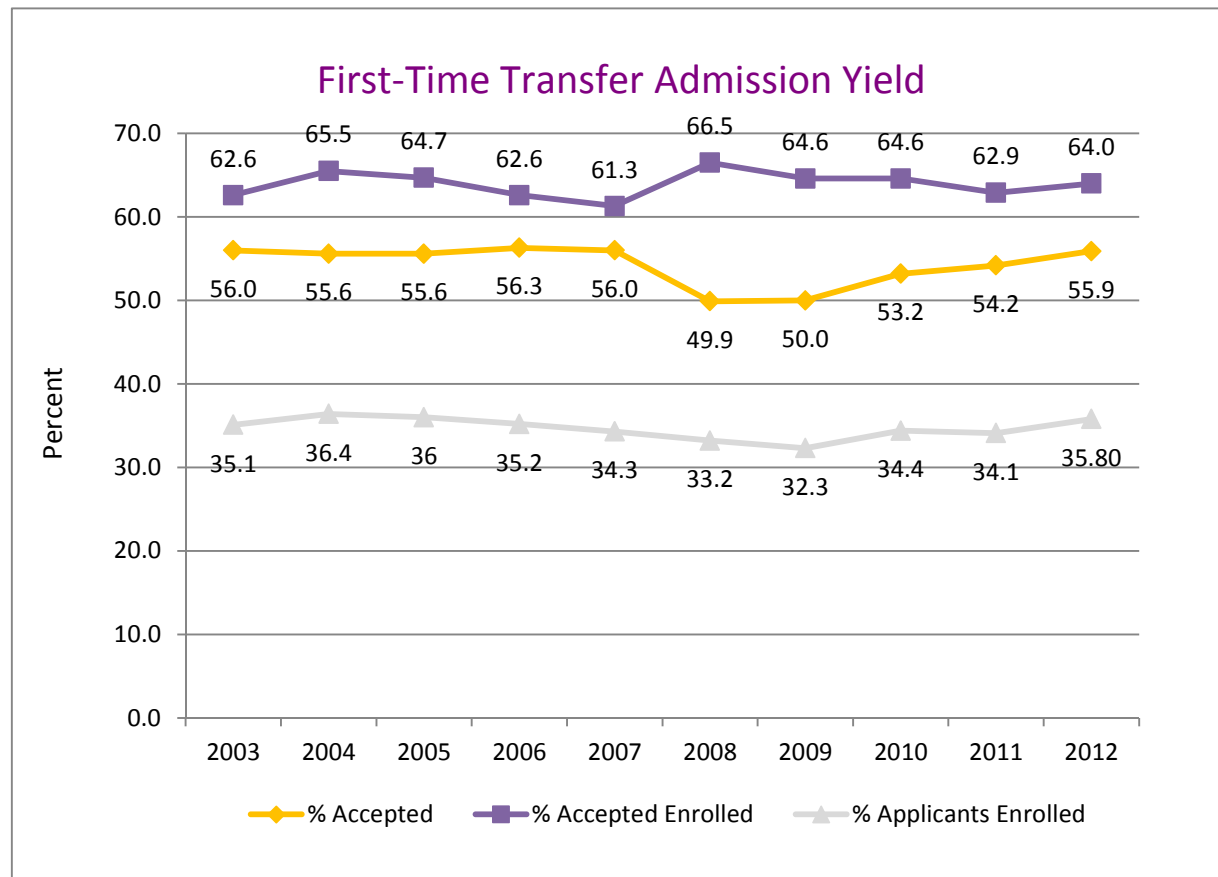
First-Time First Year Students Admission Yield

Year	# of Applicants	# Accepted	% Accepted	# Full-Time Enrolled	% Accepted Full-time Enrolled	% of Applicants Enrolled
2003	10,207	4,720	46.2	1,729	36.6	16.9
2004	10,401	5,273	50.7	1,879	35.6	18.1
2005	11,013	5,438	49.4	1,901	35.0	17.3
2006	11,669	5,530	47.4	1,885	34.1	16.2
2007	12,237	5,834	47.7	1,957	33.5	16.0
2008	13,353	6,317	47.2	1,993	31.5	14.9
2009	13,615	6,667	49.0	2,241	33.6	16.5
2010	15,123	6,268	41.5	2,062	32.9	13.6
2011	15,080	7,013	46.5	2,283	32.6	15.1
2012	14,356	7,161	49.9	2,326	32.5	16.2
5-YR	17.3	22.7	2.2	18.9	-1.0	0.2
1-YR	-18.9	-16.8	2.5	-14.3	-0.1	1.1



First-Time Transfer Admission Yield

Year	# of Applicants	# Accepted	% Accepted	# Enrolled	% of Accepted Enrolled	% of Applicants Enrolled
2004	2,638	1,468	55.6	961	65.5	36.4
2005	2,673	1,487	55.6	962	64.7	36.0
2006	2,690	1,514	56.3	948	62.6	35.2
2007	2,839	1,589	56.0	974	61.3	34.3
2008	3,224	1,609	49.9	1,070	66.5	33.2
2009	3,639	1,821	50.0	1,176	64.6	32.3
2010	3,607	1,920	53.2	1,241	64.6	34.4
2011	3,742	2,029	54.2	1,276	62.9	34.1
2012	3,678	2,057	55.9	1,316	64.0	35.8
5-YR	839	468	-0.1	342	2.7	1.5
1-YR	-64	28	1.7	40	1.1	1.7



ENROLLMENT

Head Count Enrollment by Gender and Ethnicity: Fall 2012

	Undergraduate		Graduate		Total*
	Full-Time	Part-time	Full-Time	Part-time	
Gender					
Male	4,888	537	194	452	6,071
Female	7,246	630	561	907	9,344
Ethnicity					
African American	1,029	116	117	119	1,381
Native American	17	2	1	3	23
Asian	230	23	15	42	310
Caucasian	9,998	916	553	1,081	12,548
Hawaiian/Pacific Islander	5	2	1	0	8
Hispanic	571	43	20	37	671
Non-Resident Alien	44	4	35	18	101
Multiracial	214	12	10	10	246
Not Supplied	26	49	3	49	127

Head Count Enrollment by Degree Status and College: Fall 2012

	Undergraduate		Graduate		Total*
	Full-Time	Part-time	Full-Time	Part-time	
Degree Status					
Degree Seeking	12,106	949	673	1,023	14,751
Non-degree Seeking	28	218	82	336	664
College					
Arts and Sciences	3,961	373	168	313	4,815
Business and Public Affairs	2,320	191	192	232	2,935
Education	1,203	30	180	415	1,828
Health Sciences	2,072	276	189	153	2,690
Visual and Performing Arts	665	41	18	53	777
Undeclared	1,913	256	8	193	2,370

*These headcounts are unduplicated counts within student's career level and do not reflect IPEDS unduplicated count.

Enrollment by State: Fall 2009 to Fall 2012

STATE	Fall 2009			Fall 2010			Fall 2011			Fall 2012			Rank
	UG	G	Total	UG	G	Total	UG	G	Total	UG	G	Total	
Alabama							1	1		2	2		
Alaska							1		1	1	1	2	
Arizona				1	1		1	1					
Arkansas	1		1	1		1	1	1	2	1		1	
California	3	1	4	1	3	4	2	2	4	7	1	8	10
Colorado	1		1	1		1	1		1	1		1	
Connecticut	17	4	21	13	2	15	14	2	16	11	2	13	7
Delaware	138	58	196	153	57	210	159	48	207	158	58	216	3
District of Col.	1		1	4	1	5	3	1	4	2		2	
Florida	4	1	5	4	2	6	5	1	6	9	2	11	8
Georgia				1	2	3		1	1		1	1	
Hawaii				1		1	1		1				
Idaho													
Illinois	1		1	1	1	2	3	2	5	1	1	1	
Indiana	4		4	2	1	3	2		2	2		2	
Iowa							1		1				
Kansas		1	1										
Kentucky								3	3		3	3	
Louisiana								1	1		1	1	
Maine		1	1	1	1	2	1	1	2	2		2	
Maryland	67	9	76	77	14	91	78	18	96	71	13	84	4
Massachusetts	5		5	8	1	9	7	3	10	7	3	10	9
Michigan	1	1	2		2	2		2	2	2	2	4	
Minnesota	1	1	2		1	1		1	1	1	1	2	
Mississippi								1	1				
Missouri		1	1								1	1	
Montana		1	1										
Nebraska													
Nevada													
New Hampshire	1	1	2	1	1	2	2		2	2		2	

Enrollment by State: Fall 2009 to Fall 2012 (continued)

STATE	Fall 2009			Fall 2010			Fall 2011			Fall 2012			Rank
	UG	G	Total	UG	G	Total	UG	G	Total	UG	G	Total	
New Jersey	1,045	64	1,109	1,096	60	1,156	1,151	63	1,214	1,243	57	1,300	2
New Mexico							2	2		2	2		
New York	45	11	56	51	12	63	47	14	61	48	13	61	5
North Carolina	2	1	3	3	1	4	3		3	3		3	
North Dakota													
Ohio	5	1	6	4		4	4	2	6	4	2	6	
Oklahoma					1	1		1	1				
Oregon										1		1	
Pennsylvania	10,548	2,125	12,673	10,777	2,058	12,835	11,271	2,045	13,316	11,645	1,889	13,534	1
Rhode Island	2		2	2		2					1	1	
South Carolina	4	1	5		1	1		1	1	1	1	2	
South Dakota													
Tennessee													
Texas	2	1	3	3	1	4	6	1	7	3		3	
Utah													
Vermont										1		1	
Virginia	14	2	16	15	5	20	15	5	20	14	5	19	6
Virgin Islands	1		1										
Washington							2		2	2		2	
West Virginia	1		1	2		2	3		3	3		3	
Wisconsin				1		1	1		1				
Wyoming													
Armed Forces	1		1	1		1	2		2	2	0	2	
International	5	5	10	10	29	39	48	42	90	53	52	105	4
TOTAL	11,920	2,291	14,211	12,234	2,258	14,492	12,834	2,266	15,100	13,301	2,114	15,415	
In-State	10,548	2,125	12,673	10,777	2,058	12,835	11,271	2,045	13,316	11,645	1,889	13,534	
Out-of-State	1,372	166	1,538	1,457	200	1,657	1,563	221	1,784	1,656	225	1,881	
In-State %	88.5%	92.8%	89.2%	88.1%	91.1%	88.6%	87.8%	90.2%	88.2%	87.5%	89.4%	87.8%	

Enrollment by County for Pennsylvania Residents: Fall 2012 (Top 10 Counties with Most Enrollments Ranked)

County	Total	Percent	Rank
Adams	55	.36	
Allegheny	33	.21	
Armstrong			
Beaver	6	.04	
Bedford	4	.03	
Berks	492	3.19	6
Blair	13	.08	
Bradford	4	.03	
Bucks	1,267	8.22	4
Butler	4	.03	
Cambria	2	.01	
Carbon	36	.23	
Centre	9	.06	
Chester	3,592	23.3	1
Clarion	1	.01	
Clearfield	5	.03	
Clinton	7	.05	
Columbia	17	.11	
Crawford	3	.02	
Cumberland	184	1.19	
Dauphin	181	1.17	
Delaware	2,437	15.81	2
Elk	1	.01	
Erie	6	.04	
Fayette	2	.01	
Franklin	41	.27	
Fulton			
Huntingdon	5	.03	
Indiana	3	.01	
Jefferson			
Juniata	1	.01	
Lackawanna	181	1.17	
Lancaster	462	3.00	7
Lawrence			

County	Total	Percent	Rank
Lebanon	54	.35	
Lehigh	328	2.13	8
Luzerne	123	.80	
Lycoming	30	.19	
McKean	2	.01	
Mercer	1	.01	
Mifflin	3	.02	
Monroe	115	.75	
Montgomery	2,020	13.10	3
Montour	6	.04	
Northampton	257	1.67	10
Northumberland	17	.11	
Perry	18	.12	
Philadelphia	998	6.47	5
Pike	34	.22	
Potter	1	.01	
Schuylkill	74	.48	
Snyder	13	.08	
Somerset			
Sullivan	1	.01	
Susquehanna	20	.13	
Tioga	3	.02	
Union	11	.07	
Venango	2	.01	
Warren	1	.01	
Washington	2	.01	
Wayne	30	.19	
Westmoreland	11	.07	
Wyoming	8	.05	
York	296	1.92	9
Out of State	1,776	11.52	
International	296	.69	
Missing			
Total	15,414	100.00	

Head Count Enrollment: Fall 2008 to 2012

Five-Year Enrollment by Ethnicity and Gender

Undergraduate Students

Ethnicity	2008		2009		2010		2011		2012	
	Male	Female	Male	Female	Male	Female	Male	Female	Male	Female
Caucasian	3,915	5,896	4,151	6,011	4,228	6,032	4,412	6,216	4,480	6,434
African American	336	661	371	674	413	723	465	768	415	730
Hispanic	115	226	121	253	162	273	210	339	245	369
Asian/Hawaiian/Pacific Islander	99	131	101	134	105	156	122	140	123	137
Native American	13	21	13	23	21	34	27	40	6	13
Nonresident Alien	0	2	9	13	4	2	19	29	19	29
Not Supplied/Multiracial	26	34	23	23	36	45	27	20	137	164
Total	4,504	6,971	4,789	7,131	4,969	7,265	5,282	7,552	5,425	7,876

Graduate Students

Ethnicity	2008		2009		2010		2011		2012	
	Male	Female	Male	Female	Male	Female	Male	Female	Male	Female
Caucasian	477	1,361	513	1,431	523	1,350	532	1,308	485	1,149
African American	49	94	58	112	59	138	66	177	77	159
Hispanic	4	30	6	31	13	38	11	42	18	39
Asian/Hawaiian/Pacific Islander	23	32	22	52	23	37	25	36	24	34
Native American	0	2	1	4	2	6	3	3	0	4
Nonresident Alien	32	25	24	30	24	36	19	28	14	39
Not Supplied/Multiracial	1	7	2	5	3	6	4	12	28	44
Total	586	1,551	626	1,665	647	1,611	660	1,606	646	1,468

Head Count Enrollment: Fall 2008 to 2012 Enrollment by College

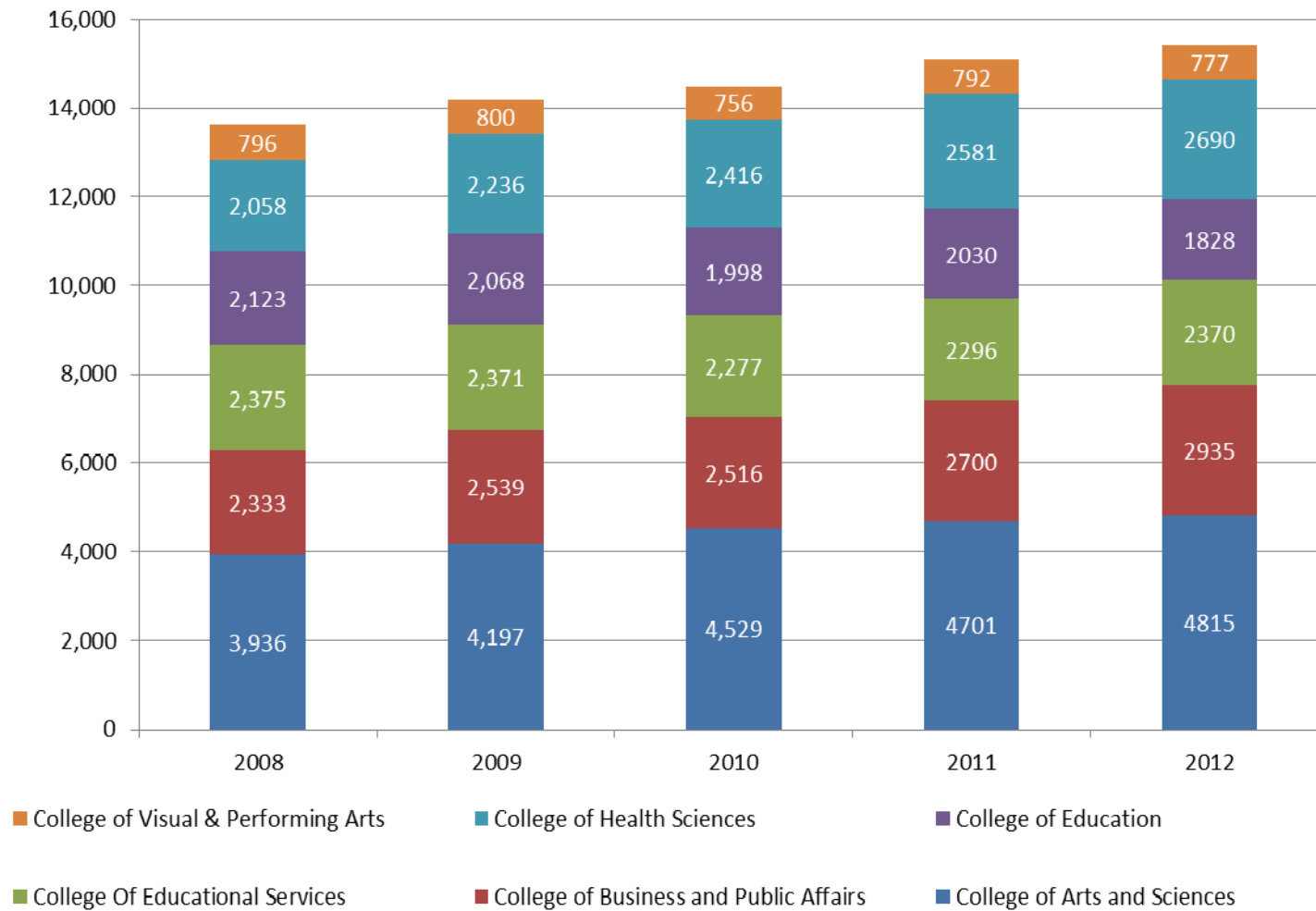
Undergraduate Students

College	2008	2009	2010	2011	2012
College of Arts and Sciences	3,468	3,637	3,964	4,161	4,334
College of Business and Public Affairs	2,094	2,245	2,196	2,327	2,511
College of Education	1,371	1,330	1,295	1,310	1,233
College of Health Sciences	1,761	1,931	2,069	2,243	2,348
College of Visual & Performing Arts	728	724	685	728	706
Non-Degree/Undeclared	2,062	2,053	2,025	2,065	2,169
Total	11,484	11,919	12,234	12,834	13,301

Graduate Students

College	2008	2009	2010	2011	2012
College of Arts and Sciences	468	560	565	540	481
College of Business and Public Affairs	239	294	320	373	424
College of Education	752	738	703	720	595
College of Health Sciences	297	305	347	338	342
College of Visual & Performing Arts	68	76	71	64	71
Non-Degree/Undeclared	313	318	252	231	201
Total	2,137	2,291	2,258	2,266	2,114

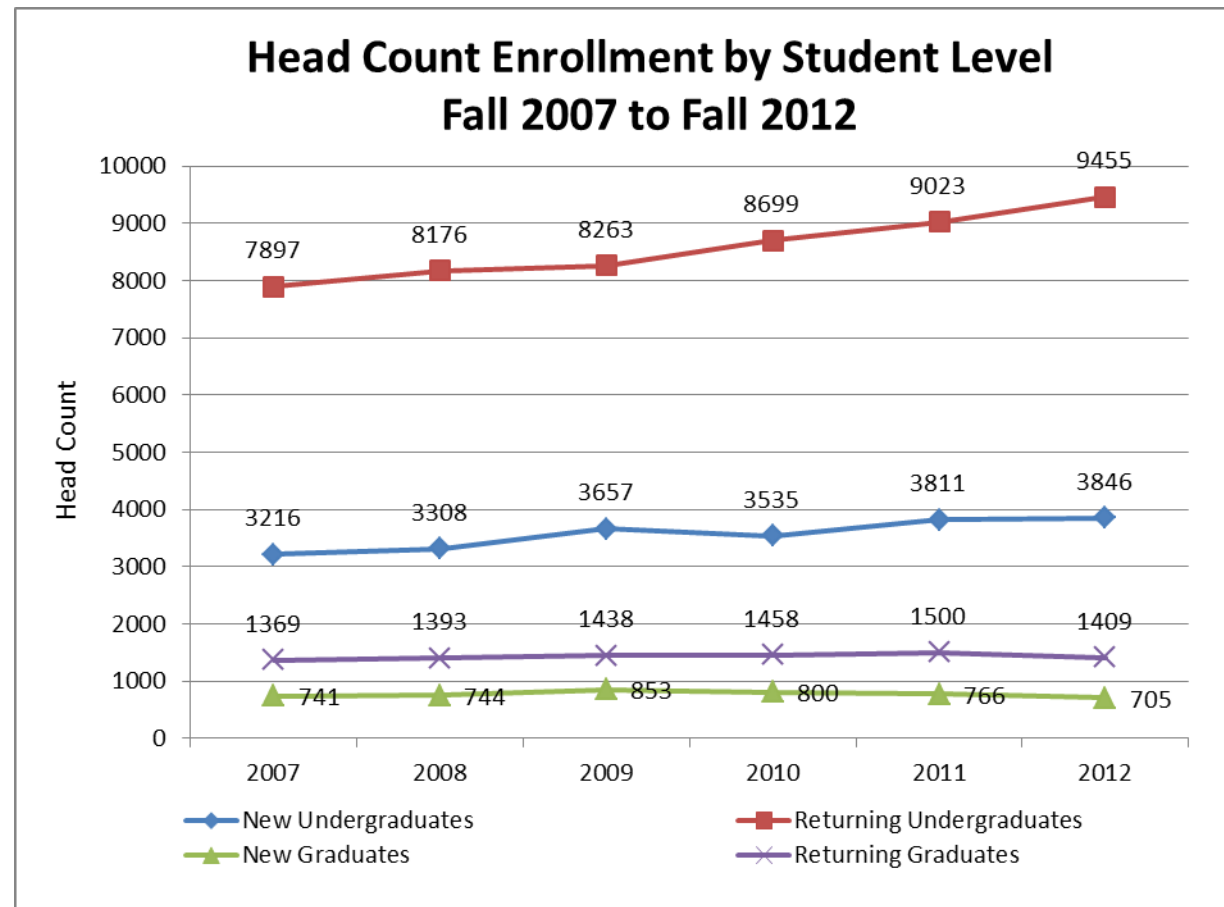
Combined Student Enrollment by College and Schools: Fall 2008 to Fall 2012



Note: Non-degree and Pre-major students are included in EDS (Education Services).

Head Count Enrollment by Student Level: Fall 2007 to Fall 2012

Fall Semester	2007	2008	2009	2010	2011	2012
Undergraduate						
New First Year Degree Seeking	1,965	2,002	2,248	2,067	2,292	2,334
New Transfer Degree Seeking	974	1,070	1,179	1,241	1,276	1,316
New Readmits Degree Seeking	105	92	87	87	104	98
New Undergraduate Non Degree	172	144	143	140	139	98
Returning Undergraduate Degree Seeking First Year	640	666	669	710	565	604
Returning Undergraduate Degree Seeking Sophomore	2,124	2,148	2,110	2,358	2,414	2,432
Returning Undergraduate Degree Seeking Junior	2,310	2,281	2,373	2,366	2,670	2,746
Returning Undergraduate Degree Seeking Senior	2,600	2,869	2,894	3,046	3,200	3,525
Returning Undergraduate Non Degree	223	212	217	219	174	148
Graduate						
New Masters	495	475	549	566	557	533
New Graduate Non Degree	246	269	304	234	209	172
Returning Masters	1,056	1,104	1,143	1,154	1,189	1,163
Returning Graduate Non Degree	313	289	295	304	311	246
Total Enrollment	13,223	13,621	14,211	14,492	15,100	15,415



Credit Hours and Student FTE Enrollment FY 2007-08 to FY 2011-12

Student FTE Enrollment: FY 2007-08 to FY 2011-12

	07-08	08-09	09-10	10-11	11-12
Lower Division Full-Time Equivalent Students	6,869.0	7,057.5	7,499.0	7,697.1	7,830.1
Upper Division Full-Time Equivalent Students	4,045.0	4,284.8	4,472.0	4,512.2	4,762.4
Graduate Division Full-Time Equivalent Students	1,384.0	1,427.1	1,521.0	1,538.1	1,466.0
Total Full-Time Equivalent Students	12,298.0	12,769.4	13,492.0	13,747.4	14,058.5

Credit Hours: FY 2007-08 to FY 2011-12

	07-08	08-09	09-10	10-11	11-12
College of Arts & Sciences	176,243.0	178,910.0	190,846.0	201,594.0	214,760.0
College of Business and Public Affairs	58,345.0	59,975.0	63,522.0	62,636.0	66,512.0
College of Education	47,884.0	47,109.0	48,049.0	45,471.0	42,496.0
College of Health Sciences	48,010.0	50,811.0	55,532.0	58,188.0	59,061.5
College of Visual and Performing Arts	28,349.5	29,066.0	28,571.5	26,892.0	27,566.0
Educational Services	1,906.0	1,723.0	1,926.0	1,911.0	2,562.0
Total University Credit Hours	360,737.5	367,594.0	388,746.5	396,692.0	412,957.5

Credit Hours by College and Course division For FY 2011-12

	Lower	Upper	Total Undergraduate	Graduate	Total
College of Arts & Sciences	156,140.0	49,950.0	206,090.0	8,670.0	214,760.0
College of Business and Public Affairs	26,226.0	32,814.0	59,040.0	7,472.0	66,512.0
College of Education	8,913.0	23,023.0	31,936.0	10,560.0	42,496.0
College of Health Sciences	23,938.5	27,915.0	51,853.5	7,208.0	59,061.5
College of Visual and Performing Arts	19,203.5	7,088.5	26,292.0	1,274.0	27,566.0
Educational Services	482.0	2,080.0	2,562.0	0	2,562.0
Total University Credit Hours	234,903.0	142,870.5	377,773.5	35,184.0	412,957.5



RETENTION AND GRADUATION

Retention and Graduation Rates for First-time, Full-Time, First-Year, Degree-Seeking Student Cohorts --University Summary

Fall Cohort	N 1st Fall	2nd Fall		3rd Fall		4th Fall		5th Fall				6th Fall				7th Fall			
		Cohort Retained		Cohort Retained		Cohort Retained		Cumulative Graduated within 4 yrs*		Cohort Retained		Cumulative Graduated within 5 yrs		Cohort Retained		Cumulative Graduated within 6 yrs		Cohort Retained	
		n	% IF	n	% IF	n	% IF	n	% IF	n	% IF	n	% IF	n	% IF	n	% IF	n	% IF
1995	1384	1129	81.6	985	71.2	902	65.2	363	26.2	512	37	761	55	89	6.4	816	59	33	2.4
1996	1454	1170	80.5	1003	69	945	65	376	25.9	527	36.2	771	53	103	7.1	833	57.3	35	2.4
1997	1577	1298	82.4	1116	70.8	1055	66.9	409	26	605	38.4	861	54.6	109	6.9	932	59.1	30	1.9
1998	1629	1353	83.2	1173	72.1	1070	65.8	474	29.1	577	35.5	898	55.2	108	6.6	964	59.3	34	2.1
1999	1715	1413	82.6	1219	71.3	1150	67.3	444	26	653	38.2	943	55.1	91	5.3	1023	59.8	24	1.4
2000	1721	1412	82.3	1275	74.3	1166	68	536	31.3	569	33.2	961	56	103	6	1037	60.5	35	2
2001	1631	1384	85.2	1222	75.2	1149	70.7	571	35.1	520	32	996	61.3	79	4.9	1050	64.6	29	1.8
2002	1768	1461	82.7	1290	73	1236	70	642	36.4	536	30.4	1049	59.4	97	5.5	1123	63.6	25	1.4
2003	1726	1466	85.1	1298	75.3	1207	70.1	685	39.8	481	27.9	1053	61.1	89	5.2	1121	65.1	21	1.2
2004	1874	1570	84	1361	72.8	1306	69.8	734	39.3	535	28.6	1153	61.7	95	5.1	1219	65.2	29	1.6
2005	1897	1607	84.8	1442	76.1	1378	72.8	813	42.9	528	27.9	1230	64.9	81	4.3	1294	68.3	26	1.4
2006	1885	1616	85.8	1467	77.9	1401	74.4	793	42.1	553	29.4	1222	64.9	93	4.9				
2007	1957	1650	84.4	1511	77.3	1428	73.0	842	43.1	536	27.4								
2008	1993	1683	84.5	1517	76.2	1453	72.9												
2009	2241	1909	85.2	1747	78														
2010	2062	1775	86.1																
2011	2283	1950	85.4																
2012	2326																		

Note: Data is from Fall enrollment at census dates and completions files as reported to IPEDS. Includes degree sweeps and IPEDS exclusions through 10/2012

Second-Year Retention Rates for First-Time, Full-Time, Degree-Seeking Freshmen by Race/Ethnicity

Fall Cohort	African American			Asian			Latino			Native American			Caucasian		
	N 1 st Fall	N 2 nd Fall	% Retained	N 1 st Fall	N 2 nd Fall	% Retained	N 1 st Fall	N 2 nd Fall	% Retained	N 1 st Fall	N 2 nd Fall	% Retained	N 1 st Fall	N 2 nd Fall	% Retained
2005	171	147	87.0	38	30	78.9	66	56	84.8	3	3	100.0	1614	1367	84.7
2006	174	151	87.3	43	36	85.7	66	46	69.2	5	4	80.0	1597	1379	86.3
2007	190	151	79.5	39	35	89.7	62	44	71.0	9	9	100.0	1656	1411	85.3
2008	201	168	83.6	44	37	84.1	90	77	85.6	5	4	80.0	1648	1396	84.8
2009	178	152	85.4	39	34	87.2	85	64	75.3	6	6	100.0	1908	1631	85.5
2010	233	171	83.8	41	36	87.8	115	88	76.5	2	1	50.0	1644	1424	86.6
2011	191	154	80.6	30	26	86.7	162	132	81.5	1	1	100.0	1839	1588	86.4
2012	211			47			136			0			1881		

Second-Year Retention Rates for First-Time, Full-Time, Degree-Seeking Freshmen by Gender

Fall Cohort	Male			Female		
	N 1 st Fall	N 2 nd Fall	% Retained	N 1 st Fall	N 2 nd Fall	% Retained
2005	677	556	82.1	1217	1051	86.4
2006	683	558	81.7	1200	1058	88.2
2007	741	612	82.7	1215	1038	85.4
2008	762	635	83.4	1231	1048	85.1
2009	888	745	83.9	1353	1164	86.0
2010	767	643	83.8	1295	1132	87.4
2011	904	754	83.4	1379	1196	86.7
2012	869			1457		

Four Year Graduation Rates for First-Time, Full-Time Freshmen by Ethnicity

Fall Cohort	African American			Asian			Latino			Native American			Caucasian		
	N 1st Fall	N Grad	% Grad	N 1st Fall	N Grad	% Grad	N 1st Fall	N Grad	% Grad	N 1st Fall	N Grad	% Grad	N 1st Fall	N Grad	% Grad
2003	182	47	25.8	25	8	32.0	58	19	32.8	1	0	0	1447	606	42.0
2004	166	39	23.8	35	13	37.1	58	14	24.1	4	1	25.0	1609	667	41.5
2005	171	51	30.2	38	13	34.2	66	26	39.4	3	1	33.3	1614	722	44.7
2006	174	41	23.7	43	14	33.3	66	18	27.3	5	1	20.0	1597	719	45.0
2007	190		23.7	39		46.2	61		24.6	9		44.4	1655		46.7
2008															

Six Year Graduation Rates for First-Time, Full-Time Freshmen by Ethnicity

Fall Cohort	African American			Asian			Latino			Native American			Caucasian		
	N 1st Fall	N Grad	% Grad	N 1st Fall	N Grad	% Grad	N 1st Fall	N Grad	% Grad	N 1st Fall	N Grad	% Grad	N 1st Fall	N Grad	% Grad
2001	138	71	51.8	37	17	45.9	48	30	62.5	7	5	71.4	1396	924	66.4
2002	142	76	53.5	37	22	59.5	42	21	50.0	8	4	50.0	1537	999	65.1
2003	182	98	53.8	25	14	56.0	58	34	58.6	1	0	0.0	1447	969	67.1
2004	166	86	52.4	35	20	57.1	58	35	60.3	4	1	25.0	1609	1077	67.0
2005	169		58.0	38		65.8	66		60.6	3		33.3	1614		70.3
2006															

Four & Six Year Graduation Rates for First-Time, Full-Time Freshmen by Gender

Fall Cohort	Male						Female					
	N 1st Fall	4 Yr Grad		6Yr Grad			N 1st Fall	4 Yr Grad		6 Yr Grad		
		#	%	#	%			#	%	#	%	
2001	608	144	23.8	344	56.8		1023	427	41.9	706	69.3	
2002	662	168	25.4	362	54.7		1106	474	42.9	761	68.9	
2003	606	152	25.2	355	58.8		1120	533	47.6	766	68.5	
2004	658	177	27.0	379	57.8		1216	557	45.9	840	69.2	
2005	678	216	31.9		61.9		1219	597	49.1		72.2	
2006	683	191	28.0				1202	602	50.1			
2007	740		31.6				1215		51.1			
2008												

ACADEMIC DEGREE AND CERTIFICATE PROGRAMS

Undergraduate Degree and Certificate Programs - Fall 2012

College of Arts and sciences

BA American Studies
 BA Anthropology
 BA Biology
 BA Communication Studies
 BA English: Literature
 BA English: Writings
 BA French
 BA German
 BA History
 BA Latin
 BA Liberal Studies: Arts and Sciences
 BA Liberal Studies: Career Preparation
 BA Literature
 BA Mathematics
 BA Philosophy
 BA Philosophy: Religious Studies
 BA Psychology
 BA Russian
 BA Sociology
 BA Spanish
 BA Women's and Gender Studies
 BS Biochemistry
 BS Biology
 BS Biology: Cell and Molecular
 BS Biology: Ecology and Conservation
 BS Biology: Marine Science
 BS Biology: Medical Technology
 BS Biology: Microbiology
 BS Chemistry
 BS Chemistry-Biology
 BS Computer Science
 BS Forensic & Toxicological Chemistry
 BS Geoscience - Geology
 BS Geoscience : Earth Systems
 BS Liberal Studies: Professional Studies
 Track
 BS Liberal Studies: Science-Math
 BS Mathematics: Actuarial Science

BS Mathematics: Computational
 Mathematics
 BS Mathematics: Industrial Mathematics
 BS Mathematics: Mathematical Finance
 BS Mathematics: Statistics
 BS Pharmaceutical Product Development
 BS Physics
 BS Physics-Engineering
 BSED Biology
 BSED Chemistry
 BSED Earth-Space Science
 BSED Earth-Space Science : Geology
 BSED English: Literature
 BSED English: Writings
 BSED Mathematics
 BSED Physics
 Certificate Computer Security
 Certificate TESL
 TC Biology
 TC Chemistry
 TC Communications
 TC Earth-Space Science
 TC English
 TC Foreign Lang
 TC French
 TC General Science
 TC German
 TC Latin
 TC Mathematics
 TC Physics
 TC Russian
 TC Social Studies
 TC Spanish

College of Business and Public affairs

BA Geography
 BA Geography: Environmental
 BA Geography: Geographic Information
 Systems

BA Geography: Urban/Regional Planning
 BA Political Science
 BA Political Science: International
 Relations
 BA Political Science: Applied Public Policy
 BS Accounting
 BS Business Management
 BS Criminal Justice
 BS Economics
 BS Finance
 BS Marketing
 BSW Social Work
 TC Social Studies

College of Education

BSED Early Childhood Education
 BSED Early Grades Prep, PK-4 Education
 BSED Elementary Education
 BSED Middle Grades Prep, 4-8 Education
 BSED Special Education
 BSED Special Education: 7-12
 BSED Special Education: PK-8
 Certificate Education for Sustainability
 TC Early Childhood Education
 TC Elementary Education

College of Health

BA Communicative Disorders
 BS Athletic Training
 BS Exercise Science
 BS Exercise Science: Pre-Chiropractic
 BS Exercise Science: Pre-Occupational
 Therapy
 BS Exercise Science: Pre-Physical Therapy
 BS Health and Physical Education
 BS Health Science: General
 BS Health Science: Respiratory Care
 BS Nutrition and Dietetics

BS Public Health: Environmental
BS Public Health: Health Promotion
BSN Nursing
BSN Nursing
BSN Nursing
Certificate Athletic Training
TC Health & Physical Educ
TC Speech Correction

College pf Visual and Performing Arts
BA Studio Arts
BA Theatre

BA Theatre and Dance: Dance
BA Theatre: Design, Technology,
Management
BA Theatre: Musical Theatre
BA Theatre: Performance
BFA Studio Arts
BM Music Education: Instrument
BM Music Education: Keyboard
BM Music Education: Voice
BM Music: Composition
BM Music: Elective Studies
BM Music: History

BM Music: Performance - Instrument
BM Music: Performance - Jazz
BM Music: Performance - Keyboard
BM Music: Performance - Voice
BM Music: Theory
BM Music: Theory & Composition
TC Music Education

Educational Services
Certificate Leadership and Civic
Engagement

Note : TC is recommended as Teacher Certification

Graduate Degree and Certificate Programs - Fall 2012

College of Arts and Sciences

Certificate Applied Statistics
 Certificate Gerontology
 Certificate Holocaust and Genocide Studies
 Certificate Business Ethics
 Certificate Computer Security
 Certificate Healthcare Ethics
 Certificate Information Systems
 Certificate Leadership for Women
 Certificate TESL
 Computer Science (Certificate)
 Graduate Certificate Web Technology
 Letter of Completion: Clinical Mental Health
 MA Communication Studies
 MA English
 MA English - Non-Thesis Option
 MA French
 MA Geoscience
 MA History
 MA Holocaust and Genocide Studies
 MA Mathematics
 MA Philosophy: Applied Ethics
 MA Philosophy: General
 MA Psychology - Clinical
 MA Psychology - General
 MA Psychology - Industrial/Organizational
 MA Spanish
 MA TESL
 MED French
 MED German
 MED History
 MED Spanish
 MPA Leadership for Women
 MPA Long-Term Care

MS Applied Statistics
 MS Biology
 MS Biology : Thesis
 MS Computer Science
 MSA Leadership for Women
 MSA Long-Term Care
 TC Biology
 TC Chemistry
 TC Earth-Space Science
 TC English
 TC French
 TC General Science
 TC German
 TC Latin
 TC MathematicsTC Physics
 TC Social Studies
 TC Spanish

College of Business and Public affairs

Certificate Business
 Certificate Human Resource Management
 Certificate Administration
 Certificate Geographic Information Systems
 Certificate Non Profit Administration
 Certificate Urban and Regional Planning
 MA Geography
 MBA Economics-Finance
 MBA Executive
 MBA General
 MBA Management
 MBA Technology - Electronic Commerce
 MPA Human Resource Management
 MPA Individualized Program
 MPA Nonprofit Administration

MPA Public Administration
 MPA Regional Planning
 MPA Training and Development
 MS Criminal Justice
 MSA Human Resource Management
 MSA Public Administration
 MSA Training and Development
 MSW Social Work

College of Education

Certificate Educational Technology
 Certificate Autism
 Certificate Education for Sustainability
 Certificate Educational Technology
 Certificate Entrepreneurial Education
 Certificate Literacy Coaching
 Certificate Universal Design for Learning and Assistive Technology
 Certificate Literacy
 Certificate Special Education
 Letter of Completion: Professional Counseling Licensure Prep
 MED Applied Studies in Teaching and Learning
 MED Counseling - Elementary
 MED Counseling - Secondary
 MED Early Childhood Education
 MED Reading
 MED Secondary Education
 MED Special Education
 MED Special Education
 MED Special Education
 MS - Higher Education
 Counseling/Student Affairs
 TC Counseling

TC Early Childhood Education
 TC Early Grades Preparation
 TC Elementary Education
 TC Middle Grades Preparation
 TC Reading
 TC Secondary Education
 TC Special Education: 7-12
 TC Special Education: K-12
 TC Special Education: PK-8

College of Health

Certificate Adapted Physical Education
 Certificate Emergency Preparedness-
 Health
 Certificate Health Care Administration
 Certificate Health: Integrative Health
 Certificate Nursing Education
 Certificate Sports Management and
 Athletics
 MA Communicative Disorders

MED Health - School Health
 MPA Sport Management and Athletics
 MPH Public Health: Community Health
 MPH Public Health: Integrative Health
 MPH: Environmental Health
 MPH: Health Administration
 MPH: Nutrition
 MS Exercise and Sport Physiology
 MS Exercise and Sport Physiology:
 Athletic Training
 MS Health and Physical Education -
 Sport/Exercise Physiology
 MS Physical Education
 MSA Sport and Athletic Administration
 MSN Public Health Nursing:
 Administration
 MSN Public Health Nursing: Education
 MSN Public Health Nursing: Integrative
 Health
 TC Health & Physical Educ

TC School Nursing
 TC Speech Correction

College of Visual and Performing Arts

Certificate Kodaly Methodology
 Certificate Music Technology
 Certificate Orff-Schulwerk
 Certificate Piano Pedagogy
 MA Music History
 MM Composition
 MM Music Education: Performance
 MM Music Education: Research
 MM Music Education: Technology
 MM Music Performance
 MM Music: History and Literature
 MM Music: Piano Pedagogy
 MM Music: Theory & Composition
 TC Music Education

Note : TC is recommended as Teacher Certification

Professional and Program Accreditations

West Chester University is accredited by
The Middle States Association of Colleges and Secondary Schools on Higher Education

College of Arts and Sciences

Biology BSED and Biology Teaching Certificate --PDE, NCATE, NSTA

Chemistry BS--ACS

Chemistry BSED and Chemistry Teaching Certificate -- PDE, NCATE, NSTA

Communications Teaching Certificate -- PDE, NCATE

Computer Science BS -- ABET

Earth-Space Science BSED and Earth-Space Science Teaching Certificate -- NCATE, NSTA

Elective Social Studies, Geography, History, and Political Science Teaching Certificate--PDE, NCATE, NCSS

English BSED and English Teaching Certificate--PDE, NCATE, NCTE

Forensic & Toxicological Chemistry BS--FEPAC

French MED--NCATE, ACTFL

French Teaching Certificate--PDE, NCATE, ACTFL

General Science Teaching Certificate--PDE, NCATE, NSTA

German MED--NCATE, ACTFL

German Teaching Certificate--PDE, NCATE, ACTFL

History MED--PASSHE, NCATE, NCSS

History Teaching Certificate--PDE, NCATE, NCSS

Latin Teaching Certificate--PDE, NCATE, ACTFL

Professional and Program Accreditations (Continued)

Mathematics BSED and Mathematics Teaching Certificate--PDE, NCATE, NCTM

Physics BSED and Physics Teaching Certificate--PDE, NCATE, NSTA

Russian Teaching Certificate--PDE, NCATE, ACTFL

Spanish MED --NCATE

Spanish Teaching Certificate--PDE, NCATE, ACTFL

Teaching English as a Second Language MA and Teaching English as a Second Language Certificate--PDE, NCATE

College of Business and Public Affairs

Accounting BS -- AACSB

Business Administration MBA -- AACSB

Business Management BS -- AACSB

Economics BS -- AACSB

Finance BS -- AACSB

Marketing BS -- AACSB

Social Work BSW and Social Work MSW -- CSWE

College of Education

Counseling: Elementary School Counseling MED--PDE, NCATE, CACREP

Counseling: Higher Education/Student Affairs MS—CACREP

Professional and Program Accreditations (Continued)

Counseling: Secondary School Counseling MED--PDE, NCATE, CACREP

Counseling (Elementary or Secondary) Specialist I Certificate -- PDE, NCATE, CACREP

Early Childhood Education BSED and Early Childhood Education Teaching Certificate -- PDE, NCATE, NAEYC

Early Childhood Education MED -- PASSHE, NCATE, NAEYC

Elementary Education BSED and Elementary Education Teaching Certificate -- PDE, NCATE, ACEI

Elementary Education MED -- PASSHE, NCATE, ACEI

Reading MED and Reading Specialist Certificate -- PDE, NCATE, IRA

Secondary Education MED -- NCATE

Special Education BSED and Special Education Teaching Certificate -- PDE, NCATE, CEC

Special Education MED -- PASSHE, NCATE, CEC

College of Health Sciences

Athletic Training BS -- CAATE

Communicative Disorders Speech Correction Teaching Certificate--PDE, NCATE

Communicative Disorders MA – NCATE, ASHA

Health: School Health MED -- AAHE

Health & Physical Education BS and Health & Physical Education Teaching Certificate -- PDE, NCATE, NASPE

Health & Physical Education: Exercise Physiology MS -- COAES

Health Science: Respiratory Care BS -- CAAHEP

Nursing BSN and Nursing MSN and Nursing Education Certificate -- CCNE

Nursing: Parish Nurse – In moratorium

Nursing: RN to BSN -- CCNE

Professional and Program Accreditations (Continued)

Nutrition and Dietetics BS -- CADE

Public Health MPH -- CEPH

School Nursing Certificate--PDE, NCATE, CCNE and will also be going into moratorium

College of Visual and Performing Arts

Music Education: Instrumental BM--PDE, NCATE, NASM

Music Education: Keyboard BM--PDE, NCATE, NASM

Music Education: Voice BM--PDE, NCATE, NASM

Music Education: Music Technology MM -- NCATE, NASM

Music Education: Orff-Schulwerk MM – NCATE, NASM. AOSA

Music Education: Performance MM and Research Report MM – NCATE. NASM, OAKE

Music Education Teaching Certificate--PDE, NCATE, NASM

Music: Elective Studies BM--NASM

Music History MA--NASM

Music-Performance BM--NASM

Music Performance MM--NASM

Music: Piano Pedagogy MM--NASM

Music: Theory & Composition BM and Music: Theory & Composition MM--NASM

Studio Arts BA and Studio Arts BFA--NASAD

Theatre Arts: General BA--NAST

Theatre Arts: Music Theatre BA--NAST

Theatre Arts: Performance BA---NAST

Theatre Arts: Technical Production BA--- NAST



DEGREES CONFERRED

Undergraduate and Graduate Degrees Conferred: Academic Years 2005-2006 through 2011-2012

Academic Plan	Degree Year						
	2005-06	2006-07	2007-08	2008-09	2009-10	2010-11	2011-12
College of Arts and Sciences							
Anthropology and Sociology							
Undergraduate							
Anthropology BA	5	3	11	15	11	9	8
Anthropology-Sociology BA	0	0	0	0	0	0	-
Sociology BA	18	24	19	30	24	22	35
Total Undergraduate	23	27	30	45	35	31	43
Graduate							
Long-Term Health Care MSA	3	1	0	0	0	1	1
Total Graduate	1	3	1	0	0	0	1
Department Totals	26	28	30	45	35	32	44

Biology

Undergraduate							
Biology BA	3	0	3	2	1	1	3
Biology BSED	6	4	8	8	6	6	7
Biology BS	14	17	19	34	28	28	39
Biology: Microbiology BS	3	3	5	7	6	6	3
Biology: Ecology BS	5	3	1	2	3	3	9
Biology: Medical Technology BS	1	1	1	1	1	1	2
Biology: Cell & Molecular BS	5	8	10	7	3	3	22
Total Undergraduate	37	36	47	61	48	75	85
Graduate							
Biology MS	4	4	6	5	3	3	2
Biology - Thesis MS	2	2	3	6	3	3	5
Total Graduate	6	9	9	11	6	6	7
Department Totals	43	45	56	72	54	81	82

Undergraduate and Graduate Degrees Conferred: Academic Years 2005-2006 through 2011-2012

Academic Plan	Degree Year						
	2005-06	2006-07	2007-08	2008-09	2009-10	2010-11	2011-12
Chemistry							
Undergraduate							
Chemistry BSED	1	1	0	4	2	1	0
Chemistry-Biology * BS	5	16	7	14	5	9	13
Chemistry BS	4	4	7	7	7	2	4
Biochemistry BS	0	3	3	3	1	2	6
Foreign & Toxicology Chemistry BS	15	15	7	7	10	6	7
Total Undergraduate	25	39	24	35	25	20	30
Graduate							
Physical Science: Chemistry MA	0	0	0	0	0	0	-
Chemistry MED	0	0	0	0	0	0	-
Chemistry MS	1	0	0	0	0	0	-
Clinical Chemistry MS	0	1	1	0	0	0	-
Total Graduate	1	1	1	0	0	0	-
Department Totals	26	40	25	35	25	20	30
Communications Studies							
Undergraduate							
Communication Studies BA	130	114	106	116	122	142	119
Communication-Comm/Tha BSED	1	0	0	0	0	0	-
Communication-Theatre/Med BSED	0	0	0	0	0	0	-
Communication-Theatre/Med BSED	0	0	0	2	0	0	-
Total Undergraduate	131	114	106	118	122	142	119
Graduate							
Communication Studies MA	4	9	6	13	7	18	7
Total Graduate	4	9	6	13	7	18	7
Department Totals	135	123	112	131	129	160	126

Undergraduate and Graduate Degrees Conferred: Academic Years 2005-2006 through 2011-2012

Academic Plan	Degree Year						
	2005-06	2006-07	2007-08	2008-09	2009-10	2010-11	2011-12
Computer Science							
Undergraduate							
Computer Science BS	28	19	21	32	33	27	17
Total Undergraduate	28	19	21	32	33	27	17
Graduate							
Computer Science MS	15	12	9	10	11	7	7
Total Graduate	15	12	9	10	11	7	7
Department Totals	43	31	30	42	44	34	24
English							
Undergraduate							
Comparative Literature BA	5	2	0	0	0	0	0
Literature BA	36	45	12	7	0	0	0
English BA: Literature	0	0	36	59	45	37	25
English BA: Writings	0	0	0	0	12	36	36
English BSED: Literature	28	25	28	34	33	27	23
English BSED: Writings	0	0	0	0	2	11	8
Total Undergraduate	69	72	76	100	92	111	92
Graduate							
English MA	19	24	32	24	24	12	28
Writing, Teaching & Criticism MA	0	1	0	0	0	0	-
TESL MA	16	26	13	14	7	13	10
English - Non-Thesis Option MA	1	0	0	0	0	0	0
Total Graduate	36	51	45	38	31	25	38
Department Totals	105	123	121	138	123	136	130

Undergraduate and Graduate Degrees Conferred: Academic Years 2005-2006 through 2011-2012

Academic Plan	Degree Year						
	2005-06	2006-07	2007-08	2008-09	2009-10	2010-11	2011-12
Geology & Astronomy							
Undergraduate							
Earth-Space Science - Environmental BSED	0	0	0	0	0	0	-
Earth-Space Science BSED	3	7	5	5	2	7	5
Earth-Space Science - Geology BSED	2	0	0	0	0	0	-
Geoscience - Earth Systems BS	2	7	3	9	5	1	14
Geoscience: Geology BS	4	6	7	4	6	3	9
Geoscience: Environ Geoscience BS	0	0	0	1	0	0	-
Total Undergraduate	13	11	20	15	19	13	28
Graduate							
Geoscience MA	2	3	6	4	7	11	8
Total Graduate	2	3	6	4	7	11	8
Department Totals	13	23	21	23	20	22	36
Foreign Language							
Undergraduate							
French BA	3	4	4	8	5	7	6
German BA	0	1	5	5	2	5	2
Latin BA	0	1	1	3	1	2	0
Russian BA	0	1	3	3	2	1	4
Spanish BA	12	12	16	13	26	10	21
French BSED	0	0	0	0	0	0	-
German BSED	0	0	0	0	0	0	-
Spanish BSED	3	1	0	1	0	0	-
Total Undergraduate	18	20	29	33	36	25	33

Undergraduate and Graduate Degrees Conferred: Academic Years 2005-2006 through 2011-2012

Academic Plan	Degree Year						
	2005-06	2006-07	2007-08	2008-09	2009-10	2010-11	2011-12
<i>Foreign Language (continued)</i>							
Graduate							
French MA	1	2	3	3	2	7	6
Spanish MA	1	3	0	2	3	2	3
French MED	1	0	0	1	1	0	1
Spanish MED	3	2	0	2	0	2	2
Total Graduate	6	7	3	8	6	11	12
Department Totals	24	27	32	41	42	37	45
<i>History</i>							
Undergraduate							
American Studies BA	4	0	2	0	0	1	4
History BA	65	62	68	81	84	86	103
Social Studies: History BSED	8	2	0	0	0	0	-
Total Undergraduate	77	64	70	81	84	87	107
Graduate							
History MA	10	10	6	6	10	11	6
Holocaust & Genocide Studies MA	2	2	6	6	6	7	4
History MED	1	5	0	1	2	2	0
Total Graduate	13	17	12	13	18	20	10
Department Totals	90	81	82	94	102	111	117
<i>Liberal Studies</i>							
Undergraduate							
Liberal Studies: Arts & Science BA	18	19	24	23	24	27	35
Liberal Studies: Career Pre BA	6	1	2	0	2	1	-
Pharmaceutical Product Dev BS	8	11	6	11	10	15	7
Liberal Studies: Science /Math BS	8	5	6	9	8	10	9
Liberal Studies: Profession BS	187	179	187	247	160	202	220
Total Undergraduate	227	215	225	290	204	255	271
Department Totals	227	215	225	290	204	255	271

Undergraduate and Graduate Degrees Conferred: Academic Years 2005-2006 through 2011-2012

Academic Plan	Degree Year						
	2005-06	2006-07	2007-08	2008-09	2009-10	2010-11	2011-12
Mathematics							
Undergraduate							
Mathematics BA	4	6	5	3	5	2	3
Mathematics: Actuarial Science BS							4
Mathematics-Computer Science BA	0	0	0	0	0	0	0
Mathematics : Finance BS	0	0	9	9	13	5	2
Mathematics BSED	19	24	16	19	14	17	18
Mathematics: Industrial BS						1	2
Mathematics: Computational BS						1	0
Mathematics: Statistics BS						2	3
Total Undergraduate	23	30	30	31	32	28	32
Graduate							
Mathematics MA	3	5	2	9	7	5	10
Applied Statistics MS	11	9	21	25	24	24	15
Total Graduate	14	14	23	34	31	29	25
Department Totals	37	44	53	65	63	57	57
Philosophy							
Undergraduate							
Philosophy BA	7	6	7	11	11	7	10
Philosophy-Religious Studies BA	1	1	1	2	3	1	4
Total Undergraduate	8	7	8	13	14	8	14
Graduate							
Philosophy MA: Applied Ethics	0	0	0	0	1	1	0
Philosophy MA: General	5	5	3	1	4	7	3
Total Graduate	5	5	3	1	4	7	3
Department Totals	13	12	11	14	19	16	17
Physics							
Undergraduate							
Physics BSED	2	1	2	1	1	2	2
Physics BS	3	4	1	5	5	1	8
Physics-Engineering BS	2	0	0	0	1	2	2
Total Undergraduate	7	5	3	6	7	5	12
Department Totals	7	5	3	6	7	5	12

Undergraduate and Graduate Degrees Conferred: Academic Years 2005-2006 through 2011-2012

Academic Plan	Degree Year						
	2005-06	2006-07	2007-08	2008-09	2009-10	2010-11	2011-12
Psychology							
Undergraduate							
Psychology BA	106	111	125	130	125	151	156
Social Studies: Psychology BSED	0	0	0	0	0	0	-
Total Undergraduate	106	111	125	130	125	151	156
Graduate							
Psychology: Clinical MA	18	14	16	21	32	18	15
Psychology: General MA	2	3	2	2	1	1	2
Psychology: Industrial MA	5	4	14	7	12	10	11
Total Graduate	25	21	32	30	45	29	28
Department Totals	131	132	157	160	170	180	184
<hr/>							
Women's Studies							
Undergraduate							
Women's Studies BA	5	3	3	4	3	8	11
Total Undergraduate	5	3	3	4	3	8	11
Graduate							
Leadership for Women MSA	1	0	1	0	0	0	0
Total Graduate	1	0	1	0	0	0	0
Department Totals	6	3	4	4	3	8	11
<i>College of Arts and Sciences Undergraduate Totals</i>	795	782	812	998	873	984	1,050
<i>College of Arts and Sciences Graduate Totals</i>	131	150	150	162	167	170	146
<i>College of Arts and Sciences Totals</i>	926	932	962	1160	1040	1154	1196

Undergraduate and Graduate Degrees Conferred: Academic Years 2005-2006 through 2011-2012

Academic Plan	Degree Year						
	2005-06	2006-07	2007-08	2008-09	2009-10	2010-11	2011-12
College of Business and Public Affairs							
Accounting							
Undergraduate							
Accounting BS	57	56	63	91	104	96	77
Total Undergraduate	57	56	63	91	104	96	77
Department Totals	57	56	63	91	104	96	77
Criminal Justice							
Undergraduate							
Criminal Justice BS	118	84	70	86	109	87	84
Total Undergraduate	118	84	70	86	109	87	84
Graduate							
Criminal Justice - Thesis MS	0	0	0	0	0	0	-
Criminal Justice MS	12	11	12	18	19	25	20
Total Graduate	12	11	12	18	19	25	20
Department Totals	130	95	82	104	128	112	64
Economics and Finance							
Undergraduate							
Economics BS	7	4	8	4	8	5	26
Finance BS	47	40	52	69	67	76	94
Total Undergraduate	54	44	60	73	75	81	120
Graduate							
Bus Admin: Economics-Finance							
MBA	14	5	6	7	5	0	0
Total Graduate	14	5	6	7	5	0	0
Department Totals	68	49	66	80	80	81	120

Undergraduate and Graduate Degrees Conferred: Academic Years 2005-2006 through 2011-2012

Academic Plan	Degree Year						
	2005-06	2006-07	2007-08	2008-09	2009-10	2010-11	2011-12
Geography							
Undergraduate							
Geography BA	11	5	9	13	9	4	4
Geography: Environmental BA							3
Geography-Urban/Regional PI BA	1	2	5	1	5	3	5
Geography-Geographic Analyses BA	3	1	5	1	1	1	4
Total Undergraduate	15	8	19	15	15	8	16
Graduate							
Geography MA	9	6	7	13	8	6	14
Regional Planning MSA	1	0	0	3	0	0	0
Total Graduate	10	6	7	16	8	6	14
Department Totals	25	14	26	31	23	14	30
Political Science							
Undergraduate							
Political Science-Applied Pub Policy BA	1	0	3	1	1	11	7
Political Science - Int'l Relations BA	18	10	14	19	17	22	16
Political Science BA	48	44	46	50	35	35	33
Social Studies: Geography BSED	0	0	0	0	0	0	-
Social Studies: Political Science BSED	0	0	0	0	0	0	-
Total Undergraduate	67	54	63	70	53	68	56
Graduate							
Human Resource Mgmt. MSA	4	6	0	0	0	0	-
Individualized Program MSA	3	2	3	4	1	0	0
Human Resource Mgmt. MPA	0	0	9	3	10	2	1
Public Administration MSA	1	5	5	0	4	0	0
Training & Developmental MSA	3	1	0	1	2	1	0
Nonprofit Administration MSA	0	0	0	1	5	0	1
Individualized Program MPA						1	0
Human Resource Mgmt. MPA						8	4
Public Administration MPA						13	25
Training & Development MPA						1	0
Nonprofit Administration MPA						3	2
Total Graduate	11	14	17	9	22	29	33
Department Totals	78	68	80	79	75	97	89

Undergraduate and Graduate Degrees Conferred: Academic Years 2005-2006 through 2011-2012

Academic Plan	Degree Year						
	2005-06	2006-07	2007-08	2008-09	2009-10	2010-11	2011-12
Management							
Undergraduate							
Business Management BS	125	132	109	136	124	130	134
Total Undergraduate	125	132	109	136	124	130	134
Graduate							
Bus Admin: General MBA	12	8	15	16	28	24	28
Bus Admin: Management MBA	10	15	5	1	1	1	0
Bus Admin: Executive MBA	0	0	0	0	1	0	0
Total Graduate	22	23	20	17	30	25	28
Department Totals	147	155	129	153	154	155	162
Marketing							
Undergraduate							
Marketing BS	92	89	74	112	95	98	100
Total Undergraduate	92	89	74	112	95	98	100
Graduate							
Bus Admin: Tech-Electronic MBA	5	4	4	1	1	1	0
Total Graduate	5	4	4	1	1	1	0
Department Totals	97	93	78	113	96	99	100
Social Work							
Undergraduate							
Social Work BSW	38	42	43	39	33	35	42
Total Undergraduate	38	42	43	39	33	35	42
Graduate							
Social Work MSW	37	32	40	30	29	34	38
Total Graduate	37	32	40	30	29	34	38
Department Totals	75	74	83	69	62	69	80
College of Business and Public Affairs Undergraduate Totals	566	509	501	622	608	607	629
College of Business and Public Affairs Graduate Totals	111	95	106	98	114	120	133
College of Business and Public Affairs Totals	677	604	607	720	722	727	762

Undergraduate and Graduate Degrees Conferred: Academic Years 2005-2006 through 2011-2012

Academic Plan	Degree Year						
	2005-06	2006-07	2007-08	2008-09	2009-10	2010-11	2011-2012
College of Education							
Counseling and Educational Psychology							
Graduate							
Counseling: Elementary MED	14	16	18	26	16	15	24
Counseling: Secondary MED	26	29	32	32	32	44	43
Counseling: Higher Ed/Stu Affairs MS	31	23	27	16	18	14	18
Total Graduate	71	68	77	74	66	73	85
Department Totals	71	68	77	74	66	73	85
Early Childhood and Special Education							
Undergraduate							
Early Childhood Education BSED	48	38	37	44	49	17	0
Special Education BSED	50	52	62	73	83	50	99
Total Undergraduate	98	90	99	117	132	67	99
Graduate							
Special Education MED	22	20	30	21	23	32	23
Early Childhood Education MED	0	2	2	17	22	0	0
Total Graduate	22	22	32	38	45	32	23
Department Totals	120	112	131	155	177	99	153
Elementary Education							
Undergraduate							
Early Childhood BSED						21	58
Elementary Education BSED	235	267	214	234	243	253	300
Total Undergraduate	235	267	214	234	243	274	358
Graduate							
Early Childhood Education MED						23	21
Elementary Education MED	26	33	40	36	35	34	12
Total Graduate	26	33	40	36	35	57	33
Department Totals	261	300	254	270	278	331	391
Literacy							
Graduate							
Reading MED	40	56	40	42	54	49	67
Total Graduate	40	56	40	42	54	49	67
Department Totals	40	56	40	42	54	49	67

Undergraduate and Graduate Degrees Conferred: Academic Years 2005-2006 through 2011-2012

Academic Plan	Degree Year						
	2005-06	2006-07	2007-08	2008-09	2009-10	2010-11	2011-12
Professional and Secondary Education							
Graduate							
Secondary Education MED	14	14	16	29	11	13	14
Educational Research MS	0	4	1	0	0	0	-
Total Graduate	14	18	17	29	11	13	14
Department Totals	14	18	17	29	11	13	14
College of Education Undergraduate Totals	333	357	313	351	375	341	457
College of Education Graduate Totals	173	197	206	219	211	224	222
College of Education Totals	506	554	519	570	586	565	679
College of Health Sciences							
Health							
Undergraduate							
Public Health: Health Promotion BS	15	13	26	13	16	17	29
Public Health: Environmental BS	3	2	4	7	8	6	13
Nutrition and Dietetics BS	35	51	51	58	58	61	85
Health Science: General BS	11	10	11	7	10	12	11
Health Science: Respiratory Care BS	21	27	21	25	22	24	22
Total Undergraduate	85	103	113	110	114	120	160
Graduate							
Health: School Health MED	15	10	3	13	10	26	10
Public Health MPH: Community	21	44	26	29	29	23	32
Public Health MPH: Integrative					8	4	4
Public Health MPH: Administrative					4	5	13
Public Health MPH: Environment					6	4	5
Public Health MPH: Neutrition							2
Health: Environment Health MS	0	0	0	0	0	0	-
Health Services MSA	0	0	0	0	0	0	-
Health: Public Health MS	0	1	0	0	0	0	-
Total Graduate	36	55	29	42	57	62	66
Department Totals	121	158	142	152	171	182	226

Undergraduate and Graduate Degrees Conferred: Academic Years 2005-2006 through 2011-2012

Academic Plan	Degree Year						
	2005-06	2006-07	2007-08	2008-09	2009-10	2010-11	2011-12
<i>Kinesiology</i>							
Undergraduate							
Health & Physical Education BS	73	86	82	96	90	85	87
Pre-Physical Therapy BS	0	0	0	0	3	14	16
Pre-Occupational Therapy BS							5
Exercise Science Specialist BS	31	40	21	43	47	43	43
Total Undergraduate	104	126	103	139	140	156	151
Graduate							
Hlth & Phys Ed: Exercise Phys MS	3	3	5	9	8	6	7
Sport & Athletic Admin MPA	17	14	8	14	14	3	1
MS in Physical Education	1	1	0	2	0	0	0
Total Graduate	21	18	13	25	22	9	8
Department Totals	125	144	116	164	162	165	159
<i>Nursing</i>							
Undergraduate							
Nursing BSN	82	84	65	62	61	97	108
RN to BSN	0	5	25	31	40	51	71
Total Undergraduate	82	89	90	93	101	148	179
Graduate							
Nursing - Education MSN	2	4	10	4	2	0	10
Nursing MSN	10	8	9	8	5	14	1
Total Graduate	12	12	19	12	7	14	11
Department Totals	94	101	109	105	108	162	190
<i>Sports Medicine</i>							
Undergraduate							
Athletic Training BS	29	18	17	26	30	24	35
Total Undergraduate	29	18	17	26	30	24	35
Department Totals	29	18	17	26	30	24	35

Undergraduate and Graduate Degrees Conferred: Academic Years 2005-2006 through 2011-2012

Academic Plan	Degree Year						
	2005-06	2006-07	2007-08	2008-09	2009-10	2010-11	2011-12
Communicative Disorders							
Undergraduate							
Communicative Disorders BA	19	30	30	38	39	51	41
Total Undergraduate	19	30	30	38	39	51	41
Graduate							
Communicative Disorders MA	25	25	31	27	25	31	32
Total Graduate	25	25	31	27	25	31	32
Department Totals	44	55	61	65	64	82	73
College of Health Sciences Undergraduate Totals	319	366	353	406	424	499	566
College of Health Sciences Graduate Totals	94	110	92	106	111	116	117
College of Health Sciences Totals	413	476	445	512	535	615	683
College of Visual and Performing Arts							
Applied Music							
Undergraduate							
Music: Performance Instrument						5	13
Music: Performance Jazz BM						0	3
Music: Performance Voice BM						2	4
Music: Performance Keyboard BM		9	7	12	11	2	1
Total Undergraduate		9	7	12	11	9	21
Graduate							
Music: Piano Pedagogy MM		1	3	2	4	1	4
Music Performance MM		5	6	4	8	11	10
Total Graduate		6	9	6	12	12	14
Department Totals		15	16	18	23	21	35
Art							
Undergraduate							
Studio Arts BA		3	6	1	1	2	0
Studio Arts BFA		63	62	46	70	41	35
Total Undergraduate		66	68	47	71	43	35
Department Totals		66	68	47	71	43	35

Undergraduate and Graduate Degrees Conferred: Academic Years 2005-2006 through 2011-2012

Academic Plan	Degree Year						
	2005-06	2006-07	2007-08	2008-09	2009-10	2010-11	2011-12
<i>Instrumental Music</i>							
Undergraduate							
Music: Instrument Perform BM	0	0	0	0	0	0	-
Total Undergraduate	0	0	0	0	0	0	-
Department Totals	0	0	0	0	0	0	-
<i>Music History</i>							
Graduate							
Music History MA	2	1	1	0	1	1	0
Total Graduate	2	1	1	0	1	1	0
Department Totals	2	1	1	0	1	1	0
<i>Music Theory and Composition</i>							
Undergraduate							
Music: Elective Studies BM	16	17	10	7	9	5	14
Music: Composition BM	1	0	0	0	0	0	0
Music: Theory BM	0	0	0	0	0	0	0
Music: Theory and Composition BM	2	1	2	7	3	6	1
Total Undergraduate	19	18	12	14	12	11	15
Graduate							
Music: Composition MM	0	0	1	0	1	0	0
Music: Music Theory MM	0	1	2	0	0	0	-
Music: Theory & Composition MM	0	0	0	0	1	0	0
Total Graduate	0	1	3	0	2	0	0
Department Totals	19	19	15	14	14	11	15

Undergraduate and Graduate Degrees Conferred: Academic Years 2005-2006 through 2011-2012

Academic Plan	Degree Year						
	2005-06	2006-07	2007-08	2008-09	2009-10	2010-11	2011-12
Music Education							
Undergraduate							
Music Education: Instrument BM	24	20	38	38	30	31	42
Music Education: Voice BM	14	13	8	15	24	11	22
Music Education: Keyboard BM	3	8	3	6	7	3	5
Total Undergraduate	41	41	49	59	61	45	69
Graduate							
Music Education MM - Performance	6	15	10	18	15	10	7
Music Education MM-Technology	0	1	1	2	3	1	5
Music Education MM: Research						2	1
Total Graduate	6	16	11	20	18	13	13
Department Totals	47	57	60	79	79	58	82
Theatre Arts							
Undergraduate							
Theatre Arts: Performance BA	7	1	5	6	2	3	6
Theatre Arts: Music Theatre BA	2	2	7	7	4	10	4
Theatre Arts: Tech Production BA	4	3	2	3	5	6	1
Theatre Arts: General BA	5	6	1	4	6	7	6
Theatre Arts: Dance BA							1
Total Undergraduate	18	12	15	20	17	26	18
Department Totals	18	12	15	20	17	26	18
<i>College of Visual and Performing Arts Undergraduate Totals</i>	153	146	135	175	145	134	158
<i>College of Visual and Performing Arts Graduate Totals</i>	14	27	21	32	28	26	27
<i>College of Visual and Performing Arts Totals</i>	167	173	156	207	170	160	185
<i>University Undergraduate Totals</i>	2,166	2,160	2,114	2,552	2,422	2,565	2,860
<i>University Graduate Totals</i>	523	579	575	617	631	656	645
<i>University Totals</i>	2,689	2,739	2,689	3,169	3,053	3,221	3,505



TUTION & FEES

Tuition and Fees by Semester

	2007	2008	2009	2010	2011	2012
Undergraduate Tuition						
Full-Time In-State	\$2,588.50	\$2,679	\$2,777	\$2,902	\$3,120	\$3,214
Full-Time Out-of-State	\$6,472	\$6,698	\$6,943	\$7,255	\$7,800	\$8,035
Per Credit In-State	\$216	\$230	\$231	\$242	\$260	\$268
Per Credit Out-of-State	\$539	\$558	\$579	\$605	\$650	\$670
Undergraduate Fees						
Full-Time In-State	\$583	\$599	\$725.70	\$937.85*	\$938.65*	\$1,096.05
Full-Time Out-of-State				\$996.85*	\$1,027.65*	\$1,188.05
Per Credit In-State	\$49	\$50	\$60.18	\$129.92**	\$157.72**	\$91.41
Per Credit Out-of-State				\$154.92**	\$165.72**	\$99.41
Graduate Tuition						
Full-Time In-State	\$3,107	\$3,215	\$3,333	\$3,483	\$3,744	\$3,861
Full-Time Out-of-State	\$4,972	\$5,144	\$5,333	\$5,573	\$5,616	\$5,796
Per Credit In-State	\$345	\$357	\$370	\$387	\$416	\$429
Per Credit Out-of-State	\$552	\$572	\$593	\$619	\$624	\$644
Graduate Fees						
Full-Time In-State	\$500	\$500	\$664.35	\$807.20	\$892.32	\$1,054.40
Full-Time Out-of-State				\$866.20	\$982.32	\$1,144.40
Per Credit In-State	\$57	\$50	\$62.56	\$214.02	\$100.37	\$105.05
Per Credit Out-of-State				\$158.24	\$110.37	\$115.05
Residence Halls						
Meal Plan*	\$1,019	\$1,114	\$1,170	\$1,189	\$1,218	\$1,247

*14 Meals per week



LIBRARY RESOURCES

Library

FY 2009-2010 through 2011-2012

	2009-2010	2010-2011	2011-2012	One Year Difference
Library Holdings				
Volumes	759,510	760,962	759,153	-1,452
Microforms	926,368	926,498	926,451	-47
E-Books	588,313	640,761	643,370	2,609
Audio/Video units*	140,044**	140,289***	199,454	59,165
Circulation (General & Reserve)	100,669	76,977	64,373	-12,604
Total FTE Staff (includes student assistants)	55.67	55.10	45.92	-9.18

*Includes tapes, CDs, DVDs

**Includes 79,820 streaming audio and video albums/titles

***Includes 77,295 streaming audio and video albums/titles

For questions /comments or recommendations for other data to include in the Fact Book, please contact Nilima Inamdar, Office of Institutional Research, WCU, 887, Matlack Street, West Chester PA 19381. Email: ninamdar@wcupa.edu Phone: 610-436-2456