

FACT BOOK 2020

WEST CHESTER UNIVERSITY OF PENNSYLVANIA

West Chester University of Pennsylvania Office of Institutional Research

**887 South Matlack Street
West Chester, PA 19383
Telephone (610) 436-2835**

Fax (610) 436-2635

Introduction & Acknowledgements

This Fact Book provides some of the most commonly requested information about West Chester University. Much of the information is drawn from the University's database and state mandated reports. Other offices and sources used are cited throughout the document. The cooperation of those offices and sources is much appreciated.

The Fact Book is divided into several chapters: Admissions, Enrollment, Retention/Graduation Rates, Academic Degree Programs & Accredited Programs, Graduation/Degree Information, and Resources (including financial aid), Services and Facilities.

Comments and suggestions about additional information that might be included are much appreciated. Please forward your suggestions to ninamdar@wcupa.edu.

Additional institutional information is available on our website: <http://www.wcupa.edu/infoservices/oir/>

Table of Contents

Table of Contents	2-3
WCU Quick Facts	4
GENERAL INFORMATION	
Statement of Mission and Goals	6-8
West Chester University Organizational Chart	9
ADMISSIONS	
Undergraduate Admissions Standards	11
Admission Application Statistics	12-13
First Time, Full-Time, First Year by Gender and Race/Ethnicity	14
First Time, Full-Time, First Year by Admission Type	15
Feeder High Schools: Fall 2020	16
Feeder Colleges: Fall 2020	17
First Time, Full-Time, First Year Enrollment by County	18
First Time, Full-Time, First Year Enrollment by State	19
First Time, First Year Admission Yield Statistics	20
First Time, First Year Admission Yield Chart	21
First Time Transfer Admission Yield Statistics	22
First Time Transfer Admission Yield Chart	23
ENROLLMENT	
Head Count Enrollment by Gender and Race/Ethnicity	25
Head Count Enrollment by Degree Status and College Fall 2020	26
Head Count Enrollment by State: Fall 2016 to 2020	27-28
Enrollment by County for Pennsylvania Residents: Fall 2020	29
Head Count Enrollment by Ethnicity and Gender Fall 2015 to Fall 2020	30

To be continued.....

Table of Contents (continued)

ENROLLMENT (continued)	
Head Count Enrollment by College: Fall 2015 to Fall 2020	31-32
Head Count Enrollment by Student Level: Fall 2014 to 2020	33-34
Credit Hours and Student FTE Enrollment	35
RETENTION AND GRADUATION	
Retention & Graduation Rates for First-Time, Full-Time First Year: University Summary	37
Retention & Graduation Rates for First-Time, Full-Time First Year Student Cohorts by Gender	38
ACADEMIC AND DEGREE PROGRAMS	
Undergraduate Degrees and Certificate Programs	40-41
Graduate Degrees and Certificate Programs	42-43
Professional and Program Accreditations	44-45
DEGREES CONFERRED	
Undergraduate and Graduate Degrees Conferred by College and Academic Plan	47-62
RESOURCES, SERVICES & FACILITIES	
Tuition and Fees	65
Library Resources	67
Faculty, Staff and Administration	
Total University Employees by Employment Status and Gender: Fall 2019	69
Total University Employees by Race/Ethnicity by Gender: Fall 2019	70
Instructional Faculty by Tenure Status and Gender: Fall 2019	71
Instructional Faculty by Tenure Status by Race/Ethnicity: Fall 2019	72
Total Staff/Administration Employees by Gender and Race/Ethnicity: Fall 2019	73

Quick Facts

West Chester University
West Chester, PA 19383
Telephone (610) 436-1000
<http://www.wcupa.edu/>

Founded	1871
President	Christopher M. Fiorentino
University Accreditation	Middle States Commission on Higher Education
Fall 2020 Enrollment*	17,719
Undergraduate	14,712
Graduate	3,007
Fall 2019 Credit Hours	230,222.5
Undergraduate	209,236.5
Graduate	20,986.0
Undergraduate Degree Programs	50
Graduate Degree Programs	46
Master's Programs	42
Doctoral Programs	4
Certificate Programs	47
Degrees Awarded in 2019-20 (IPEDS)	4,463
Bachelor's	3,388
Postbaccalaureate Certificate	334
Master's	1,043
Post-master's Certificate	8
Doctoral	32

*Represent IPEDS unduplicated total headcount.

Degree and Certificate program counts displayed above include only those programs which are offered to incoming new students.



General Information

Statement of Mission and Goals

West Chester University is a community of educators that develops graduates to succeed personally and professionally and contribute to the common good.

WCU GRADUATES WILL:

- Apply scientific reasoning and demonstrate quantitative and qualitative literacy
- Collaborate with others to solve problems and address societal needs
- Communicate effectively and participate in civic discourse
- Engage inclusively in a diverse society
- Understand the ethical implications of decisions and the world in which they live

INSTITUTIONAL GOALS:

To fulfill its mission as a public institution serving the Commonwealth, West Chester University will focus on student success and institutional improvement as measured by the degree to which WCU demonstrates:

- Access to learning
- Community and cultural engagement
- Continuous improvement
- Critical thinking
- Inclusion
- Scholarly and creative activities
- Sustainability

About West Chester University of Pennsylvania

West Chester University offers bachelors and masters degrees in the arts and sciences, teacher training and certification, advanced study preparation in fields such as medicine and law, education for specific professions, and continuing education.

Total enrollment at West Chester University includes 14,712 undergraduate students and 3,007 graduate students. This represents the IPEDS unduplicated headcount. While most undergraduates are recent high school graduates preparing for career objectives, many others are older individuals, including veterans and homemakers, who either never before had the opportunity for a college education or whose schooling was interrupted.

Most students are residents of Pennsylvania but students from other states and foreign countries are welcome. The student body at West Chester University represents a cross section of many ethnic, racial, and religious groups and includes students from all socioeconomic levels.

Like the world around it, West Chester University is constantly transforming. The school continues to broaden and modify the nature and number of its programs to reflect the needs of its students in their endeavor to prepare themselves for success and fulfillment in life.

The History of West Chester University of Pennsylvania

Founded in 1871, West Chester University began as West Chester Academy, a private, state-aided school that existed from 1812 to 1869. The academy enjoyed strong support from the highly intellectual Chester County Cabinet of the Natural Sciences of the pre-Civil War decades. It was recognized as one of Pennsylvania's leading preparatory schools, and its experience in teacher training laid the groundwork for the normal school years that were to follow.

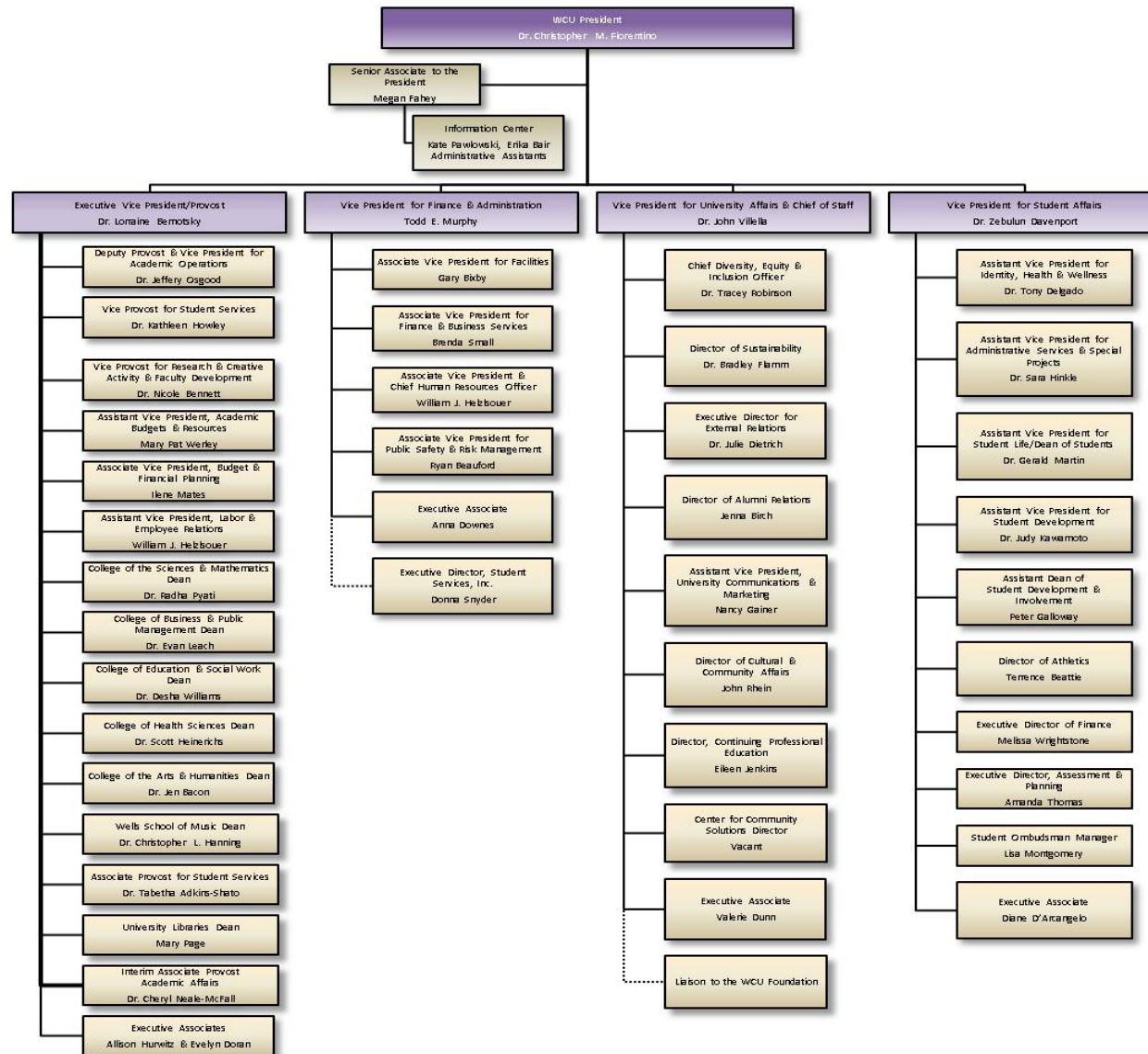
As the state began to take increasing responsibility for public education, the academy was transformed into West Chester Normal School, still privately owned but state certified. The normal school admitted its first class, consisting of 160 students, on September 25, 1871. In 1913, West Chester became the first of the normal schools to be owned outright by the Commonwealth.

West Chester became West Chester State Teachers College in 1927 when Pennsylvania initiated a four-year program of teacher education. In 1960, as the Commonwealth paved the way for liberal arts programs in its college system, West Chester was renamed West Chester State College, and two years later introduced the liberal arts program that turned the one-time academy into a comprehensive college.

In recognition of the historic merit of the campus, in 1981 the West Chester State College Quadrangle Historic District was placed on the National Register of Historic Places. The buildings included in this historic district are Philips Memorial Building, Ruby Jones Hall, Recitation Hall, and the Old Library. Except for Philips, these buildings are all constructed of native Chester County serpentine stone.

West Chester State achieved another major milestone with passage of the State System of Higher Education bill. West Chester became one of the 14 universities in the State System of Higher Education on July 1, 1983. Along with its new name -- West Chester University of Pennsylvania of the State System of Higher Education -- the institution acquired a new system of governance and the opportunity to expand its degree programs.

Organizational Chart





ADMISSIONS

Undergraduate Admissions Standards

West Chester University prides itself on the holistic approach used in evaluating applicant credentials. Each application is reviewed individually, and we carefully consider scholastic performance and academic preparation to determine an individual's potential for success.

For general admission, as a first-year student, the Office of Admissions requires successful completion of a college preparatory curriculum in high school. Honors and AP level courses are preferred. The academic profile of the first year students who enrolled at West Chester University in Fall 2020 is a mean SAT combined score of 1,099 and mean ACT score of 23 (scores used for Admission Decision), a rank in the 64th percentile or top 36%, and a grade point average of 3.4.

Applicants who do not meet regular admissions standards may be considered for a special admissions program if appropriate or denied admission and counseled to enroll at another college or university for a minimum of 24 credits before reapplying as a transfer student.

Transfer applicants must have a minimum grade point average of 2.00 for admissions consideration. The majority of our transfers have a Cumulative GPA of 2.50 or better prior to transferring to the University. Some of our academic programs require a higher grade point average and specific course prerequisites. Pennsylvania Community College students who have earned an Associate of Arts or Associate of Science degree and students who have completed 12 or more transferable credits from a State System University with a 2.00 or above have an Academic Passport that provides entry into any university in the State System of Higher Education. For more information on admissions requirements and the Academic Passport, please contact the Office Admissions at (610) 436-3411 or e-mail ugadmiss@wcupa.edu.

Admission Application Statistics for First Time, First Year Students Fall 2020

Race/Ethnicity	Fall 2019			Fall 2020			Total	
	Male	Female	Total	Male	Female	Total	Change	% Change
African American								
Applied	744	1,416	2,160	647	1,258	1,905	-255	-11.81%
Accepted	341	719	1,060	388	888	1,276	216	20.38%
Enrolled	104	177	281	84	167	251	-30	-10.68%
Asian								
Applied	213	371	584	208	394	602	18	3.08%
Accepted	156	289	445	181	372	553	108	24.27%
Enrolled	30	37	67	27	45	72	5	7.46%
White								
Applied	3,655	6,321	9,976	3,574	6,050	9,624	-352	-3.53%
Accepted	2,894	5,285	8,179	3,164	5,570	8,734	555	6.79%
Enrolled	828	1,283	2,111	826	1,294	2,120	9	0.43%
Hawaiian/Pacific Islander								
Applied	3	5	8	1	0	1	-7	-87.50%
Accepted	2	4	6	1	0	1	-5	-83.33%
Enrolled	2	1	3	1	0	1	-2	-
Hispanic or Latino								
Applied	401	935	1,336	402	847	1,249	-87	-6.51%
Accepted	257	645	902	301	704	1,005	103	11.42%
Enrolled	72	134	206	56	122	178	-28	-13.59%
Multiracial								
Applied	195	367	562	187	338	525	-37	-6.58%
Accepted	141	263	404	141	283	424	20	4.95%
Enrolled	45	64	109	46	58	104	-5	-4.59%
Native American								
Applied	8	5	13	5	11	16	3	23.08%
Accepted	6	5	11	3	11	14	3	27.27%
Enrolled	2	0	2	3	5	8	6	300.00%

to be continued.....

These headcounts are unduplicated and reflect the IPEDS unduplicated headcount.

Admission Application Statistics for First Time, First Year, Students: Fall 2020 (continued)

Race/Ethnicity	Fall 2019			Fall 2020			Total	
	Male	Female	Total	Male	Female	Total	Change	%Change
Non-Resident Alien								
Applied	11	17	28	15	22	37	9	32.14%
Accepted	8	17	25	7	13	20	-5	-20.00%
Enrolled	0	2	2	1	1	2	0	0.00%
Not Supplied								
Applied	167	251	418	123	158	281	-137	-32.78%
Accepted	127	197	324	109	145	254	-70	-21.60%
Enrolled	32	58	90	33	27	60	-30	-33.33%
Total								
Applied	5,397	9,688	15,085	5,162	9,078	14,240	-845	-5.60%
Accepted	3,932	7,424	11,356	4,295	7,986	12,281	925	8.15%
Enrolled	1,115	1,756	2,871	1,077	1,719	2,796	-75	-2.61%

These headcounts are unduplicated and reflect the IPEDS unduplicated headcount.

First Time, First Year, Full-Time Enrolled Students by Gender and Race/Ethnicity

Race/Ethnicity	Fall 2019			Fall 2020			Total	
	Male	Female	Total	Male	Female	Total	Change	% Change
African American	103	177	280	82	165	247	-33	-11.79%
Asian	30	37	67	27	45	72	5	7.46%
White	824	1,280	2,104	813	1,288	2,101	-3	-0.14%
Hawaiian/Pacific Islander	2	1	3	1	0	1	-2	-
Hispanic or Latino	71	132	203	55	121	176	-27	-13.30%
Multiracial	45	64	109	44	57	101	-8	-7.34%
Native American	2	0	2	3	5	8	6	300.00%
Non-Resident Alien	0	2	2	1	1	2	0	0.00%
Not Supplied	32	58	90	31	26	57	-33	-36.67%
Total	1,109	1,751	2,860	1,057	1,708	2,765	-95	-3.32%

These headcounts are unduplicated and reflect the IPEDS unduplicated headcount.

First Time, First Year, Full-Time Students by Admission Type

Admittance Type	2016		2017		2018		2019		2020	
	N	%	N	%	N	%	N	%	N	%
Regular	1,961	80.3%	2,102	80.2%	2,225	80.3%	2,107	73.7%	2,429	87.8%
ADP ACT 101	69	2.8%	64	2.4%	61	2.2%	58	2.0%	52	1.9%
ADP Non-ACT 101	123	5.0%	116	4.4%	116	4.2%	130	4.5%	101	3.7%
Special Admission	288	11.8%	338	12.9%	369	13.3%	565	19.8%	183	6.6%
Total	2,441		2,620		2,771		2,860		2,765	

These headcounts are unduplicated and reflect the IPEDS unduplicated headcount.

Feeder High Schools: Fall 2020

Pennsylvania High Schools With the Highest Number of First Time, First Year Students

School	#
Spring-Ford Senior High School	54
Central Bucks High School South	50
West Chester Bayard Rustin Hs	47
Springfield High School	44
Garnet Valley High School	39
West Chester East High School	37
Unionville High School	37
Upper Darby High School	35
Downingtown West	33
B Reed Henderson High School	32
Marple Newtown High School	32
Souderton Area High School	30
Owen J. Roberts High School	30
North Penn High School	28
Downingtown High School East	28
Coatesville Area Senior Hs	27
Upper Merion Area High School	26
Cardinal O'Hara High School	25
Methacton High School	24
Pennsbury High School	24
Avon Grove High School	24
Boyertown Area Senior Hs	23
Central Bucks High School East	23
Haverford High School	23
Ridley High School	23

School	#
Perkiomen Valley High School	23
Council Rock High School South	22
Kennett High School	21
Daniel Boone Area High School	21
Central Bucks High School West	20
Plymouth Whitemarsh Hs	20
Penncrest High School	20
Hempfield High School	20
Conestoga High School	19
Twin Valley High School	19
Bishop Shanahan High School	19
Manheim Township High School	19
Neshaminy High School	19
Lansdale Catholic High School	18
Sun Valley High School	17
Archbishop Carroll High School	17
Oxford Area High School	17
Central Dauphin High School	17
Chichester High School	16
Wilson High School	16
Parkland High School	16
Great Valley High School	16
Hatboro-Horsham High School	15
William Tennent High School	15
Cumberland Valley High School	15

School	#
Upper Moreland High School	15
Quakertown Community Senior Hs	15
Pope John Paul II High School	15
Phoenixville Area High School	15
Lower Moreland High School	14
Central High School	14
Emmaus High School	14
Archbishop Wood High School	13
Franklin Towne Charter Hs	13
Abington High School	12
Exeter Township Senior Hs	12
Norristown Area High School	12
Wissahickon High School	11
Dunmore Junior-Senior Hs	11
Berks Catholic High School	11
John W Hallahan Catholic Hs	11
Cheltenham High School	11
Saint John Vianney High Sch	10
Southern Lehigh High School	10
Northwestern Lehigh Hs	10
Upper Dublin High School	10
Bensalem High School	10

These headcounts are unduplicated and reflect the IPEDS unduplicated headcount.

Feeder Colleges: Fall 2020

Institutions Previously Attended With the Highest Number of New Fall Undergraduate Transfer Students

[Excludes students who transitioned from non-degree to degree as well as Transfers with first degree at WCU]

Name	Count	Percent	Type	State
Delaware County Community College	355	31.6%	2 Year Public	PA
Montgomery County Community College	109	9.7%	2 Year Public	PA
Community College of Philadelphia	99	8.8%	2 Year Public	PA
Bucks County Community College	61	5.4%	2 Year Public	PA
Pennsylvania State University	34	3.0%	4 Year Public	PA
Harrisburg Area Community College	29	2.6%	2 Year Public	PA
Temple University	26	2.3%	4 Year Public	PA
Northampton County Area Community College	20	1.8%	2 Year Public	PA
Millersville University of Pennsylvania	18	1.6%	4 Year Public	PA
Indiana University of Pennsylvania	14	1.2%	4 Year Public	PA
Drexel University	12	1.1%	4 Year Private	PA
Harcum College	11	1.0%	2 Year Private	PA
Lehigh Carbon Community College	10	0.9%	2 Year Public	PA
Shippensburg University of Pennsylvania	10	0.9%	4 Year Public	PA
Reading Area Community College	9	0.8%	2 Year Public	PA
Bloomsburg University of Pennsylvania	8	0.7%	4 Year Public	PA
Widener University	8	0.7%	4 Year Private	PA
University of Pittsburgh Pittsburgh*	8	0.7%	4 Year Public	PA
California University of PA	6	0.5%	4 Year Public	PA
Kutztown University of Pennsylvania	6	0.5%	4 Year Public	PA
Delaware Technical Community College Newark	5	0.4%	Community College	DE
Immaculata University	5	0.4%	4 Years Private	PA
La Salle University	5	0.4%	4 Year Private	PA
Ursinus University	5	0.4%	4 Year Private	PA

These headcounts are unduplicated and reflect the IPEDS unduplicated headcount.

Percentage is calculated out of total New Transferred enrolled in Fall 2020, excluding students who transitioned from non-degree to degree as well as Transfers with first degree at WCU.

First Time, First Year, Full-Time Student Enrollment by Pennsylvania County: Fall 2020

Top 10 Counties* with Most Enrollments Ranked

County	Total	Percent	Rank
Adams	18	0.65%	
Allegheny	8	0.29%	
Armstrong	0	0.00%	
Beaver	0	0.00%	
Bedford	0	0.00%	
Berks	109	3.94%	6
Blair	0	0.00%	
Bradford	2	0.07%	
Bucks	255	9.22%	4
Butler	0	0.00%	
Cambria	0	0.00%	
Cameron	0	0.00%	
Carbon	6	0.22%	
Centre	1	0.04%	
Chester	466	16.85%	1
Clarion	0	0.00%	
Clearfield	0	0.00%	
Clinton	2	0.07%	
Columbia	2	0.07%	
Crawford	0	0.00%	
Cumberland	41	1.48%	
Dauphin	50	1.81%	10
Delaware	358	12.95%	3

County	Total	Percent	Rank
Elk	0	0.00%	
Erie	0	0.00%	
Fayette	0	0.00%	
Franklin	5	0.18%	
Fulton	0	0.00%	
Greene	0	0.00%	
Huntingdon	0	0.00%	
Indiana	0	0.00%	
Jefferson	0	0.00%	
Juniata	0	0.00%	
Lackawanna	44	1.59%	
Lancaster	88	3.18%	7
Lawrence	0	0.00%	
Lebanon	25	0.90%	
Lehigh	68	2.46%	8
Luzern	33	1.19%	
Lycoming	1	0.04%	
McKean	0	0.00%	
Mercer	0	0.00%	
Mifflin	0	0.00%	
Monroe	25	0.90%	
Montgomery	409	14.79%	2
Montour	0	0.00%	

County	Total	Percent	Rank
Northampton	53	1.92%	9
Northumberland	7	0.25%	
Perry	4	0.14%	
Philadelphia	233	8.43%	5
Pike	6	0.22%	
Potter	1	0.04%	
Schuylkill	15	0.54%	
Snyder	3	0.11%	
Somerset	1	0.04%	
Sullivan	0	0.00%	
Susquehanna	4	0.14%	
Tioga	2	0.07%	
Union	5	0.18%	
Venango	0	0.00%	
Warren	0	0.00%	
Washington	0	0.00%	
Wayne	7	0.25%	
Westmoreland	0	0.00%	
Wyoming	6	0.22%	
York	44	1.59%	
Out of State	356	12.88%	
Out of Country	2	0.07%	
Total	2,765	100.00%	

*County at the time of admission.

These headcounts are unduplicated and reflect the IPEDS unduplicated headcount.

First Time, First Year, Full-Time Student Enrollment by State: Fall 2020

Top 10 States* with Most Enrollments Ranked

State	Total	Percent	Rank
Alabama	0	0.00%	
Alaska	0	0.00%	
Arizona	0	0.00%	
Arkansas	0	0.00%	
California	0	0.00%	
Colorado	0	0.00%	
Connecticut	2	0.07%	7(t)
Delaware	40	1.45%	3
District of Columbia	0	0.00%	
Florida	2	0.07%	7(t)
Georgia	0	0.00%	
Hawaii	0	0.00%	
Idaho	0	0.00%	
Illinois	1	0.04%	8(t)
Indiana	0	0.00%	
Iowa	0	0.00%	
Kansas	0	0.00%	
Kentucky	0	0.00%	
Louisiana	0	0.00%	
Maine	0	0.00%	
Maryland	17	0.61%	4(t)
Massachusetts	3	0.11%	6(t)
Michigan	0	0.00%	
Minnesota	0	0.00%	
Mississippi	0	0.00%	
Missouri	0	0.00%	
Montana	0	0.00%	
Nebraska	0	0.00%	

State	Total	Percent	Rank
Nevada	0	0.00%	
New Hampshire	0	0.00%	
New Jersey	266	9.62%	2
New Mexico	0	0.00%	
New York	17	0.61%	4(t)
North Carolina	0	0.00%	
North Dakota	0	0.00%	
Ohio	0	0.00%	
Oklahoma	0	0.00%	
Oregon	0	0.00%	
Pennsylvania	2,407	87.05%	1
Rhode Island	1	0.04%	8(t)
South Carolina	0	0.00%	
South Dakota	0	0.00%	
Tennessee	0	0.00%	
Texas	1	0.04%	8(t)
Utah	0	0.00%	
Vermont	0	0.00%	
Virginia	4	0.14%	5
Washington	0	0.00%	
West Virginia	0	0.00%	
Wisconsin	1	0.04%	8(t)
Wyoming	0	0.00%	
Armed Forces	0	0.00%	
International	1	0.04%	8(t)
Other/Unknown	2	0.07%	7(t)
Total	2,765	100.00%	

*State at the time of admission.

These headcounts are unduplicated and reflect the IPEDS unduplicated headcount.

Admission Yield Statistics

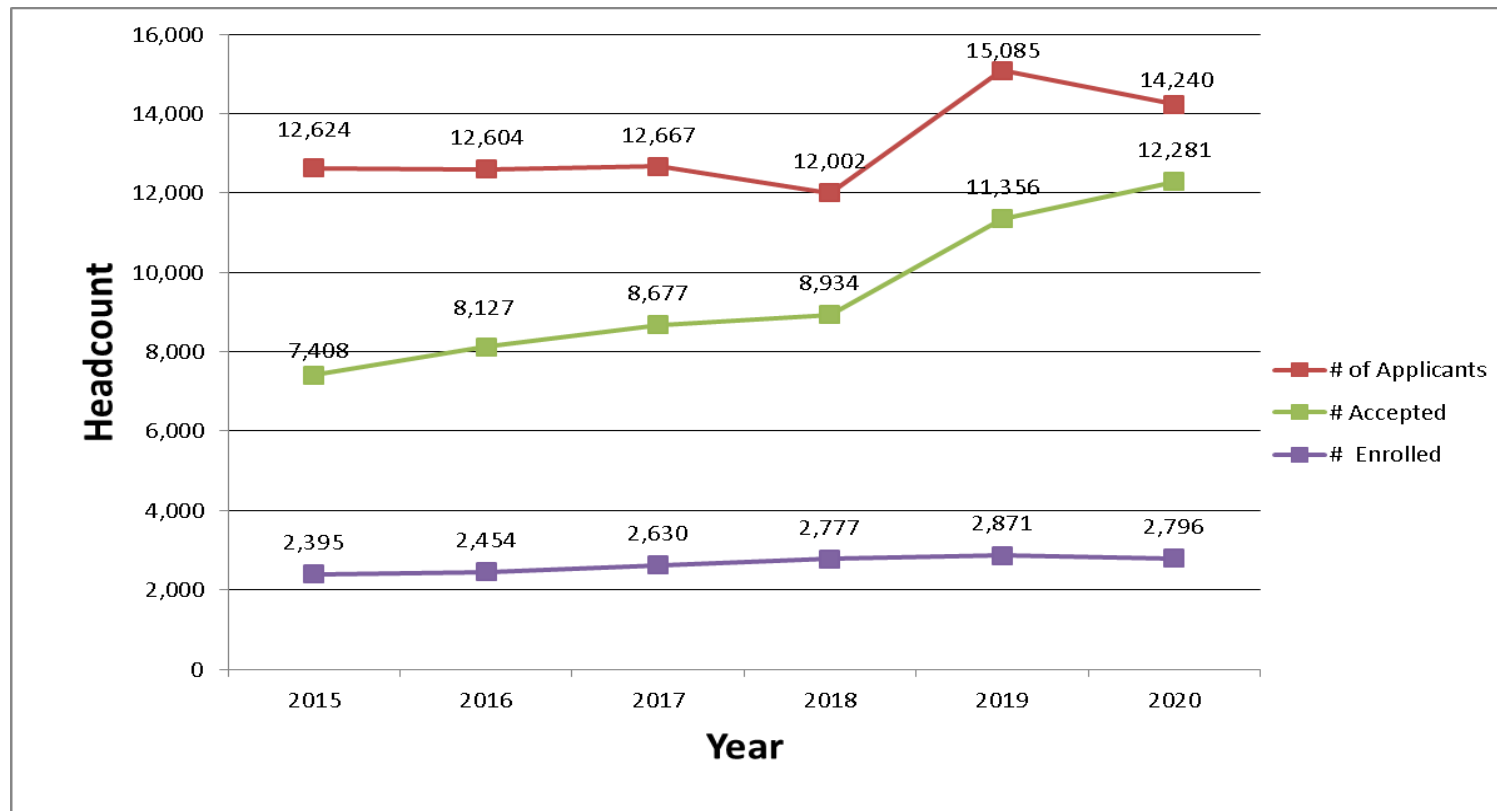
First-Time, First Year Student Admission Yield

Year	# of Applicants	# Accepted	% Accepted	# Enrolled	% Accepted Enrolled	% of Applicants Enrolled
2010	14,009	6,267	41.5	2,067	32.9	13.6
2011	14,097	7,013	46.5	2,292	32.6	15.1
2012	13,365	7,161	49.9	2,334	32.5	16.2
2013	13,438	6,922	51.5	2,298	33.1	17.1
2014*	13,291	7,108	53.5	2,351	33.0	17.6
2015*	12,624	7,408	58.7	2,395	32.3	19.0
2016*	12,604	8,127	64.5	2,454	30.2	19.5
2017*	12,667	8,677	68.5	2,630	30.3	20.8
2018*	12,002	8,934	74.5	2,777	31.1	23.1
2019*	15,085	11,356	75.3	2,871	25.3	19.0
2020*	14,240	12,281	86.2	2,796	22.8	19.6
5-YR Change	12.8%	65.8%		16.7%		
1-YR Change	-5.6%	8.1%		-2.6%		
5-YR Difference			27.57		-9.53	0.63
1-YR Difference			10.96		-2.51	0.60

*Starting Fall 2014, number of applicants includes completed applications only.

These headcounts are unduplicated and reflect the IPEDS unduplicated headcount.

First Time, First Year Student Admission Yield



Starting Fall 2014, number of applicants includes completed applications only.

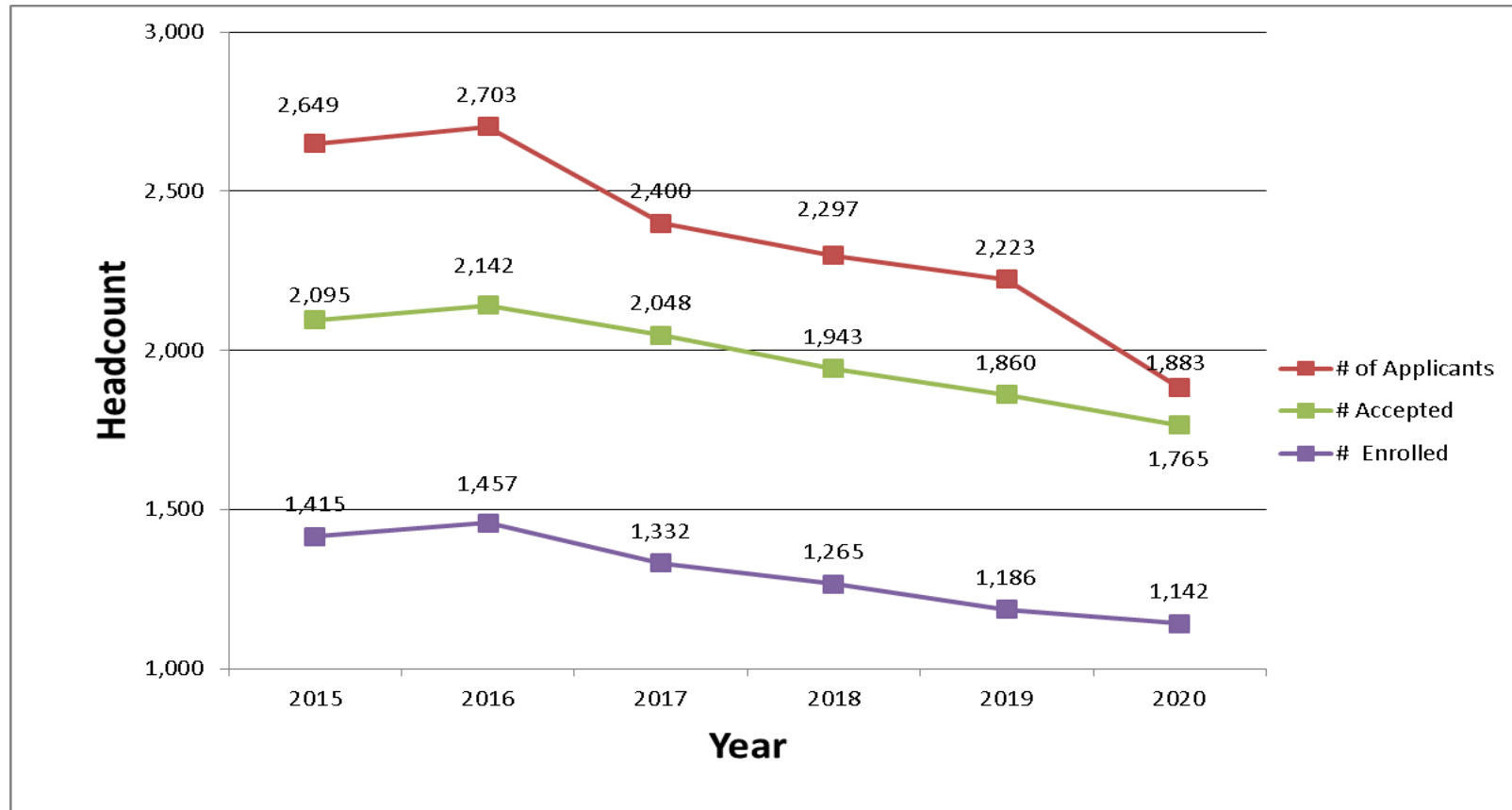
First Time Transfer Admission Yield

Year	# of Applicants	# Accepted	% Accepted	# Enrolled	% of Accepted Enrolled	% of Applicants Enrolled
2011	3,742	2,029	54.2	1,276	62.9	34.1
2012	3,678	2,057	55.9	1,316	64	35.8
2013	2,883	2,003	69.5	1,350	67.9	46.8
2014*	2,762	2,061	74.6	1,331	64.6	48.2
2015*	2,649	2,095	79.1	1,415	67.5	53.4
2016*	2,703	2,142	79.2	1,457	68.0	53.9
2017*	2,400	2,048	85.3	1,332	65.0	55.5
2018*	2,297	1,943	84.6	1,265	65.1	55.1
2019*	2,223	1,860	83.7	1,186	63.8	53.4
2020*	1,883	1,765	93.7	1,142	64.7	60.6
5-YR Change	-28.9%	-15.8%		-19.3%		
1-YR Change	-15.3%	-5.1%		-3.7%		
5-YR Difference			14.65		-2.84	7.23
1-YR Difference			10.06		0.94	7.30

*Starting Fall 2014, number of applicants includes completed applications only.

These headcounts are unduplicated and reflect the IPEDS unduplicated headcount.

First Time Transfer Admission Yield



Starting Fall 2014, number of applicants includes completed applications only.



ENROLLMENT

Head Count Enrollment by Gender and Race/Ethnicity: Fall 2020

Gender	Undergraduate		Graduate		Total
	Full-Time	Part-time	Full-Time	Part-time	
Male	5,164	714	301	651	6,830
Female	7,892	942	726	1,329	10,889
Total	13,056	1,656	1,027	1,980	17,719

Ethnicity	Undergraduate		Graduate		Total
	Full-Time	Part-time	Full-Time	Part-time	
African American	1,389	251	208	216	2,064
Native American	30	0	1	5	36
Asian	329	64	30	68	491
Caucasian	9,772	1,129	650	1,506	13,057
Hawaiian/Pacific Islander	8	0	2	0	10
Hispanic	769	91	59	84	1,003
Non-Resident Alien	31	2	25	16	74
Multiracial	476	68	24	45	613
Not Supplied	252	51	28	40	371
Total	13,056	1,656	1,027	1,980	17,719

These headcounts are unduplicated and reflect the IPEDS unduplicated headcount.

Head Count Enrollment by Degree Status and College: Fall 2020

Degree Status	Undergraduate		Graduate		Total
	Full-Time	Part-time	Full-Time	Part-time	
Degree Seeking	13,040	1,383	986	1,767	17,176
Non-degree Seeking	16	273	41	213	543
Total	13,056	1,656	1,027	1,980	17,719

College	Undergraduate		Graduate		Total
	Full-Time	Part-time	Full-Time	Part-time	
Arts & Humanities	1,387	138	47	126	1,698
Business and Public Management	3,652	333	171	753	4,909
Education & Social Work	1,574	102	414	630	2,720
Health Sciences	2,076	408	244	198	2,926
Science & Mathematics	2,745	278	125	193	3,341
University College	1,275	381	2	45	1,703
School of Music	347	16	24	35	422
Total	13,056	1,656	1,027	1,980	17,719

These headcounts are unduplicated and reflect IPEDS unduplicated headcount.

University College includes non-degree and undeclared major students.

Headcounts displayed are per the new organizational structure.

Enrollment by State at the Time of Admission: Fall 2017 to Fall 2020

State	Fall 2017			Fall 2018			Fall 2019			Fall 2020		
	UG	G	Total	UG	G	Total	UG	G	Total	UG	G	Total
Alabama	1	1	2	0	2	2	0	2	2	0	3	3
Alaska	1	0	1	0	0	0	0	0	0	0	1	1
Arizona	1	1	2	1	2	3	0	2	2	1	1	2
Arkansas	0	0	0	0	2	2	0	1	1	0	2	2
California	7	11	18	5	8	13	3	7	10	3	11	14
Colorado	1	0	1	2	1	3	3	2	5	2	6	8
Connecticut	6	4	10	7	5	12	5	3	8	5	5	10
Delaware	162	61	223	166	61	227	166	64	230	172	56	228
Florida	11	10	21	7	9	16	9	5	14	10	14	24
Georgia	2	5	7	3	8	11	2	7	9	1	12	13
Hawaii	1	0	1	0	0	0	0	0	0	0	0	0
Idaho	0	0	0	0	0	0	0	0	0	0	1	1
Illinois	1	3	4	3	4	7	2	1	3	3	5	8
Indiana	0	1	1	0	2	2	0	4	4	0	0	0
Iowa	0	0	0	0	0	0	0	1	1	0	2	2
Kansas	0	1	1	0	1	1	1	2	3	1	2	3
Kentucky	1	1	2	1	1	2	1	2	3	1	1	2
Louisiana	1	0	1	1	1	2	1	2	3	1	1	2
Maine	1	1	2	2	2	4	1	3	4	1	2	3
Maryland	80	29	109	70	27	97	68	21	89	65	23	88
Massachusetts	4	4	8	5	7	12	6	5	11	6	3	9
Michigan	2	0	2	2	1	3	2	4	6	2	3	5
Minnesota	0	3	3	0	1	1	1	1	2	0	2	2
Mississippi	0	0	0	0	0	0	0	0	0	0	0	0
Missouri	0	1	1	0	0	0	0	0	0	0	1	1
Montana	1	1	2	1	0	1	1	0	1	1	1	2
Nebraska	0	0	0	0	0	0	0	1	1	0	1	1
Nevada	1	0	1	1	0	1	0	0	0	1	1	2
New Hampshire	2	0	2	2	1	3	2	2	4	2	1	3

to be continued.....

These headcounts are unduplicated and reflect the IPEDS unduplicated headcount.

Enrollment by State at the Time of Admission: Fall 2017 to Fall 2020 (continued)

STATE	Fall 2017			Fall 2018			Fall 2019			Fall 2020		
	UG	G	Total	UG	G	Total	UG	G	Total	UG	G	Total
New Jersey	1,188	91	1,279	1,136	100	1,236	1,052	99	1,151	1,009	101	1,110
New Mexico	0	0	0	0	3	3	1	2	3	0	0	0
New York	55	18	73	49	21	70	45	25	70	54	29	83
North Carolina	2	5	7	0	6	6	1	11	12	0	10	10
North Dakota	1	0	1	0	0	0	0	0	0	0	0	0
Ohio	4	7	11	6	6	12	6	6	12	6	7	13
Oklahoma	0	1	1	0	0	0	0	2	2	0	3	3
Oregon	0	0	0	0	0	0	0	2	2	0	2	2
Pennsylvania	12,841	2,528	15,369	13,031	2,591	15,622	13,170	2,694	15,864	13,303	2,624	15,927
Rhode Island	2	1	3	4	1	5	4	0	4	2	0	2
South Carolina	4	3	7	4	3	7	4	0	4	3	1	4
South Dakota	0	0	0	0	0	0	0	0	0	0	0	0
Tennessee	0	2	2	0	3	3	0	2	2	0	3	3
Texas	2	10	12	3	15	18	4	10	14	6	9	15
Utah	0	2	2	0	2	2	0	2	2	0	0	0
Vermont	1	1	2	1	1	2	2	1	3	2	0	2
Virginia	15	10	25	12	11	23	15	15	30	17	15	32
Washington	0	1	1	0	0	0	0	2	2	0	1	1
Washington D.C.	1	2	3	0	1	1	0	1	1	1	2	3
West Virginia	1	2	3	1	2	3	1	2	3	2	1	3
Wisconsin	1	4	5	1	5	6	1	2	3	2	2	4
Wyoming	0	0	0	0	0	0	0	0	0	0	0	0
Armed Forces	0	3	3	0	2	2	0	0	0	1	1	2
International	45	26	71	32	24	56	20	13	33	10	5	15
Other/Unknown	1	0	1	8	17	25	15	21	36	16	30	46
TOTAL	14,451	2,855	17,306	14,567	2,960	17,527	14,615	3,054	17,669	14,712	3,007	17,719
In-State	12,841	2,528	15,369	13,031	2,591	15,622	13,170	2,694	15,864	13,303	2,624	15,927
Out-of-State	1,610	327	1,937	1,536	369	1,905	1,445	360	1,805	1,409	383	1,792
Out-of-State %	11.14%	11.45%	11.19%	10.54%	12.47%	10.87%	9.89%	11.79%	10.22%	9.58%	12.74%	10.11%

These headcounts are unduplicated and reflect the IPEDS unduplicated headcount.

Enrollment by County for Pennsylvania Residents: Fall 2020

Top 10 Counties* With Most Enrollments Ranked

County	Total	Percent	Rank
Adams	64	0.36%	
Allegheny	42	0.24%	
Armstrong	0	0.00%	
Beaver	5	0.03%	
Bedford	0	0.00%	
Berks	585	3.30%	7
Blair	8	0.05%	
Bradford	8	0.05%	
Bucks	1,459	8.23%	6
Butler	11	0.06%	
Cambria	7	0.04%	
Cameron	0	0.00%	
Carbon	39	0.22%	
Centre	14	0.08%	
Chester	4,104	23.16%	1
Clarion	1	0.01%	
Clearfield	2	0.01%	
Clinton	5	0.03%	
Columbia	25	0.14%	
Crawford	2	0.01%	
Cumberland	231	1.30%	
Dauphin	233	1.31%	
Delaware	2,858	16.13%	2

County	Total	Percent	Rank
Elk	0	0.00%	
Erie	6	0.03%	
Fayette	1	0.01%	
Franklin	20	0.11%	
Fulton	1	0.01%	
Greene	0	0.00%	
Huntingdon	0	0.00%	
Indiana	4	0.02%	
Jefferson	0	0.00%	
Juniata	1	0.01%	
Lackawanna	177	1.00%	
Lancaster	498	2.81%	8
Lawrence	1	0.01%	
Lebanon	82	0.46%	
Lehigh	321	1.81%	9
Luzerne	125	0.71%	
Lycoming	29	0.16%	
McKean	0	0.00%	
Mercer	4	0.02%	
Mifflin	2	0.01%	
Monroe	108	0.61%	
Montgomery	2,440	13.77%	3
Montour	4	0.02%	

County	Total	Percent	Rank
Northampton	281	1.59%	
Northumberland	19	0.11%	
Perry	7	0.04%	
Philadelphia	1,550	8.75%	5
Pike	48	0.27%	
Potter	1	0.01%	
Schuylkill	69	0.39%	
Snyder	11	0.06%	
Somerset	2	0.01%	
Sullivan	2	0.01%	
Susquehanna	11	0.06%	
Tioga	4	0.02%	
Union	17	0.10%	
Venango	0	0.00%	
Warren	1	0.01%	
Washington	4	0.02%	
Wayne	33	0.19%	
Westmoreland	8	0.05%	
Wyoming	12	0.07%	
York	320	1.81%	10
Out of State	1,792	10.11%	4
Total	17,719	100.00%	

*County at the time of admission.

These headcounts are unduplicated and reflect the IPEDS unduplicated headcount.

Head Count Enrollment: Fall 2016 to 2020

Five-Year Enrollment by Ethnicity and Gender

Undergraduate Students

Ethnicity	2016		2017		2018		2019		2020	
	Male	Female	Male	Female	Male	Female	Male	Female	Male	Female
White	4,533	6,485	4,549	6,365	4,538	6,354	4,448	6,362	4,459	6,442
African American	595	1022	603	1027	599	1051	600	1009	580	1060
Hispanic	345	446	345	486	341	527	351	564	295	565
Asian	126	202	143	214	147	218	143	229	152	241
Hawaiian/Pacific Islander	8	8	8	6	5	4	6	3	6	2
Native American	2	12	3	14	5	15	6	12	12	18
NRA-International	24	43	19	44	26	45	23	35	11	22
Multiracial	176	263	207	278	231	284	247	291	234	310
Not Supplied	51	56	59	81	80	97	128	158	129	174
Total	5,762	8,450	5,936	8,515	5,936	8,515	5,952	8,663	5,878	8,834

Graduate Students

Ethnicity	2016		2017		2018		2019		2020	
	Male	Female	Male	Female	Male	Female	Male	Female	Male	Female
White	597	1,366	709	1,447	735	1,470	677	1,526	670	1,486
African American	102	274	115	271	108	279	114	322	124	300
Hispanic	21	64	29	74	31	74	42	102	44	99
Asian	21	38	35	47	40	45	34	59	42	56
Hawaiian/Pacific Islander	1	1	0	0	0	0	1	2	0	2
Native American	0	1	0	0	1	1	4	0	3	3
NRA-International	25	37	21	35	22	37	16	35	13	28
Multiracial	8	32	13	40	15	52	20	51	25	44
Not Supplied	8	12	7	12	21	29	21	28	31	37
Total	783	1,825	929	1,926	929	1,926	929	2,125	952	2,055

These headcounts are unduplicated and reflect the IPEDS unduplicated headcount.

Head Count Enrollment: Fall 2016 to 2020 Enrollment by College

Undergraduate Students

College	2016	2017	2018	2019	2020
Arts & Humanities	1,371	1,389	1,290	1,459	1,525
Business and Public Management	3,655	3,922	4,094	4,032	3,985
Education & Social Work	1,554	1,531	1,547	1,562	1,676
Health Sciences	2,644	2,548	2,396	2,370	2,484
Science & Mathematics	2,776	2,811	2,764	2,867	3,023
University College	2,022	1,915	2,130	1,973	1,656
School of Music	375	335	346	352	363
Total	14,397	14,451	14,567	14,615	14,712

Graduate Students

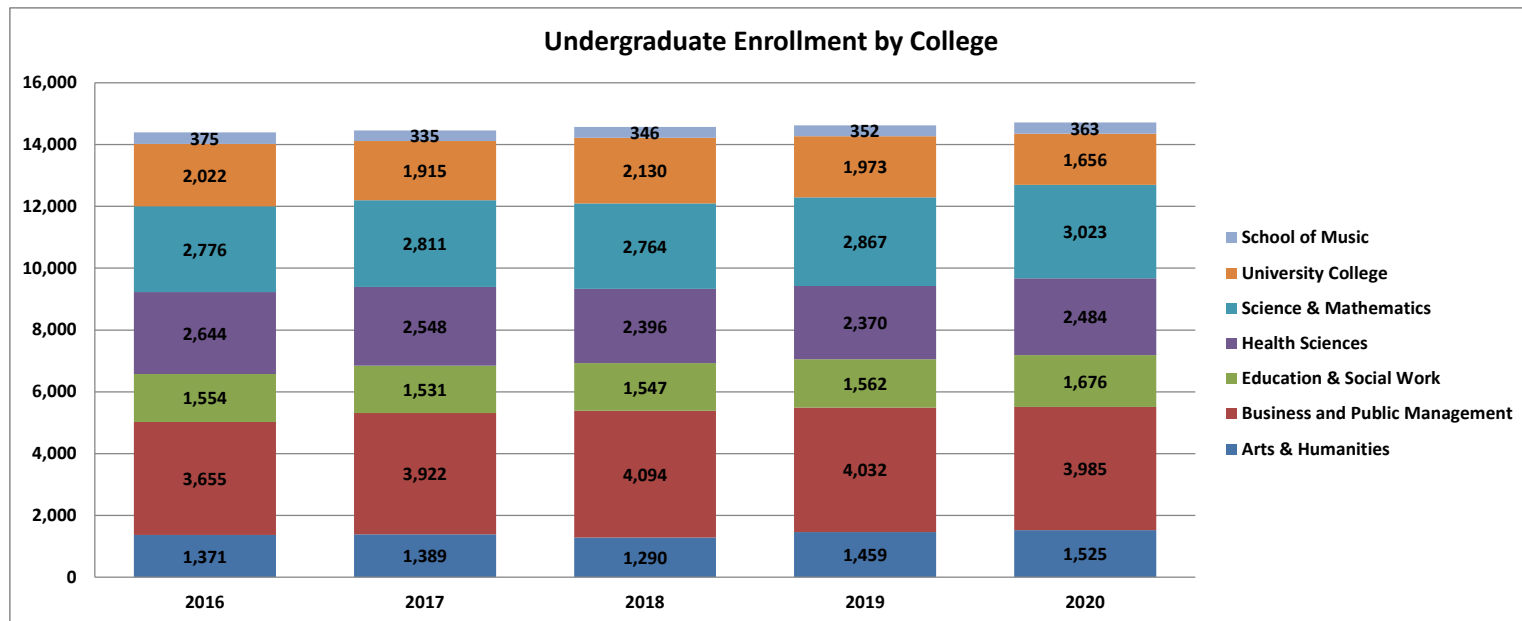
College	2016	2017	2018	2019	2020
Arts & Humanities	188	200	182	176	173
Business and Public Management	549	754	871	911	924
Education & Social Work	966	1009	1053	1060	1,044
Health Sciences	440	465	455	474	442
Science & Mathematics	304	274	286	306	318
University College	103	99	53	73	47
School of Music	58	54	60	54	59
Total	2,608	2,855	2,960	3,054	3,007

*University College include non-degree and "Exploratory Studies" major students.

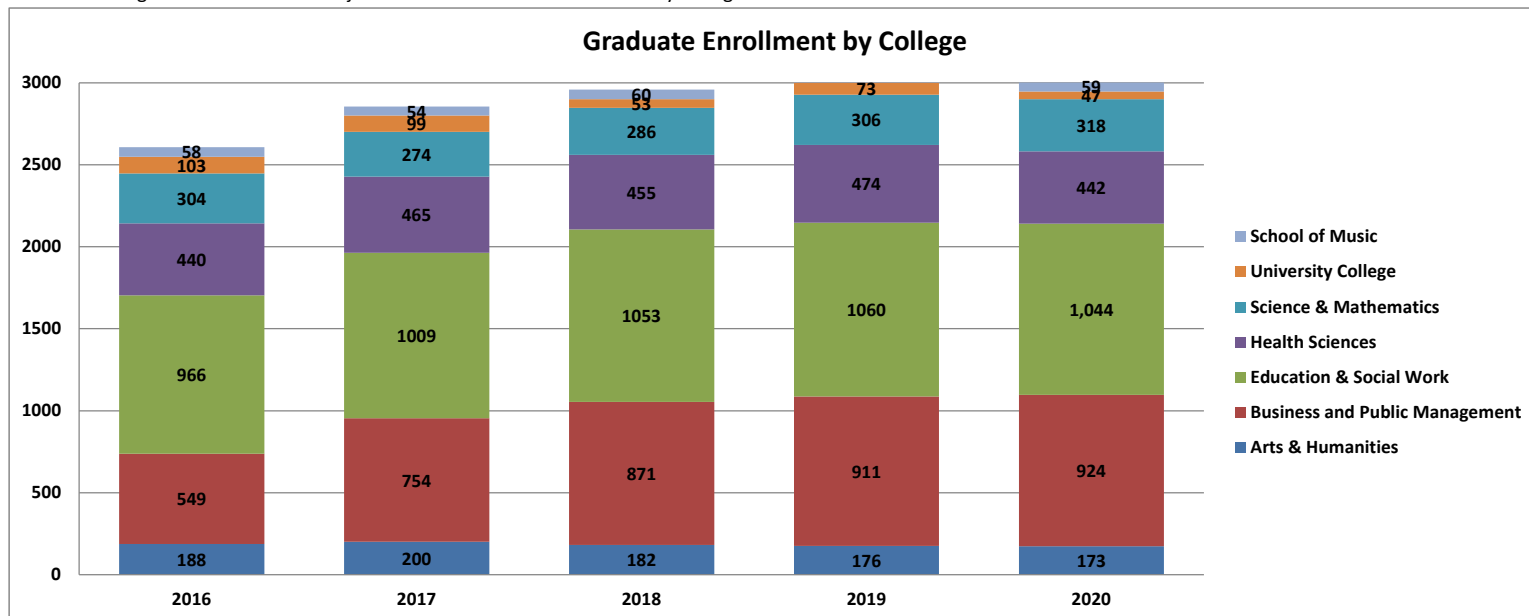
These headcounts are unduplicated and reflect the IPEDS unduplicated headcount.

Headcounts displayed in the tables are per the new organizational structure.

Head Count Enrollment: Fall 2016 to 2020 Enrollment by College: Five Falls



Note: Non-degree and undeclared major students are included in University College.

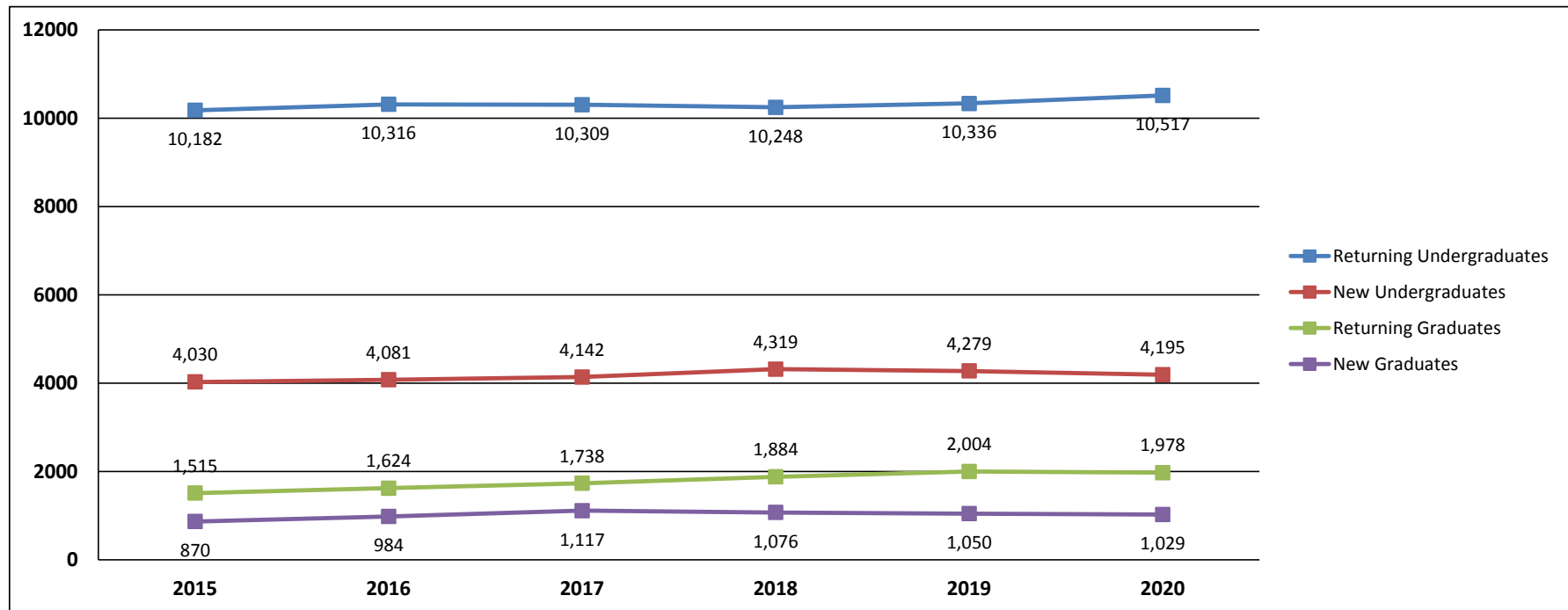


Head Count Enrollment by Student Level: Fall 2015 to Fall 2020

Fall Semester	2015	2016	2017	2018	2019	2020	One Year Difference
Undergraduate							
New First Year Degree Seeking	2,395	2,454	2,630	2,777	2,871	2,796	-75
New Transfer Degree Seeking	1,415	1,457	1,332	1,265	1,186	1,141	-45
New Readmits Degree Seeking	100	56	73	67	60	80	20
New Undergraduate Non Degree	120	114	107	210	162	178	16
Returning Undergraduate Degree Seeking First Year	596	573	663	666	629	644	15
Returning Undergraduate Degree Seeking Sophomore	2,616	2,671	2,611	2,719	2,878	2,922	44
Returning Undergraduate Degree Seeking Junior	3,087	3,052	2,976	2,904	3,019	3,019	0
Returning Undergraduate Degree Seeking Senior	3,738	3,859	3,917	3,838	3,685	3,821	136
Returning Undergraduate Non Degree	145	161	142	121	125	111	-14
Graduate							
New Masters	686	770	896	887	851	849	-2
New Doctorate	38	74	69	71	60	75	15
New Graduate Non Degree	146	140	152	118	139	105	-34
Returning Masters	1,287	1,357	1,462	1,615	1,701	1,674	-27
Returning Doctorate	40	72	107	108	142	155	13
Returning Graduate Non Degree	188	195	169	161	161	149	-12
Total Enrollment	16,597	17,005	17,306	17,527	17,669	17,719	50

These headcounts are unduplicated and reflect the IPEDS unduplicated headcount.

Headcount Enrollment by Student Level Fall 2015-2020



Annual Course Credit Hours and Student FTE Enrollment FY 2015-16 to FY 2019-20

Student FTE Enrollment: FY 2015-16 to FY 2019-20

FTE Division	2015-16	2016-17	2017-18	2018-19	2019-20	One Year Difference
Lower Division Full-Time Equivalent Students	8,458.2	8,386.1	8,478.7	8,542.2	8,681.8	139.6
Upper Division Full-Time Equivalent Students	5,356.9	5,480.7	5,522.3	5,499.7	5,561.8	62.1
Graduate Division Full-Time Equivalent Students	1,620.0	1,755.3	1,889.5	1,982.9	2,031.3	48.4
Total Full-Time Equivalent Students	15,435.1	15,622.1	15,890.5	16,024.8	16,274.9	250.1

Annual Course Credit Hours: FY 2015-16 to FY 2019-20

Credit Hours by Course Division	2015-16	2016-17	2017-18	2018-19	2019-20	One Year Difference
Lower Division Course Credit Hours	253,747.0	251,582.0	254,360.0	256,266.0	260,454.5	4,188.5
Upper Division Course Credit Hours	160,707.5	164,420.5	165,667.5	164,991.0	166,854.0	1,863.0
Graduate Division Course Credit Hours	38,879.0	42,127.0	45,349.0	47,590.5	48,751.0	1,160.5
Total University Course Credit Hours	453,333.5	458,129.5	465,376.5	468,847.5	476,059.5	7,212.0

A large purple L-shaped graphic is positioned on the right side of the page, partially overlapping the white box containing the title.

RETENTION AND GRADUATION

Retention and Graduation Rates for First Time, Full-Time, First Year Degree-Seeking Student Cohorts -- University Summary

Fall Cohort	N 1st Fall	2nd Fall		3rd Fall		4th Fall		5th Fall				6th Fall				7th Fall			
		Cohort Retained		Cohort Retained		Cohort Retained		Cumulative Graduated within 4 yrs		Cohort Retained		Cumulative Graduated within 5 yrs		Cohort Retained		Cumulative Graduated within 6 yrs		Cohort Retained	
		n	% 1F	n	% 1F	n	% 1F	n	% 1F	n	% 1F	n	% 1F	n	% 1F	n	% 1F	n	% 1F
2006	1,885	1,617	85.8	1,468	77.9	1,401	74.4	803	42.6	553	29.4	1,233	65.5	93	4.9	1,298	68.9	26	1.4
2007	1,957	1,650	84.4	1,511	77.3	1,428	73.0	857	43.8	536	27.4	1,266	64.8	96	4.9	1,346	68.8	27	1.4
2008	1,993	1,683	84.4	1,517	76.2	1,453	72.9	870	43.7	528	26.5	1,271	63.8	108	5.4	1,340	67.3	35	1.8
2009	2,241	1,909	85.2	1,747	78.0	1,693	75.5	954	42.6	670	29.9	1,502	67.0	113	5.0	1,588	70.9	35	1.6
2010	2,062	1,775	86.1	1,638	79.4	1,568	76.1	947	46.0	555	26.9	1,391	67.5	88	4.3	1,444	70.1	31	1.5
2011	2,283	1,950	85.4	1,822	79.8	1,733	75.9	1,110	48.7	592	26.0	1,587	69.6	102	4.5	1,657	72.6	25	1.1
2012	2,326	2,032	87.4	1,882	80.9	1,804	77.6	1,178	50.7	596	25.6	1,662	71.5	97	4.2	1,739	74.8	30	1.3
2013	2,292	2,014	87.9	1,885	82.3	1,803	78.8	1,237	54.1	558	24.4	1,698	74.2	73	3.2	1,755	76.7	31	1.4
2014	2,344	2,060	87.9	1,930	82.4	1,862	79.5	1,298	55.4	515	22.0	1,699	72.5	89	3.8	1,765	75.3	27	1.2
2015	2,381	2,043	85.8	1,909	80.2	1,810	76.1	1,249	52.5	499	21.0	1,665	70.0	81	3.4				
2016	2,441	2,077	85.1	1,904	78.0	1,815	74.4	1,239	50.8	525	21.5								
2017	2,620	2,215	84.6	2,055	78.5	1,939	74.0												
2018	2,771	2,369	85.5	2,207	79.7														
2019	2,860	2,431	85.0																
2020	2,765																		

Note: Data is from Fall enrollment at census dates and completions files as reported to IPEDS. Includes degree sweeps and IPEDS exclusions through 10/2020.

Second-Year Retention Rates for First Time, Full-Time, First Year Degree-Seeking Student Cohorts by Gender

Fall Cohort	Male			Female		
	N 1 st Fall	Retained 2nd Fall		N 1 st Fall	Retained 2nd Fall	
		#	%		#	%
2013	810	687	84.8	1,482	1,327	89.5
2014	892	790	88.6	1,452	1,270	87.5
2015	888	746	84.0	1,493	1,297	86.9
2016	944	788	83.5	1,497	1,289	86.1
2017	1,031	850	82.5	1,589	1,365	85.9
2018	1,064	892	83.8	1,707	1,477	86.6
2019	1,109	917	82.7	1,751	1,514	86.5
2020	1,057			1,708		

Four Year Graduation Rates for First Time, Full-Time, First Year Degree-Seeking Student Cohorts by Gender

Fall Cohort	Male			Female		
	N 1st Fall	Graduated within 4 years		N 1st Fall	Graduated within 4 years	
		#	%		#	%
2011	904	338	37.4	1,379	772	56.0
2012	869	358	41.2	1,457	820	56.3
2013	810	332	41.1	1,482	905	61.1
2014	892	405	45.5	1,452	884	60.9
2015	888	379	42.7	1,493	870	58.4
2016	944	366	38.8	1,497	873	58.3

Six Year Graduation Rates for First Time, Full-Time, First Year Degree-Seeking Student Cohorts by Gender

Fall Cohort	Male			Female		
	N 1st Fall	Graduated within 6 years		N 1st Fall	Graduated within 6 years	
		#	%		#	%
2009	888	581	65.4	1,353	1,007	74.4
2010	767	475	62.1	1,295	969	74.8
2011	904	604	66.9	1,379	1,053	76.4
2012	869	614	70.7	1,457	1,123	77.1
2013	810	545	67.6	1,482	1,210	81.6
2014	892	633	71.0	1,452	1,132	78.0

Note: Data in all charts is from Fall enrollment at census dates and completions files as reported to IPEDS. Includes degree sweeps and IPEDS exclusions through 10/2020.

A large purple graphic element consisting of a horizontal bar and a vertical bar that meet at a right angle, forming an L-shape. The horizontal bar is positioned behind the text box, and the vertical bar is on the right side of the page.

ACADEMIC DEGREE AND CERTIFICATE PROGRAMS

Undergraduate Degree and Certificate Programs - Fall 2020

College of Arts and Humanities

BA Communication Studies
 BA Communication Studies Accelerated
 BA English: Literature
 BA English: Writings
 BA History
 BA History Accelerated
 BA History: American Studies
 BA Languages & Cultures: French
 BA Languages & Cultures: German
 BA Languages & Cultures: Russian
 BA Languages & Cultures: Spanish
 BA Media & Culture
 BA Philosophy
 BA Philosophy Accelerated
 BA Philosophy: Religious Studies
 BA: Theatre
 BA Theatre: Design and Production
 BA Theatre: Music Theatre
 BA Theatre: Performance
 BA Women's and Gender Studies
 BFA Graphic & Inter. Design
 BFA Studio Arts
 Certificate Conflict Transformation Management
 Certificate TESL
 Teaching Certification English
 Teaching Certification French
 Teaching Certification German
 Teaching Certification Latin
 Teaching Certification Russian
 Teaching Certification Social Studies - History
 Teaching Certification Spanish
 Teaching Certification Teacher Ed French
 Teaching Certification Teacher Ed German
 Teaching Certification Teacher Ed Russian
 Teaching Certification Teacher Ed Spanish

School of Music

BM Music: Performance Instrument
 BM Music: Performance Jazz
 BM Music: Performance Keyboard
 BM Music: Performance Organ
 BM Music: Performance Voice
 BM Music Education: Instrument
 BM Music Education: Keyboard
 BM Music Education: Voice
 BM Music: Elective Studies
 BM Music: Music Therapy
 BM Music: History
 BM Music: Theory
 BM Music: Composition
 Teaching Certification Music Education

College of Business and Public Management

BS Accounting
 BS Accounting Accelerated
 BS Business Management
 BS Business Management (DCCC Marple)
 BS Business Management (Philadelphia)
 BS Criminal Justice
 BS Criminal Justice Accelerated
 BS Economics
 BS Finance
 BS Geography
 BS Geography Accelerated
 BS Geography: Environmental
 BS Geography: Environmental Accelerated
 BS Geography: Geographic Information Systems
 BS Geography: Geographic Information Systems Accelerated
 BS Geography: Location Analytics
 BS International Business
 BS Marketing
 BS Pre-Business: Accounting

College of Business and Public Management (cont...)

BS Pre-Business: Eco-Finance
 BS Pre-Business: Management
 BS Pre-Business: Management (DCCC Marple)
 BS Pre-Business: Management (Philadelphia)
 BS Pre-Business: Marketing
 BS Pre-International Business
 BS Urban & Environmental Plan
 BS Urban & Environmental Plan Accelerated to MS Geography
 BS Urban & Environmental Plan Accelerated to MURP

College of Education and Social Work

BSED Biology
 BSED Chemistry
 BSED Early Grades Prep, PK-4 Education
 BSED Early Grades Prep, PK-4 Education Accelerated
 BSED Earth-Space Science
 BSED Earth-Space Science: Geology
 BSED English: Literature
 BSED English: Writings
 BSED Mathematics
 BSED Middle Grades Prep, 4-8 Education
 BSED Physics
 BSED Special Education: PreK-12
 BSED Special Education: PreK-12 Double Major
 BSW Social Work
 BSW Social Work (Philadelphia)
 Certificate Education for Sustainability
 Teaching Certification Early Childhood Education
 Teaching Certification Teacher Ed Social Studies - Geography
 Teaching Certification Teacher Ed Social Studies - History
 Teaching Certification Teacher Ed Social Studies - Political Science

Undergraduate Degree and Certificate Programs - Fall 2020 (continued)

College of Health Sciences

BA Communication Science & Disorders
 BA Communication Science & Disorders: Accelerated
 BS Environmental Health
 BS Exercise Science: Exercise Science Specialist
 BS Exercise Science: Exercise Science Specialist Accelerated
 BS Health and Physical Education
 BS Health Science: General
 BS Health Science: Respiratory Care
 BS Health Science: Sport Medicine Concentration
 BS Health Science: Sport Medicine Concentration Accelerated
 BS Nutrition and Dietetics
 BS Nutrition and Dietetics Accelerated
 BS Nutrition: Lifestyle Nutrition
 BS Nutrition: Sustainable Food Systems Management
 BS Pre-Chiropractic
 BS Pre-Occupational Therapy
 BS Pre-Physical Therapy
 BS Public Health
 BS Sports Medicine Studies
 BS Sports Medicine Studies Accelerated
 BSN Nursing
 BSN Nursing: 2nd Degree
 BSN Nursing: RN
 BSN Nursing: RN (Philadelphia)
 BSN Nursing: RN (DCCC)
 Certificate Athletic Training
 Pre-Grad Program Certificate

University College

BA Interdisciplinary Studies
 BA Liberal Studies: Arts & Humanities
 BS Interdisciplinary Studies: Profession
 BS Interdisciplinary Studies: STEM-H
 BS Liberal Studies: Profession
 Certificate Honors Seminar
 Undeclared Business
 Exploratory Studies
 Exploratory Studies Internal Transfer

College of Science and Mathematics

BA Anthropology
 BA Mathematics
 BA Mathematics Accelerated
 BA Political Science: Government and Politics
 BA Political Science: International Relations
 BA Sociology
 BS Biochemistry
 BS Biology: Integrative
 BS Biology: Cell & Molecular
 BS Biology: Ecology and Conservation
 BS Biology: Ecology and Conservation Accelerated
 BS Biology: Integrative Accelerated
 BS Biology: Marine Science
 BS Biology: Medical Lab Science
 BS Biology: Microbiology
 BS Biomedical Engineering
 BS Chemistry
 BS Chemistry-Biology

College of Science & Mathematics (cont...)

BS Computer Science
 BS Computer Science Accelerated
 BS Forensic & Toxicological Chemistry
 BS Geoscience: Earth Systems
 BS Geoscience: Earth Systems Accelerated
 BS Geoscience: Geology
 BS Geoscience: Geology Accelerated
 BS Mathematics: Actuarial Science
 BS Mathematics: Applied & Computational
 BS Mathematics: Applied & Computational Accelerated
 BS Mathematics: Finance
 BS Mathematics: Pure Mathematics
 BS Mathematics: Pure Mathematics Accelerated
 BS Mathematics: Statistics
 BS Mathematics: Statistics Accelerated
 BS Pharmaceutical Product Dev
 BS Pharmaceutical Product Dev: Pre Pharmacy
 BS Physics
 BS Physics-Engineering
 BS Psychology
 Computer Security CERTIF
 Teaching Certification Biology
 Teaching Certification Chemistry
 Teaching Certification Earth-Space Science
 Teaching Certification General Science
 Teaching Certification Mathematics
 Teaching Certification Physics
 Teaching Education General Science

Graduate Degree and Certificate Programs - Fall 2020

College of Business and Public Management

Doctor of Public Administration
 Master of Urban and Regional Planning
 Master of Urban and Regional Planning - Accelerated
 MBA General
 MPA Human Resource Management
 MPA Nonprofit Administration
 MPA Public Administration
 MPA Public Management
 MS Criminal Justice
 MS Criminal Justice - Accelerated
 MS Criminal Justice (Philadelphia)
 MS Geography
 MS Geography - Accelerated
 MS Human Resource Management
 Certificate Administration
 Certificate Geographic Information Systems
 Certificate Human Resource Management
 Certificate Non Profit Administration
 Certificate Urban and Regional Planning

School of Music

MM Music Performance
 MM Music Performance- Instrumental
 MM Music Performance- Organ
 MM Music Performance- Piano
 MM Music Performance- Vocal
 MM Music Performance- Choral
 MM Music Performance- Instrumental Conducting
 MM Music: Piano Pedagogy
 MM Music: Theory & Composition
 MM Music Education: Kodaly
 MM Music Education: Music Technology
 MM Music Education: Orff-Schulwerk

School of Music (cont...)

MM Music Education: Research
 MM Music Education: Performance
 MM Music: History and Literature
 Music Education: Technology
 Certificate Kodaly Methodology
 Certificate Music Technology
 Certificate Orff-Schulwerk
 Certificate Piano Pedagogy
 Teaching Certification Music Education

College of Education and Social Work

Doctor of Education
 Doctor of Education: Higher Education
 MED Applied Studies in Teaching and Learning
 MED Applied Studies in Teaching and Learning (Kenn)
 MED Applied Studies in Teaching and Learning (Wil)
 MED Counseling - School
 MED Early Childhood Education
 MED Literacy
 MED Literacy Accelerated
 MED Literacy at Coatsville School District
 MED Literacy at OJR School District
 MED Secondary Education
 MED Secondary Education: Residency
 MED Secondary Education: W. Wilson Residency
 MED Special Education
 MS Clinical Mental Health Counseling
 MS Higher Education Policy & Student Affairs
 MS Transfer Education & Social Change
 MS Transfer Education & Social Change (Philadelphia)
 MSW Social Work
 MSW Social Work Advanced Standing
 MSW Social Work (Philadelphia)

College of Education and Social Work (cont..)

MSW Social Work Advanced Standing (Philadelphia)
 Professional Growth Counseling
 Professional Growth Reading
 Professional Growth Special Education
 Certificate Autism
 Certificate Education for Sustainability
 Certificate Educational Technology
 Certificate Gerontology
 Certificate Higher Education Policy & Student Affairs
 Certificate Literacy
 Certificate Literacy Coaching
 Certificate of Advanced Graduate Professional Growth
 Certificate Professional Counseling Licensure Prep
 Certificate Special Education
 Certificate of Teacher Leadership
 Certificate Transform Principalship
 Certificate Universal Design Learning
 Grad Certificate Latin American Education Philadelphia
 Grad Certificate in Urban Education Philadelphia
 Teaching Certification Counseling
 Teaching Certification Early Childhood Education
 Teaching Certification Early Grades Preparation
 Teaching Certification Middle Grades Preparation
 Teaching Certification Reading
 Teaching Certification Reading (Philadelphia)
 Teaching Certification Secondary Education
 Teaching Certification Special Education: 7-12
 Teaching Certification Special Education 7-12 (Online)
 Teaching Certification Special Education 7-12 (Philadelphia)
 Teaching Certification Special Education: PK-8
 Teaching Certification Special Education: PK-8 (Online)
 Teaching Certification Special Education: PK-8 (Philadelphia)

Graduate Degree and Certificate Programs - Fall 2020 (continued)

College of Science and Mathematics

Doctorate of Psychology
 MA Mathematics
 MA Mathematics Accelerated
 MA Mathematics: Math Education
 MA Psychology: Clinical
 MA Psychology: General
 MA Psychology: Industrial/Organizational
 MS Applied & Computational Math
 MS Applied & Computational Math Accelerated
 MS Applied Statistics
 MS Applied Statistics Accelerated
 MS Applied Statistics: Biostatistics Conc.
 MS Applied Statistics: Business & Marketing Analytics Conc.
 MS Applied Statistics: Data Science Concentration
 MS Biology: Non-Thesis
 MS Biology: Thesis
 MS Biology: Thesis Accelerated
 MS Computer Science
 MS Computer Science Accelerated
 MS Geoscience
 MS Geoscience Accelerated
 Certificate Applied Statistics
 Certificate Clinical Mental Health
 Certificate Computer Security
 Certificate Industrial/Organizational Psychology
 Certificate Information Systems
 Certificate Post Bacc in Pre-Medicine
 Certificate Post Master Advanced Study in Applied Statistics
 Certificate Web Technology
 Teaching Certification Biology
 Teaching Certification Chemistry
 Teaching Certification Earth-Space Science
 Teaching Certification General Science
 Teaching Certification Physics

College of Health Sciences

Doctorate of Nursing Practice
 MA Speech-Language Pathology
 MA Speech-Language Pathology Accelerated
 MED Health: School Health
 MPH Public Health: Administration
 MPH Public Health: Community
 MPH Public Health: Environment
 MPH Public Health: Integrative
 MPH Public Health: Management
 MPH Public Health: Nutrition
 MS Athletic Training
 MS Athletic Training Accelerated
 MS Athletic Training - Post Professional Concentration
 MS Community Nutrition
 MS Community Nutrition Accelerated
 MS Community Nutrition - Internship
 MS Exercise and Sport Science
 MS Exercise and Sport Science Accelerated
 MS Exercise and Sport Science - Applied Sport Performance Concentration
 MS Exercise and Sport Science - Clinical Exercise Physiology Concentration
 MS Exercise and Sport Science - Sport/Exercise Psychology Concentration
 MS Health and Physical Education - Sport/Exercise Physiology
 MS Physical Education
 MSN Nursing
 MSN Nursing: Advanced Practice-Adult Gerontology
 MSN Nursing: Nurse Educator
 Certificate Adapted Physical Education
 Certificate Applied Mindfulness
 Certificate Emergency Preparedness
 Certificate Health Care Management
 Certificate Health: Integrative Health
 Certificate Post Master Dietetic Intern
 Certificate School Nursing
 Certificate Sports Management and Athletics

College of Health Sciences (cont...)

Teaching Certificate Health & Physical Education
 Teaching Certificate School Nursing

College of Arts and Humanities

MA Communication Studies
 MA Communication Studies Accelerated
 MA English
 MA History
 MA History Accelerated
 MA Holocaust and Genocide Studies
 MA Languages & Cultures in French
 MA Languages & Cultures in German
 MA Languages & Cultures in Spanish
 MA Philosophy: Applied Ethics
 MA Philosophy: Applied Ethics - Accelerated
 MA Philosophy: General
 MA Philosophy: General - Accelerated
 MA TESL
 Certificate Business Ethics
 Certificate Healthcare Ethics
 Certificate Holocaust and Genocide Studies
 Certificate Publishing
 Certificate TESL
 Graduate Certificate Digital Media Marketing
 Teaching Certification English
 Teaching Certification French
 Teaching Certification German
 Teaching Certification Latin
 Teaching Certification Social Studies - History
 Teaching Certification Spanish

Professional and Program Accreditations

West Chester University is accredited by

The Middle States Commission on Higher Education (MSCHE)

Accreditation Board for Engineering and Technology (ABET)
Accreditation Council for Education and Nutrition and Dietetics (ACEND)
Accrediting Council for Continuing Medical Education (ACCME)
American Chemical Society (ACS)
American Music Therapy Association (AMTA)
American Orff Schulwerk Association (AOSA)
American Psychological Association (APA)
American Council on Teaching Foreign Languages (ACTFL)- Recognized Programs
American Speech-Language-Hearing Association (ASHA)
Association to Advance Collegiate Schools of Business (AACSB)
Association of Middle Level Education (AMLE)- Recognized Programs
Commission on Accreditation of Allied Health Education Programs (CAAHEP) - Pending Renewal
Commission on Accreditation of Athletic Training Education (CAATE)
Commission on Collegiate Nursing Education (CCNE)
Committee on Accreditation for Respiratory Care (CoARC)
Council for Accreditation of Counseling and Related Educational Programs (CACREP)
Council for the Accreditation of Educator Preparation (CAEP)
Council For Exceptional Children (CEC)- Recognized Programs
Council on Education for Public Health (CEPH)
Council on Social Work Education (CSWE)

Professional and Program Accreditations (Continued)

Forensic Science Education Program Accreditation Commission (FEPAC)
International Literacy Association (ILA)- Recognized Programs
Middle States Commission on higher Education (MSCHE)
National Association for the Education of Young Children (NAEYC) - Recognized Programs
National Association for Sport and Physical Education (NASPE) - Recognized Programs
National Association of Schools of Art and Design (NASAD)
National Association of Schools of Music (NASM)
National Association of Schools of Theatre (NAST)
National Council for Social Studies (NCSS) - Recognized Programs
National Council of Teachers of English (NCTE) - Recognized Programs
National Council of Teachers of Mathematics (NCTM) - Recognized Programs
National Environmental Health Science and Protection Accreditation Council (EHAC)
National Science Teachers Association (NSTA) - Recognized Programs
National Security Agency (NSA) - Recognized Programs
Network of Schools of Public Policy, Affairs, and Administration (NASPAA)
Organization of American Kodaly Educators (OAKE)
Society of Health and Physical Educators (SHAPE) - Recognized Programs
Teaching English to Speakers of Other Languages (TESOL) - Recognized Programs



DEGREES CONFERRED

Degrees Conferred in 2018-19 and 2019-20

Counts include Baccalaureate (Primary and Secondary Major), Master's, and Doctoral degrees awarded in an Academic Year. For example, the 2019-20 degrees conferred include August 2019, December 2019, January 2020, and May 2020. Sweeps are included in the counts below.

College of Art & Humanities

Art & Design:	2018-19	2019-20
Graphic & Inter. Design BFA	26	28
Studio Arts BFA	14	8
Art & Design Undergraduate Total	40	36
Art & Design Total	40	36

Communication Studies:

Communication Studies BA	182	185
B.A. in Media & Culture	-	15
Communication Studies Undergraduate Total	182	200
Communication Studies MA (Philadelphia)	3	0
Communication Studies MA	6	4
Communication Studies Graduate Total	9	4
Communication Studies Total	191	204

English:

English BA: Literature	26	25
English BA: Writings	44	46
English Undergraduate Total	70	71
English MA	17	20
English Graduate Total	17	20
English Total	87	91

Foreign Languages:

BA Languages & Culture, French	5	4
BA Languages & Culture, Russian	3	1
BA Languages & Cultures, Spanish	14	12
BA Languages & Cultures, German	4	1
French BA	2	0
Spanish BA	3	0
Foreign Languages Undergraduate Total	31	18

Degrees Conferred in 2018-19 and 2019-20

Counts include Baccalaureate (Primary and Secondary Major), Master's, and Doctoral degrees awarded in an Academic Year. For example, the 2019-20 degrees conferred include August 2019, December 2019, January 2020, and May 2020. Sweeps are included in the counts below.

Foreign Languages (Cont'd...):	2018-19	2019-20
French MA	1	0
Lang & Cultures MA, French	2	5
Lang & Cultures MA, German	0	1
Lang & Cultures MA, Spanish	5	3
Spanish MA	1	2
Foreign Languages Graduate Total	9	11
Foreign Languages Total	40	29
History:		
History BA	50	39
History: American Studies BA	0	2
History Undergraduate Total	50	41
History MA	6	7
History MED	1	0
History Graduate Total	7	7
History Total	57	48
Holocaust and Genocide Studies:		
Holocaust & Genocide Studies MA	3	1
Holocaust and Genocide Graduate Total	3	1
Holocaust and Genocide Studies Total	3	1
Philosophy:		
Philosophy BA	7	6
Philosophy: Religious Studies BA	1	1
B.A. Philosophy Accelerated	1	0
Philosophy Undergraduate Total	9	7
Philosophy MA: Applied Ethics	0	2
Philosophy MA: General	3	9
Philosophy Graduate Total	3	11
Philosophy Total	12	18

Degrees Conferred in 2018-19 and 2019-20

Counts include Baccalaureate (Primary and Secondary Major), Master's, and Doctoral degrees awarded in an Academic Year. For example, the 2019-20 degrees conferred include August 2019, December 2019, January 2020, and May 2020. Sweeps are included in the counts below.

Teach English as a Second Language:	2018-19	2019-20
TESL MA	9	5
Teach English as a Second Language Graduate Total	9	5
Teach English as a Second Lang Total	9	5

Women's and Gender Studies:		
Women's and Gender Studies BA	10	18
Women's and Gender Studies Undergraduate Total	10	18
Women's and Gender Studies Total	10	18

Theatre Arts:		
Theatre: BA	8	5
Theatre: Design/Production BA	1	3
Theatre: Music Theatre BA	9	7
Theatre: Performance BA	2	2
Theatre Arts Undergraduate Total	20	17
Theatre Arts Total	20	17
College of Arts and Humanities Undergraduate Total	412	408
College of Arts and Humanities Graduate Total	57	59
College of Art & Humanities Total	469	467

School of Music

Applied Music:		
Music Performance MM	8	0
Applied Music Graduate Total	8	0
Applied Music Total	8	0

Ensembles and Conducting:		
Music Performance- MM Choral Cond.	1	2
Music Performance- MM Instrumental Cond.	3	2
Applied Music Graduate Total	4	4
Ensembles and Conducting Total	4	4

Degrees Conferred in 2018-19 and 2019-20

Counts include Baccalaureate (Primary and Secondary Major), Master's, and Doctoral degrees awarded in an Academic Year. For example, the 2019-20 degrees conferred include August 2019, December 2019, January 2020, and May 2020. Sweeps are included in the counts below.

Instrumental Music:	2018-19	2019-20
Music: Performance Instr BM	13	10
Music: Performance Jazz BM	1	0
Instrumental Music Undergraduate Total	14	10
Music Performance- MM Instrument	1	5
Instrumental Music Graduate Total	1	5
Instrumental Music Total	15	15

Music Education:		
Music Education: Instrument BM	31	23
Music Education: Keyboard BM	6	2
Music Education: Voice BM	16	8
Music Therapy BM	0	2
Music Education Undergraduate Total	53	35
Music Education MM: Music Tech	0	3
Music Education MM: Performance	0	3
Music Education MM: Research	2	0
Music Education: Technology	2	0
Music Education Graduate Total	4	6
Music Education Total	57	41

Music Theory, History and Composition:		
Music: Elective Studies BM	6	9
Music: Composition BM	8	9
Music: History BM	0	1
Music: Theory BM	3	2
Music, Theory, History and Comp Undergraduate Total	17	21
Music: History and Literature	1	1
Music: Theory & Composition MM	3	3
Music, Theory, History and Composition Graduate Total	4	4
Music Theory, History and Composition Total	21	25

Degrees Conferred in 2018-19 and 2019-20

Counts include Baccalaureate (Primary and Secondary Major), Master's, and Doctoral degrees awarded in an Academic Year. For example, the 2019-20 degrees conferred include August 2019, December 2019, January 2020, and May 2020. Sweeps are included in the counts below.

Vocal and Keyboard Music:	2018-19	2019-20
Music: Performance Keyboard BM	6	1
Music: Performance Voice BM	4	6
Vocal and Keyboard Music Undergraduate Total	10	7
Music Performance-MM Piano	2	0
Music: Piano Pedagogy MM	3	1
Vocal and Keyboard Music Graduate Total	5	1
Vocal and Keyboard Music Total	15	8

School of Music Undergraduate Total	94	73
School of Music Graduate Total	26	20
School of Music Total	120	93

College of Business & Public Management

Criminal Justice:

Criminal Justice BS	110	125
Criminal Justice BS (Phila)	9	2
Criminal Justice BS Accel	17	17
Criminal Justice Undergraduate Total	136	144
Criminal Justice MS Accelerate	12	10
Criminal Justice MS	14	10
Criminal Justice MS (Phila)	4	5
Criminal Justice Graduate Total	30	25
Criminal Justice Total	166	169

Degrees Conferred in 2018-19 and 2019-20

Counts include Baccalaureate (Primary and Secondary Major), Master's, and Doctoral degrees awarded in an Academic Year. For example, the 2019-20 degrees conferred include August 2019, December 2019, January 2020, and May 2020. Sweeps are included in the counts below.

	2018-19	2019-20
Geography & Planning:		
Geography BA	1	0
Geography BA Accelerated	2	0
Geography BS	0	1
Geography: Environmental	0	1
Geography: Environmental Accelerated	0	1
Geography: Environmental BS	0	1
Geography: GIS BA	1	2
Geography: GIS Accelerated	0	1
Geography: Location Analytics BS	0	1
Geography: Urban/Regional PI BA	2	0
Urban & Environmental Plan BS	5	14
Urban & Environmental Plan BS Accelerated to MS Geography	6	2
Urban & Environmental Plan BS Accelerated to MURP	0	1
Geography & Planning Undergraduate Total	17	25
Geography MS	8	7
Geography MS Accelerated	0	9
Master of Urban and Regional Planning	5	4
Geography & Planning Graduate Total	13	20
Geography & Planning Total	30	45
Public Policy and Administration:		
Human Resource Mgmt. MPA	1	0
Nonprofit Administration MPA	4	3
Public Administration MPA	27	38
Public Policy and Administration Graduate Total	32	41
Doctor of Public Administration	16	15
Public Policy and Administration Doctorate Total	16	15
Public Policy and Administration Total	48	56

Degrees Conferred in 2018-19 and 2019-20

Counts include Baccalaureate (Primary and Secondary Major), Master's, and Doctoral degrees awarded in an Academic Year. For example, the 2019-20 degrees conferred include August 2019, December 2019, January 2020, and May 2020. Sweeps are included in the counts below.

Accounting:	2018-19	2019-20
Accounting BS	130	134
Accounting Undergraduate Total	130	134
Accounting Total	130	134
 Economics:		
Economics BS	89	66
Finance BS	238	213
Economics Undergraduate Total	327	279
Economics Total	327	279
 Management:		
Business Management BS	233	217
Business Management BS, DCCC Marple	0	3
Business Management BS, Philadelphia	0	2
International Business BS	12	22
Management Undergraduate Total	245	244
Human Resource Management MS	9	37
Management Graduate Total	9	37
Management Total	254	281
 Marketing:		
Marketing BS	246	222
Marketing Undergraduate Total	246	222
Marketing Total	246	222

Degrees Conferred in 2018-19 and 2019-20

Counts include Baccalaureate (Primary and Secondary Major), Master's, and Doctoral degrees awarded in an Academic Year. For example, the 2019-20 degrees conferred include August 2019, December 2019, January 2020, and May 2020. Sweeps are included in the counts below.

MBA Program:	2018-19	2019-20
Bus Admin: General MBA	201	231
MBA Program Graduate Total	201	231
MBA Program Total	201	231
College of Business & Public Management Undergraduate Total	1,101	1,048
College of Business & Public Management Graduate Total	285	354
College of Business & Public Management Doctorate Total	16	15
College of Business & Public Management Total	1,402	1,417

College of Education & Social Work

Counselor Education:

Couns: Higher Ed/Student Affairs MS	23	1
Counseling: School MED	32	44
MS Clinical Mental Health Counseling	0	17
Counselor Education Graduate Total	55	62
Counselor Education Total	55	62

Early and Middle Grades Education:

Early Grades Prep, PK-4 BSED	220	204
Middle Grades Prep, 4-8 BSED	26	42
Early and Middle Grades Ed. Undergraduate Total	246	246
Applied Studies Teach/Lear MED	13	13
Early Childhood Education MED	11	11
Early and Middle Grades Ed. Graduate Total	24	24
Early and Middle Grades Ed. Total	270	270

Literacy:

Literacy MED	31	43
Literacy Graduate Total	31	43
Literacy Total	31	43

Degrees Conferred in 2018-19 and 2019-20

Counts include Baccalaureate (Primary and Secondary Major), Master's, and Doctoral degrees awarded in an Academic Year. For example, the 2019-20 degrees conferred include August 2019, December 2019, January 2020, and May 2020. Sweeps are included in the counts below.

Educational Foundations and Policy Studies:	2018-19	2019-20
MS Higher Education Policy & Student Affairs	28	32
MS Transf Education & Social Change	7	7
MS Transf Education & Social Change, Philadelphia	0	1
Educational Foundations and Policy Studies Graduate Total	35	40
Educational Foundations and Policy Studies Total	35	40

Secondary Education:

Biology BSED	5	4
Chemistry BSED	4	2
Earth-Space Science BSED	5	0
English: Literature BSED	8	10
English: Writings BSED	12	7
Mathematics BSED	11	15
Secondary Education Undergraduate Total	45	38
Secondary Education MED	1	0
Secondary Education Graduate Total	1	0
Secondary Education Total	46	38

Special Education:

Special Education: 7-12 BSED	8	5
Special Education: PK-8 BSED	127	116
Special Education Undergraduate Total	135	121
Special Education MED	7	1
Special Education MED (online)	46	48
Special Education Graduate Total	53	49
Special Education Total	188	170

Degrees Conferred in 2018-19 and 2019-20

Counts include Baccalaureate (Primary and Secondary Major), Master's, and Doctoral degrees awarded in an Academic Year. For example, the 2019-20 degrees conferred include August 2019, December 2019, January 2020, and May 2020. Sweeps are included in the counts below.

Social Work:	2018-19	2019-20
Social Work BSW	46	44
Social Work BSW (Phila)	23	19
Social Work Undergraduate Total	69	63
Social Work MSW	44	50
Social Work MSW (Phila)	36	40
Social Work MSW Advanced Stand	19	23
Social Work MSW, Advanced Stand, Phila	6	16
Social Work Graduate Total	105	129
Social Work Total	174	192

Education in Policy, Planning, and Administration:

Doctor of Education	0	9
Education in Policy, Planning, and Administration Doctoral Total	0	9
Education Policy and Planning Total	0	9
College of Education & Social Work Undergraduate Total	495	468
College of Education & Social Work Graduate Total	304	347
College of Education & Social Work Doctoral Total	0	9
College of Education & Social Work Total	799	824

College of Health Sciences

Communicative Disorders:

Communication Sci & Disord BA	80	98
Communicative Disorders Undergraduate Total	80	98
Speech-Language Pathology MA	29	27
Communicative Disorders Graduate Total	29	27
Communicative Disorders Total	109	125

Degrees Conferred in 2018-19 and 2019-20

Counts include Baccalaureate (Primary and Secondary Major), Master's, and Doctoral degrees awarded in an Academic Year. For example, the 2019-20 degrees conferred include August 2019, December 2019, January 2020, and May 2020. Sweeps are included in the counts below.

Kinesiology:	2018-19	2019-20
Exercise Science BS	54	45
Health & Physical Educ BS	26	25
Pre-Chiropractic BS	4	1
Pre-Occupational Therapy BS	80	49
Pre-Physical Therapy BS	72	52
Kinesiology Undergraduate Total	236	172
MS in Ex Sport Phys: Athletic Training	3	0
MS in Exercise/Sport Science	14	8
Kinesiology Graduate Total	17	8
Kinesiology Total	253	180

Nutrition:		
Nutrition: Lifestyle Nutrition BS	0	14
Nutrition: Sustainable Food Systems Management BS	0	4
Nutrition and Dietetics BS	89	61
Nutrition and Dietetics BS Accelerated	30	23
Nutrition Undergraduate Total	119	102
Public Health MPH: Nutrition	2	0
Community Nutrition MS	12	18
Community Nutrition MS Accelerated	15	13
Nutrition Graduate Total	29	31
Nutrition Total	148	133

Sports Medicine Department:		
Athletic Training BS	46	26
Sports Medicine Department Undergraduate Total	46	26
Athletic Training MS	12	14
Athletic Training Post-Professional Concentration MS	7	8
Sports Medicine Department Graduate Total	19	22
Sports Medicine Department Total	65	48

Degrees Conferred in 2018-19 and 2019-20

Counts include Baccalaureate (Primary and Secondary Major), Master's, and Doctoral degrees awarded in an Academic Year. For example, the 2019-20 degrees conferred include August 2019, December 2019, January 2020, and May 2020. Sweeps are included in the counts below.

	2018-19	2019-20
Nursing:		
Nursing BSN	47	46
Nursing BSN: 2nd degree	33	38
Nursing BSN: RN	61	22
Nursing BSN: RN (DCCC)	0	12
Nursing BSN: RN (Philadelphia)	25	27
Nursing Undergraduate Total	166	145
Nursing MSN: Nurse Educator	7	11
Nursing Graduate Total	7	11
Doctor of Nursing Practice	10	8
Nursing Doctorate Total	10	8
Nursing Total	183	164
Health:		
Environmental Health BS	21	10
Health Sci: General BS	29	17
Health Sci: Respiratory Care BS	27	24
Public Health	70	59
Health Undergraduate Total	147	110
Health: School Health MED	5	4
Public Health MPH: Community	24	24
Public Health MPH: Environment	7	9
Public Health MPH: Management	29	23
Health Graduate Total	65	60
Health Total	212	170
College of Health Sciences Undergraduate Total	794	653
College of Health Sciences Graduate Total	166	159
College of Health Sciences Doctorate Total	10	8
College of Health Sciences Total	970	820

Degrees Conferred in 2018-19 and 2019-20

Counts include Baccalaureate (Primary and Secondary Major), Master's, and Doctoral degrees awarded in an Academic Year. For example, the 2019-20 degrees conferred include August 2019, December 2019, January 2020, and May 2020. Sweeps are included in the counts below.

College of Sciences & Mathematics	2018-19	2019-20
Anthropology & Sociology:		
Anthropology BA	11	7
Sociology BA	17	18
Anthropology & Sociology Undergraduate Total	28	25
Anthropology & Sociology Total	28	25
Biology:		
Biology BS	52	28
Biology: Integrative BS Accelerated	1	0
Biology: Cell & Molecular BS	55	46
Biology: Ecology/Conserv BS	12	10
Biology: Marine Science	7	3
Biology: Microbiology BS	11	15
Biology: Medical Lab Sciences BS	1	2
Biology Undergraduate Total	139	104
Biology: Thesis MS	0	3
Biology: Thesis MS Accelerated	0	2
Biology MS	5	2
Biology Graduate Total	5	7
Biology Total	144	111
Chemistry:		
Biochemistry BS	2	0
Chemistry BS	19	7
Chemistry-Biology BS	18	17
Forensic & Toxicological Chemistry BS	11	5
Chemistry Undergraduate Total	50	29
Chemistry Total	50	29

Degrees Conferred in 2018-19 and 2019-20

Counts include Baccalaureate (Primary and Secondary Major), Master's, and Doctoral degrees awarded in an Academic Year. For example, the 2019-20 degrees conferred include August 2019, December 2019, January 2020, and May 2020. Sweeps are included in the counts below.

Computer Science:	2018-19	2019-20
Computer Science BS	91	94
Computer Science, Accelerated BS	10	8
Computer Science Undergraduate Total	101	102
Computer Science MS	11	6
Computer Science Graduate Total	11	6
Computer Science Total	112	108

Earth & Space Sciences:		
Geoscience: Earth Systems BS	7	10
Geoscience: Geology BS	9	11
Geoscience: Geology Accelerated	5	3
Geoscience: Earth Systems Accelerated	3	5
Earth & Space Undergraduate Total	24	29
Geoscience MS	14	6
Geoscience MS Accelerated	3	4
Earth & Space Graduate Total	17	10
Earth & Space Total	41	39

Mathematics:		
Mathematics BA	1	4
Mathematics BA Accelerated	0	1
Mathematics: Actuarial Science BS	12	20
Mathematics: Finance BS	7	5
Mathematics: Applied & Computational BS	1	2
Mathematics: Applied & Computational BS Accelerated	0	1
Mathematics: Pure Mathematics	5	4
Mathematics: Pure Mathematics Accelerated	0	1
Mathematics: Statistics BS	2	10
Mathematics: Statistics BS Accelerated	2	2
Mathematics Undergraduate Total	30	50

Degrees Conferred in 2018-19 and 2019-20

Counts include Baccalaureate (Primary and Secondary Major), Master's, and Doctoral degrees awarded in an Academic Year. For example, the 2019-20 degrees conferred include August 2019, December 2019, January 2020, and May 2020. Sweeps are included in the counts below.

Mathematics Cont'd:	2018-19	2019-20
Applied Statistics MS	30	29
Applied Statistics MS Accelerated	1	1
Applied Statistics MS: Business & Marketing	0	2
Applied Statistics MS: Biostatistics/Bioinformatics	0	3
Mathematics MA	6	9
Mathematics MA Accelerated	0	1
Applied & Comp Math MS	3	0
Applied & Comp Math MS Accelerated	1	0
Mathematics Graduate Total	41	45
Mathematics Total	71	95

Pharmaceutical Product Development:

Pharmaceutical Product Dev BS	18	16
Pharmaceutical Product Development Undergraduate Total	18	16
Pharmaceutical Product Development Total	18	16

Physics:

Physics BS	6	14
Physics-Engineering BS	6	9
Physics Undergraduate Total	12	23
Physics Total	12	23

Political Science:

Political Science: Applied Public Policy BA	4	2
Political Science : International Relations BA	20	18
Political Science: Gov. and Pol.	32	31
Political Science Undergraduate Total	56	51
Political Science Total	56	51

Degrees Conferred in 2018-19 and 2019-20

Counts include Baccalaureate (Primary and Secondary Major), Master's, and Doctoral degrees awarded in an Academic Year. For example, the 2019-20 degrees conferred include August 2019, December 2019, January 2020, and May 2020. Sweeps are included in the counts below.

Psychology:	2018-19	2019-20
Psychology BA	225	208
Psychology BS	0	35
Psychology Undergraduate Total	225	243
Psychology: Clinical MA	2	3
Psychology: Clinical MS	0	4
Psychology: General MA	11	10
Psychology: Industrial/Organizational MA	11	19
Psychology Graduate Total	24	36
Psychology Total	249	279
College of Science & Mathematics Undergraduate Total	683	672
College of Science & Mathematics Graduate Total	98	104
College of Sciences & Mathematics Total	781	776

University College

Liberal Studies Program:

Liberal Studies: Arts & Humanities BA	19	8
Liberal Studies: Science/Math BS	13	11
Liberal Studies Program Undergraduate Total	32	19
Liberal Studies Program Total	32	19

Professional Studies Program:

Liberal Studies: Profession BS	154	153
Professional Studies Program Undergraduate Total	154	153
Professional Studies Program Total	154	153
University College Undergraduate Total	186	172
University College Graduate Total	0	0
University College Total	186	172

Degrees Conferred in 2018-19 and 2019-20

Counts include Baccalaureate (Primary and Secondary Major), Master's, and Doctoral degrees awarded in an Academic Year. For example, the 2019-20 degrees conferred include August 2019, December 2019, January 2020, and May 2020. Sweeps are included in the counts below.

	2018-19	2019-20
University Undergraduate Total	3,765	3,494
University Graduate Total	936	1,043
University Doctorate Total	26	32
University Total	4,727	4,569



TUITION & FEES

Tuition and Fees by Semester

Tuition Category	2015-16	2016-17	2017-18	2018-19	2019-20	2020-21
Undergraduate Tuition						
Full-Time In-State	\$ 3,530.00	\$ 3,619.00	\$ 3,746.00	\$ 3,858.00	\$ 3,858.00	\$ 3,858.00
Full-Time Out-of-State	\$ 8,825.00	\$ 9,048.00	\$ 9,365.00	\$ 9,645.00	\$ 9,645.00	\$ 9,645.00
Per Credit In-State	\$ 294.00	\$ 302.00	\$ 312.00	\$ 322.00	\$ 322.00	\$ 322.00
Per Credit Out-of-State	\$ 735.00	\$ 754.00	\$ 780.00	\$ 805.00	\$ 805.00	\$ 805.00
Undergraduate Fees						
Full-Time In-State	\$ 1,200.78	\$ 1,241.20	\$ 1,309.33	\$ 1,347.88	\$ 1,352.57	\$ 1,377.53
Full-Time Out-of-State	\$ 1,314.78	\$ 1,358.20	\$ 1,430.33	\$ 1,472.88	\$ 1,477.57	\$ 1,502.53
Per Credit In-State	\$ 100.90	\$ 103.76	\$ 109.77	\$ 112.41	\$ 112.80	\$ 114.88
Per Credit Out-of-State	\$ 109.90	\$ 113.76	\$ 119.77	\$ 122.41	\$ 122.80	\$ 124.88
Graduate Tuition						
Full-Time In-State	\$ 4,230.00	\$ 4,347.00	\$ 4,500.00	\$ 4,644.00	\$ 4,644.00	\$ 4,644.00
Full-Time Out-of-State	\$ 6,345.00	\$ 6,525.00	\$ 6,750.00	\$ 6,966.00	\$ 6,966.00	\$ 6,966.00
Per Credit In-State	\$ 470.00	\$ 483.00	\$ 500.00	\$ 516.00	\$ 516.00	\$ 516.00
Per Credit Out-of-State	\$ 705.00	\$ 725.00	\$ 750.00	\$ 774.00	\$ 774.00	\$ 774.00
Graduate Fees*						
Full-Time In-State	\$ 1,156.13	\$ 1,199.55	\$ 1,479.65	\$ 1,521.25	\$ 1,525.94	\$ 1,550.90
Full-Time Out-of-State	\$ 1,264.13	\$ 1,307.55	\$ 1,587.65	\$ 1,629.25	\$ 1,633.94	\$ 1,698.90
Per Credit In-State	\$ 114.75	\$ 119.05	\$ 149.79	\$ 153.94	\$ 154.46	\$ 152.46
Per Credit Out-of-State	\$ 126.75	\$ 131.05	\$ 161.79	\$ 165.94	\$ 182.77	\$ 164.46
Residence Halls						
Meal Plan**	\$ 1,326.57	\$ 1,396.54	\$ 1,471.00	\$ 1,489.00	\$ 1,489.00	\$ 1,302.88

*For information about special graduate program rates, and tuition & fees for Doctoral and Philadelphia campus programs please visit https://wcupa.edu/_information/AFA/Fiscal/Bursar/newStudentsFallSpringGrad.aspx .

**14 Meals per week + \$250 Flex Dollars.

For detail information on meal plans https://wcupa.edu/_information/AFA/Fiscal/Bursar/FallSpringRoomBoard.aspx



LIBRARY RESOURCES

Library Statistics

FY 2016-2017 through 2019-2020

Holdings	2016-2017	2017-2018	2018-2019	2019-20	One Year Difference
Library Holdings					
Volumes	719,762	740,365	715,684	810,427	94,743
Microforms	768,443	193,476	153,690	154,818	1,128
E-Books	1,011,585	1,068,805	1,184,874	1,452,600	267,726
Audio/Video units*	1,098,632	46,695	40,952	41,872	920
Circulation (General & Reserve)	51,364	30,385	26,567	18,399	-8,168
Holdings Total	3,400,916	2,127,742	2,177,077	2,381,296	204,219
Total FTE Staff (includes student assistants)	47.00	48.00	48.00	47.00	-1.00

*Includes tapes, CDs, DVDs

Other Library Materials	2017-2018	2018-2019	2019-20
Items Digitized by WCU Library	48,016	48,016	48,016
Digital Art Images	N/A	N/A	N/A
Digital Pamphlets, Reports, etc.	N/A	N/A	N/A
Digital Manuscript Pages	N/A	N/A	N/A

A large purple graphic element consisting of a vertical bar on the right and a horizontal bar crossing it, forming a cross-like shape.

FACULTY, STAFF AND ADMINISTRATION

Total University Employees Fall 2019

Total University Employees by Employment Status: Fall 2019

Employment Status	#	%
Full-Time	1,593	80.2%
Part-Time	393	19.8%
Total	1,986	100.0%

Total University Employees by Gender: Fall 2019

Gender	#	%
Female	1,143	57.6%
Male	843	42.4%
Total	1,986	100.0%

All charts updated 09/04/2020.

Total University Employees Fall 2019

Total University Employees by Race/Ethnicity by Gender: Fall 2019

Race/Ethnicity	Female		Male		Total by Race/Ethnicity	
	#	%	#	%	#	% <i>within Total</i>
American Indian or Alaska Native	2	66.7	1	33.3	3	0.2
Asian	45	48.9	47	51.1	92	4.6
Black or African American	126	58.6	89	41.4	215	10.8
Hispanic	35	53.0	31	47.0	66	3.3
Native Hawaiian or Other Pacific Islander	0	-	1	100.0	1	0.1
Nonresident Alien (NRA)	18	50.0	18	50.0	36	1.8
Two or more races	4	50.0	4	50.0	8	0.4
White	913	58.3	652	41.7	1,565	78.8
Total by Gender	1,143	57.6	843	42.4	1,986	100.0

All charts updated 09/04/2020.

Total Instructional Faculty Fall 2019

Total Instructional Faculty by Tenure Status: Fall 2019

Tenure Status	#	%
Tenured	441	44.4%
On-Tenure Track	171	17.2%
Not on Tenure-Track	381	38.4%
Total	993	100.0%

Total Instructional Faculty by Tenure Status by Gender: Fall 2019

Instructional Faculty by Tenure Status and Gender	Tenured		On-Tenure Track		Not on Tenure-Track		Total by Gender	
	#	%	#	%	#	%	#	% <i>within Total</i>
Female	236	43.2	94	17.2	216	39.6	546	55.0
Male	205	45.9	77	17.2	165	36.9	447	45.0
Total by Tenure Status	441	44.4	171	17.2	381	38.4	993	100.0

All charts updated 09/04/2020.

Total Instructional Faculty Fall 2019 (continued)

Total Instructional Faculty by Tenure Status by Race/Ethnicity: Fall 2019

Instructional Faculty by Tenure Status and Race/Ethnicity	Tenured		On-Tenure Track		Not on Tenure-Track		Total by Race/Ethnicity	
	#	%	#	%	#	%	#	% within Total
American Indian or Alaska Native	0	-	0	-	0	-	0	-
Asian	33	54.1	16	26.2	12	19.7	61	6.1
Black or African American	19	40.4	10	21.3	18	38.3	47	4.7
Hispanic	14	45.2	7	22.6	10	32.3	31	3.1
Native Hawaiian or Other Pacific Islander	0	-	0	-	0	-	0	-
Nonresident Alien (NRA)	13	46.4	15	53.6	0	-	28	2.8
Two or more races	0	-	0	-	1	100.0	1	0.1
White	362	43.9	123	14.9	340	41.2	825	83.1
Total by Tenure Status	441	44.4	171	17.2	381	38.4	993	100.0

All charts updated 09/04/2020.

Total Staff/Administration Employees Fall 2019

Total Staff/Administration Employees by Gender: Fall 2019

Gender	#	%
Female	597	60.1%
Male	396	39.9%
Total	993	100.0%

Total Staff/Administration Employees by Race/Ethnicity: Fall 2019

Race/Ethnicity	#	%
American Indian or Alaska Native	3	0.3%
Asian	31	3.1%
Black or African American	168	16.9%
Hispanic	35	3.5%
Native Hawaiian or Other Pacific Islander	1	0.1%
Nonresident Alien (NRA)	8	0.8%
Two or more races	7	0.7%
White	740	74.5%
Total	993	100.0%

Instructional faculty are excluded in the above tables.

All charts updated 09/04/2020.

For questions /comments or recommendations for other data to include in the Fact Book, please contact Nilima Inamdar, Office of Institutional Research, WCU, 887, Matlack Street, West Chester PA 19381. Email: ninamdar@wcupa.edu Phone: 610-436-2456.