

West  
Chester  
University

# Fact Book 2009

West Chester University  
of Pennsylvania





**West Chester University of Pennsylvania  
Office of Institutional Research**

**809 Roslyn Avenue  
West Chester, PA 19383  
Telephone 610/436-2172**

---

**Fax 610/436-2635**

## **Introduction & Acknowledgements**

This Fact Book provides some of the most commonly requested information about West Chester University. Much of the information is drawn from the University's database and state mandated reports. Other offices and sources used are cited throughout the document. The cooperation of those offices and sources is much appreciated.

The Fact Book is divided into several chapters: Admissions, Enrollment, Retention/graduation rates, Academic degree programs & accredited programs, Graduation/degree information, and Resources (including financial aid), services and facilities.

Comments and suggestions about additional information that might be included are much appreciated. As such, a fact book evaluation form is included. Completed evaluation forms can be returned to the Office of Institutional Research.

Additional institutional information is available on the World Wide Web: <http://www.wcupa.edu>.



# Table of Contents

<b>GENERAL INFORMATION</b>	
<i>About the University and Its Mission</i>	6
<i>West Chester University Organizational Chart</i>	9
<b>ADMISSIONS</b>	
<i>Undergraduate Admissions Standards</i>	11
<i>Admission Application Statistics</i>	12
<i>First Time Full-Time Freshmen by Admission Type</i>	13
<i>Admission Yield Statistics: Fall 2009</i>	13
<i>First-Time Freshmen Admission Yield</i>	13
<i>First-Time Transfer Admission Yield</i>	14
<i>SAT Score Distribution- Fall 2008</i>	16
<i>SAT Average Scores</i>	17
<b>ENROLLMENT</b>	
<i>Head Count Enrollment: Fall 2005 to 2009</i>	19
<i>Enrollment by State: Fall 2006 to Fall 2009</i>	21
<i>Enrollment by Pennsylvania County of Residence: Fall 2009</i>	23
<i>Feeder High Schools: Fall 2009</i>	24



## Table of Contents (continued)

<i>Transfer Students Feeder Colleges: Fall 2009</i> .....	25
<i>Head Count Enrollment by Race/Ethnicity and Gender</i> .....	26
<i>Head Count Enrollment by College</i> .....	28
<i>Head Count Enrollment by Level</i> .....	29
<i>Credit Hours and Student FTE Enrollment</i> .....	30
<b>RETENTION AND GRADUATION</b> .....	
<i>Retention &amp; Graduation Rates for First-Time, Full-Time Freshmen: University sum</i> .....	32
<i>Second-Year Retention Rates for First-Time, Full-Time Freshmen by Race/Ethnicity and by Gender</i> .....	33
<i>Four and Six-Year Graduation Rates by Race/Ethnicity and by Gender</i> .....	34
<b>ACADEMIC AND DEGREE PROGRAMS</b> .....	
<i>Undergraduate Degrees and Majors</i> .....	30
<i>Graduate Degrees and Majors</i> .....	37
<i>Professional and Program Accreditations</i> .....	33
<b>DEGREES CONFERRED</b> .....	42
<b>REOURCES, SERVICES &amp; FACILITIES</b> .....	52



## Quick Facts

*West Chester University*  
*West Chester, PA 19383*  
*Telephone 610/436-1000*  
*<http://www.wcupa.edu/>*

---

<b>Founded</b>	1871
<b>President</b>	Dr. Greg R. Weisenstein
<b>University Accreditation</b>	Middle States Commission on Higher Education (MSCHE)
<b>Fall 2009 Enrollment</b>	
Undergraduate	11,920
Graduate	2,291
<b>Fall 2009 Credit Hours</b>	
Undergraduate	11,342.1
Graduate	1,427.1
<b>Authorized Degree Programs</b>	187
<b>Degrees Awarded in 2008-2009</b>	
Bachelors	2,552
Masters	617
<b>Library Collections</b>	109,138

---



# GENERAL INFORMATION



## About the University and Its Mission

### **The West Chester University Mission Statement**

West Chester University, a member of the Pennsylvania State System of Higher Education, is a public, regional, comprehensive institution committed to providing access and offering high-quality undergraduate education, select post-baccalaureate and graduate programs, and a variety of educational and cultural resources for its students, alumni, and citizens of southeastern Pennsylvania.

### **The West Chester University Values Statement**

West Chester University is committed to attracting, enrolling, and graduating quality students from a wide variety of educational, cultural, and economic backgrounds. This endeavor requires the University to attract and retain highly qualified faculty and staff and to provide each member of the University community with learning and leadership development opportunities. To this end, the University supports and encourages programs which benefit all people and which seek to eradicate discrimination and injustice. We treasure what we believe to be the highest principles of American society: the worth and uniqueness of each individual, the belief that success is to be earned by individual effort put forth in an environment founded on equality of opportunity, and the appreciation of the ideal of an inclusive society.

We believe that it is incumbent upon all members of our community—staff, students, faculty and administrators—to conduct themselves with civility toward one another at all times. We value the special talents and contributions of each member of our community. We further affirm the worth and dignity of each member and the shared responsibility of all to treat each other as individuals, with respect and courtesy.

As a university owned by the citizens of Pennsylvania, we value our mission to provide the best educational opportunities possible which will enable the University community to successfully address the concerns of a global society. To this end, West Chester



University seeks to provide diligent advising for students and to focus on teaching students to think clearly and critically, to make logical and ethical judgments, and to communicate effectively with others.

West Chester University's community strongly supports the principles of academic integrity and academic responsibility, viewing both as the province of every member of the campus community. We hold the highest esteem for teaching directed toward student learning and affirm that mastery of content as well as mastery of teaching skills necessary to communicate such content are paramount.

This values statement is intended to be a living document which will serve West Chester University as it changes and evolves in the coming years.

### **About West Chester University of Pennsylvania**

West Chester University offers bachelors and masters degrees in the arts and sciences, teacher training and certification, advanced study preparation in fields such as medicine and law, education for specific professions, and continuing education.

Total enrollment at West Chester University includes approximately 11,920 undergraduate students and 2,291 graduate students. While most undergraduates are recent high school graduates preparing for career objectives, many others are older individuals, including veterans and homemakers, who either never before had the opportunity for a college education or whose schooling was interrupted.

Most students are residents of Pennsylvania but students from other states and foreign countries are welcome. The student body at West Chester University represents a cross section of many ethnic, racial, and religious groups and includes students from all socioeconomic levels.

Like the world around it, West Chester University is constantly transforming. The school continues to broaden and modify the nature and number of its programs to reflect the needs of its students in their endeavor to prepare themselves for success and fulfillment in life.





## **The History of West Chester University of Pennsylvania**

Founded in 1871, West Chester University began as West Chester Academy, a private, state-aided school that existed from 1812 to 1869. The academy enjoyed strong support from the highly intellectual Chester County Cabinet of the Natural Sciences of the pre-Civil War decades. It was recognized as one of Pennsylvania's leading preparatory schools, and its experience in teacher training laid the groundwork for the normal school years that were to follow.

As the state began to take increasing responsibility for public education, the academy was transformed into West Chester Normal School, still privately owned but state certified. The normal school admitted its first class, consisting of 160 students, on September 25, 1871. In 1913, West Chester became the first of the normal schools to be owned outright by the Commonwealth.

West Chester became West Chester State Teachers College in 1927 when Pennsylvania initiated a four-year program of teacher education. In 1960, as the Commonwealth paved the way for liberal arts programs in its college system, West Chester was renamed West Chester State College, and two years later introduced the liberal arts program that turned the one-time academy into a comprehensive college.

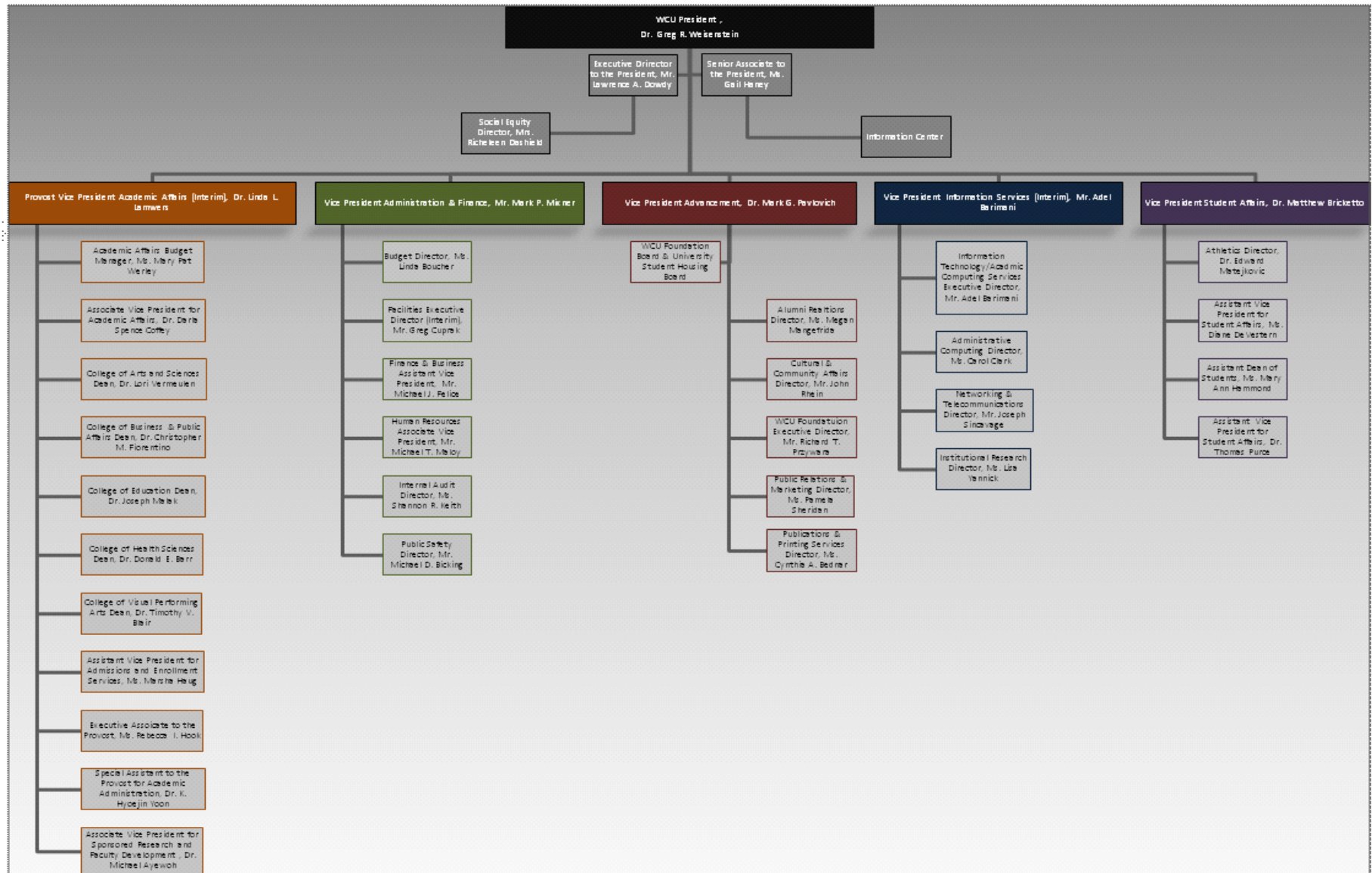
In recognition of the historic merit of the campus, in 1981 the West Chester State College Quadrangle Historic District was placed on the National Register of Historic Places. The buildings included in this historic district are Philips Memorial Building, Ruby Jones Hall, Recitation Hall, and the Old Library. Except for Philips, these buildings are all constructed of native Chester County serpentine stone.

West Chester State achieved another major milestone with passage of the State System of Higher Education bill. West Chester became one of the 14 universities in the State System of Higher Education on July 1, 1983. Along with its new name -- West Chester University of Pennsylvania of the State System of Higher Education -- the institution acquired a new system of governance and the opportunity to expand its degree programs.

<http://www.wcupa.edu/>



# West Chester University Organizational Chart



# ADMISSIONS



## Undergraduate Admissions Standards

West Chester University prides itself on the holistic approach used in evaluating applicant credentials. Each application is reviewed individually, and we carefully consider scholastic performance and academic preparation to determine an individual's potential for success.

For regular admission as a first-year student we recommend successful completion of a college preparatory curriculum in high school, honors and AP classes are a plus, rank in class in the 50th percentile or better, a grade point average of 3.00+, and a minimum combined SAT score of 1000 or better (prefer a minimum of 500 in both verbal and math.) It is important to realize that these factors are guidelines for consideration. The academic profile of the regular admits who enroll at West Chester University is a mean SAT combined score of 1,000, a rank in the top third of their class or 68% percentile, and a grade point average of 3.39.

Applicants who do not meet regular admissions standards may be considered for a special admissions program if appropriate or denied admission and counseled to enroll at another college or university for a minimum of 24-30 credits before reapplying as a transfer student.

Transfer applicants must have a minimum grade point average of 2.00 for admissions consideration. The majority of our transfers have a Cumulative GPA of 2.50 or better prior to transferring to the University. Some of our academic programs require a higher grade point average and specific course prerequisites. Community college of Pennsylvania students who have earned an Associate of Arts or Associate of Science degree and students who have completed 12 or more transferable credits from a State System University with a 2.00 or above have an Academic Passport that provides entry into any university in the State System of Higher Education. For more information on admissions requirements and the Academic Passport, please contact the Office Admissions at (610) 436-3411 or e-mail [ugadmiss@wcupa.edu](mailto:ugadmiss@wcupa.edu)



## Admission Application Statistics- Fall 2009

Applications, Acceptances, and Enrollment of First-Time Freshmen by Ethnicity and Gender

	Fall 2008			Fall 2009			Total	
	Male	Female	Total	Male	Female	Total	Change	%Change
<b>African American</b>								
Applied	570	1,136	1,706	579	1188	1767	61	3.6%
Accepted	155	332	487	164	321	485	-2	-0.4%
Enrolled	69	132	201	73	105	178	-23	-11.4%
<b>Native American</b>								
Applied	13	30	43	9	25	34	-9	-20.9%
Accepted	5	19	24	4	17	21	-3	-12.5%
Enrolled	2	3	5	1	5	6	1	20.0%
<b>Asian</b>								
Applied	111	180	291	167	214	381	90	30.9%
Accepted	57	97	154	71	121	192	38	24.7%
Enrolled	15	27	42	17	22	39	-3	7.1%
<b>Hispanic</b>								
Applied	173	350	523	176	357	533	10	1.9%
Accepted	78	193	271	89	182	271	0	0.0%
Enrolled	26	64	90	29	56	85	-5	-5.5%
<b>Caucasian</b>								
Applied	4,027	6,483	10,510	4,109	6,536	10,645	135	1.3%
Accepted	2,017	3,287	5,304	2,114	3,507	8,621	347	6.5%
Enrolled	644	994	1,638	752	1,156	1,908	270	16.5%
<b>NRA/Not Supplied</b>								
Applied	122	158	280	111	144	255	-25	-8.9%
Accepted	36	41	77	33	44	77	0	0.0%
Enrolled	6	11	17	16	9	25	8	47.1%
<b>Total</b>								
Applied	<b>5,016</b>	<b>8,337</b>	<b>13,353</b>	<b>5,151</b>	<b>8,464</b>	<b>13,615</b>	<b>262</b>	<b>2.0%</b>
Accepted	<b>2,348</b>	<b>3,969</b>	<b>6,317</b>	<b>2,475</b>	<b>4,192</b>	<b>6,697</b>	<b>380</b>	<b>6.0%</b>
Enrolled	<b>762</b>	<b>1,231</b>	<b>1,993</b>	<b>888</b>	<b>1,353</b>	<b>2,241</b>	<b>248</b>	<b>12.4%</b>



## First-Time, Full-Time Freshmen by Admission Type

Admittance Type	2005		2006		2007		2008		2009	
	N	%	N	%	N	%	N	%	N	%
Regular	1,568	82.5	1,564	83.0	1,568	82.5	1,564	83.0	1847	82.4
ADP ACT 101	42	2.2	48	2.5	42	2.2	48	2.5	54	2.4
ADP Non- ACT 101	77	4.1	79	4.2	77	4.1	79	4.2	109	4.9
Special Admission	214	11.3	194	10.3	214	11.3	194	10.3	231	10.3
<b>Total</b>	<b>1,901</b>		<b>1,885</b>		<b>1,901</b>		<b>1,885</b>		<b>2,241</b>	

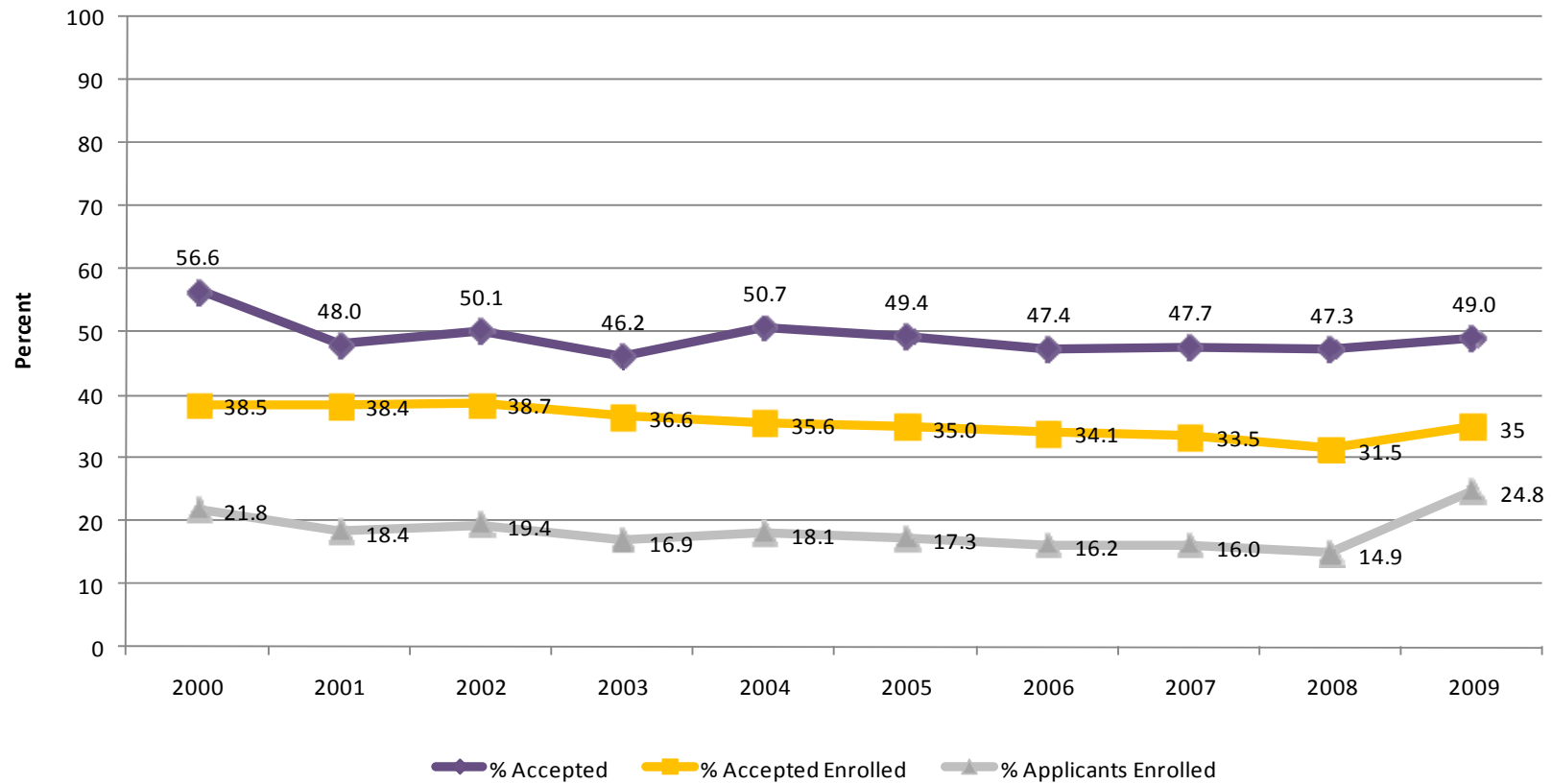
## Admission Yield Statistics: Fall 2009

### First-Time Freshmen Admission Yield

Year	# of Applicants	# Accepted	% Accepted	# Full-Time Enrolled	% of Accepted Enrolled	% of Applicants Enrolled
2000	7,891	4,466	56.6	1,721	38.5	21.8
2001	8,851	4,245	48.0	1,631	38.4	18.4
2002	9,100	4,563	50.1	1,768	38.7	19.4
2003	10,207	4,720	46.2	1,729	36.6	16.9
2004	10,401	5,273	50.7	1,879	35.6	18.1
2005	11,013	5,438	49.4	1,901	35.0	17.3
2006	11,669	5,530	47.4	1,885	34.1	16.2
2007	12,237	5,834	47.7	1,957	33.5	16.0
2008	13,353	6,317	47.2	1,993	31.5	14.9
2009	13,615	6,667	49.0	3,383	35.0	24.8
<b>5-YR</b>	<b>30.90</b>	<b>26.44</b>	<b>-3.4%</b>	<b>80.04</b>	<b>-1.7%</b>	<b>37.0%</b>
<b>1-YR</b>	<b>1.96</b>	<b>53.03</b>	<b>1.0%</b>	<b>69.74</b>	<b>6.5%</b>	<b>7.3%</b>



## First-Time Freshmen Admission Yield



## First-Time Transfer Admission Yield

Year	# of Applicants	# Accepted	% Accepted	# Enrolled	% of Accepted Enrolled	% of Applicants Enrolled
2000	1,909	1,319	69.1	914	69.3	47.9
2001	2,127	1,339	63.0	893	66.7	42.0
2002	2,189	1,375	62.8	886	64.4	40.5
2003*	2,578	1,444	56.0	904	62.6	35.1
2004*	2,638	1,468	55.6	961	65.5	36.4
2005*	2,673	1,487	55.6	962	64.7	36.0
2006*	2,690	1,514	56.3	948	62.6	35.2
2007*	2,839	1,589	56.0	974	61.3	34.3
2008*	3,224	1,609	49.9	1,070	66.5	33.2
2009*	<b>3,639</b>	<b>1,821</b>	<b>50.0</b>	<b>1,176</b>	<b>64.6</b>	<b>32.3</b>
<b>5-YR</b>	<b>37.95%</b>	<b>24.05</b>	<b>-5.6%</b>	<b>22.37%</b>	<b>-0.9%</b>	<b>-4.1%</b>
<b>1-YR</b>	<b>12.87%</b>	<b>13.18</b>	<b>0.1%</b>	<b>9.91%</b>	<b>-1.9%</b>	<b>-0.9%</b>

\* Definition of Transfer for SSHE includes those who enrolled previously as non-degree





## First-Time Transfer Admission Yield



## SAT Score Distribution: Fall 2008

### SAT- Verbal Distribution

Score	2005		2006		2007		2008		2009	
	N	%	N	%	N	%	N	%	N	%
700 - 800	20	1.1	21	1.1	20	1.1	21	1.1	26	1.5
600 - 699	294	15.5	252	13.4	294	15.5	252	13.4	287	13.0
500 - 599	1,058	55.7	1,036	55.0	1,058	55.7	1,036	55.0	1,207	52.6
400 - 499	492	25.9	539	28.6	492	25.9	539	28.6	654	29.7
300 - 399	35	2	37	2	35	2	37	2	67	3.0
200 - 299	0	0	0	0	0	0	0	0	0	0
No Scores	2	0	0	0	2	0	0	0	0	0
<b>Total</b>	<b>1,879</b>		<b>1,901</b>		<b>1,885</b>		<b>1,957</b>		<b>2,241</b>	



### SAT- Mathematics Distribution

Score	2005		2006		2007		2008		2009	
	N	%	N	%	N	%	N	%	N	%
700 - 800	16	0.8	27	1.4	16	0.8	27	0.9	26	1.2
600 - 699	307	16.1	315	16.7	307	16.1	315	17.7	532	17.6
500 - 599	1,085	57.1	1,056	56.0	1,085	57.1	1,056	53.8	1223	54.6
400 - 499	459	24.1	436	23.1	459	24.1	436	24.0	394	23.6
300 - 399	32	1.7	50	2.7	32	1.7	50	3.5	66	2.9
200 - 299	0	0.0	1	0.1	0	0.0	1	0.1	0	0
No Scores	2	0.1	0	0.0	2	0.1	0	0.0	0	0
<b>Total</b>	<b>1,879</b>		<b>1,901</b>		<b>1,885</b>		<b>1,957</b>		<b>2,241</b>	

### SAT Average Scores

	Verbal				Math				Combined			
	WCU	PA	US	WCU - PA Difference	WCU	PA	US	WCU - PA Difference	WCU	PA	US	WCU - PA Difference
Fall 2009	523				535				1,058			
Fall 2008	523	494	502	29	535	501	515	34	1,058	995	1,017	63
Fall 2007	525	493	502	32	533	499	515	34	1,058	992	1,017	66
Fall 2006	527	493	503	34	535	500	518	35	1,062	993	1,021	69
Fall 2005	532	501	508	31	535	503	520	32	1,067	1,004	1,028	63
Fall 2004	529	501	508	28	532	502	518	30	1,061	1,003	1,026	58
Fall 2003	528	500	507	28	530	502	519	28	1,058	1,002	1,026	56
Fall 2002	519	498	504	15	526	500	516	10	1,045	998	1,020	10
Fall 2001	522	500	506	16	525	499	514	11	1,047	999	1,020	11
Fall 2000	516	498	505	11	516	497	514	2	1,032	995	1,019	2

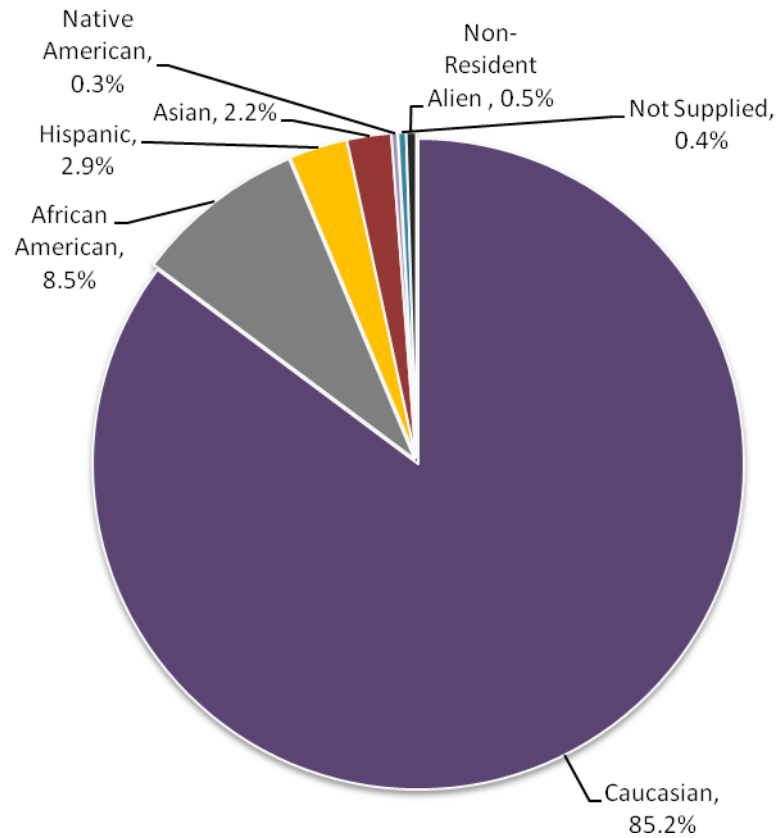


# ENROLLMENT

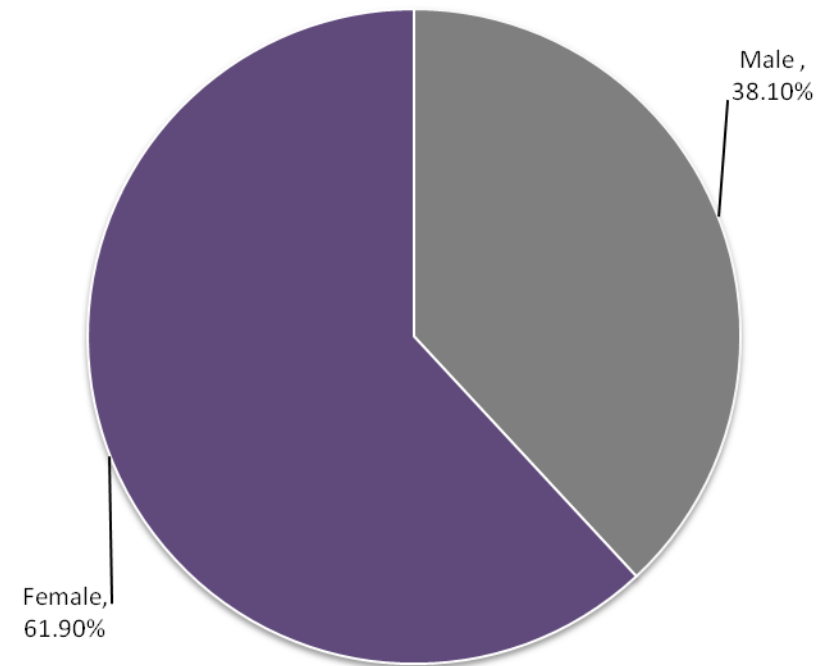


## Head Count Enrollment by Ethnicity and Gender: Fall 2009

**Enrollment by Ethnicity, 2009 (N = 14,211)**

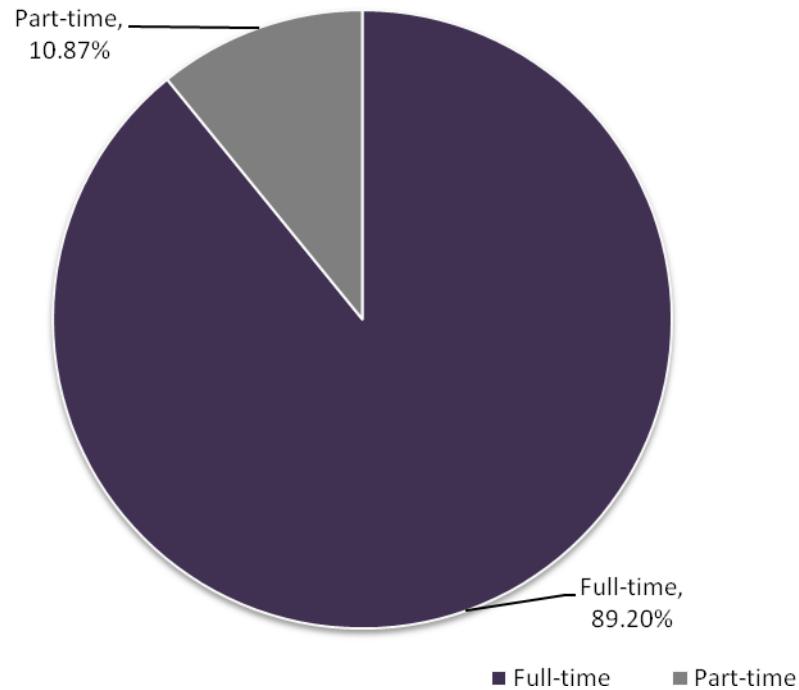


**Enrollment by Gender, 2009 (N = 14,211)**

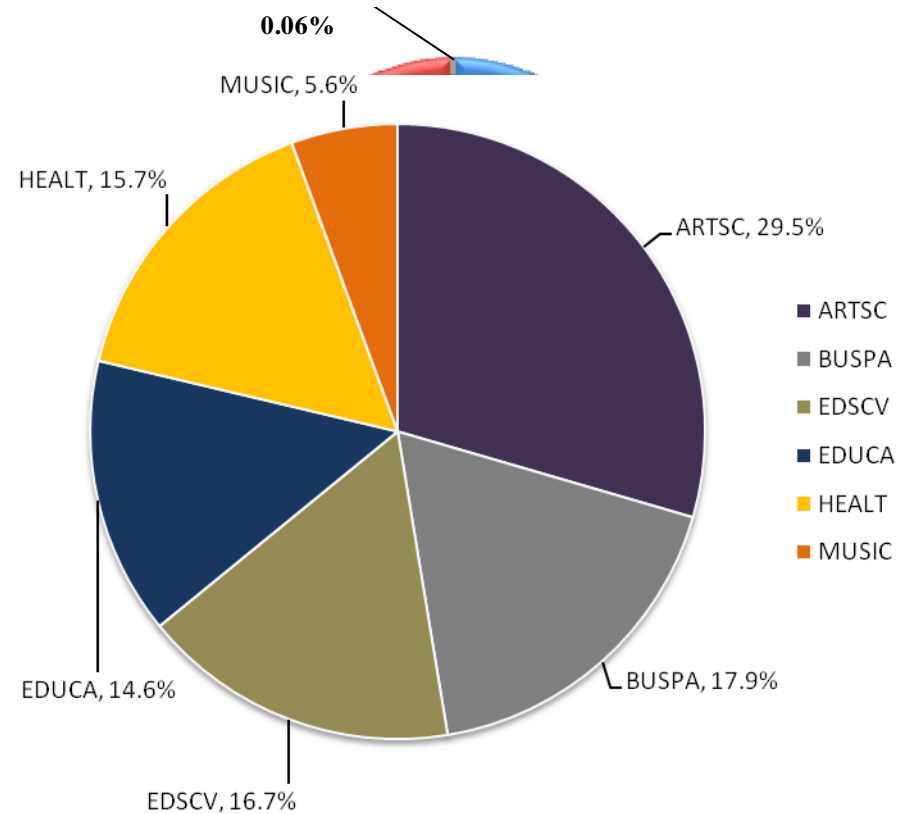


## Head Count Enrollment by Status and College: Fall 2009

**Enrollment by Status, 2009**  
Degree-seeking only (N = 14,211)



**Enrollment by College, 2009**  
(N = 14,211)



## Enrollment by State: Fall 2006 to Fall 2009

STATE	Fall 2006			Fall 2007			Fall 2008			Fall 2009			Rank
	U-Grad	Grad	Total	U-Grad	Grad	Total	U-Grad	Grad	Total	U-Grad	Grad	Total	
Arizona	0	0	0	0	0	0	0	0	0	0	0	0	
Arkansas	0	0	0	0	0	0	0	0	0	0	0	1	
California	5	0	5	5	0	5	5	0	5	5	0	5	
Colorado	1	1	2	1	1	2	1	1	2	1	1	2	
Connecticut	12	2	14	12	2	14	12	2	14	12	2	14	
Delaware	131	43	174	131	43	174	131	43	174	131	43	174	3
District of Columbia	0	0	0	0	0	0	0	0	0	0	0	0	
Florida	4	1	5	4	1	5	4	1	5	4	1	5	
Georgia	1	1	2	1	1	2	1	1	2	1	1	2	
Hawaii	0	0	0	0	0	0	0	0	0	0	0	0	
Idaho	2	0	2	2	0	2	2	0	2	2	0	2	
Illinois	2	0	2	2	0	2	2	0	2	2	0	2	
Indiana	0	0	0	0	0	0	0	0	0	0	0	0	
Iowa	0	0	0	0	0	0	0	0	0	0	0	0	
Kansas	0	0	0	0	0	0	0	0	0	0	0	0	
Kentucky	1	0	1	1	0	1	1	0	1	1	0	1	
Louisiana	0	0	0	0	0	0	0	0	0	0	0	0	
Maine	1	0	1	1	0	1	1	0	1	1	0	1	
Maryland	59	5	64	59	5	64	59	5	64	59	5	64	4
Massachusetts	3	0	3	3	0	3	3	0	3	3	0	3	
Michigan	1	1	2	1	1	2	1	1	2	1	1	2	
Minnesota	1	0	1	1	0	1	1	0	1	1	0	1	
Mississippi	1	0	1	1	0	1	1	0	1	1	0	1	
Missouri	0	0	0	0	0	0	0	0	0	0	0	0	
Montana	0	0	0	0	0	0	0	0	0	0	0	0	
Nebraska	1	0	1	1	0	1	1	0	1	1	0	1	
Nevada	1	0	1	1	0	1	1	0	1	1	0	1	
New Hampshire	3	1	4	3	1	4	3	1	4	3	1	4	





## Enrollment by State: Fall 2006 to Fall 2009 (continued)

STATE	Fall 2006			Fall 2007			Fall 2008			Fall 2009			Rank
	U-Grad	Grad	Total	U-Grad	Grad	Total	U-Grad	Grad	Total	U-Grad	Grad	Total	
New Jersey	953	75	1,028	953	75	1,028	953	75	1,028	1,067	65	1,131	2
New Mexico	0	0	0	0	0	0	0	0	0	0	0	0	
New York	37	6	43	37	6	43	37	6	43	47	15	62	5
North Carolina	2	1	3	2	1	3	2	1	3	2	1	3	
Ohio	2	2	4	2	2	4	2	2	4	6	2	8	
Oklahoma	0	0	0	0	0	0	0	0	0	0	0	0	
Oregon	0	1	1	0	1	1	0	1	1	0	0	0	
Pennsylvania	9,538	2,110	11,648	9,538	2,110	11,648	9,538	2,110	11,648	10,378	1,923	12,293	1
Puerto Rico	1	0	1	1	0	1	1	0	1	0	0	0	
Rhode Island	2	0	2	2	0	2	2	0	2	2	0	2	
South Carolina	1	0	1	1	0	1	1	0	1	2	1	3	
South Dakota	0	0	0	0	0	0	0	0	0	0	0	0	
Tennessee	1	0	1	1	0	1	1	0	1				
Texas	3	1	4	3	1	4	3	1	4	2	1	0	
Utah	0	0	0	0	0	0	0	0	0	2	1	3	
Vermont	0	0	0	0	0	0	0	0	0	0	0	0	
Virginia	18	6	24	18	6	24	18	6	24	18	1	19	
Washington	1	0	1	1	0	1	1	0	1				
West Virginia	0	0	0	0	0	0	0	0	0	0	0	0	
Wisconsin	0	0	0	0	0	0	0	0	0	1	0	0	
Foreign	29	47	76	29	47	76	29	47	76	1	1	2	
Unknown: DUR, GJ, 22. and 23	3	0	3	3	0	3	3	0	3	0	4	4	
Armed Forces										0	1		
Missing										145	195	340	
<b>TOTAL</b>	<b>10,821</b>	<b>2,304</b>	<b>13,125</b>	<b>10,821</b>	<b>2,304</b>	<b>13,125</b>	<b>10,821</b>	<b>2,304</b>	<b>13,125</b>	<b>11,920</b>	<b>2,291</b>	<b>14,211</b>	
IN-State	88.1%	91.6%	88.7%	88.1%	91.6%	88.7%	88.1%	91.6%	88.7%	87.1%	83.9%	86.5%	



## Enrollment by Pennsylvania County of Residence: Fall 2009 (Top 10 Counties with Most Enrollments Ranked)

County	Total	Percent	Rank
Adams	38	0.31	
Allegheny	37	0.30	
Armstrong	2	0.02	
Beaver	3	0.02	
Berks	481	3.91	6
Blair	11	0.09	
Bradford	13	0.11	
Bucks	1098	8.93	4
Butler	4	0.03	
Cambria	1	0.01	
Cameron	1	0.01	
Carbon	18	0.15	
Centre	15	0.12	
Chester	3380	27.48	1
Clarion	6	0.05	
Clinton	8	0.07	
Columbia	23	0.19	
Crawford	2	0.02	
Cumberland	172	1.40	
Dauphin	147	1.20	
Delaware	2267	18.43	2
Elk	2	0.02	
Erie	2	0.02	
Fayette	3	0.02	
Franklin	21	0.17	
Fulton	1	0.01	
Huntingdon	5	0.04	
Indiana	2	0.02	
Jefferson	1	0.01	
Juniata	3	0.02	
Lackawanna	132	1.07	
Lancaster	454	3.69	7

County	Total	Percent	Rank
Lancaster	454	3.69	7
Lawrence	1	0.01	
Lebanon	46	0.37	
Lehigh	269	2.19	9
Luzerne	115	0.93	
Lycoming	22	0.18	
McKean	1	0.01	
Mercer	3	0.02	
Mifflin	3	0.02	
Monroe	83	0.67	
Montgomery	1764	14.34	3
Montour	6	0.05	
Northampton	214	1.74	
Northumberland	23	0.19	
Perry	12	0.10	
Philadelphia	945	7.68	5
Pike	37	0.30	
Potter	1	0.01	
Schuylkill	76	0.62	
Snyder	11	0.09	
Somerset	4	0.03	
Sullivan	3	0.02	
Susquehanna	10	0.08	
Tioga	4	0.03	
Union	8	0.07	
Venango	1	0.01	
Washington	2	0.02	
Wayne	29	0.24	
Westmoreland	3	0.02	
Wyoming	5	0.04	
York	241	1.96	10
Missing	6	0.05	
<b>Total</b>	<b>12,301</b>	<b>100.00</b>	





## Feeder High Schools: Fall 2009

### Top Pennsylvania High Schools of Entering Freshmen

<i>School</i>	<i>Count</i>
CARDINAL O'HARA HIGH SCHOOL	54
NORTH PENN HIGH SCHOOL	41
DOWNINGTOWN HS WEST CAMPUS	37
BISHOP SHANAHAN HIGH SCHOOL	35
WEST CHESTER BAYARD RUSTIN HS	34
GARNET VALLEY HIGH SCHOOL	32
COATESVILLE AREA SENIOR HS	31
PENNSBURY HS EAST CAMPUS	29
DOWNINGTOWN HS EAST CAMPUS	28
ARCHBISHOP PRENDERGAST HS	25
NESHAMINY HIGH SCHOOL	23
SPRING-FORD SENIOR HIGH SCHOOL	23
PENNCREST HIGH SCHOOL	22
B REED HENDERSON HIGH SCHOOL	21
WEST CHESTER EAST HIGH SCHOOL	21
HAVERFORD HIGH SCHOOL	20
PENNRIDGE HIGH SCHOOL	20
AVON GROVE HIGH SCHOOL	19
COUNCIL ROCK HIGH SCHOOL NORTH	19
UNIONVILLE HIGH SCHOOL	18
UPPER DARBY HIGH SCHOOL	18
PARKLAND HIGH SCHOOL	17
PLYMOUTH-WHITEMARSH HS	17
SUN VALLEY HIGH SCHOOL	17
ABINGTON HIGH SCHOOL	16
ARCHBISHOP CARROLL HIGH SCHOOL	16
ARCHBISHOP WOOD HIGH SCHOOL	16
METHACTON HIGH SCHOOL	16
RIDLEY HIGH SCHOOL	16
WILLIAM TENNENT HIGH SCHOOL	16
CENTRAL BUCKS HIGH SCH SOUTH	15

<i>School</i>	<i>Count</i>
HEMPFIELD HIGH SCHOOL	15
MARPLE NEWTOWN HIGH SCHOOL	15
SPRINGFIELD HIGH SCHOOL	15
BOYERTOWN AREA SENIOR HS	14
CENTRAL BUCKS HIGH SCHOOL EAST	14
FATHER JUDGE HIGH SCHOOL	14
WILSON HIGH SCHOOL	14
DALLASTOWN AREA HIGH SCHOOL	13
INTERBORO HIGH SCHOOL	13
MANHEIM TOWNSHIP HIGH SCHOOL	13
UPPER DUBLIN HIGH SCHOOL	13
ABINGTON HEIGHTS HIGH SCHOOL	12
ARCHBISHOP RYAN HIGH SCHOOL	12
CENTRAL BUCKS HIGH SCHOOL WEST	12
HATBORO-HORSHAM SENIOR HS	12
LIBERTY HIGH SCHOOL	12
PERKIOMEN VALLEY HIGH SCHOOL	12
TWIN VALLEY HIGH SCHOOL	12
WARWICK HIGH SCHOOL	12
CHELTENHAM HIGH SCHOOL	11
EMMAUS HIGH SCHOOL	11
LOWER MORELAND HIGH SCHOOL	11
SOUDERTON AREA HIGH SCHOOL	11
BISHOP MCDEVITT HIGH SCHOOL	10
CHICHESTER HIGH SCHOOL	10
KENNETT HIGH SCHOOL	10
LOWER MERION HIGH SCHOOL	10
MARLBORO HIGH SCHOOL	10
NOTRE DAME HIGH SCHOOL	10
OWEN J ROBERTS HIGH SCHOOL	10
<b>TOTAL</b>	<b>2,241</b>



## Feeder Colleges: Fall 2009

Top Institutions Previously Attended by New Fall Undergraduate Transfer Students

[Excludes students who transitioned from non-degree to degree (T7) as well as Transfers with first degree at WCU(T8)]

Name	Count	Percent of Total	Type	State
Delaware Co Community College	303	26.56	2 Year Public	PA
Montgomery County Community College	120	10.52	2 Year Public	PA
Bucks County Community College	64	5.61	2 Year Public	PA
Pennsylvania St Univ University Park	35	3.07	4 Year Public	PA
Harrisburg Area Community College	32	2.80	2 Year Public	PA
Community College Philadelphia	28	2.45	2 Year Public	PA
Indiana University Pennsylvania	22	1.93	4 Year Public	PA
Kutztown University Of Pa	19	1.67	4 Year Public	PA
Temple University	19	1.67	4 Year Private	PA
Shippensburg University Pa	17	1.49	4 Year Public	PA
Lehigh Carbon Community College	14	1.23	2 Year Public	PA
Widener University	14	1.23	4 Year Private	PA
East Stroudsburg University Pa	13	1.14	4 Year Public	PA
Millersville University Pa	13	1.14	4 Year Public	PA
Bloomsburg University Of Pa	11	0.96	4 Year Public	PA
Neumann College	10	0.88	4 Year Private	PA
Northampton Co Area Community College	10	0.88	2 Year Public	PA
Reading Area Community College	10	0.88	2 Year Public	PA
York College Of Pa	10	0.88	4 Year Private	PA
University Delaware	9	0.79	4 Year Public	DE



## Head Count Enrollment: Fall 2005 to 2009

### Five-Year Enrollment by Ethnicity and Gender

#### Undergraduate

Ethnicity	2005		2006		2007		2008		2009	
	Male	Female	Male	Female	Male	Female	Male	Female	Male	Female
Caucasian	318	604	308	624	328	659	336	661	4,151	6,011
African American	15	14	18	12	13	19	13	21	371	674
Hispanic	80	110	80	130	96	124	99	131	121	253
Asian	93	188	108	193	109	193	115	226	101	134
Native American	3,672	5,679	3,626	5,675	3,768	5,768	3915	5896	13	23
Not Supplied	17	24	11	18	17	13	16	14	23	23
Nonresident Alien	6	12	4	9	-	4	0	2	9	13
Unknown	3	3	3	2	1	0	10	20	-	-
<b>Total</b>	<b>4,204</b>	<b>6,634</b>	<b>4,158</b>	<b>6,663</b>	<b>4,332</b>	<b>6,780</b>	<b>4,504</b>	<b>6,971</b>	<b>4,789</b>	<b>7,131</b>

#### Graduate Students

Ethnicity	2005		2006		2007		2008		2009	
	Male	Female	Male	Female	Male	Female	Male	Female	Male	Female
Caucasian	30	67	33	73	43	87	49	94	513	1,431
African American	1	2	1	-	1	0	0	2	58	112
Hispanic	18	34	13	27	15	31	23	32	6	31
Asian	8	14	7	16	6	25	4	30	22	52
Native American	469	1,461	433	1,410	431	1,398	477	1,361	1	4
Not Supplied	-	-	22	25	40	31	32	25	2	5
Nonresident Alien	1	1	1	-	2	-	1	0	24	30
Unknown	18	26	-	-	-	-	0	7	-	-
<b>Total</b>	<b>545</b>	<b>1,605</b>	<b>510</b>	<b>1,551</b>	<b>538</b>	<b>1,572</b>	<b>586</b>	<b>1,551</b>	<b>626</b>	<b>1,665</b>



## Head Count Enrollment: Fall 2005 to 2009 Enrollment by College

### Undergraduate Students

College	2005	2006	2007	2008	2009
College of Arts and Sciences	3,302	3,291	3,360	3468	3637
College of Business and Public Affairs	1,939	1,928	1,984	2094	2245
College of Education	1,433	1,447	1,400	1371	1330
College of Health Sciences	1,438	1,514	1,585	1761	1931
College of Visual & Performing Arts	731	717	704	728	724
Non-Degree/Undeclared	1,995	1,924	2,079	2062	2053
<b>Total</b>	<b>10,838</b>	<b>10,821</b>	<b>11,112</b>	<b>11,484</b>	<b>11,919</b>

### Graduate Students

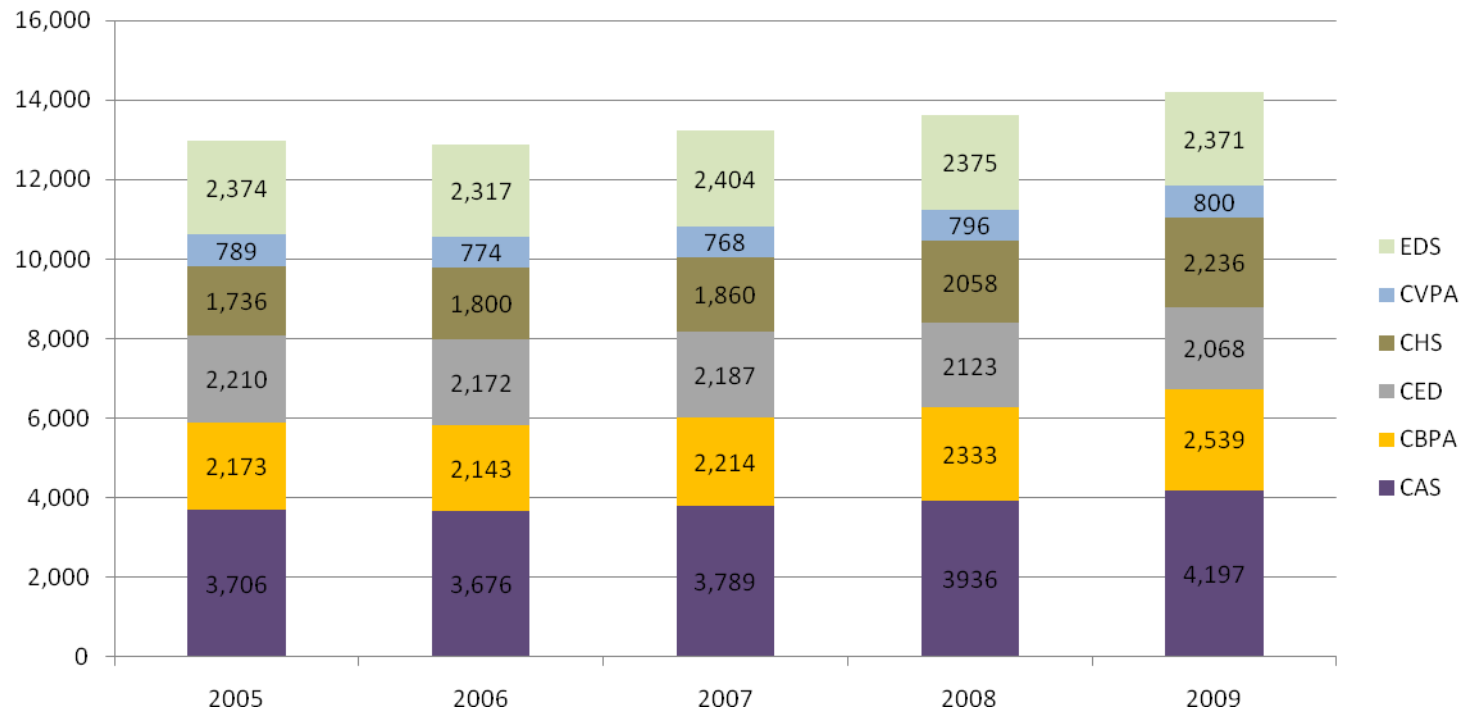
College	2005	2006	2007	2008	2009
College of Arts and Sciences	404	385	429	468	560
College of Business and Public Affairs	234	215	230	239	294
College of Education	777	725	787	752	738
College of Health Sciences	298	286	275	297	305
College of Visual & Performing Arts	58	57	64	68	76
Non-Degree/Undeclared	379	393	325	313	318
<b>Total</b>	<b>2,150</b>	<b>2,061</b>	<b>2,110</b>	<b>2,137</b>	<b>2,291</b>

## Graduate and Undergraduate Student Enrollment by College: Fall 2004 to 2009

College	2005	2006	2007	2008	2009
College of Arts and Sciences	3,706	3,676	3,789	3,936	4,197
College of Business and Public Affairs	2,173	2,143	2,214	2,333	2,539
College of Education	2,210	2,172	2,187	2,123	2,068
College of Health Sciences	1,736	1,800	1,860	2,058	2,236
College of Visual & Performing Arts	789	774	768	796	800
Non-Degree/Undeclared	2,374	2,317	2,404	2,375	2,371
<b>Total</b>	<b>12,988</b>	<b>12,882</b>	<b>13,222</b>	<b>13,621</b>	<b>14,211</b>



## Combined Student Enrollment by College and Schools: Fall 2005 to Fall 2009



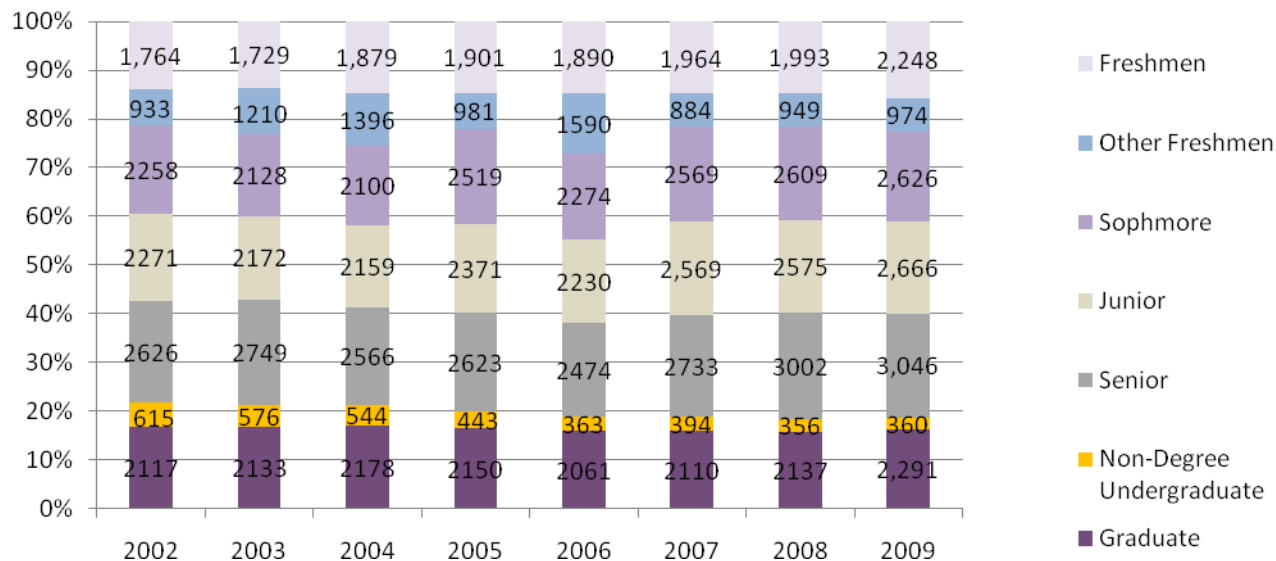
Note: Non-degree and Students with undeclared majors are depicted in EDS (Education Services).



## Head Count Enrollment by Student Level: Fall 2003 to Fall 2009

Student Level	2003	2004	2005	2006	2007	2008	2009
Freshmen	1,729	1,879	1,901	1,890	1,964	1,993	2,248
Other Freshmen	1,210	1,396	981	1,590	884	949	974
Sophomore	2,128	2,100	2,519	2,274	2,569	2,609	2,626
Junior	2,172	2,159	2,371	2,230	2,569	2,575	2,666
Senior	2,749	2,566	2,623	2,474	2,733	3,002	3,046
Non-Degree Undergraduate	576	544	443	363	394	356	360
Graduate	2,133	2,178	2,150	2,061	2,110	2,137	2,291
<b>Total</b>	<b>12,697</b>	<b>12,822</b>	<b>12,988</b>	<b>12,882</b>	<b>13,223</b>	<b>13,621</b>	<b>14,211</b>

## Enrollment by Student Level: Fall 2002 to Fall 2009



## Credit Hours and Student FTE Enrollment FY 2003-04 to FY 2008-09

	04-05	05-06	06-07	07-08	08-09
Lower Division Full-Time Equivalent Students	6,635	6,838	6,670	6,869	7,057.5
Upper Division Full-Time Equivalent Students	3,713	3,859	3,894	4,045	4,284.7
Graduate Division Full-Time Equivalent Students	1,353	1,340	1,301	1,384	1,427.1
<b>Total Full-Time Equivalent Students</b>	<b>11,701</b>	<b>12,037</b>	<b>11,865</b>	<b>12,298</b>	<b>12,769.2</b>

	04-05	05-06	06-07	07-08	08-09
College of Arts & Sciences	168,751	176,081	172,757	176,243	178,910
College of Business and Public Affairs	56,600	54,913	53,810	58,345	59,975
College of Education	46,141	49,243	47,555	47,884	47,109
College of Health Sciences	41,561	42,827	44,369	48,010	50,811
College of Visual and Performing Arts	28,295	28,066	27,706	28,349.5	29,066
Undeclared/Non-Degree	1,574	1,939	1,950	1,906	1,723
<b>Total University</b>	<b>342,922</b>	<b>353,069</b>	<b>348,145</b>	<b>360,737.5</b>	<b>367,594</b>

	Lower	Upper	Total Undergrad	Graduate	Total
College of Arts & Sciences	133,298	37,030	170,328	8,582	178,910
College of Business and Public Affairs	23,640	30,262	53,902	6,073	59,975
College of Education	8,733	26,745	35,478	11,631	47,109
College of Health Sciences	202,80.5	23,937	442,17.5	6,593.5	50,811
College of Visual and Performing Arts	20,211	7,141	27,352	1,714	29,066
Undeclared/Non-Degree	407	1,316	1,723		1,723
<b>Total University</b>	<b>206,569.5</b>	<b>126,431</b>	<b>333,000.5</b>	<b>34,593.5</b>	<b>367,594</b>



# RETENTION AND GRADUATION





## Retention and Graduation Rates for First-time, Full-Time, First-Year, Degree-Seeking, Student Cohorts --University Summary

Fall Cohort	N 1st Fall	2nd Fall		3rd Fall		4th Fall		5th Fall				6th Fall				7th Fall			
		Cohort Retained		Cohort Retained		Cohort Retained		Cumulative Graduated within 4 yrs*		Cohort Retained		Cumulative Graduated within 5 yrs		Cohort Retained		Cumulative Graduated within 6 yrs		Cohort Retained	
		n	% IF	n	% IF	n	% IF	n	% IF	n	% IF	n	% IF	n	% IF	n	% IF	n	% IF
1993	1380	1140	82.6	958	69.4	877	63.6	367	26.6	461	33.4	711	51.5	101	7.3	771	55.9	42	3.0
1994	1364	1084	79.5	906	66.4	823	60.3	319	23.4	473	34.7	666	48.8	109	8.0	741	54.3	30	2.2
1995	1384	1129	81.6	985	71.2	902	65.2	363	26.2	512	37.0	761	55.0	89	6.4	816	59.0	33	2.4
1996	1454	1170	80.5	1003	69.0	945	65.0	376	25.9	527	36.2	771	53.0	103	7.1	833	57.3	35	2.4
1997	1576	1298	82.4	1116	70.8	1055	66.9	409	26.0	605	38.4	861	54.6	109	6.9	932	59.1	30	1.9
1998	1627	1353	83.2	1173	72.1	1070	65.8	474	29.1	577	35.5	898	55.2	108	6.6	964	59.3	34	2.1
1999	1710	1413	82.6	1219	71.3	1150	67.3	444	26.0	653	38.2	943	55.1	91	5.3	1023	59.8	24	1.4
2000	1710	1412	82.3	1275	74.3	1166	68.0	536	31.3	569	33.2	961	56.0	103	6.0	1037	60.5	35	2.0
2001	1625	1384	85.2	1222	75.2	1149	70.7	571	35.1	520	32.0	996	61.3	79	4.9	1050	64.6	29	1.8
2002	1766	1461	82.7	1290	73.0	1236	70.0	642	36.4	536	30.4	1049	59.4	97	5.5	1123	63.6	25	1.4
2003	1723	1466	85.1	1298	75.3	1207	70.1	685	39.8	481	27.9	1053	61.1	89	5.2	1121	65.1	21	1.2
2004	1870	1570	84.0	1361	72.8	1306	69.8	734	39.3	535	28.6	1153	61.7	95	5.1				
2005	1894	1607	84.8	1442	76.1	1378	72.8	813	42.9	528	27.9								
2006	1883	1616	85.8	1467	77.9	1401	74.4												
2007	1955	1650	84.4	1511	77.3														
2008	1992	1683	84.5																
2009	2241																		

Note: Data is from PASSHE enrollment at census dates and PASSHE completions files. Includes degree sweeps and IPEDS exclusions through 3/2010



## Second-Year Retention Rates for First-Time, Full-Time, Degree-Seeking Freshmen by Race/Ethnicity

Fall Cohort	African American			Asian			Latino			Native American			Caucasian		
	N 1 <sup>st</sup> Fall	N 2 <sup>nd</sup> Fall	% Retained	N 1 <sup>st</sup> Fall	N 2 <sup>nd</sup> Fall	% Retained	N 1 <sup>st</sup> Fall	N 2 <sup>nd</sup> Fall	% Retained	N 1 <sup>st</sup> Fall	N 2 <sup>nd</sup> Fall	% Retained	N 1 <sup>st</sup> Fall	N 2 <sup>nd</sup> Fall	% Retained
2004	164	130	79.3	35	28	80.0	58	48	82.8	4	3	75.0	1607	1359	84.6
2005	169	147	87.0	38	30	78.9	66	56	84.8	3	3	100.0	1615	1369	84.8
2006	174	152	87.4	42	36	85.7	65	45	69.2	5	4	80.0	1597	1379	86.3
2007	190	151	79.5	39	35	89.7	62	44	71.0	9	9	100.0	1654	1411	85.3
2008	201	168	83.6	44	37	84.1	90	77	85.6	5	4	80.0	1647	1396	84.8

## Second-Year Retention Rates for First-Time, Full-Time, Degree-Seeking Freshmen by Gender

Fall Cohort	Male			Female		
	N 1 <sup>st</sup> Fall	N 2 <sup>nd</sup> Fall	% Retained	N 1 <sup>st</sup> Fall	N 2 <sup>nd</sup> Fall	% Retained
2004	656	543	82.8	1214	1027	84.6
2005	677	556	82.1	1217	1051	86.4
2006	683	558	81.7	1200	1058	88.2
2007	740	612	82.7	1215	1038	85.4
2008	761	635	82.4	1231	1048	85.1



## Four-Yr Graduation Rates for First-Time, Full-Time Freshmen by Ethnicity

Fall Cohort	African American			Asian			Latino			Native American			Caucasian		
	N 1st Fall	N Grad	% Grad	N 1st Fall	N Grad	% Grad	N 1st Fall	N Grad	% Grad	N 1st Fall	N Grad	% Grad	N 1st Fall	N Grad	% Grad
2001	137	31	22.6	37	8	21.6	48	8	16.7	7	1	14.3	1391	522	37.5
2002	142	41	28.9	37	10	27.0	42	8	19.0	8	2	25.0	1537	580	37.8
2003	181	47	26.0	25	8	32.0	58	19	32.8	1	0	0	1442	606	42.0
2004	164	39	23.8	35	13	37.1	58	14	24.1	4	1	25.0	1607	667	41.5
2005	169	51	30.2	38	13	34.2	66	26	39.4	3	1	33.3	1615	722	44.7

## Six-Yr Graduation Rates for First-Time, Full-Time Freshmen by Ethnicity

Fall Cohort	African American			Asian			Latino			Native American			Caucasian		
	N 1st Fall	N Grad	% Grad	N 1st Fall	N Grad	% Grad	N 1st Fall	N Grad	% Grad	N 1st Fall	N Grad	% Grad	N 1st Fall	N Grad	% Grad
1999															
2000															
2001	137	71	51.8	37	17	45.9	48	30	62.5	7	5	71.4	1391	924	66.4
2002	142	76	53.5	37	22	59.5	37	22	59.5	8	4	50.0	1535	999	65.1
2003	181	98	54.1	25	14	56.0	25	14	56.0	1	0	0.0	1442	969	67.2

## Four-Yr & Six-Yr Graduation Rates for First-Time, Full-Time Freshmen by Gender

Fall Cohort	Male					Female				
	N 1st Fall	4 Yr Grad		6Yr Grad		N 1st Fall	4 Yr Grad		6 Yr Grad	
		#	%	#	%		#	%	#	%
1999										
2000	630	127	20.2	322	52.7	1085	409	37.7	705	65.0
2001	606	144	23.8	344	56.8	1019	427	41.9	706	69.3
2002	662	168	25.4	362	54.7	1104	474	42.9	761	68.9
2003	604	152	25.2	355	58.8	1119	533	47.6	766	68.5
2004	656	177	27.0			1214	557	45.9		
2005	377	216	31.9			1217	597	49.1		



## ACADEMIC AND DEGREE PROGRAMS



## Undergraduate Degrees and Majors - Fall 2009

Award	Description	Award	Description	Award	Description
BS	Accounting	BA, TC	French	BS, BSED, TC	Physics
Certificate	Adapted Physical Education	TC	General Science	BS	Physics-Engineering
BA	American Studies	BA	Geography	BA	Political Science-Applied Public Policy
BA	Anthropology	BA	Geography-Geographic Analysis		
BA	Anthropology-Sociology	BA	Geography-Urban/Regional Planning	BA	Political Science - International Relations
BS, Certificate	Athletic Training			BA	Political Science
BS	Biochemistry	BS	Geoscience: Earth Systems	BS	Pre-Business Economics-Finance
BA, BS, BSED, TC	Biology	BS	Geoscience: Environmental	BS	Pre-Business-Management
BS	Biology: Cell & Molecular	BS	Geoscience: Geology	BS	Pre-Business-Marketing
BS	Biology: Ecology	BA, TC	German	Certificate	Pre-Graduate Program
BS	Biology: Medical Technology	BS, TC	Health & Physical Education	BS	Nutrition and Dietetics
BS	Biology: Microbiology	BS	Health Science: General	BA	Psychology
BS	Business Management	BS	Health Science: Respiratory Care	BS	Public Health: Environmental
BS, BSED, TC	Chemistry	BA, TC	History	BS	Public Health: Health Promotion
BS	Chemistry-Biology	BA, TC	Latin	BSN	RN to BSN
BSED	Communication: Media Emphasis	Certificate	Leadership & Civic Engagement	BA, TC	Russian
BSED	Communication: Speech Emphasis	BA	Liberal Studies: Arts & Sciences	BSED	Social Studies: History
		BA	Liberal Studies: Career Preparation	BSW	Social Work
BSED	Communication: Theatre Emphasis	BS	Liberal Studies: Professional Studies	BA	Sociology
		BS	Liberal Studies: Science and Mathematics	BA, TC	Spanish
BA	Communication Studies			BSED, TC	Special Education
TC	Communications	BA	Literature	TC	Speech Correction
BA	Communicative Disorders	BS	Marketing	BA, BFA	Studio Arts
BS	Computer Science	BA, BS, BSED, TC	Mathematics	Certificate	TESL
BS	Criminal Justice	BM	Music - Performance	BA	Theatre Arts: General
BSED, TC	Early Childhood Education	BM	Music Education: Instrument	BA	Theatre Arts: Music Theatre
BSED	Earth-Space Science - Geology	BM	Music Education: Keyboard	BA	Theatre Arts: Performance
BSED, TC	Earth-Space Science	BM	Music Education: Voice	BA	Theatre Arts: Technical Production
BS	Economics	TC	Music Education	BA	Women's Studies
TC	Elective Social Studies	BM	Music: Elective Studies	BS, BSED, TC	Physics
BSED, TC	Elementary Education	BM	Music: Theory & Composition		
BA, BSED, TC	English	BSN	Nursing		
BS	Exercise Science Specialist	BS	Nutrition and Dietetics		
Certificate	Foreign Language Instructional I	BS	Pharmaceutical Product Development		
BS	Finance				
BS	Forensic & Toxicological Chemistry	BA	Philosophy		
		BA	Philosophy-Religious Studies		



## Graduate Degrees and Majors Fall 2009

Award	Description	Award	Description	Award	Description
Certificate	Administration	MA, TC	English	Certificate	Music Technology
MS, Certificate	Applied Statistics	MA	English - Non-Thesis Option	MM	Music: Accompanying
Certificate	Autism	MS	Health and Physical Education: Exercise and Sport Physiology	MM	Music: Piano Pedagogy
MS, TC	Biology			MM	Music: Theory & Composition
MS	Biology - Natural Science	MA, MED, TC	French	MSA, Certificate	Non Profit Administration
MS	Biology - Thesis	TC	General Science	MSN	Nursing
Certificate	Business	Certificate	Geographic Technology	MSN, Certificate	Nursing Education
MBA	Business Administration: Economics-Finance	MA	Geography	Certificate	Orff-Schulwerk
MBA	Business Administration: Executive	MED, TC	German	Certificate	Parish Nursing
MBA	Business Administration: General	Certificate	Gerontology	MA	Philosophy
MBA	Business Administration: Management	TC	Health and Physical Education	MS	Physical Education
MBA	Business Administration: Technology and Electronic Commerce	Certificate	Health Care Administration	MA	Physical Science: Earth Science
Certificate	Business Ethics	MS	Health: Gerontology	Certificate	Piano Pedagogy
MS, TC	Chemistry	Certificate	Health: Integrative Health	Certificate	Professional Counselor Licensure Preparation
MS	Clinical Chemistry	MS	Health: Public Health	MA	Psychology: Clinical
Certificate	Clinical Mental Health	MED	Health: School Health	MA	Psychology: General
MA	Communication Studies	Certificate	Healthcare Ethics	MA	Psychology: Industrial
MA	Communicative Disorders	MA, MED, TC	History	MSA	Public Administration
MS, Certificate	Computer Science	MA, Certificate	Holocaust & Genocide Studies	MPH	Public Health
Certificate	Computer Security	MSA, Certificate	Human Resource Management	MED	Reading
MED	Counseling: Elementary School	MSA	Individualized Program	Certificate	Reading Specialist
MS	Counseling: Higher Education/Student Affairs	Certificate	Information Systems	MSA	Regional Planning
MED	Counseling: Secondary School	Certificate	Kodaly Methodology	Certificate	School Nursing
Certificate	Counseling (Elementary or Secondary) Specialist I	TC	Latin	MED, Certification	Secondary Education
MS	Criminal Justice	MSA, Certificate	Leadership for Women	MSW	Social Work
MS		Certificate	Literacy	MA, MED, TC	Spanish
		MSA	Long-Term Health Care	TC	Speech Correction
		MA, TC	Mathematics	MED, TC	Special Education
		MM, TC	Music Education	MSA	Sport & Athletic Administration
		Certificate	Music Education: 21st Century	Certificate	Teaching and Learning with Technology
				MA, Certificate	TESL
		MM	Music Education: Technology	MSA	Training & Development
		MA	Music History	Certificate	Web Technology
		Certificate	Music Education: 21st Century	MA	Psychology: Clinical
		MM	Music Education: Technology		
		MA	Music History		
		MM	Music Performance		



## Professional and Program Accreditations

Institutional Accreditation  
West Chester University is accredited by  
The Middle States Association of Colleges and Secondary Schools on Higher Education  
Toward Associate's, Bachelor's, Master's, and Specialist degrees.

### College of Arts and Sciences

Biology BSED and Biology Teaching Certificate --PDE, NCATE, NSTA

Biochemistry BS—ACS

Chemistry BS--ACS

Chemistry BSED and Chemistry Teaching Certificate --PDE, NCATE, NSTA

Communication BSED--PDE, NCATE

Communications Teaching Certificate--PDE, NCATE

Computer Science BS--Beginning the process of ABET accreditation

Earth-Space Science BSED, Earth-Space Science-Geology BSED, and Earth-Space Science Teaching Certificate--PDE, NCATE, NSTA

Elective Social Studies, Geography, History, and Political Science Teaching Certificate--PDE, NCATE, NCSS

English BSED and English Teaching Certificate--PDE, NCATE, NCTE

Forensic & Toxicological Chemistry BS--FEPAC

French MED--NCATE, ACTFL

French Teaching Certificate--PDE, NCATE, ACTFL

General Science Teaching Certificate--PDE, NCATE, NSTA

German MED--NCATE, ACTFL

German Teaching Certificate--PDE, NCATE, ACTFL

History MED--PASSHE, NCATE, NCSS

History Teaching Certificate--PDE, NCATE, NCSS



## **Professional and Program Accreditations (Continued)**

### **College of Arts and Sciences (Continued)**

Latin BSED and Latin Teaching Certificate--PDE, NCATE, ACTFL

Mathematics BSED and Mathematics Teaching Certificate--PDE, NCATE, NCTM

Physics BSED and Physics Teaching Certificate--PDE, NCATE, NSTA

Russian Teaching Certificate--PDE, NCATE, ACTFL

Spanish MED--NCATE

Spanish Teaching Certificate--PDE, NCATE, ACTFL

Teaching English as a Second Language MA and Teaching English as a Second Language Certificate--PDE, NCATE

### **College of Business and Public Affairs**

Accounting BS--AACSB

Business Administration: Executive MBA--AACSB

Business Administration: General MBA--AACSB

Business Management BS--AACSB

Economics BS--AACSB

Finance BS--AACSB

Marketing BS--AACSB

Social Work BSW and Social Work MSW--CSWE

### **College of Education**

Counseling: Elementary School Counseling MED--PDE, NCATE, Beginning the process of CACREP accreditation

Counseling: Higher Education/Student Affairs MS--Beginning the process of CACREP accreditation

Counseling: Secondary School Counseling MED--PDE, NCATE, Beginning the process of CACREP accreditation





## **Professional and Program Accreditations (Continued)**

### **College of Education (Continued)**

Counseling (Elementary or Secondary) Specialist I Certificate--PDE, NCATE Beginning the process of CACREP accreditation

Early Childhood Education BSED and Early Childhood Education Teaching Certificate--PDE, NCATE, NAEYC

Early Childhood Education MED--PASSHE, NCATE, NAEYC

Elementary Education BSED and Elementary Education Teaching Certificate--PDE, NCATE, ACEI

Elementary Education MED--PASSHE, NCATE, ACEI

Reading MED and Reading Specialist Certificate--PDE, NCATE, IRA

Secondary Education MED--NCATE

Secondary Education Teaching Certificate--PDE, NCATE

Special Education BSED and Special Education Teaching Certificate--PDE, NCATE, CEC

Special Education MED--PASSHE, NCATE, CEC

### **College of Health Sciences**

Athletic Training BS--CAATE

Communicative Disorders MA--ASHA (on probation)

Exercise Science Specialist BS--CAAHEP (currently under review)

Health: School Health MED--AAHE

Health & Physical Education BS and Health & Physical Education Teaching Certificate--PDE, NCATE, NASPE

Health & Physical Education: Exercise Physiology MS-- CAAHEP (currently under review)

Health Science: Respiratory Care BS--CAAHEP

Nursing BSN and Nursing MSN--CCNE

Nutrition and Dietetics BS--CADE

Public Health MPH--CEPH



## **Professional and Program Accreditations (Continued)**

### **College of Health Sciences (Continued)**

RN to BSN--CCNE

School Nursing Certificate--PDE, NCATE, CCNE

Speech Correction Teaching Certificate--PDE, NCATE

### **College of Visual and Performing Arts**

Music Education: Instrumental BM--PDE, NCATE, NASM

Music Education: Keyboard BM--PDE, NCATE, NASM

Music Education: Voice BM--PDE, NCATE, NASM

Music Education MM--NCATE, NASM

Music Education Teaching Certificate--PDE, NCATE, NASM

Music: Elective Studies BM--NASM

Music History MA--NASM

Music-Performance BM--NASM

Music Performance MM--NASM

Music: Piano Pedagogy MM--NASM

Music: Theory & Composition BM and Music: Theory & Composition MM--NASM

Studio Arts BA and Studio Arts BFA--Beginning the process of NASAD accreditation

Theatre Arts: General BA--Beginning the process of NAST accreditation

Theatre Arts: Music Theatre BA--Beginning the process of NAST accreditation

Theatre Arts: Performance BA--Beginning the process of NAST accreditation

Theatre Arts: Technical Production BA--Beginning the process of NAST accreditation



DEGREES CONFERRED



## Undergraduate and Graduate Degrees Conferred Fall Year 1999- 2000 to Spring Year 2008-2009

Academic Plan		Degree Year					
		2003-04	2004-05	2005-06	2006-07	2007-08	2008-09
<b>College of Arts and Sciences</b>							
<b>Anthropology and Sociology</b>							
Undergraduate							
	Anthropology BA	7	7	5	3	11	15
	Anthropology-Sociology BA	1	0	0	0	0	0
	Sociology BA	29	20	18	24	19	30
	Total Undergraduate	37	27	23	27	30	45
Graduate							
	Long-Term Health Care MSA	3	1	3	1	0	0
	Total Graduate	3	1	3	1	0	0
	Department Totals	40	28	26	28	30	45
<b>Art</b>							
Undergraduate							
	Studio Arts BA	7	See College of Visual and Performing Arts				
	Studio Arts BFA	47					
	Total Undergraduate	54					
	Department Totals	54					
<b>Biology</b>							
Undergraduate							
	Biology BA	0	3	3	0	3	2
	Biology BSED	6	2	6	4	8	8
	Biology BS	17	12	14	17	19	34
	Biology: Microbiology BS	8	3	3	3	5	7
	Biology: Ecology BS	6	5	5	3	1	2
	Biology: Medical Technology BS	2	2	1	1	1	1
	Biology: Cell & Molecular BS	9	10	5	8	10	7
	Total Undergraduate	48	37	37	36	47	61
Graduate							
	Biology MS	2	0	4	7	6	5
	Biology - Thesis MS	4	1	2	2	3	6
	Total Graduate	6	1	6	9	9	11
	Department Totals	54	38	43	45	56	72

Academic Plan	Degree Year					
	2003-04	2004-05	2005-06	2006-07	2007-08	2008-09
<b>Chemistry</b>						
Undergraduate						
Chemistry BSED	1	4	1	1	0	4
Chemistry-Biology * BS	3	3	5	16	7	14
Chemistry BS	3	0	4	4	7	7
Biochemistry BS	2	0	0	3	3	3
Foreign & Toxicology Chemistry BS	9	11	15	15	7	7
Total Undergraduate	18	18	25	39	24	35
Graduate						
Physical Science: Chemistry MA	1	0	0	0	0	0
Chemistry MED	0	1	0	0	0	0
Chemistry MS	2	0	1	0	0	0
Clinical Chemistry MS	1	4	0	1	1	0
Total Graduate	4	5	1	1	1	0
Department Totals	22	23	26	40	25	35
<b>Communications Studies</b>						
Undergraduate						
Communication Studies BA	88	123	130	114	106	116
Communication-Comm/Tha BSED	2	0	1	0	0	0
Communication-Theatre/Med BSED	1	0	0	0	0	0
Communication-Theatre/Med BSED	0	0	0	0	0	2
Total Undergraduate	91	123	131	114	106	118
Graduate						
Communication Studies MA	7	10	4	9	6	13
Total Graduate	7	10	4	9	6	13
Department Totals	98	133	135	123	112	131

Academic Plan	Degree Year					
	2003-04	2004-05	2005-06	2006-07	2007-08	2008-09
<b>Computer Science</b>						
Undergraduate						
Computer Science BS	30	33	28	19	21	32
Total Undergraduate	30	33	28	19	21	32
Graduate						
Computer Science MS	13	12	15	12	9	10
Total Graduate	13	12	15	12	9	10
Department Totals	43	45	43	31	30	42
<b>English</b>						
Undergraduate						
Comparative Literature BA	3	0	5	2	0	0
Literature BA	35	38	36	45	12	7
English BA	0	0	0	0	36	59
English BSED	13	21	28	25	28	34
Total Undergraduate	51	59	69	72	76	100
Graduate						
English MA	10	17	19	24	32	24
Writing, Teaching & Criticism MA	0	0	0	1	0	0
TESL MA	17	11	16	26	13	14
English - Non-Thesis Option MA	2	0	1	0	0	0
Total Graduate	29	28	36	51	45	38
Department Totals	80	87	105	123	121	138

Academic Plan	Degree Year					
	2003-04	2004-05	2005-06	2006-07	2007-08	2008-09
<b>Geology &amp; Astronomy</b>						
Undergraduate						
Earth-Space Science - Environmental BSED	1	0	0	0	0	0
Earth-Space Science BSED	3	1	3	7	5	5
Earth-Space Science - Geology BSED	5	6	2	0	0	0
Geoscience - Earth Systems BS	3	3	2	7	3	9
Geoscience: Geology BS	5	3	4	6	7	4
Geoscience: Environ Geoscience BS	1	0	0	0	0	1
Total Undergraduate	18	13	11	20	15	19
Graduate						
Physical Science: Earth Science MA	4	6	2	3	6	4
Total Graduate	4	6	2	3	6	4
Department Totals	22	19	13	23	21	23
<b>Foreign Language</b>						
Undergraduate						
French BA	3	1	3	4	4	8
German BA	0	0	0	1	5	5
Latin BA	0	0	0	1	1	3
Russian BA	2	2	0	1	3	3
Spanish BA	5	11	12	12	16	13
French BSED	2	2	0	0	0	0
German BSED	0	1	0	0	0	0
Spanish BSED	5	5	3	1	0	1
Total Undergraduate	17	22	18	20	29	33

Academic Plan		Degree Year					
		2003-04	2004-05	2005-06	2006-07	2007-08	2008-09
<b>Foreign Language (continued)</b>							
Graduate							
	French MA	0	0	1	2	3	3
	Spanish MA	0	1	1	3	0	2
	French MED	0	2	1	0	0	1
	Spanish MED	0	1	3	2	0	2
	Total Graduate	0	4	6	7	3	8
	Department Totals	17	26	24	27	32	41
<b>History</b>							
Undergraduate							
	American Studies BA	2	4	4	0	2	0
	History BA	23	56	65	62	68	81
	Social Studies: History BSED	25	9	8	2	0	0
	Total Undergraduate	50	69	77	64	70	81
Graduate							
	History MA	8	7	10	10	6	6
	Holocaust & Genocide Studies MA	2	4	2	2	6	6
	History MED	0	0	1	5	0	1
	Total Graduate	10	11	13	17	12	13
	Department Totals	60	80	90	81	82	94
<b>Liberal Studies</b>							
Undergraduate							
	Liberal Studies: Arts & Science BA	4	16	18	19	24	23
	Liberal Studies: Career Pre BA	29	16	6	1	2	0
	Pharmaceutical Product Dev BS	7	9	8	11	6	11
	Liberal Studies: Science /Math BS	9	7	8	5	6	9
	Liberal Studies: Profession BS	107	138	187	179	187	247
	Total Undergraduate	156	186	227	215	225	290
	Department Totals	156	186	227	215	225	290



Academic Plan	Degree Year					
	2003-04	2004-05	2005-06	2006-07	2007-08	2008-09
<b>Mathematics</b>						
Undergraduate						
Mathematics BA	4	6	4	6	5	3
Mathematics-Computer Science BA	1	0	0	0	0	0
Mathematics BS	0	0	0	0	9	9
Mathematics BSED	12	13	19	24	16	19
Total Undergraduate	17	19	23	30	30	31
Graduate						
Mathematics MA	2	7	3	5	2	9
Applied Statistics MS	0	3	11	9	21	25
Total Graduate	2	10	14	14	23	34
Department Totals	19	29	37	44	53	65
<b>Philosophy</b>						
Undergraduate						
Philosophy BA	6	9	7	6	7	11
Philosophy-Religious Studies BA	1	2	1	1	1	2
Total Undergraduate	7	11	8	7	8	13
Graduate						
Philosophy MA	6	5	5	5	3	1
Total Graduate	6	5	5	5	3	1
Department Totals	13	16	13	12	11	14
<b>Physics</b>						
Undergraduate						
Physics BSED	1	0	2	1	2	1
Physics BS	4	0	3	4	1	5
Physics-Engineering BS	0	1	2	0	0	0
Total Undergraduate	5	1	7	5	3	6
Department Totals	5	1	7	5	3	6

Academic Plan	Degree Year					
	2003-04	2004-05	2005-06	2006-07	2007-08	2008-09
<b>Psychology</b>						
Undergraduate						
Psychology BA	96	102	106	111	125	130
Social Studies: Psychology BSED	1	0	0	0	0	0
Total Undergraduate	97	102	106	111	125	130
Graduate						
Psychology: Clinical MA	13	23	18	14	16	21
Psychology: General MA	1	0	2	3	2	2
Psychology: Industrial MA	12	9	5	4	14	7
Total Graduate	26	32	25	21	32	30
Department Totals	123	134	131	132	157	160
<b>Theatre Arts</b>						
Undergraduate						
Theatre Arts: Performance BA	5					
Theatre Arts: Music Theatre BA	2	See College of Visual and Performing Arts				
Theatre Arts: General BA	2					
Total Undergraduate	9					
Department Totals	9					
<b>Women's Studies</b>						
Undergraduate						
Women's Studies BA	6	3	5	3	3	4
Total Undergraduate	6	3	5	3	3	4
Graduate						
Leadership for Women MSA	0	1	1	0	1	0
Total Graduate	0	1	1	0	1	0
Department Totals	6	4	6	3	4	4
College of Arts and Sciences Undergraduate Totals	711	723	795	782	812	998
College of Arts and Sciences Graduate Totals	110	126	131	150	150	162
College of Arts and Sciences Totals	821	849	926	932	962	1160

Academic Plan	Degree Year					
	2003-04	2004-05	2005-06	2006-07	2007-08	2008-09
<b>College of Business and Public Affairs</b>						
<b>Accounting</b>						
Undergraduate						
Accounting BS	66	48	57	56	63	91
Total Undergraduate	66	48	57	56	63	91
Department Totals	66	48	57	56	63	91
<b>Criminal Justice</b>						
Undergraduate						
Criminal Justice BS	107	97	118	84	70	86
Total Undergraduate	107	97	118	84	70	86
Graduate						
Criminal Justice - Thesis MS	1	1	0	0	0	0
Criminal Justice MS	9	12	12	11	12	18
Total Graduate	10	13	12	11	12	18
Department Totals	117	110	130	95	82	104
<b>Economics and Finance</b>						
Undergraduate						
Economics BS	4	6	7	4	8	4
Finance BS	49	46	47	40	52	69
Total Undergraduate	53	52	54	44	60	73
Graduate						
Bus Admin: Economics-Finance						
MBA	2	11	14	5	6	7
Total Graduate	2	11	14	5	6	7
Department Totals	55	63	68	49	66	80

Academic Plan	Degree Year					
	2003-04	2004-05	2005-06	2006-07	2007-08	2008-09
<b>Geography</b>						
Undergraduate						
Geography BA	6	5	11	5	9	13
Geography-Urban/Regional PI BA	3	3	1	2	5	1
Geography-Geographic Analyses BA	4	4	3	1	5	1
Total Undergraduate	13	12	15	8	19	15
Graduate						
Geography MA	14	4	9	6	7	13
Regional Planning MSA	1	3	1	0	0	3
Total Graduate	15	7	10	6	7	16
Department Totals	28	19	25	14	26	31
<b>Political Science</b>						
Undergraduate						
Political Science-Applied Pub Policy BA	4	6	1	0	3	1
Political Science - Int'l Relations BA	17	11	18	10	14	19
Political Science BA	32	46	48	44	46	50
Social Studies: Geography BSED	0	1	0	0	0	0
Social Studies: Political Science BSED	1	0	0	0	0	0
Total Undergraduate	54	64	67	54	63	70
Graduate						
Human Resource Mgmt. MSA	8	5	4	6	0	0
Individualized Program MSA	4	3	3	2	3	4
Human Resource Mgmt. MSA	0	0	0	0	9	3
Public Administration MSA	1	2	1	5	5	0
Training & Developmental MSA	2	0	3	1	0	1
Nonprofit Administration MSA	0	0	0	0	0	1
Total Graduate	15	10	11	14	17	9
Department Totals	69	74	78	68	80	79

Academic Plan		Degree Year					
		2003-04	2004-05	2005-06	2006-07	2007-08	2008-09
<b>Management</b>							
Undergraduate							
	Business Management BS	126	131	125	132	109	136
	Total Undergraduate	126	131	125	132	109	136
Graduate							
	Bus Admin: General MBA	2	4	12	8	15	16
	Bus Admin: Management MBA	6	10	10	15	5	1
	Bus Admin: Executive MBA	13	18	0	0	0	0
	Total Graduate	21	32	22	23	20	17
	Department Totals	147	163	147	155	129	153
<b>Marketing</b>							
Undergraduate							
	Marketing BS	105	99	92	89	74	112
	Total Undergraduate	105	99	92	89	74	112
Graduate							
	Bus Admin: Tech-Electronic MBA	30	12	5	4	4	1
	Total Graduate	30	12	5	4	4	1
	Department Totals	135	111	97	93	78	113
<b>Social Work</b>							
Undergraduate							
	Social Work BSW	31	49	38	42	43	39
	Total Undergraduate	31	49	38	42	43	39
Graduate							
	Social Work MSW	17	28	37	32	40	30
	Total Graduate	17	28	37	32	40	30
	Department Totals	48	77	75	74	83	69
<i>College of Business and Public Affairs Undergraduate Totals</i>		555	552	566	509	501	622
<i>College of Business and Public Affairs Graduate Totals</i>		110	113	111	95	106	98
<i>College of Business and Public Affairs Totals</i>		665	665	677	604	607	720

Academic Plan	Degree Year					
	2003-04	2004-05	2005-06	2006-07	2007-08	2008-09
<b>College of Education</b>						
<b>Counseling and Educational Psychology</b>						
Graduate						
Counseling: Elementary MED	20	17	14	16	18	26
Counseling: Secondary MED	17	19	26	29	32	32
Counseling: Higher Ed/Stu Affairs MS	27	29	31	23	27	16
Total Graduate	64	65	71	68	77	74
Department Totals	64	65	71	68	77	74
<b>Early Childhood and Special Education</b>						
Undergraduate						
Early Childhood Education BSED	51	50	48	38	37	44
Special Education BSED	53	60	50	52	62	73
Total Undergraduate	104	110	98	90	99	117
Graduate						
Special Education MED	6	17	22	20	30	21
Early Childhood Education MED	0	0	0	2	2	17
Total Graduate	6	17	22	22	32	38
Department Totals	110	127	120	112	131	155
<b>Elementary Education</b>						
Undergraduate						
Elementary Education BSED	256	241	235	267	214	234
Total Undergraduate	256	241	235	267	214	234
Graduate						
Elementary Education MED	40	46	26	33	40	36
Total Graduate	40	46	26	33	40	36
Department Totals	296	287	261	300	254	270
<b>Literacy</b>						
Graduate						
Reading MED	61	50	40	56	40	42
Total Graduate	61	50	40	56	40	42
Department Totals	61	50	40	56	40	42

Academic Plan		Degree Year					
		2003-04	2004-05	2003-04	2003-04	2003-04	2003-04
<b>Professional and Secondary Education</b>							
Graduate							
	Secondary Education MED	11	11	14	14	16	29
	Educational Research MS	2	0	0	4	1	0
	Total Graduate	13	11	14	18	17	29
	Department Totals	13	11	14	18	17	29
College of Education Undergraduate Totals		360	351	333	357	313	351
College of Education Graduate Totals		184	189	173	197	206	219
College of Education Totals		544	540	506	554	519	570
<b>College of Health Sciences</b>							
<b>Health</b>							
Undergraduate							
	Public Health: Health Promotion BS	30	12	15	13	26	13
	Public Health: Environmental BS	1	1	3	2	4	7
	Nutrition and Dietetics BS	0	24	35	51	51	58
	Health Science: General BS	8	7	11	10	11	7
	Health Science: Respiratory Care BS	7	5	21	27	21	25
	Total Undergraduate	46	49	85	103	113	110
Graduate							
	Health: School Health MED	2	7	15	10	3	13
	Public Health MPH	21	16	21	44	26	29
	Health: Environment Health MS	1	0	0	0	0	0
	Health Services MSA	2	1	0	0	0	0
	Health: Public Health MS	0	0	0	1	0	0
	Total Graduate	26	24	36	55	29	42
	Department Totals	72	73	121	158	142	152

Academic Plan		Degree Year					
		2003-04	2003-04	2003-04	2003-04	2003-04	2003-04
<b><i>Kinesiology</i></b>							
Undergraduate							
	Health & Physical Education BS	51	68	73	86	82	96
	Exercise Science Specialist BS	32	21	31	40	21	43
	Total Undergraduate	83	89	104	126	103	139
Graduate							
	Health & Phys Ed: Exercise Phys MS	6	5	3	3	5	9
	Sport & Athletic Admin MSA	10	13	17	14	8	14
	MS in Physical Education	2	1	1	1	0	2
	Total Graduate	18	19	21	18	13	25
	Department Totals	101	108	125	144	116	164
<b><i>Nursing</i></b>							
Undergraduate							
	Nursing BSN	68	83	82	84	65	62
	RN to BSN	0	0	0	5	25	31
	Total Undergraduate	68	83	82	89	90	93
Graduate							
	Nursing - Education MSN	2	1	2	4	10	4
	Nursing MSN	10	6	10	8	9	8
	Total Graduate	12	7	12	12	19	12
	Department Totals	80	90	94	101	109	105
<b><i>Sports Medicine</i></b>							
Undergraduate							
	Athletic Training BS	9	14	29	18	17	26
	Total Undergraduate	9	14	29	18	17	26
	Department Totals	9	14	29	18	17	26



Academic Plan	Degree Year					
	2003-04	2003-04	2003-04	2003-04	2003-04	2003-04
<b>Communicative Disorders</b>						
Undergraduate						
Communicative Disorders BA	12	12	19	30	30	38
Total Undergraduate	12	12	19	30	30	38
Graduate						
Communicative Disorders MA	31	19	25	25	31	27
Total Graduate	31	19	25	25	31	27
Department Totals	43	31	44	55	61	65
College of Health Sciences Undergraduate Totals	218	247	319	366	353	406
College of Health Sciences Graduate Totals	87	69	94	110	92	106
College of Health Sciences Totals	305	316	413	476	445	512

### College of Visual and Performing Arts

#### Applied Music

Undergraduate						
Music - Performance BM	10	8	9	7	12	11
Total Undergraduate	10	8	9	7	12	11
Graduate						
Music: Piano Pedagogy MM	3	1	1	3	2	4
Music Performance MM	1	3	5	6	4	8
Total Graduate	4	4	6	9	6	12
Department Totals	14	12	15	16	18	23

#### Art

Undergraduate	See College of Arts & Sciences					
Studio Arts BA		3	3	6	1	1
Studio Arts BFA		48	63	62	46	70
Total Undergraduate		51	66	68	47	71
Department Totals		51	66	68	47	71

Academic Plan	Degree Year					
	2003-04	2003-04	2003-04	2003-04	2003-04	2003-04
<b>Music Education</b>						
Undergraduate						
Music Education: Instrument BM	17	34	24	20	38	38
Music Education: Voice BM	9	14	14	13	8	15
Music Education: Keyboard BM	5	4	3	8	3	6
Total Undergraduate	31	52	41	41	49	59
Graduate						
Music Education MM	25	4	6	15	10	18
Music Education-Technology	0	0	0	1	1	2
Total Graduate	25	4	6	16	11	20
Department Totals	56	56	47	57	60	79
<b>Theatre Arts</b>						
Undergraduate						
Theatre Arts: Performance BA	See College of Arts & Sciences	2	7	1	5	6
Theatre Arts: Music Theatre BA		4	2	2	7	7
Theatre Arts: Tech Production BA		6	4	3	2	3
Theatre Arts: General BA		2	5	6	1	4
Total Undergraduate		14	18	12	15	20
Department Totals		14	18	12	15	20
College of Visual and Performing Arts Undergraduate Totals		57	147	153	146	175
College of Visual and Performing Arts Graduate Totals		30	8	14	27	32
College of Visual and Performing Arts Totals		87	155	167	173	207
University Undergraduate Totals	1,901	2,020	2,166	2,160	2,114	2,552
University Graduate Totals	521	505	523	579	575	617
University Totals	2,422	2,525	2,689	2,739	2,689	3,169

## RESOURCES, SERVICES & FACILITIES



## Educational and General Budget Expenditure by Category FY 2006/07 - FY 2008/09 (based on PASSHE FINRPT)

	2006-07		2007-08		2008-09	
	FY Amount	%	FY Amount	%	FY Amount	%
Instruction	68,805,587	39.50	71,463,412	38.20	74,470,409	38.53
Organized Research	800,435	0.46	891,320	0.48	1,729,899	0.90
Public Service	1,949,255	1.12	2,438,265	1.30	2,674,477	1.38
Academic Support	18,263,434	10.48	19,766,253	10.56	22,590,271	11.69
Student Services	10,165,427	5.84	11,766,667	6.29	13,165,249	6.81
Institutional Support	21,895,653	12.57	25,389,145	13.57	21,534,248	11.14
Physical Plant	13,162,801	7.56	14,636,908	7.82	16,049,127	8.30
Grant & Scholarships	6,389,103	3.67	6,481,084	3.46	6,668,451	3.45
Auxiliary Enterprises	22,004,405	12.63	21,490,813	11.49	20,821,853	10.77
Depreciation	10,764,136	6.18	12,775,613	6.83	13,550,243	7.01
<b>Total</b>	<b>174,200,236</b>	<b>100.00</b>	<b>187,099,480</b>	<b>100.00</b>	<b>193,254,227</b>	<b>100.00</b>

## Revenues - Large Categories FY 2006/07 – FY 2008/09 (based on PASSHE FINRPT)

	FY 2005-06	FY 2006-07	FY 2007-08	FY 2008-09
Tuition & Fees	84,154,390	85,721,203	91,824,645	96,264,155
State Appropriations	51,974,028	53,717,738	55,116,455	54,126,757
Government Contracts & Grants				
Federal	190,318	315,539	195,011	217,170
State	0	0	4,864	0
Local	0	0	0	2,880
System	9,992	5,998	981,517	88,117
Other Sources	3,450,401	5,315,454	4,093,762	3,829,349
Private Gifts, Grants & Contracts	450	0	0	19,868
Endowment Income	0	0	0	0
Income From Other Investments	1,936,620	2,634,876	3,107,856	2,502,533
<b>Total e E&amp;G Revenue</b>	<b>141,716,199</b>	<b>147,710,808</b>	<b>155,324,110</b>	<b>157,050,829</b>

## Major Educational and General Revenue by Source FY 2004/05 to FY 2010/11

	<b>FY 2004/05<sup>1</sup></b>	<b>FY 2005/06<sup>2</sup></b>	<b>FY 2006/07<sup>3</sup></b>	<b>FY 2007/08<sup>4</sup></b>	<b>FY 2008/09<sup>5</sup></b>	<b>FY 2009/10<sup>5*</sup></b>	<b>FY 2010/11<sup>5*</sup></b>
Tuition & Fees	82,051,641	86,039,710	87,494,006	93,842,057	98,712,358	106,703,895	113,273,321
State Appropriations	47,476,970	50,706,242	52,538,957	53,773,619	52,929,089	50,631,659	53,973,848
Other	4,629,993	5,587,781	8,271,867	7,646,556	6,659,917	5,950,347	6,057,567
Carry Forward Fund Balance	0	0	0	0	0	0	2,791,813
<b>TOTAL</b>	<b>134,158,604</b>	<b>142,333,733</b>	<b>148,304,830</b>	<b>155,262,232</b>	<b>158,301,364</b>	<b>163,285,901</b>	<b>176,096,549</b>

\* Projected

---

<sup>1</sup> BUDREPORT-07 (fr PASSHE 051025)

<sup>2</sup> BUDREPORT-08 (rev 061024)

<sup>3</sup> BUDREPORT-09 (fr PASSHE 071011)

<sup>4</sup> BUDREPORT-10 (rev 081031)

<sup>5</sup> BUDREPORT-11 (rev 091013)

## Tuition and Fees by Semester

	2005	2006	2007	2008	2009
<b>Undergraduate Tuition</b>					
Full-Time In-State	\$2,453	\$2,519	\$2,588.50	\$2,679	\$2,777
Full-Time Out-of-State	\$6,133	\$6,299	\$6,472	\$6,698	\$6,943
Per Credit In-State	\$204	\$210	\$216	\$230	\$231
Per Credit Out-of-State	\$511	\$525	\$539	\$558	\$579
<b>Undergraduate Fees</b>					
Full-Time	\$588	\$565	\$583	\$599	\$725.70
Part-Time (per credit)	\$47	\$48	\$49	\$50	\$60.18
<b>Graduate Tuition</b>					
Full-Time In-State	\$2,944	\$3,024	\$3,107	\$3,215	\$3,333
Full-Time Out-of-State	\$4,711	\$4,839	\$4,972	\$5,144	\$5,333
Per Credit In-State	\$327	\$339	\$345	\$357	\$370
Per Credit Out-of-State	523	\$538	\$552	\$572	\$593
<b>Graduate Fees</b>					
Full-Time	\$477	\$484	\$500	\$500	\$664.35
Part-Time (per credit)	\$54	\$55	\$57	\$50	\$62.56
<b>Residence Halls</b>	\$2,070	\$2,110			
<b>Meal Plan*</b>	\$957	\$983	\$1,019	\$1,114	\$1,170

\*14 Meals per week

## Library FY 2005 - 09

	2005-06**	2006-07	2007-08	2008-09	2009-10	One Year Difference
<b>Library Holdings</b>						
Volumes	749,885	757,859	770,808	783,748	779,524	-0.5%
Microforms	880,125	879,753	1,068,632	933,192	934,181	0.1%
<b>Circulation (General &amp; Reserve)</b>	100,091	87,531	99,668	101,799	109,138	7.2%
<b><i>Total FTE Staff (includes student assistants)</i></b>	<b><i>63.53</i></b>	<b><i>59</i></b>	<b><i>59</i></b>	<b><i>54.79</i></b>	<b><i>57.46</i></b>	<b><i>4.9%</i></b>

\*\*FTE Staff for FY 2005-06 includes student assistants

## Fact book Evaluation

1. The Fact book was  
☐ Very helpful    ☐ Neither helpful/not helpful    ☐ Not Helpful
2. The sections in the Fact book that were *most helpful* (choose up to three):  
☐ Introduction  
☐ Admissions  
☐ Student enrollment  
☐ Retention
3. The sections in the Fact book that were *least helpful* (choose 3)  
☐ Introduction  
☐ Admissions  
☐ Student enrollment  
☐ Retention  
☐ Academic degree programs & accredited programs  
☐ Graduation / degree information  
☐ Faculty and staff information  
☐ Resources, services and facilities
4. For each section, why was the section **not** helpful (state section first)?  
Section: \_\_\_\_\_  
\_\_\_\_\_  
Section: \_\_\_\_\_  
\_\_\_\_\_  
Section: \_\_\_\_\_  
\_\_\_\_\_  
5. What other sections should be included in the Fact book?  
Section: \_\_\_\_\_  
Section: \_\_\_\_\_  
6. What other information should be included in the Fact book?  
Section: \_\_\_\_\_  
Section: \_\_\_\_\_  
7. The primary use of the Fact book in my department is (check all that apply):  
☐ Determination of annual activities    ☐ Enrollment planning  
☐ Evaluation of academic programs    ☐ Budget planning  
☐ Comparison with previous academic years    ☐ Other, please specify: \_\_\_\_\_  
☐ Comparison with other academic programs
8. Other comments for the Fact book:  
\_\_\_\_\_  
\_\_\_\_\_