

West
Chester
University

Fact Book 2010

West Chester University
of Pennsylvania





**West Chester University of Pennsylvania
Office of Institutional Research**

**809 Roslyn Avenue
West Chester, PA 19383
Telephone (610) 436-2835**

Fax (610) 436-2635

Introduction & Acknowledgements

This Fact Book provides some of the most commonly requested information about West Chester University. Much of the information is drawn from the University's database and state mandated reports. Other offices and sources used are cited throughout the document. The cooperation of those offices and sources is much appreciated.

The Fact Book is divided into several chapters: Admissions, Enrollment, Retention/graduation rates, Academic degree programs & accredited programs, Graduation/degree information, and Resources (including financial aid), services and facilities.

Comments and suggestions about additional information that might be included are much appreciated. As such, a fact book evaluation form is included. Completed evaluation forms can be returned to the Office of Institutional Research.

Additional institutional information is available on the World Wide Web: <http://www.wcupa.edu>.



Table of Contents

GENERAL INFORMATION	
<i>About the University and Its Mission</i>	6
<i>West Chester University Organizational Chart</i>	9
ADMISSIONS	
<i>Undergraduate Admissions Standards</i>	11
<i>Admission Application Statistics</i>	12
<i>First Time Full-Time Freshmen by Admission Type</i>	13
<i>SAT Score Distribution- Fall 2010</i>	13
<i>SAT Average Scores</i>	15
<i>Feeder High Schools: Fall 2010</i>	16
<i>Admission Yield Statistics: Fall 2010</i>	17
<i>First-Time Freshmen Admission Yield</i>	178
<i>First-Time Transfer Admission Yield</i>	189
ENROLLMENT	
<i>Head Count Enrollment: Fall 2005 to 2010</i>	23
<i>Enrollment by State: Fall 2006 to Fall 2010</i>	24
<i>Enrollment by Pennsylvania County of Residence: Fall 2010</i>	26



Table of Contents (continued)

<i>Transfer Students Feeder Colleges: Fall 2010</i>	21
<i>Head Count Enrollment by Race/Ethnicity and Gender</i>	27
<i>Head Count Enrollment by College</i>	28
<i>Head Count Enrollment by Level</i>	30
<i>Credit Hours and Student FTE Enrollment</i>	31
RETENTION AND GRADUATION	
<i>Retention & Graduation Rates for First-Time, Full-Time Freshmen: University sum</i>	33
<i>Second-Year Retention Rates for First-Time, Full-Time Freshmen by Race/Ethnicity and by Gender</i>	34
<i>Four and Six-Year Graduation Rates by Race/Ethnicity and by Gender</i>	35
ACADEMIC AND DEGREE PROGRAMS	
<i>Undergraduate Degrees and Majors</i>	37
<i>Graduate Degrees and Majors</i>	38
<i>Professional and Program Accreditations</i>	39
DEGREES CONFERRED	43
REOURCES, SERVICES & FACILITIES	60



Quick Facts

West Chester University
West Chester, PA 19383
Telephone 610/436-1000
<http://www.wcupa.edu/>

Founded	1871
President	Dr. Greg R. Weisenstein
University Accreditation	Middle States Commission on Higher Education (MSCHE)
Fall 2010 Enrollment	14,492
Undergraduate	12,234
Graduate	2,258
Fall 2010 Credit Hours	
Undergraduate	11,971
Graduate	1,521
Authorized Degree Programs	187
Degrees Awarded in 2009-2010	
Bachelors	2,422
Masters	631
Library Collections	100,669



GENERAL INFORMATION



About the University and Its Mission

The West Chester University Mission Statement

West Chester University, a member of the Pennsylvania State System of Higher Education, is a public, regional, comprehensive institution committed to providing access and offering high-quality undergraduate education, select post-baccalaureate and graduate programs, and a variety of educational and cultural resources for its students, alumni, and citizens of southeastern Pennsylvania.

The West Chester University Values Statement

West Chester University is committed to attracting, enrolling, and graduating quality students from a wide variety of educational, cultural, and economic backgrounds. This endeavor requires the University to attract and retain highly qualified faculty and staff and to provide each member of the University community with learning and leadership development opportunities. To this end, the University supports and encourages programs which benefit all people and which seek to eradicate discrimination and injustice. We treasure what we believe to be the highest principles of American society: the worth and uniqueness of each individual, the belief that success is to be earned by individual effort put forth in an environment founded on equality of opportunity, and the appreciation of the ideal of an inclusive society.

We believe that it is incumbent upon all members of our community—staff, students, faculty and administrators—to conduct themselves with civility toward one another at all times. We value the special talents and contributions of each member of our community. We further affirm the worth and dignity of each member and the shared responsibility of all to treat each other as individuals, with respect and courtesy.

As a university owned by the citizens of Pennsylvania, we value our mission to provide the best educational opportunities possible which will enable the University community to successfully address the concerns of a global society. To this end, West Chester



University seeks to provide diligent advising for students and to focus on teaching students to think clearly and critically, to make logical and ethical judgments, and to communicate effectively with others.

West Chester University's community strongly supports the principles of academic integrity and academic responsibility, viewing both as the province of every member of the campus community. We hold the highest esteem for teaching directed toward student learning and affirm that mastery of content as well as mastery of teaching skills necessary to communicate such content is paramount.

This values statement is intended to be a living document which will serve West Chester University as it changes and evolves in the coming years.

About West Chester University of Pennsylvania

West Chester University offers bachelors and masters degrees in the arts and sciences, teacher training and certification, advanced study preparation in fields such as medicine and law, education for specific professions, and continuing education.

Total enrollment at West Chester University includes approximately 12,234 undergraduate students and 2,258 graduate students. While most undergraduates are recent high school graduates preparing for career objectives, many others are older individuals, including veterans and homemakers, who either never before had the opportunity for a college education or whose schooling was interrupted.

Most students are residents of Pennsylvania but students from other states and foreign countries are welcome. The student body at West Chester University represents a cross section of many ethnic, racial, and religious groups and includes students from all socioeconomic levels.

Like the world around it, West Chester University is constantly transforming. The school continues to broaden and modify the nature and number of its programs to reflect the needs of its students in their endeavor to prepare themselves for success and fulfillment in life.



The History of West Chester University of Pennsylvania

Founded in 1871, West Chester University began as West Chester Academy, a private, state-aided school that existed from 1812 to 1869. The academy enjoyed strong support from the highly intellectual Chester County Cabinet of the Natural Sciences of the pre-Civil War decades. It was recognized as one of Pennsylvania's leading preparatory schools, and its experience in teacher training laid the groundwork for the normal school years that were to follow.

As the state began to take increasing responsibility for public education, the academy was transformed into West Chester Normal School, still privately owned but state certified. The normal school admitted its first class, consisting of 160 students, on September 25, 1871. In 1913, West Chester became the first of the normal schools to be owned outright by the Commonwealth.

West Chester became West Chester State Teachers College in 1927 when Pennsylvania initiated a four-year program of teacher education. In 1960, as the Commonwealth paved the way for liberal arts programs in its college system, West Chester was renamed West Chester State College, and two years later introduced the liberal arts program that turned the one-time academy into a comprehensive college.

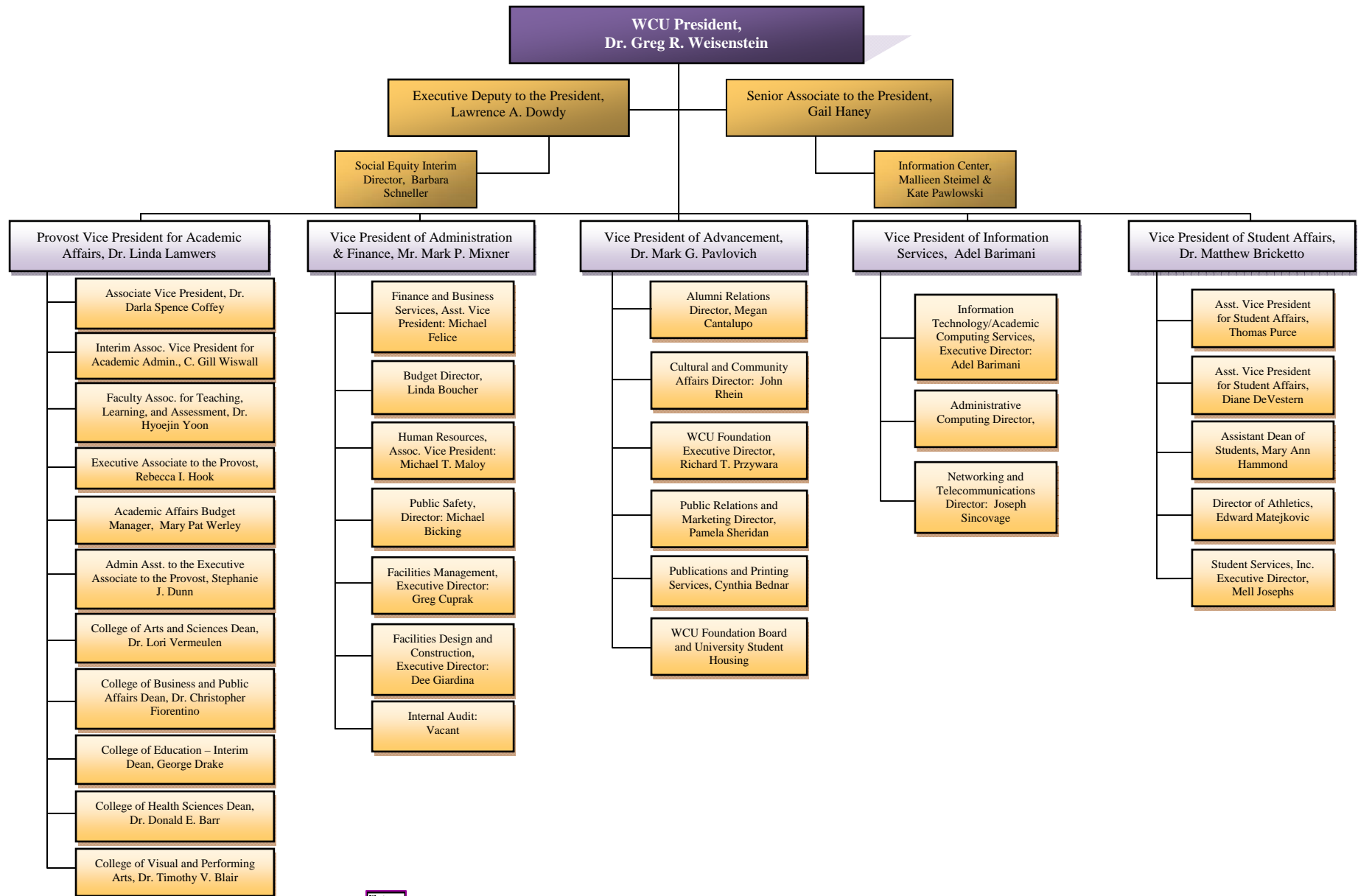
In recognition of the historic merit of the campus, in 1981 the West Chester State College Quadrangle Historic District was placed on the National Register of Historic Places. The buildings included in this historic district are Philips Memorial Building, Ruby Jones Hall, Recitation Hall, and the Old Library. Except for Philips, these buildings are all constructed of native Chester County serpentine stone.

West Chester State achieved another major milestone with passage of the State System of Higher Education bill. West Chester became one of the 14 universities in the State System of Higher Education on July 1, 1983. Along with its new name -- West Chester University of Pennsylvania of the State System of Higher Education -- the institution acquired a new system of governance and the opportunity to expand its degree programs.

<http://www.wcupa.edu/>



Organizational Chart



ADMISSIONS



Undergraduate Admissions Standards

West Chester University prides itself on the holistic approach used in evaluating applicant credentials. Each application is reviewed individually, and we carefully consider scholastic performance and academic preparation to determine an individual's potential for success.

For regular admission as a first-year student we recommend successful completion of a college preparatory curriculum in high school, honors and AP classes are a plus, rank in class in the 50th percentile or better, a grade point average of 3.00+, and a minimum combined SAT score of 1000 or better (prefer a minimum of 500 in both verbal and math.) It is important to realize that these factors are guidelines for consideration. The academic profile of the regular admits who enroll at West Chester University is a mean SAT combined score of 1,000, a rank in the top third of their class or 68% percentile, and a grade point average of 3.39.

Applicants who do not meet regular admissions standards may be considered for a special admissions program if appropriate or denied admission and counseled to enroll at another college or university for a minimum of 24-30 credits before reapplying as a transfer student.

Transfer applicants must have a minimum grade point average of 2.00 for admissions consideration. The majority of our transfers have a Cumulative GPA of 2.50 or better prior to transferring to the University. Some of our academic programs require a higher grade point average and specific course prerequisites. Community college of Pennsylvania students who have earned an Associate of Arts or Associate of Science degree and students who have completed 12 or more transferable credits from a State System University with a 2.00 or above have an Academic Passport that provides entry into any university in the State System of Higher Education. For more information on admissions requirements and the Academic Passport, please contact the Office Admissions at (610) 436-3411 or e-mail ugadmiss@wcupa.edu



Admission Application Statistics- Fall 2010

Applications, Acceptances, and Enrollment of First-Time Freshmen by Ethnicity and Gender

	Fall 2009			Fall 2010			Total	
	Male	Female	Total	Male	Female	Total	Change	% Change
African American								
Applied	579	1,188	1,767	674	1,257	1,931	164	9.3
Accepted	164	321	485	184	342	526	41	8.5
Enrolled	73	105	178	85	148	233	55	30.9
Asian								
Applied	167	214	381	162	226	388	7	1.8
Accepted	71	121	192	80	111	191	-1	-0.5
Enrolled	17	22	39	21	28	49	10	25.6
Caucasian								
Applied	4,109	6,536	10,645	4,457	7,347	11,804	1,159	10.9
Accepted	2,114	3,507	8,621	1,856	3,257	5,113	-3,508	-40.7
Enrolled	752	1,156	1,908	607	1,042	1,649	-259	-13.6
Hispanic								
Applied	176	357	533	244	431	675	142	26.6
Accepted	89	182	271	124	223	347	76	28.0
Enrolled	29	56	85	46	69	115	30	35.3
Native American								
Applied	9	25	34	55	79	134	100	294.1
Accepted	4	17	21	20	35	55	34	161.9
Enrolled	1	5	6	5	9	14	8	133.3
NRA/Not Supplied, Multi-Racial								
Applied	111	144	255	83	106	191	-64	-25.1
Accepted	33	44	77	13	23	36	-41	-53.2
Enrolled	16	9	25	4	3	7	-18	-72.0
Total								
Applied	5,151	8,464	13,615	5,677	9,446	15,123	1,508	11.1
Accepted	2,475	4,192	6,667	2,277	3,991	6,268	-399	-6.0
Enrolled	888	1,353	2,241	768	1,299	2,067	-174	-7.8



First-Time, Full-Time Freshmen by Admission Type

Admittance Type	2006		2007		2008		2009		2010	
	N	%	N	%	N	%	N	%	N	%
Regular	1,564	83.0	1,568	82.5	1,564	83.0	1,847	82.4	1,713	83.1
ADP ACT 101	48	2.5	42	2.2	48	2.5	54	2.4	57	2.8
ADP Non-ACT 101	79	4.2	77	4.1	79	4.2	109	4.9	101	4.9
Special Admission	194	10.3	214	11.3	194	10.3	231	10.3	191	9.3
Total	1,885		1,901		1,885		2,241		2,062	

SAT Score Distribution: Fall 2010

SAT- Verbal Distribution

Score	2006		2007		2008		2009		2010	
	N	%	N	%	N	%	N	%	N	%
700 - 800	21	1.1	20	1.1	21	1.1	26	1.5	61	3.0
600 - 699	252	13.4	294	15.5	252	13.4	287	13.0	484	23.5
500 - 599	1,036	55.0	1,058	55.7	1,036	55.0	1,207	52.6	1,163	56.4
400 - 499	539	28.6	492	25.9	539	28.6	654	29.7	328	15.9
300 - 399	37	2.0	35	2.0	37	2.0	67	3.0	25	1.2
200 - 299	0	0	0	0	0	0	0	0	0	0
No Scores	0	0	2	0	0	0	0	0	1	0
Total	1,901		1,885		1,957		2,241		2,062	



SAT- Mathematics Distribution

Score	2006		2007		2008		2009		2010	
	N	%	N	%	N	%	N	%	N	%
700 - 800	27	1.4	16	0.8	27	0.9	26	1.2	38	3.1
600 - 699	315	16.7	307	16.1	315	17.7	532	17.6	450	18.2
500 - 599	1,056	56.0	1,085	57.1	1,056	53.8	1,223	54.6	1135	55.1
400 - 499	436	23.1	459	24.1	436	24.0	394	23.6	375	21.8
300 - 399	50	2.7	32	1.7	50	3.5	66	2.9	63	1.8
200 - 299	1	0.1	0	0.0	1	0.1	0	0	0	0
No Scores	0	0.0	2	0.1	0	0.0	0	0	1	0
Total	1,901		1,885		1,957		2,241		2,062	



SAT Average Scores

	Critical Reading			Mathematics			Combined		
	WCU	PA	US	WCU	PA	US	WCU	PA	US
Fall 2010	544			533			1,077		
Fall 2009	523	493	501	535	501	515	1,058	1,477	1,509
Fall 2008	523	494	502	535	501	515	1,058	995	1,511
Fall 2007	525	493	502	533	499	515	1,058	992	1,511
Fall 2006	527	493	503	535	500	518	1,062	993	1,518
Fall 2005	532	501	508	535	503	520	1,067	1,004	1,028
Fall 2004	529	501	508	532	502	518	1,061	1,003	1,026
Fall 2003	528	500	507	530	502	519	1,058	1,002	1,026
Fall 2002	519	498	504	526	500	516	1,045	998	1,020
Fall 2001	522	500	506	525	499	514	1,047	999	1,020



Feeder High Schools: Fall 2010

Top Pennsylvania High Schools of Entering Freshmen

<i>School</i>	<i>Count</i>
DOWNTOWN HS EAST CAMPUS	35
NORTH PENN HIGH SCHOOL	32
AVON GROVE HIGH SCHOOL	31
B. REED HENDERSON HIGH SCHOOL	28
DOWNTOWN HS WEST CAMPUS	26
BISHOP SHANAHAN HIGH SCHOOL	25
WEST CHESTER BAYARD RUSTIN HS	23
ABINGTON HIGH SCHOOL	22
CARDINAL O'HARA HIGH SCHOOL	22
CENTRAL BUCKS HIGH SCHOOL SOUTH	20
COUNCIL ROCK HIGH SCHOOL SOUTH	20
HATBORO-HORSHAM SENIOR HS	20
ARCHBISHOP PRENDERGAST HS	19
GARNET VALLEY HIGH SCHOOL	19
PARKLAND HIGH SCHOOL	19
UPPER DARBY HIGH SCHOOL	19
WEST CHESTER EAST HIGH SCHOOL	18
HAVERFORD HIGH SCHOOL	17
UNIONVILLE HIGH SCHOOL	17
WILSON HIGH SCHOOL	17
MARPLE NEWTOWN HIGH SCHOOL	16
NESHAMINY HIGH SCHOOL	16
SPRING-FORD SENIOR HIGH SCHOOL	16
BENSALEM HIGH SCHOOL	15
COUNCIL ROCK HIGH SCHOOL NORTH	15
EMMAUS HIGH SCHOOL	15
NAZARETH AREA HIGH SCHOOL	15
RIDLEY HIGH SCHOOL	15
DALLASTOWN AREA HIGH SCHOOL	14
COATESVILLE AREA SENIOR HS	13
CONESTOGA HIGH SCHOOL	13

<i>School</i>	<i>Count</i>
KENNETT HIGH SCHOOL	13
SOUDERTON AREA HIGH SCHOOL	13
STRATH HAVEN HIGH SCHOOL	13
SUN VALLEY HIGH SCHOOL	13
OWEN J. ROBERTS HIGH SCHOOL	12
PENNSBURY HS EAST CAMPUS	12
PERKIOMEN VALLEY HIGH SCHOOL	12
EXETER TOWNSHIP SENIOR HS	11
NORRISTOWN AREA HIGH SCHOOL	11
PENNCREST HIGH SCHOOL	11
SPRINGFIELD HIGH SCHOOL	11
ARCHBISHOP CARROLL HIGH SCHOOL	10
CENTRAL BUCKS HIGH SCHOOL EAST	10
CHELTENHAM HIGH SCHOOL	10
CONESTOGA VALLEY SENIOR HS	10
EAST PENNSBORO AREA HIGH SCHOOL	10
FRANKLIN LEARNING CENTER HS	10
GREAT VALLEY HIGH SCHOOL	10
MANHEIM TOWNSHIP HIGH SCHOOL	10
PENN MANOR HIGH SCHOOL	10
UPPER DUBLIN HIGH SCHOOL	10
WHITEHALL HIGH SCHOOL	10
BISHOP MCDEVITT HIGH SCHOOL	9
CENTRAL HIGH SCHOOL	9
CHEROKEE HIGH SCHOOL	9
EAST STROUDSBERG AREA HS SOUTH	9
LOWER MORELAND HIGH SCHOOL	9
NAZARETH ACADEMY	9
PHILADELPHIA HS FOR GIRLS	9
SUSQUEHANNA TOWNSHIP HS	9
TOTAL	926



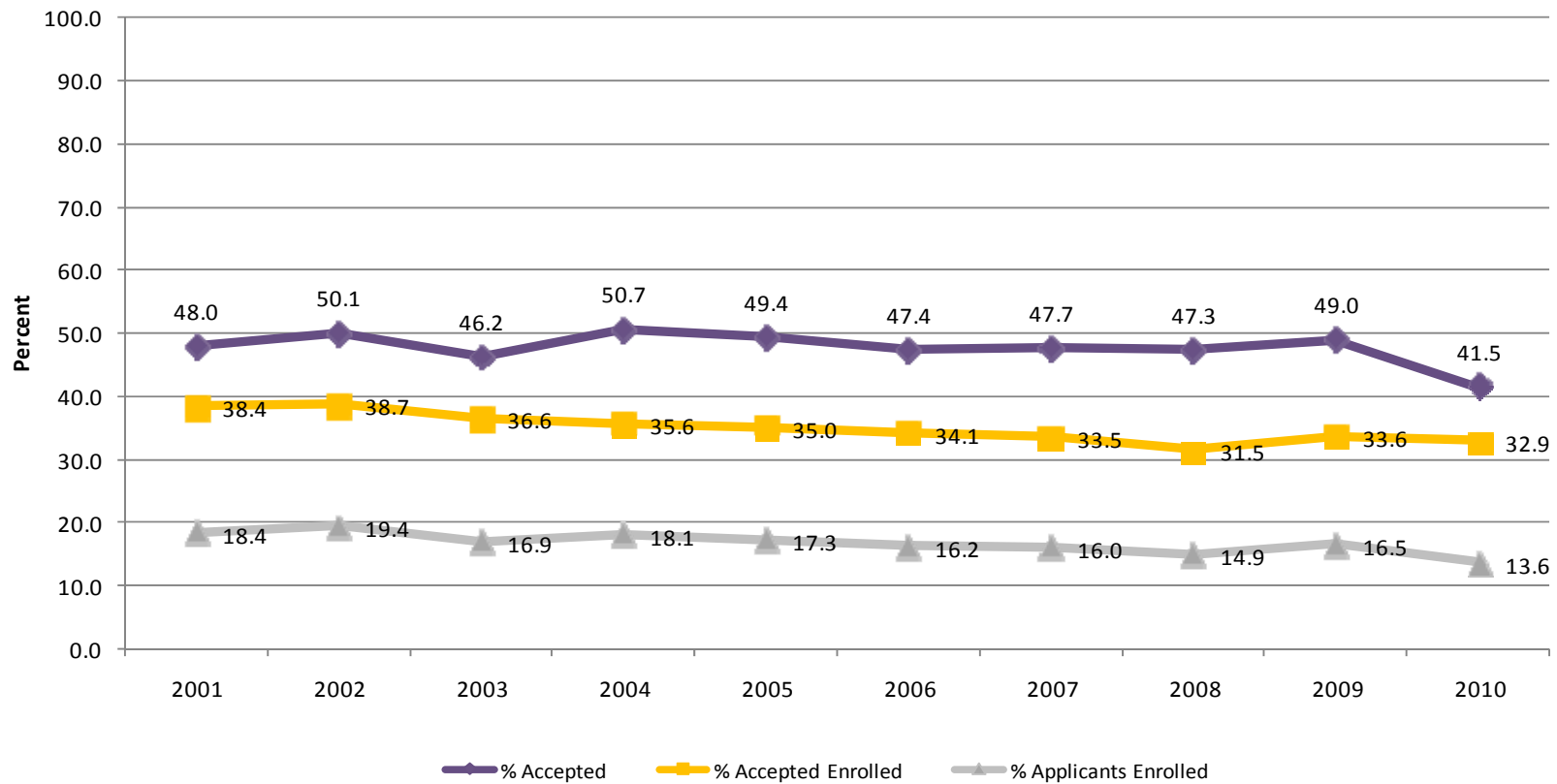
Admission Yield Statistics: Fall 2010

First-Time Freshmen Admission Yield

Year	# of Applicants	# Accepted	% Accepted	# Full-Time Enrolled	% Accepted Full-time Enrolled	% of Applicants Enrolled
2001	8,851	4,245	48.0	1,631	38.4	18.4
2002	9,100	4,563	50.1	1,768	38.7	19.4
2003	10,207	4,720	46.2	1,729	36.6	16.9
2004	10,401	5,273	50.7	1,879	35.6	18.1
2005	11,013	5,438	49.4	1,901	35.0	17.3
2006	11,669	5,530	47.4	1,885	34.1	16.2
2007	12,237	5,834	47.7	1,957	33.5	16.0
2008	13,353	6,317	47.2	1,993	31.5	14.9
2009	13,615	6,667	49.0	2,241	33.6	16.5
2010	15,123	6,268	41.5	2,062	32.9	13.6
5-YR	37.32%	15.26%	-15.99%	8.47%	-6.0%	-21.39%
1-YR	11.08%	-5.98%	-15.31%	-7.99%	-2.1%	-17.58%



First-Time Freshmen Admission Yield



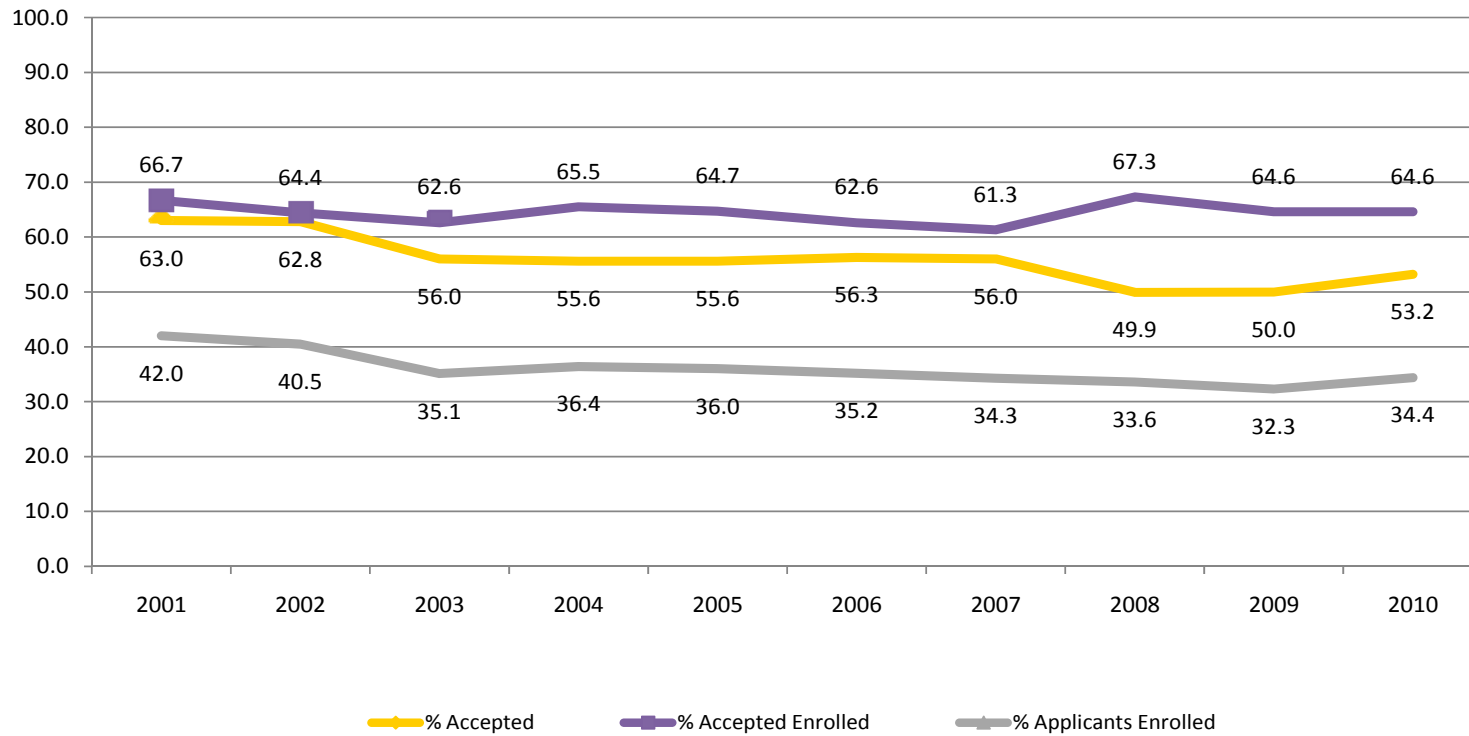
First-Time Transfer Admission Yield

Year	# of Applicants	# Accepted	% Accepted	# Enrolled	% of Accepted Enrolled	% of Applicants Enrolled
2001	2,127	1,339	63.0	893	66.7	42.0
2002	2,189	1,375	62.8	886	64.4	40.5
2003*	2,578	1,444	56.0	904	62.6	35.1
2004*	2,638	1,468	55.6	961	65.5	36.4
2005*	2,673	1,487	55.6	962	64.7	36.0
2006*	2,690	1,514	56.3	948	62.6	35.2
2007*	2,839	1,589	56.0	974	61.3	34.3
2008*	3,224	1,609	49.9	1,070	66.5	33.2
2009*	3,639	1,821	50.0	1,176	64.6	32.3
2010*	3,607	1,920	53.2	1,241	64.6	34.4
5-YR	34.94%	29.12%	-4.32%	29.00%	-0.15%	6.50%
1-YR	-0.88%	5.44%	6.40%	5.53%	0.00%	-4.44%

* Definition of Transfer for SSHE includes those who enrolled previously as non-degree



First-Time Transfer Admission Yield



Feeder Colleges: Fall 2010

Top Institutions Previously Attended by New Fall Undergraduate Transfer Students
[Excludes students who transitioned from non-degree to degree (T7) as well as Transfers with first degree at WCU(T8)]

Name	Count	Percent of Total	Type	State
Delaware County Community College	287	23.6	2 Year Public	PA
Montgomery County Community College	145	11.9	2 Year Public	PA
Bucks County Community College	67	5.5	2 Year Public	PA
Pennsylvania St Univ University Park	62	5.1	4 Year Public	PA
Community College Philadelphia	32	2.6	2 Year Public	PA
Harrisburg Area Community College	29	2.4	2 Year Public	PA
Millersville University Pa	25	2.1	4 Year Public	PA
Shippensburg University Pa	24	2.0	4 Year Public	PA
Northampton Co Area Community College	20	1.6	2 Year Public	PA
Indiana University Pennsylvania	18	1.5	4 Year Public	PA
Temple University	17	1.4	4 Year Private	PA
Lehigh County Community College	16	1.3	2 Year Public	PA
Kutztown University	16	1.3	4 Year Public	PA
Bloomsburg University	13	1.1	4 Year Public	PA
Lock Haven University	11	0.9	4 Year Public	PA
Camden County Community College	10	0.8	2 Year Public	NJ
Brookdale Community College	9	0.7	2 Year Public	NJ
East Stroudsburg University	9	0.7	4 Year Public	PA
Gwynedd-Mercy College	8	0.7	4 Year Private	PA
Immaculata University	8	0.7	4 Year Private	PA
Reading Area Community College	8	0.7	2 Year Public	PA



ENROLLMENT



Head Count Enrollment by Gender and Ethnicity: Fall 2010

	Undergraduate		Graduate		
	Full-Time	Part-time	Full-Time	Part-time	Total
Gender					
Male	4,504	465	228	419	5,616
Female	6,636	629	566	1,045	8,876
Ethnicity					
African American	1,007	129	86	111	1,333
American Indian	47	8	6	2	63
Asian	231	30	20	40	321
Caucasian	9,375	885	613	1,260	12,133
Hispanic	407	28	25	26	486
Non-Resident Alien, Multi-Cultural, Not supplied	73	14	44	25	156

Head Count Enrollment by Degree Status and College: Fall 2010

	Undergraduate		Graduate		
	Full-Time	Part-time	Full-Time	Part-time	Total
Degree Status					
Degree Seeking	11,077	798	782	1,219	13,876
Non-degree Seeking	63	296	12	245	616
College					
Arts and Sciences	3,640	324	243	322	4,529
Business and Public Affairs	2,034	162	134	186	2,516
Education	1,265	30	205	498	1,998
Health Sciences	1,840	229	180	167	2,416
Visual and Performing Arts	649	36	21	50	756
Undeclared	1,712	313	11	241	2,277



Enrollment by State: Fall 2007 to Fall 2010

STATE	Fall 2007			Fall 2008			Fall 2009			Fall 2010			Rank
	U-Grad	Grad	Total	U-Grad	Grad	Total	U-Grad	Grad	Total	U-Grad	Grad	Total	
Arizona	0	0	0	0	0	0	0	0	0	0	1	1	
Arkansas	0	0	0	0	0	0	1	0	1	1	0	1	
California	4	1	5	3	0	3	3	1	4	1	3	4	
Colorado	1	1	2	1	0	1	1	0	1	1	0	1	
Connecticut	14	2	16	15	5	20	17	4	21	13	2	15	
Delaware	142	53	195	144	52	196	138	58	196	153	57	210	3
District of Columbia	0	1	1	0	1	1	1	0	1	4	1	5	
Florida	3	0	3	1	1	2	4	1	5	4	2	6	
Georgia	1	1	2	0	0	0	0	0	0	1	2	3	
Hawaii	1	0	1	0	0	0	0	0	0	1	0	1	
Illinois	1	0	1	1	0	1	1	0	1	1	1	2	
Indiana	0	0	0	2	1	3	4	0	4	2	1	3	
Kansas	0	1	1	0	1	1	0	1	1	0	0	0	
Kentucky	1	1	2	1	0	1	0	0	0	0	0	0	
Maine	2	0	2	0	0	0	0	1	1	1	1	2	
Maryland	63	13	76	73	10	83	67	9	76	77	14	91	4
Massachusetts	6	0	6	7	0	7	5	0	5	8	1	9	
Michigan	1	1	2	0	2	2	1	1	2	0	2	2	
Minnesota	2	0	2	1	0	1	1	1	2	0	1	1	
Mississippi	0	0	0	0	0	0	0	0	0	0	0	0	
Missouri	0	0	0	0	2	2	0	1	1	0	0	0	
Montana	0	0	0	0	1	1	0	1	1	0	0	0	
Nebraska	1	0	1	0	0	0	0	0	0	0	0	0	
Nevada	0	0	0	0	0	0	0	0	0	0	0	0	
New Hampshire	3	1	4	2	1	3	1	1	2	1	1	2	
New Jersey	975	58	1,033	991	52	1,043	1,045	64	1,109	1,096	60	1,156	2
New Mexico	1	0	1	1	0	1	0	0	0	0	0	0	
New York	43	9	52	38	12	50	45	11	56	51	12	63	5
North Carolina	2	1	3	3	0	3	2	1	3	3	1	4	



Enrollment by State: Fall 2007 to Fall 2010 (continued)

STATE	Fall 2007			Fall 2008			Fall 2009			Fall 2010			Rank
	U-Grad	Grad	Total	U-Grad	Grad	Total	U-Grad	Grad	Total	U-Grad	Grad	Total	
Ohio	2	4	6	5	3	8	5	1	6	4	0	4	
Oklahoma	0	0	0	2	0	2	0	0	0	0	1	1	
Oregon	1	1	2	1	0	1	0	0	0	0	0	0	
Pennsylvania	9,796	1,939	11,735	10,147	1,971	12,118	10,548	2,125	12,673	10,777	2,058	12,835	1
Puerto Rico	0	0	0	0	0	0	0	0	0	0	0	0	
Rhode Island	2	0	2	2	0	2	2	0	2	2	0	2	
South Carolina	3	0	3	3	0	3	4	1	5	0	1	1	
Tennessee	0	1	1	0	1	1	0	0	0	0	0	0	
Texas	2	0	2	2	0	2	2	1	3	3	1	4	
Vermont	1	0	1	0	0	0	0	0	0	0	0	0	
Virgin Islands	0	0	0	0	0	0	1	0	1	0	0	0	
Virginia	23	7	30	24	4	28	14	2	16	15	5	20	
Washington	1	0	1	0	0	0	0	0	0	0	0	0	
West Virginia	1	0	1	1	0	1	1	0	1	2	0	2	
Wisconsin	0	0	0	2	0	2	0	0	0	1	0	1	
Armed Forces	0	0	0	1	0	1	1	0	1	1	0	1	
Foreign	10	14	24	8	17	25	5	5	10	10	29	39	
TOTAL	11,109	2,110	13,219	11,482	2,137	13,619	11,920	2,291	14,211	12,234	2,257	14,492	
In-State	9,796	1,939	11,735	10,147	1,971	12,118	10,548	2,125	12,673	10,777	2,057	12,834	
Out-of-State	1,313	171	1,484	1,335	166	1,501	1,372	166	1,538	1,457	200	1,657	
In-State Percentage	88.2%	91.9%	88.8%	88.4%	92.2%	89.0%	88.5%	92.8%	89.2%	88.1%	91.1%	88.6%	



Enrollment by County for Pennsylvania Residence: Fall 2010 (Top 10 Counties with Most Enrollments Ranked)

County	Total	Percent	Rank
Adams	43	0.33	
Allegheny	39	0.30	
Armstrong	2	0.02	
Beaver	7	0.05	
Berks	493	3.84	6
Blair	10	0.08	
Bradford	12	0.09	
Bucks	1184	9.22	4
Butler	2	0.02	
Cambria	4	0.03	
Cameron	2	0.02	
Carbon	31	0.24	
Centre	11	0.09	
Chester	3563	27.76	1
Clarion	6	0.05	
Clearfield	3	0.02	
Clinton	7	0.05	
Columbia	13	0.10	
Crawford	2	0.02	
Cumberland	166	1.29	
Dauphin	144	1.12	
Delaware	2294	17.87	2
Elk	2	0.02	
Erie	5	0.04	
Fayette	2	0.02	
Franklin	27	0.21	
Fulton	0	0.00	
Huntingdon	4	0.03	
Indiana	3	0.02	
Jefferson	0	0.00	
Juniata	2	0.02	
Lackawanna	144	1.12	
Lancaster	481	3.75	7

County	Total	Percent	Rank
Lawrence	1	0.01	
Lebanon	44	0.34	
Lehigh	282	2.20	8
Luzerne	124	0.97	
Lycoming	19	0.15	
McKean	1	0.01	
Mercer	3	0.02	
Mifflin	3	0.02	
Monroe	83	0.65	
Montgomery	1844	14.37	3
Montour	4	0.03	
Northampton	241	1.88	10
Northumberland	23	0.18	
Perry	16	0.12	
Philadelphia	991	7.72	5
Pike	37	0.29	
Potter	2	0.02	
Schuylkill	83	0.65	
Snyder	13	0.10	
Somerset	0	0.00	
Sullivan	2	0.02	
Susquehanna	9	0.07	
Tioga	1	0.01	
Union	11	0.09	
Venango	0	0.00	
Warren	1	0.01	
Washington	3	0.02	
Wayne	18	0.14	
Westmoreland	4	0.03	
Wyoming	4	0.03	
York	259	2.02	9
Missing	2	0.02	
Total	12,836	100.00	



Head Count Enrollment: Fall 2006 to 2010

Five-Year Enrollment by Ethnicity and Gender

Undergraduate Students

Ethnicity	2006		2007		2008		2009		2010	
	Male	Female	Male	Female	Male	Female	Male	Female	Male	Female
Caucasian	308	624	328	659	336	661	4,151	6,011	4,228	6,032
African American	18	12	13	19	13	21	371	674	413	723
Hispanic	80	130	96	124	99	131	121	253	162	273
Asian	108	193	109	193	115	226	101	134	105	156
Native American	3,626	5,675	3,768	5,768	3915	5896	13	23	21	34
Not Supplied	11	18	17	13	16	14	23	23	25	22
Nonresident Alien	4	9	-	4	0	2	9	13	4	2
Unknown	3	2	1	0	10	20	-	-	11	23
Total	4,158	6,663	4,332	6,780	4,504	6,971	4,789	7,131	4,969	7,265

Graduate Students

Ethnicity	2006		2007		2008		2009		2010	
	Male	Female	Male	Female	Male	Female	Male	Female	Male	Female
Caucasian	33	73	43	87	49	94	513	1,431	523	1,350
African American	1	-	1	0	0	2	58	112	59	138
Hispanic	13	27	15	31	23	32	6	31	13	38
Asian	7	16	6	25	4	30	22	52	23	37
Native American	433	1,410	431	1,398	477	1,361	1	4	2	6
Not Supplied	22	25	40	31	32	25	2	5	3	4
Nonresident Alien	1	-	2	-	1	0	24	30	0	2
Unknown	-	-	-	-	0	7	-	-	24	36
Total	510	1,551	538	1,572	586	1,551	626	1,665	647	1,611



Head Count Enrollment: Fall 2006 to 2010 Enrollment by College

Undergraduate Students

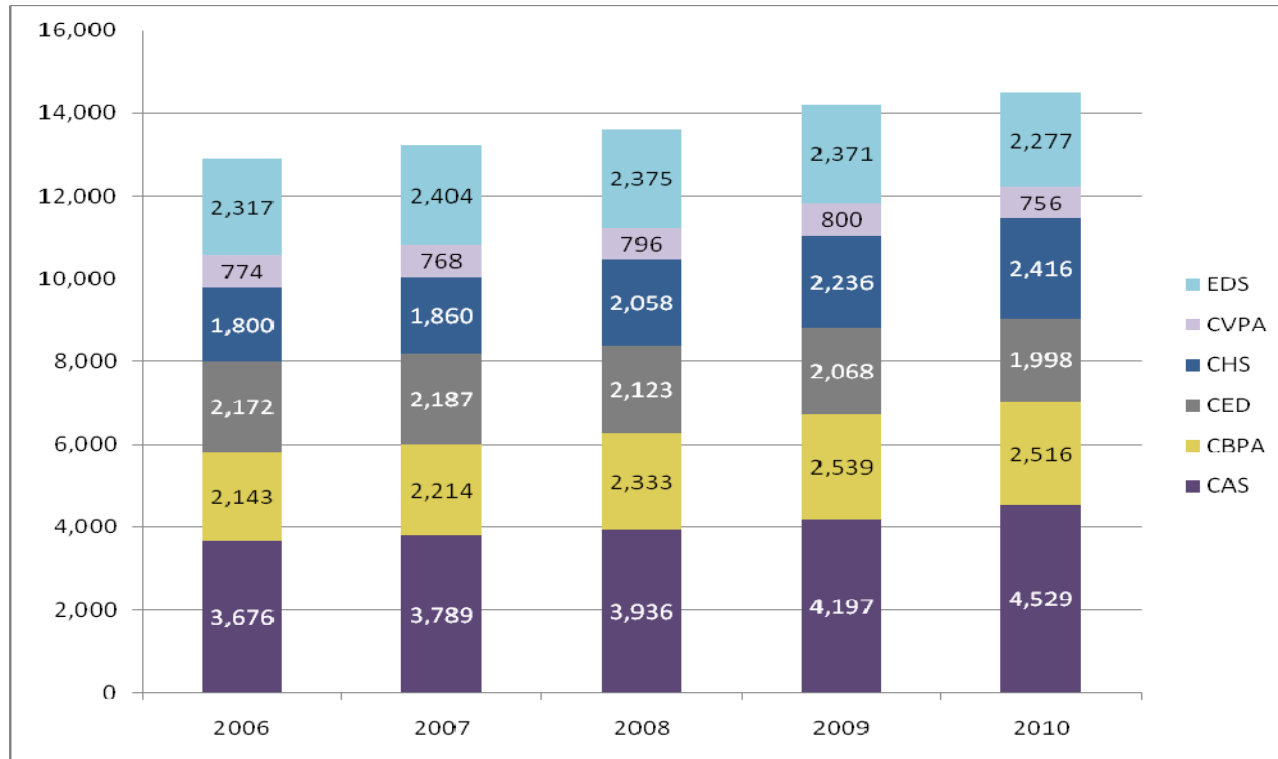
College	2006	2007	2008	2009	2010
College of Arts and Sciences	3,291	3,360	3,468	3,637	3,964
College of Business and Public Affairs	1,928	1,984	2,094	2,245	2,196
College of Education	1,447	1,400	1,371	1,330	1,295
College of Health Sciences	1,514	1,585	1,761	1,931	2,069
College of Visual & Performing Arts	717	704	728	724	685
Non-Degree/Undeclared	1,924	2,079	2,062	2,053	2,025
Total	10,821	11,112	11,484	11,919	12,234

Graduate Students

College	2006	2007	2008	2009	2010
College of Arts and Sciences	385	429	468	560	565
College of Business and Public Affairs	215	230	239	294	320
College of Education	725	787	752	738	703
College of Health Sciences	286	275	297	305	347
College of Visual & Performing Arts	57	64	68	76	71
Non-Degree/Undeclared	393	325	313	318	252
Total	2,061	2,110	2,137	2,291	2,258



Combined Student Enrollment by College and Schools: Fall 2006 to Fall 2010



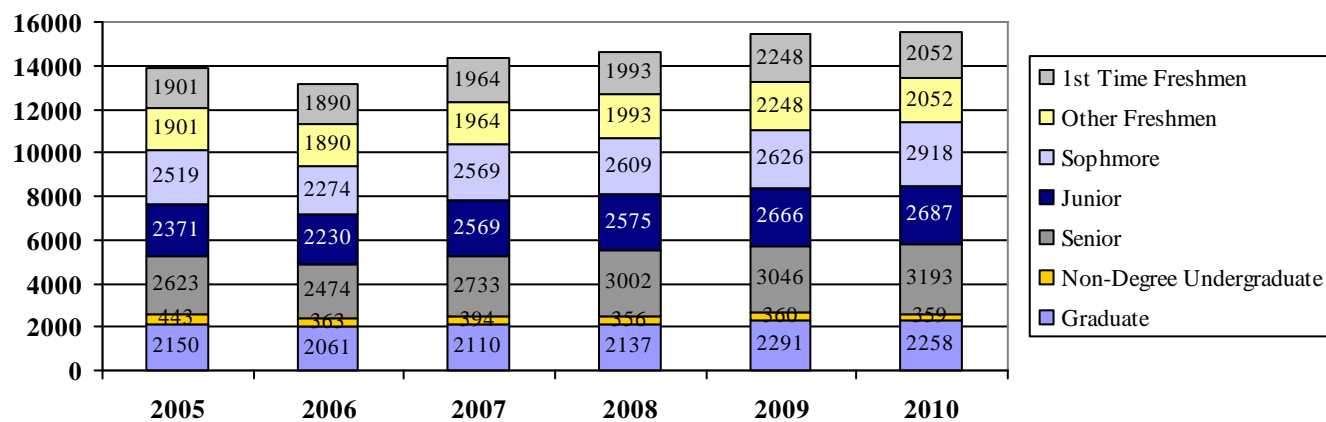
Note: Non-degree and Students with undeclared majors are depicted in EDS (Education Services).



Head Count Enrollment by Student Level: Fall 2004 to Fall 2010

Student Level	2004	2005	2006	2007	2008	2009	2010
1 st Time Freshmen	1,879	1,901	1,890	1,964	1,993	2,248	2,052
Other Freshmen	1,396	981	1,590	884	949	974	1,025
Sophomore	2,100	2,519	2,274	2,569	2,609	2,626	2,918
Junior	2,159	2,371	2,230	2,569	2,575	2,666	2,687
Senior	2,566	2,623	2,474	2,733	3,002	3,046	3,193
Non-Degree Undergraduate	544	443	363	394	356	360	359
Graduate	2,178	2,150	2,061	2,110	2,137	2,291	2,258
Total	12,822	12,988	12,882	13,223	13,621	14,211	14,492

Enrollment by Student Level: Fall 2002 to Fall 2010



Credit Hours and Student FTE Enrollment FY 2005-06 to FY 2009-10

	05-06	06-07	07-08	08-09	09-10
Lower Division Full-Time Equivalent Students	6,838.0	6,670.0	6,869.0	7,057.5	7,499.0
Upper Division Full-Time Equivalent Students	3,859.0	3,894.0	4,045.0	4,284.8	4,472.0
Graduate Division Full-Time Equivalent Students	1,340.0	1,301.0	1,384.0	1,427.1	1,521.0
Total Full-Time Equivalent Students	12,037.0	11,865.0	12,298.0	12,769.4	13,492.0

	05-06	06-07	07-08	08-09	09-10
College of Arts & Sciences	176,081.0	172,757.0	176,243.0	178,910.0	190,846.0
College of Business and Public Affairs	54,913.0	53,810.0	58,345.0	59,975.0	63,522.0
College of Education	49,243.0	47,555.0	47,884.0	47,109.0	48,049.0
College of Health Sciences	42,827.0	44,369.0	48,010.0	50,811.0	55,532.0
College of Visual and Performing Arts	28,066.0	27,706.0	28,349.5	29,066.0	28,571.5
Undeclared/Non-Degree	1,939.0	1,950.0	1,906.0	1,723.0	1,926.0
Total University	353,069.0	348,145.0	360,737.5	367,594.0	388,746.5

	Lower	Upper	Total Undergraduate	Graduate	Total
College of Arts & Sciences	143,370.0	38,502.0	181,872.0	8,974.0	190,846.0
College of Business and Public Affairs	24,348.0	32,458.0	56,806.0	6,716.0	63,522.0
College of Education	9,327.0	26,074.0	35,401.0	12,648.0	48,049.0
College of Health Sciences	22,226.5	26,743.5	48,970.0	6,862.0	55,832.0
College of Visual and Performing Arts	20,123.5	6,817.0	26,940.5	1,631.0	28,571.5
Undeclared/Non-Degree	436.0	1,490.0	1,926.0	-	1,926.0
Total University	216,831.0	132,084.5	351,915.5	36,831.0	388,746.5



RETENTION AND GRADUATION



Retention and Graduation Rates for First-time, Full-Time, First-Year, Degree-Seeking, Student Cohorts --University Summary

Fall Cohort	N 1st Fall	2nd Fall		3rd Fall		4th Fall		5th Fall				6th Fall				7th Fall			
		Cohort Retained		Cohort Retained		Cohort Retained		Cumulative Graduated within 4 yrs*		Cohort Retained		Cumulative Graduated within 5 yrs		Cohort Retained		Cumulative Graduated within 6 yrs		Cohort Retained	
		n	% IF	n	% IF	n	% IF	n	% IF	n	% IF	n	% IF	n	% IF	n	% IF	n	% IF
1994	1364	1084	79.5	906	66.4	823	60.3	319	23.4	473	34.7	666	48.8	109	8.0	741	54.3	30	2.2
1995	1384	1129	81.6	985	71.2	902	65.2	363	26.2	512	37.0	761	55.0	89	6.4	816	59.0	33	2.4
1996	1454	1170	80.5	1003	69.0	945	65.0	376	25.9	527	36.2	771	53.0	103	7.1	833	57.3	35	2.4
1997	1577	1298	82.4	1116	70.8	1055	66.9	409	26.0	605	38.4	861	54.6	109	6.9	932	59.1	30	1.9
1998	1629	1353	83.2	1173	72.1	1070	65.8	474	29.1	577	35.5	898	55.2	108	6.6	964	59.3	34	2.1
1999	1715	1413	82.6	1219	71.3	1150	67.3	444	26.0	653	38.2	943	55.1	91	5.3	1023	59.8	24	1.4
2000	1721	1412	82.3	1275	74.3	1166	68.0	536	31.3	569	33.2	961	56.0	103	6.0	1037	60.5	35	2.0
2001	1631	1384	85.2	1222	75.2	1149	70.7	571	35.1	520	32.0	996	61.3	79	4.9	1050	64.6	29	1.8
2002	1768	1461	82.7	1290	73.0	1236	70.0	642	36.4	536	30.4	1049	59.4	97	5.5	1123	63.6	25	1.4
2003	1726	1466	85.1	1298	75.3	1207	70.1	685	39.8	481	27.9	1053	61.1	89	5.2	1121	65.1	21	1.2
2004	1874	1570	84.0	1361	72.8	1306	69.8	734	39.3	535	28.6	1153	61.7	95	5.1	1219	65.2	29	1.6
2005	1897	1607	84.8	1442	76.1	1378	72.8	813	42.9	528	27.9	1230	64.9	81	4.3				
2006	1885	1616	85.8	1467	77.9	1401	74.4	793	42.1	553	29.4								
2007	1957	1650	84.4	1511	77.3	1428	73.0												
2008	1993	1683	84.5	1517	76.2														
2009	2241	1909	85.2																
2010	2062																		

Note: Data is from PASSHE enrollment at census dates and PASSHE completions files. Includes degree sweeps and IPEDS exclusions through 10/2010



Second-Year Retention Rates for First-Time, Full-Time, Degree-Seeking Freshmen by Race/Ethnicity

Fall Cohort	African American			Asian			Latino			Native American			Caucasian		
	N 1 st Fall	N 2 nd Fall	% Retained	N 1 st Fall	N 2 nd Fall	% Retained	N 1 st Fall	N 2 nd Fall	% Retained	N 1 st Fall	N 2 nd Fall	% Retained	N 1 st Fall	N 2 nd Fall	% Retained
2004	166	130	79.3	35	28	80.0	58	48	82.8	4	3	75.0	1609	1359	84.6
2005	171	147	87.0	38	30	78.9	66	56	84.8	3	3	100.0	1614	1367	84.7
2006	174	151	87.3	43	36	85.7	66	46	69.2	5	4	80.0	1597	1379	86.3
2007	190	151	79.5	39	35	89.7	62	44	71.0	9	9	100.0	1656	1411	85.3
2008	201	168	83.6	44	37	84.1	90	77	85.6	5	4	80.0	1648	1396	84.8
2009	178	152	85.4	39	34	87.2	85	64	75.3	6	6	100.0	1908	1631	85.5
2010	233			49			115			14			1644		

Second-Year Retention Rates for First-Time, Full-Time, Degree-Seeking Freshmen by Gender

Fall Cohort	Male			Female		
	N 1 st Fall	N 2 nd Fall	% Retained	N 1 st Fall	N 2 nd Fall	% Retained
2004	656	543	82.8	1214	1027	84.6
2005	677	556	82.1	1217	1051	86.4
2006	683	558	81.7	1200	1058	88.2
2007	741	612	82.7	1215	1038	85.4
2008	762	635	83.4	1231	1048	85.1
2009	888	745	83.9	1353	1164	86.0
2010	767			1295		



Four-Yr Graduation Rates for First-Time, Full-Time Freshmen by Ethnicity

Fall Cohort	African American			Asian			Latino			Native American			Caucasian		
	N 1st Fall	N Grad	% Grad	N 1st Fall	N Grad	% Grad	N 1st Fall	N Grad	% Grad	N 1st Fall	N Grad	% Grad	N 1st Fall	N Grad	% Grad
2001	138	31	22.6	37	8	21.6	48	8	16.7	7	1	14.3	1396	522	37.5
2002	142	41	28.9	37	10	27.0	42	8	19.0	8	2	25.0	1537	581	37.8
2003	182	47	25.8	25	8	32.0	58	19	32.8	1	0	0	1447	606	42.0
2004	166	39	23.8	35	13	37.1	58	14	24.1	4	1	25.0	1609	667	41.5
2005	171	51	30.2	38	13	34.2	66	26	39.4	3	1	33.3	1614	722	44.7
2006	174	41	23.7	43	14	33.3	66	18	27.3	5	1	20.0	1597	719	45.0

Six-Yr Graduation Rates for First-Time, Full-Time Freshmen by Ethnicity

Fall Cohort	African American			Asian			Latino			Native American			Caucasian		
	N 1st Fall	N Grad	% Grad	N 1st Fall	N Grad	% Grad	N 1st Fall	N Grad	% Grad	N 1st Fall	N Grad	% Grad	N 1st Fall	N Grad	% Grad
1999	143	76	53.1	30	17	56.7	18	9	52.9	4	1	25.0	1517	917	60.6
2000	143	77	53.8	26	14	58.3	31	19	61.3	5	3	60.0	1510	921	61.2
2001	138	71	51.8	37	17	45.9	48	30	62.5	7	5	71.4	1396	924	66.4
2002	142	76	53.5	37	22	59.5	42	21	50.0	8	4	50.0	1537	999	65.1
2003	182	98	53.8	25	14	56.0	58	34	58.6	1	0	0.0	1447	969	67.1
2004	166	86	52.4	35	20	57.1	58	35	60.3	4	1	25.0	1609	1077	67.0

Four-Yr & Six-Yr Graduation Rates for First-Time, Full-Time Freshmen by Gender

Fall Cohort	Male					Female				
	N 1st Fall	4 Yr Grad		6Yr Grad		N 1st Fall	4 Yr Grad		6 Yr Grad	
		#	%	#	%		#	%	#	%
1999	645	122	19.0	347	54.1	1070	322	30.1	676	63.2
2000	636	127	20.2	332	52.7	1085	409	37.7	705	65.0
2001	608	144	23.8	344	56.8	1023	427	41.9	706	69.3
2002	662	168	25.4	362	54.7	1106	474	42.9	761	68.9
2003	606	152	25.2	355	58.8	1120	533	47.6	766	68.5
2004	658	177	27.0	379	57.8	1216	557	45.9	840	69.2
2005	678	216	31.9			1219	597	49.1		
2006	683	191	28.0			1202	602	50.1		



ACADEMIC AND DEGREE PROGRAMS



Undergraduate Degrees and Majors - Fall 2010

Award	Description	Award	Description	Award	Description
BS	Accounting	BA, TC	French	BS, BSED, TC	Physics
		TC	General Science	BS	Physics-Engineering
BA	Anthropology	BA	Geography	BA	Political Science-Applied Public Policy
BA	Anthropology-Sociology	BA	Geography-Geographic Analysis		
BS, Certificate	Athletic Training	BA	Geography-Urban/Regional Planning	BA	Political Science - International Relations
		BS	Geoscience: Earth Systems	BA	Political Science
BA, BS, BSED, TC	Biology	BS	Geoscience: Environmental	BS	Pre-Business Economics-Finance
BS	Biology: Cell & Molecular	BS	Geoscience: Geology	BS	Pre-Business-Management
BS	Biology: Ecology	BA, TC	German	BS	Pre-Business-Marketing
BS	Biology: Medical Technology	BS, TC	Health & Physical Education	Certificate	Pre-Graduate Program
BS	Biology: Microbiology	BS	Health Science: General	BS	Nutrition and Dietetics
BS	Business Management	BS	Health Science: Respiratory Care	BA	Psychology
BS, BSED, TC	Chemistry	BA, TC	History	BS	Public Health: Environmental
BS	Chemistry-Biology	BA, TC	Latin	BS	Public Health: Health Promotion
BSED	Communication: Media Emphasis	Certificate	Leadership & Civic Engagement	BSN	RN to BSN
BSED	Communication: Speech Emphasis	BA	Liberal Studies: Arts & Sciences	BA, TC	Russian
		BA	Liberal Studies: Career Preparation	BSED	Social Studies: History
BSED	Communication: Theatre Emphasis	BS	Liberal Studies: Professional Studies	BSW	Social Work
		BS	Liberal Studies: Science and Mathematics	BA	Sociology
BA	Communication Studies			BA, TC	Spanish
TC	Communications	BA	Literature	BSED, TC	Special Education
BA	Communicative Disorders	BS	Marketing	TC	Speech Correction
BS	Computer Science	BA, BS, BSED, TC	Mathematics	BA, BFA	Studio Arts
BS	Criminal Justice	BM	Music - Performance	Certificate	TESL
BSED, TC	Early Childhood Education	BM	Music Education: Instrument	BA	Theatre Arts: General
BSED	Earth-Space Science - Geology	BM	Music Education: Keyboard	BA	Theatre Arts: Music Theatre
BSED, TC	Earth-Space Science	BM	Music Education: Voice	BA	Theatre Arts: Performance
BS	Economics	TC	Music Education	BA	Theatre Arts: Technical Production
TC	Elective Social Studies	BM	Music: Elective Studies	BA	Women's Studies
BSED, TC	Elementary Education	BM	Music: Theory & Composition	BS, BSED, TC	Physics
BA, BSED, TC	English	BSN	Nursing		
BS	Exercise Science Specialist	BS	Nutrition and Dietetics		
Certificate	Foreign Language Instructional I	BS	Pharmaceutical Product Development		
BS	Finance				
BS	Forensic & Toxicological Chemistry	BA	Philosophy		
		BA	Philosophy-Religious Studies		



Graduate Degrees and Majors Fall 2010

Award	Description	Award	Description	Award	Description
Certificate	Administration	MA, TC	English	Certificate	Music Technology
MS, Certificate	Applied Statistics	MA	English - Non-Thesis Option	MM	Music: Accompanying
Certificate	Autism	MS	Health and Physical Education: Exercise and Sport Physiology	MM	Music: Piano Pedagogy
MS, TC	Biology			MM	Music: Theory & Composition
MS	Biology - Natural Science	MA, MED, TC	French	MSA, Certificate	Non Profit Administration
MS	Biology - Thesis	TC	General Science	MSN	Nursing
Certificate	Business	Certificate	Geographic Technology	MSN, Certificate	Nursing Education
MBA	Business Administration: Economics-Finance	MA	Geography	Certificate	Orff-Schulwerk
MBA	Business Administration: Executive	MED, TC	German	Certificate	Parish Nursing
MBA	Business Administration: General	Certificate	Gerontology	MA	Philosophy
MBA	Business Administration: Management	TC	Health and Physical Education	MS	Physical Education
MBA	Business Administration: Technology and Electronic Commerce	Certificate	Health Care Administration	MA	Physical Science: Earth Science
Certificate	Business Ethics	MS	Health: Gerontology	Certificate	Piano Pedagogy
MS, TC	Chemistry	Certificate	Health: Integrative Health	Certificate	Professional Counselor Licensure Preparation
MS	Clinical Chemistry	MS	Health: Public Health	MA	Psychology: Clinical
Certificate	Clinical Mental Health	MED	Health: School Health	MA	Psychology: General
MA	Communication Studies	Certificate	Healthcare Ethics	MA	Psychology: Industrial
MA	Communicative Disorders	MA, MED, TC	History	MSA	Public Administration
MS, Certificate	Computer Science	MA, Certificate	Holocaust & Genocide Studies	MPH	Public Health
Certificate	Computer Security	MSA, Certificate	Human Resource Management	MED	Reading
MED	Counseling: Elementary School	MSA	Individualized Program	Certificate	Reading Specialist
MS	Counseling: Higher Education/Student Affairs	Certificate	Information Systems	MSA	Regional Planning
MED	Counseling: Secondary School	Certificate	Kodaly Methodology	Certificate	School Nursing
Certificate	Counseling (Elementary or Secondary) Specialist I	TC	Latin	MED, Certification	Secondary Education
MS	Criminal Justice	MSA, Certificate	Leadership for Women	MSW	Social Work
MS		Certificate	Literacy	MA, MED, TC	Spanish
		MSA	Long-Term Health Care	TC	Speech Correction
		MA, TC	Mathematics	MED, TC	Special Education
		MM, TC	Music Education	MSA	Sport & Athletic Administration
		Certificate	Music Education: 21st Century	Certificate	Teaching and Learning with Technology
				MA, Certificate	TESL
		MM	Music Education: Technology	MSA	Training & Development
		MA	Music History	Certificate	Web Technology
		Certificate	Music Education: 21st Century	MA	Psychology: Clinical
		MM	Music Education: Technology		
		MA	Music History		
		MM	Music Performance		



Professional and Program Accreditations

Institutional Accreditation
West Chester University is accredited by
The Middle States Association of Colleges and Secondary Schools on Higher Education
Toward Associate's, Bachelor's, Master's, and Specialist degrees.

College of Arts and Sciences

Biology BSED and Biology Teaching Certificate --PDE, NCATE, NSTA

Chemistry BS--ACS

Chemistry BSED and Chemistry Teaching Certificate -- PDE, NCATE, NSTA

Communications Teaching Certificate -- PDE, NCATE

Computer Science BS -- ABET

Earth-Space Science BSED and Earth-Space Science Teaching Certificate -- NCATE, NSTA

Elective Social Studies, Geography, History, and Political Science Teaching Certificate--PDE, NCATE, NCSS

English BSED and English Teaching Certificate--PDE, NCATE, NCTE

Forensic & Toxicological Chemistry BS--FEPAC

French MED--NCATE, ACTFL

French Teaching Certificate--PDE, NCATE, ACTFL

General Science Teaching Certificate--PDE, NCATE, NSTA

German MED--NCATE, ACTFL

German Teaching Certificate--PDE, NCATE, ACTFL

History MED--PASSHE, NCATE, NCSS

History Teaching Certificate--PDE, NCATE, NCSS

Latin Teaching Certificate--PDE, NCATE, ACTFL



Professional and Program Accreditations (Continued)

College of Arts and Sciences (Continued)

Mathematics BSED and Mathematics Teaching Certificate--PDE, NCATE, NCTM

Physics BSED and Physics Teaching Certificate--PDE, NCATE, NSTA

Russian Teaching Certificate--PDE, NCATE, ACTFL

Spanish MED --NCATE

Spanish Teaching Certificate--PDE, NCATE, ACTFL

Teaching English as a Second Language MA and Teaching English as a Second Language Certificate--PDE, NCATE

College of Business and Public Affairs

Accounting BS -- AACSB

Business Administration MBA -- AACSB

Business Management BS -- AACSB

Economics BS -- AACSB

Finance BS -- AACSB

Marketing BS -- AACSB

Social Work BSW and Social Work MSW -- CSWE

College of Education

Counseling: Elementary School Counseling MED--PDE, NCATE, CACREP

Counseling: Higher Education/Student Affairs MS--CACREP

Counseling: Secondary School Counseling MED--PDE, NCATE, CACREP

Counseling (Elementary or Secondary) Specialist I Certificate -- PDE, NCATE, CACREP

Early Childhood Education BSED and Early Childhood Education Teaching Certificate -- PDE, NCATE, NAEYC



Professional and Program Accreditations (Continued)

College of Education (Continued)

Early Childhood Education MED -- PASSHE, NCATE, NAEYC

Elementary Education BSED and Elementary Education Teaching Certificate -- PDE, NCATE, ACEI

Elementary Education MED -- PASSHE, NCATE, ACEI

Reading MED and Reading Specialist Certificate -- PDE, NCATE, IRA

Secondary Education MED -- NCATE

Special Education BSED and Special Education Teaching Certificate -- PDE, NCATE, CEC

Special Education MED -- PASSHE, NCATE, CEC

College of Health Sciences

Athletic Training BS -- CAATE

Communicative Disorders Speech Correction Teaching Certificate--PDE, NCATE

Communicative Disorders MA – NCATE, ASHA

Health: School Health MED -- AAHE

Health & Physical Education BS and Health & Physical Education Teaching Certificate -- PDE, NCATE, NASPE

Health & Physical Education: Exercise Physiology MS -- CAAHEP (currently under review)

Health Science: Respiratory Care BS -- CAAHEP

Nursing BSN and Nursing MSN and Nursing Education Certificate -- CCNE

Nursing: Parish Nurse – In moratorium

Nursing: RN to BSN -- CCNE

Nutrition and Dietetics BS -- CADE

Public Health MPH -- CEPH

School Nursing Certificate--PDE, NCATE, CCNE and will also be going into moratorium



Professional and Program Accreditations (Continued)

College of Visual and Performing Arts

Music Education: Instrumental BM--PDE, NCATE, NASM

Music Education: Keyboard BM--PDE, NCATE, NASM

Music Education: Voice BM--PDE, NCATE, NASM

Music Education: Music Technology MM -- NCATE, NASM

Music Education: Orff-Schulwerk MM – NCATE, NASM. AOSA

Music Education: Performance MM and Research Report MM – NCATE. NASM, OAKE

Music Education Teaching Certificate--PDE, NCATE, NASM

Music: Elective Studies BM--NASM

Music History MA--NASM

Music-Performance BM--NASM

Music Performance MM--NASM

Music: Piano Pedagogy MM--NASM

Music: Theory & Composition BM and Music: Theory & Composition MM--NASM

Studio Arts BA and Studio Arts BFA--Beginning the process of NASAD accreditation

Theatre Arts: General BA--Beginning the process of NAST accreditation

Theatre Arts: Music Theatre BA--Beginning the process of NAST accreditation

Theatre Arts: Performance BA--Beginning the process of NAST accreditation

Theatre Arts: Technical Production BA--Beginning the process of NAST accreditation



DEGREES CONFERRED



Undergraduate and Graduate Degrees Conferred: Academic Years 2003-2004 through 2009-2010

Academic Plan		Degree Year						
		2003-04	2004-05	2005-06	2006-07	2007-08	2008-09	2009-10
College of Arts and Sciences								
Anthropology and Sociology								
Undergraduate								
	Anthropology BA	7	7	5	3	11	15	11
	Anthropology-Sociology BA	1	0	0	0	0	0	0
	Sociology BA	29	20	18	24	19	30	24
	Total Undergraduate	37	27	23	27	30	45	35
Graduate								
	Long-Term Health Care MSA	3	1	3	1	0	0	0
	Total Graduate	3	1	3	1	0	0	0
	Department Totals	40	28	26	28	30	45	35
Art								
Undergraduate								
	Studio Arts BA	7	See College of Visual and Performing Arts					
	Studio Arts BFA	47						
	Total Undergraduate	54						
	Department Totals	54						
Biology								
Undergraduate								
	Biology BA	0	3	3	0	3	2	1
	Biology BSED	6	2	6	4	8	8	6
	Biology BS	17	12	14	17	19	34	28
	Biology: Microbiology BS	8	3	3	3	5	7	6
	Biology: Ecology BS	6	5	5	3	1	2	3
	Biology: Medical Technology BS	2	2	1	1	1	1	1
	Biology: Cell & Molecular BS	9	10	5	8	10	7	3
	Total Undergraduate	48	37	37	36	47	61	48
Graduate								
	Biology MS	2	0	4	7	6	5	3
	Biology - Thesis MS	4	1	2	2	3	6	3
	Total Graduate	6	1	6	9	9	11	6
	Department Totals	54	38	43	45	56	72	54

Undergraduate and Graduate Degrees Conferred: Academic Years 2003-2004 through 2009-2010

Academic Plan	Degree Year						
	2003-04	2004-05	2005-06	2006-07	2007-08	2008-09	2009-10
Chemistry							
Undergraduate							
Chemistry BSED	1	4	1	1	0	4	2
Chemistry-Biology * BS	3	3	5	16	7	14	5
Chemistry BS	3	0	4	4	7	7	7
Biochemistry BS	2	0	0	3	3	3	1
Foreign & Toxicology Chemistry BS	9	11	15	15	7	7	10
Total Undergraduate	18	18	25	39	24	35	25
Graduate							
Physical Science: Chemistry MA	1	0	0	0	0	0	0
Chemistry MED	0	1	0	0	0	0	0
Chemistry MS	2	0	1	0	0	0	0
Clinical Chemistry MS	1	4	0	1	1	0	0
Total Graduate	4	5	1	1	1	0	0
Department Totals	22	23	26	40	25	35	25
Communications Studies							
Undergraduate							
Communication Studies BA	88	123	130	114	106	116	122
Communication-Comm/Tha BSED	2	0	1	0	0	0	0
Communication-Theatre/Med BSED	1	0	0	0	0	0	0
Communication-Theatre/Med BSED	0	0	0	0	0	2	0
Total Undergraduate	91	123	131	114	106	118	122
Graduate							
Communication Studies MA	7	10	4	9	6	13	7
Total Graduate	7	10	4	9	6	13	7
Department Totals	98	133	135	123	112	131	129

Undergraduate and Graduate Degrees Conferred: Academic Years 2003-2004 through 2009-2010

Academic Plan	Degree Year						
	2003-04	2004-05	2005-06	2006-07	2007-08	2008-09	2009-10
Computer Science							
Undergraduate							
Computer Science BS	30	33	28	19	21	32	33
Total Undergraduate	30	33	28	19	21	32	33
Graduate							
Computer Science MS	13	12	15	12	9	10	11
Total Graduate	13	12	15	12	9	10	11
Department Totals	43	45	43	31	30	42	44
English							
Undergraduate							
Comparative Literature BA	3	0	5	2	0	0	0
Literature BA	35	38	36	45	12	7	0
English BA: Literature	0	0	0	0	36	59	45
English BA: Writings	0	0	0	0	0	0	12
English BSED: Literature	13	21	28	25	28	34	33
English BSED: Writings	0	0	0	0	0	0	2
Total Undergraduate	51	59	69	72	76	100	92
Graduate							
English MA	10	17	19	24	32	24	24
Writing, Teaching & Criticism MA	0	0	0	1	0	0	0
TESL MA	17	11	16	26	13	14	7
English - Non-Thesis Option MA	2	0	1	0	0	0	0
Total Graduate	29	28	36	51	45	38	31
Department Totals	80	87	105	123	121	138	123

Undergraduate and Graduate Degrees Conferred: Academic Years 2003-2004 through 2009-2010

Academic Plan	Degree Year						
	2003-04	2004-05	2005-06	2006-07	2007-08	2008-09	2009-10
Geology & Astronomy							
Undergraduate							
Earth-Space Science - Environmental BSED	1	0	0	0	0	0	0
Earth-Space Science BSED	3	1	3	7	5	5	2
Earth-Space Science - Geology BSED	5	6	2	0	0	0	0
Geoscience - Earth Systems BS	3	3	2	7	3	9	5
Geoscience: Geology BS	5	3	4	6	7	4	6
Geoscience: Environ Geoscience BS	1	0	0	0	0	1	0
Total Undergraduate	18	13	11	20	15	19	13
Graduate							
Physical Science: Earth Science MA	4	6	2	3	6	4	7
Total Graduate	4	6	2	3	6	4	7
Department Totals	22	19	13	23	21	23	20
Foreign Language							
Undergraduate							
French BA	3	1	3	4	4	8	5
German BA	0	0	0	1	5	5	2
Latin BA	0	0	0	1	1	3	1
Russian BA	2	2	0	1	3	3	2
Spanish BA	5	11	12	12	16	13	26
French BSED	2	2	0	0	0	0	0
German BSED	0	1	0	0	0	0	0
Spanish BSED	5	5	3	1	0	1	0
Total Undergraduate	17	22	18	20	29	33	36

Undergraduate and Graduate Degrees Conferred: Academic Years 2003-2004 through 2009-2010

Academic Plan	Degree Year						
	2003-04	2004-05	2005-06	2006-07	2007-08	2008-09	2009-10
<i>Foreign Language (continued)</i>							
Graduate							
French MA	0	0	1	2	3	3	2
Spanish MA	0	1	1	3	0	2	3
French MED	0	2	1	0	0	1	1
Spanish MED	0	1	3	2	0	2	0
Total Graduate	0	4	6	7	3	8	6
Department Totals	17	26	24	27	32	41	42
<i>History</i>							
Undergraduate							
American Studies BA	2	4	4	0	2	0	0
History BA	23	56	65	62	68	81	84
Social Studies: History BSED	25	9	8	2	0	0	0
Total Undergraduate	50	69	77	64	70	81	84
Graduate							
History MA	8	7	10	10	6	6	10
Holocaust & Genocide Studies MA	2	4	2	2	6	6	6
History MED	0	0	1	5	0	1	2
Total Graduate	10	11	13	17	12	13	18
Department Totals	60	80	90	81	82	94	102
<i>Liberal Studies</i>							
Undergraduate							
Liberal Studies: Arts & Science BA	4	16	18	19	24	23	24
Liberal Studies: Career Pre BA	29	16	6	1	2	0	2
Pharmaceutical Product Dev BS	7	9	8	11	6	11	10
Liberal Studies: Science /Math BS	9	7	8	5	6	9	8
Liberal Studies: Profession BS	107	138	187	179	187	247	160
Total Undergraduate	156	186	227	215	225	290	204
Department Totals	156	186	227	215	225	290	204

Undergraduate and Graduate Degrees Conferred: Academic Years 2003-2004 through 2009-2010

Academic Plan	Degree Year						
	2003-04	2004-05	2005-06	2006-07	2007-08	2008-09	2009-10
Mathematics							
Undergraduate							
Mathematics BA	4	6	4	6	5	3	5
Mathematics-Computer Science BA	1	0	0	0	0	0	0
Mathematics BS	0	0	0	0	9	9	13
Mathematics BSED	12	13	19	24	16	19	14
Total Undergraduate	17	19	23	30	30	31	32
Graduate							
Mathematics MA	2	7	3	5	2	9	7
Applied Statistics MS	0	3	11	9	21	25	24
Total Graduate	2	10	14	14	23	34	31
Department Totals	19	29	37	44	53	65	63
Philosophy							
Undergraduate							
Philosophy BA	6	9	7	6	7	11	11
Philosophy-Religious Studies BA	1	2	1	1	1	2	3
Total Undergraduate	7	11	8	7	8	13	14
Graduate							
Philosophy MA: Applied Ethics	0	0	0	0	0	0	1
Philosophy MA: General	6	5	5	5	3	1	4
Total Graduate	6	5	5	5	3	1	5
Department Totals	13	16	13	12	11	14	19
Physics							
Undergraduate							
Physics BSED	1	0	2	1	2	1	1
Physics BS	4	0	3	4	1	5	5
Physics-Engineering BS	0	1	2	0	0	0	1
Total Undergraduate	5	1	7	5	3	6	7
Department Totals	5	1	7	5	3	6	7

Undergraduate and Graduate Degrees Conferred: Academic Years 2003-2004 through 2009-2010

Academic Plan	Degree Year						
	2003-04	2004-05	2005-06	2006-07	2007-08	2008-09	2009-10
Psychology							
Undergraduate							
Psychology BA	96	102	106	111	125	130	125
Social Studies: Psychology BSED	1	0	0	0	0	0	0
Total Undergraduate	97	102	106	111	125	130	125
Graduate							
Psychology: Clinical MA	13	23	18	14	16	21	32
Psychology: General MA	1	0	2	3	2	2	1
Psychology: Industrial MA	12	9	5	4	14	7	12
Total Graduate	26	32	25	21	32	30	45
Department Totals	123	134	131	132	157	160	170
Theatre Arts							
Undergraduate							
Theatre Arts: Performance BA	5						
Theatre Arts: Music Theatre BA	2	See College of Visual and Performing Arts					
Theatre Arts: General BA	2						
Total Undergraduate	9						
Department Totals	9						
Women's Studies							
Undergraduate							
Women's Studies BA	6	3	5	3	3	4	3
Total Undergraduate	6	3	5	3	3	4	3
Graduate							
Leadership for Women MSA	0	1	1	0	1	0	0
Total Graduate	0	1	1	0	1	0	0
Department Totals	6	4	6	3	4	4	3
College of Arts and Sciences Undergraduate Totals	711	723	795	782	812	998	873
College of Arts and Sciences Graduate Totals	110	126	131	150	150	162	167
College of Arts and Sciences Totals	821	849	926	932	962	1160	1040

Undergraduate and Graduate Degrees Conferred: Academic Years 2003-2004 through 2009-2010

Academic Plan	Degree Year						
	2003-04	2004-05	2005-06	2006-07	2007-08	2008-09	2009-10
College of Business and Public Affairs							
Accounting							
Undergraduate							
Accounting BS	66	48	57	56	63	91	104
Total Undergraduate	66	48	57	56	63	91	104
Department Totals	66	48	57	56	63	91	104
Criminal Justice							
Undergraduate							
Criminal Justice BS	107	97	118	84	70	86	109
Total Undergraduate	107	97	118	84	70	86	109
Graduate							
Criminal Justice - Thesis MS	1	1	0	0	0	0	0
Criminal Justice MS	9	12	12	11	12	18	19
Total Graduate	10	13	12	11	12	18	128
Department Totals	117	110	130	95	82	104	
Economics and Finance							
Undergraduate							
Economics BS	4	6	7	4	8	4	8
Finance BS	49	46	47	40	52	69	67
Total Undergraduate	53	52	54	44	60	73	75
Graduate							
Bus Admin: Economics-Finance							
MBA	2	11	14	5	6	7	5
Total Graduate	2	11	14	5	6	7	5
Department Totals	55	63	68	49	66	80	80

Undergraduate and Graduate Degrees Conferred: Academic Years 2003-2004 through 2009-2010

Academic Plan	Degree Year						
	2003-04	2004-05	2005-06	2006-07	2007-08	2008-09	2009-10
Geography							
Undergraduate							
Geography BA	6	5	11	5	9	13	9
Geography-Urban/Regional PI BA	3	3	1	2	5	1	5
Geography-Geographic Analyses BA	4	4	3	1	5	1	1
Total Undergraduate	13	12	15	8	19	15	15
Graduate							
Geography MA	14	4	9	6	7	13	8
Regional Planning MSA	1	3	1	0	0	3	0
Total Graduate	15	7	10	6	7	16	8
Department Totals	28	19	25	14	26	31	23
Political Science							
Undergraduate							
Political Science-Applied Pub Policy BA	4	6	1	0	3	1	1
Political Science - Int'l Relations BA	17	11	18	10	14	19	17
Political Science BA	32	46	48	44	46	50	35
Social Studies: Geography BSED	0	1	0	0	0	0	0
Social Studies: Political Science BSED	1	0	0	0	0	0	0
Total Undergraduate	54	64	67	54	63	70	53
Graduate							
Human Resource Mgmt. MSA	8	5	4	6	0	0	0
Individualized Program MSA	4	3	3	2	3	4	1
Human Resource Mgmt. MSA	0	0	0	0	9	3	10
Public Administration MSA	1	2	1	5	5	0	4
Training & Developmental MSA	2	0	3	1	0	1	2
Nonprofit Administration MSA	0	0	0	0	0	1	5
Total Graduate	15	10	11	14	17	9	22
Department Totals	69	74	78	68	80	79	75

Undergraduate and Graduate Degrees Conferred: Academic Years 2003-2004 through 2009-2010

Academic Plan	Degree Year						
	2003-04	2004-05	2005-06	2006-07	2007-08	2008-09	2009-10
Management							
Undergraduate							
Business Management BS	126	131	125	132	109	136	124
Total Undergraduate	126	131	125	132	109	136	124
Graduate							
Bus Admin: General MBA	2	4	12	8	15	16	28
Bus Admin: Management MBA	6	10	10	15	5	1	1
Bus Admin: Executive MBA	13	18	0	0	0	0	1
Total Graduate	21	32	22	23	20	17	30
Department Totals	147	163	147	155	129	153	154
Marketing							
Undergraduate							
Marketing BS	105	99	92	89	74	112	95
Total Undergraduate	105	99	92	89	74	112	95
Graduate							
Bus Admin: Tech-Electronic MBA	30	12	5	4	4	1	1
Total Graduate	30	12	5	4	4	1	1
Department Totals	135	111	97	93	78	113	96
Social Work							
Undergraduate							
Social Work BSW	31	49	38	42	43	39	33
Total Undergraduate	31	49	38	42	43	39	33
Graduate							
Social Work MSW	17	28	37	32	40	30	29
Total Graduate	17	28	37	32	40	30	29
Department Totals	48	77	75	74	83	69	62
College of Business and Public Affairs Undergraduate Totals	555	552	566	509	501	622	608
College of Business and Public Affairs Graduate Totals	110	113	111	95	106	98	114
College of Business and Public Affairs Totals	665	665	677	604	607	720	722

Undergraduate and Graduate Degrees Conferred: Academic Years 2003-2004 through 2009-2010

Academic Plan	Degree Year						
	2003-04	2004-05	2005-06	2006-07	2007-08	2008-09	2009-10
College of Education							
Counseling and Educational Psychology							
Graduate							
Counseling: Elementary MED	20	17	14	16	18	26	16
Counseling: Secondary MED	17	19	26	29	32	32	32
Counseling: Higher Ed/Stu Affairs MS	27	29	31	23	27	16	18
Total Graduate	64	65	71	68	77	74	66
Department Totals	64	65	71	68	77	74	66
Early Childhood and Special Education							
Undergraduate							
Early Childhood Education BSED	51	50	48	38	37	44	49
Special Education BSED	53	60	50	52	62	73	83
Total Undergraduate	104	110	98	90	99	117	132
Graduate							
Special Education MED	6	17	22	20	30	21	23
Early Childhood Education MED	0	0	0	2	2	17	22
Total Graduate	6	17	22	22	32	38	45
Department Totals	110	127	120	112	131	155	177
Elementary Education							
Undergraduate							
Elementary Education BSED	256	241	235	267	214	234	243
Total Undergraduate	256	241	235	267	214	234	243
Graduate							
Elementary Education MED	40	46	26	33	40	36	35
Total Graduate	40	46	26	33	40	36	35
Department Totals	296	287	261	300	254	270	278
Literacy							
Graduate							
Reading MED	61	50	40	56	40	42	54
Total Graduate	61	50	40	56	40	42	54
Department Totals	61	50	40	56	40	42	54

Undergraduate and Graduate Degrees Conferred: Academic Years 2003-2004 through 2009-2010

Academic Plan	Degree Year						
	2003-04	2004-05	2005-06	2006-07	2007-08	2008-09	2009-10
Professional and Secondary Education							
Graduate							
Secondary Education MED	11	11	14	14	16	29	11
Educational Research MS	2	0	0	4	1	0	0
Total Graduate	13	11	14	18	17	29	11
Department Totals	13	11	14	18	17	29	11
College of Education Undergraduate Totals	360	351	333	357	313	351	375
College of Education Graduate Totals	184	189	173	197	206	219	211
College of Education Totals	544	540	506	554	519	570	586
College of Health Sciences							
Health							
Undergraduate							
Public Health: Health Promotion BS	30	12	15	13	26	13	16
Public Health: Environmental BS	1	1	3	2	4	7	8
Nutrition and Dietetics BS	0	24	35	51	51	58	58
Health Science: General BS	8	7	11	10	11	7	10
Health Science: Respiratory Care BS	7	5	21	27	21	25	22
Total Undergraduate	46	49	85	103	113	110	114
Graduate							
Health: School Health MED	2	7	15	10	3	13	10
Public Health MPH: Community	21	16	21	44	26	29	29
Public Health MPH: Integrative							8
Public Health MPH: Administrative							4
Public Health MPH: Environment							6
Health: Environment Health MS	1	0	0	0	0	0	0
Health Services MSA	2	1	0	0	0	0	0
Health: Public Health MS	0	0	0	1	0	0	0
Total Graduate	26	24	36	55	29	42	57
Department Totals	72	73	121	158	142	152	171

Undergraduate and Graduate Degrees Conferred: Academic Years 2003-2004 through 2009-2010

Academic Plan	Degree Year						
	2003-04	2004-05	2005-06	2006-07	2007-08	2008-09	2009-10
<i>Kinesiology</i>							
Undergraduate							
Health & Physical Education BS	51	68	73	86	82	96	90
Pre-Physical Therapy BS	0	0	0	0	0	0	3
Exercise Science Specialist BS	32	21	31	40	21	43	47
Total Undergraduate	83	89	104	126	103	139	140
Graduate							
Health & Phys Ed: Exercise Phys MS	6	5	3	3	5	9	8
Sport & Athletic Admin MSA	10	13	17	14	8	14	14
MS in Physical Education	2	1	1	1	0	2	0
Total Graduate	18	19	21	18	13	25	22
Department Totals	101	108	125	144	116	164	162
<i>Nursing</i>							
Undergraduate							
Nursing BSN	68	83	82	84	65	62	61
RN to BSN	0	0	0	5	25	31	40
Total Undergraduate	68	83	82	89	90	93	101
Graduate							
Nursing - Education MSN	2	1	2	4	10	4	2
Nursing MSN	10	6	10	8	9	8	5
Total Graduate	12	7	12	12	19	12	7
Department Totals	80	90	94	101	109	105	108
<i>Sports Medicine</i>							
Undergraduate							
Athletic Training BS	9	14	29	18	17	26	30
Total Undergraduate	9	14	29	18	17	26	30
Department Totals	9	14	29	18	17	26	30

Undergraduate and Graduate Degrees Conferred: Academic Years 2003-2004 through 2009-2010

Academic Plan	Degree Year						
	2003-04	2004-05	2005-06	2006-07	2007-08	2008-09	2009-10
Communicative Disorders							
Undergraduate							
Communicative Disorders BA	12	12	19	30	30	38	39
Total Undergraduate	12	12	19	30	30	38	39
Graduate							
Communicative Disorders MA	31	19	25	25	31	27	25
Total Graduate	31	19	25	25	31	27	25
Department Totals	43	31	44	55	61	65	64
College of Health Sciences Undergraduate Totals	218	247	319	366	353	406	424
College of Health Sciences Graduate Totals	87	69	94	110	92	106	111
College of Health Sciences Totals	305	316	413	476	445	512	535
College of Visual and Performing Arts							
Applied Music							
Undergraduate							
Music: Performance Instrument							3
Music: Performance Jazz BM							1
Music: Performance Voice BM							4
Music: Performance Keyboard BM	10	8	9	7	12	11	2
Total Undergraduate	10	8	9	7	12	11	10
Graduate							
Music: Piano Pedagogy MM	3	1	1	3	2	4	1
Music Performance MM	1	3	5	6	4	8	6
Total Graduate	4	4	6	9	6	12	7
Department Totals	14	12	15	16	18	23	17
Art							
Undergraduate							
Studio Arts BA	See	3	3	6	1	1	4
Studio Arts BFA	College of Arts & Sciences	48	63	62	46	70	38
Total Undergraduate		51	66	68	47	71	42
Department Totals		51	66	68	47	71	42

Undergraduate and Graduate Degrees Conferred: Academic Years 2003-2004 through 2009-2010

Academic Plan	Degree Year						
	2003-04	2004-05	2005-06	2006-07	2007-08	2008-09	2009-10
<i>Instrumental Music</i>							
Undergraduate							
Music: Instrument Perform BM	2	0	0	0	0	0	0
Total Undergraduate	2	0	0	0	0	0	0
Department Totals	2	0	0	0	0	0	0
<i>Music History</i>							
Graduate							
Music History MA	1	0	2	1	1	0	1
Total Graduate	1	0	2	1	1	0	1
Department Totals	1	0	2	1	1	0	1
<i>Music Theory and Composition</i>							
Undergraduate							
Music: Elective Studies BM	9	17	16	17	10	7	9
Music: Composition BM	1	4	1	0	0	0	0
Music: Theory BM	2	1	0	0	0	0	0
Music: Theory and Composition BM	2	0	2	1	2	7	3
Total Undergraduate	14	22	19	18	12	14	12
Graduate							
Music: Composition MM	0	0	0	0	1	0	1
Music: Music Theory MM	0	0	0	1	2	0	0
Music: Theory & Composition MM	0	0	0	0	0	0	1
Total Graduate	0	0	0	1	3	0	2
Department Totals	14	22	19	19	15	14	14

Undergraduate and Graduate Degrees Conferred: Academic Years 2003-2004 through 2009-2010

Academic Plan	Degree Year						
	2003-04	2004-05	2005-06	2006-07	2007-08	2008-09	2009-10
Music Education							
Undergraduate							
Music Education: Instrument BM	17	34	24	20	38	38	30
Music Education: Voice BM	9	14	14	13	8	15	24
Music Education: Keyboard BM	5	4	3	8	3	6	7
Total Undergraduate	31	52	41	41	49	59	61
Graduate							
Music Education MM	25	4	6	15	10	18	15
Music Education-Technology	0	0	0	1	1	2	3
Total Graduate	25	4	6	16	11	20	18
Department Totals	56	56	47	57	60	79	79
Theatre Arts							
Undergraduate							
Theatre Arts: Performance BA	See College of Arts & Sciences	2	7	1	5	6	2
Theatre Arts: Music Theatre BA		4	2	2	7	7	4
Theatre Arts: Tech Production BA		6	4	3	2	3	5
Theatre Arts: General BA		2	5	6	1	4	6
Total Undergraduate		14	18	12	15	20	17
Department Totals		14	18	12	15	20	17
<i>College of Visual and Performing Arts Undergraduate Totals</i>	57	147	153	146	135	175	145
<i>College of Visual and Performing Arts Graduate Totals</i>	30	8	14	27	21	32	28
<i>College of Visual and Performing Arts Totals</i>	87	155	167	173	156	207	170
<i>University Undergraduate Totals</i>	1,901	2,020	2,166	2,160	2,114	2,552	2,422
<i>University Graduate Totals</i>	521	505	523	579	575	617	631
<i>University Totals</i>	2,422	2,525	2,689	2,739	2,689	3,169	3,053

RESOURCES, SERVICES & FACILITIES



Educational and General Budget Expenditure by Category FY 2006/07 - FY 2008/09 (based on PASSHE FINRPT)

	2006-07		2007-08		2008-09		2009-10	
	FY Amount	%	FY Amount	%	FY Amount	%	FY Amount	%
Instruction	68,805,587	39.50	71,463,412	38.20	74,470,409	38.53	78,694,933	38.89
Organized Research	800,435	0.46	891,320	0.48	1,729,899	0.90	1,795,966	0.89
Public Service	1,949,255	1.12	2,438,265	1.30	2,674,477	1.38	2,596,737	1.28
Academic Support	18,263,434	10.48	19,766,253	10.56	22,590,271	11.69	22,854,567	11.30
Student Services	10,165,427	5.84	11,766,667	6.29	13,165,249	6.81	13,378,716	6.61
Institutional Support	21,895,653	12.57	25,389,145	13.57	21,534,248	11.14	22,374,065	11.06
Physical Plant	13,162,801	7.56	14,636,908	7.82	16,049,127	8.30	16,352,937	8.08
Grant & Scholarships	6,389,103	3.67	6,481,084	3.46	6,668,451	3.45	8,757,504	4.33
Auxiliary Enterprises	22,004,405	12.63	21,490,813	11.49	20,821,853	10.77	22,209,497	10.98
Depreciation	10,764,136	6.18	12,775,613	6.83	13,550,243	7.01	13,312,713	6.58
Total	174,200,236	100.00	187,099,480	100.00	193,254,227	100.00	202,327,633	100.00

Revenues - Large Categories FY 2006/07 – FY 2008/09 (based on PASSHE FINRPT)

	FY 2005-06	FY 2006-07	FY 2007-08	FY 2008-09	FY 2009-10
Tuition & Fees	84,154,390	85,721,203	91,824,645	96,264,155	96,720,899
State Appropriations	51,974,028	53,717,738	55,116,455	54,126,757	50,631,659
Government Contracts & Grants					
Federal	190,318	315,539	195,011	217,170	300,016
State	0	0	4,864	0	0
Local	0	0	0	2,880	52,270
System	9,992	5,998	981,517	88,117	745,690
Other Sources	3,450,401	5,315,454	4,093,762	3,829,349	3,200,195
Private Gifts, Grants & Contracts	450	0	0	19,868	572,575
Endowment Income	0	0	0	0	0
Income From Other Investments	1,936,620	2,634,876	3,107,856	2,502,533	1,887,372
Total e E&G Revenue	141,716,199	147,710,808	155,324,110	157,050,829	172,967,007

Major Educational and General Revenue by Source FY 2004/05 to FY 2010/11

	FY 2005/06 ¹	FY 2006/07 ²	FY 2007/08 ³	FY 2008/09 ⁴	FY 2009/10 ⁵	FY 2010/11 ⁵	FY 2011/12 ⁵
Tuition & Fees	86,039,710	87,494,006	93,842,057	98,712,358	110,471,333	117,911,349	120,681,543
State Appropriations	50,706,242	52,538,957	53,773,619	52,929,089	50,631,659	51,392,413	51,392,413
Other	5,587,781	8,271,867	7,646,556	6,659,917	14,165,695	11,006,004	6,542,865
Carry Forward Fund Balance	0	0	0	0	8,623	0	0
TOTAL	142,333,733	148,304,830	155,262,232	158,301,364	163,285,901	176,096,549	178,616,821

* Projected

¹ BUDREPORT-08 (rev 061024)

² BUDREPORT-09 (fr PASSHE 071011)

³ BUDREPORT-10 (rev 081031)

⁴ BUDREPORT-11 (rev 091013)

⁵ BUDREPORT-12 (rev10923)

Tuition and Fees by Semester

	2005	2006	2007	2008	2009	2010
Undergraduate Tuition						
Full-Time In-State	\$2,453	\$2,519	\$2,588.50	\$2,679	\$2,777	\$2,902
Full-Time Out-of-State	\$6,133	\$6,299	\$6,472	\$6,698	\$6,943	\$7,255
Per Credit In-State	\$204	\$210	\$216	\$230	\$231	\$242
Per Credit Out-of-State	\$511	\$525	\$539	\$558	\$579	\$605
Undergraduate Fees						
Full-Time In-State	\$588	\$565	\$583	\$599	\$725.70	\$937.85*
Full-Time Out-of-State						\$996.85*
Per Credit In-State	\$47	\$48	\$49	\$50	\$60.18	\$129.92**
Per Credit Out-of-State						\$154.92**
Graduate Tuition						
Full-Time In-State	\$2,944	\$3,024	\$3,107	\$3,215	\$3,333	\$3,483
Full-Time Out-of-State	\$4,711	\$4,839	\$4,972	\$5,144	\$5,333	\$5,573
Per Credit In-State	\$327	\$339	\$345	\$357	\$370	\$387
Per Credit Out-of-State	523	\$538	\$552	\$572	\$593	\$619
Graduate Fees						
Full-Time In-State	\$477	\$484	\$500	\$500	\$664.35	\$807.20
Full-Time Out-of-State						\$866.20
Per Credit In-State	\$54	\$55	\$57	\$50	\$62.56	214.02
Per Credit Out-of-State						\$158.24
Residence Halls	\$2,070	\$2,110				
Meal Plan***	\$957	\$983	\$1,019	\$1,114	\$1,170	1,189

* Includes an additional Student Recreation Center Fee for entering Freshmen

** Part-Time entering freshmen must add an additional Student Recreation Center fee of \$36 to the overall per-credit total

***14 Meals per week

Library

FY 2007-2008 through 2009-2010

	2007-2008	2008-2009	2009-2010	One Year Difference
Library Holdings				
Volumes	783,748	779,524	759,510	-20,014
Microforms	933,192	934,181	926,368	-7,813
E-Books	526,128	557,516	588,313	30,797
Audio/Video units*	74,002	74,010	140,044**	66,034
Circulation (General & Reserve)	101,799	109,138	100,669	-8,469
<i>Total FTE Staff (includes student assistants)</i>	54.79	57.46	55.67	-1.79

*Includes tapes, CDs, and DVDs

**Includes 79,820 streaming audio and video albums/titles

Fact book Evaluation

1. The Fact book was
☐ Very helpful ☐ Neither helpful/not helpful ☐ Not Helpful
2. The sections in the Fact book that were *most helpful* (choose up to three):
☐ Introduction
☐ Admissions
☐ Student enrollment
☐ Retention
3. The sections in the Fact book that were *least helpful* (choose 3)
☐ Introduction
☐ Admissions
☐ Student enrollment
☐ Retention
☐ Academic degree programs & accredited programs
☐ Graduation / degree information
☐ Faculty and staff information
☐ Resources, services and facilities
4. For each section, why was the section **not** helpful (state section first)?
Section: _____

Section: _____

Section: _____

5. What other sections should be included in the Fact book?
Section: _____
Section: _____
6. What other information should be included in the Fact book?
Section: _____
Section: _____
7. The primary use of the Fact book in my department is (check all that apply):
☐ Determination of annual activities ☐ Enrollment planning
☐ Evaluation of academic programs ☐ Budget planning
☐ Comparison with previous academic years ☐ Other, please specify: _____
☐ Comparison with other academic programs
8. Other comments for the Fact book:

