

# **FACT BOOK 2017**

**WEST CHESTER UNIVERSITY OF PENNSYLVANIA**

## **West Chester University of Pennsylvania Office of Institutional Research**

**887 South Matlack Street  
West Chester, PA 19383  
Telephone (610) 436-2835**

**Fax (610) 436-2635**

---

### **Introduction & Acknowledgements**

This Fact Book provides some of the most commonly requested information about West Chester University. Much of the information is drawn from the University's database and state mandated reports. Other offices and sources used are cited throughout the document. The cooperation of those offices and sources is much appreciated.

The Fact Book is divided into several chapters: Admissions, Enrollment, Retention/Graduation Rates, Academic Degree Programs & Accredited Programs, Graduation/Degree Information, and Resources (including financial aid), Services and Facilities.

Comments and suggestions about additional information that might be included are much appreciated. Please forward your suggestions to [ninamdar@wcupa.edu](mailto:ninamdar@wcupa.edu).

Additional institutional information is available on our website: <http://www.wcupa.edu/infoservices/oir/>

## Table of Contents

<b>Table of Contents</b>	2-3
<b>WCU Quick Facts</b>	4
<b>GENERAL INFORMATION</b>	
Statement of Mission and Goals	6-8
West Chester University Organizational Chart	9
<b>ADMISSIONS</b>	
Undergraduate Admissions Standards	11
Admission Application Statistics	12-13
First Time Full-Time First Year by Gender and Race/Ethnicity	14
First Time Full-Time First Year by Admission Type	15
SAT Score Distribution: Fall 2017	16
SAT Average Scores	17
ACT Score Distribution: Fall 2017	18-19
ACT Average Scores	19
Feeder High Schools: Fall 2017	20
Feeder Colleges: Fall 2017	21
First Time First Year Enrollment by County	22
First Time First Year Enrollment by State	23
First-Time First Year Admission Yield Statistics	24
First-Time First Year Admission Yield Chart	25
First-Time Transfer Admission Yield Statistics	26
First-Time Transfer Admission Yield Chart	27
<b>ENROLLMENT</b>	
Head Count Enrollment by Gender and Race/Ethnicity	29

To be continued.....

## Table of Contents (continued)

<b>ENROLLMENT (continued)</b>	
Head Count Enrollment by Degree Status and College Fall 2017	30
Head Count Enrollment by State: Fall 2014 to 2017	31-32
Enrollment by County for Pennsylvania Residents: Fall 2017	33
Head Count Enrollment by Ethnicity and Gender Fall 2013 to Fall 2017	34
Head Count Enrollment by College : Fall 2013 to Fall 2017	35-36
Head Count Enrollment by Student Level: Fall 2012 to 2017	37-38
Credit Hours and Student FTE Enrollment	39-40
<b>RETENTION AND GRADUATION</b>	
Retention & Graduation Rates for First-Time, Full-Time First Year: University Summary	42
Second-Year Retention Rates for First-Time, Full-Time First Year by Race/Ethnicity and by Gender	43
Four and Six-Year Graduation Rates by Race/Ethnicity	44
Four and Six-Year Graduation Rates by Gender	45
<b>ACADEMIC AND DEGREE PROGRAMS</b>	
Undergraduate Degrees and Certificate Programs	47-48
Graduate Degrees and Certificate Programs	49-50
Professional and Program Accreditations	51-52
<b>DEGREES CONFERRED</b>	
Undergraduate and Graduate Degrees Conferred by College and Academic Plan	54-68
<b>RESOURCES, SERVICES &amp; FACILITIES</b>	
Tuition and Fees	70
Library Resources	72

## Quick Facts

**West Chester University**  
**West Chester, PA 19383**  
**Telephone (610) 436-1000**  
**<http://www.wcupa.edu/>**

<b>Founded</b>	1871
<b>President</b>	Christopher M. Fiorentino
<b>University Accreditation</b>	Middle States Commission on Higher Education
<b>Fall 2017 Enrollment*</b>	17,306
Undergraduate	14,451
Graduate	2,855
<b>Fall 2017 Credit Hours</b>	223,862.0
Undergraduate	204,603.0
Graduate	19,259.0
<b>Undergraduate Degree Programs</b>	124
<b>Undergraduate Certificates</b>	6
<b>Undergraduate Non-Degree, Teaching Certification</b>	34
<b>Graduate Degree Programs</b>	98
Master's Programs	94
Doctoral Programs	4
<b>Graduate Certificates</b>	39
<b>Graduate Non-Degree, Teaching Certification, Professional Growth, Letter of Completion</b>	45
<b>Degrees Awarded in 2016-2017</b>	4,503
Bachelor's	3,708
Master's	768
Doctoral	27

\*Represent IPEDS unduplicated total headcount. IPEDS unduplicated total headcount is 17,306.

Degree/Non Degree/Certificate etc. program counts displayed above include only those programs which are offered to incoming new students.



## **General Information**

## Statement of Mission and Goals

West Chester University is a community of educators that develops graduates to succeed personally and professionally and contribute to the common good.

### **WCU GRADUATES WILL:**

Apply scientific reasoning and demonstrate quantitative and qualitative literacy  
Collaborate with others to solve problems and address societal needs  
Communicate effectively and participate in civic discourse  
Engage inclusively in a diverse society  
Understand the ethical implications of decisions and the world in which they live

### **INSTITUTIONAL GOALS:**

To fulfill its mission as a public institution serving the Commonwealth, West Chester University will focus on student success and institutional improvement as measured by the degree to which WCU demonstrates:

Access to learning  
Community and cultural engagement  
Continuous improvement  
Critical thinking  
Inclusion  
Scholarly and creative activities  
Sustainability

## About West Chester University of Pennsylvania

West Chester University offers bachelors and masters degrees in the arts and sciences, teacher training and certification, advanced study preparation in fields such as medicine and law, education for specific professions, and continuing education.

Total enrollment at West Chester University includes 14,451 undergraduate students and 2,855 graduate students. This represents the IPEDS unduplicated headcount. While most undergraduates are recent high school graduates preparing for career objectives, many others are older individuals, including veterans and homemakers, who either never before had the opportunity for a college education or whose schooling was interrupted.

Most students are residents of Pennsylvania but students from other states and foreign countries are welcome. The student body at West Chester University represents a cross section of many ethnic, racial, and religious groups and includes students from all socioeconomic levels.

Like the world around it, West Chester University is constantly transforming. The school continues to broaden and modify the nature and number of its programs to reflect the needs of its students in their endeavor to prepare themselves for success and fulfillment in life.



# The History of West Chester University of Pennsylvania

Founded in 1871, West Chester University began as West Chester Academy, a private, state-aided school that existed from 1812 to 1869. The academy enjoyed strong support from the highly intellectual Chester County Cabinet of the Natural Sciences of the pre-Civil War decades. It was recognized as one of Pennsylvania's leading preparatory schools, and its experience in teacher training laid the groundwork for the normal school years that were to follow.

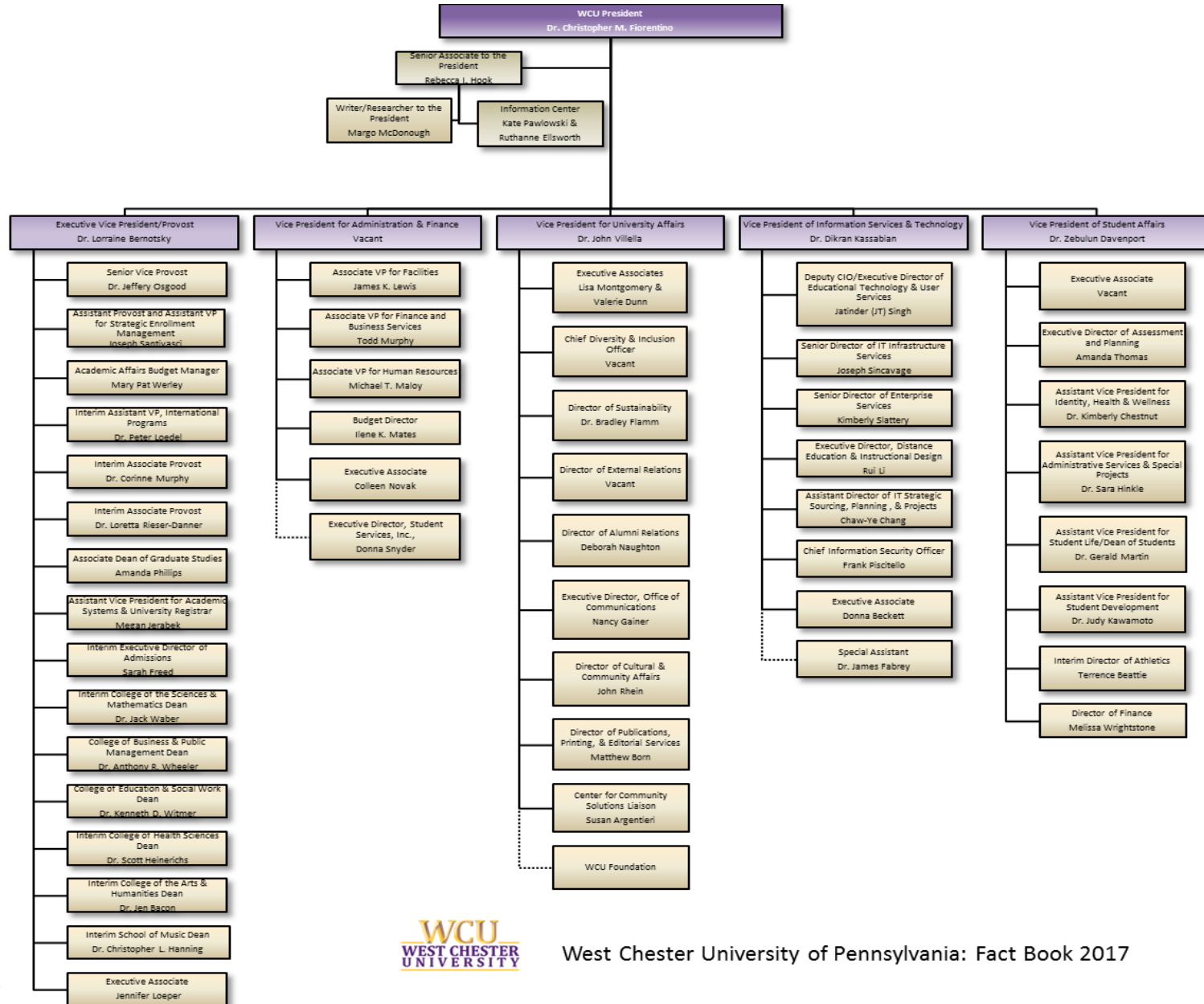
As the state began to take increasing responsibility for public education, the academy was transformed into West Chester Normal School, still privately owned but state certified. The normal school admitted its first class, consisting of 160 students, on September 25, 1871. In 1913, West Chester became the first of the normal schools to be owned outright by the Commonwealth.

West Chester became West Chester State Teachers College in 1927 when Pennsylvania initiated a four-year program of teacher education. In 1960, as the Commonwealth paved the way for liberal arts programs in its college system, West Chester was renamed West Chester State College, and two years later introduced the liberal arts program that turned the one-time academy into a comprehensive college.

In recognition of the historic merit of the campus, in 1981 the West Chester State College Quadrangle Historic District was placed on the National Register of Historic Places. The buildings included in this historic district are Philips Memorial Building, Ruby Jones Hall, Recitation Hall, and the Old Library. Except for Philips, these buildings are all constructed of native Chester County serpentine stone.

West Chester State achieved another major milestone with passage of the State System of Higher Education bill. West Chester became one of the 14 universities in the State System of Higher Education on July 1, 1983. Along with its new name -- West Chester University of Pennsylvania of the State System of Higher Education -- the institution acquired a new system of governance and the opportunity to expand its degree programs.

# Organizational Chart



West Chester University of Pennsylvania: Fact Book 2017



# **ADMISSIONS**

## **Undergraduate Admissions Standards**

West Chester University prides itself on the holistic approach used in evaluating applicant credentials. Each application is reviewed individually, and we carefully consider scholastic performance and academic preparation to determine an individual's potential for success.

For general admission, as a first-year student, the Office of Admissions requires successful completion of a college preparatory curriculum in high school. Honors and AP level courses are preferred. Minimum requirements also include a grade point average of 3.4 or better, a minimum combined SAT score of 1120 or better, and rank in the top 40% of the class. It is important to realize that these factors are guidelines for consideration. The academic profile of the first year students who enrolled at West Chester University is a mean SAT combined score of 1128 (scores used for Admission Decision), a rank in the 61st percentile or top 39%, and a grade point average of 3.42.

Applicants who do not meet regular admissions standards may be considered for a special admissions program if appropriate or denied admission and counseled to enroll at another college or university for a minimum of 24 credits before reapplying as a transfer student.

Transfer applicants must have a minimum grade point average of 2.00 for admissions consideration. The majority of our transfers have a Cumulative GPA of 2.50 or better prior to transferring to the University. Some of our academic programs require a higher grade point average and specific course prerequisites. Pennsylvania Community College students who have earned an Associate of Arts or Associate of Science degree and students who have completed 12 or more transferable credits from a State System University with a 2.00 or above have an Academic Passport that provides entry into any university in the State System of Higher Education. For more information on admissions requirements and the Academic Passport, please contact the Office Admissions at (610) 436-3411 or e-mail [ugadmiss@wcupa.edu](mailto:ugadmiss@wcupa.edu)

## Admission Application Statistics for First Time, First Year Students Fall 2017

Race/Ethnicity	Fall 2016			Fall 2017			Total	
	Male	Female	Total	Male	Female	Total	Change	% Change
<b>African American</b>								
Applied	586	1,020	1,606	600	1,036	1,636	30	1.87%
Accepted	264	499	763	302	495	797	34	4.46%
Enrolled	94	171	265	102	141	243	-22	-8.30%
<b>Asian</b>								
Applied	153	295	448	154	277	431	-17	-3.79%
Accepted	91	193	284	108	179	287	3	1.06%
Enrolled	15	38	53	24	40	64	11	20.75%
<b>White</b>								
Applied	3,276	5,727	9,003	3,260	5,790	9,050	47	0.52%
Accepted	2,290	3,896	6,186	2,428	4,150	6,578	392	6.34%
Enrolled	723	1,129	1,852	793	1,226	2,019	167	9.02%
<b>Hawaiian/Pacific Islander</b>								
Applied	6	4	10	2	7	9	-1	-10.00%
Accepted	2	2	4	2	2	4	0	0.00%
Enrolled	1	1	2	2	0	2	0	0.00%
<b>Hispanic or Latino</b>								
Applied	280	585	865	319	610	929	64	7.40%
Accepted	154	324	478	194	393	587	109	22.80%
Enrolled	57	91	148	60	99	159	11	7.43%
<b>Multiracial</b>								
Applied	160	296	456	140	245	385	-71	-15.57%
Accepted	98	189	287	98	173	271	-16	-5.57%
Enrolled	43	54	97	40	55	95	-2	-2.06%
<b>Native American</b>								
Applied	8	16	24	11	15	26	2	8.33%
Accepted	1	5	6	4	5	9	3	50.00%
Enrolled	0	0	0	0	3	3	3	-

to be continued.....

These headcounts are unduplicated and reflect the IPEDS unduplicated headcount.

### Admission Application Statistics for First Time, First Year Students: Fall 2017 (continued)

Race/Ethnicity	Fall 2016			Fall 2017			Total	
	Male	Female	Total	Male	Female	Total	Change	%Change
<b>Non-Resident Alien</b>								
Applied	16	20	36	9	15	24	-12	-33.33%
Accepted	6	9	15	5	13	18	3	20.00%
Enrolled	1	4	5	1	6	7	2	40.00%
<b>Not Supplied</b>								
Applied	59	97	156	71	106	177	21	13.46%
Accepted	46	58	104	51	75	126	22	21.15%
Enrolled	15	17	32	14	24	38	6	18.75%
<b>Total</b>								
Applied	<b>4,544</b>	<b>8,060</b>	<b>12,604</b>	<b>4,566</b>	<b>8,101</b>	<b>12,667</b>	63	0.50%
Accepted	<b>2,952</b>	<b>5,175</b>	<b>8,127</b>	<b>3,192</b>	<b>5,485</b>	<b>8,677</b>	550	6.77%
Enrolled	<b>949</b>	<b>1,505</b>	<b>2,454</b>	<b>1,036</b>	<b>1,594</b>	<b>2,630</b>	176	7.17%

These headcounts are unduplicated and reflect the IPEDS unduplicated headcount.

## First Time, Full Time, First Year Enrolled Students by Gender and Race/Ethnicity: Fall 2017

Race/Ethnicity	Fall 2016			Fall 2017			Total	
	Male	Female	Total	Male	Female	Total	Change	% Change
African American	93	170	263	101	141	242	-21	-7.98%
Asian	15	38	53	23	40	63	10	18.87%
White	720	1,123	1,843	791	1,223	2,014	171	9.28%
Hawaiian/Pacific Islander	1	1	2	2	0	2	0	0.00%
Hispanic or Latino	57	90	147	59	98	157	10	6.80%
Multiracial	43	54	97	40	54	94	-3	-3.09%
Native American	0	0	0	0	3	3	3	-
Non-Resident Alien	1	4	5	1	6	7	2	40.00%
Not Supplied	14	17	31	14	24	38	7	22.58%
<b>Total</b>	<b>944</b>	<b>1,497</b>	<b>2,441</b>	<b>1,031</b>	<b>1,589</b>	<b>2,620</b>	<b>179</b>	<b>7.33%</b>

These headcounts are unduplicated and reflect the IPEDS unduplicated headcount.

### First Time, Full Time, First Year Students by Admission Type

Admittance Type	2013		2014		2015		2016		2017	
	N	%	N	%	N	%	N	%	N	%
Regular	1,893	82.6%	1,968	84.0%	1,996	83.8%	1,961	80.3%	2,102	80.2%
ADP ACT 101	73	3.2%	68	2.9%	75	3.1%	69	2.8%	64	2.40%
ADP Non-ACT 101	108	4.7%	112	4.8%	106	4.5%	123	5.0%	116	4.44%
Special Admission	218	9.5%	196	8.4%	204	8.6%	288	11.8%	338	12.9%
<b>Total</b>	<b>2,292</b>		<b>2,344</b>		<b>2,381</b>		<b>2,441</b>		<b>2,620</b>	

These headcounts are unduplicated and reflect the IPEDS unduplicated headcount.



## SAT Score Distribution: First Time, First Year Students Fall 2017

### SAT- Critical Reading and Writing Distribution

Score	2013		2014		2015		2016		2017	
	N	%	N	%	N	%	N	%	N	%
700-800	84	3.7%	60	2.9%	70	3.3%	60	2.8%	56	2.5%
600-699	963	41.9%	828	39.9%	823	39.3%	725	34.2%	649	28.9%
500-599	1,037	45.2%	1,002	48.3%	974	46.5%	1,083	51.1%	1,290	57.4%
400-499	208	9.1%	171	8.2%	218	10.4%	241	11.4%	239	10.6%
300-399	4	0.2%	14	0.7%	11	0.5%	10	0.5%	12	0.5%
200-299	0	0.0%	0	0.0%	0	0.0%	0	0.0%	0	0.0%
<b>Total</b>	<b>2,296</b>	<b>100%</b>	<b>2,075</b>	<b>100%</b>	<b>2,096</b>	<b>100%</b>	<b>2,119</b>	<b>100%</b>	<b>2,246</b>	<b>100%</b>

### SAT- Mathematics Distribution

Score	2013		2014		2015		2016		2017	
	N	%	N	%	N	%	N	%	N	%
700-800	95	4.1%	73	3.5%	74	3.5%	55	2.6%	47	2.1%
600-699	672	29.3%	548	26.4%	523	25.0%	481	22.7%	551	24.5%
500-599	1,306	56.9%	1,235	59.5%	1,249	59.6%	1,296	61.2%	1,306	58.1%
400-499	202	8.8%	192	9.3%	223	10.6%	265	12.5%	332	14.8%
300-399	21	0.9%	27	1.3%	27	1.3%	22	1.04%	10	0.45%
200-299	0	0.0%	0	0.0%	0	0.0%	0	0.0%	0	0.0%
<b>Total</b>	<b>2,296</b>	<b>100%</b>	<b>2,075</b>	<b>100%</b>	<b>2,096</b>	<b>100%</b>	<b>2,119</b>	<b>100%</b>	<b>2,246</b>	<b>100%</b>

Fall 2013 through Fall 2016 old SAT scores have been converted to new SAT scores.

If student supplied old SAT scores in Fall 2017, scores were converted to new SAT scores.

Fall 2013 includes ACT scores which were used for admission decision. ACT Scores were converted to new SAT scores.

These headcounts are unduplicated and reflect the IPEDS unduplicated headcount.

## SAT Score Distribution: First Time, First Year Students Fall 2017 (continued)

### SAT Average Scores - Old SAT Scale

	Critical Reading			Mathematics			Writing			Combined**		
	WCU	PA	US	WCU	PA	US	WCU	PA	US	WCU	PA	US
Fall 2013	534	494	496	545	504	514	528	482	488	1,079	998	1,010
Fall 2014*	532	497	497	542	504	513	524	480	487	1,074	1001	1,010
Fall 2015*	530	499	495	536	504	511	520	482	484	1,067	1,003	1,006
Fall 2016*	525	500	494	529	506	508	512	481	482	1,054	1,006	1,002

\*Includes only scores used for admission decision.

\*\*Combined Critical Reading and Mathematics scores.

Scores above use the old SAT scale.

### SAT Average Scores - New SAT Scale

	Critical Reading and Writing			Mathematics			Combined**		
	WCU	PA	US	WCU	PA	US	WCU	PA	US
Fall 2017*	567	540	533	556	531	527	1,122	1,071	1,060

\*Includes only scores used for admission decision.

\*\*Combined Critical Reading and Mathematics scores.

Fall 2017 scores above have been converted to new SAT scores.

### SAT Average Scores - New SAT Scale

	Critical Reading and Writing	Mathematics	Combined**
	WCU	WCU	WCU
Fall 2013	586	571	1,157
Fall 2014*	584	569	1,152
Fall 2015*	580	564	1,144
Fall 2016*	573	557	1,131
Fall 2017*	567	556	1,122

\*Includes only scores used for admission decision.

\*\*Combined Critical Reading and Mathematics scores.

All SAT averages in the chart above have been converted to new SAT scores.

## ACT Score Distribution: First Time, First Year Students Fall 2017

### ACT- English Distribution

Score	2016		2017	
	N	%	N	%
1-10	0	0.0%	0	0.0%
11-20	84	25.61%	86	23.12%
21-30	229	69.82%	260	69.89%
31-36	15	4.57%	26	6.99%
<b>Total</b>	<b>328</b>	<b>100%</b>	<b>372</b>	<b>100%</b>

### ACT- Math Distribution

Score	2016		2017	
	N	%	N	%
1-10	0	0.0%	0	0.0%
11-20	97	29.57%	123	33.06%
21-30	223	67.99%	243	65.32%
31-36	8	2.44%	6	1.61%
<b>Total</b>	<b>328</b>	<b>100%</b>	<b>372</b>	<b>100%</b>

### ACT- Reading Distribution

Score	2016		2017	
	N	%	N	%
1-10	0	0.0%	0	0.0%
11-20	72	22.0%	56	15.1%
21-30	208	63.4%	254	68.3%
31-36	48	14.6%	62	16.7%
<b>Total</b>	<b>328</b>	<b>100%</b>	<b>372</b>	<b>100%</b>

### ACT- Science Distribution

Score	2016		2017	
	N	%	N	%
1-10	0	0.0%	0	0.0%
11-20	71	21.6%	61	16.4%
21-30	243	74.1%	297	79.8%
31-36	14	4.3%	14	3.8%
<b>Total</b>	<b>328</b>	<b>100%</b>	<b>372</b>	<b>100%</b>

Starting Fall 2015, ACT scores are used for admission decision.

Above tables display only scores used for admission decision.

These headcounts are unduplicated and reflect the IPEDS unduplicated headcount.

## ACT Score Distribution: First Time, First Year Students Fall 2017 (continued)

### ACT- Composite Distribution

Score	2016		2017	
	N	%	N	%
1-10	0	0.0%	0	0.0%
11-20	69	21.0%	63	16.9%
21-30	251	76.5%	298	80.1%
31-36	8	2.4%	11	3.0%
<b>Total</b>	<b>328</b>	<b>100%</b>	<b>372</b>	<b>100%</b>

### ACT Average Scores

	English			Math			Reading		
	WCU	PA	US	WCU	PA	US	WCU	PA	US
Fall 2015	23.1	22.5	20.4	22.6	22.8	20.8	24.3	23.2	21.4
Fall 2016	22.9	22.6	20.1	22.6	23.0	20.6	24.3	23.6	21.3
Fall 2017	23.4	23.4	20.3	22.5	23.4	20.7	25.2	24.2	21.4

	Science			Composite		
	WCU	PA	US	WCU	PA	US
Fall 2015	23.1	22.5	20.9	23.3	22.9	21.0
Fall 2016	23.3	22.8	20.8	23.3	23.1	20.8
Fall 2017	23.6	23.3	21.0	23.6	23.7	21.0

Starting Fall 2015, ACT scores are used for admission decision.

Above tables display only scores used for admission decision.

These headcounts are unduplicated and reflect the IPEDS unduplicated headcount.

## Feeder High Schools: Fall 2017

### Pennsylvania High Schools With the Most Number of Entering First Year Students

<i>School</i>	<i>#</i>
Downingtown High School East	45
West Chester East High School	42
Central Bucks High Sch South	40
Coatesville Area Senior High School	39
Garnet Valley High School	34
Spring-Ford Senior High School	34
West Chester Bayard Rustin High School	32
Downingtown West	30
Springfield High School	29
Souderton Area High School	28
Archbishop Wood High School	27
Council Rock High School South	26
Penncrest High School	26
Pennsbury High School	26
Bishop Shanahan High School	25
Abington High School	24
Haverford High School	24
North Penn High School	24
Conestoga High School	23
Kennett High School	23
Unionville High School	23
Avon Grove High School	22
B Reed Henderson High School	22
Marple Newtown High School	21

<i>School</i>	<i>#</i>
Neshaminy High School	21
Twin Valley High School	21
Boyertown Area Senior High School	20
Central Bucks High School East	20
Owen J Roberts High School	20
Perkiomen Valley High School	20
Central Bucks High School West	19
Easton Area High School	19
Great Valley High School	19
Ridley High School	19
Archbishop Ryan High School	18
Cardinal O'Hara High School	18
Chichester High School	18
Parkland High School	18
Upper Darby High School	18
Archbishop Carroll High School	17
Exeter Township Senior High School	17
Pennridge High School	17
Upper Merion Area High School	17
Methacton High School	16
Cumberland Valley High School	15
Upper Dublin High School	15
Council Rock High School North	14
Salesianum School	14

<i>School</i>	<i>#</i>
Southern Lehigh High School	14
Fleetwood Area High School	13
Hunterdon Central Regional High School	13
Notre Dame High School	13
Plymouth-Whitemarsh High School	13
Sun Valley High School	13
Governor Miffling School District	12
Monsignor Bonner-Archb Pren High School	12
Phoenixville Area High School	12
Radnor High School	12
Strath Haven High School	12
Bensalem High School	11
Central High School	11
Conestoga Valley Senior High School	11
Daniel Boone Area High School	11
Delaware Valley High School	11
Octorara Area High School	11
Pope John Paul II High School	11
Shawnee High School	11
Upper Moreland High School	11
Bishop McDevitt High School	10
Central Dauphin High School	10
Cheltenham High School	10
Emmaus High School	10

These headcounts are unduplicated and reflect the IPEDS unduplicated headcount.

## Feeder Colleges: Fall 2017

### Institutions Previously Attended With the Most Number of New Fall Undergraduate Transfer Students

[Excludes students who transitioned from non-degree to degree as well as Transfers with first degree at WCU]

Name	Count	Percent	Type	State
Delaware County Community College	359	27.5%	2 Year Public	PA
Montgomery County Community College	158	12.1%	2 Year Public	PA
Community College of Philadelphia	83	6.4%	2 Year Public	PA
Bucks County Community College	81	6.2%	2 Year Public	PA
Pennsylvania St Univ. University Park	38	2.9%	2 Year Public	PA
Temple University	28	2.1%	4 Year Public	PA
Harrisburg Area Community College	27	2.1%	4 Year Public	PA
Northampton County Area Community College	26	2.0%	4 Year Public	PA
Kutztown University	20	1.5%	4 Year Public	PA
Bloomsburg University of Pennsylvania	19	1.5%	4 Year Public	PA
Millersville University of Pennsylvania	19	1.5%	2 Year Public	PA
Shippensburg University	17	1.3%	2 Year Public	PA
All Military	13	1.0%	2 Year Public	--
California University of Pennsylvania	12	0.9%	4 Year Public	PA
East Stroudsburg University of Pennsylvania	12	0.9%	4 Year Public	PA
Lehigh Carbon Community College	11	0.8%	4 Year Public	PA
Indiana University of Pennsylvania	9	0.7%	4 Year Public	PA
Eastern University	8	0.6%	4 Year Private	PA
Widener University	8	0.6%	4 Year Public	PA
University of Pittsburgh	7	0.5%	4 Year Private	PA
York College of PA	7	0.5%	4 Year Private	PA
Brookdale Community College	6	0.5%	2 Year Public	NJ
Gwynedd-Mercy College	6	0.5%	4 Year Private	PA
Lock Haven University of Pennsylvania	6	0.5%	2 Year Public	PA
Reading Area Community College	6	0.5%	4 Year Public	PA
West Virginia University Morgantown	6	0.5%	4 Year Public	WV
Cabrini University	5	0.4%	4 Year Private	PA
Community College Air Force	5	0.4%	2 Year Public	PA
Holy Family University	5	0.4%	4 Year Private	PA
Messiah College	5	0.4%	4 Year Private	PA
Neumann University	5	0.4%	4 Year Private	PA
Philadelphia University	5	0.4%	4 Year Private	PA
Roxborough Memorial Hospital	5	0.4%	16 Month Private	PA
Saint Joseph's University	5	0.4%	4 Year Private	PA
Towson University	5	0.4%	4 Year Private	MD
University North Dakota Grand Forks	5	0.4%	4 Year Public	ND
Alvernia University	4	0.3%	4 Year Private	PA
Cecil Community College	4	0.3%	4 Year Private	MD
Immaculata University	4	0.3%	4 Year Private	PA
Lackawanna College	4	0.3%	2 Year Public	PA
Mansfield University of Pennsylvania	4	0.3%	4 Year Private	PA
Rowan College at Gloucester County	4	0.3%	2 Year Public	NJ
University of Scranton	4	0.3%	4 Year Private	PA
Ursinus College	4	0.3%	4 Year Private	PA
West Chester University of Pennsylvania	4	0.3%	4 Year Public	PA
Delaware Valley College Sci Agric	3	0.2%	2 Year Public	PA
Desales University	3	0.2%	4 Year Private	PA
Drexel University	3	0.2%	4 Year Private	PA
Gettysburg College	3	0.2%	4 Year Private	PA
James Madison University	3	0.2%	4 Year Private	VA
Lincoln University Commonwealth Pennsylvania	3	0.2%	4 Year Public	PA
Moravian College	3	0.2%	4 Year Private	PA

These headcounts are unduplicated and reflect the IPEDS unduplicated headcount.

## First Time, Full Time, First Year Student Enrollment by Pennsylvania County: Fall 2017

### Top 10 Counties\* with Most Enrollments Ranked

County	Total	Percent	Rank
Adams	12	0.46%	
Allegheny	8	0.30%	
Armstrong	0	0.00%	
Beaver	1	0.04%	
Bedford	0	0.00%	
Berks	93	3.54%	6
Blair	0	0.00%	
Bradford	6	0.23%	
Bucks	278	10.57%	4
Butler	2	0.08%	
Cambria	0	0.00%	
Cameron	0	0.00%	
Carbon	2	0.08%	
Centre	1	0.04%	
Chester	458	17.41%	1
Clarion	1	0.04%	
Clearfield	0	0.00%	
Clinton	1	0.04%	
Columbia	6	0.23%	
Crawford	0	0.00%	
Cumberland	48	1.83%	
Dauphin	46	1.75%	
Delaware	319	12.13%	3

County	Total	Percent	Rank
Elk	0	0.00%	
Erie	0	0.00%	
Fayette	0	0.00%	
Franklin	5	0.21%	
Fulton	0	0.00%	
Greene	0	0.00%	
Huntingdon	0	0.00%	
Indiana	1	0.04%	
Jefferson	0	0.00%	
Juniata	0	0.00%	
Lackawanna	55	2.33%	
Lancaster	69	2.92%	7
Lawrence	1	0.04%	
Lebanon	9	0.38%	
Lehigh	68	2.88%	8
Luzern	19	0.81%	
Lycoming	8	0.34%	
McKean	1	0.04%	
Mercer	1	0.04%	
Mifflin	1	0.04%	
Monroe	30	1.27%	
Montgomery	330	13.98%	2
Montour	0	0.00%	

County	Total	Percent	Rank
Northampton	66	2.51%	10
Northumberland	6	0.23%	
Perry	2	0.08%	
Philadelphia	190	7.22%	5
Pike	15	0.57%	
Potter	0	0.00%	
Schuylkill	12	0.46%	
Snyder	2	0.08%	
Somerset	0	0.00%	
Sullivan	1	0.04%	
Susquehanna	2	0.08%	
Tioga	0	0.00%	
Union	2	0.08%	
Venango	0	0.00%	
Warren	0	0.00%	
Washington	0	0.00%	
Wayne	10	0.38%	
Westmoreland	4	0.15%	
Wyoming	2	0.08%	
York	71	2.70%	9
Out of State	358	13.61%	
Out of Country	7	0.27%	
<b>Total</b>	<b>2,630</b>	<b>100.00%</b>	

\*County at the time of admission.

These headcounts are unduplicated and reflect the IPEDS unduplicated headcount.

## First Time, Full Time, First Year Student Enrollment by State: Fall 2017

### Top 10 States\* with Most Enrollments Ranked

State	Total	Percent	Rank
Alabama	0	0.00%	
Alaska	0	0.00%	
Arizona	0	0.00%	
Arkansas	0	0.00%	
California	0	0.00%	
Colorado	1	0.04%	9(t)
Connecticut	1	0.04%	
Delaware	30	1.14%	3
District of Columbia	0	0.00%	
Florida	6	0.23%	6
Georgia	2	0.08%	8(t)
Hawaii	0	0.00%	
Idaho	0	0.00%	
Illinois	1	0.04%	9(t)
Indiana	0	0.00%	
Iowa	0	0.00%	
Kansas	0	0.00%	
Kentucky	1	0.04%	9(t)
Louisiana	0	0.00%	
Maine	0	0.00%	
Maryland	12	0.46%	4
Massachusetts	1	0.04%	9(t)
Michigan	0	0.00%	
Minnesota	0	0.00%	
Mississippi	0	0.00%	
Missouri	0	0.00%	
Montana	1	0.04%	9(t)

State	Total	Percent	Rank
Nebraska	0	0.00%	
Nevada	0	0.00%	
New Hampshire	0	0.00%	
New Jersey	287	10.91%	2
New Mexico	0	0.00%	
New York	9	0.34%	5
North Carolina	0	0.00%	
North Dakota	0	0.00%	
Ohio	2	0.08%	8(t)
Oklahoma	0	0.00%	
Oregon	0	0.00%	
Pennsylvania	2,265	86.12%	1
Rhode Island	0	0.00%	
South Carolina	1	0.04%	9(t)
South Dakota	0	0.00%	
Tennessee	0	0.00%	
Texas	0	0.00%	
Utah	0	0.00%	
Vermont	0	0.00%	
Virginia	3	0.11%	7
Washington	0	0.00%	
West Virginia	0	0.00%	
Wisconsin	0	0.00%	
Wyoming	0	0.00%	
Armed Forces	0	0.00%	
International	7	0.27%	
<b>Total</b>	<b>2,630</b>	<b>100.00%</b>	

\*State at the time of admission.

These headcounts are unduplicated and reflect the IPEDS unduplicated headcount.



## Admission Yield Statistics

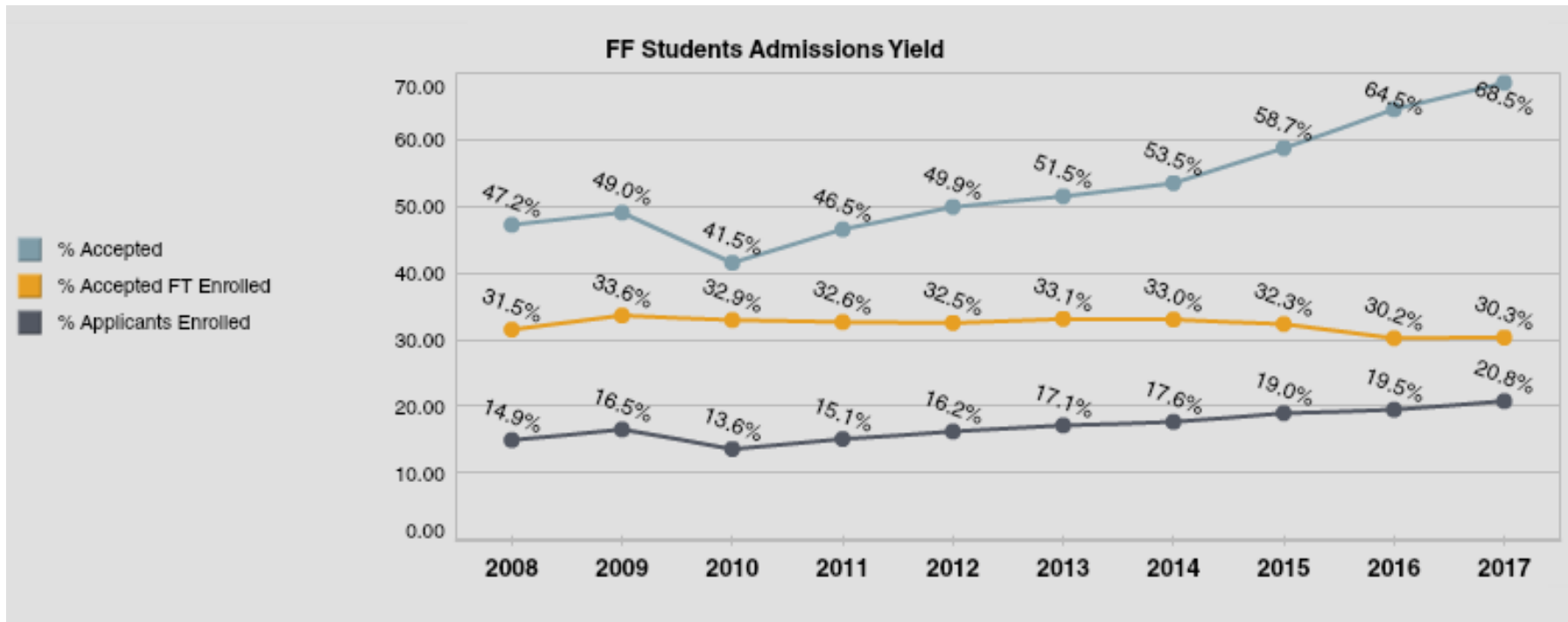
### First-Time, First Year Student Admission Yield

Year	# of Applicants	# Accepted	% Accepted	# Enrolled	% Accepted Full-Time	% of Applicants
2008	11,181	6,317	47.2	2,002	31.5	14.9
2009	11,534	6,667	49.0	2,248	33.6	16.5
2010	14,009	6,267	41.5	2,067	32.9	13.6
2011	14,097	7,013	46.5	2,292	32.6	15.1
2012	13,365	7,161	49.9	2,334	32.5	16.2
2013	13,438	6,922	51.5	2,298	33.1	17.1
2014*	13,291	7,108	53.5	2,351	33.0	17.6
2015*	12,624	7,408	58.7	2,395	32.3	19.0
2016*	12,604	8,127	64.5	2,454	30.2	19.5
2017*	12,667	8,677	68.5	2,630	30.3	20.8
<b>5-YR Change</b>	<b>-5.2%</b>	<b>21.2%</b>		<b>12.7%</b>		
<b>1-YR Change</b>	<b>0.5%</b>	<b>6.8%</b>		<b>7.2%</b>		
<b>5-YR Difference</b>			<b>18.60</b>		<b>-2.20</b>	<b>4.60</b>
<b>1-YR Difference</b>			<b>4.02</b>		<b>0.10</b>	<b>1.33</b>

\*Starting Fall 2014, number of applicants includes completed applications only.

These headcounts are unduplicated and reflect the IPEDS unduplicated headcount.

## First Time, First Year Admission Yield



Starting Fall 2014, number of applicants includes completed applications only.

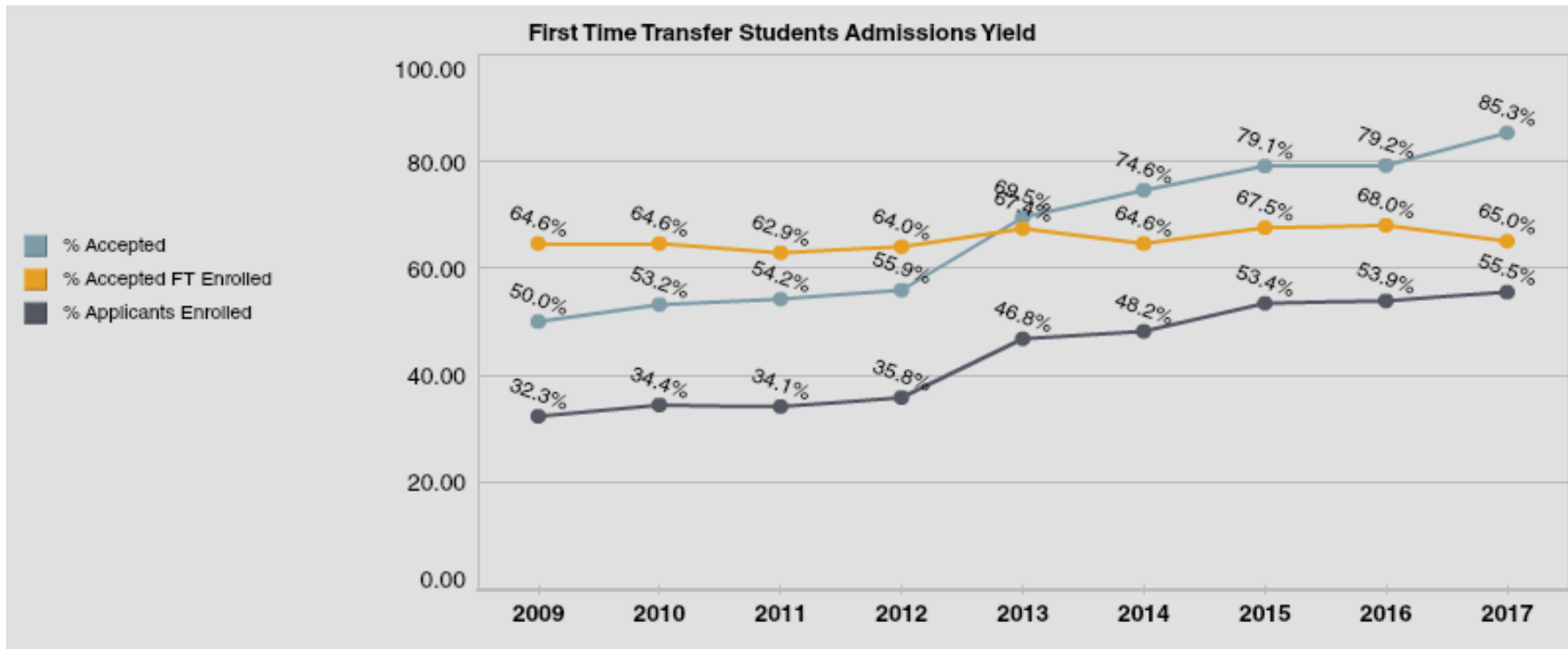
## First Time Transfer Admission Yield

Year	# of Applicants	# Accepted	% Accepted	# Enrolled	% of Accepted Enrolled	% of Applicants Enrolled
2009	3,639	1,821	50.0	1,176	64.6	32.3
2010	3,607	1,920	53.2	1,241	64.6	34.4
2011	3,742	2,029	54.2	1,276	62.9	34.1
2012	3,678	2,057	55.9	1,316	64	35.8
2013	2,883	2,003	69.5	1,350	67.9	46.8
2014*	2,762	2,061	74.6	1,331	64.6	48.2
2015*	2,649	2,095	79.1	1,415	67.5	53.4
2016*	2,703	2,142	79.2	1,457	68.0	53.9
2017*	2,400	2,048	85.3	1,332	65.0	55.5
<b>5-YR Change</b>	<b>-34.7%</b>	<b>-0.4%</b>		<b>1.2%</b>		
<b>1-YR Change</b>	<b>2.0%</b>	<b>-4.4%</b>		<b>-8.6%</b>		
<b>5-YR Difference</b>			<b>29.43</b>		<b>1.04</b>	<b>19.70</b>
<b>1-YR Difference</b>			<b>6.09</b>		<b>-2.98</b>	<b>1.60</b>

\*Starting Fall 2014, number of applicants includes completed applications only.

These headcounts are unduplicated and reflect the IPEDS unduplicated headcount.

## First Time Transfer Admission Yield



Starting Fall 2014, number of applicants includes completed applications only.



# **ENROLLMENT**

## Head Count Enrollment by Gender and Race/Ethnicity: Fall 2017

Gender	Undergraduate		Graduate		Total*
	Full-Time	Part-time	Full-Time	Part-time	
Male	5,278	658	277	652	6,865
Female	7,742	773	697	1,229	10,441
<b>Total</b>	13,020	1,431	974	1,881	17,306

Ethnicity	Undergraduate		Graduate		Total*
	Full-Time	Part-time	Full-Time	Part-time	
African American	1,386	244	179	207	2,016
Native American	13	4	0	0	17
Asian	295	62	32	50	439
Caucasian	9,953	961	652	1,504	13,070
Hawaiian/Pacific Islander	11	3	0	0	14
Hispanic	747	84	38	65	934
Non-Resident Alien	61	2	42	14	119
Multiracial	444	41	28	25	538
Not Supplied	110	30	3	16	159
<b>Total</b>	13,020	1,431	974	1,881	17,306

These headcounts are unduplicated and reflect the IPEDS unduplicated headcount.

## Head Count Enrollment by Degree Status and College: Fall 2017

Degree Status	Undergraduate		Graduate		Total*
	Full-Time	Part-time	Full-Time	Part-time	
Degree Seeking	11,666	1,162	931	1,603	16,990
Non-degree Seeking	1,354	269	43	278	316
<b>Total</b>	<b>13,020</b>	<b>1,431</b>	<b>974</b>	<b>1,881</b>	<b>17,306</b>

College	Undergraduate		Graduate		Total*
	Full-Time	Part-time	Full-Time	Part-time	
Arts & Humanities	1,400	116	62	138	1,716
Business and Public Management	3,634	288	146	608	4,676
Education & Social Work	1,170	104	394	615	2,283
Health Sciences	2,235	313	242	223	3,013
Science & Mathematics	2,679	262	104	170	3,215
Interdisciplinary & Graduate Studies	1,584	331	4	95	2,014
School of Music	318	17	22	32	389
<b>Total</b>	<b>13,020</b>	<b>1,431</b>	<b>974</b>	<b>1,881</b>	<b>17,306</b>

These headcounts are unduplicated and reflect IPEDS unduplicated headcount.

Interdisciplinary & Graduate Studies include non-degree and undeclared major students.

## Enrollment by State at the Time of Admission: Fall 2014 to Fall 2017

State	Fall 2014			Fall 2015			Fall 2016			Fall 2017		
	UG	G	Total	UG	G	Total	UG	G	Total	UG	G	Total
Alabama	0	0	0	0	0	0	1	1	2	1	1	2
Alaska	1	0	1	1	0	1	1	0	1	1	0	1
Arizona	0	1	1	1	1	2	1	1	2	1	1	2
Arkansas	0	1	1	0	0	0	0	0	0	0	0	0
California	9	4	13	9	4	13	9	8	17	7	11	18
Colorado	0	1	1	0	0	0	0	0	0	1	0	1
Connecticut	15	0	15	6	1	7	6	1	7	6	4	10
Delaware	152	50	202	170	44	214	168	47	215	162	61	223
Florida	7	1	8	4	3	7	6	4	10	11	10	21
Georgia	2	0	2	1	0	1	0	1	1	2	5	7
Hawaii	2	0	2	2	0	2	2	0	2	1	0	1
Idaho	0	1	1	0	1	1	0	0	0	0	0	0
Illinois	0	0	0	0	0	0	0	1	1	1	3	4
Indiana	0	0	0	0	1	1	0	0	0	0	1	1
Iowa	1	1	2	2	0	2	1	0	1	0	0	0
Kansas	0	0	0	0	0	0	0	0	0	0	1	1
Kentucky	0	0	0	0	1	1	0	2	2	1	1	2
Louisiana	0	1	1	1	1	2	1	0	1	1	0	1
Maine	1	1	2	1	1	2	1	1	2	1	1	2
Maryland	80	13	93	81	14	95	87	20	107	80	29	109
Massachusetts	4	5	9	4	4	8	4	2	6	4	4	8
Michigan	4	1	5	4	0	4	3	1	4	2	0	2
Minnesota	1	0	1	1	1	2	0	3	3	0	3	3
Missouri	0	1	1	0	0	0	0	1	1	0	1	1
Montana	0	0	0	0	0	0	0	1	1	1	1	2
Nevada	1	0	1	1	1	2	1	0	1	1	0	1
New Hampshire	2	1	3	2	1	3	2	0	2	2	0	2
New Jersey	1,343	61	1,404	1,355	60	1,415	1,273	74	1,347	1,188	91	1,279
New Mexico	0	0	0	1	0	1	1	1	2	0	0	0
New York	60	8	68	59	9	68	60	14	74	55	18	73
North Carolina	4	4	8	3	5	8	1	7	8	2	5	7
North Dakota	0	0	0	1	0	1	1	0	1	1	0	1

to be continued.....

These headcounts are unduplicated and reflect the IPEDS unduplicated headcount.



## Enrollment by State at the Time of Admission: Fall 2014 to Fall 2017 (continued)

STATE	Fall 2014			Fall 2015			Fall 2016			Fall 2017		
	UG	G	Total	UG	G	Total	UG	G	Total	UG	G	Total
Ohio	1	2	3	1	0	1	2	6	8	4	7	11
Oklahoma	0	0	0	0	0	0	0	0	0	0	1	1
Oregon	1	1	2	0	1	1	0	0	0	0	0	0
Pennsylvania	12,071	1,974	14,045	12,409	2,137	14,546	12,686	2,348	15,034	12,841	2,528	15,369
Rhode Island	0	1	1	1	0	1	1	0	1	2	1	3
South Carolina	2	1	3	1	1	2	2	2	4	4	3	7
Tennessee	1	0	1	0	0	0	0	0	0	0	2	2
Texas	2	0	2	3	2	5	4	9	13	2	10	12
Utah	0	0	0	0	0	0	0	1	1	0	2	2
Vermont	0	0	0	0	0	0	1	0	1	1	1	2
Virginia	16	5	21	16	8	24	16	9	25	15	10	25
Washington	0	0	0	0	0	0	0	2	2	0	1	1
Washington D.C.	1	2	3	1	2	3	1	1	2	1	2	3
West Virginia	1	0	1	1	0	1	1	0	1	1	2	3
Wisconsin	1	2	3	0	2	2	1	1	2	1	4	5
Armed Forces	1	0	1	0	0	0	0	1	1	0	3	3
International	57	97	154	69	79	148	52	37	89	45	26	71
Other/Unknown	0	1	1	0	0	0	0	0	0	1	0	1
<b>TOTAL</b>	<b>13,844</b>	<b>2,242</b>	<b>16,086</b>	<b>14,212</b>	<b>2,385</b>	<b>16,597</b>	<b>14,397</b>	<b>2,608</b>	<b>17,005</b>	<b>14,451</b>	<b>2,855</b>	<b>17,306</b>
<b>In-State</b>	<b>12,071</b>	<b>1,974</b>	<b>14,045</b>	<b>12,409</b>	<b>2,137</b>	<b>14,546</b>	<b>12,686</b>	<b>2,348</b>	<b>15,034</b>	<b>12,841</b>	<b>2,528</b>	<b>15,369</b>
<b>Out-of-State</b>	<b>1,773</b>	<b>268</b>	<b>2,041</b>	<b>1,803</b>	<b>248</b>	<b>2,051</b>	<b>1,711</b>	<b>260</b>	<b>1,971</b>	<b>1,610</b>	<b>327</b>	<b>1,937</b>
<b>Out-of-State %</b>	<b>12.81%</b>	<b>11.95%</b>	<b>12.69%</b>	<b>12.69%</b>	<b>10.40%</b>	<b>12.36%</b>	<b>11.88%</b>	<b>9.97%</b>	<b>11.59%</b>	<b>11.14%</b>	<b>11.45%</b>	<b>11.19%</b>

These headcounts are unduplicated and reflect the IPEDS unduplicated headcount.

## Enrollment by County for Pennsylvania Residents: Fall 2017

### Top 10 Counties\* With Most Enrollments Ranked

County	Total	Percent	Rank
Adams	56	0.38%	
Allegheny	41	0.28%	
Armstrong	0	0.00%	
Beaver	4	0.03%	
Bedford	1	0.01%	
Berks	484	3.32%	6
Blair	3	0.02%	
Bradford	13	0.09%	
Bucks	1,485	10.20%	5
Butler	8	0.05%	
Cambria	5	0.03%	
Cameron	0	0.00%	
Carbon	24	0.16%	
Centre	15	0.10%	
Chester	4,064	27.91%	1
Clarion	4	0.03%	
Clearfield	3	0.02%	
Clinton	4	0.03%	
Columbia	21	0.14%	
Crawford	3	0.02%	
Cumberland	246	1.69%	
Dauphin	223	1.53%	
Delaware	2,716	18.66%	2
Elk	0	0.00%	

County	Total	Percent	Rank
Erie	4	0.03%	
Fayette	1	0.01%	
Franklin	30	0.21%	
Fulton	1	0.01%	
Greene	1	0.01%	
Huntingdon	3	0.02%	
Indiana	3	0.02%	
Jefferson	0	0.00%	
Juniata	3	0.02%	
Lackawanna	208	1.43%	
Lancaster	460	3.16%	7
Lawrence	2	0.01%	
Lebanon	61	0.42%	
Lehigh	341	2.34%	8
Luzerne	131	0.90%	
Lycoming	20	0.14%	
McKean	3	0.02%	
Mercer	1	0.01%	
Mifflin	3	0.02%	
Monroe	106	0.73%	
Montgomery	2,159	14.83%	3
Montour	3	0.02%	
Northampton	282	1.94%	10
Northumberland	28	0.19%	

County	Total	Percent	Rank
Perry	12	0.08%	
Philadelphia	1,562	10.73%	4
Pike	47	0.32%	
Potter	0	0.00%	
Schuylkill	77	0.53%	
Snyder	8	0.05%	
Somerset	1	0.01%	
Sullivan	1	0.01%	
Susquehanna	12	0.08%	
Tioga	5	0.03%	
Union	7	0.05%	
Venango	0	0.00%	
Warren	1	0.01%	
Washington	4	0.03%	
Wayne	31	0.21%	
Westmoreland	14	0.10%	
Wyoming	11	0.08%	
York	298	2.05%	9
Not available	1	0.01%	
Total	15,369	100.00%	

\*County at the time of admission.

These headcounts are unduplicated and reflect the IPEDS unduplicated headcount.

## Head Count Enrollment: Fall 2013 to 2017

### Five-Year Enrollment by Ethnicity and Gender

#### Undergraduate Students

Ethnicity	2013		2014		2015		2016		2017	
	Male	Female	Male	Female	Male	Female	Male	Female	Male	Female
White	4,491	6,645	4,457	6,571	4,519	6,541	4,533	6,485	4,549	6,365
African American	494	754	492	857	575	914	595	1022	603	1027
Hispanic	267	369	286	404	314	448	345	446	345	486
Asian	124	168	118	176	118	187	126	202	143	214
Hawaiian/Pacific Islander	3	5	2	12	7	10	8	8	8	6
Native American	5	10	3	11	1	13	2	12	3	14
NRA-International	17	24	20	21	25	43	24	43	19	44
Multiracial	134	188	145	218	167	242	176	263	207	278
Not Supplied	7	6	24	27	36	52	51	56	59	81
<b>Total</b>	<b>5,542</b>	<b>8,169</b>	<b>5,547</b>	<b>8,297</b>	<b>5,762</b>	<b>8,450</b>	<b>5,860</b>	<b>8,537</b>	<b>5,936</b>	<b>8,515</b>

#### Graduate Students

Ethnicity	2013		2014		2015		2016		2017	
	Male	Female	Male	Female	Male	Female	Male	Female	Male	Female
White	509	1,133	539	1,142	511	1,285	597	1,366	709	1,447
African American	79	177	86	209	86	233	102	274	115	271
Hispanic	17	47	18	49	20	56	21	64	29	74
Asian	18	39	18	44	15	47	21	38	35	47
Hawaiian/Pacific Islander	1	0	3	0	0	0	1	1	0	0
Native American	1	4	1	3	0	2	0	1	0	0
NRA-International	25	38	39	46	34	50	25	37	21	35
Multiracial	10	18	13	19	9	28	8	32	13	40
Not Supplied	7	11	4	9	4	5	8	12	7	12
<b>Total</b>	<b>667</b>	<b>1,467</b>	<b>721</b>	<b>1,521</b>	<b>679</b>	<b>1,706</b>	<b>783</b>	<b>1,825</b>	<b>929</b>	<b>1,926</b>

These headcounts are unduplicated and reflect the IPEDS unduplicated headcount.

## Head Count Enrollment: Fall 2013 to 2017 Enrollment by College

### Undergraduate Students

College	2013	2014	2015	2016	2017
Arts & Humanities	1,781	1,658	1,591	1,498	1,516
Business and Public Management	2,287	2,910	3,361	3,655	3,922
Education & Social Work	1,367	1,301	1,232	1,283	1,274
Health Sciences	2,481	2,572	2,631	2,644	2,548
Science & Mathematics	2,759	2,770	2,910	2,920	2,941
Interdis & Grad Studies	2,669	2,259	2,126	2,022	1,915
School of Music	367	374	361	375	335
<b>Total</b>	<b>13,711</b>	<b>13,844</b>	<b>14,212</b>	<b>14,397</b>	<b>14,451</b>

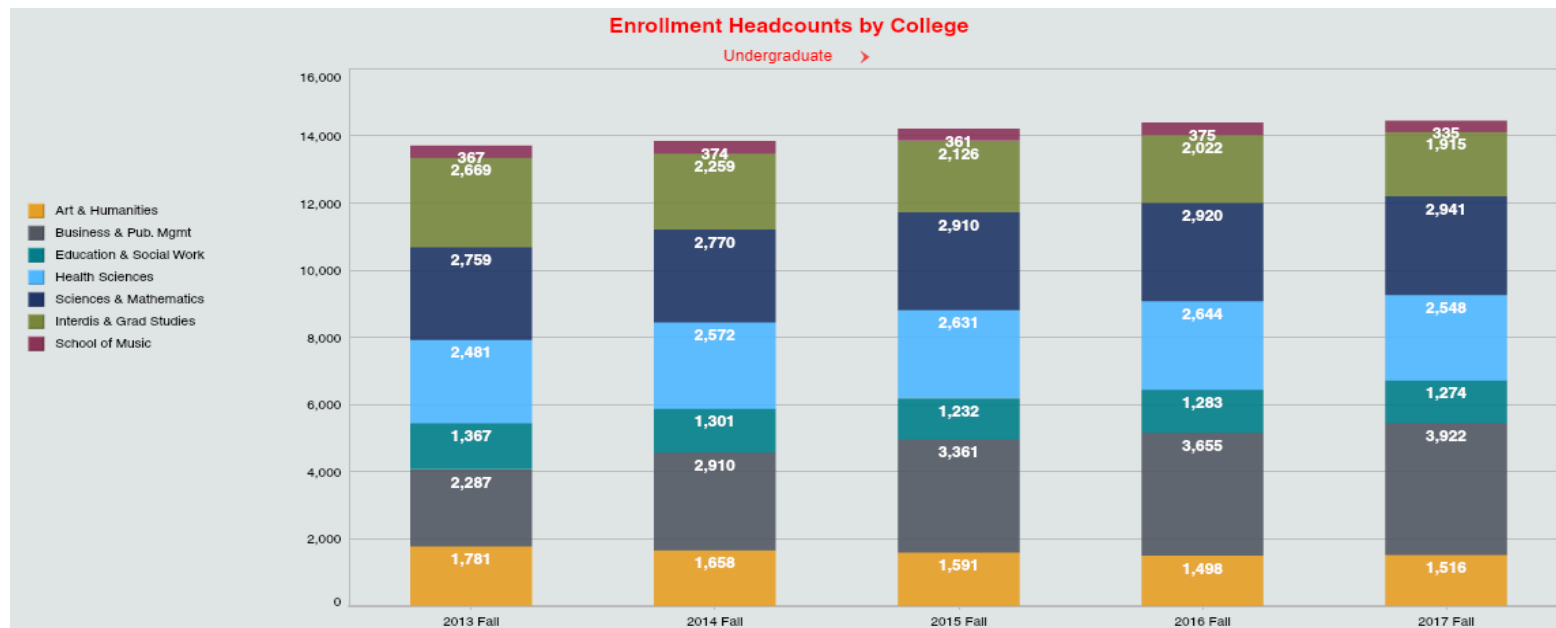
### Graduate Students

College	2013	2014	2015	2016	2017
Arts & Humanities	184	180	183	188	200
Business and Public Management	337	343	370	549	754
Education & Social Work	736	798	907	966	1,009
Health Sciences	334	370	413	440	465
Science & Mathematics	294	315	322	304	274
Interdis & Grad Studies	180	167	127	103	99
School of Music	69	69	63	58	54
<b>Total</b>	<b>2,134</b>	<b>2,242</b>	<b>2,385</b>	<b>2,608</b>	<b>2,855</b>

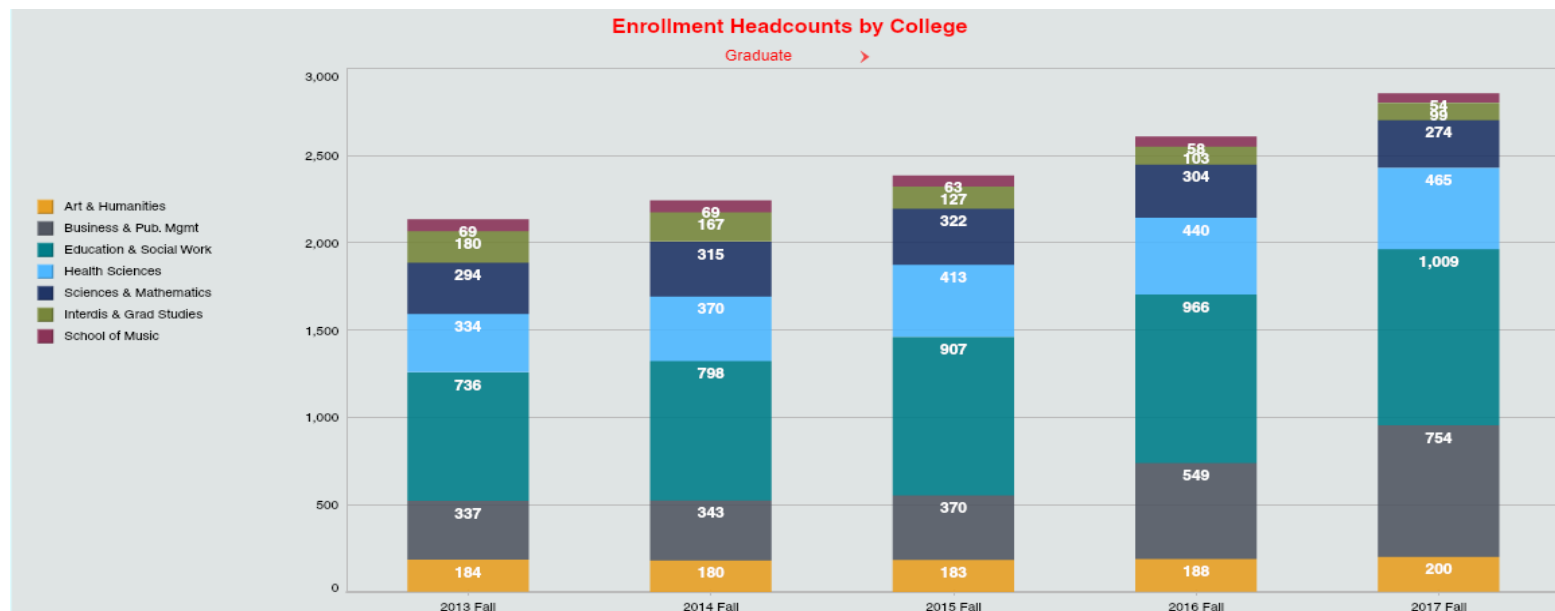
\* Interdis & Grad Studies (Interdisciplinary & Graduate Studies) include non-degree and undeclared major students.

These headcounts are unduplicated and reflect the IPEDS unduplicated headcount.

## Head Count Enrollment: Fall 2013 to 2017 Enrollment by College : Five Falls



Note: Non-degree and undeclared major students are included in Interdis & Grad Studies (Interdisciplinary & Graduate Studies).

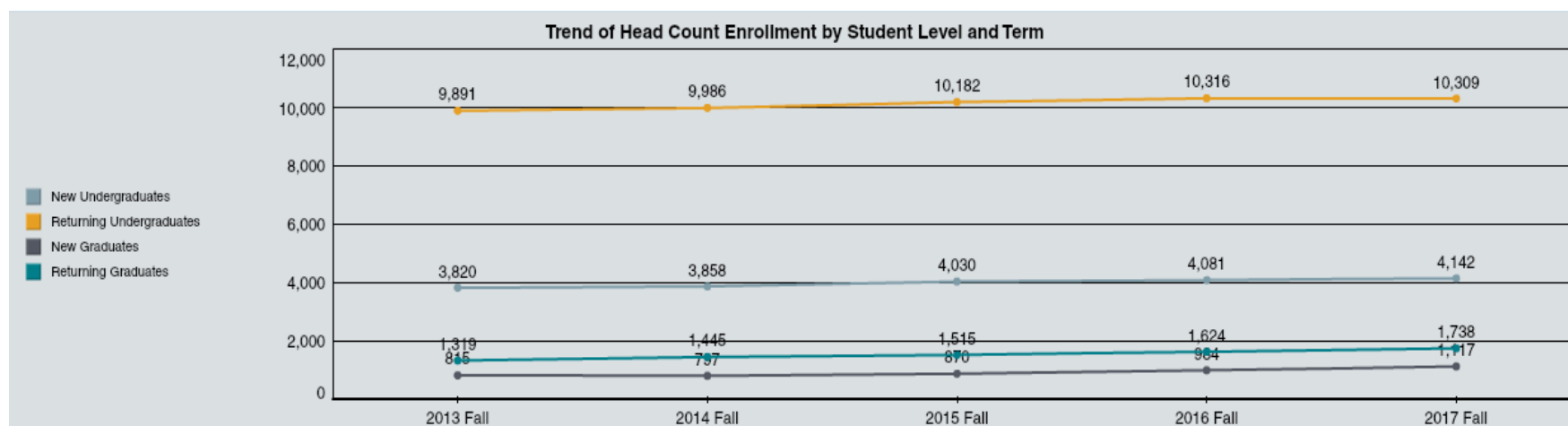


## Head Count Enrollment by Student Level: Fall 2012 to Fall 2017

Fall Semester	2013	2014	2015	2016	2017	One Year Difference
Undergraduate						
New First Year Degree Seeking	2,298	2,351	2,395	2,454	2,630	176
New Transfer Degree Seeking	1,349	1,331	1,415	1,457	1,332	-125
New Readmits Degree Seeking	76	107	100	56	73	17
New Undergraduate Non Degree	97	69	120	114	107	-7
Returning Undergraduate Degree Seeking First Year	657	555	596	573	663	90
Returning Undergraduate Degree Seeking Sophomore	2,585	2,650	2,616	2,671	2,610	-61
Returning Undergraduate Degree Seeking Junior	2,912	2,969	3,087	3,052	2,977	-75
Returning Undergraduate Degree Seeking Senior	3,579	3,647	3,738	3,859	3,917	58
Returning Undergraduate Non Degree	158	165	145	161	142	-19
Graduate						
New Masters	621	612	686	770	896	126
New Doctorate	-	17	38	74	69	-5
New Graduate Non Degree	194	168	146	140	152	12
Returning Masters	1,132	1,211	1,287	1,357	1,462	105
Returning Doctorate	-	15	40	72	107	35
Returning Graduate Non Degree	187	219	188	195	169	-26
<b>Total Enrollment</b>	<b>15,845</b>	<b>16,086</b>	<b>16,597</b>	<b>17,005</b>	<b>17,306</b>	<b>301</b>

These headcounts are unduplicated and reflect the IPEDS unduplicated headcount.

## Headcount Enrollment by Student Level Fall 2013-2017



## Credit Hours and Student FTE Enrollment FY 2012-13 to FY 2016-17

### Student FTE Enrollment: FY 2012-13 to FY 2016-17

FTE Division	2012-13	2013-14	2014-15	2015-16	2016-17	One Year Difference
Lower Division Full-Time Equivalent Students	8,070.5	8,184.6	8,277.9	8,458.2	8,386.1	-72.1
Upper Division Full-Time Equivalent Students	5,066.5	5,179.0	5,283.4	5,356.9	5,480.7	123.8
Graduate Division Full-Time Equivalent Students	1,405.7	1,466.8	1,567.8	1,620.0	1,755.3	135.3
<b>Total Full-Time Equivalent Students</b>	<b>14,542.7</b>	<b>14,830.4</b>	<b>15,129.1</b>	<b>15,435.1</b>	<b>15,622.1</b>	<b>187.0</b>

### Credit Hours: FY 2012-13 to FY 2016-17

College	2012-13	2013-14	2014-15	2015-16	2016-17	One Year Difference
Arts & Humanities	133,903.5	130,937.0	130,570.0	130,834.5	128,114.0	-2,720.5
Business and Public Management	56,813.0	62,116.0	68,073.0	75,654.0	82,740.0	7,086.0
*Interdisciplinary & Graduate Studies	3,148.5	3,047.0	3,440.0	2,873.0	3,307.5	434.5
Education & Social Work	47,561.0	47,078.0	47,066.0	46,451.0	48,560.0	2,109.0
Health Sciences	60,464.5	64,313.0	66,164.0	67,461.0	68,469.0	1,008.0
Science & Mathematics	125,957.0	128,618.0	129,152.0	130,060.0	126,939.0	-3,121.0
<b>Total University Credit Hours</b>	<b>427,847.5</b>	<b>436,109.0</b>	<b>444,444.0</b>	<b>453,333.5</b>	<b>458,129.5</b>	<b>4,796.0</b>

\*Interdisciplinary & Graduate Studies include non-degree and undeclared major students.



## Credit Hours by College and Course Division For FY 2016-17

College	Lower	Upper	Total Undergraduate	Graduate	Total	% Graduate
Arts & Humanities	92,921.0	31,644.0	124,565.0	3,549.0	128,114.0	2.8%
Business and Public Management	30,621.0	42,955.0	73,576.0	9,164.0	82,740.0	11.1%
Education & Social Work	8,517.0	23,849.0	32,366.0	16,194.0	48,560.0	33.3%
Health Sciences	25,165.0	34,843.0	60,008.0	8,461.0	68,469.0	12.4%
Science & Mathematics	92,801.0	29,379.0	122,180.0	4,759.0	126,939.0	3.7%
*School of Interdisciplinary & Graduate Studies	1,557.0	1,750.5	3,307.5	0.0	3,307.5	0.0%
<b>Total University Credit Hours</b>	<b>251,582.0</b>	<b>164,420.5</b>	<b>416,002.5</b>	<b>42,127.0</b>	<b>458,129.5</b>	<b>9.2%</b>

\*School of Interdisciplinary & Graduate Studies include non-degree and undeclared students.



## **RETENTION AND GRADUATION**

### Retention and Graduation Rates for First-time, Full-Time, First-Year, Degree-Seeking Student Cohorts --University Summary

Fall Cohort	N 1st Fall	2nd Fall		3rd Fall		4th Fall		5th Fall				6th Fall				7th Fall			
		Cohort Retained		Cohort Retained		Cohort Retained		Cumulative Graduated within 4 yrs*		Cohort Retained		Cumulative Graduated within 5 yrs		Cohort Retained		Cumulative Graduated within 6 yrs		Cohort Retained	
		n	% 1F	n	% 1F	n	% 1F	n	% 1F	n	% 1F	n	% 1F	n	% 1F	n	% 1F	n	% 1F
2004	1,874	1,570	84.0	1,361	72.8	1,306	69.8	736	39.4	535	28.6	1,160	62.0	95	5.1	1,228	65.7	29	1.6
2005	1,901	1,607	84.7	1,442	76.0	1,378	72.6	817	43.0	528	27.8	1,243	65.5	81	4.3	1,303	68.7	26	1.4
2006	1,885	1,616	85.8	1,467	77.9	1,401	74.4	803	42.6	553	29.4	1,233	65.5	93	4.9	1,298	68.9	26	1.4
2007	1,957	1,650	84.4	1,511	77.3	1,428	73.0	857	43.8	536	27.4	1,266	64.8	96	4.9	1,346	68.8	27	1.4
2008	1,993	1,683	84.5	1,517	76.2	1,453	72.9	872	43.8	525	26.4	1,271	63.8	108	5.4	1,340	67.3	35	1.8
2009	2,241	1,908	85.2	1,746	77.9	1,692	75.5	954	42.6	670	29.9	1,502	67.1	113	5.0	1,588	70.9	36	1.6
2010	2,062	1,773	86.1	1,636	79.4	1,568	76.1	947	46.0	555	26.9	1,391	67.5	88	4.3	1,444	70.1	31	1.5
2011	2,283	1,948	85.4	1,820	79.8	1,731	75.9	1,110	48.7	593	26.0	1,586	69.5	102	4.5	1,656	72.6	25	1.1
2012	2,326	2,031	87.4	1,881	80.9	1,803	77.5	1,178	50.7	596	25.6	1,656	71.2	97	4.2				
2013	2,292	2,010	87.8	1,883	82.3	1,802	78.8	1,227	53.6	558	24.4								
2014	2,344	2,059	87.9	1,930	82.4	1,862	79.5												
2015	2,381	2,043	85.8	1,909	80.2														
2016	2,441	2,077	85.1																
2017	2,620																		

Note: Data is from Fall enrollment at census dates and completions files as reported to IPEDS. Includes degree sweeps and IPEDS exclusions through 10/2017.

### Second-Year Retention Rates for First-Time, Full-Time, Degree-Seeking First Year by Race/Ethnicity

Fall Cohort	African American			Asian			Latino			Native American			Caucasian		
	N 1 <sup>st</sup> Fall	N 2 <sup>nd</sup> Fall	% Retained	N 1 <sup>st</sup> Fall	N 2 <sup>nd</sup> Fall	% Retained	N 1 <sup>st</sup> Fall	N 2 <sup>nd</sup> Fall	% Retained	N 1 <sup>st</sup> Fall	N 2 <sup>nd</sup> Fall	% Retained	N 1 <sup>st</sup> Fall	N 2 <sup>nd</sup> Fall	% Retained
2010	203	170	83.7	41	36	87.8	114	87	76.3	2	1	50.0	1,643	1,423	86.6
2011	191	154	80.6	30	26	86.7	163	133	81.6	1	1	100.0	1,836	1,585	86.3
2012	211	181	85.8	48	43	89.6	136	114	83.8	0	0	0.0	1,880	1,651	87.8
2013	231	193	83.5	48	44	91.7	121	101	83.5	1	1	100.0	1,808	1,602	88.6
2014	232	190	81.9	48	42	87.5	119	106	89.1	1	1	100.0	1,843	1,638	88.9
2015	251	214	85.3	38	33	86.8	159	127	79.9	1	1	100.0	1,831	1,591	86.9
2016	263	216	82.1	53	45	84.9	147	110	74.8	0	0	0.0	1,843	1,603	87.0
2017	242			63			157			0			2,014		

Note: Data is from Fall enrollment at census dates and completions files as reported to IPEDS. Includes degree sweeps and IPEDS exclusions through 10/2017.

### Second-Year Retention Rates for First-Time, Full-Time, Degree-Seeking First Year by Gender

Fall Cohort	Male			Female		
	N 1 <sup>st</sup> Fall	N 2 <sup>nd</sup> Fall	% Retained	N 1 <sup>st</sup> Fall	N 2 <sup>nd</sup> Fall	% Retained
2010	765	641	83.8	1,295	1,132	87.4
2011	903	753	83.4	1,378	1,195	86.7
2012	868	763	87.9	1,457	1,268	87.0
2013	806	683	84.8	1,482	1,327	89.5
2014	891	789	88.6	1,452	1,270	87.5
2015	888	746	84.0	1,492	1,297	86.9
2016	944	788	83.5	1,497	1,289	86.1
2017	1,031			1,589		

Note: Data is from Fall enrollment at census dates and completions files as reported to IPEDS. Includes degree sweeps and IPEDS exclusions through 10/2017.

### Four Year Graduation Rates for First-Time, Full-Time First Year by Race/Ethnicity

Fall Cohort	African American			Asian			Latino			Native American			Caucasian		
	N 1st Fall	N Graduated within 4 years	% Graduated within 4 years	N 1st Fall	N Graduated within 4 years	% Graduated within 4 years	N 1st Fall	N Graduated within 4 years	% Graduated within 4 years	N 1st Fall	N Graduated within 4 years	% Graduated within 4 years	N 1st Fall	N Graduated within 4 years	% Graduated within 4 years
2008	201	38	18.9	43	20	46.5	90	33	36.7	5	2	40.0	1,647	777	47.2
2009	177	29	16.4	39	11	28.2	85	20	23.5	6	1	16.7	1,907	881	46.2
2010	203	44	21.7	41	16	39.0	114	34	29.8	2	1	50.0	1,643	826	50.3
2011	191	50	26.2	30	15	50.0	163	56	34.4	1	1	100.0	1,836	962	52.4
2012	211	54	25.6	48	26	54.2	136	52	38.2	0	0	0.0	1,880	1,025	54.5
2013	231	55	23.8	48	28	58.3	121	51	42.1	1	1	100.0	1,808	1,053	58.2

Note: Data is from Fall enrollment at census dates and completions files as reported to IPEDS. Includes degree sweeps and IPEDS exclusions through 10/2017.

### Six Year Graduation Rates for First-Time, Full-Time First Year by Race/Ethnicity

Fall Cohort	African American			Asian			Latino			Native American			Caucasian		
	N 1st Fall	N Graduated within 6 years	% Graduated within 6 years	N 1st Fall	N Graduated within 6 years	% Graduated within 6 years	N 1st Fall	N Graduated within 6 years	% Graduated within 6 years	N 1st Fall	N Graduated within 6 years	% Graduated within 6 years	N 1st Fall	N Graduated within 6 years	% Graduated within 6 years
2006	171	98	57.3	41	24	58.5	66	33	50.0	5	3	60.0	1,596	1,136	71.2
2007	190	98	51.6	39	28	71.8	61	32	52.5	9	7	77.8	1,655	1,181	71.4
2008	201	110	54.7	43	31	72.1	90	62	68.9	5	4	80.0	1,647	1,130	68.6
2009	177	86	48.6	39	26	66.7	85	45	52.9	6	4	66.7	1,907	1,411	74.0
2010	203	106	52.2	41	30	73.2	114	70	61.4	2	1	50.0	1,643	1,194	72.7
2011	191	106	55.5	30	23	76.7	163	98	60.1	1	1	100.0	1,836	1,384	75.4

Note: Data is from Fall enrollment at census dates and completions files as reported to IPEDS. Includes degree sweeps and IPEDS exclusions through 10/2017.

### Four Year Graduation Rates for First-Time, Full-Time First Year by Gender

Fall Cohort	Male			Female		
	N 1st Fall	Graduated within 4 years		N 1st Fall	Graduated within 4 years	
		#	%		#	%
<b>2008</b>	761	232	30.5	1,231	640	52.0
<b>2009</b>	887	277	31.2	1,353	677	50.0
<b>2010</b>	765	264	34.5	1,295	683	52.7
<b>2011</b>	903	338	37.4	1,378	772	56.0
<b>2012</b>	868	358	41.2	1,457	820	56.3
<b>2013</b>	806	331	41.1	1,482	896	60.5

Note: Data is from Fall enrollment at census dates and completions files as reported to IPEDS. Includes degree sweeps and IPEDS exclusions through 10/2017.

### Six Year Graduation Rates for First-Time, Full-Time First Year by Gender

Fall Cohort	Male			Female		
	N 1st Fall	Graduated within 6 years		N 1st Fall	Graduated within 6 years	
		#	%		#	%
<b>2006</b>	683	401	58.7	1,200	897	74.8
<b>2007</b>	740	455	61.5	1,215	891	73.3
<b>2008</b>	761	463	60.8	1,231	877	71.2
<b>2009</b>	887	581	65.5	1,353	1007	74.4
<b>2010</b>	765	475	62.1	1,295	969	74.8
<b>2011</b>	903	603	66.8	1,378	1053	76.4

Note: Data is from Fall enrollment at census dates and completions files as reported to IPEDS. Includes degree sweeps and IPEDS exclusions through 10/2017.

A large purple L-shaped graphic is positioned on the right side of the page, partially overlapping the text box.

## **ACADEMIC DEGREE AND CERTIFICATE PROGRAMS**

## Undergraduate Degree and Certificate Programs - Fall 2017

### College of Arts and Humanities

BA Communication Studies  
 BA English: Literature  
 BA English: Writings  
 BA History  
 BA History: American Studies  
 BA Languages & Cultures: French  
 BA Languages & Cultures: German  
 BA Languages & Cultures: Russian  
 BA Languages & Cultures: Spanish  
 BA Philosophy  
 BA Philosophy Accelerated  
 BA Philosophy: Religious Studies  
 BA: Theatre  
 BA Theatre: Design/Tech/Management  
 BA Theatre: Music Theatre  
 BA Theatre: Performance  
 BA Women's and Gender Studies  
 BFA Graphic & Inter. Design  
 BFA Studio Arts  
 BSED English: Literature  
 BSED English: Writings  
 Certificate TESL  
 Teaching Certification English  
 Teaching Certification French  
 Teaching Certification German  
 Teaching Certification Latin  
 Teaching Certification Russian  
 Teaching Certification Social Studies - History  
 Teaching Certification Spanish

### College of Arts and Humanities (cont...)

Teaching Certification Teacher Ed French  
 Teaching Certification Teacher Ed German  
 Teaching Certification Teacher Ed Russian  
 Teaching Certification Teacher Ed Spanish  
 Teaching Certification Teacher Ed Social Studies - History

### School of Music

BM Music: Performance Instr  
 BM Music: Performance Jazz  
 BM Music: Performance Keyboard  
 BM Music: Performance Voice  
 BM Music Educ: Instrument  
 BM Music Educ: Keyboard  
 BM Music Educ: Voice  
 BM Music: Elective Studies  
 BM Music: History  
 BM Music: Theory  
 BM Music: Composition  
 Teaching Certification Music Education

### College of Business and Public Management

BA Geography  
 BA Geography Accelerated  
 BA Geography: Environmental  
 BA Geography: Environmental Accelerated  
 BA Geography: Geographic Information Systems  
 BA Geography: Urban/Regional Planning

### College of Business and Public Management (cont...)

BS Accounting  
 BS Business Management  
 BS Criminal Justice  
 BS Criminal Justice Accelerated  
 BS Criminal Justice (Philadelphia)  
 BS Economics  
 BS Finance  
 BS International Business  
 BS Marketing  
 BS Pre-Business Accounting  
 BS Pre-Business: Eco-Finance  
 BS Pre-Business: Management  
 BS Pre-Business: Marketing  
 BS Urban & Environmental Plan  
 Pre-International Business  
 Teacher Education Social Studies - Geography Teacher Certification

### College of Education and Social Work

BSED Early Grades Prep, PK-4 Education  
 BSED Middle Grades Prep, 4-8 Education  
 BSED Special Education: 7-12  
 BSED Special Education: PK-8  
 BSW Social Work  
 BSW Social Work (Philadelphia)  
 Certificate Education for Sustainability  
 Teaching Certification Early Childhood Education



## Undergraduate Degree and Certificate Programs - Fall 2017 (continued)

### College of Health Sciences

BA Communication Science & Disorders  
 BS Environmental Health  
 BS Exercise Science  
 BS Health and Physical Education  
 BS Health Science: General  
 BS Health Science: Respiratory Care  
 BS Health Science: Sport Medicine Concentration  
 BS Health Science: Sport Medicine Concentration Accelerated  
 BS Nutrition and Dietetics  
 BS Nutrition and Dietetics Accelerated  
 BS Pre-Chiropractic  
 BS Pre-Occupational Therapy  
 BS Pre-Physical Therapy  
 BS Public Health  
 BSN Nursing  
 BSN Nursing: 2nd Degree  
 BSN Nursing: RN  
 BSN Nursing: RN (Philadelphia)  
 Certificate Athletic Training  
 Pre-Grad Program Certificate

### School of Interdisciplinary and Graduate Studies

BA Liberal Studies: Arts & Science  
 BS Liberal Studies: Profession  
 BS Liberal Studies: Science/Math  
 Certificate Honors Seminar  
 Undeclared Business  
 Undeclared General  
 Undeclared Internal Transfer

### College of Science and Mathematics

BA Anthropology  
 BA Geography: GIS Accelerated  
 BA Mathematics  
 BA Mathematics Accelerated  
 BA Political Science: Applied Public Policy  
 BA Political Science: Government and Politics  
 BA Political Science: Int'l Relations  
 BA Psychology  
 BA Sociology  
 BS Biology  
 BS Biology: Cell & Molecular  
 BS Biology: Ecology/Conserv  
 BS Biology: Integ. Accelerated  
 BS Biology: Marine Science  
 BS Biology: Medical Lab Science  
 BS Biology: Microbiology  
 BS Chemistry  
 BS Chemistry-Biology  
 BS Computer Science  
 BS Computer Science Accelerated  
 BS Foren & Toxicol Chemistry  
 BS Geoscience: Earth Systems  
 BS Geoscience: Earth Systems Accelerated  
 BS Geoscience: Geology  
 BS Geoscience: Geology Accelerated  
 BS Mathematics: Actuarial Science  
 BS Mathematics: Applied & Computational  
 BS Mathematics: Applied & Computational Accelerated  
 BS Mathematics: Finance  
 BS Mathematics: Pure Mathematics

### College of Science & Mathematics (cont..)

BS Mathematics: Pure Mathematics Accelerated  
 BS Mathematics: Statistics  
 BS Mathematics: Statistics Accelerated  
 BS Pharmaceutical Product Dev  
 BS Physics  
 BS Physics-Engineering  
 BSED Biology  
 BSED Chemistry  
 BSED Earth-Space Sci: Geology  
 BSED Earth-Space Science  
 BSED Mathematics  
 BSED Physics  
 Computer Security CERTIF  
 Teaching Certification Biology  
 Teaching Certification Chemistry  
 Teaching Certification Earth-Space Science  
 Teaching Certification General Science  
 Teaching Certification Mathematics  
 Teaching Certification Physics  
 Teaching Education General Science  
 Teaching Education Social Studies-Political Science

## Graduate Degree and Certificate Programs - Fall 2017

### College of Arts and Humanities

Certificate Business Ethics  
 Certificate Healthcare Ethics  
 Certificate Holocaust and Genocide Studies  
 Certificate Publishing  
 Certificate TESL  
 MA Communication Studies  
 MA English  
 MA History  
 MA Holocaust and Genocide Studies  
 MA Languages & Cultures in French  
 MA Languages & Cultures in German  
 MA Languages & Cultures in Spanish  
 MA Philosophy: Applied Ethics  
 MA Philosophy: General  
 MA Philosophy: Applied Ethics - Accelerated  
 MA Philosophy: General - Accelerated  
 MA TESL  
 MED History  
 MPA Leadership for Women  
 Teaching Certification English  
 Teaching Certification French  
 Teaching Certification German  
 Teaching Certification Latin  
 Teaching Certification Social Studies - History  
 Teaching Certification Spanish

### School of Music

Certificate Kodaly Methodology  
 Certificate Music Technology  
 Certificate Orff-Schulwerk  
 Certificate Piano Pedagogy  
 MM Music Performance- Organ  
 MM Music Performance- Piano  
 MM Music Performance- Vocal  
 MM Music Performance  
 MM Music Performance- Instrument  
 MM Music: Piano Pedagogy  
 MM Music: Theory & Composition  
 MM Music Education: Kodaly  
 MM Music Education: Mus. Tech  
 MM Music Education: Orff Schulwerk  
 MM Music Education: Research  
 MM Music Education: Performance  
 MM Music Performance- Choral  
 MM Music Performance- Instrument Cond  
 Music Education: Technology  
 Music: History and Literature  
 Teaching Certification Music Education

### College of Business and Public Management

Certificate Administration  
 Certificate in Business Analytics  
 Entrepreneurship Certificate  
 Certificate Geographic Information Systems  
 Certificate Human Resource Management  
 Certificate Non Profit Administration  
 Certificate in Project Management  
 Certificate Urban and Regional Planning  
 Doctor of Public Administration  
 Master of Urban and Regional Planning  
 MBA General  
 MPA Human Resource Management  
 MPA Individualized Program  
 MPA Nonprofit Administration  
 MPA Public Administration  
 MS Criminal Justice  
 MS Criminal Justice (Philadelphia)  
 MS Criminal Justice -Accelerated  
 MS Geography  
 MS Geography -Accelerated  
 MS Human Resource Management

## Graduate Degree and Certificate Programs - Fall 2017 (continued)

### College of Education and Social Work

Certificate Autism  
 Certificate Education for Sustainability  
 Certificate Educational Technology  
 Certificate Entrepreneurial Education  
 Certificate Gerontology  
 Certificate Literacy  
 Certificate Literacy Coaching  
 Certificate of Advanced Graduate Professional Growth  
 Certificate Professional Counseling Licensure Prep  
 Certificate Special Education  
 Certificate Universal Design Learning  
 Doctor of Education  
 MED Applied Studies in Teaching and Learning  
 MED Applied Studies in Teaching and Learning (sprf)  
 MED Counseling - School  
 MED Early Childhood Education  
 MED Reading  
 MED Secondary Education  
 MED Special Education  
 MED Special Education (online)  
 MS - Higher Education Counseling/Student Affairs  
 MS Clinical Mental Health Counseling  
 MS Higher Education Pol. & Student Affairs  
 MS Transfer Education & Soc. Change  
 MSW Social Work  
 MSW Social Work Advanced Stand  
 MSW Social Work (Phila)  
 MSW Social Work , Adv St, Phila  
 Professional Growth Counselling  
 Professional Growth Reading  
 Professional Growth Special Education  
 Reading MED at Coatsville School Dist  
 Reading MED at OJR School Dist  
 Teaching Certification Counseling  
 Teaching Certification Early Childhood Education  
 Teaching Certification Early Grades Preparation  
 Teaching Certification Middle Grades Preparation  
 Teaching Certification Reading  
 Teaching Certification Secondary Education

### College of Education and Social Work (cont..)

Teaching Certification Special Education 7-12 (Online)  
 Teaching Certification Special Education 7-12 (Philadelphia)  
 Teaching Certification Special Education: 7-12  
 Teaching Certification Special Education: K-12  
 Teaching Certification Special Education: PK-8  
 Teaching Certification Special Education: PK-8 (Online)  
 Teaching Certification Special Education: PK-8 (Philadelphia)  
 Teaching Certification Reading (Philadelphia)

### College of Science and Mathematics

Certificate Web Technology  
 Certificate Applied Statistics  
 Certificate Computer Security  
 Certificate in Indust/Organiz Psych  
 Certificate Information Systems  
 Certificate Clinical Mental Health  
 Doctorate of Psychology  
 MA Mathematics  
 MA Mathematics Accelerated  
 MA Psychology: Clinical  
 MA Psychology: General  
 MA Psychology: Industrial/Organizational  
 MS Applied & Computational Math  
 MS Applied & Computational Math Accelerated  
 MS Applied Statistics  
 MS Applied Statistics Accelerated  
 MS Biology: Non-Thesis  
 MS Biology: Thesis  
 MS Biology: Thesis Accelerated  
 MS Computer Science  
 MS Computer Science Accelerated  
 MS Geoscience  
 MS Geoscience Accelerated  
 Teaching Certification Biology  
 Teaching Certification Chemistry  
 Teaching Certification Earth-Space Science  
 Teaching Certification General Science  
 Teaching Certification Physics

### College of Health Sciences

Doctorate of Nursing Practice  
 Certificate Adapted Physical Education  
 Certificate Emergency Preparedness  
 Certificate Health Care Management  
 Certificate Health: Integrative Health  
 Certificate Post Master Dietetic Intern  
 Certificate School Nursing  
 Certificate Sports Management and Athletics  
 MA Speech-Language Pathology  
 MED Health - School Health  
 MPH Public Health: Administration  
 MPH Public Health: Community  
 MPH Public Health: Environment  
 MPH Public Health: Integrative  
 MPH Public Health: Management  
 MPH: Nutrition  
 MS Athletic Training  
 MS Athletic Training Accelerated  
 MS Community Nutrition  
 MS Community Nutrition Accelerated  
 MS Exercise and Sport Physiology  
 MS Exercise and Sport Physiology: Athletic Training  
 MS Health and Physical Education - Sport/Exercise Physiology  
 MS Physical Education  
 MSN Nursing  
 MSN Nursing: Advanced Practice-Adult Gerontology  
 MSN Nursing: Educator  
 Teaching Certificate Health & Physical Education  
 Teaching Certificate School Nursing

## Professional and Program Accreditations

West Chester University is accredited by  
The Middle States Commission on Higher Education (MSCHE)

Accreditation Board for Engineering and Technology (ABET)  
Accreditation Council for Continuing Medical Education (ACCME)  
Accreditation Council for Education in Nutrition and Dietetics (ACEND)  
American Chemical Society (ACS)  
American Council on the Teaching of Foreign Languages (ACTFL) - Recognized Programs  
American Orff Schulwerk Association (AOSA)  
American Speech-Language-Hearing Association (ASHA)  
Association to Advance Collegiate Schools of Business (AACSB)  
Association for Middle Level Education (AMLE) - Recognized Programs  
Commission on Accreditation of Allied Health Education Programs (CAAHEP) - Pending Renewal  
Commission on Accreditation of Athletic Training Education (CAATE)  
Commission on Collegiate Nursing Education (CCNE)  
Committee on Accreditation for Respiratory Care (CoARC)  
Council on Education for Public Health (CEPH)  
Council for Exceptional Children (CEC) - Recognized Programs  
Council on Social Work Education (CSWE)

## Professional and Program Accreditations (Continued)

Council for Accreditation of Counseling and Related Educational Programs (CACREP)  
Forensic Science Education Programs Accreditation Communication(FEPAC)  
International Literacy Association (ILA)- Recognized Programs  
Middle States Commission on higher Education (MSCHE)  
National Association of Schools of Music (NASM)  
National Association for the Education of Young Children (NAEYC) - Recognized Programs  
National Association of Schools of Art and Design (NASAD)  
National Association of Schools of Theatre (NAST)  
National Council for the Accreditation of Teacher Education (NCATE)  
National Council for the Social Studies (NCSS) - Recognized Programs  
National Council of Teachers of English (NCTE) - Recognized Programs  
National Science Teachers Association (NSTA) - Recognized Programs  
National Environmental Health Science and Protection Accreditation Council (EHAC)  
Network of Schools of Public Policy, Affairs, and Administration (NASPAA)  
Organization of American Kodaly Educators (OAKE)  
Pennsylvania Department of Education (PDE)  
Society of Health and Physical Educators (SHAPE) - Recognized Programs



## **DEGREES CONFERRED**

The following counts include only Baccalaureate (Primary and Secondary Major), Master's and Doctoral degrees.

## College of Art & Humanities

	2012-13	2013-14	2014-15	2015-16	2016-17
<b>Communication Studies</b>					
Communication Studies BA	160	139	155	192	212
<b>Communication Studies Undergraduate Total</b>	<b>160</b>	<b>139</b>	<b>155</b>	<b>192</b>	<b>212</b>
Commun. Studies MA (Phila)				1	1
Communication Studies MA	11	9	10	7	7
<b>Communication Studies Graduate Total</b>	<b>11</b>	<b>9</b>	<b>10</b>	<b>8</b>	<b>8</b>
<b>Communication Studies Total</b>	<b>171</b>	<b>148</b>	<b>165</b>	<b>200</b>	<b>220</b>

## English

English BA: Literature	24	30	33	20	22
English BA: Writings	43	47	63	48	36
English BS/ED: Literature	30	36	14	21	15
English BS/ED: Writings	10	18	10	10	8
<b>English Undergraduate Total</b>	<b>107</b>	<b>131</b>	<b>120</b>	<b>99</b>	<b>81</b>
English MA	24	38	25	14	10
<b>English Graduate Total</b>	<b>24</b>	<b>38</b>	<b>25</b>	<b>14</b>	<b>10</b>
<b>English Total</b>	<b>131</b>	<b>169</b>	<b>145</b>	<b>113</b>	<b>91</b>

## Foreign Languages

BA Languages & Culture, French				1	3
BA Languages & Culture, Russia			1	1	5
BA Languages & Cultures, Span				2	6
French BA	9	8	7	6	3
German BA	10	3	7	6	2
Latin BA	1	2			
Russian BA	6	3	5	6	1
Spanish BA	28	22	19	13	13
<b>Foreign Languages Undergraduate Total</b>	<b>54</b>	<b>38</b>	<b>39</b>	<b>35</b>	<b>33</b>

### Foreign Languages Continued...

	2012-13	2013-14	2014-15	2015-16	2016-17
French MA	5	2	5	1	1
French MED	2	2	2	2	2
Lang & Cultures MA, French				1	
Lang & Cultures MA, Spanish				1	
Spanish MA		3	3	2	3
Spanish MED	1	1		1	2
<b>Foreign Languages Graduate Total</b>	<b>8</b>	<b>8</b>	<b>10</b>	<b>8</b>	<b>8</b>
<b>Foreign Languages Total</b>	<b>62</b>	<b>46</b>	<b>49</b>	<b>43</b>	<b>41</b>

### History

History BA	101	94	86	77	65
History: American Studies BA	1	1	1		1
<b>History Undergraduate Total</b>	<b>102</b>	<b>95</b>	<b>87</b>	<b>77</b>	<b>66</b>
History MA	2	9	6	6	6
History MED					1
<b>History Graduate Total</b>	<b>2</b>	<b>9</b>	<b>6</b>	<b>6</b>	<b>7</b>
<b>History Total</b>	<b>104</b>	<b>104</b>	<b>93</b>	<b>83</b>	<b>73</b>

### Holocaust and Genocide Studies

Holocaust & Genocide Studie MA	2	8	5	7	3
<b>Holocaust and Genocide Graduate Total</b>	<b>2</b>	<b>8</b>	<b>5</b>	<b>7</b>	<b>3</b>
<b>Holocaust and Genocide Studies Total</b>	<b>2</b>	<b>8</b>	<b>5</b>	<b>7</b>	<b>3</b>

### Philosophy

Philosophy BA	14	20	10	13	15
Philosophy:Religious Studie BA	2	2	1		2
<b>Philosophy Undergraduate Total</b>	<b>16</b>	<b>22</b>	<b>11</b>	<b>13</b>	<b>17</b>
Philosophy MA: Applied Ethics		1		1	
Philosophy MA: General	5	6	5	2	5
<b>Philosophy Graduate Total</b>	<b>5</b>	<b>7</b>	<b>5</b>	<b>3</b>	<b>5</b>
<b>Philosophy Total</b>	<b>21</b>	<b>29</b>	<b>16</b>	<b>16</b>	<b>22</b>



<b>Teach Eng as a Second Lang</b>	<b>2012-13</b>	<b>2013-14</b>	<b>2014-15</b>	<b>2015-16</b>	<b>2016-17</b>
TESL MA	10	7	11	9	6
<b>Teach Eng as a Second Language Graduate Total</b>	<b>10</b>	<b>7</b>	<b>11</b>	<b>9</b>	<b>6</b>
<b>Teach Eng as a Second Lang Total</b>	<b>10</b>	<b>7</b>	<b>11</b>	<b>9</b>	<b>6</b>

### **Womens Studies**

Women's and Gender Studies BA	7	12	5	18	13
<b>Women Studies Undergraduate Total</b>	<b>7</b>	<b>12</b>	<b>5</b>	<b>18</b>	<b>13</b>
<b>Womens Studies Total</b>	<b>7</b>	<b>12</b>	<b>5</b>	<b>18</b>	<b>13</b>

### **Art & Design**

Graphic & Inter. Design BFA			30	30	25
Studio Arts BA	1	1			
Studio Arts BFA	47	48	26	23	13
<b>Art &amp; Design Undergraduate Total</b>	<b>48</b>	<b>49</b>	<b>56</b>	<b>53</b>	<b>38</b>
<b>Art &amp; Design Total</b>	<b>48</b>	<b>49</b>	<b>56</b>	<b>53</b>	<b>38</b>

### **Theatre Arts**

Theatre and Dance: Dance BA	2	1	1		
Theatre: BA	3	4	7	4	8
Theatre: Design/Tech/Manag BA	3	4	2	3	3
Theatre: Mus Thtre BA	9	7	7	7	15
Theatre: Performance BA	4	8	4	3	
<b>Theatre Arts Undergraduate Total</b>	<b>21</b>	<b>24</b>	<b>21</b>	<b>17</b>	<b>26</b>
<b>Theatre Arts Total</b>	<b>21</b>	<b>24</b>	<b>21</b>	<b>17</b>	<b>26</b>
<b>College of Arts and Humanities Undergraduate Total</b>	<b>515</b>	<b>510</b>	<b>494</b>	<b>504</b>	<b>486</b>
<b>College of Arts and Humanities Graduate Total</b>	<b>62</b>	<b>86</b>	<b>72</b>	<b>55</b>	<b>47</b>
<b>College of Art &amp; Humanities Total</b>	<b>577</b>	<b>596</b>	<b>566</b>	<b>559</b>	<b>533</b>

## School of Music

### Applied Music

	2012-13	2013-14	2014-15	2015-16	2016-17
Music: Performance Instr BM	13	10	11	16	21
Music: Performance Jazz BM	2	1		1	4
Music: Performance Keyboard BM	2	5	1	1	1
Music: Performance Voice BM	7	5	3	4	6
<b>Applied Music Undergraduate Total</b>	<b>24</b>	<b>21</b>	<b>15</b>	<b>22</b>	<b>32</b>
Music Performance MM	8	15	15	11	9
Music: Piano Pedagogy MM		1		3	3
Music Perform-MM Instrum. Cond					1
<b>Applied Music Graduate Total</b>	<b>8</b>	<b>16</b>	<b>15</b>	<b>14</b>	<b>13</b>
<b>Applied Music Total</b>	<b>32</b>	<b>37</b>	<b>30</b>	<b>36</b>	<b>45</b>

### Music Education

Music Educ: Instrument BM	29	22	30	45	36
Music Educ: Keyboard BM	7	2	5	2	5
Music Educ: Voice BM	15	10	16	11	11
<b>Music Education Undergraduate Total</b>	<b>51</b>	<b>34</b>	<b>51</b>	<b>58</b>	<b>52</b>
Music Education MM: Research	1	3	6	4	2
Music Education MM: Performance	14	5	8	5	1
Music Education MM: Kodaly					2
Music Education MM: Orff-Schul					5
Music Education: Technology	2	1	4	1	4
<b>Music Education Graduate Total</b>	<b>17</b>	<b>9</b>	<b>18</b>	<b>10</b>	<b>14</b>
<b>Music Education Total</b>	<b>68</b>	<b>43</b>	<b>69</b>	<b>68</b>	<b>66</b>

<b>Music Theory, History and Comp</b>	<b>2012-13</b>	<b>2013-14</b>	<b>2014-15</b>	<b>2015-16</b>	<b>2016-17</b>
Music: Elective Studies BM	8	5	6	7	7
Music: Theory & Composition BM	7	4	5	1	8
Music: History BM					1
<b>Music, Theory, History and Comp Undergraduate Total</b>	<b>15</b>	<b>9</b>	<b>11</b>	<b>8</b>	<b>16</b>
Music History MA	1			2	
Music: History and Literature		1			
Music: Theory & Composition MM		1	4	2	1
<b>Music, Theory, History and Comp Graduate Total</b>	<b>1</b>	<b>2</b>	<b>4</b>	<b>4</b>	<b>1</b>
<b>Music Theory, History and Comp Total</b>	<b>16</b>	<b>11</b>	<b>15</b>	<b>12</b>	<b>17</b>
<b>School of Music Undergraduate Total</b>	<b>90</b>	<b>64</b>	<b>77</b>	<b>88</b>	<b>100</b>
<b>School of Music Graduate Total</b>	<b>26</b>	<b>27</b>	<b>37</b>	<b>28</b>	<b>28</b>
<b>School of Music Total</b>	<b>116</b>	<b>91</b>	<b>114</b>	<b>116</b>	<b>128</b>

## College of Business & Public Management

### Criminal Justice

Criminal Justice BS	108	103	109	120	142
Criminal Justice BS (Phila)				1	9
Criminal Justice BS Accel					6
Criminal Justice BS Phila Accel					1
<b>Criminal Justice Undergraduate Total</b>	<b>108</b>	<b>103</b>	<b>109</b>	<b>121</b>	<b>158</b>
Criminal Justice MS	18	16	19	15	12
Criminal Justice MS (Phila)			2	3	5
<b>Criminal Justice Graduate Total</b>	<b>18</b>	<b>16</b>	<b>21</b>	<b>18</b>	<b>17</b>
<b>Criminal Justice Total</b>	<b>126</b>	<b>119</b>	<b>130</b>	<b>139</b>	<b>175</b>

## Geography & Planning

	2012-13	2013-14	2014-15	2015-16	2016-17
Geography BA	7	2	2	6	1
Geography: Environmental	4	3	4	3	11
Geography:GIS BA	4	8	2	1	8
Geography:Urban/Regional PI BA	2	6	2	12	2
Urban & Environmental Plan BS					5
<b>Geography &amp; Planning Undergraduate Total</b>	<b>17</b>	<b>19</b>	<b>10</b>	<b>22</b>	<b>27</b>
Geography MS	9	12	14	8	10
Regional Planning MPA	1				
<b>Geography &amp; Planning Graduate Total</b>	<b>10</b>	<b>12</b>	<b>14</b>	<b>8</b>	<b>10</b>
<b>Geography &amp; Planning Total</b>	<b>27</b>	<b>31</b>	<b>24</b>	<b>30</b>	<b>37</b>

## Public Policy and Administration

Human Resource Mgmt. MPA	8	9	9	15	7
Human Resource Mgmt. MSA	2		1		
Long-Term Hlth Care MSA	1				
Nonprofit Administration MPA	3	4	11	11	5
Public Administration MPA	37	40	30	32	20
Sport & Athletic Admin MSA	1				
Sport Mgt & Athletics MPA	1				
Training & Developmt MSA	1				
<b>Public Policy and Administration Graduate Total</b>	<b>54</b>	<b>53</b>	<b>51</b>	<b>58</b>	<b>32</b>
Doctor of Public Administration					6
<b>Public Policy and Administration Doctorate Total</b>	<b>0</b>	<b>0</b>	<b>0</b>	<b>0</b>	<b>6</b>
<b>Public Policy and Administration Total</b>	<b>54</b>	<b>53</b>	<b>51</b>	<b>58</b>	<b>38</b>

## Accounting

Accounting BS	75	95	98	106	138
<b>Accounting Undergraduate Total</b>	<b>75</b>	<b>95</b>	<b>98</b>	<b>106</b>	<b>138</b>
<b>Accounting Total</b>	<b>75</b>	<b>95</b>	<b>98</b>	<b>106</b>	<b>138</b>

## Economics

	2012-13	2013-14	2014-15	2015-16	2016-17
Economics BS	36	36	42	58	75
Finance BS	119	128	168	199	230
<b>Economics Undergraduate Total</b>	<b>155</b>	<b>164</b>	<b>210</b>	<b>257</b>	<b>305</b>
<b>Economics Total</b>	<b>155</b>	<b>164</b>	<b>210</b>	<b>257</b>	<b>305</b>

## Management

Business Management BS	133	152	155	170	222
International Business BS					1
<b>Management Undergraduate Total</b>	<b>133</b>	<b>152</b>	<b>155</b>	<b>170</b>	<b>223</b>
<b>Management Total</b>	<b>133</b>	<b>152</b>	<b>155</b>	<b>170</b>	<b>223</b>

## Marketing

Marketing BS	118	130	139	173	200
<b>Marketing Undergraduate Total</b>	<b>118</b>	<b>130</b>	<b>139</b>	<b>173</b>	<b>200</b>
<b>Marketing Total</b>	<b>118</b>	<b>130</b>	<b>139</b>	<b>173</b>	<b>200</b>

## MBA Program

Bus Admin: General MBA	24	22	40	41	78
<b>MBA Program Graduate Total</b>	<b>24</b>	<b>22</b>	<b>40</b>	<b>41</b>	<b>78</b>
<b>MBA Program Total</b>	<b>24</b>	<b>22</b>	<b>40</b>	<b>41</b>	<b>78</b>
<b>College of Business &amp; Public Management Undergraduate Total</b>	<b>606</b>	<b>663</b>	<b>721</b>	<b>849</b>	<b>1051</b>
<b>College of Business &amp; Public Management Graduate Total</b>	<b>106</b>	<b>103</b>	<b>126</b>	<b>125</b>	<b>137</b>
<b>College of Business &amp; Public Management Doctorate Total</b>	<b>-</b>	<b>-</b>	<b>-</b>	<b>-</b>	<b>6</b>
<b>College of Business &amp; Public Management Total</b>	<b>712</b>	<b>766</b>	<b>847</b>	<b>974</b>	<b>1,194</b>

## College of Education & Social Work

### Counselor Education

	2012-13	2013-14	2014-15	2015-16	2016-17
Couns: Higher Ed/Stu Aff MS	24	36	33	34	28
Counseling: Elementary MED	19	49	1		
Counseling: School MED			43	44	51
Counseling: Secondary MED	40	49	1		
<b>Counselor Education Graduate Total</b>	<b>83</b>	<b>134</b>	<b>78</b>	<b>78</b>	<b>79</b>
<b>Counselor Education Total</b>	<b>83</b>	<b>134</b>	<b>78</b>	<b>78</b>	<b>79</b>

### Early and Middle Grades Ed.

Early Childhood Educ BSED	12				
Early Grades Prep, PK-4 BSED	146	225	243	180	204
Elementary Education BSED	35	1			

### Early and Middle Grades Ed. Continued...

Middle Grades Prep, 4-8 BSED	26	82	62	44	53
<b>Early and Middle Grades Ed. Undergraduate Total</b>	<b>219</b>	<b>308</b>	<b>305</b>	<b>224</b>	<b>257</b>
App Stud Teach/Lear MED (sprf)				2	20
Applied Studies Teach/Lear MED	16	11	11	12	18
Early Childhood Education MED	1	17		10	23
<b>Early and Middle Grades Ed. Graduate Total</b>	<b>17</b>	<b>28</b>	<b>11</b>	<b>24</b>	<b>61</b>
<b>Early and Middle Grades Ed. Total</b>	<b>236</b>	<b>336</b>	<b>316</b>	<b>248</b>	<b>318</b>

### Literacy

Reading MED	67	45	29	29	31
<b>Literacy Graduate Total</b>	<b>67</b>	<b>45</b>	<b>29</b>	<b>29</b>	<b>31</b>
<b>Literacy Total</b>	<b>67</b>	<b>45</b>	<b>29</b>	<b>29</b>	<b>31</b>

### Educational Foundations and Policy Studies

Secondary Education MED	15	9	4	7	1
MS Transf Edu & Soc Change					4
<b>Educational Foundations and Policy Studies Graduate Total</b>	<b>15</b>	<b>9</b>	<b>4</b>	<b>7</b>	<b>5</b>
<b>Educational Foundations and Policy Studies Total</b>	<b>15</b>	<b>9</b>	<b>4</b>	<b>7</b>	<b>5</b>

<b>Special Education</b>	<b>2012-13</b>	<b>2013-14</b>	<b>2014-15</b>	<b>2015-16</b>	<b>2016-17</b>
Special Education BSED	28				
Special Education: 7-12 BSED	1	7	5	10	9
Special Education: PK-8 BSED	33	87	130	105	102
<b>Special Education Undergraduate Total</b>	<b>62</b>	<b>94</b>	<b>135</b>	<b>115</b>	<b>111</b>
Special Education MED	30	17	11	12	9
Special Education MED (online)		7	8	26	34
Special Education MED (Phila)			2	1	
<b>Special Education Graduate Total</b>	<b>30</b>	<b>24</b>	<b>21</b>	<b>39</b>	<b>43</b>
<b>Special Education Total</b>	<b>92</b>	<b>118</b>	<b>156</b>	<b>154</b>	<b>154</b>

### **Social Work**

Social Work BSW	56	47	39	30	53
Social Work BSW (Phila)				5	10
<b>Social Work Undergraduate Total</b>	<b>56</b>	<b>47</b>	<b>39</b>	<b>35</b>	<b>63</b>
Social Work MSW	53	54	57	48	44
Social Work MSW (Phila)				19	22
Social Work MSW Advanced Stand			17	13	13
Social Work MSW, Advanced Stand, Phila					1
<b>Social Work Graduate Total</b>	<b>53</b>	<b>54</b>	<b>74</b>	<b>80</b>	<b>80</b>
<b>Social Work Total</b>	<b>109</b>	<b>101</b>	<b>113</b>	<b>115</b>	<b>143</b>
<b>College of Education &amp; Social Work Undergraduate Total</b>	<b>337</b>	<b>449</b>	<b>479</b>	<b>374</b>	<b>431</b>
<b>College of Education &amp; Social Work Graduate Total</b>	<b>265</b>	<b>294</b>	<b>217</b>	<b>257</b>	<b>299</b>
<b>College of Education &amp; Social Work Total</b>	<b>602</b>	<b>743</b>	<b>696</b>	<b>631</b>	<b>730</b>

### **College of Health Sciences**

#### **Communicative Disorders**

Communication Sci & Disord BA	59	75	90	89	92
<b>Communicative Disorders Undergraduate Total</b>	<b>59</b>	<b>75</b>	<b>90</b>	<b>89</b>	<b>92</b>
Speech-Language Pathology MA	28	27	27	27	26
<b>Communicative Disorders Graduate Total</b>	<b>28</b>	<b>27</b>	<b>27</b>	<b>27</b>	<b>26</b>
<b>Communicative Disorders Total</b>	<b>87</b>	<b>102</b>	<b>117</b>	<b>116</b>	<b>118</b>

<b>Kinesiology</b>	2012-13	2013-14	2014-15	2015-16	2016-17
Exercise Science BS	37	44	47	40	60
Health & Physical Educ BS	80	60	47	21	18
Pre-Chiropractic BS		3	1		2
Pre-Occupational Therapy BS	14	26	28	44	60
Pre-Physical Therapy BS	34	55	44	61	71
<b>Kinesiology Undergraduate Total</b>	<b>165</b>	<b>188</b>	<b>167</b>	<b>166</b>	<b>211</b>
HLth&Phys Ed: Exercise Phys MS	10	3	1		1
MS in Ex Sport Phys: Athl Trng	2	6	6	8	7
MS in Exercise/Sport Physiolog	2	4	7	15	5
MS in Physical Education	1	1			
<b>Kinesiology Graduate Total</b>	<b>15</b>	<b>14</b>	<b>14</b>	<b>23</b>	<b>13</b>
<b>Kinesiology Total</b>	<b>180</b>	<b>202</b>	<b>181</b>	<b>189</b>	<b>224</b>

### **Nutrition**

Nutrition and Dietetics BS	103	115	140	151	115
Nutrition and Dietetics BS Accel					22
<b>Nutrition Undergraduate Total</b>	<b>103</b>	<b>115</b>	<b>140</b>	<b>151</b>	<b>137</b>
Public Health MPH: Nutrition	14	16	18	30	14
Community Nutrition MS					3
<b>Nutrition Graduate Total</b>	<b>14</b>	<b>16</b>	<b>18</b>	<b>30</b>	<b>17</b>
<b>Nutrition Total</b>	<b>117</b>	<b>131</b>	<b>158</b>	<b>181</b>	<b>154</b>

### **Sports Medicine Department**

<b>Athletic Training BS</b>	32	41	42	42	36
<b>Sports Medicine Department Undergraduate Total</b>	<b>32</b>	<b>41</b>	<b>42</b>	<b>42</b>	<b>36</b>
<b>Sports Medicine Department Total</b>	<b>32</b>	<b>41</b>	<b>42</b>	<b>42</b>	<b>36</b>

### **Nursing**

Nursing BSN	74	57	30	53	50
Nursing BSN: 2nd degree	1	26	39	32	30
Nursing BSN: RN	84	63	73	42	44
Nursing BSN: RN (Phila)					30
<b>Nursing Undergraduate Total</b>	<b>159</b>	<b>146</b>	<b>142</b>	<b>127</b>	<b>154</b>



### Nursing Continued...

	2012-13	2013-14	2014-15	2015-16	2016-17
Nursing MSN	17	6	7	3	1
Public Hlth Nursing MSN: Admin		2	3	1	
Public Hlth Nursing MSN: Integ		1			
<b>Nursing Graduate Total</b>	<b>17</b>	<b>9</b>	<b>10</b>	<b>4</b>	<b>1</b>
Doctor of Nursing Practice					21
<b>Nursing Doctorate Total</b>					<b>21</b>
<b>Nursing Total</b>	<b>176</b>	<b>155</b>	<b>152</b>	<b>131</b>	<b>176</b>

### Health

Environmental Health BS	7	8	9	25	14
Health Sci: General BS	17	14	17	20	22
Hlth Sci: Respiratory Care BS	27	22	25	25	20
Public Health	22	38	37	56	51
<b>Health Undergraduate Total</b>	<b>73</b>	<b>82</b>	<b>88</b>	<b>126</b>	<b>107</b>
Health: School Health MED	12	9	8	4	9
Public Health MPH: Community	40	36	28	36	37
Public Health MPH: Environment	6	2	5	7	6
Public Health MPH: Integrative	9	2	10	1	
Public Health MPH: Management	8	14	21	16	23
Public Health MPH:Admin	12	1			
<b>Health Graduate Total</b>	<b>87</b>	<b>64</b>	<b>72</b>	<b>64</b>	<b>75</b>
<b>Health Total</b>	<b>160</b>	<b>146</b>	<b>160</b>	<b>190</b>	<b>182</b>
<b>College of Health Sciences Undergraduate Total</b>	<b>591</b>	<b>647</b>	<b>669</b>	<b>701</b>	<b>737</b>
<b>College of Health Sciences Graduate Total</b>	<b>161</b>	<b>130</b>	<b>141</b>	<b>148</b>	<b>132</b>
<b>College of Health Sciences Doctorate Total</b>	<b>-</b>	<b>-</b>	<b>-</b>	<b>-</b>	<b>21</b>
<b>College of Health Sciences Total</b>	<b>752</b>	<b>777</b>	<b>810</b>	<b>849</b>	<b>890</b>

## College of Sciences & Mathematics

### Anthropology & Sociology

	2012-13	2013-14	2014-15	2015-16	2016-17
Anthropology BA	20	12	20	7	17
Sociology BA	51	59	43	43	26
<b>Anthropology &amp; Sociology Undergraduate Total</b>	<b>71</b>	<b>71</b>	<b>63</b>	<b>50</b>	<b>43</b>
<b>Anthropology &amp; Sociology Total</b>	<b>71</b>	<b>71</b>	<b>63</b>	<b>50</b>	<b>43</b>

### Biology

Biology BA		1	1	1	
Biology BS	42	23	46	51	49
Biology BSED	7	8	6	5	2
Biology: Cell & Molecular BS	13	21	33	33	37
Biology: Ecology/Conserv BS	9	9	11	10	8
Biology: Marine Science			3	4	7
Biology: Medical Technology BS	3	2	2	3	1
Biology: Microbiology BS	10	11	8	9	13
<b>Biology Undergraduate Total</b>	<b>84</b>	<b>75</b>	<b>110</b>	<b>116</b>	<b>117</b>
Biology : Thesis MS	7	4	1	5	6
Biology MS	8	6	7	3	4
<b>Biology Graduate Total</b>	<b>15</b>	<b>10</b>	<b>8</b>	<b>8</b>	<b>10</b>
<b>Biology Total</b>	<b>99</b>	<b>85</b>	<b>118</b>	<b>124</b>	<b>127</b>

### Chemistry

Biochemistry BS	9	4	5	8	4
Chemistry BS	12	12	13	15	18
Chemistry BSED	4	1	2		1
Chemistry-Biology BS	13	12	9	12	17
Foren & Toxicol Chemistry BS	11	11	9	3	5
<b>Chemistry Undergraduate Total</b>	<b>49</b>	<b>40</b>	<b>38</b>	<b>38</b>	<b>45</b>
<b>Chemistry Total</b>	<b>49</b>	<b>40</b>	<b>38</b>	<b>38</b>	<b>45</b>

**College of Sciences & Mathematics Continued...**  
**Computer Science**

	2012-13	2013-14	2014-15	2015-16	2016-17
Computer Science BS	23	45	27	47	57
<b>Computer Science Undergraduate Total</b>	<b>23</b>	<b>45</b>	<b>27</b>	<b>47</b>	<b>57</b>
Computer Science MS	5	6	13	16	17
<b>Computer Science Graduate Total</b>	<b>5</b>	<b>6</b>	<b>13</b>	<b>16</b>	<b>17</b>
<b>Computer Science Total</b>	<b>28</b>	<b>51</b>	<b>40</b>	<b>63</b>	<b>74</b>

**Geology & Astronomy**

Earth-Space Science BSED	7	4	4	2	3
Geoscience : Earth Systems BS	13	11	17	15	8
Geoscience: Geology BS	4	8	5	12	24
Geoscience: Geology Accel					1
<b>Geology &amp; Astronomy Undergraduate Total</b>	<b>24</b>	<b>23</b>	<b>26</b>	<b>29</b>	<b>36</b>
Geoscience MA	6	11	7	11	
Geoscience MS				7	10
<b>Geology &amp; Astronomy Graduate Total</b>	<b>6</b>	<b>11</b>	<b>7</b>	<b>18</b>	<b>10</b>
<b>Geology &amp; Astronomy Total</b>	<b>30</b>	<b>34</b>	<b>33</b>	<b>47</b>	<b>46</b>

**Mathematics**

Mathematics BA	8	4	3		4
Mathematics BSED	14	24	26	21	20
Mathematics: Actuarial Sci BS	3	15	15	14	21
Mathematics: Computational BS	4	1	3	1	1
Mathematics: Finance BS	2	6	6	5	6
Mathematics: Applied & Comp BS	2	1	3	1	2
Mathematics: Pure Mathematics		1	3	1	3
Mathematics: Statistics BS	13	5	13	13	11
<b>Mathematics Undergraduate Total</b>	<b>46</b>	<b>57</b>	<b>72</b>	<b>56</b>	<b>68</b>
Applied Statistics MS	24	22	25	33	30
Mathematics MA	5	14	9	6	11
<b>Mathematics Graduate Total</b>	<b>29</b>	<b>36</b>	<b>34</b>	<b>39</b>	<b>41</b>
<b>Mathematics Total</b>	<b>75</b>	<b>93</b>	<b>106</b>	<b>95</b>	<b>109</b>

## College of Sciences & Mathematics Continued...

### Pharmaceutical Product Dev.

	2012-13	2013-14	2014-15	2015-16	2016-17
Pharmaceutical Product Dev BS	14	11	14	16	17
<b>Pharmaceutical Product Dev. Undergraduate Total</b>	<b>14</b>	<b>11</b>	<b>14</b>	<b>16</b>	<b>17</b>
<b>Pharmaceutical Product Dev. Total</b>	<b>14</b>	<b>11</b>	<b>14</b>	<b>16</b>	<b>17</b>

### Physics

Physics BS	8	5	4	4	15
Physics BSED	2	1	4		1
Physics-Engineering BS	1	3	3	1	5
<b>Physics Undergraduate Total</b>	<b>11</b>	<b>9</b>	<b>11</b>	<b>5</b>	<b>21</b>
<b>Physics Total</b>	<b>11</b>	<b>9</b>	<b>11</b>	<b>5</b>	<b>21</b>

### Political Science

Poli Sci:Applied Pub Policy BA	10	4	6	8	6
Polit Sci : Int'l Relations BA	15	23	22	23	24
Political Sci. Gov. and Pol.	37	61	43	38	32
<b>Political Science Undergraduate Total</b>	<b>62</b>	<b>88</b>	<b>71</b>	<b>69</b>	<b>62</b>
<b>Political Science Total</b>	<b>62</b>	<b>88</b>	<b>71</b>	<b>69</b>	<b>62</b>

### Psychology

Psychology BA	186	212	258	249	231
<b>Psychology Undergraduate Total</b>	<b>186</b>	<b>212</b>	<b>258</b>	<b>249</b>	<b>231</b>
Psychology: Clinical MA	24	16	11	19	28
Psychology: General MA	4	1	7	4	2
Psychology: Industrial MA	11	20	20	10	17
<b>Psychology Graduate Total</b>	<b>39</b>	<b>37</b>	<b>38</b>	<b>33</b>	<b>47</b>
<b>Psychology Total</b>	<b>225</b>	<b>249</b>	<b>296</b>	<b>282</b>	<b>278</b>
<b>College of Science &amp; Mathematics Undergraduate Total</b>	<b>570</b>	<b>631</b>	<b>690</b>	<b>675</b>	<b>697</b>
<b>College of Science &amp; Mathematics Graduate Total</b>	<b>94</b>	<b>100</b>	<b>100</b>	<b>114</b>	<b>125</b>
<b>College of Sciences &amp; Mathematics Total</b>	<b>664</b>	<b>731</b>	<b>790</b>	<b>789</b>	<b>822</b>

## School of Interdisciplinary & Graduate Studies

### School of Interdisciplinary Studies

#### Liberal Studies Program

	2012-13	2013-14	2014-15	2015-16	2016-17
Liberal Studies: Arts & Sci BA	45	22	30	22	17
Liberal Studies: Sci/Math BS	12	6	9	13	8
<b>Liberal Studies Program Undergraduate Total</b>	<b>57</b>	<b>28</b>	<b>39</b>	<b>35</b>	<b>25</b>
<b>Liberal Studies Program Total</b>	<b>57</b>	<b>28</b>	<b>39</b>	<b>35</b>	<b>25</b>

#### Professional Studies Prog

Liberal Studies: Profession BS	206	240	214	203	181
<b>Professional Studies Prog Undergraduate Total</b>	<b>206</b>	<b>240</b>	<b>214</b>	<b>203</b>	<b>181</b>
<b>Professional Studies Prog Total</b>	<b>206</b>	<b>240</b>	<b>214</b>	<b>203</b>	<b>181</b>
<b>School of Interdisciplinary Studies Total</b>	<b>263</b>	<b>268</b>	<b>253</b>	<b>238</b>	<b>206</b>
<b>School of Interdisciplinary &amp; Graduate Studies Undergradaute Total</b>	<b>263</b>	<b>268</b>	<b>253</b>	<b>238</b>	<b>206</b>
<b>School of Interdisciplinary &amp; Graduate Studies Total</b>	<b>263</b>	<b>268</b>	<b>253</b>	<b>238</b>	<b>206</b>

<b>University Undergraduate Total</b>	<b>2,972</b>	<b>3,232</b>	<b>3,383</b>	<b>3,429</b>	<b>3,708</b>
<b>University Graduate Total</b>	<b>714</b>	<b>740</b>	<b>693</b>	<b>727</b>	<b>768</b>
<b>University Doctorate Total</b>	<b>-</b>	<b>-</b>	<b>-</b>	<b>-</b>	<b>27</b>
<b>Universtiy Total</b>	<b>3,686</b>	<b>3,972</b>	<b>4,076</b>	<b>4,156</b>	<b>4,503</b>



## **TUITION & FEES**

## Tuition and Fees by Semester

Tuition Category	2012-13	2013-14	2014-15	2015-16	2016-17	2017-18
<b>Undergraduate Tuition</b>						
Full-Time In-State	\$ 3,214.00	\$ 3,311.00	\$ 3,410.00	\$ 3,530.00	\$ 3,619.00	\$ 3,746.00
Full-Time Out-of-State	\$ 8,035.00	\$ 8,278.00	\$ 8,525.00	\$ 8,825.00	\$ 9,048.00	\$ 9,365.00
Per Credit In-State	\$ 268.00	\$ 276.00	\$ 284.00	\$ 294.00	\$ 302.00	\$ 312.00
Per Credit Out-of-State	\$ 670.00	\$ 690.00	\$ 710.00	\$ 735.00	\$ 754.00	\$ 780.00
<b>Undergraduate Fees</b>						
Full-Time In-State	\$ 1,096.05	\$ 1,114.00	\$ 1,161.90	\$ 1,200.78	\$ 1,241.20	\$ 1,309.33
Full-Time Out-of-State	\$ 1,188.05	\$ 1,209.00	\$ 1,271.90	\$ 1,314.78	\$ 1,358.20	\$ 1,430.33
Per Credit In-State	\$ 91.41	\$ 92.00	\$ 97.24	\$ 100.90	\$ 103.76	\$ 109.77
Per Credit Out-of-State	\$ 99.41	\$ 100.00	\$ 106.24	\$ 109.90	\$ 113.76	\$ 119.77
<b>Graduate Tuition</b>						
Full-Time In-State	\$ 3,861.00	\$ 3,978.00	\$ 4,086.00	\$ 4,230.00	\$ 4,347.00	\$ 4,500.00
Full-Time Out-of-State	\$ 5,796.00	\$ 5,967.00	\$ 6,129.00	\$ 6,345.00	\$ 6,525.00	\$ 6,750.00
Per Credit In-State	\$ 429.00	\$ 442.00	\$ 454.00	\$ 470.00	\$ 483.00	\$ 500.00
Per Credit Out-of-State	\$ 644.00	\$ 663.00	\$ 681.00	\$ 705.00	\$ 725.00	\$ 750.00
<b>Graduate Fees*</b>						
Full-Time In-State	\$ 1,054.40	\$ 1,067.00	\$ 1,115.25	\$ 1,156.13	\$ 1,199.55	\$ 1,479.65
Full-Time Out-of-State	\$ 1,144.40	\$ 1,157.00	\$ 1,223.25	\$ 1,264.13	\$ 1,307.55	\$ 1,587.65
Per Credit In-State	\$ 105.05	\$ 106.00	\$ 110.78	\$ 114.75	\$ 119.05	\$ 149.79
Per Credit Out-of-State	\$ 115.05	\$ 116.00	\$ 122.78	\$ 126.75	\$ 131.05	\$ 161.79
<b>Residence Halls</b>						
<b>Meal Plan**</b>	\$ 1,247.00	\$ 1,272.00	\$ 1,293.00	\$ 1,326.57	\$ 1,396.54	\$ 1,471.00

\*For information about special graduate program rates, and tuition & fees for Doctoral and Philadelphia campus programs please visit [http://www.wcupa.edu/\\_information/afa/fiscal/bursar/tuition.asp](http://www.wcupa.edu/_information/afa/fiscal/bursar/tuition.asp) .

\*\*14 Meals per week + \$250 Flex Dollars.

For detail information on meal plans please visit [http://wcupa.edu/\\_information/afa/fiscal/bursar/tuition.asp#MealPlans](http://wcupa.edu/_information/afa/fiscal/bursar/tuition.asp#MealPlans) .



## **LIBRARY RESOURCES**



## Library Statistics

### FY 2013-2014 through 2016-2017

<b>Holdings</b>	<b>2013-2014</b>	<b>2014-2015</b>	<b>2015-2016</b>	<b>2016-2017</b>	<b>One Year Difference</b>
<b>Library Holdings</b>					
Volumes	758,344	745,645	737,705	719,762	<b>-17,943</b>
Microforms	926,596	926,629	768,407	768,443	<b>36</b>
E-Books	844,919	766,280	1,011,265	1,011,585	<b>320</b>
Audio/Video units*	255,249	835,363	834,616	1,098,632	<b>264,016</b>
<b>Circulation (General &amp; Reserve)</b>	<b>68,218</b>	<b>63,802</b>	<b>58,402</b>	<b>51,364</b>	<b>-7,038</b>
<b>Holdings Total</b>	<b>2,905,718</b>	<b>3,408,323</b>	<b>3,418,006</b>	<b>3,400,916</b>	<b>-17,090</b>
<b>Total FTE Staff (includes student assistants)</b>	<b>49.13</b>	<b>50.37</b>	<b>47.87</b>	<b>47.00</b>	<b>-0.87</b>

\*Includes tapes, CDs, DVDs

<b>Other Library Materials</b>	<b>2015-2016</b>	<b>2016-2017</b>
Items Digitized by WCU Library	7,563	10,077
Digital Art Images	2,609,072	N/A
Digital Pamphlets, Reports, etc.	2,953,055	N/A
Digital Manuscript Pages	6,480,000	N/A

For questions /comments or recommendations for other data to include in the Fact Book, please contact Nilima Inamdar, Office of Institutional Research, WCU, 887, Matlack Street, West Chester PA 19381. Email: [ninamdar@wcupa.edu](mailto:ninamdar@wcupa.edu) Phone: 610-436-2456.