

FACT BOOK 2017

WEST CHESTER UNIVERSITY OF PENNSYLVANIA

West Chester University of Pennsylvania Office of Institutional Research

**887 South Matlack Street
West Chester, PA 19383
Telephone (610) 436-2835**

Fax (610) 436-2635

Introduction & Acknowledgements

This Fact Book provides some of the most commonly requested information about West Chester University. Much of the information is drawn from the University's database and state mandated reports. Other offices and sources used are cited throughout the document. The cooperation of those offices and sources is much appreciated.

The Fact Book is divided into several chapters: Admissions, Enrollment, Retention/Graduation Rates, Academic Degree Programs & Accredited Programs, Graduation/Degree Information, and Resources (including financial aid), Services and Facilities.

Comments and suggestions about additional information that might be included are much appreciated. Please forward your suggestions to ninamdar@wcupa.edu.

Additional institutional information is available on our website: <http://www.wcupa.edu/infoservices/oir/>

Table of Contents

Table of Contents	2-3
WCU Quick Facts	4
GENERAL INFORMATION	
About the University and Its Mission	6-8
West Chester University Organizational Chart	9
ADMISSIONS	
Undergraduate Admissions Standards	11
Admission Application Statistics	12-13
First Time Full-Time First Year by Gender and Race/Ethnicity	14
First Time Full-Time First Year by Admission Type	15
SAT Score Distribution: Fall 2017	16
SAT Average Scores	17
ACT Score Distribution: Fall 2017	18-19
ACT Average Scores	19
Feeder High Schools: Fall 2017	20
Feeder Colleges: Fall 2017	21
First Time First Year Enrollment by County	22
First Time First Year Enrollment by State	23
First-Time First Year Admission Yield Statistics	24
First-Time First Year Admission Yield Chart	25
First-Time Transfer Admission Yield Statistics	26
First-Time Transfer Admission Yield Chart	27
ENROLLMENT	
Head Count Enrollment by Gender and Race/Ethnicity	29

To be continued.....

Table of Contents (continued)

ENROLLMENT (continued)	
Head Count Enrollment by Degree Status and College Fall 2017	30
Head Count Enrollment by State: Fall 2014 to 2017	31-32
Enrollment by County for Pennsylvania Residents: Fall 2017	33
Head Count Enrollment by Ethnicity and Gender Fall 2013 to Fall 2017	34
Head Count Enrollment by College : Fall 2013 to Fall 2017	35-36
Head Count Enrollment by Student Level: Fall 2012 to 2017	37-38
Credit Hours and Student FTE Enrollment	39-40
RETENTION AND GRADUATION	
Retention & Graduation Rates for First-Time, Full-Time First Year: University Summary	42
Second-Year Retention Rates for First-Time, Full-Time First Year by Race/Ethnicity and by Gender	43
Four and Six-Year Graduation Rates by Race/Ethnicity	44
Four and Six-Year Graduation Rates by Gender	45
ACADEMIC AND DEGREE PROGRAMS	
Undergraduate Degrees and Certificate Programs	47-48
Graduate Degrees and Certificate Programs	49-50
Professional and Program Accreditations	51-52
DEGREES CONFERRED	
Undergraduate and Graduate Degrees Conferred by College and Academic Plan	54-68
RESOURCES, SERVICES & FACILITIES	
Tuition and Fees	70
Library Resources	72

Quick Facts

West Chester University
West Chester, PA 19383
Telephone (610) 436-1000
<http://www.wcupa.edu/>

Founded	1871
President	Christopher M. Fiorentino
University Accreditation	Middle States Commission on Higher Education
Fall 2017 Enrollment*	17,306
Undergraduate	14,451
Graduate	2,855
Fall 2017 Credit Hours	223,862.0
Undergraduate	204,603.0
Graduate	19,259.0
Undergraduate Degree Programs	124
Undergraduate Certificates	6
Undergraduate Non-Degree, Teaching Certification	34
Graduate Degree Programs	98
Master's Programs	94
Doctoral Programs	4
Graduate Certificates	39
Graduate Non-Degree, Teaching Certification, Professional Growth, Letter of Completion	45
Degrees Awarded in 2016-2017	4,503
Bachelor's	3,708
Master's	768
Doctoral	27

*Represent IPEDS unduplicated total headcount. IPEDS unduplicated total headcount is 17,306.

Degree/Non Degree/Certificate etc. program counts displayed above include only those programs which are offered to incoming new students.



General Information

About the University and Its Mission

The West Chester University Mission Statement

West Chester University, a member of the Pennsylvania State System of Higher Education, is a public, regional, comprehensive institution committed to providing access and offering high-quality undergraduate education, select post-baccalaureate and graduate programs, and a variety of educational and cultural resources for its students, alumni, and citizens of southeastern Pennsylvania.

The West Chester University Values Statement

West Chester University is committed to attracting, enrolling, and graduating quality students from a wide variety of educational, cultural, and economic backgrounds. This endeavor requires the University to attract and retain highly qualified faculty and staff and to provide each member of the University community with learning and leadership development opportunities. To this end, the University supports and encourages programs which benefit all people and which seek to eradicate discrimination and injustice. We treasure what we believe to be the highest principles of American society: the worth and uniqueness of each individual, the belief that success is to be earned by individual effort put forth in an environment founded on equality of opportunity, and the appreciation of the ideal of an inclusive society.

We believe that it is incumbent upon all members of our community—staff, students, faculty and administrators—to conduct themselves with civility toward one another at all times. We value the special talents and contributions of each member of our community. We further affirm the worth and dignity of each member and the shared responsibility of all to treat each other as individuals, with respect and courtesy.

As a university owned by the citizens of Pennsylvania, we value our mission to provide the best educational opportunities possible which will enable the University community to successfully address the concerns of a global society. To this end, West Chester University seeks to provide diligent advising for students and to focus on teaching students to think clearly and critically, to make logical and ethical judgments, and to communicate effectively with others.

West Chester University's community strongly supports the principles of academic integrity and academic responsibility, viewing both as the province of every member of the campus community. We hold the highest esteem for teaching directed toward student learning and affirm that mastery of content as well as mastery of teaching skills necessary to communicate such content is paramount.

This values statement is intended to be a living document which will serve West Chester University as it changes and evolves in the coming years.

About West Chester University of Pennsylvania

West Chester University offers bachelors and masters degrees in the arts and sciences, teacher training and certification, advanced study preparation in fields such as medicine and law, education for specific professions, and continuing education.

Total enrollment at West Chester University includes 14,451 undergraduate students and 2,855 graduate students. This represents the IPEDS unduplicated headcount. While most undergraduates are recent high school graduates preparing for career objectives, many others are older individuals, including veterans and homemakers, who either never before had the opportunity for a college education or whose schooling was interrupted.

Most students are residents of Pennsylvania but students from other states and foreign countries are welcome. The student body at West Chester University represents a cross section of many ethnic, racial, and religious groups and includes students from all socioeconomic levels.

Like the world around it, West Chester University is constantly transforming. The school continues to broaden and modify the nature and number of its programs to reflect the needs of its students in their endeavor to prepare themselves for success and fulfillment in life.

The History of West Chester University of Pennsylvania

Founded in 1871, West Chester University began as West Chester Academy, a private, state-aided school that existed from 1812 to 1869. The academy enjoyed strong support from the highly intellectual Chester County Cabinet of the Natural Sciences of the pre-Civil War decades. It was recognized as one of Pennsylvania's leading preparatory schools, and its experience in teacher training laid the groundwork for the normal school years that were to follow.

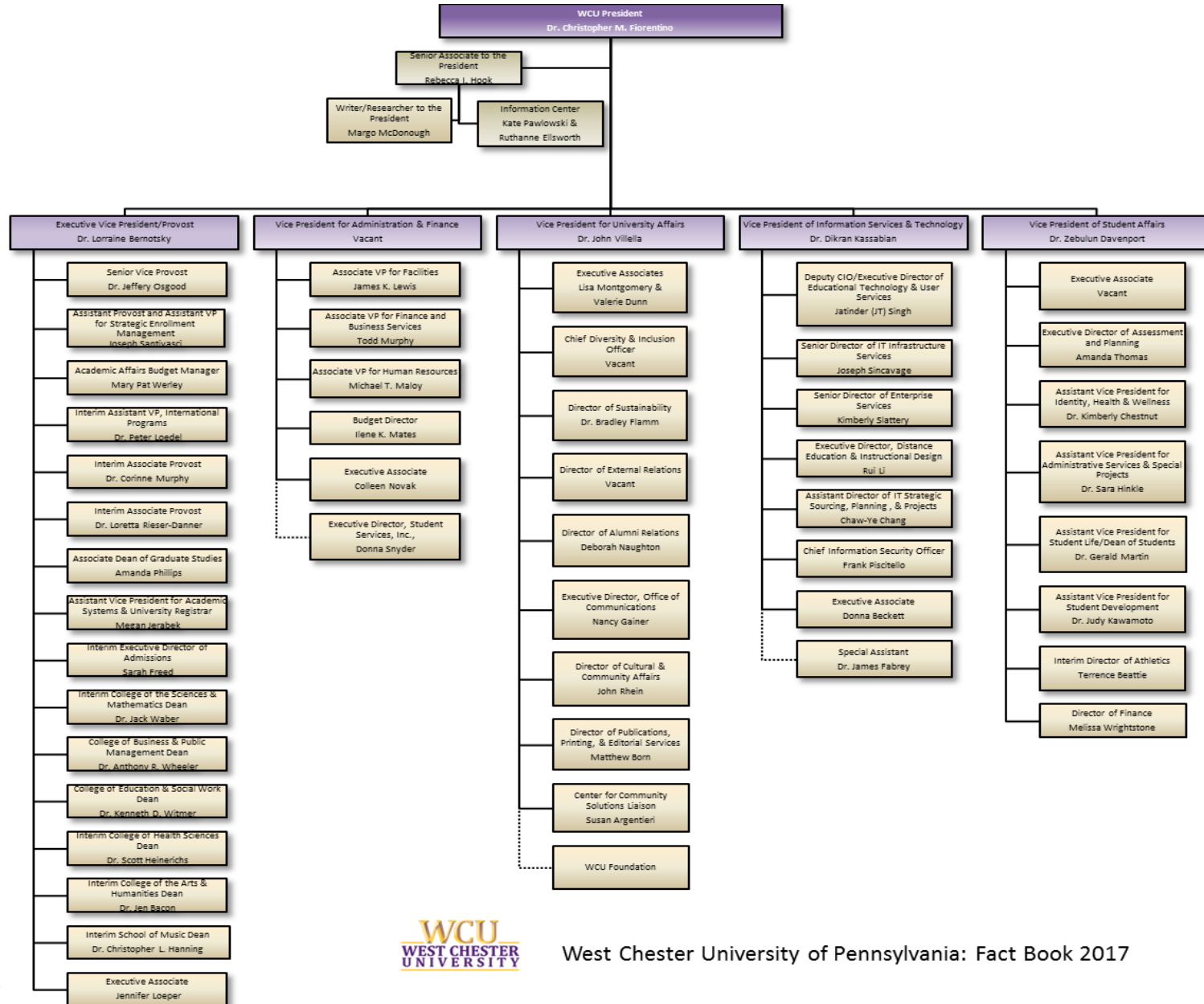
As the state began to take increasing responsibility for public education, the academy was transformed into West Chester Normal School, still privately owned but state certified. The normal school admitted its first class, consisting of 160 students, on September 25, 1871. In 1913, West Chester became the first of the normal schools to be owned outright by the Commonwealth.

West Chester became West Chester State Teachers College in 1927 when Pennsylvania initiated a four-year program of teacher education. In 1960, as the Commonwealth paved the way for liberal arts programs in its college system, West Chester was renamed West Chester State College, and two years later introduced the liberal arts program that turned the one-time academy into a comprehensive college.

In recognition of the historic merit of the campus, in 1981 the West Chester State College Quadrangle Historic District was placed on the National Register of Historic Places. The buildings included in this historic district are Philips Memorial Building, Ruby Jones Hall, Recitation Hall, and the Old Library. Except for Philips, these buildings are all constructed of native Chester County serpentine stone.

West Chester State achieved another major milestone with passage of the State System of Higher Education bill. West Chester became one of the 14 universities in the State System of Higher Education on July 1, 1983. Along with its new name -- West Chester University of Pennsylvania of the State System of Higher Education -- the institution acquired a new system of governance and the opportunity to expand its degree programs.

Organizational Chart



West Chester University of Pennsylvania: Fact Book 2017



ADMISSIONS

Undergraduate Admissions Standards

West Chester University prides itself on the holistic approach used in evaluating applicant credentials. Each application is reviewed individually, and we carefully consider scholastic performance and academic preparation to determine an individual's potential for success.

For general admission, as a first-year student, the Office of Admissions requires successful completion of a college preparatory curriculum in high school. Honors and AP level courses are preferred. Minimum requirements also include a grade point average of 3.4 or better, a minimum combined SAT score of 1120 or better, and rank in the top 40% of the class. It is important to realize that these factors are guidelines for consideration. The academic profile of the first year students who enrolled at West Chester University is a mean SAT combined score of 1128 (scores used for Admission Decision), a rank in the 61st percentile or top 39%, and a grade point average of 3.42.

Applicants who do not meet regular admissions standards may be considered for a special admissions program if appropriate or denied admission and counseled to enroll at another college or university for a minimum of 24 credits before reapplying as a transfer student.

Transfer applicants must have a minimum grade point average of 2.00 for admissions consideration. The majority of our transfers have a Cumulative GPA of 2.50 or better prior to transferring to the University. Some of our academic programs require a higher grade point average and specific course prerequisites. Pennsylvania Community College students who have earned an Associate of Arts or Associate of Science degree and students who have completed 12 or more transferable credits from a State System University with a 2.00 or above have an Academic Passport that provides entry into any university in the State System of Higher Education. For more information on admissions requirements and the Academic Passport, please contact the Office Admissions at (610) 436-3411 or e-mail ugadmiss@wcupa.edu

Admission Application Statistics for First Time, First Year Students Fall 2017

Race/Ethnicity	Fall 2016			Fall 2017			Total	
	Male	Female	Total	Male	Female	Total	Change	% Change
African American								
Applied	586	1,020	1,606	600	1,036	1,636	30	1.87%
Accepted	264	499	763	302	495	797	34	4.46%
Enrolled	94	171	265	102	141	243	-22	-8.30%
Asian								
Applied	153	295	448	154	277	431	-17	-3.79%
Accepted	91	193	284	108	179	287	3	1.06%
Enrolled	15	38	53	24	40	64	11	20.75%
White								
Applied	3,276	5,727	9,003	3,260	5,790	9,050	47	0.52%
Accepted	2,290	3,896	6,186	2,428	4,150	6,578	392	6.34%
Enrolled	723	1,129	1,852	793	1,226	2,019	167	9.02%
Hawaiian/Pacific Islander								
Applied	6	4	10	2	7	9	-1	-10.00%
Accepted	2	2	4	2	2	4	0	0.00%
Enrolled	1	1	2	2	0	2	0	0.00%
Hispanic or Latino								
Applied	280	585	865	319	610	929	64	7.40%
Accepted	154	324	478	194	393	587	109	22.80%
Enrolled	57	91	148	60	99	159	11	7.43%
Multiracial								
Applied	160	296	456	140	245	385	-71	-15.57%
Accepted	98	189	287	98	173	271	-16	-5.57%
Enrolled	43	54	97	40	55	95	-2	-2.06%
Native American								
Applied	8	16	24	11	15	26	2	8.33%
Accepted	1	5	6	4	5	9	3	50.00%
Enrolled	0	0	0	0	3	3	3	-

to be continued.....

These headcounts are unduplicated and reflect the IPEDS unduplicated headcount.

Admission Application Statistics for First Time, First Year Students: Fall 2017 (continued)

Race/Ethnicity	Fall 2016			Fall 2017			Total	
	Male	Female	Total	Male	Female	Total	Change	%Change
Non-Resident Alien								
Applied	16	20	36	9	15	24	-12	-33.33%
Accepted	6	9	15	5	13	18	3	20.00%
Enrolled	1	4	5	1	6	7	2	40.00%
Not Supplied								
Applied	59	97	156	71	106	177	21	13.46%
Accepted	46	58	104	51	75	126	22	21.15%
Enrolled	15	17	32	14	24	38	6	18.75%
Total								
Applied	4,544	8,060	12,604	4,566	8,101	12,667	63	0.50%
Accepted	2,952	5,175	8,127	3,192	5,485	8,677	550	6.77%
Enrolled	949	1,505	2,454	1,036	1,594	2,630	176	7.17%

These headcounts are unduplicated and reflect the IPEDS unduplicated headcount.

First Time, Full Time, First Year Enrolled Students by Gender and Race/Ethnicity: Fall 2017

Race/Ethnicity	Fall 2016			Fall 2017			Total	
	Male	Female	Total	Male	Female	Total	Change	% Change
African American	93	170	263	101	141	242	-21	-7.98%
Asian	15	38	53	23	40	63	10	18.87%
White	720	1,123	1,843	791	1,223	2,014	171	9.28%
Hawaiian/Pacific Islander	1	1	2	2	0	2	0	0.00%
Hispanic or Latino	57	90	147	59	98	157	10	6.80%
Multiracial	43	54	97	40	54	94	-3	-3.09%
Native American	0	0	0	0	3	3	3	-
Non-Resident Alien	1	4	5	1	6	7	2	40.00%
Not Supplied	14	17	31	14	24	38	7	22.58%
Total	944	1,497	2,441	1,031	1,589	2,620	179	7.33%

These headcounts are unduplicated and reflect the IPEDS unduplicated headcount.

First Time, Full Time, First Year Students by Admission Type

Admittance Type	2013		2014		2015		2016		2017	
	N	%	N	%	N	%	N	%	N	%
Regular	1,893	82.6%	1,968	84.0%	1,996	83.8%	1,961	80.3%	2,102	80.2%
ADP ACT 101	73	3.2%	68	2.9%	75	3.1%	69	2.8%	64	2.40%
ADP Non-ACT 101	108	4.7%	112	4.8%	106	4.5%	123	5.0%	116	4.44%
Special Admission	218	9.5%	196	8.4%	204	8.6%	288	11.8%	338	12.9%
Total	2,292		2,344		2,381		2,441		2,620	

These headcounts are unduplicated and reflect the IPEDS unduplicated headcount.

SAT Score Distribution: First Time, First Year Students Fall 2017

SAT- Critical Reading and Writing Distribution

Score	2013		2014		2015		2016		2017	
	N	%	N	%	N	%	N	%	N	%
700-800	84	3.7%	60	2.9%	70	3.3%	60	2.8%	56	2.5%
600-699	963	41.9%	828	39.9%	823	39.3%	725	34.2%	649	28.9%
500-599	1,037	45.2%	1,002	48.3%	974	46.5%	1,083	51.1%	1,290	57.4%
400-499	208	9.1%	171	8.2%	218	10.4%	241	11.4%	239	10.6%
300-399	4	0.2%	14	0.7%	11	0.5%	10	0.5%	12	0.5%
200-299	0	0.0%	0	0.0%	0	0.0%	0	0.0%	0	0.0%
Total	2,296	100%	2,075	100%	2,096	100%	2,119	100%	2,246	100%

SAT- Mathematics Distribution

Score	2013		2014		2015		2016		2017	
	N	%	N	%	N	%	N	%	N	%
700-800	95	4.1%	73	3.5%	74	3.5%	55	2.6%	47	2.1%
600-699	672	29.3%	548	26.4%	523	25.0%	481	22.7%	551	24.5%
500-599	1,306	56.9%	1,235	59.5%	1,249	59.6%	1,296	61.2%	1,306	58.1%
400-499	202	8.8%	192	9.3%	223	10.6%	265	12.5%	332	14.8%
300-399	21	0.9%	27	1.3%	27	1.3%	22	1.04%	10	0.45%
200-299	0	0.0%	0	0.0%	0	0.0%	0	0.0%	0	0.0%
Total	2,296	100%	2,075	100%	2,096	100%	2,119	100%	2,246	100%

Fall 2013 through Fall 2016 old SAT scores have been converted to new SAT scores.

If student supplied old SAT scores in Fall 2017, scores were converted to new SAT scores.

Fall 2013 includes ACT scores which were used for admission decision. ACT Scores were converted to new SAT scores.

These headcounts are unduplicated and reflect the IPEDS unduplicated headcount.

SAT Score Distribution: First Time, First Year Students Fall 2017 (continued)

SAT Average Scores - Old SAT Scale

	Critical Reading			Mathematics			Writing			Combined**		
	WCU	PA	US	WCU	PA	US	WCU	PA	US	WCU	PA	US
Fall 2013	534	494	496	545	504	514	528	482	488	1,079	998	1,010
Fall 2014*	532	497	497	542	504	513	524	480	487	1,074	1001	1,010
Fall 2015*	530	499	495	536	504	511	520	482	484	1,067	1,003	1,006
Fall 2016*	525	500	494	529	506	508	512	481	482	1,054	1,006	1,002

*Includes only scores used for admission decision.

**Combined Critical Reading and Mathematics scores.

Scores above use the old SAT scale.

SAT Average Scores - New SAT Scale

	Critical Reading and Writing			Mathematics			Combined**		
	WCU	PA	US	WCU	PA	US	WCU	PA	US
Fall 2017*	567	540	533	556	531	527	1,122	1,071	1,060

*Includes only scores used for admission decision.

**Combined Critical Reading and Mathematics scores.

Fall 2017 scores above have been converted to new SAT scores.

SAT Average Scores - New SAT Scale

	Critical Reading and Writing	Mathematics	Combined**
	WCU	WCU	WCU
Fall 2013	586	571	1,157
Fall 2014*	584	569	1,152
Fall 2015*	580	564	1,144
Fall 2016*	573	557	1,131
Fall 2017*	567	556	1,122

*Includes only scores used for admission decision.

**Combined Critical Reading and Mathematics scores.

All SAT averages in the chart above have been converted to new SAT scores.

ACT Score Distribution: First Time, First Year Students Fall 2017

ACT- English Distribution

Score	2016		2017	
	N	%	N	%
1-10	0	0.0%	0	0.0%
11-20	84	25.61%	86	23.12%
21-30	229	69.82%	260	69.89%
31-36	15	4.57%	26	6.99%
Total	328	100%	372	100%

ACT- Math Distribution

Score	2016		2017	
	N	%	N	%
1-10	0	0.0%	0	0.0%
11-20	97	29.57%	123	33.06%
21-30	223	67.99%	243	65.32%
31-36	8	2.44%	6	1.61%
Total	328	100%	372	100%

ACT- Reading Distribution

Score	2016		2017	
	N	%	N	%
1-10	0	0.0%	0	0.0%
11-20	72	22.0%	56	15.1%
21-30	208	63.4%	254	68.3%
31-36	48	14.6%	62	16.7%
Total	328	100%	372	100%

ACT- Science Distribution

Score	2016		2017	
	N	%	N	%
1-10	0	0.0%	0	0.0%
11-20	71	21.6%	61	16.4%
21-30	243	74.1%	297	79.8%
31-36	14	4.3%	14	3.8%
Total	328	100%	372	100%

Starting Fall 2015, ACT scores are used for admission decision.

Above tables display only scores used for admission decision.

These headcounts are unduplicated and reflect the IPEDS unduplicated headcount.

ACT Score Distribution: First Time, First Year Students Fall 2017 (continued)

ACT- Composite Distribution

Score	2016		2017	
	N	%	N	%
1-10	0	0.0%	0	0.0%
11-20	69	21.0%	63	16.9%
21-30	251	76.5%	298	80.1%
31-36	8	2.4%	11	3.0%
Total	328	100%	372	100%

ACT Average Scores

	English			Math			Reading		
	WCU	PA	US	WCU	PA	US	WCU	PA	US
Fall 2015	23.1	22.5	20.4	22.6	22.8	20.8	24.3	23.2	21.4
Fall 2016	22.9	22.6	20.1	22.6	23.0	20.6	24.3	23.6	21.3
Fall 2017	23.4	23.4	20.3	22.5	23.4	20.7	25.2	24.2	21.4

	Science			Composite		
	WCU	PA	US	WCU	PA	US
Fall 2015	23.1	22.5	20.9	23.3	22.9	21.0
Fall 2016	23.3	22.8	20.8	23.3	23.1	20.8
Fall 2017	23.6	23.3	21.0	23.6	23.7	21.0

Starting Fall 2015, ACT scores are used for admission decision.

Above tables display only scores used for admission decision.

These headcounts are unduplicated and reflect the IPEDS unduplicated headcount.

Feeder High Schools: Fall 2017

Pennsylvania High Schools With the Most Number of Entering First Year Students

<i>School</i>	<i>#</i>
Downingtown High School East	45
West Chester East High School	42
Central Bucks High Sch South	40
Coatesville Area Senior Hs	39
Garnet Valley High School	34
Spring-Ford Senior High School	34
West Chester Bayard Rustin Hs	32
Downingtown West	30
Springfield High School	29
Souderton Area High School	28
Archbishop Wood High School	27
Council Rock High School South	26
Penncrest High School	26
Pennsbury High School	26
Bishop Shanahan High School	25
Abington High School	24
Haverford High School	24
North Penn High School	24
Conestoga High School	23
Kennett High School	23
Unionville High School	23
Avon Grove High School	22
B Reed Henderson High School	22
Marple Newtown High School	21

<i>School</i>	<i>#</i>
Neshaminy High School	21
Twin Valley High School	21
Boyertown Area Senor HS	20
Central Bucks High School East	20
Owen J Roberts High School	20
Perkiomen Valley High School	20
Central Bucks High School West	19
Easton Area High School	19
Great Valley High School	19
Ridley High School	19
Archbishop Ryan High School	18
Cardinal O'Hara High School	18
Chichester High School	18
Parkland High School	18
Upper Darby High School	18
Archbishop Carroll High School	17
Exeter Township Senior Hs	17
Pennridge High School	17
Upper Merion Area High School	17
Methacton High School	16
Cumberland Valley High School	15
Upper Dublin High School	15
Council Rock High School North	14
Salesianum School	14

<i>School</i>	<i>#</i>
Southern Lehigh High School	14
Fleetwood Area High School	13
Hunterdon Central Regional HS	13
Notre Dame High School	13
Plymouth-Whitemarsh Hs	13
Sun Valley High School	13
Governor Miffling School District	12
Monsignor Bonner-Archb Pren Hs	12
Phoenixville Area High School	12
Radnor High School	12
Strath Haven High School	12
Bensalem High School	11
Central High School	11
Conestoga Valley Senior HS	11
Daniel Boone Area High School	11
Delaware Valley High School	11
Octorara Area High School	11
Pope John Paul II High School	11
Shawnee High School	11
Upper Moreland High School	11
Bishop McDevitt High School	10
Central Dauphin high School	10
Cheltenham High School	10
Emmaus High School	10

These headcounts are unduplicated and reflect the IPEDS unduplicated headcount.

Feeder Colleges: Fall 2017

Institutions Previously Attended With the Most Number of New Fall Undergraduate Transfer Students

[Excludes students who transitioned from non-degree to degree as well as Transfers with first degree at WCU]

Name	Count	Percent	Type	State
Delaware County Community College	359	27.5%	2 Year Public	PA
Montgomery County Community College	158	12.1%	2 Year Public	PA
Community College of Philadelphia	83	6.4%	2 Year Public	PA
Bucks County Community College	81	6.2%	2 Year Public	PA
Pennsylvania St Univ. University Park	38	2.9%	2 Year Public	PA
Temple University	28	2.1%	4 Year Public	PA
Harrisburg Area Community College	27	2.1%	4 Year Public	PA
Northampton County Area Community College	26	2.0%	4 Year Public	PA
Kutztown University	20	1.5%	4 Year Public	PA
Bloomsburg University of Pennsylvania	19	1.5%	4 Year Public	PA
Millersville Univ Pa	19	1.5%	2 Year Public	PA
Shippensburg University	17	1.3%	2 Year Public	PA
All Military	13	1.0%	2 Year Public	--
California University of Pennsylvania	12	0.9%	4 Year Public	PA
East Stroudsburg University of Pennsylvania	12	0.9%	4 Year Public	PA
Lehigh Carbon Community College	11	0.8%	4 Year Public	PA
Indiana University of Pennsylvania	9	0.7%	4 Year Public	PA
Eastern University	8	0.6%	4 Year Private	PA
Widener University	8	0.6%	4 Year Public	PA
University of Pittsburgh	7	0.5%	4 Year Private	PA
York College of PA	7	0.5%	4 Year Private	PA
Brookdale Community College	6	0.5%	2 Year Public	NJ
Gwynedd-Mercy College	6	0.5%	4 Year Private	PA
Lock Haven Univ Pa	6	0.5%	2 Year Public	PA
Reading Area Community College	6	0.5%	4 Year Public	PA
West Virginia Univ Morgantown	6	0.5%	4 Year Public	WV
Cabrini College	5	0.4%	4 Year Public	PA
Community College Air Force	5	0.4%	2 Year Public	PA
Holy Family University	5	0.4%	4 Year Private	PA
Messiah College	5	0.4%	4 Year Private	PA
Neumann University	5	0.4%	4 Year Private	PA
Philadelphia University	5	0.4%	4 Year Private	PA
Roxborough Memorial Hospital	5	0.4%	16 Month Private	PA
Saint Joseph's University	5	0.4%	4 Year Private	PA
Towson University	5	0.4%	4 Year Private	MD
Univ North Dakota Grand Forks	5	0.4%	4 Year Public	ND
Alvernia University	4	0.3%	4 Year Private	PA
Cecil Community College	4	0.3%	4 Year Private	MD
Immaculata University	4	0.3%	4 Year Private	PA
Lackawanna College	4	0.3%	2 Year Public	PA
Mansfield University PA	4	0.3%	4 Year Private	PA
Rowan Colg at Gloucester Cnty	4	0.3%	2 Year Public	NJ
University of Scranton	4	0.3%	4 Year Private	PA
Ursinus College	4	0.3%	4 Year Private	PA
West Chester University PA	4	0.3%	4 Year Public	PA
Delaware Valley College Sci Agric	3	0.2%	2 Year Public	PA
Desales University	3	0.2%	4 Year Private	PA
Drexel University	3	0.2%	4 Year Private	PA
Gettysburg College	3	0.2%	4 Year Private	PA
James Madison University	3	0.2%	4 Year Private	VA
Lincoln University Commonwealth PA	3	0.2%	4 Year Public	PA
Moravian College	3	0.2%	4 Year Private	PA

These headcounts are unduplicated and reflect the IPEDS unduplicated headcount.

First Time, Full Time, First Year Student Enrollment by Pennsylvania County: Fall 2017

Top 10 Counties* with Most Enrollments Ranked

County	Total	Percent	Rank
Adams	12	0.46%	
Allegheny	8	0.30%	
Armstrong	0	0.00%	
Beaver	1	0.04%	
Bedford	0	0.00%	
Berks	93	3.54%	6
Blair	0	0.00%	
Bradford	6	0.23%	
Bucks	278	10.57%	4
Butler	2	0.08%	
Cambria	0	0.00%	
Cameron	0	0.00%	
Carbon	2	0.08%	
Centre	1	0.04%	
Chester	458	17.41%	1
Clarion	1	0.04%	
Clearfield	0	0.00%	
Clinton	1	0.04%	
Columbia	6	0.23%	
Crawford	0	0.00%	
Cumberland	48	1.83%	
Dauphin	46	1.75%	
Delaware	319	12.13%	3

County	Total	Percent	Rank
Elk	0	0.00%	
Erie	0	0.00%	
Fayette	0	0.00%	
Franklin	5	0.21%	
Fulton	0	0.00%	
Greene	0	0.00%	
Huntingdon	0	0.00%	
Indiana	1	0.04%	
Jefferson	0	0.00%	
Juniata	0	0.00%	
Lackawanna	55	2.33%	
Lancaster	69	2.92%	7
Lawrence	1	0.04%	
Lebanon	9	0.38%	
Lehigh	68	2.88%	8
Luzern	19	0.81%	
Lycoming	8	0.34%	
McKean	1	0.04%	
Mercer	1	0.04%	
Mifflin	1	0.04%	
Monroe	30	1.27%	
Montgomery	330	13.98%	2
Montour	0	0.00%	

County	Total	Percent	Rank
Northampton	66	2.51%	10
Northumberland	6	0.23%	
Perry	2	0.08%	
Philadelphia	190	7.22%	5
Pike	15	0.57%	
Potter	0	0.00%	
Schuylkill	12	0.46%	
Snyder	2	0.08%	
Somerset	0	0.00%	
Sullivan	1	0.04%	
Susquehanna	2	0.08%	
Tioga	0	0.00%	
Union	2	0.08%	
Venango	0	0.00%	
Warren	0	0.00%	
Washington	0	0.00%	
Wayne	10	0.38%	
Westmoreland	4	0.15%	
Wyoming	2	0.08%	
York	71	2.70%	9
Out of State	358	13.61%	
Out of Country	7	0.27%	
Total	2,630	100.00%	

*County at the time of admission.

These headcounts are unduplicated and reflect the IPEDS unduplicated headcount.

First Time, Full Time, First Year Student Enrollment by State: Fall 2017

Top 10 States* with Most Enrollments Ranked

State	Total	Percent	Rank
Alabama	0	0.00%	
Alaska	0	0.00%	
Arizona	0	0.00%	
Arkansas	0	0.00%	
California	0	0.00%	
Colorado	1	0.04%	9(t)
Connecticut	1	0.04%	
Delaware	30	1.14%	3
District of Columbia	0	0.00%	
Florida	6	0.23%	6
Georgia	2	0.08%	8(t)
Hawaii	0	0.00%	
Idaho	0	0.00%	
Illinois	1	0.04%	9(t)
Indiana	0	0.00%	
Iowa	0	0.00%	
Kansas	0	0.00%	
Kentucky	1	0.04%	9(t)
Louisiana	0	0.00%	
Maine	0	0.00%	
Maryland	12	0.46%	4
Massachusetts	1	0.04%	9(t)
Michigan	0	0.00%	
Minnesota	0	0.00%	
Mississippi	0	0.00%	
Missouri	0	0.00%	
Montana	1	0.04%	9(t)

State	Total	Percent	Rank
Nebraska	0	0.00%	
Nevada	0	0.00%	
New Hampshire	0	0.00%	
New Jersey	287	10.91%	2
New Mexico	0	0.00%	
New York	9	0.34%	5
North Carolina	0	0.00%	
North Dakota	0	0.00%	
Ohio	2	0.08%	8(t)
Oklahoma	0	0.00%	
Oregon	0	0.00%	
Pennsylvania	2,265	86.12%	1
Rhode Island	0	0.00%	
South Carolina	1	0.04%	9(t)
South Dakota	0	0.00%	
Tennessee	0	0.00%	
Texas	0	0.00%	
Utah	0	0.00%	
Vermont	0	0.00%	
Virginia	3	0.11%	7
Washington	0	0.00%	
West Virginia	0	0.00%	
Wisconsin	0	0.00%	
Wyoming	0	0.00%	
Armed Forces	0	0.00%	
International	7	0.27%	
Total	2,630	100.00%	

*State at the time of admission.

These headcounts are unduplicated and reflect the IPEDS unduplicated headcount.

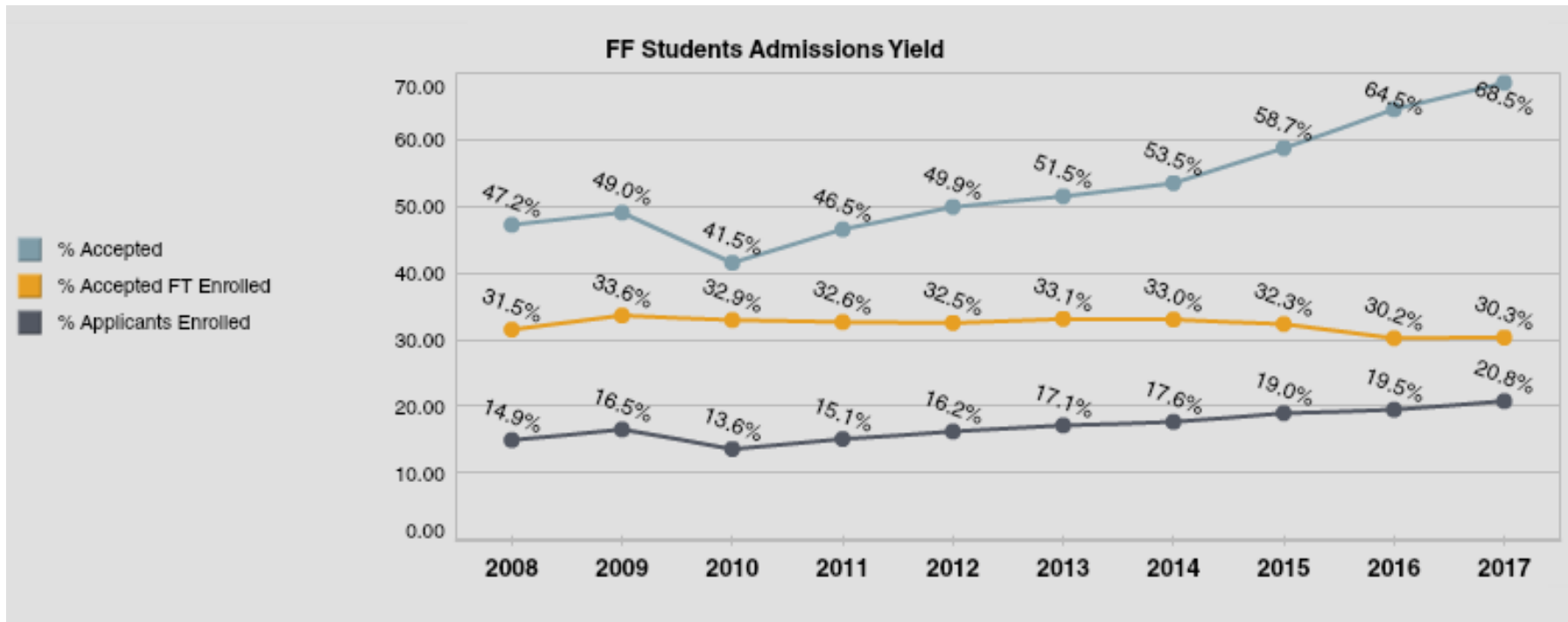
Admission Yield Statistics

First-Time, First Year Student Admission Yield

Year	# of Applicants	# Accepted	% Accepted	# Enrolled	% Accepted Full-Time	% of Applicants
2008	11,181	6,317	47.2	2,002	31.5	14.9
2009	11,534	6,667	49.0	2,248	33.6	16.5
2010	14,009	6,267	41.5	2,067	32.9	13.6
2011	14,097	7,013	46.5	2,292	32.6	15.1
2012	13,365	7,161	49.9	2,334	32.5	16.2
2013	13,438	6,922	51.5	2,298	33.1	17.1
2014*	13,291	7,108	53.5	2,351	33.0	17.6
2015*	12,624	7,408	58.7	2,395	32.3	19.0
2016*	12,604	8,127	64.5	2,454	30.2	19.5
2017*	12,667	8,677	68.5	2,630	30.3	20.8
5-YR Change	-5.2%	21.2%		12.7%		
1-YR Change	0.5%	6.8%		7.2%		
5-YR Difference			18.60		-2.20	4.60
1-YR Difference			4.02		0.10	1.33

*Starting Fall 2014, number of applicants includes completed applications only.
These headcounts are unduplicated and reflect the IPEDS unduplicated headcount.

First Time, First Year Admission Yield



Starting Fall 2014, number of applicants includes completed applications only.

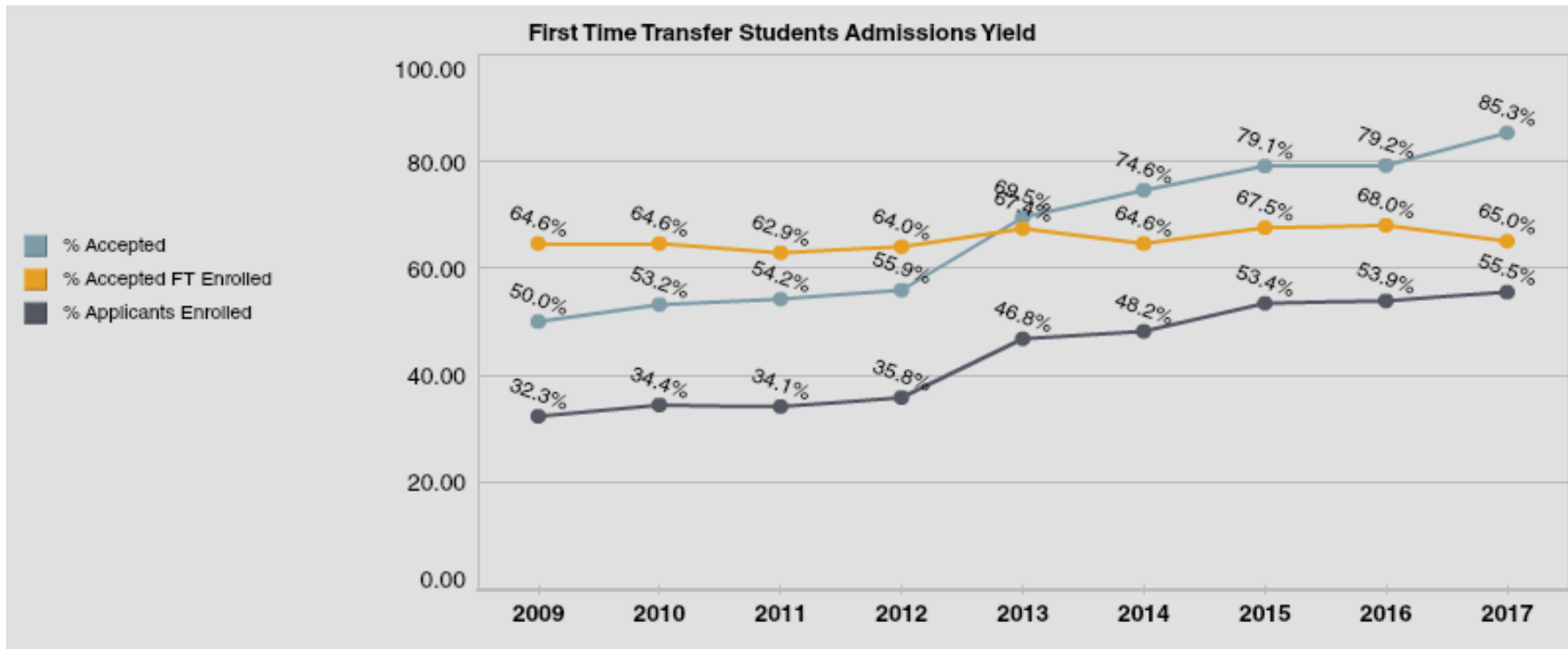
First Time Transfer Admission Yield

Year	# of Applicants	# Accepted	% Accepted	# Enrolled	% of Accepted Enrolled	% of Applicants Enrolled
2009	3,639	1,821	50.0	1,176	64.6	32.3
2010	3,607	1,920	53.2	1,241	64.6	34.4
2011	3,742	2,029	54.2	1,276	62.9	34.1
2012	3,678	2,057	55.9	1,316	64	35.8
2013	2,883	2,003	69.5	1,350	67.9	46.8
2014*	2,762	2,061	74.6	1,331	64.6	48.2
2015*	2,649	2,095	79.1	1,415	67.5	53.4
2016*	2,703	2,142	79.2	1,457	68.0	53.9
2017*	2,400	2,048	85.3	1,332	65.0	55.5
5-YR Change	-34.7%	-0.4%		1.2%		
1-YR Change	2.0%	-4.4%		-8.6%		
5-YR Difference			29.43		1.04	19.70
1-YR Difference			6.09		-2.98	1.60

*Starting Fall 2014, number of applicants includes completed applications only.

These headcounts are unduplicated and reflect the IPEDS unduplicated headcount.

First Time Transfer Admission Yield



Starting Fall 2014, number of applicants includes completed applications only.



ENROLLMENT

Head Count Enrollment by Gender and Race/Ethnicity: Fall 2017

Gender	Undergraduate		Graduate		Total*
	Full-Time	Part-time	Full-Time	Part-time	
Male	5,278	658	277	652	6,865
Female	7,742	773	697	1,229	10,441
Total	13,020	1,431	974	1,881	17,306

Ethnicity	Undergraduate		Graduate		Total*
	Full-Time	Part-time	Full-Time	Part-time	
African American	1,386	244	179	207	2,016
Native American	13	4	0	0	17
Asian	295	62	32	50	439
Caucasian	9,953	961	652	1,504	13,070
Hawaiian/Pacific Islander	11	3	0	0	14
Hispanic	747	84	38	65	934
Non-Resident Alien	61	2	42	14	119
Multiracial	444	41	28	25	538
Not Supplied	110	30	3	16	159
Total	13,020	1,431	974	1,881	17,306

These headcounts are unduplicated and reflect the IPEDS unduplicated headcount.

Head Count Enrollment by Degree Status and College: Fall 2017

Degree Status	Undergraduate		Graduate		Total*
	Full-Time	Part-time	Full-Time	Part-time	
Degree Seeking	11,666	1,162	931	1,603	16,990
Non-degree Seeking	1,354	269	43	278	316
Total	13,020	1,431	974	1,881	17,306

College	Undergraduate		Graduate		Total*
	Full-Time	Part-time	Full-Time	Part-time	
Arts & Humanities	1,400	116	62	138	1,716
Business and Public Management	3,634	288	146	608	4,676
Education & Social Work	1,170	104	394	615	2,283
Health Sciences	2,235	313	242	223	3,013
Science & Mathematics	2,679	262	104	170	3,215
Interdisciplinary & Graduate Studies	1,584	331	4	95	2,014
School of Music	318	17	22	32	389
Total	13,020	1,431	974	1,881	17,306

These headcounts are unduplicated and reflect IPEDS unduplicated headcount.

Interdisciplinary & Graduate Studies include non-degree and undeclared major students.

Enrollment by State at the Time of Admission: Fall 2014 to Fall 2017

State	Fall 2014			Fall 2015			Fall 2016			Fall 2017		
	UG	G	Total	UG	G	Total	UG	G	Total	UG	G	Total
Alabama	0	0	0	0	0	0	1	1	2	1	1	2
Alaska	1	0	1	1	0	1	1	0	1	1	0	1
Arizona	0	1	1	1	1	2	1	1	2	1	1	2
Arkansas	0	1	1	0	0	0	0	0	0	0	0	0
California	9	4	13	9	4	13	9	8	17	7	11	18
Colorado	0	1	1	0	0	0	0	0	0	1	0	1
Connecticut	15	0	15	6	1	7	6	1	7	6	4	10
Delaware	152	50	202	170	44	214	168	47	215	162	61	223
Florida	7	1	8	4	3	7	6	4	10	11	10	21
Georgia	2	0	2	1	0	1	0	1	1	2	5	7
Hawaii	2	0	2	2	0	2	2	0	2	1	0	1
Idaho	0	1	1	0	1	1	0	0	0	0	0	0
Illinois	0	0	0	0	0	0	0	1	1	1	3	4
Indiana	0	0	0	0	1	1	0	0	0	0	1	1
Iowa	1	1	2	2	0	2	1	0	1	0	0	0
Kansas	0	0	0	0	0	0	0	0	0	0	1	1
Kentucky	0	0	0	0	1	1	0	2	2	1	1	2
Louisiana	0	1	1	1	1	2	1	0	1	1	0	1
Maine	1	1	2	1	1	2	1	1	2	1	1	2
Maryland	80	13	93	81	14	95	87	20	107	80	29	109
Massachusetts	4	5	9	4	4	8	4	2	6	4	4	8
Michigan	4	1	5	4	0	4	3	1	4	2	0	2
Minnesota	1	0	1	1	1	2	0	3	3	0	3	3
Missouri	0	1	1	0	0	0	0	1	1	0	1	1
Montana	0	0	0	0	0	0	0	1	1	1	1	2
Nevada	1	0	1	1	1	2	1	0	1	1	0	1
New Hampshire	2	1	3	2	1	3	2	0	2	2	0	2
New Jersey	1,343	61	1,404	1,355	60	1,415	1,273	74	1,347	1,188	91	1,279
New Mexico	0	0	0	1	0	1	1	1	2	0	0	0
New York	60	8	68	59	9	68	60	14	74	55	18	73
North Carolina	4	4	8	3	5	8	1	7	8	2	5	7
North Dakota	0	0	0	1	0	1	1	0	1	1	0	1

to be continued.....

These headcounts are unduplicated and reflect the IPEDS unduplicated headcount.

Enrollment by State at the Time of Admission: Fall 2014 to Fall 2017 (continued)

STATE	Fall 2014			Fall 2015			Fall 2016			Fall 2017		
	UG	G	Total	UG	G	Total	UG	G	Total	UG	G	Total
Ohio	1	2	3	1	0	1	2	6	8	4	7	11
Oklahoma	0	0	0	0	0	0	0	0	0	0	1	1
Oregon	1	1	2	0	1	1	0	0	0	0	0	0
Pennsylvania	12,071	1,974	14,045	12,409	2,137	14,546	12,686	2,348	15,034	12,841	2,528	15,369
Rhode Island	0	1	1	1	0	1	1	0	1	2	1	3
South Carolina	2	1	3	1	1	2	2	2	4	4	3	7
Tennessee	1	0	1	0	0	0	0	0	0	0	2	2
Texas	2	0	2	3	2	5	4	9	13	2	10	12
Utah	0	0	0	0	0	0	0	1	1	0	2	2
Vermont	0	0	0	0	0	0	1	0	1	1	1	2
Virginia	16	5	21	16	8	24	16	9	25	15	10	25
Washington	0	0	0	0	0	0	0	2	2	0	1	1
Washington D.C.	1	2	3	1	2	3	1	1	2	1	2	3
West Virginia	1	0	1	1	0	1	1	0	1	1	2	3
Wisconsin	1	2	3	0	2	2	1	1	2	1	4	5
Armed Forces	1	0	1	0	0	0	0	1	1	0	3	3
International	57	97	154	69	79	148	52	37	89	45	26	71
Other/Unknown	0	1	1	0	0	0	0	0	0	1	0	1
TOTAL	13,844	2,242	16,086	14,212	2,385	16,597	14,397	2,608	17,005	14,451	2,855	17,306
In-State	12,071	1,974	14,045	12,409	2,137	14,546	12,686	2,348	15,034	12,841	2,528	15,369
Out-of-State	1,773	268	2,041	1,803	248	2,051	1,711	260	1,971	1,610	327	1,937
Out-of-State %	12.81%	11.95%	12.69%	12.69%	10.40%	12.36%	11.88%	9.97%	11.59%	11.14%	11.45%	11.19%

These headcounts are unduplicated and reflect the IPEDS unduplicated headcount.

Enrollment by County for Pennsylvania Residents: Fall 2017

Top 10 Counties* With Most Enrollments Ranked

County	Total	Percent	Rank
Adams	56	0.38%	
Allegheny	41	0.28%	
Armstrong	0	0.00%	
Beaver	4	0.03%	
Bedford	1	0.01%	
Berks	484	3.32%	7
Blair	3	0.02%	
Bradford	13	0.09%	
Bucks	1,485	10.20%	6
Butler	8	0.05%	
Cambria	5	0.03%	
Cameron	0	0.00%	
Carbon	24	0.16%	
Centre	15	0.10%	
Chester	4,064	27.91%	1
Clarion	4	0.03%	
Clearfield	3	0.02%	
Clinton	4	0.03%	
Columbia	21	0.14%	
Crawford	3	0.02%	
Cumberland	246	1.69%	
Dauphin	223	1.53%	
Delaware	2,716	18.66%	3
Elk	0	0.00%	

County	Total	Percent	Rank
Erie	4	0.03%	
Fayette	1	0.01%	
Franklin	30	0.21%	2
Fulton	1	0.01%	
Greene	1	0.01%	
Huntingdon	3	0.02%	
Indiana	3	0.02%	
Jefferson	0	0.00%	
Juniata	3	0.02%	
Lackawanna	208	1.43%	
Lancaster	460	3.16%	8
Lawrence	2	0.01%	
Lebanon	61	0.42%	
Lehigh	341	2.34%	9
Luzerne	131	0.90%	
Lycoming	20	0.14%	
McKean	3	0.02%	
Mercer	1	0.01%	
Mifflin	3	0.02%	
Monroe	106	0.73%	
Montgomery	2,159	14.83%	4
Montour	3	0.02%	
Northampton	282	1.94%	10
Northumberland	28	0.19%	

County	Total	Percent	Rank
Perry	12	0.08%	
Philadelphia	1,562	10.73%	5
Pike	47	0.32%	
Potter	0	0.00%	
Schuylkill	77	0.53%	
Snyder	8	0.05%	
Somerset	1	0.01%	
Sullivan	1	0.01%	
Susquehanna	12	0.08%	
Tioga	5	0.03%	
Union	7	0.05%	
Venango	0	0.00%	
Warren	1	0.01%	
Washington	4	0.03%	
Wayne	31	0.21%	
Westmoreland	14	0.10%	
Wyoming	11	0.08%	
York	298	2.05%	
Not available	1	0.01%	
Total	15,369	100.00%	

*County at the time of admission.

These headcounts are unduplicated and reflect the IPEDS unduplicated headcount.

Head Count Enrollment: Fall 2013 to 2017

Five-Year Enrollment by Ethnicity and Gender

Undergraduate Students

Ethnicity	2013		2014		2015		2016		2017	
	Male	Female	Male	Female	Male	Female	Male	Female	Male	Female
White	4,491	6,645	4,457	6,571	4,519	6,541	4,533	6,485	4,549	6,365
African American	494	754	492	857	575	914	595	1022	603	1027
Hispanic	267	369	286	404	314	448	345	446	345	486
Asian	124	168	118	176	118	187	126	202	143	214
Hawaiian/Pacific Islander	3	5	2	12	7	10	8	8	8	6
Native American	5	10	3	11	1	13	2	12	3	14
NRA-International	17	24	20	21	25	43	24	43	19	44
Multiracial	134	188	145	218	167	242	176	263	207	278
Not Supplied	7	6	24	27	36	52	51	56	59	81
Total	5,542	8,169	5,547	8,297	5,762	8,450	5,860	8,537	5,936	8,515

Graduate Students

Ethnicity	2013		2014		2015		2016		2017	
	Male	Female	Male	Female	Male	Female	Male	Female	Male	Female
White	509	1,133	539	1,142	511	1,285	597	1,366	709	1,447
African American	79	177	86	209	86	233	102	274	115	271
Hispanic	17	47	18	49	20	56	21	64	29	74
Asian	18	39	18	44	15	47	21	38	35	47
Hawaiian/Pacific Islander	1	0	3	0	0	0	1	1	0	0
Native American	1	4	1	3	0	2	0	1	0	0
NRA-International	25	38	39	46	34	50	25	37	21	35
Multiracial	10	18	13	19	9	28	8	32	13	40
Not Supplied	7	11	4	9	4	5	8	12	7	12
Total	667	1,467	721	1,521	679	1,706	783	1,825	929	1,926

These headcounts are unduplicated and reflect the IPEDS unduplicated headcount.

Head Count Enrollment: Fall 2013 to 2017 Enrollment by College

Undergraduate Students

College	2013	2014	2015	2016	2017
Arts & Humanities	1,781	1,658	1,591	1,498	1,516
Business and Public Management	2,287	2,910	3,361	3,655	3,922
Education & Social Work	1,367	1,301	1,232	1,283	1,274
Health Sciences	2,481	2,572	2,631	2,644	2,548
Science & Mathematics	2,759	2,770	2,910	2,920	2,941
Interdis & Grad Studies	2,669	2,259	2,126	2,022	1,915
School of Music	367	374	361	375	335
Total	13,711	13,844	14,212	14,397	14,451

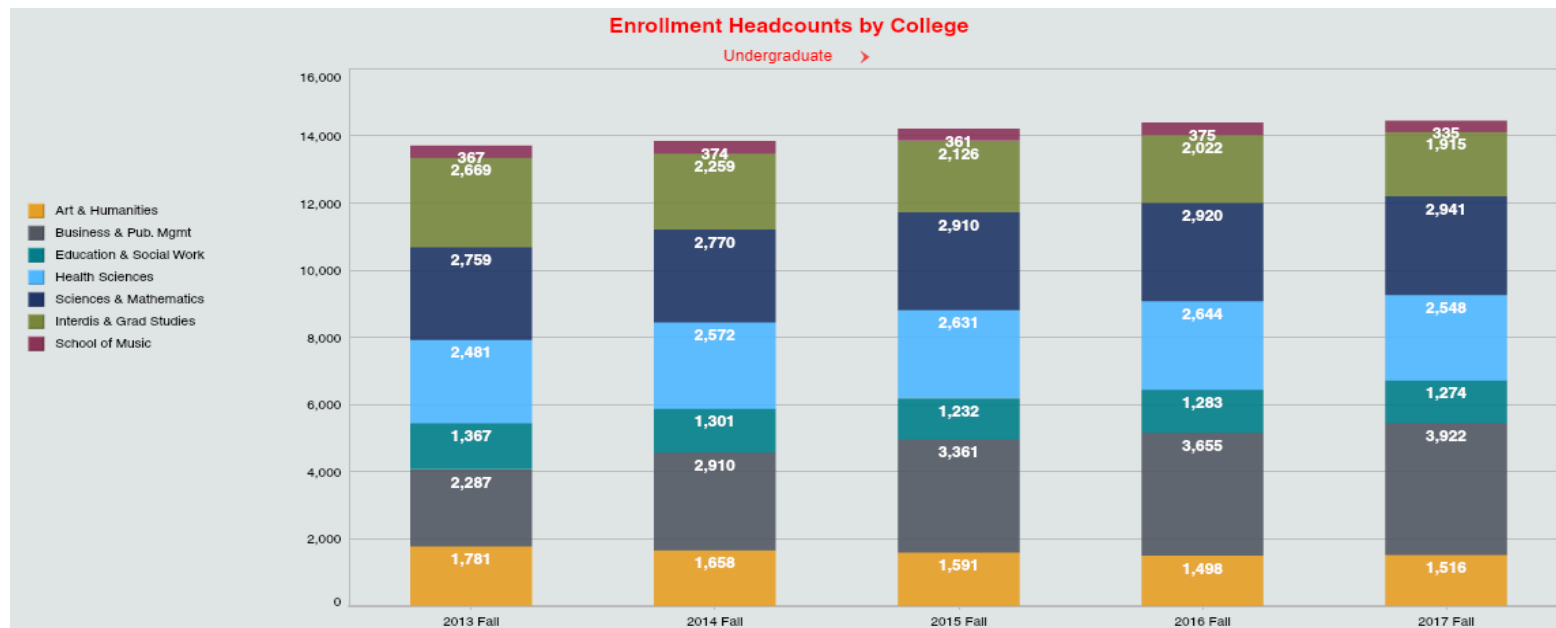
Graduate Students

College	2013	2014	2015	2016	2017
Arts & Humanities	184	180	183	188	200
Business and Public Management	337	343	370	549	754
Education & Social Work	736	798	907	966	1,009
Health Sciences	334	370	413	440	465
Science & Mathematics	294	315	322	304	274
Interdis & Grad Studies	180	167	127	103	99
School of Music	69	69	63	58	54
Total	2,134	2,242	2,385	2,608	2,855

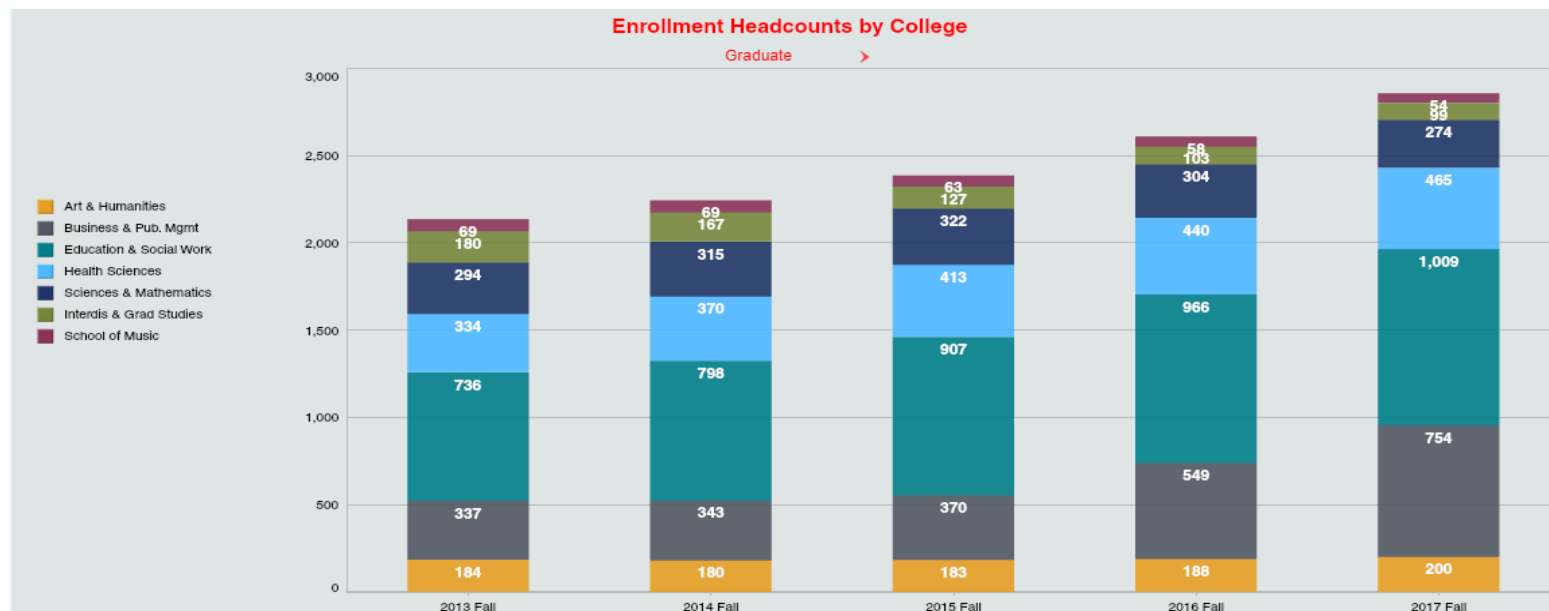
* Interdis & Grad Studies (Interdisciplinary & Graduate Studies) include non-degree and undeclared major students.

These headcounts are unduplicated and reflect the IPEDS unduplicated headcount.

Head Count Enrollment: Fall 2013 to 2017 Enrollment by College : Five Falls



Note: Non-degree and undeclared major students are included in Interdis & Grad Studies (Interdisciplinary & Graduate Studies).

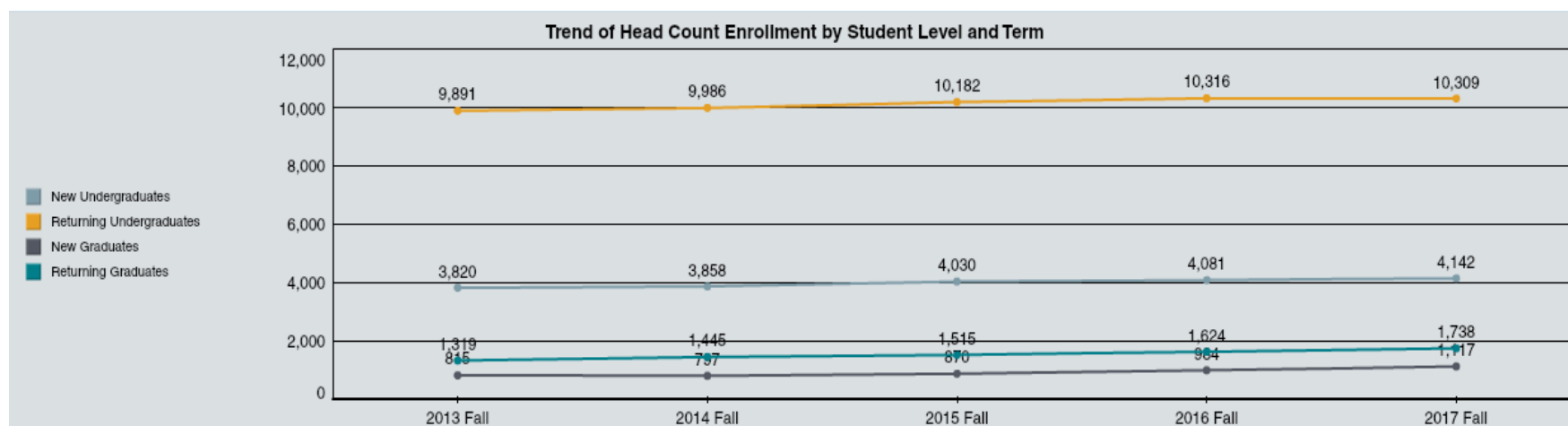


Head Count Enrollment by Student Level: Fall 2012 to Fall 2017

Fall Semester	2013	2014	2015	2016	2017	One Year Difference
Undergraduate						
New First Year Degree Seeking	2,298	2,351	2,395	2,454	2,630	176
New Transfer Degree Seeking	1,349	1,331	1,415	1,457	1,332	-125
New Readmits Degree Seeking	76	107	100	56	73	17
New Undergraduate Non Degree	97	69	120	114	107	-7
Returning Undergraduate Degree Seeking First Year	657	555	596	573	663	90
Returning Undergraduate Degree Seeking Sophomore	2,585	2,650	2,616	2,671	2,610	-61
Returning Undergraduate Degree Seeking Junior	2,912	2,969	3,087	3,052	2,977	-75
Returning Undergraduate Degree Seeking Senior	3,579	3,647	3,738	3,859	3,917	58
Returning Undergraduate Non Degree	158	165	145	161	142	-19
Graduate						
New Masters	621	612	686	770	896	126
New Doctorate	-	17	38	74	69	-5
New Graduate Non Degree	194	168	146	140	152	12
Returning Masters	1,132	1,211	1,287	1,357	1,462	105
Returning Doctorate	-	15	40	72	107	35
Returning Graduate Non Degree	187	219	188	195	169	-26
Total Enrollment	15,845	16,086	16,597	17,005	17,306	301

These headcounts are unduplicated and reflect the IPEDS unduplicated headcount.

Headcount Enrollment by Student Level Fall 2013-2017



Credit Hours and Student FTE Enrollment FY 2012-13 to FY 2016-17

Student FTE Enrollment: FY 2012-13 to FY 2016-17

FTE Division	2012-13	2013-14	2014-15	2015-16	2016-17	One Year Difference
Lower Division Full-Time Equivalent Students	8,070.5	8,184.6	8,277.9	8,458.2	8,386.1	-72.1
Upper Division Full-Time Equivalent Students	5,066.5	5,179.0	5,283.4	5,356.9	5,480.7	123.8
Graduate Division Full-Time Equivalent Students	1,405.7	1,466.8	1,567.8	1,620.0	1,755.3	135.3
Total Full-Time Equivalent Students	14,542.7	14,830.4	15,129.1	15,435.1	15,622.1	187.0

Credit Hours: FY 2012-13 to FY 2016-17

College	2012-13	2013-14	2014-15	2015-16	2016-17	One Year Difference
Arts & Humanities	133,903.5	130,937.0	130,570.0	130,834.5	128,114.0	-2,720.5
Business and Public Management	56,813.0	62,116.0	68,073.0	75,654.0	82,740.0	7,086.0
*Interdisciplinary & Graduate Studies	3,148.5	3,047.0	3,440.0	2,873.0	3,307.5	434.5
Education & Social Work	47,561.0	47,078.0	47,066.0	46,451.0	48,560.0	2,109.0
Health Sciences	60,464.5	64,313.0	66,164.0	67,461.0	68,469.0	1,008.0
Science & Mathematics	125,957.0	128,618.0	129,152.0	130,060.0	126,939.0	-3,121.0
Total University Credit Hours	427,847.5	436,109.0	444,444.0	453,333.5	458,129.5	4,796.0

*Interdisciplinary & Graduate Studies include non-degree and undeclared major students.

Credit Hours by College and Course Division For FY 2016-17

College	Lower	Upper	Total Undergraduate	Graduate	Total	% Graduate
Arts & Humanities	92,921.0	31,644.0	124,565.0	3,549.0	128,114.0	2.8%
Business and Public Management	30,621.0	42,955.0	73,576.0	9,164.0	82,740.0	11.1%
Education & Social Work	8,517.0	23,849.0	32,366.0	16,194.0	48,560.0	33.3%
Health Sciences	25,165.0	34,843.0	60,008.0	8,461.0	68,469.0	12.4%
Science & Mathematics	92,801.0	29,379.0	122,180.0	4,759.0	126,939.0	3.7%
*School of Interdisciplinary & Graduate Studies	1,557.0	1,750.5	3,307.5	0.0	3,307.5	0.0%
Total University Credit Hours	251,582.0	164,420.5	416,002.5	42,127.0	458,129.5	9.2%

*School of Interdisciplinary & Graduate Studies include non-degree and undeclared students.

A large purple L-shaped graphic is positioned on the right side of the page, partially overlapping the white box containing the title.

RETENTION AND GRADUATION

Retention and Graduation Rates for First-time, Full-Time, First-Year, Degree-Seeking Student Cohorts --University Summary

Fall Cohort	N 1st Fall	2nd Fall		3rd Fall		4th Fall		5th Fall				6th Fall				7th Fall			
		Cohort Retained		Cohort Retained		Cohort Retained		Cumulative Graduated within 4 yrs*		Cohort Retained		Cumulative Graduated within 5 yrs		Cohort Retained		Cumulative Graduated within 6 yrs		Cohort Retained	
		n	% 1F	n	% 1F	n	% 1F	n	% 1F	n	% 1F	n	% 1F	n	% 1F	n	% 1F	n	% 1F
2004	1,874	1,570	84.0	1,361	72.8	1,306	69.8	736	39.4	535	28.6	1,160	62.0	95	5.1	1,228	65.7	29	1.6
2005	1,901	1,607	84.7	1,442	76.0	1,378	72.6	817	43.0	528	27.8	1,243	65.5	81	4.3	1,303	68.7	26	1.4
2006	1,885	1,616	85.8	1,467	77.9	1,401	74.4	803	42.6	553	29.4	1,233	65.5	93	4.9	1,298	68.9	26	1.4
2007	1,957	1,650	84.4	1,511	77.3	1,428	73.0	857	43.8	536	27.4	1,266	64.8	96	4.9	1,346	68.8	27	1.4
2008	1,993	1,683	84.5	1,517	76.2	1,453	72.9	872	43.8	525	26.4	1,271	63.8	108	5.4	1,340	67.3	35	1.8
2009	2,241	1,908	85.2	1,746	77.9	1,692	75.5	954	42.6	670	29.9	1,502	67.1	113	5.0	1,588	70.9	36	1.6
2010	2,062	1,773	86.1	1,636	79.4	1,568	76.1	947	46.0	555	26.9	1,391	67.5	88	4.3	1,444	70.1	31	1.5
2011	2,283	1,948	85.4	1,820	79.8	1,731	75.9	1,110	48.7	593	26.0	1,586	69.5	102	4.5	1,656	72.6	25	1.1
2012	2,326	2,031	87.4	1,881	80.9	1,803	77.5	1,178	50.7	596	25.6	1,656	71.2	97	4.2				
2013	2,292	2,010	87.8	1,883	82.3	1,802	78.8	1,227	53.6	558	24.4								
2014	2,344	2,059	87.9	1,930	82.4	1,862	79.5												
2015	2,381	2,043	85.8	1,909	80.2														
2016	2,441	2,077	85.1																
2017	2,620																		

Note: Data is from Fall enrollment at census dates and completions files as reported to IPEDS. Includes degree sweeps and IPEDS exclusions through 10/2017.

Second-Year Retention Rates for First-Time, Full-Time, Degree-Seeking First Year by Race/Ethnicity

Fall Cohort	African American			Asian			Latino			Native American			Caucasian		
	N 1 st Fall	N 2 nd Fall	% Retained	N 1 st Fall	N 2 nd Fall	% Retained	N 1 st Fall	N 2 nd Fall	% Retained	N 1 st Fall	N 2 nd Fall	% Retained	N 1 st Fall	N 2 nd Fall	% Retained
2010	203	170	83.7	41	36	87.8	114	87	76.3	2	1	50.0	1,643	1,423	86.6
2011	191	154	80.6	30	26	86.7	163	133	81.6	1	1	100.0	1,836	1,585	86.3
2012	211	181	85.8	48	43	89.6	136	114	83.8	0	0	0.0	1,880	1,651	87.8
2013	231	193	83.5	48	44	91.7	121	101	83.5	1	1	100.0	1,808	1,602	88.6
2014	232	190	81.9	48	42	87.5	119	106	89.1	1	1	100.0	1,843	1,638	88.9
2015	251	214	85.3	38	33	86.8	159	127	79.9	1	1	100.0	1,831	1,591	86.9
2016	263	216	82.1	53	45	84.9	147	110	74.8	0	0	0.0	1,843	1,603	87.0
2017	242			63			157			0			2,014		

Note: Data is from Fall enrollment at census dates and completions files as reported to IPEDS. Includes degree sweeps and IPEDS exclusions through 10/2017.

Second-Year Retention Rates for First-Time, Full-Time, Degree-Seeking First Year by Gender

Fall Cohort	Male			Female		
	N 1 st Fall	N 2 nd Fall	% Retained	N 1 st Fall	N 2 nd Fall	% Retained
2010	765	641	83.8	1,295	1,132	87.4
2011	903	753	83.4	1,378	1,195	86.7
2012	868	763	87.9	1,457	1,268	87.0
2013	806	683	84.8	1,482	1,327	89.5
2014	891	789	88.6	1,452	1,270	87.5
2015	888	746	84.0	1,492	1,297	86.9
2016	944	788	83.5	1,497	1,289	86.1
2017	1,031			1,589		

Note: Data is from Fall enrollment at census dates and completions files as reported to IPEDS. Includes degree sweeps and IPEDS exclusions through 10/2017.

Four Year Graduation Rates for First-Time, Full-Time First Year by Race/Ethnicity

Fall Cohort	African American			Asian			Latino			Native American			Caucasian		
	N 1st Fall	N Graduated within 4 years	% Graduated within 4 years	N 1st Fall	N Graduated within 4 years	% Graduated within 4 years	N 1st Fall	N Graduated within 4 years	% Graduated within 4 years	N 1st Fall	N Graduated within 4 years	% Graduated within 4 years	N 1st Fall	N Graduated within 4 years	% Graduated within 4 years
2008	201	38	18.9	43	20	46.5	90	33	36.7	5	2	40.0	1,647	777	47.2
2009	177	29	16.4	39	11	28.2	85	20	23.5	6	1	16.7	1,907	881	46.2
2010	203	44	21.7	41	16	39.0	114	34	29.8	2	1	50.0	1,643	826	50.3
2011	191	50	26.2	30	15	50.0	163	56	34.4	1	1	100.0	1,836	962	52.4
2012	211	54	25.6	48	26	54.2	136	52	38.2	0	0	0.0	1,880	1,025	54.5
2013	231	55	23.8	48	28	58.3	121	51	42.1	1	1	100.0	1,808	1,053	58.2

Note: Data is from Fall enrollment at census dates and completions files as reported to IPEDS. Includes degree sweeps and IPEDS exclusions through 10/2017.

Six Year Graduation Rates for First-Time, Full-Time First Year by Race/Ethnicity

Fall Cohort	African American			Asian			Latino			Native American			Caucasian		
	N 1st Fall	N Graduated within 6 years	% Graduated within 6 years	N 1st Fall	N Graduated within 6 years	% Graduated within 6 years	N 1st Fall	N Graduated within 6 years	% Graduated within 6 years	N 1st Fall	N Graduated within 6 years	% Graduated within 6 years	N 1st Fall	N Graduated within 6 years	% Graduated within 6 years
2006	171	98	57.3	41	24	58.5	66	33	50.0	5	3	60.0	1,596	1,136	71.2
2007	190	98	51.6	39	28	71.8	61	32	52.5	9	7	77.8	1,655	1,181	71.4
2008	201	110	54.7	43	31	72.1	90	62	68.9	5	4	80.0	1,647	1,130	68.6
2009	177	86	48.6	39	26	66.7	85	45	52.9	6	4	66.7	1,907	1,411	74.0
2010	203	106	52.2	41	30	73.2	114	70	61.4	2	1	50.0	1,643	1,194	72.7
2011	191	106	55.5	30	23	76.7	163	98	60.1	1	1	100.0	1,836	1,384	75.4

Note: Data is from Fall enrollment at census dates and completions files as reported to IPEDS. Includes degree sweeps and IPEDS exclusions through 10/2017.

Four Year Graduation Rates for First-Time, Full-Time First Year by Gender

Fall Cohort	Male			Female		
	N 1st Fall	Graduated within 4 years		N 1st Fall	Graduated within 4 years	
		#	%		#	%
2008	761	232	30.5	1,231	640	52.0
2009	887	277	31.2	1,353	677	50.0
2010	765	264	34.5	1,295	683	52.7
2011	903	338	37.4	1,378	772	56.0
2012	868	358	41.2	1,457	820	56.3
2013	806	331	41.1	1,482	896	60.5

Note: Data is from Fall enrollment at census dates and completions files as reported to IPEDS. Includes degree sweeps and IPEDS exclusions through 10/2017.

Six Year Graduation Rates for First-Time, Full-Time First Year by Gender

Fall Cohort	Male			Female		
	N 1st Fall	Graduated within 6 years		N 1st Fall	Graduated within 6 years	
		#	%		#	%
2006	683	401	58.7	1,200	897	74.8
2007	740	455	61.5	1,215	891	73.3
2008	761	463	60.8	1,231	877	71.2
2009	887	581	65.5	1,353	1007	74.4
2010	765	475	62.1	1,295	969	74.8
2011	903	603	66.8	1,378	1053	76.4

Note: Data is from Fall enrollment at census dates and completions files as reported to IPEDS. Includes degree sweeps and IPEDS exclusions through 10/2017.

A large purple graphic element consisting of a horizontal bar and a vertical bar that meet at a right angle, forming an L-shape. The horizontal bar is positioned behind the text box, and the vertical bar is on the right side of the page.

ACADEMIC DEGREE AND CERTIFICATE PROGRAMS

Undergraduate Degree and Certificate Programs - Fall 2017

College of Arts and Humanities

BA Communication Studies
 BA English: Literature
 BA English: Writings
 BA History
 BA History: American Studies
 BA Languages & Cultures: French
 BA Languages & Cultures: German
 BA Languages & Cultures: Russian
 BA Languages & Cultures: Spanish
 BA Philosophy
 BA Philosophy Accelerated
 BA Philosophy: Religious Studies
 BA: Theatre
 BA Theatre: Design/Tech/Management
 BA Theatre: Music Theatre
 BA Theatre: Performance
 BA Women's and Gender Studies
 BFA Graphic & Inter. Design
 BFA Studio Arts
 BSED English: Literature
 BSED English: Writings
 Certificate TESL
 Teaching Certification English
 Teaching Certification French
 Teaching Certification German
 Teaching Certification Latin
 Teaching Certification Russian
 Teaching Certification Social Studies - History
 Teaching Certification Spanish

College of Arts and Humanities (cont...)

Teaching Certification Teacher Ed French
 Teaching Certification Teacher Ed German
 Teaching Certification Teacher Ed Russian
 Teaching Certification Teacher Ed Spanish
 Teaching Certification Teacher Ed Social Studies - History

School of Music

BM Music: Performance Instr
 BM Music: Performance Jazz
 BM Music: Performance Keyboard
 BM Music: Performance Voice
 BM Music Educ: Instrument
 BM Music Educ: Keyboard
 BM Music Educ: Voice
 BM Music: Elective Studies
 BM Music: History
 BM Music: Theory
 BM Music: Composition
 Teaching Certification Music Education

College of Business and Public Management

BA Geography
 BA Geography Accelerated
 BA Geography: Environmental
 BA Geography: Environmental Accelerated
 BA Geography: Geographic Information Systems
 BA Geography: Urban/Regional Planning

College of Business and Public Management (cont...)

BS Accounting
 BS Business Management
 BS Criminal Justice
 BS Criminal Justice Accelerated
 BS Criminal Justice (Philadelphia)
 BS Economics
 BS Finance
 BS International Business
 BS Marketing
 BS Pre-Business Accounting
 BS Pre-Business: Eco-Finance
 BS Pre-Business: Management
 BS Pre-Business: Marketing
 BS Urban & Environmental Plan
 Pre-International Business
 Teacher Education Social Studies - Geography Teacher Certification

College of Education and Social Work

BSED Early Grades Prep, PK-4 Education
 BSED Middle Grades Prep, 4-8 Education
 BSED Special Education: 7-12
 BSED Special Education: PK-8
 BSW Social Work
 BSW Social Work (Philadelphia)
 Certificate Education for Sustainability
 Teaching Certification Early Childhood Education

Undergraduate Degree and Certificate Programs - Fall 2017 (continued)

College of Health Sciences

BA Communication Science & Disorders
 BS Environmental Health
 BS Exercise Science
 BS Health and Physical Education
 BS Health Science: General
 BS Health Science: Respiratory Care
 BS Health Science: Sport Medicine Concentration
 BS Health Science: Sport Medicine Concentration Accelerated
 BS Nutrition and Dietetics
 BS Nutrition and Dietetics Accelerated
 BS Pre-Chiropractic
 BS Pre-Occupational Therapy
 BS Pre-Physical Therapy
 BS Public Health
 BSN Nursing
 BSN Nursing: 2nd Degree
 BSN Nursing: RN
 BSN Nursing: RN (Philadelphia)
 Certificate Athletic Training
 Pre-Grad Program Certificate

School of Interdisciplinary and Graduate Studies

BA Liberal Studies: Arts & Science
 BS Liberal Studies: Profession
 BS Liberal Studies: Science/Math
 Certificate Honors Seminar
 Undeclared Business
 Undeclared General
 Undeclared Internal Transfer

College of Science and Mathematics

BA Anthropology
 BA Geography: GIS Accelerated
 BA Mathematics
 BA Mathematics Accelerated
 BA Political Science: Applied Public Policy
 BA Political Science: Government and Politics
 BA Political Science: Int'l Relations
 BA Psychology
 BA Sociology
 BS Biology
 BS Biology: Cell & Molecular
 BS Biology: Ecology/Conserv
 BS Biology: Integ. Accelerated
 BS Biology: Marine Science
 BS Biology: Medical Lab Science
 BS Biology: Microbiology
 BS Chemistry
 BS Chemistry-Biology
 BS Computer Science
 BS Computer Science Accelerated
 BS Foren & Toxicol Chemistry
 BS Geoscience: Earth Systems
 BS Geoscience: Earth Systems Accelerated
 BS Geoscience: Geology
 BS Geoscience: Geology Accelerated
 BS Mathematics: Actuarial Science
 BS Mathematics: Applied & Computational
 BS Mathematics: Applied & Computational Accelerated
 BS Mathematics: Finance
 BS Mathematics: Pure Mathematics

College of Science & Mathematics (cont..)

BS Mathematics: Pure Mathematics Accelerated
 BS Mathematics: Statistics
 BS Mathematics: Statistics Accelerated
 BS Pharmaceutical Product Dev
 BS Physics
 BS Physics-Engineering
 BSED Biology
 BSED Chemistry
 BSED Earth-Space Sci: Geology
 BSED Earth-Space Science
 BSED Mathematics
 BSED Physics
 Computer Security CERTIF
 Teaching Certification Biology
 Teaching Certification Chemistry
 Teaching Certification Earth-Space Science
 Teaching Certification General Science
 Teaching Certification Mathematics
 Teaching Certification Physics
 Teaching Education General Science
 Teaching Education Social Studies-Political Science

Graduate Degree and Certificate Programs - Fall 2017

College of Arts and Humanities

Certificate Business Ethics
 Certificate Healthcare Ethics
 Certificate Holocaust and Genocide Studies
 Certificate Publishing
 Certificate TESL
 MA Communication Studies
 MA English
 MA History
 MA Holocaust and Genocide Studies
 MA Languages & Cultures in French
 MA Languages & Cultures in German
 MA Languages & Cultures in Spanish
 MA Philosophy: Applied Ethics
 MA Philosophy: General
 MA Philosophy: Applied Ethics - Accelerated
 MA Philosophy: General - Accelerated
 MA TESL
 MED History
 MPA Leadership for Women
 Teaching Certification English
 Teaching Certification French
 Teaching Certification German
 Teaching Certification Latin
 Teaching Certification Social Studies - History
 Teaching Certification Spanish

School of Music

Certificate Kodaly Methodology
 Certificate Music Technology
 Certificate Orff-Schulwerk
 Certificate Piano Pedagogy
 MM Music Performance- Organ
 MM Music Performance- Piano
 MM Music Performance- Vocal
 MM Music Performance
 MM Music Performance- Instrument
 MM Music: Piano Pedagogy
 MM Music: Theory & Composition
 MM Music Education: Kodaly
 MM Music Education: Mus. Tech
 MM Music Education: Orff Schulwerk
 MM Music Education: Research
 MM Music Education: Performance
 MM Music Performance- Choral
 MM Music Performance- Instrument Cond
 Music Education: Technology
 Music: History and Literature
 Teaching Certification Music Education

College of Business and Public Management

Certificate Administration
 Certificate in Business Analytics
 Entrepreneurship Certificate
 Certificate Geographic Information Systems
 Certificate Human Resource Management
 Certificate Non Profit Administration
 Certificate in Project Management
 Certificate Urban and Regional Planning
 Doctor of Public Administration
 Master of Urban and Regional Planning
 MBA General
 MPA Human Resource Management
 MPA Individualized Program
 MPA Nonprofit Administration
 MPA Public Administration
 MS Criminal Justice
 MS Criminal Justice (Philadelphia)
 MS Criminal Justice -Accelerated
 MS Geography
 MS Geography -Accelerated
 MS Human Resource Management

Graduate Degree and Certificate Programs - Fall 2017 (continued)

College of Education and Social Work

Certificate Autism
 Certificate Education for Sustainability
 Certificate Educational Technology
 Certificate Entrepreneurial Education
 Certificate Gerontology
 Certificate Literacy
 Certificate Literacy Coaching
 Certificate of Advanced Graduate Professional Growth
 Certificate Professional Counseling Licensure Prep
 Certificate Special Education
 Certificate Universal Design Learning
 Doctor of Education
 MED Applied Studies in Teaching and Learning
 MED Applied Studies in Teaching and Learning (sprf)
 MED Counseling - School
 MED Early Childhood Education
 MED Reading
 MED Secondary Education
 MED Special Education
 MED Special Education (online)
 MS - Higher Education Counseling/Student Affairs
 MS Clinical Mental Health Counseling
 MS Higher Education Pol. & Student Affairs
 MS Transfer Education & Soc. Change
 MSW Social Work
 MSW Social Work Advanced Stand
 MSW Social Work (Phila)
 MSW Social Work , Adv St, Phila
 Professional Growth Counselling
 Professional Growth Reading
 Professional Growth Special Education
 Reading MED at Coatsville School Dist
 Reading MED at OJR School Dist
 Teaching Certification Counseling
 Teaching Certification Early Childhood Education
 Teaching Certification Early Grades Preparation
 Teaching Certification Middle Grades Preparation
 Teaching Certification Reading
 Teaching Certification Secondary Education

College of Education and Social Work (cont..)

Teaching Certification Special Education 7-12 (Online)
 Teaching Certification Special Education 7-12 (Philadelphia)
 Teaching Certification Special Education: 7-12
 Teaching Certification Special Education: K-12
 Teaching Certification Special Education: PK-8
 Teaching Certification Special Education: PK-8 (Online)
 Teaching Certification Special Education: PK-8 (Philadelphia)
 Teaching Certification Reading (Philadelphia)

College of Science and Mathematics

Certificate Web Technology
 Certificate Applied Statistics
 Certificate Computer Security
 Certificate in Indust/Organiz Psych
 Certificate Information Systems
 Certificate Clinical Mental Health
 Doctorate of Psychology
 MA Mathematics
 MA Mathematics Accelerated
 MA Psychology: Clinical
 MA Psychology: General
 MA Psychology: Industrial/Organizational
 MS Applied & Computational Math
 MS Applied & Computational Math Accelerated
 MS Applied Statistics
 MS Applied Statistics Accelerated
 MS Biology: Non-Thesis
 MS Biology: Thesis
 MS Biology: Thesis Accelerated
 MS Computer Science
 MS Computer Science Accelerated
 MS Geoscience
 MS Geoscience Accelerated
 Teaching Certification Biology
 Teaching Certification Chemistry
 Teaching Certification Earth-Space Science
 Teaching Certification General Science
 Teaching Certification Physics

College of Health Sciences

Doctorate of Nursing Practice
 Certificate Adapted Physical Education
 Certificate Emergency Preparedness
 Certificate Health Care Management
 Certificate Health: Integrative Health
 Certificate Post Master Dietetic Intern
 Certificate School Nursing
 Certificate Sports Management and Athletics
 MA Speech-Language Pathology
 MED Health - School Health
 MPH Public Health: Administration
 MPH Public Health: Community
 MPH Public Health: Environment
 MPH Public Health: Integrative
 MPH Public Health: Management
 MPH: Nutrition
 MS Athletic Training
 MS Athletic Training Accelerated
 MS Community Nutrition
 MS Community Nutrition Accelerated
 MS Exercise and Sport Physiology
 MS Exercise and Sport Physiology: Athletic Training
 MS Health and Physical Education - Sport/Exercise Physiology
 MS Physical Education
 MSN Nursing
 MSN Nursing: Advanced Practice-Adult Gerontology
 MSN Nursing: Educator
 Teaching Certificate Health & Physical Education
 Teaching Certificate School Nursing

Professional and Program Accreditations

West Chester University is accredited by
The Middle States Commission on Higher Education (MSCHE)

Accreditation Board for Engineering and Technology (ABET)
Accreditation Council for Continuing Medical Education (ACCME)
Accreditation Council for Education in Nutrition and Dietetics (ACEND)
American Chemical Society (ACS)
American Council on the Teaching of Foreign Languages (ACTFL) - Recognized Programs
American Orff Schulwerk Association (AOSA)
American Speech-Language-Hearing Association (ASHA)
Association to Advance Collegiate Schools of Business (AACSB)
Association for Middle Level Education (AMLE) - Recognized Programs
Commission on Accreditation of Allied Health Education Programs (CAAHEP) - Pending Renewal
Commission on Accreditation of Athletic Training Education (CAATE)
Commission on Collegiate Nursing Education (CCNE)
Committee on Accreditation for Respiratory Care (CoARC)
Council on Education for Public Health (CEPH)
Council for Exceptional Children (CEC) - Recognized Programs
Council on Social Work Education (CSWE)

Professional and Program Accreditations (Continued)

Council for Accreditation of Counseling and Related Educational Programs (CACREP)
Forensic Science Education Programs Accreditation Communication(FEPAC)
International Literacy Association (ILA)- Recognized Programs
Middle States Commission on higher Education (MSCHE)
National Association of Schools of Music (NASM)
National Association for the Education of Young Children (NAEYC) - Recognized Programs
National Association of Schools of Art and Design (NASAD)
National Association of Schools of Theatre (NAST)
National Council for the Accreditation of Teacher Education (NCATE)
National Council for the Social Studies (NCSS) - Recognized Programs
National Council of Teachers of English (NCTE) - Recognized Programs
National Science Teachers Association (NSTA) - Recognized Programs
National Environmental Health Science and Protection Accreditation Council (EHAC)
Network of Schools of Public Policy, Affairs, and Administration (NASPAA)
Organization of American Kodaly Educators (OAKE)
Pennsylvania Department of Education (PDE)
Society of Health and Physical Educators (SHAPE) - Recognized Programs



DEGREES CONFERRED

The following counts include only Baccalaureate (Primary and Secondary Major), Master's and Doctoral degrees.

College of Art & Humanities

	2012-13	2013-14	2014-15	2015-16	2016-17
Communication Studies					
Communication Studies BA	160	139	155	192	212
Communication Studies Undergraduate Total	160	139	155	192	212
Commun. Studies MA (Phila)				1	1
Communication Studies MA	11	9	10	7	7
Communication Studies Graduate Total	11	9	10	8	8
Communication Studies Total	171	148	165	200	220

English

English BA: Literature	24	30	33	20	22
English BA: Writings	43	47	63	48	36
English BS/ED: Literature	30	36	14	21	15
English BS/ED: Writings	10	18	10	10	8
English Undergraduate Total	107	131	120	99	81
English MA	24	38	25	14	10
English Graduate Total	24	38	25	14	10
English Total	131	169	145	113	91

Foreign Languages

BA Languages & Culture, French				1	3
BA Languages & Culture, Russia			1	1	5
BA Languages & Cultures, Span				2	6
French BA	9	8	7	6	3
German BA	10	3	7	6	2
Latin BA	1	2			
Russian BA	6	3	5	6	1
Spanish BA	28	22	19	13	13
Foreign Languages Undergraduate Total	54	38	39	35	33

Foreign Languages Continued...

	2012-13	2013-14	2014-15	2015-16	2016-17
French MA	5	2	5	1	1
French MED	2	2	2	2	2
Lang & Cultures MA, French				1	
Lang & Cultures MA, Spanish				1	
Spanish MA		3	3	2	3
Spanish MED	1	1		1	2
Foreign Languages Graduate Total	8	8	10	8	8
Foreign Languages Total	62	46	49	43	41

History

History BA	101	94	86	77	65
History: American Studies BA	1	1	1		1
History Undergraduate Total	102	95	87	77	66
History MA	2	9	6	6	6
History MED					1
History Graduate Total	2	9	6	6	7
History Total	104	104	93	83	73

Holocaust and Genocide Studies

Holocaust & Genocide Studie MA	2	8	5	7	3
Holocaust and Genocide Graduate Total	2	8	5	7	3
Holocaust and Genocide Studies Total	2	8	5	7	3

Philosophy

Philosophy BA	14	20	10	13	15
Philosophy:Religious Studie BA	2	2	1		2
Philosophy Undergraduate Total	16	22	11	13	17
Philosophy MA: Applied Ethics		1		1	
Philosophy MA: General	5	6	5	2	5
Philosophy Graduate Total	5	7	5	3	5
Philosophy Total	21	29	16	16	22

Teach Eng as a Second Lang	2012-13	2013-14	2014-15	2015-16	2016-17
TESL MA	10	7	11	9	6
Teach Eng as a Second Language Graduate Total	10	7	11	9	6
Teach Eng as a Second Lang Total	10	7	11	9	6

Womens Studies

Women's and Gender Studies BA	7	12	5	18	13
Women Studies Undergraduate Total	7	12	5	18	13
Womens Studies Total	7	12	5	18	13

Art & Design

Graphic & Inter. Design BFA			30	30	25
Studio Arts BA	1	1			
Studio Arts BFA	47	48	26	23	13
Art & Design Undergraduate Total	48	49	56	53	38
Art & Design Total	48	49	56	53	38

Theatre Arts

Theatre and Dance: Dance BA	2	1	1		
Theatre: BA	3	4	7	4	8
Theatre: Design/Tech/Manag BA	3	4	2	3	3
Theatre: Mus Thtre BA	9	7	7	7	15
Theatre: Performance BA	4	8	4	3	
Theatre Arts Undergraduate Total	21	24	21	17	26
Theatre Arts Total	21	24	21	17	26
College of Arts and Humanities Undergraduate Total	515	510	494	504	486
College of Arts and Humanities Graduate Total	62	86	72	55	47
College of Art & Humanities Total	577	596	566	559	533

School of Music

Applied Music

	2012-13	2013-14	2014-15	2015-16	2016-17
Music: Performance Instr BM	13	10	11	16	21
Music: Performance Jazz BM	2	1		1	4
Music: Performance Keyboard BM	2	5	1	1	1
Music: Performance Voice BM	7	5	3	4	6
Applied Music Undergraduate Total	24	21	15	22	32
Music Performance MM	8	15	15	11	9
Music: Piano Pedagogy MM		1		3	3
Music Perform-MM Instrum. Cond					1
Applied Music Graduate Total	8	16	15	14	13
Applied Music Total	32	37	30	36	45

Music Education

Music Educ: Instrument BM	29	22	30	45	36
Music Educ: Keyboard BM	7	2	5	2	5
Music Educ: Voice BM	15	10	16	11	11
Music Education Undergraduate Total	51	34	51	58	52
Music Education MM: Research	1	3	6	4	2
Music Education MM: Performance	14	5	8	5	1
Music Education MM: Kodaly					2
Music Education MM: Orff-Schul					5
Music Education: Technology	2	1	4	1	4
Music Education Graduate Total	17	9	18	10	14
Music Education Total	68	43	69	68	66

Music Theory, History and Comp	2012-13	2013-14	2014-15	2015-16	2016-17
Music: Elective Studies BM	8	5	6	7	7
Music: Theory & Composition BM	7	4	5	1	8
Music: History BM					1
Music, Theory, History and Comp Undergraduate Total	15	9	11	8	16
Music History MA	1			2	
Music: History and Literature		1			
Music: Theory & Composition MM		1	4	2	1
Music, Theory, History and Comp Graduate Total	1	2	4	4	1
Music Theory, History and Comp Total	16	11	15	12	17
School of Music Undergraduate Total	90	64	77	88	100
School of Music Graduate Total	26	27	37	28	28
School of Music Total	116	91	114	116	128

College of Business & Public Management

Criminal Justice

Criminal Justice BS	108	103	109	120	142
Criminal Justice BS (Phila)				1	9
Criminal Justice BS Accel					6
Criminal Justice BS Phila Accel					1
Criminal Justice Undergraduate Total	108	103	109	121	158
Criminal Justice MS	18	16	19	15	12
Criminal Justice MS (Phila)			2	3	5
Criminal Justice Graduate Total	18	16	21	18	17
Criminal Justice Total	126	119	130	139	175

Geography & Planning

	2012-13	2013-14	2014-15	2015-16	2016-17
Geography BA	7	2	2	6	1
Geography: Environmental	4	3	4	3	11
Geography:GIS BA	4	8	2	1	8
Geography:Urban/Regional PI BA	2	6	2	12	2
Urban & Environmental Plan BS					5
Geography & Planning Undergraduate Total	17	19	10	22	27
Geography MS	9	12	14	8	10
Regional Planning MPA	1				
Geography & Planning Graduate Total	10	12	14	8	10
Geography & Planning Total	27	31	24	30	37

Public Policy and Administration

Human Resource Mgmt. MPA	8	9	9	15	7
Human Resource Mgmt. MSA	2		1		
Long-Term Hlth Care MSA	1				
Nonprofit Administration MPA	3	4	11	11	5
Public Administration MPA	37	40	30	32	20
Sport & Athletic Admin MSA	1				
Sport Mgt & Athletics MPA	1				
Training & Developmt MSA	1				
Public Policy and Administration Graduate Total	54	53	51	58	32
Doctor of Public Administration					6
Public Policy and Administration Doctorate Total	0	0	0	0	6
Public Policy and Administration Total	54	53	51	58	38

Accounting

Accounting BS	75	95	98	106	138
Accounting Undergraduate Total	75	95	98	106	138
Accounting Total	75	95	98	106	138

Economics

	2012-13	2013-14	2014-15	2015-16	2016-17
Economics BS	36	36	42	58	75
Finance BS	119	128	168	199	230
Economics Undergraduate Total	155	164	210	257	305
Economics Total	155	164	210	257	305

Management

Business Management BS	133	152	155	170	222
International Business BS					1
Management Undergraduate Total	133	152	155	170	223
Management Total	133	152	155	170	223

Marketing

Marketing BS	118	130	139	173	200
Marketing Undergraduate Total	118	130	139	173	200
Marketing Total	118	130	139	173	200

MBA Program

Bus Admin: General MBA	24	22	40	41	78
MBA Program Graduate Total	24	22	40	41	78
MBA Program Total	24	22	40	41	78
College of Business & Public Management Undergraduate Total	606	663	721	849	1051
College of Business & Public Management Graduate Total	106	103	126	125	137
College of Business & Public Management Doctorate Total	-	-	-	-	6
College of Business & Public Management Total	712	766	847	974	1,194

College of Education & Social Work

Counselor Education

	2012-13	2013-14	2014-15	2015-16	2016-17
Couns: Higher Ed/Stu Aff MS	24	36	33	34	28
Counseling: Elementary MED	19	49	1		
Counseling: School MED			43	44	51
Counseling: Secondary MED	40	49	1		
Counselor Education Graduate Total	83	134	78	78	79
Counselor Education Total	83	134	78	78	79

Early and Middle Grades Ed.

Early Childhood Educ BSED	12				
Early Grades Prep, PK-4 BSED	146	225	243	180	204
Elementary Education BSED	35	1			

Early and Middle Grades Ed. Continued...

Middle Grades Prep, 4-8 BSED	26	82	62	44	53
Early and Middle Grades Ed. Undergraduate Total	219	308	305	224	257
App Stud Teach/Lear MED (sprf)				2	20
Applied Studies Teach/Lear MED	16	11	11	12	18
Early Childhood Education MED	1	17		10	23
Early and Middle Grades Ed. Graduate Total	17	28	11	24	61
Early and Middle Grades Ed. Total	236	336	316	248	318

Literacy

Reading MED	67	45	29	29	31
Literacy Graduate Total	67	45	29	29	31
Literacy Total	67	45	29	29	31

Educational Foundations and Policy Studies

Secondary Education MED	15	9	4	7	1
MS Transf Edu & Soc Change					4
Educational Foundations and Policy Studies Graduate Total	15	9	4	7	5
Educational Foundations and Policy Studies Total	15	9	4	7	5

Special Education	2012-13	2013-14	2014-15	2015-16	2016-17
Special Education BSED	28				
Special Education: 7-12 BSED	1	7	5	10	9
Special Education: PK-8 BSED	33	87	130	105	102
Special Education Undergraduate Total	62	94	135	115	111
Special Education MED	30	17	11	12	9
Special Education MED (online)		7	8	26	34
Special Education MED (Phila)			2	1	
Special Education Graduate Total	30	24	21	39	43
Special Education Total	92	118	156	154	154

Social Work

Social Work BSW	56	47	39	30	53
Social Work BSW (Phila)				5	10
Social Work Undergraduate Total	56	47	39	35	63
Social Work MSW	53	54	57	48	44
Social Work MSW (Phila)				19	22
Social Work MSW Advanced Stand			17	13	13
Social Work MSW, Advanced Stand, Phila					1
Social Work Graduate Total	53	54	74	80	80
Social Work Total	109	101	113	115	143
College of Education & Social Work Undergraduate Total	337	449	479	374	431
College of Education & Social Work Graduate Total	265	294	217	257	299
College of Education & Social Work Total	602	743	696	631	730

College of Health Sciences

Communicative Disorders

Communication Sci & Disord BA	59	75	90	89	92
Communicative Disorders Undergraduate Total	59	75	90	89	92
Speech-Language Pathology MA	28	27	27	27	26
Communicative Disorders Graduate Total	28	27	27	27	26
Communicative Disorders Total	87	102	117	116	118

Kinesiology	2012-13	2013-14	2014-15	2015-16	2016-17
Exercise Science BS	37	44	47	40	60
Health & Physical Educ BS	80	60	47	21	18
Pre-Chiropractic BS		3	1		2
Pre-Occupational Therapy BS	14	26	28	44	60
Pre-Physical Therapy BS	34	55	44	61	71
Kinesiology Undergraduate Total	165	188	167	166	211
HLth&Phys Ed: Exercise Phys MS	10	3	1		1
MS in Ex Sport Phys: Athl Trng	2	6	6	8	7
MS in Exercise/Sport Physiolog	2	4	7	15	5
MS in Physical Education	1	1			
Kinesiology Graduate Total	15	14	14	23	13
Kinesiology Total	180	202	181	189	224

Nutrition

Nutrition and Dietetics BS	103	115	140	151	115
Nutrition and Dietetics BS Accel					22
Nutrition Undergraduate Total	103	115	140	151	137
Public Health MPH: Nutrition	14	16	18	30	14
Community Nutrition MS					3
Nutrition Graduate Total	14	16	18	30	17
Nutrition Total	117	131	158	181	154

Sports Medicine Department

Athletic Training BS	32	41	42	42	36
Sports Medicine Department Undergraduate Total	32	41	42	42	36
Sports Medicine Department Total	32	41	42	42	36

Nursing

Nursing BSN	74	57	30	53	50
Nursing BSN: 2nd degree	1	26	39	32	30
Nursing BSN: RN	84	63	73	42	44
Nursing BSN: RN (Phila)					30
Nursing Undergraduate Total	159	146	142	127	154

Nursing Continued...

	2012-13	2013-14	2014-15	2015-16	2016-17
Nursing MSN	17	6	7	3	1
Public Hlth Nursing MSN: Admin		2	3	1	
Public Hlth Nursing MSN: Integ		1			
Nursing Graduate Total	17	9	10	4	1
Doctor of Nursing Practice					21
Nursing Doctorate Total					21
Nursing Total	176	155	152	131	176

Health

Environmental Health BS	7	8	9	25	14
Health Sci: General BS	17	14	17	20	22
Hlth Sci: Respiratory Care BS	27	22	25	25	20
Public Health	22	38	37	56	51
Health Undergraduate Total	73	82	88	126	107
Health: School Health MED	12	9	8	4	9
Public Health MPH: Community	40	36	28	36	37
Public Health MPH: Environment	6	2	5	7	6
Public Health MPH: Integrative	9	2	10	1	
Public Health MPH: Management	8	14	21	16	23
Public Health MPH:Admin	12	1			
Health Graduate Total	87	64	72	64	75
Health Total	160	146	160	190	182
College of Health Sciences Undergraduate Total	591	647	669	701	737
College of Health Sciences Graduate Total	161	130	141	148	132
College of Health Sciences Doctorate Total	-	-	-	-	21
College of Health Sciences Total	752	777	810	849	890

College of Sciences & Mathematics

Anthropology & Sociology

	2012-13	2013-14	2014-15	2015-16	2016-17
Anthropology BA	20	12	20	7	17
Sociology BA	51	59	43	43	26
Anthropology & Sociology Undergraduate Total	71	71	63	50	43
Anthropology & Sociology Total	71	71	63	50	43

Biology

Biology BA		1	1	1	
Biology BS	42	23	46	51	49
Biology BSED	7	8	6	5	2
Biology: Cell & Molecular BS	13	21	33	33	37
Biology: Ecology/Conserv BS	9	9	11	10	8
Biology: Marine Science			3	4	7
Biology: Medical Technology BS	3	2	2	3	1
Biology: Microbiology BS	10	11	8	9	13
Biology Undergraduate Total	84	75	110	116	117
Biology : Thesis MS	7	4	1	5	6
Biology MS	8	6	7	3	4
Biology Graduate Total	15	10	8	8	10
Biology Total	99	85	118	124	127

Chemistry

Biochemistry BS	9	4	5	8	4
Chemistry BS	12	12	13	15	18
Chemistry BSED	4	1	2		1
Chemistry-Biology BS	13	12	9	12	17
Foren & Toxicol Chemistry BS	11	11	9	3	5
Chemistry Undergraduate Total	49	40	38	38	45
Chemistry Total	49	40	38	38	45

College of Sciences & Mathematics Continued...
Computer Science

	2012-13	2013-14	2014-15	2015-16	2016-17
Computer Science BS	23	45	27	47	57
Computer Science Undergraduate Total	23	45	27	47	57
Computer Science MS	5	6	13	16	17
Computer Science Graduate Total	5	6	13	16	17
Computer Science Total	28	51	40	63	74

Geology & Astronomy

Earth-Space Science BSED	7	4	4	2	3
Geoscience : Earth Systems BS	13	11	17	15	8
Geoscience: Geology BS	4	8	5	12	24
Geoscience: Geology Accel					1
Geology & Astronomy Undergraduate Total	24	23	26	29	36
Geoscience MA	6	11	7	11	
Geoscience MS				7	10
Geology & Astronomy Graduate Total	6	11	7	18	10
Geology & Astronomy Total	30	34	33	47	46

Mathematics

Mathematics BA	8	4	3		4
Mathematics BSED	14	24	26	21	20
Mathematics: Actuarial Sci BS	3	15	15	14	21
Mathematics: Computational BS	4	1	3	1	1
Mathematics: Finance BS	2	6	6	5	6
Mathematics: Applied & Comp BS	2	1	3	1	2
Mathematics: Pure Mathematics		1	3	1	3
Mathematics: Statistics BS	13	5	13	13	11
Mathematics Undergraduate Total	46	57	72	56	68
Applied Statistics MS	24	22	25	33	30
Mathematics MA	5	14	9	6	11
Mathematics Graduate Total	29	36	34	39	41
Mathematics Total	75	93	106	95	109

College of Sciences & Mathematics Continued...

Pharmaceutical Product Dev.

	2012-13	2013-14	2014-15	2015-16	2016-17
Pharmaceutical Product Dev BS	14	11	14	16	17
Pharmaceutical Product Dev. Undergraduate Total	14	11	14	16	17
Pharmaceutical Product Dev. Total	14	11	14	16	17

Physics

Physics BS	8	5	4	4	15
Physics BSED	2	1	4		1
Physics-Engineering BS	1	3	3	1	5
Physics Undergraduate Total	11	9	11	5	21
Physics Total	11	9	11	5	21

Political Science

Poli Sci:Applied Pub Policy BA	10	4	6	8	6
Polit Sci : Int'l Relations BA	15	23	22	23	24
Political Sci. Gov. and Pol.	37	61	43	38	32
Political Science Undergraduate Total	62	88	71	69	62
Political Science Total	62	88	71	69	62

Psychology

Psychology BA	186	212	258	249	231
Psychology Undergraduate Total	186	212	258	249	231
Psychology: Clinical MA	24	16	11	19	28
Psychology: General MA	4	1	7	4	2
Psychology: Industrial MA	11	20	20	10	17
Psychology Graduate Total	39	37	38	33	47
Psychology Total	225	249	296	282	278
College of Science & Mathematics Undergraduate Total	570	631	690	675	697
College of Science & Mathematics Graduate Total	94	100	100	114	125
College of Sciences & Mathematics Total	664	731	790	789	822

School of Interdisciplinary & Graduate Studies

School of Interdisciplinary Studies

Liberal Studies Program

	2012-13	2013-14	2014-15	2015-16	2016-17
Liberal Studies: Arts & Sci BA	45	22	30	22	17
Liberal Studies: Sci/Math BS	12	6	9	13	8
Liberal Studies Program Undergraduate Total	57	28	39	35	25
Liberal Studies Program Total	57	28	39	35	25

Professional Studies Prog

Liberal Studies: Profession BS	206	240	214	203	181
Professional Studies Prog Undergraduate Total	206	240	214	203	181
Professional Studies Prog Total	206	240	214	203	181
School of Interdisciplinary Studies Total	263	268	253	238	206
School of Interdisciplinary & Graduate Studies Undergradate Total	263	268	253	238	206
School of Interdisciplinary & Graduate Studies Total	263	268	253	238	206

University Undergraduate Total	2,972	3,232	3,383	3,429	3,708
University Graduate Total	714	740	693	727	768
University Doctorate Total	-	-	-	-	27
Universtiy Total	3,686	3,972	4,076	4,156	4,503



TUITION & FEES

Tuition and Fees by Semester

Tuition Category	2012-13	2013-14	2014-15	2015-16	2016-17	2017-18
Undergraduate Tuition						
Full-Time In-State	\$ 3,214.00	\$ 3,311.00	\$ 3,410.00	\$ 3,530.00	\$ 3,619.00	\$ 3,746.00
Full-Time Out-of-State	\$ 8,035.00	\$ 8,278.00	\$ 8,525.00	\$ 8,825.00	\$ 9,048.00	\$ 9,365.00
Per Credit In-State	\$ 268.00	\$ 276.00	\$ 284.00	\$ 294.00	\$ 302.00	\$ 312.00
Per Credit Out-of-State	\$ 670.00	\$ 690.00	\$ 710.00	\$ 735.00	\$ 754.00	\$ 780.00
Undergraduate Fees						
Full-Time In-State	\$ 1,096.05	\$ 1,114.00	\$ 1,161.90	\$ 1,200.78	\$ 1,241.20	\$ 1,309.33
Full-Time Out-of-State	\$ 1,188.05	\$ 1,209.00	\$ 1,271.90	\$ 1,314.78	\$ 1,358.20	\$ 1,430.33
Per Credit In-State	\$ 91.41	\$ 92.00	\$ 97.24	\$ 100.90	\$ 103.76	\$ 109.77
Per Credit Out-of-State	\$ 99.41	\$ 100.00	\$ 106.24	\$ 109.90	\$ 113.76	\$ 119.77
Graduate Tuition						
Full-Time In-State	\$ 3,861.00	\$ 3,978.00	\$ 4,086.00	\$ 4,230.00	\$ 4,347.00	\$ 4,500.00
Full-Time Out-of-State	\$ 5,796.00	\$ 5,967.00	\$ 6,129.00	\$ 6,345.00	\$ 6,525.00	\$ 6,750.00
Per Credit In-State	\$ 429.00	\$ 442.00	\$ 454.00	\$ 470.00	\$ 483.00	\$ 500.00
Per Credit Out-of-State	\$ 644.00	\$ 663.00	\$ 681.00	\$ 705.00	\$ 725.00	\$ 750.00
Graduate Fees*						
Full-Time In-State	\$ 1,054.40	\$ 1,067.00	\$ 1,115.25	\$ 1,156.13	\$ 1,199.55	\$ 1,479.65
Full-Time Out-of-State	\$ 1,144.40	\$ 1,157.00	\$ 1,223.25	\$ 1,264.13	\$ 1,307.55	\$ 1,587.65
Per Credit In-State	\$ 105.05	\$ 106.00	\$ 110.78	\$ 114.75	\$ 119.05	\$ 149.79
Per Credit Out-of-State	\$ 115.05	\$ 116.00	\$ 122.78	\$ 126.75	\$ 131.05	\$ 161.79
Residence Halls						
Meal Plan**	\$ 1,247.00	\$ 1,272.00	\$ 1,293.00	\$ 1,326.57	\$ 1,396.54	\$ 1,471.00

*For information about special graduate program rates, and tuition & fees for Doctoral and Philadelphia campus programs please visit http://www.wcupa.edu/_information/afa/fiscal/bursar/tuition.asp .

**14 Meals per week + \$250 Flex Dollars.

For detail information on meal plans please visit http://wcupa.edu/_information/afa/fiscal/bursar/tuition.asp#MealPlans .



LIBRARY RESOURCES

Library Statistics

FY 2013-2014 through 2016-2017

Holdings	2013-2014	2014-2015	2015-2016	2016-2017	One Year Difference
Library Holdings					
Volumes	758,344	745,645	737,705	719,762	-17,943
Microforms	926,596	926,629	768,407	768,443	36
E-Books	844,919	766,280	1,011,265	1,011,585	320
Audio/Video units*	255,249	835,363	834,616	1,098,632	264,016
Circulation (General & Reserve)	68,218	63,802	58,402	51,364	-7,038
Holdings Total	2,905,718	3,408,323	3,418,006	3,400,916	-17,090
Total FTE Staff (includes student assistants)	49.13	50.37	47.87	47.00	-0.87

*Includes tapes, CDs, DVDs

Other Library Materials	2015-2016	2016-2017
Items Digitized by WCU Library	7,563	10,077
Digital Art Images	2,609,072	N/A
Digital Pamphlets, Reports, etc.	2,953,055	N/A
Digital Manuscript Pages	6,480,000	N/A

For questions /comments or recommendations for other data to include in the Fact Book, please contact Nilima Inamdar, Office of Institutional Research, WCU, 887, Matlack Street, West Chester PA 19381. Email: ninamdar@wcupa.edu Phone: 610-436-2456.