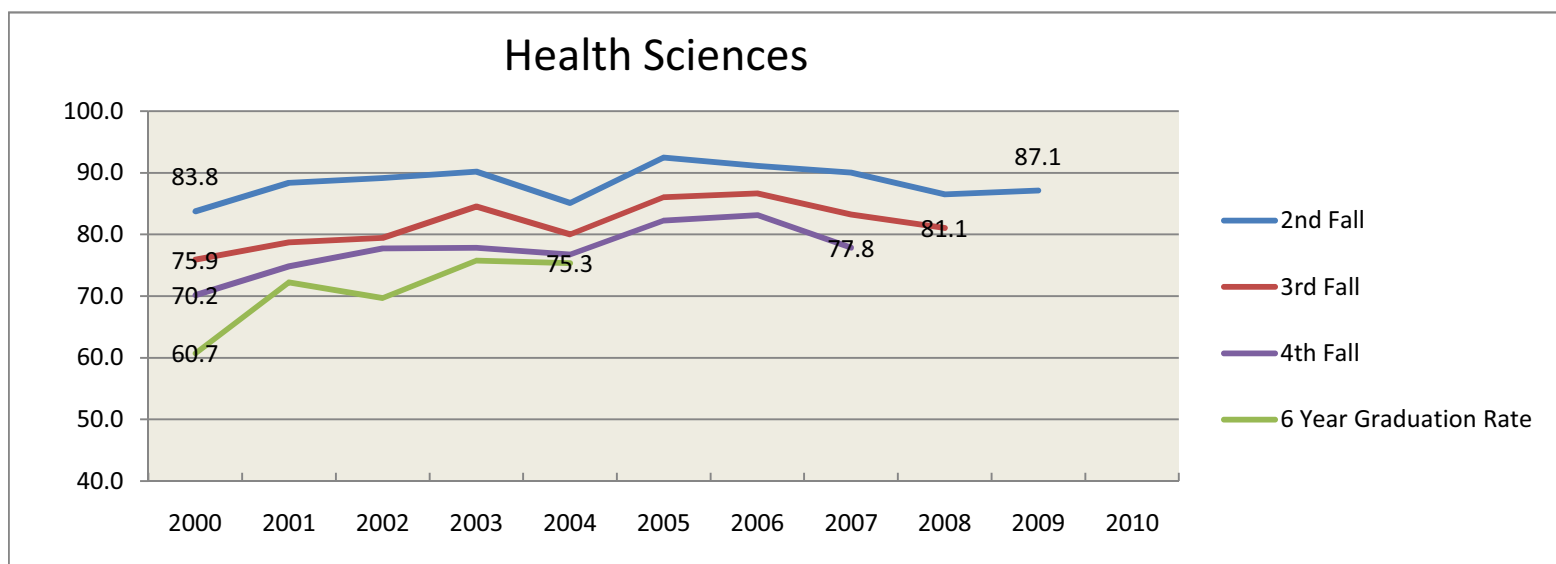
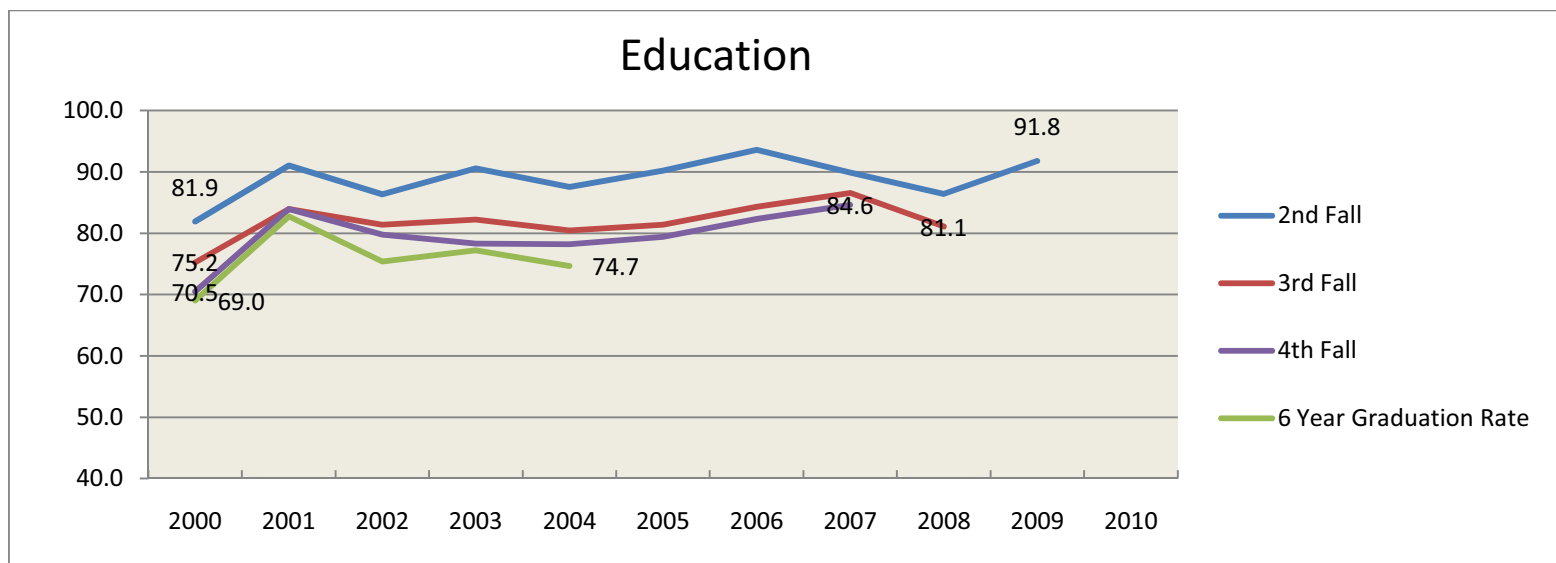
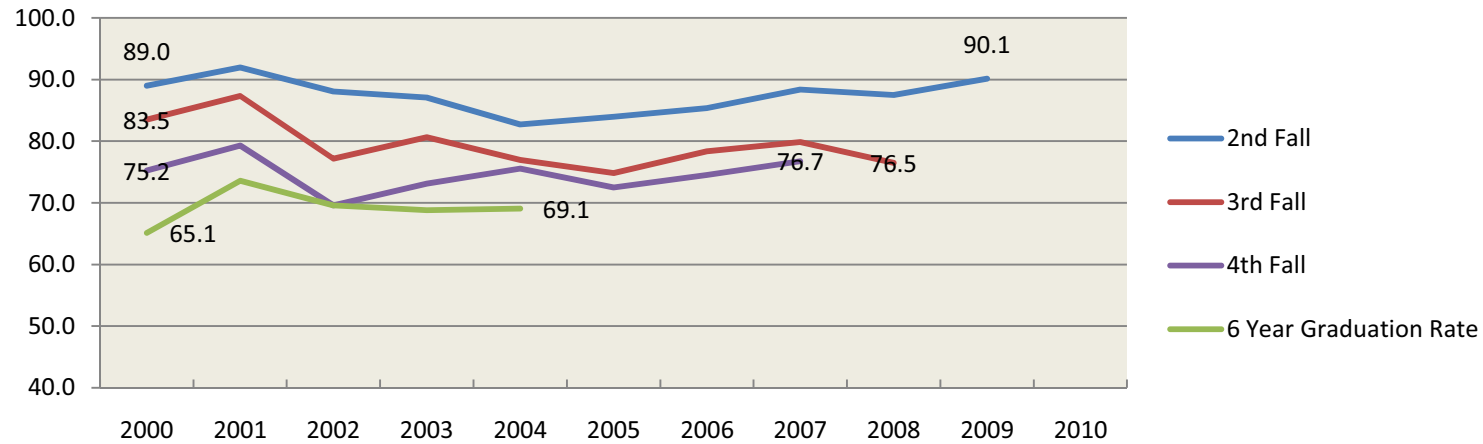


**Retention and Graduation Rates for First-time, Full Time, First Year Student Cohort--By College
2000-2010**

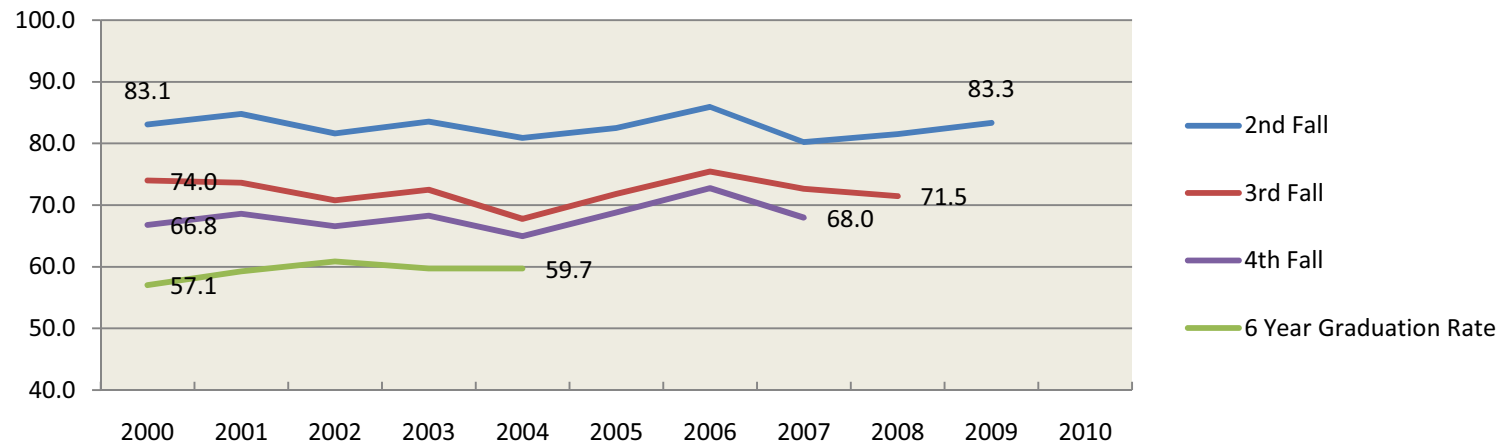


**Retention and Graduation Rates for First-time, Full Time, First Year Student Cohort--By College
2000-2010**

Visual and Performing Arts

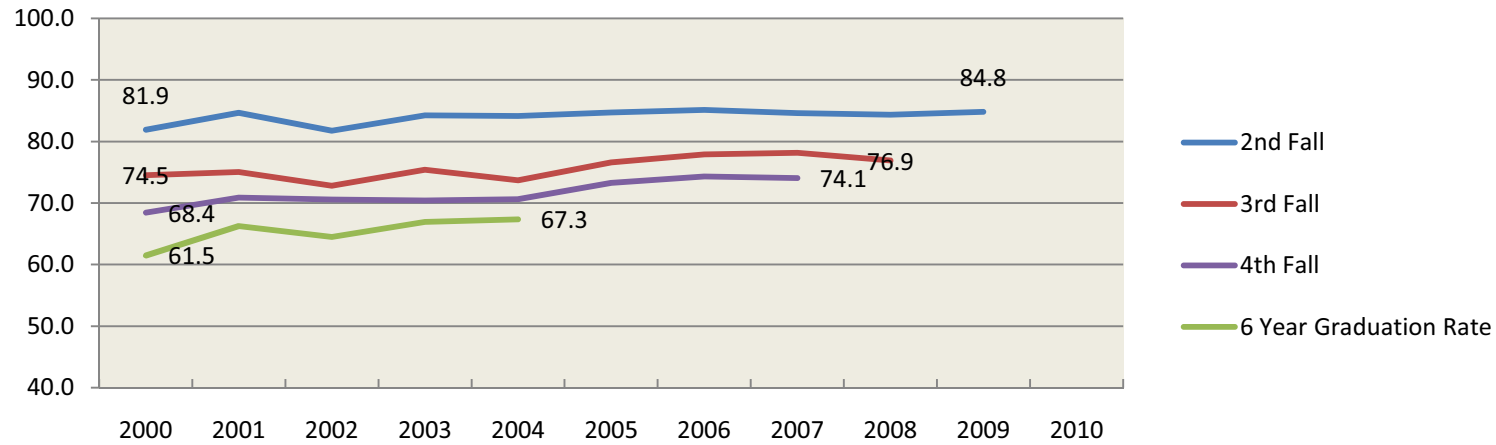


Educational Services

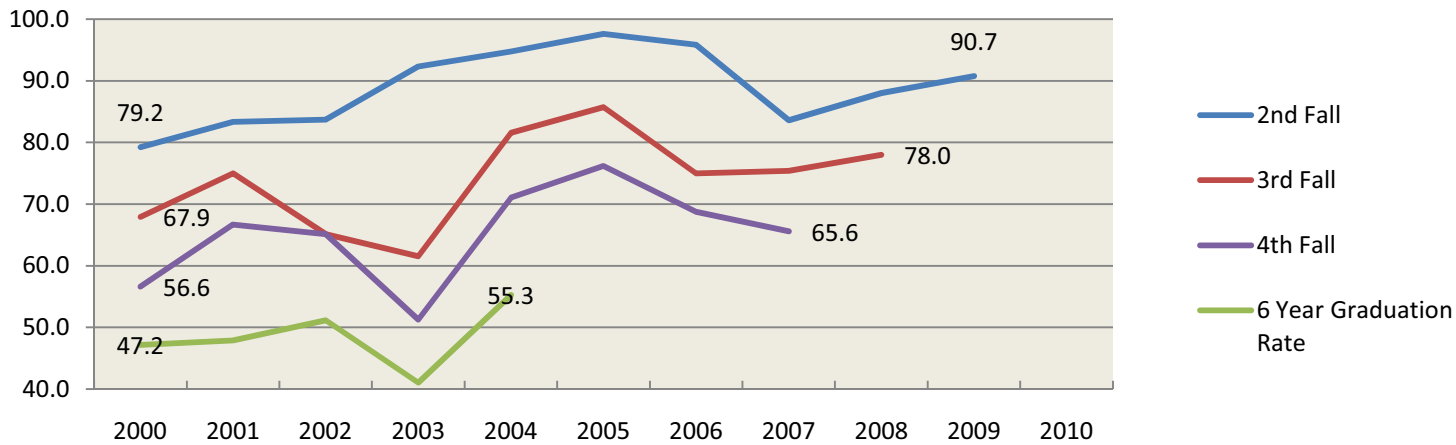


**Retention and Graduation Rates for First-time, Full Time, First Year Student Cohort--By College
2000-2010**

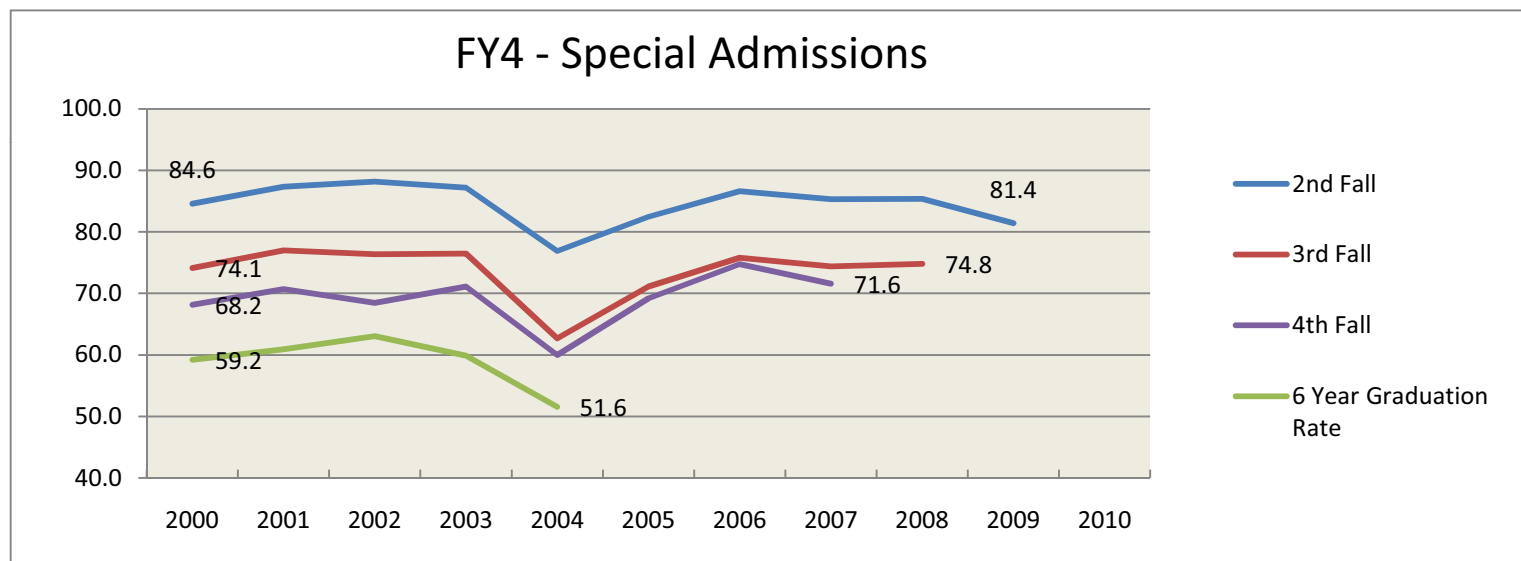
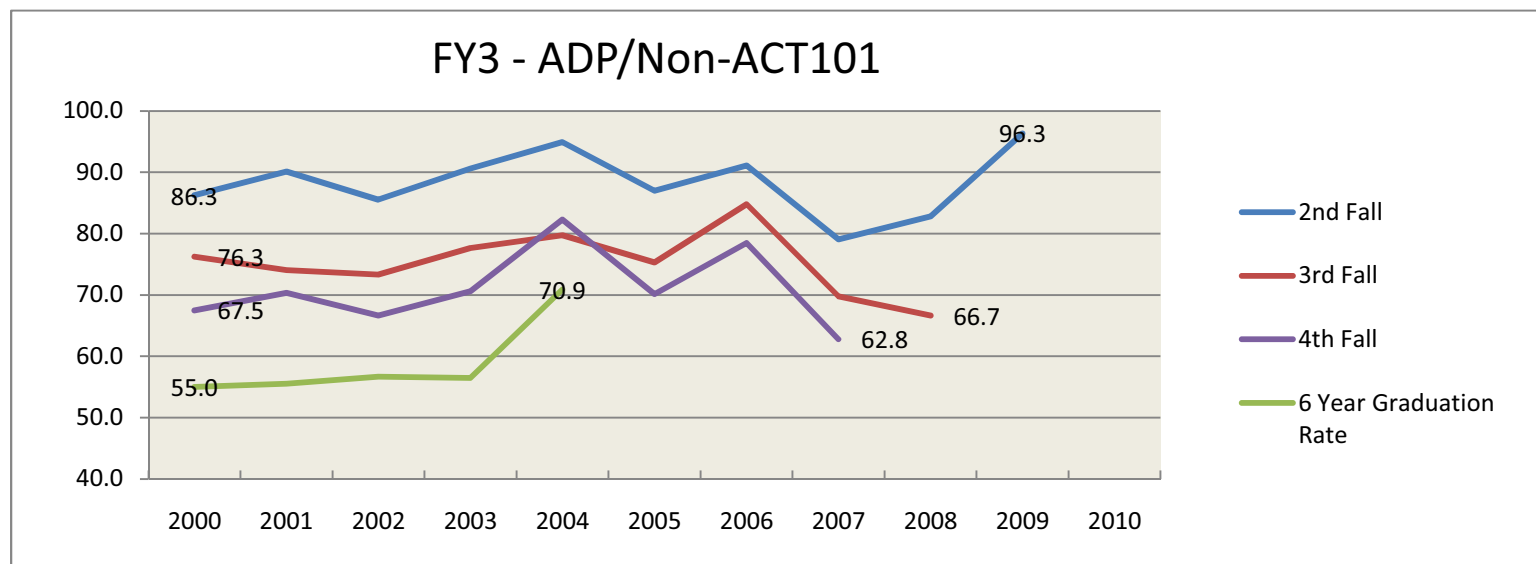
FY1 - Regular Admission



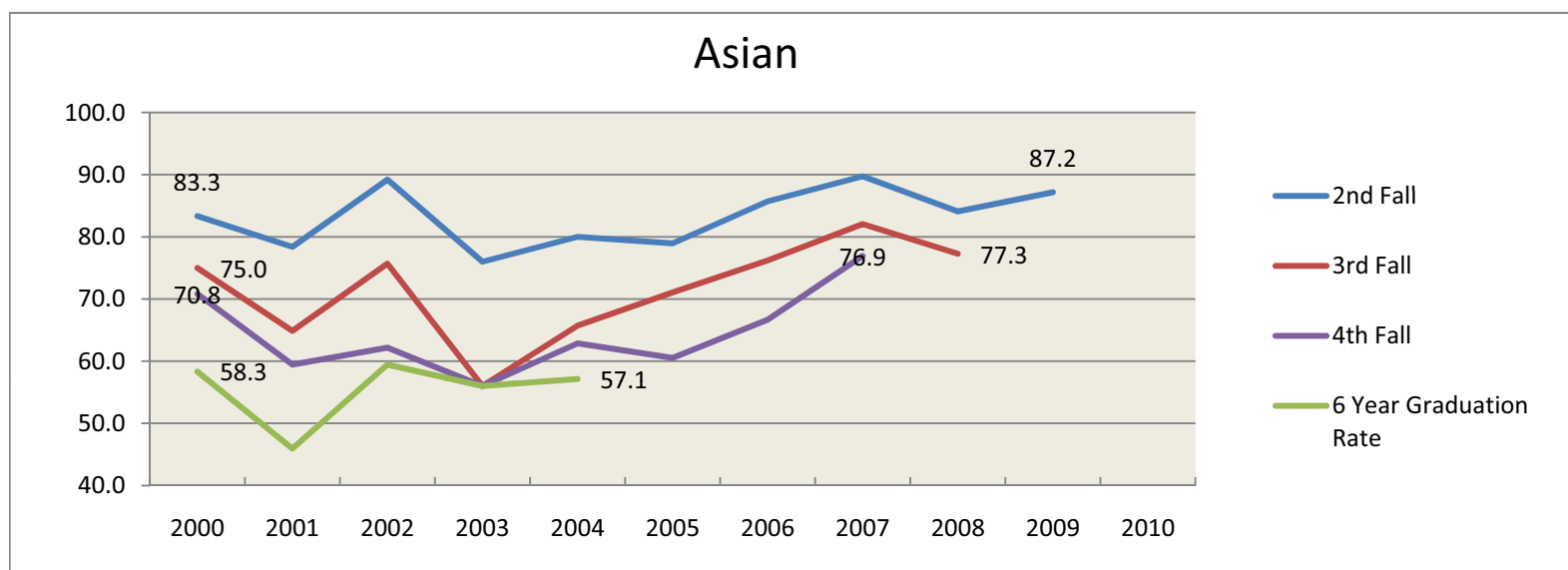
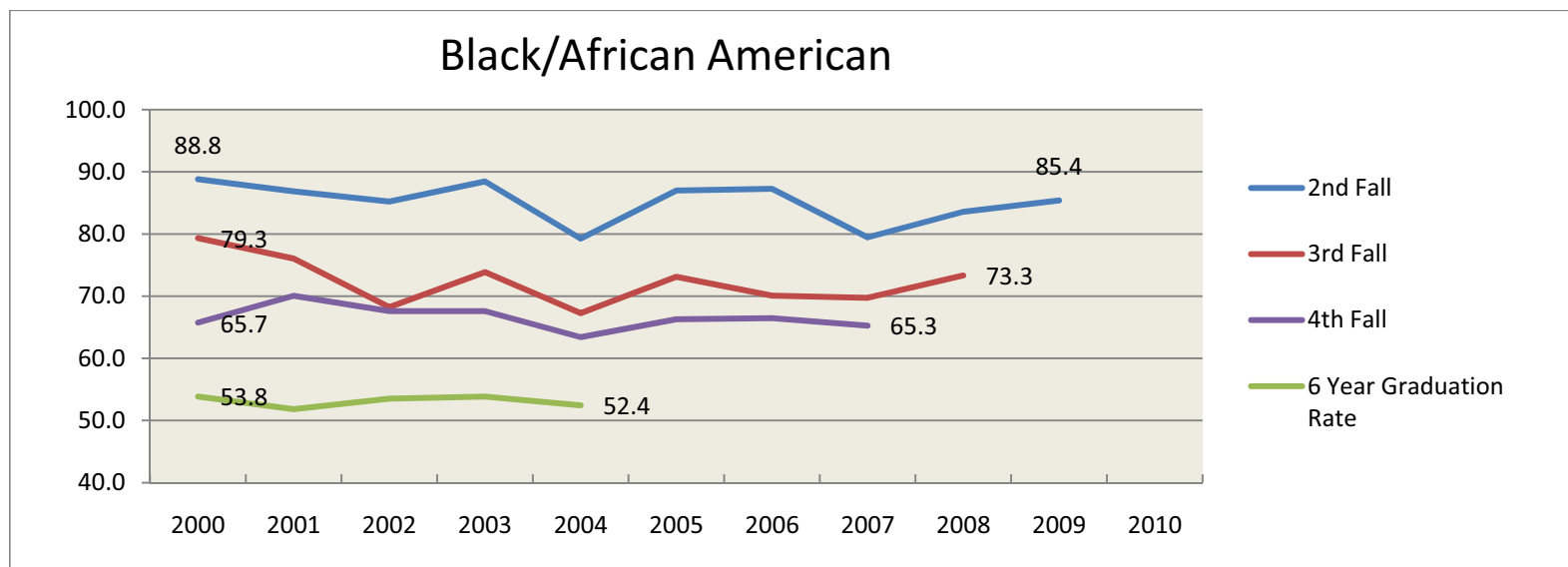
FY2 - ADP/ACT101



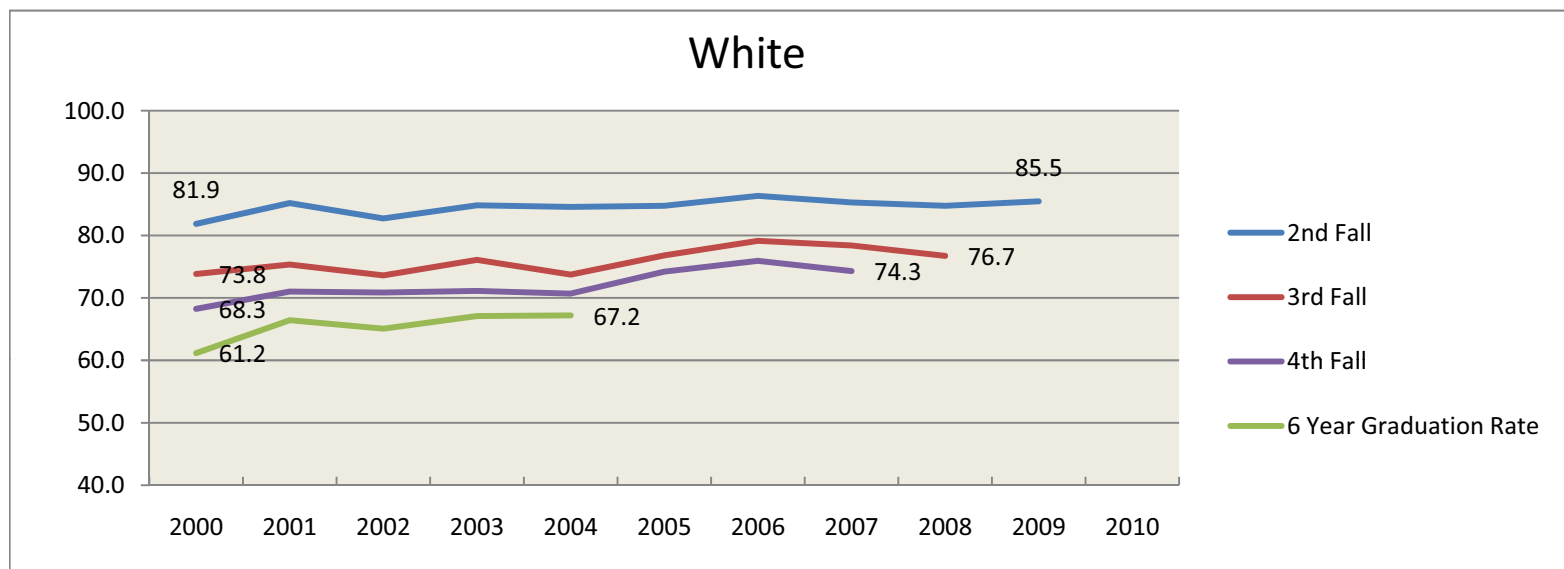
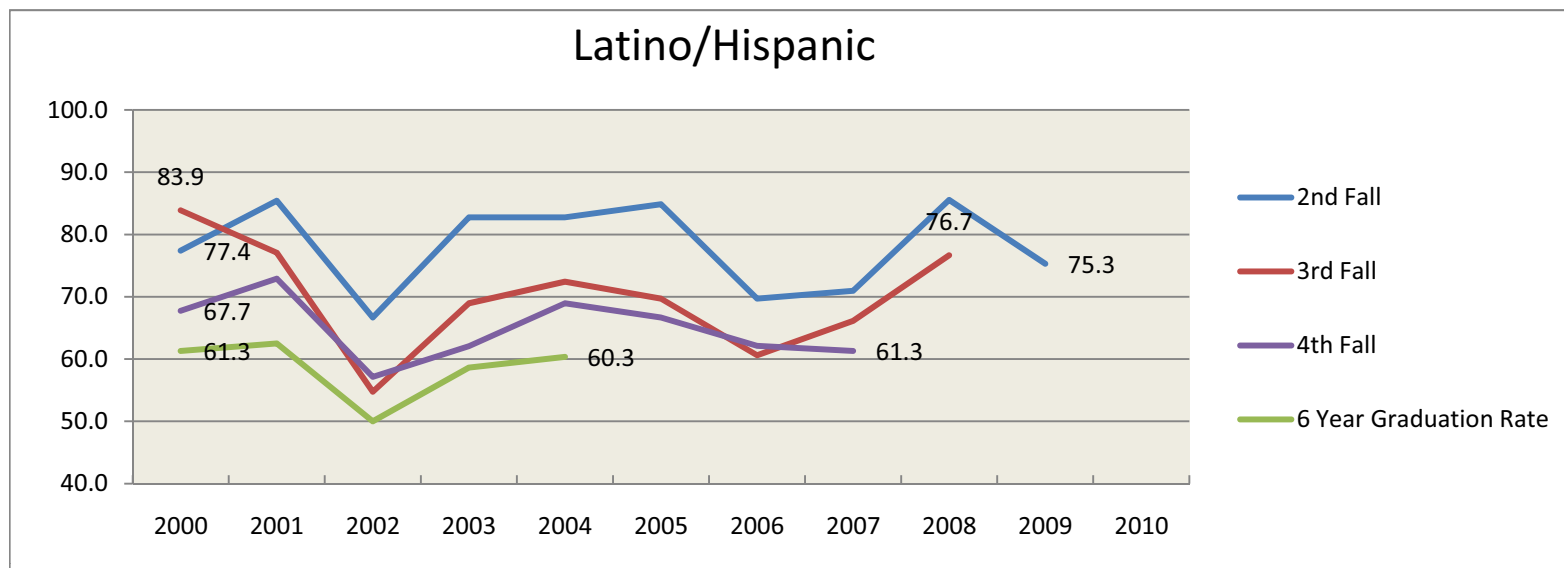
**Retention and Graduation Rates for First-time, Full Time, First Year Student Cohort--By Admission Type
2000-2010**



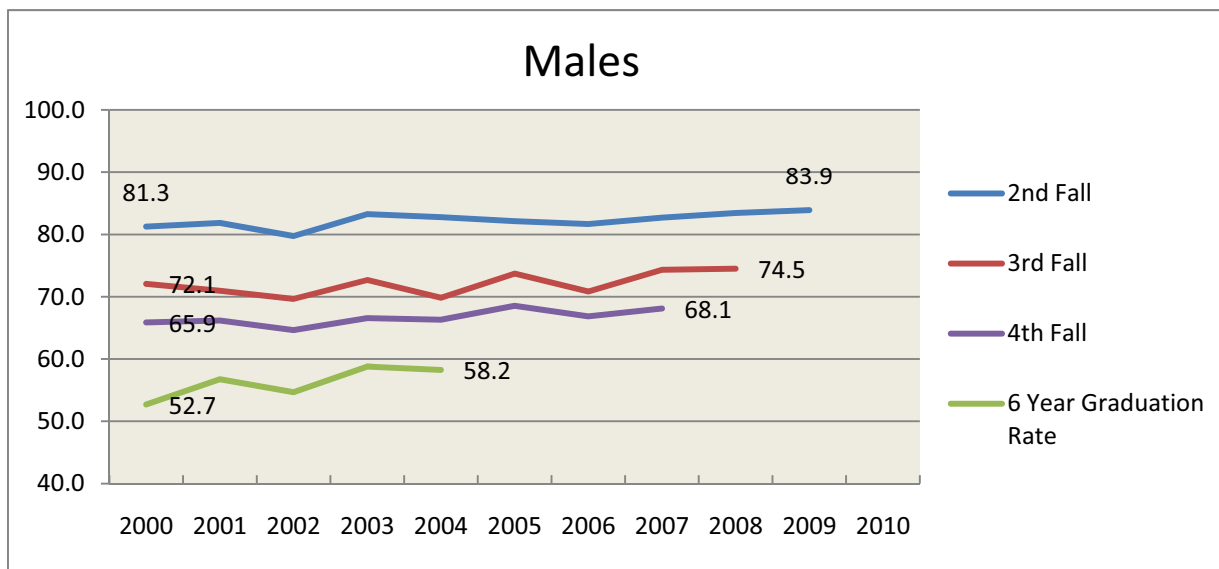
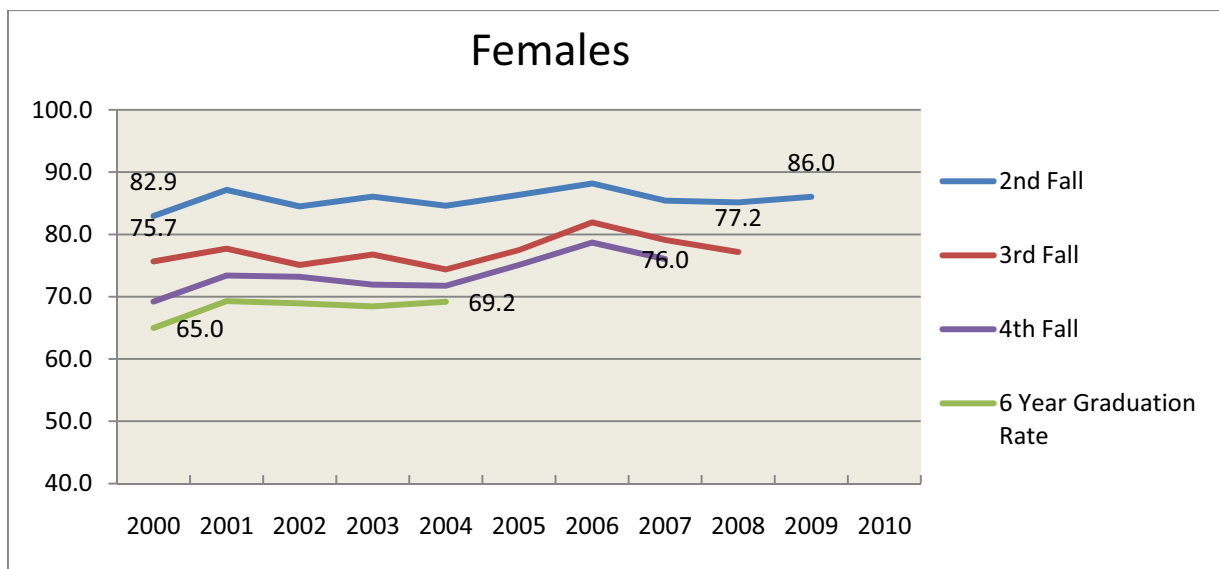
**Retention and Graduation Rates for First-time, Full Time, First Year Student Cohort--By Admission Type
2000-2010**



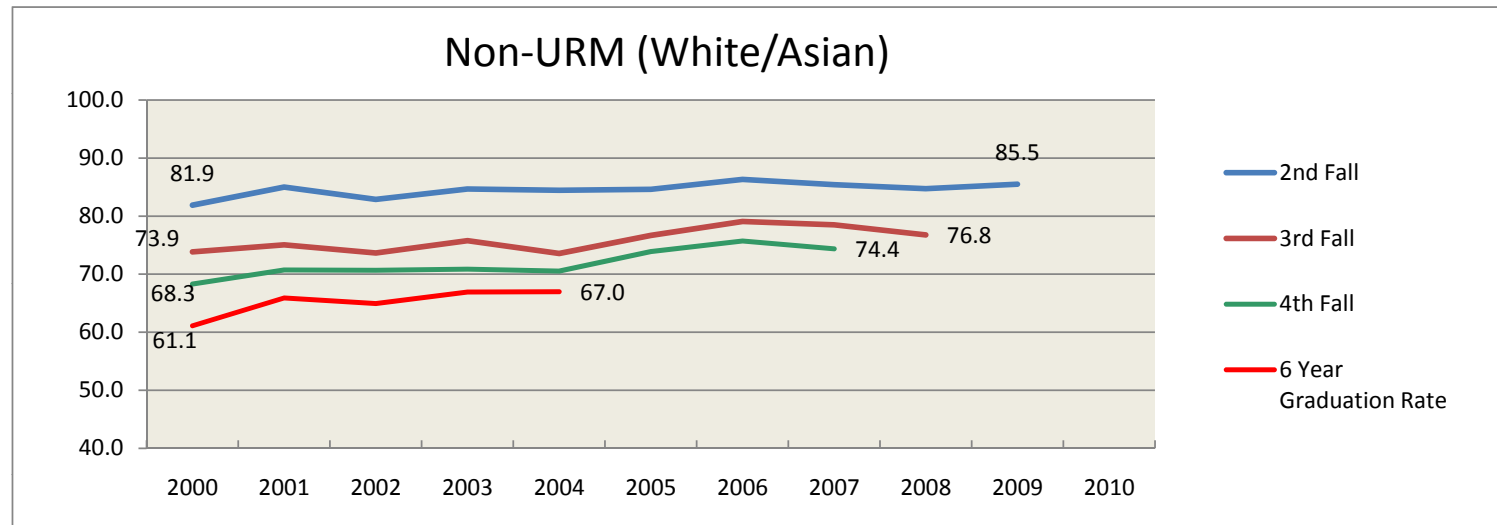
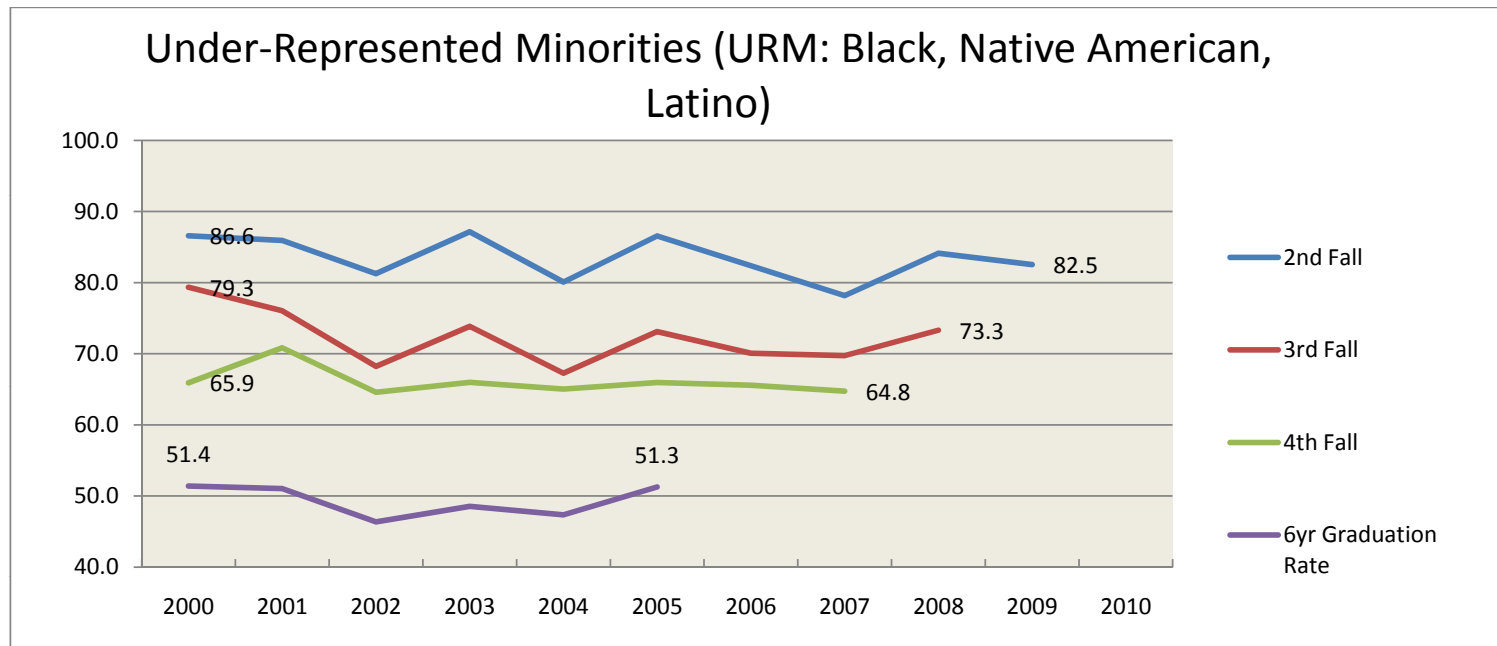
Retention and Graduation Rates for First-time, Full Time, First Year Student Cohort--By Student Ethnicity 2000-2010



Retention and Graduation Rates for First-time, Full Time, First Year Student Cohort--By Student Ethnicity 2000-2010



**Retention and Retention and Graduation Rates for First-time, Full Time, First
Year Student Cohort--By Gender
2000-2010**



**Retention and Graduation Rates for First-time, Full Time, First Year Student Cohort--
For Under-Represented Minorities
and Non Under-Represented Minorities
2000-2010**