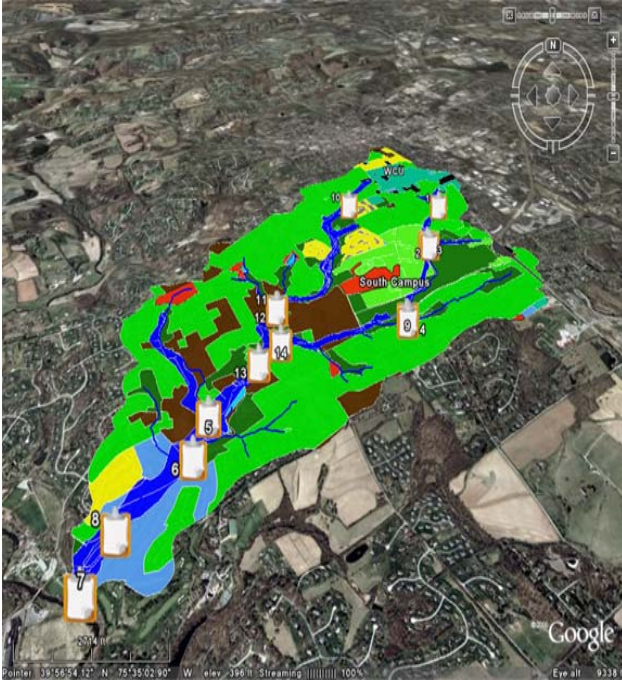


Effects of Habitat Quality on Macroinvertebrate Communities in Plum Run



View of Plum Run watershed, with sampling sites



Fieldwork primarily by Danielle Difederico (shown)

- Danielle Difederico (MS Thesis)
- 57 invertebrate taxa were identified in the Plum Run stream network
- Invertebrate communities were related to habitat quality at 14 locations
- Impaired habitat conditions were detected in both upper branches (nearest WCU's North Campus) and near the confluence of Plum Run with the Brandywine Creek
- Highest water quality and sensitive invertebrates were found within the WCU Gordon Natural Area