

# /si ɛs di/

E-NEWSLETTER  
PUBLISHED EACH MONTH  
DEPARTMENT OF COMMUNICATION SCIENCES AND DISORDERS  
WEST CHESTER UNIVERSITY



SEPTEMBER 2014

## CONTENTS

Support CSD at WCU  
New Additions to CSD at WCU  
ASHA CAA Site Visit  
News from CSD at WCU  
Invitation to Vote  
Special Events of Interest  
ASHA Higher Education Survey  
2<sup>nd</sup> Annual Elizabeth Tyson Day  
Newsletter Contest



## /si ɛs di/

shares the news of the  
Department of  
Communication Sciences  
and Disorders

West Chester University  
West Chester  
Pennsylvania

201 Carter Drive, Suite 400  
West Chester, PA 19383  
610.436.3401 (phone)  
610.436.3388 (fax)

**GOLDEN RAMS FOREVER!!!**

## WELCOME TO /si ɛs di/

Here in CSD at WCU, we are now one month into our Fall Semester 2014. We are amazed at how quickly the semester has passed thus far. We have welcomed our new B.A. students – either 1<sup>st</sup> year students or internal/external transfer students – as well as our new M.A. students. We have also welcomed two new tenure-track faculty members to our midst. We have also started to plan the events of the 2014-2015 Academic Year and look forward to our many ways to celebrate CSD at WCU. Please look at this issue of /si ɛs di/ to learn more about how you can be part of our continued celebration of who we are . . . particularly how you can contribute to our observance of the 2<sup>nd</sup> Annual Elizabeth Tyson Day. We are happy to share our CSD news with you . . . and we hope that you, in turn, will share your news with us.

Please Send News Items To . . .  
[cgunter@wcupa.edu](mailto:cgunter@wcupa.edu)  
Thank You!



The M.A. Program  
Department of Communication Sciences and Disorders  
is accredited in Speech-Language Pathology by the  
Council on Academic Accreditation  
of the American Speech-Language-Hearing Association  
(Current Accreditation Effective 2007-2015)



“LIKE” US ON FACEBOOK  
<http://www.facebook.com/CsdWcu>



“FOLLOW” US ON TWITTER  
<http://www.twitter.com/CsdWcu>



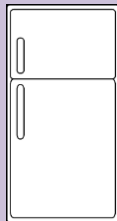
Honor the history of CSD at WCU.  
 Celebrate a special occasion.  
 Show a student you are behind her or him.  
 Thank a wonderful teacher or advisor.  
 Invest in the future of CSD at WCU.  
 Show your Golden Rams Pride!

Well, no matter what your intention, you can keep pursue that intention with a donation – in your own name or in honor of a student, faculty member, staff member, or another person – to one of our CSD at WCU scholarships. We have three scholarships, one named in honor of Vincent Suppan, one named in honor of Elizabeth Tyson, and one presented to advance Graduate Student Research. We would welcome any questions that you have about these scholarships, as well as contributions of any amount.

To contribute to these scholarships,  
 please visit the WCU Foundation web site,  
 where you can easily donate online.  
<http://www.wcufoundation.org>

*Students, Faculty, Staff:  
 For Your Use . . .*

CSD at WCU is very happy to announce two new additions to our Department . . . our brand new refrigerator and our brand new k-cup coffee maker!



The new refrigerator is located in the student clinicians' work room. You are welcome to store your food and drinks here . . . just remember to remove any items before the weekend, or these will be discarded.



The new one-cup k-cup coffee maker is located on the counter in the kitchen. You are welcome to make your coffee here . . . just remember that you need to provide your own k-cups, sweeteners, and creamers.

ASHA CAA  
 Site Visit  
 September 15 and 16, 2014

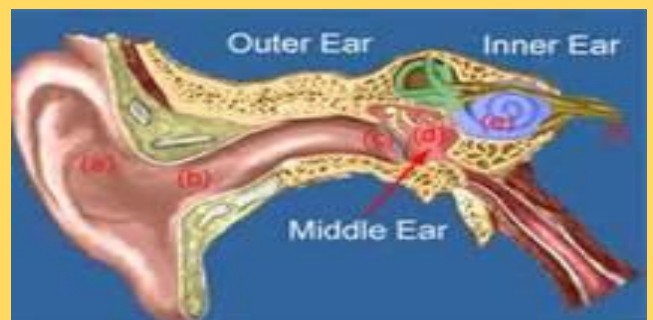


As you know, the Council on Academic Accreditation (CAA) of the American Speech-Language-Hearing Association (ASHA) provides accreditation to master's degree programs in Speech-Language Pathology. And, as you know, our own M.A. degree program here in CSD at WCU is accredited by this association. Since our current accreditation cycle is from 2007 to 2015, we are now in the process of re-accreditation of our program so that we can continue in our CSD mission.

On September 15 and 16, we were pleased to welcome a four-member team for a site visit. The team consisted of two academicians and two practitioners. The site visit is a part of the re-accreditation process. Prior to their arrival, the team reviewed our application for re-accreditation to learn about our program. They also reviewed several hundred documents that we prepared and uploaded to a secured web site to document our compliance with accreditation standards. In the course of their visit, they met with faculty members, B.A. and M.A. students, alumnae/i, off-campus clinical supervisors, and members of the public, as well as with our Provost, Graduate Dean, Health Sciences Dean, Health Sciences Associate Dean. They also inspected our files and facilities to collect further information.

We are pleased to have had this opportunity to welcome this site visit team to CSD at WCU! Their written report – which they previewed for us in their final conference with us – and our response to their report will be forwarded to the CAA, which will reach the decision about our re-accreditation early in 2015.

Sincere thanks to everyone who participated in the site visit process, with particular thanks to Dr. Mareile Koenig, M.A. Program Coordinator, for her tireless investment of her time and talent into the organization of the information that we presented. We will share the final decision of the CAA as soon as we receive that information with us . . . so please wait patiently with us for when that time arrives!





## M.A. Theses Successfully Defended

Two M.A. students successfully defended their master's theses in July 2014, Phil Doucette and Ralph Magliano. In addition, both of the students presented their work as posters at the Pennsylvania Speech-Language-Hearing Association in Pittsburgh. Phil also presented his poster in an electronic format at the Voice Foundation's Annual Symposium: Care of the Professional Voice in Philadelphia. Ralph also presented his work at WCU's Annual Research Day. Dr. Elizabeth Grillo served as the primary Faculty Advisor for both students. Other committee members included Dr. Sojung Kim, Dr. Mareile Koenig, and Dr. Michael Weiss (retired).

**Thesis Title: Phil Doucette**  
"Defining common ground: A case study investigating the effects of musical training for pitch, loudness, and rhythm on lexical stress discrimination."



**Thesis Title: Ralph Magliano**  
"Language rehabilitation from a neurological perspective: Word finding deficits."



## Fair Season . . .

It's that time once more: Fair Season. That means that Dr. Cheryl Gunter has been busy in her kitchen with her preparations of her candies and cookies (accompanied by some crafts, as well, made a bit at a time across the entire year). This year, Dr. Gunter won 20 ribbons, 10 from the Allentown Fair and 10 from the Maryland State Fair. Pictured above is her decorative cookie plate, which earned her 2nd Place at the Allentown Fair. Here is the recipe for Dr. Gunter's Maryland State Fair 1st Place, Blue Ribbon Sugar-Free Candy for you to try at home.

### Sweetened Nuts (Sugar-Free)

**Ingredients:** 1 stick margarine (or margarine substitute), 1 cup sugar substitute (such as Splenda),  $\frac{3}{4}$  cup ground cinnamon, 1 cup nuts (Dr. Gunter used pecans this time around, but almonds work nicely, also). **Procedure:** Melt the margarine on medium temperature in the microwave. While the margarine melts, mix the sugar substitute and the cinnamon. Place the mixture into a shaker. Place parchment paper on a flat surface. Sprinkle a layer of the mixture onto the paper. After the margarine has melted, place the nuts into the liquid to coat them. Place the nuts (top side up) on the mixture on the paper. Sprinkle the top side of the nuts with the mixture. Allow the nuts to dry overnight. Enjoy this guilt-free treat!

## And, More News!

Dr. Elizabeth Grillo was interviewed for the online June 2014 edition of *Advance for Speech and Hearing*. The article, "Voice Disorders and PE Student Teachers" describes her research. Please see the link and the article below:

<http://speech-language-pathology-audiology.advanceweb.com/Features/Articles/Voice-Disorders-PE-Student-Teachers.aspx>.

Dr. Elizabeth Grillo and M.A. student, Phil Doucette, received a Faculty-Student research Award from the College of Health Sciences in spring 2014. The award was used to pay for conference registration and travel expenses associated with presentations at the PSHA convention and the Voice Foundation's Annual Symposium during spring 2014.





Dr. Judith Curtin and her husband pose at Machu Picchu on their recent visit to Peru.

For more information about Peru, visit <http://www.machupicchu.gob.pe/>

*An Invitation . . .  
Students, Please Register to Vote!*

Dear Students,

We know you're busy, but we want to ask you to take a moment to make sure that you can participate in the upcoming election. The November election is approaching quickly, and if you are a citizen age 18 or older, you have the right to vote.

In order to vote in Chester County, you must register with Voter Services. If you are not yet registered, or if you wish to change your address to your campus address, there's an easy way to do so, West Chester University's TurboVote site: <http://tvote.org/1qxET6h>

The process is quick and easy. Just fill in the required information, and TurboVote will send you the forms you need to sign and return to Voter Services. TurboVote will even provide a stamped envelope. You will then be able to vote at your local polling place (or request an absentee ballot if you keep your non-campus address). You can also sign up for reminders or upcoming deadlines/dates.

No matter who you vote for, we hope you'll take the opportunity to participate in the democratic process.

Sincerely,  
The CSD at WCU Faculty



**WCU Shadows . . .  
Connecting Students & Alumni  
Job Shadow  
WCU Alumni Over Winter Break!  
Applications Due October 3!  
[www.wcupa.edu/wcushadows](http://www.wcupa.edu/wcushadows)**

We are now accepting applications for WCU Shadows 2015! Space is limited; applications are due by Friday, October 3. To get more information and apply, visit [www.wcupa.edu/wcushadows](http://www.wcupa.edu/wcushadows)

WCU Shadows is co-sponsored by the Career Development Center and the Office of Alumni Relations. Please contact Amanda Mitchell with any questions: [amitchell@wcupa.edu](mailto:amitchell@wcupa.edu) or 610.436.2501.

**Who?**

Sophomores (30-59 credits) from all majors are encouraged to apply.

**What?**

Spend one day shadowing an alumni host on the job to get an in-depth perspective about his/her career.

**Where?**

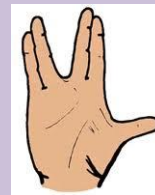
We will match you with a person working in a career that interests you, and you will meet at his/her organization.

**When?**

You and your alumni host will select one day over Winter Break in January 2015 that is convenient for you both.

**Why?**

Explore majors and careers by making connections and experiencing a "day in the life" of a professional through various conversations and activities.



**Calling All Trekkies:  
Scholarship Available . . .**

This link provides information about the annual "Starfleet Academy Scholarships" for which students can compete: <http://www.sfi.org/wp/scholarships/>. Yes, these are real scholarships with real money (up to \$1,000 awarded for each scholarship). To qualify, a student must be a Starfleet member who is an undergraduate or graduate student. Check it out!

*Special Events . . .  
You Are Invited!*

**Celebrating Rehab  
and the tireless creativity that makes the  
impossible possible.**

*Join us for an educational program  
presented by  
Bryn Mawr Rehab Hospital*

**Sunday,  
September 28, 2014  
12:00 pm – 2:45 pm  
West Chester University  
Sykes Student Union, Theatre  
(ground floor)  
110 W. Rosedale Avenue,  
West Chester, PA 19383**

**Call 1.866.CALL.MLH  
or visit [mainlinehealth.org/events](http://mainlinehealth.org/events) to  
register.**

**Cost is free, but registration is required.**

**Kevin  
Pearce**

**Former professional snowboarder**

**Kevin Pearce  
is now an  
inspirational survivor,  
sports commentator,  
motivational speaker,  
and advocate for  
brain injury and  
Down syndrome.**

*T-shirt sales at the event will  
benefit The Kevin Pearce Fund.  
This fund supports organizations  
that enrich and enhance the lives  
of individuals and families*

**To Learn Kevin's Story, Visit  
<http://www.kevinpearce.com>**

Please join the  
**West Chester University  
College of Health Sciences**  
*for the annual*

**STURZEBECKER HALL OF FAME**  
*celebration*

**Saturday, October 25, 2014**

**5:30 PM – 9:00 PM**

WCU Foundation  
202 Carter Drive  
West Chester, PA 19382

*The celebration will recognize the following*

**2014 Hall Of Fame Inductees**

**Bradley Beard, '81**

Regional President, Fairview Health Services

**Michael Moyer, '83**

Executive Director, National Wrestling Coaches Association

**Maurene Polley, '65**

Retired, Field Hockey Coach, Villa Maria Academy High School

Sturzebecker Scholarship awards will be presented to:

**Nicholas April**  
*Athletic Training*

**Mariah Francis**  
*Public Health*

**Marissa Giovinazzo**  
*Nursing*

**Allison Casola**  
*Public Health– Graduate*

**Jillian Jackson**  
*Communication Sciences  
and Disorders*

**Cody Mellinger**  
*Kinesiology*

**Tickets: \$75 each • Table of 10: \$750**

To purchase tickets:

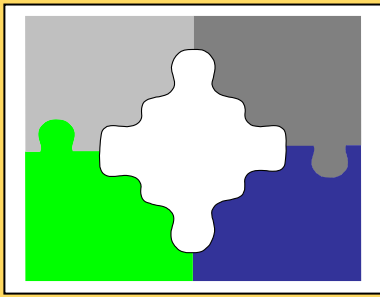
**[www.wcufoundation.org/SturzebeckerHOF](http://www.wcufoundation.org/SturzebeckerHOF)**

*For additional information:*  
610.430.4150

***Congratulations . . .***

As you can see from the invitation above, our own CSD B.A. student Jillian Jackson has been named one of the 2014 Sturzebecker Scholars. These scholars represent "the best of the best" of West Chester University College of Health Sciences students. Sincere congratulations to Jillian for this well-deserved honor, and best wishes for your future work!

*Special Events . . .  
You Are Invited!*



Do you have Spasmodic Dysphonia, and are you looking for the missing pieces of the puzzle?

*Do you have unanswered questions?*

Do you ever feel that YOU are the only one?

*Are you interested in keeping up with the latest developments in treatment and research?*

**NSDA's Greater Chester/Montgomery county area  
Spasmodic Dysphonia Support Group can help fill in the pieces!**

The NDSA Greater Chester/Montgomery County Area Spasmodic Dysphonia Support Group is looking for people interested in becoming members. There is never any cost to be part of an NDSA Support Group. Whether you'd like to hear about the latest research and treatment options for SD, ask other patients about how they get by on their jobs and cope on a daily basis, or simply listen to others with a voice that sounds like yours, the Greater Chester/Montgomery County Support Group is a valuable resource.

Our are held in the Board Room of the Phoenixville Area Hospital  
At 826 Main St. (Medical Office Building 2) 3<sup>rd</sup> Floor, Phoenixville, PA

*If you are interested in attending and/or want more information on Spasmodic Dysphonia, please contact:*

**Cathie Leister** (at 484-948-0394 or [cathieleister@comcast.net](mailto:cathieleister@comcast.net)) or

**Fred Hosier** ([fhosier@gmail.com](mailto:fhosier@gmail.com))

*The Greater Chester/Montgomery County Area Support Group is sponsored by the  
National Spasmodic Dysphonia Association (NSDA)*

The NSDA is a non-profit organization dedicated to serving the needs of those affected by spasmodic dysphonia. The main objectives are to advance research, to build awareness, and to sponsor patient and family support groups and educational programs. The NSDA is the only organization dedicated to helping people with Spasmodic Dysphonia.

Visit our website at [www.dysphonia.org](http://www.dysphonia.org) for more information and resources.



**WCU**  
**WEST CHESTER**  
**UNIVERSITY**

## Alumni Event

Join us on

**Saturday, October 18th**

**11:00 am – 2:00 pm**

*for the Homecoming Weekend*

### **COLLEGE OF HEALTH SCIENCES' REUNION**

Reconnect with old CHS friends and colleagues while attending the **R-Lot Social** taking place before the Homecoming Game. The College of Health Sciences will have reserved tables as part of this event.

Invite your former students, friends, and family members! The cost is \$10 per person (*please bring cash to pay upon arrival*) for food, beer, games, giveaways, and much more.

Visit the Alumni Association ([www.wcualumni.org](http://www.wcualumni.org)) to view the complete schedule for the weekend.

*We hope to see you there!*



IN PARTNERSHIP WITH:



NATIONAL STUDENT SPEECH LANGUAGE HEARING ASSOCIATION

**WCU CHAPTER OF  
NSSLHA  
ANNOUNCES THE  
"NSSLHA CAR WASH"  
WITH PROCEEDS TO SUPPORT  
NSSLHA PROJECTS**

**October 12, 2014  
10:00 a.m. to 3:00 p.m.**

**In the Lot of the  
High Street**



**West Chester, PA**

**THANK YOU FOR YOUR SUPPORT!**



**Reminder . . .  
FALL SEMESTER  
ACADEMIC ADVISEMENT WEEKS  
FOR CSD STUDENTS  
ARE THE WEEKS OF  
09-22-14 & 09-29-14**

**If you have not yet set your  
advisement appointment  
with your academic advisor,  
please do so ASAP!**

Advisement appointments are mandatory for students in the B.A. curriculum. Students in the Pre-Graduate Certificate curriculum and the M.A. curriculum are also welcome to set appointments with their advisors.

**2012-2013**

**Academic Year  
CSD Education Survey**

Each year, ASHA (American Speech-Language-Hearing Association) and CAPCSD (Council of Academic Programs in Communication Sciences and Disorders) collaborate to administer and analyze the results of the CSD Education Survey. CSD at WCU has recently received two summaries of results from the CSD Education Survey for the 2012-2013 Academic Year. One of the summaries reports data from across the United States, while the other of the summaries reports data collected specifically from Pennsylvania.



HIGHER EDUCATION DATA SYSTEM

Students, particularly B.A. and Pre-Graduate Certificate students, may find some of these data of interest. For instance, several data tables report the responses to questions about applications and admissions to master's level SLP programs. Specific data included the number of slots available in master's level SLP programs, the proportion of slots taken by new master's level students, the average number of slots available in master's level SLP programs, the average and range of GPAs of new master's level students, and the reported reasons for limitations in the number of slots available. Comparable data are available for Au.D. programs.

If you are interested in a copy of the national and/or Pennsylvania report, please send an e-mail to [cgunter@wcupa.edu](mailto:cgunter@wcupa.edu). In the meantime, did you know:

--In this period, Pennsylvania was home to 14 master's level SLP programs.

--In this period, the 12 of 14 PA programs that responded to the survey collectively reported the receipt of 2798 applications for admission.

--In this period, the 12 of 14 PA programs that responded to the survey collectively reported 387 available slots for students.

--In this period, the 12 of 14 PA programs that responded to the survey collectively reported approval of 657 students for admission to the available slots.

--In this period, approximately 99.48% of available slots in PA master's level SLP programs were filled. Nationwide, the two states with the lowest proportion of available slots in master's level SLP programs that were filled were Vermont (with 77.78% of slots filled) and Illinois (with 81.5% of slots filled).

## *Honoring Our "Miss Tyson"*

**2<sup>nd</sup> Annual  
Elizabeth Tyson Day  
December 1, 2014**



**CSD at WCU  
invites you to honor our "Miss Tyson"  
with an act of service dedicated to her memory.**

**In 2013, CSD at WCU celebrated the 1<sup>st</sup> Annual Elizabeth Tyson Day" to honor Professor Elizabeth Tyson, who founded the "Speech Clinic" on the West Chester University Campus in 1923. We selected December 1, her birthday, as the day to honor her every year. In 2013, CSD at WCU celebrated this special occasion with an Open House that many of you attended. In 2014, CSD at WCU invites you to observe this special day to honor our "Miss Tyson" with an act of service dedicated to her memory. Our aim: to have at least 91 (the number of years our clinic has been in existence) acts performed . . . and preferably 191, 291, 391, 491, or even more acts of service performed to honor her legacy. The process is simple:**

- Select the act of service that you will perform.**
- Perform your act of service between October 1<sup>st</sup> and November 30<sup>th</sup>.**
- Write a short description of your act of service on the form located in this newsletter.**
- Deliver the form to the "Elizabeth Tyson Day" box, located in the CSD at WCU lobby.**
- If you cannot deliver the form in person, send it by e-mail or postal mail to CSD.**
- Our e-mail address is [cgunter@wcupa.edu](mailto:cgunter@wcupa.edu).**
- Our postal mail address is 201 Carter Drive, Suite 400, West Chester, PA 19383.**

**Thank you for your dedication and participation!**





## An Act of Service for Our "Miss Tyson"

MY NAME

---

MY STATUS

WCU Student  WCU Faculty  WCU Staff  WCU Alumna/us  WCU Parent  WCU Friend

MY ACT OF SERVICE

(Please Describe Your Service In 50 Words Or Fewer)

---

---

---

---

---

---

---

---

---

---

**Thank you for your information!**

The acts of service for "Miss Tyson" will be displayed in CSD at WCU.

Descriptions of some acts of service will be included in our January 2015 issue.

Names of everyone who submits a description will also be included in our January 2015 issue, as well as entered into a drawing for a special prize (Gift Card).

## /si ɛs di/ CONTEST

As you know, periodically /si ɛs di/ includes a contest for our readers, who may compete for a special prize. This issue of our CSD at WCU newsletter features such a contest. So, readers, are you ready? If so, here are the simple rules for our newest contest: (a) Complete the Word Search Puzzle. To do this, locate each word on the list in the puzzle, then circle each word clearly. (b) Once you have completed the puzzle, return it to Dr. Cheryl Gunter. You may return a paper copy in person or a scanned copy by e-mail. (c) Be sure to submit your completed puzzle by Wednesday, October 8, 2014, by 5:00 p.m. (d) If more than one person has successfully found and circled each of the words on the list, then the winner of the prize will be selected by random draw. The prize will be a professional reference book valued at \$50.00. So, if you want a chance for some fun relaxation, please enter our newest contest!



© Can Stock Photo - csp3272022

# CSD at WCU Word Search

C D S E M J A P S T M B D U Y D T D M S J Y H H X  
 O O K C Y M L I R I Q M E L R G R S H W R L E Y D  
 D E N V O D W J S E P A L W A N O C Y A T A T I Y  
 E V S S F P S D T A V K A R N I W L N U R F S K M  
 O A X A U E E B V S H E Y G I V C I O I Z O Y C U  
 F L N I N L I O G N A P N L L U L A N N R B O I E  
 E U H G C M T N F H Q I A T P P V G F D O M A V Y  
 T A P A T C J A L P R C S L I O L U E O M H I F J  
 H T S H I Z L S T E R B W C C O W R F U I T P H E  
 I I Y P O U S I T I P A S K S A N V N C A N X I S  
 C O M S N N P T N A O I C S I G I I F T A L A I N  
 S N O Y A B U A T I D N C T D P C R N S U A R R E  
 K C T D L L G H J R C N G M I A S E H N D N K W C  
 N T C B C Z O P E Y O I V O T C M U G T H G C R I  
 C Q E J Y L S T Z B S W A I L G E H N T R U R Y L  
 W A G B O H N B R S T L O N U B G O I M H A H S A  
 L P N G A I X A R P A N P A M Y N C R Y F G S V Y  
 G C Y I N T E R V E N T I O N S P E E C H E D Y K  
 Z Q R R E V I T A N R E T L A W C U T V T J R B D  
 E J A A J S W L E D U C A T I O N K T U O C C C I  
 I N L D I F F E R E N C E M I D K S U Y R I I Y O  
 T R A N S D I S C I P L I N A R Y X T I F Y C V U  
 C V B S Q L N O Q Z N X R T A N Y E S J W A C E I  
 Y G O L O I D U A G N O I T A L U C I T R A E H M  
 I E E K F R G V E H L J N O T F S F P S T T Y D V

ALTERNATIVE  
 APHASIA  
 APRAXIA  
 ARTICULATION  
 ASHA  
 AUD  
 AUDIOLOGY  
 AUGMENTATIVE  
 CCC  
 CHS  
 CLINICIAN  
 CLUTTERING  
 CODEOFETHICS  
 COMMUNICATION  
 CONSULTATION  
 CRANIOFACIAL

CSD  
 DEAF  
 DELAY  
 DIFFERENCE  
 DISORDER  
 DYSARTHRIA  
 DYSPHAGIA  
 EDUCATION  
 EVALUATION  
 HEARINGLOSS  
 INTERDISCIPLINARY  
 INTERVENTION  
 LANGUAGE  
 LARYNGECTOMY  
 LICENSE  
 MULTIDISCIPLINARY

MYOFUNCTIONAL  
 NSSLHA  
 PATHOLOGY  
 PHONOLOGY  
 PREVENTION  
 PSHA  
 SCOPEOFPRACTICE  
 SLP  
 SPEECH  
 STUTTERING  
 TBI  
 TRANSDISCIPLINARY  
 VOICE  
 WCU