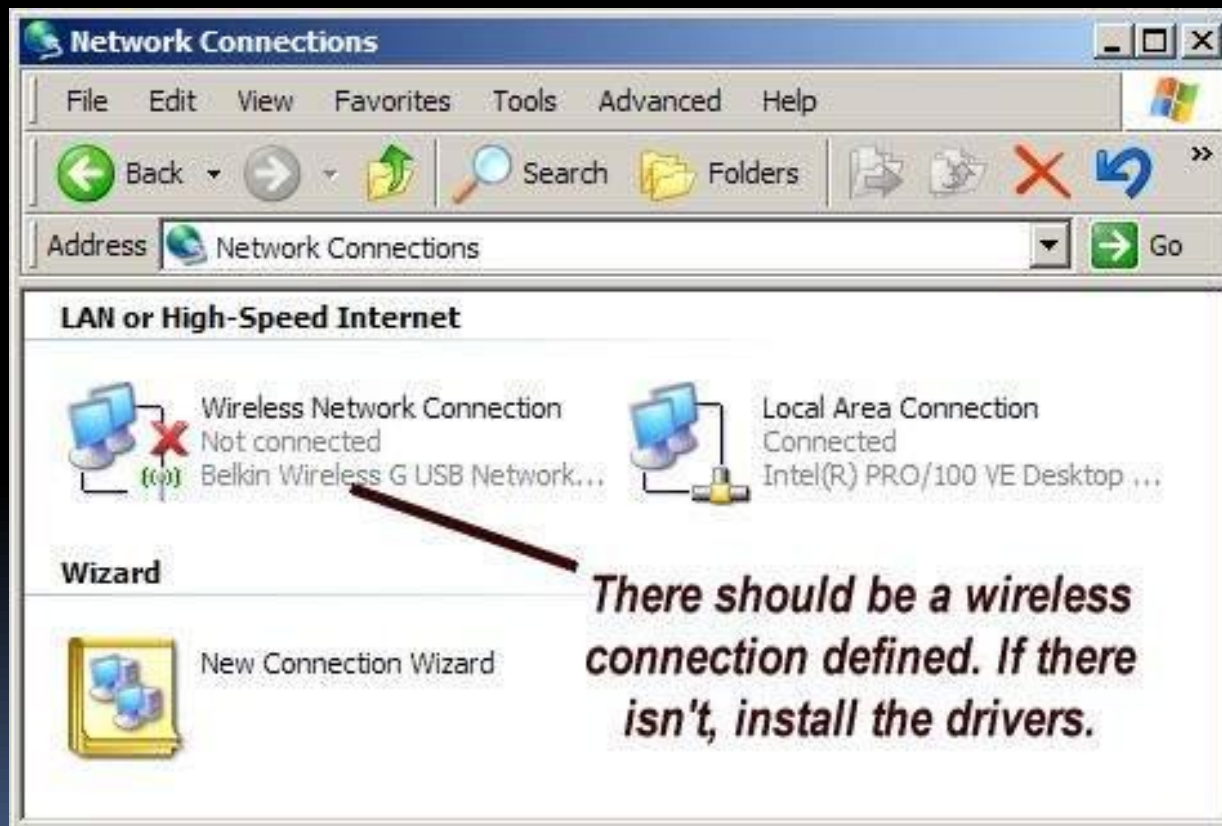


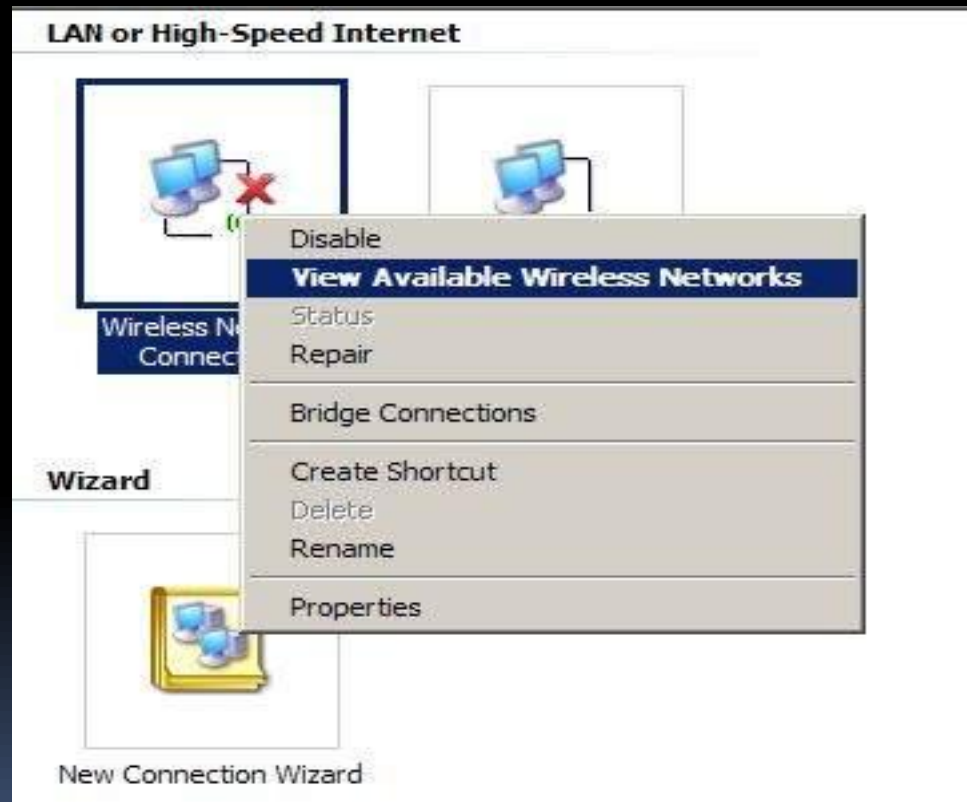
Adding a Wireless Connection Using Vista

- *Before starting, unplug your PC from the Ethernet network*
- *Click **Control Panel > Network Connections***



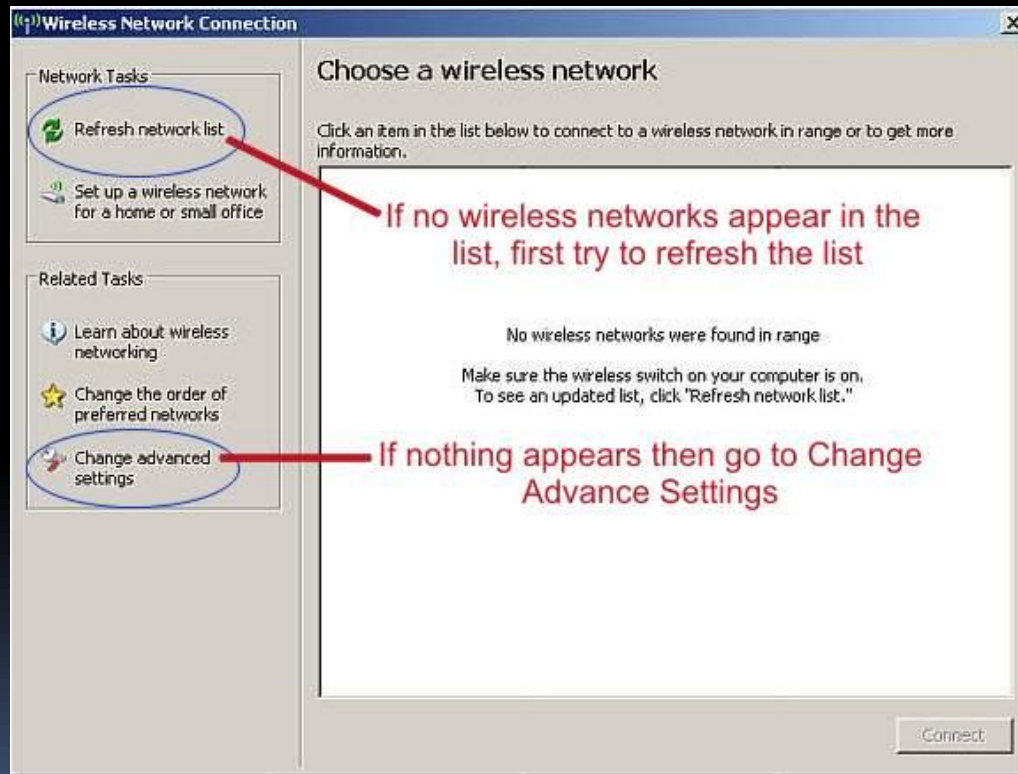
Configuring Wireless for Vista

- *Right click the **Wireless Network Connection***
- *Select **View Available Wireless Networks** from the drop down box*



Configuring Wireless for Vista

This screen displays a list of wireless networks it detects. There could be a number of them or there may be none. What it needs to display is **RamNet**.



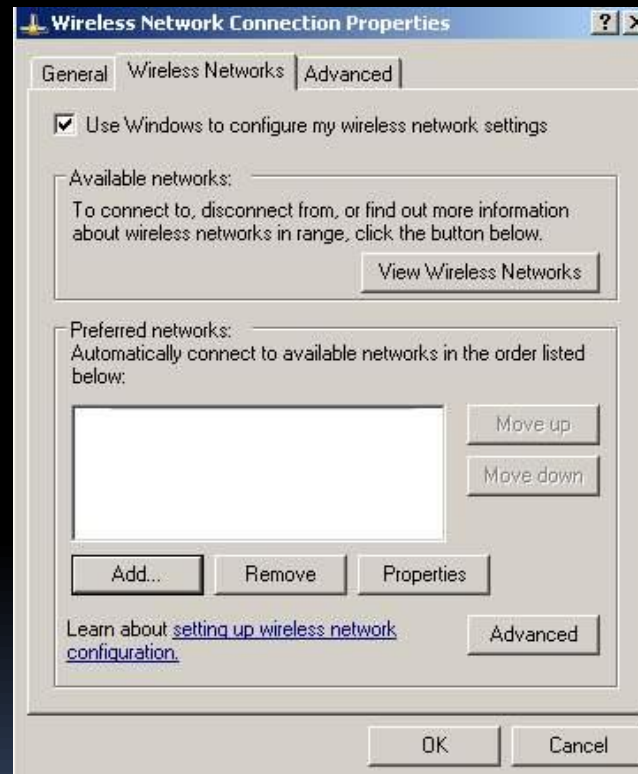
Configuring Wireless for Vista

Than example that shows **RamNet** detected as well as a **Print Server**. The bars to the right show the signal strength. *RamNet is 5 bars so it is a strong signal.* Typically in the work area, all 5 bars will be filled.



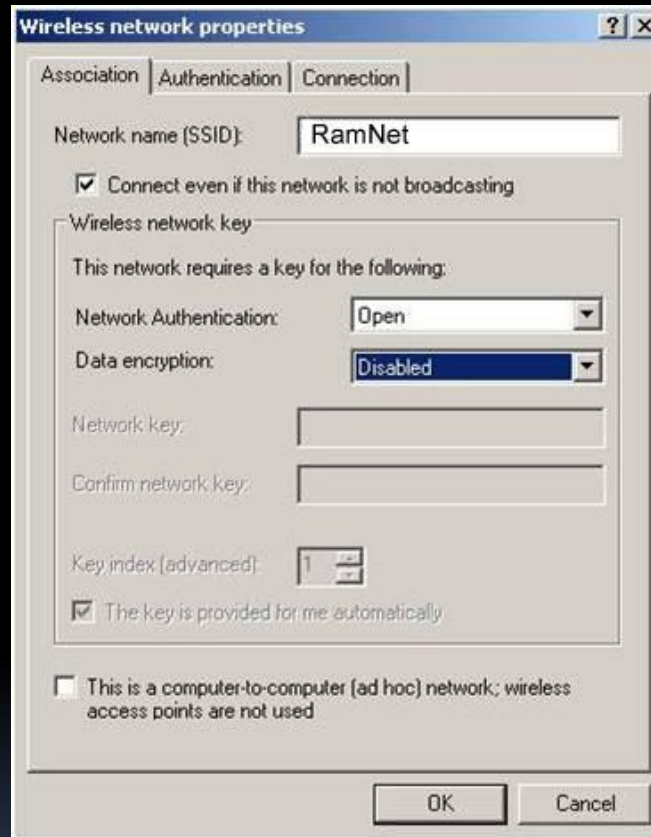
Configuring Wireless for Vista

- Occasionally, the reason RamNet does not appear in the list is simply because it hasn't been defined on that computer, in which case all you need to do is add RamNet.



- Click on the **Add...** button to start to define **RamNET**

Configuring Wireless for Vista

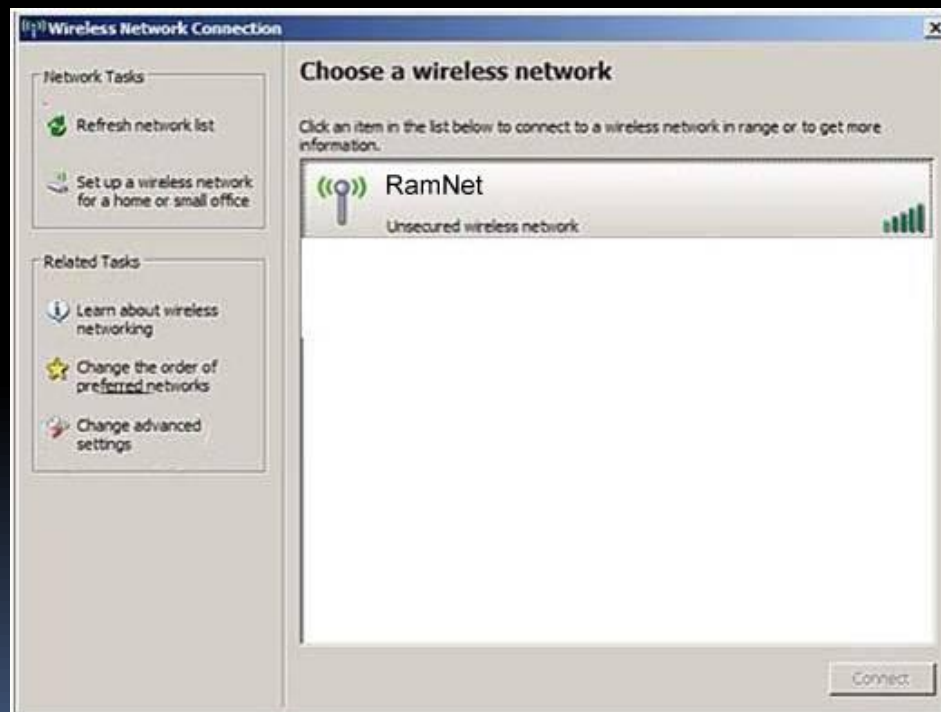


- In the box that comes up set the **SSID** to **RamNET**
- **Network Authentication** to **Open**
- **Data Encryption** to **Disabled**

Configuring Wireless for Vista

- Click **OK** to define the network connection
- Again try **View Wireless Networks**

RamNet displays as shown below





Configuring Wireless for Vista

- When you see the network, click on it to select it and then click on the **Connect** button.
 - When it connects, you should see an icon on the bottom right of your screen that shows that wireless is connected
 - Disable the Ethernet connection or unplug the cable so the browser will use the wireless connection
 - Open a browser and you should see the Wireless Zone login screen
- 