

Information Security Center at WCU

Dr. Zhen Jiang
Associate Professor, Computer Science Department
Directorate, Information Security Center
Email: zjiang@wcupa.edu

NATIONAL SECURITY AGENCY



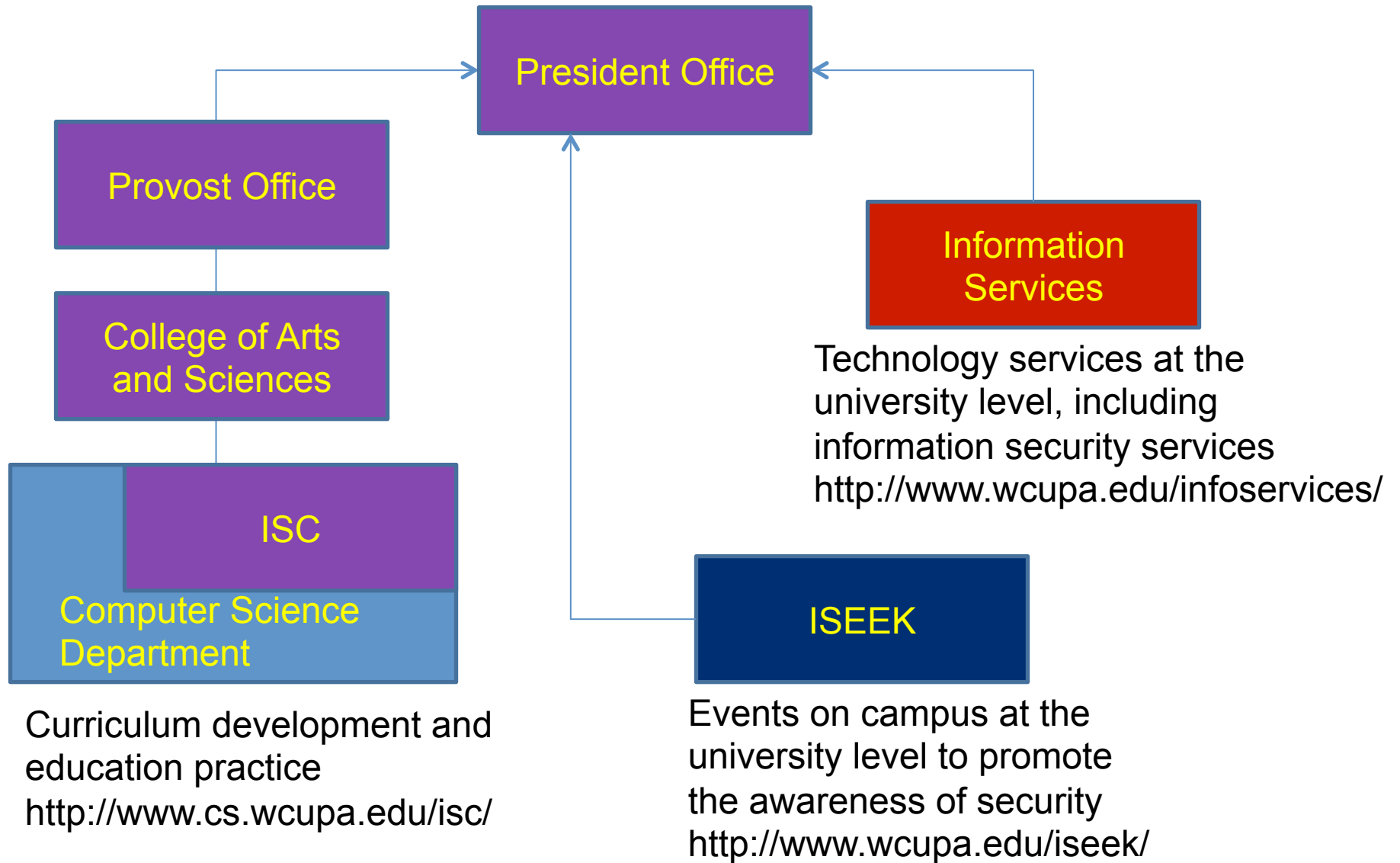
CENTRAL SECURITY SERVICE

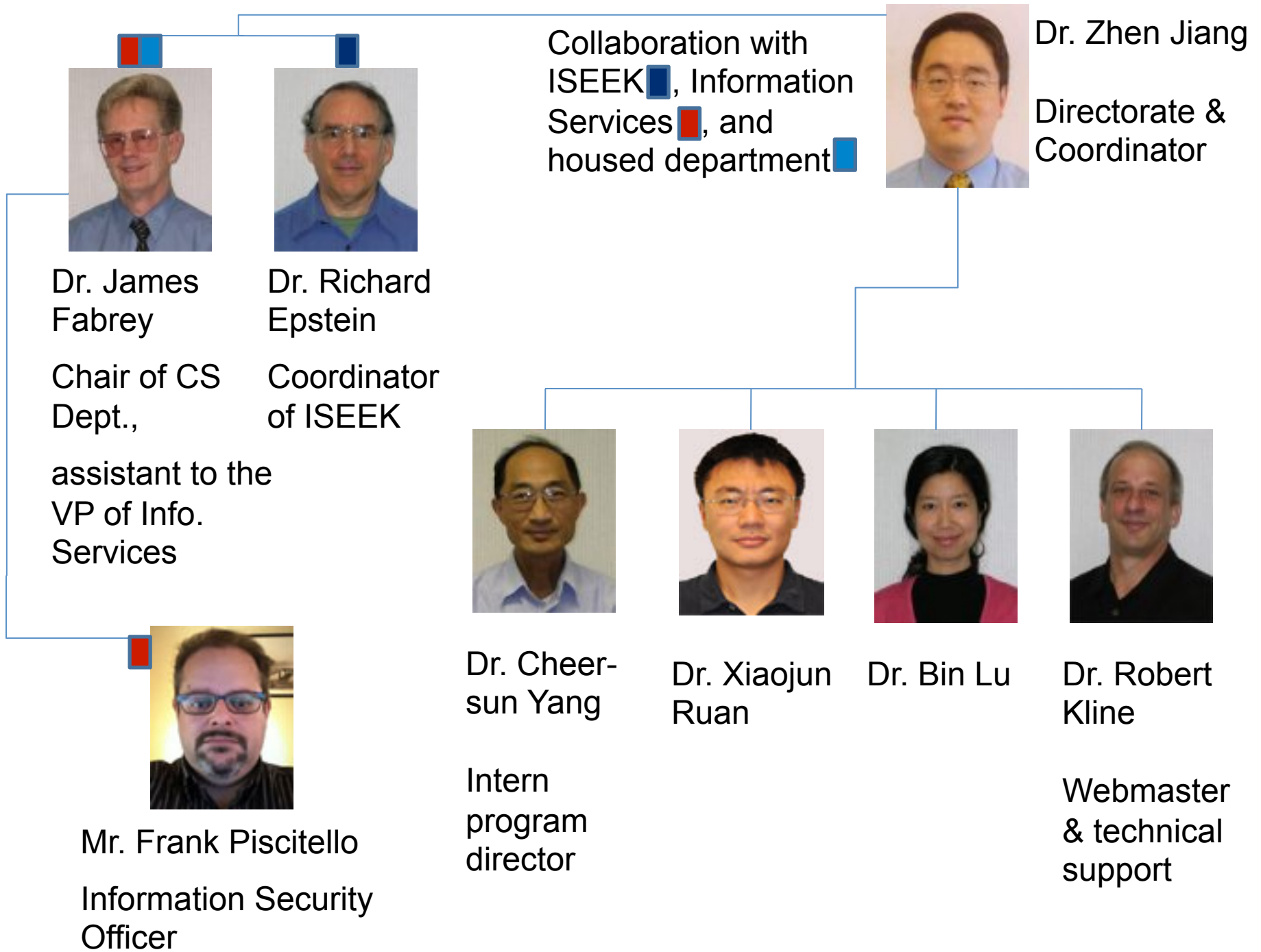
Celebrating 60 Years of Defending Our Nation, Securing The Future.

Mission

http://www.cs.wcupa.edu/isc/isc_mission.pdf

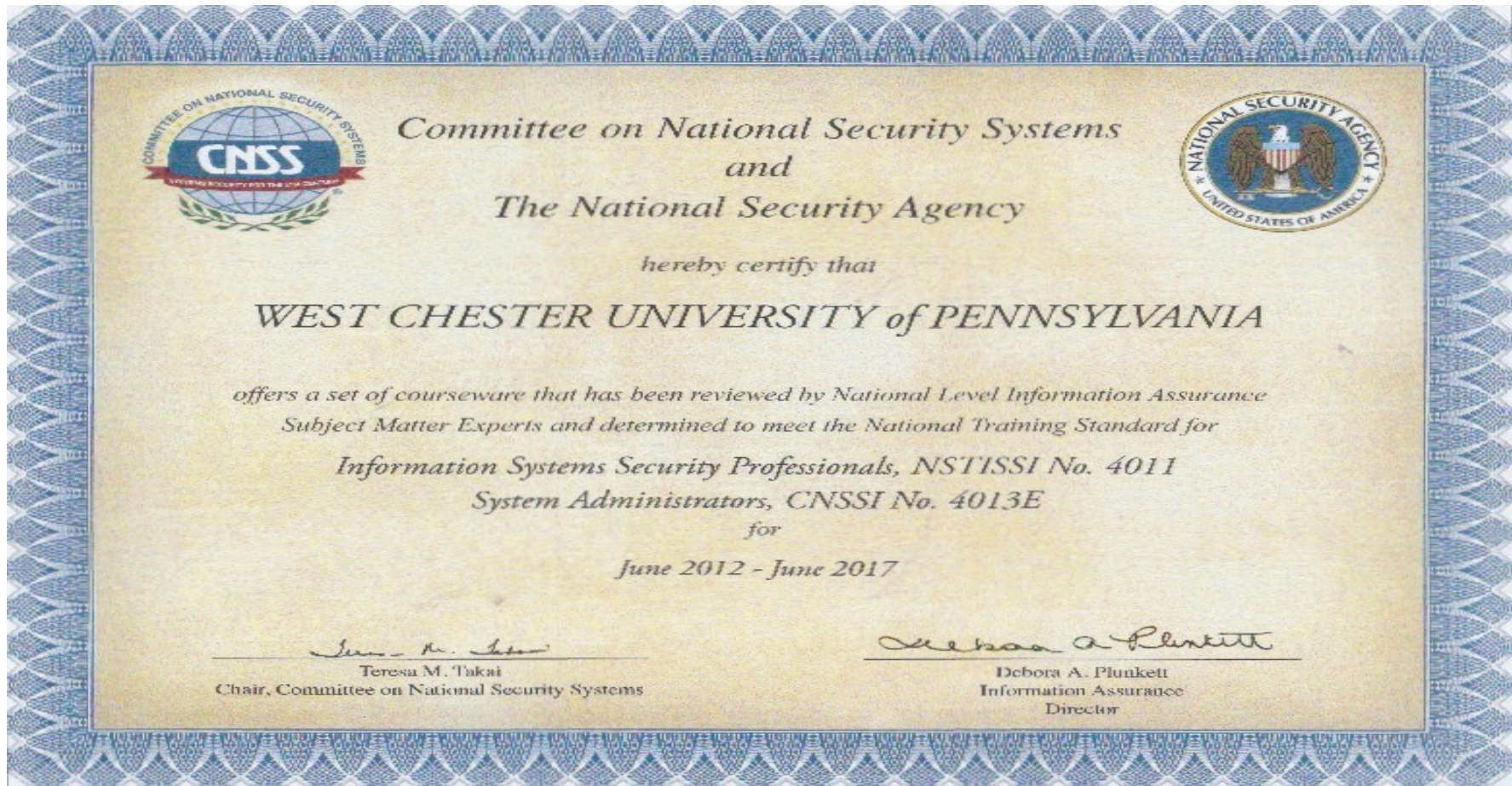






National recognition

https://www.nsa.gov/ia/academic_outreach/nat_cae/institutions.shtml



NATIONAL SECURITY AGENCY



CENTRAL SECURITY SERVICE

Celebrating 60 Years of Defending Our Nation, Securing The Future.

Strategy plan



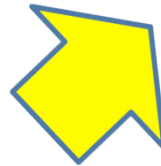
Class learning:
Computer Security
in various topics



Lab modules



Opportunities
with
research
inspired
materials



Intern
programs



Simulation & Modeling

- Real-time, hardware-in-the-loop simulation software
- Signal Propagation Models
- Antenna Models
- Interference Models
- Platform Motion Models
- GPS, GLONASS, Galileo, WAAS, and Inertial Navigation Sensors
- Testing and analysis of navigation sensors



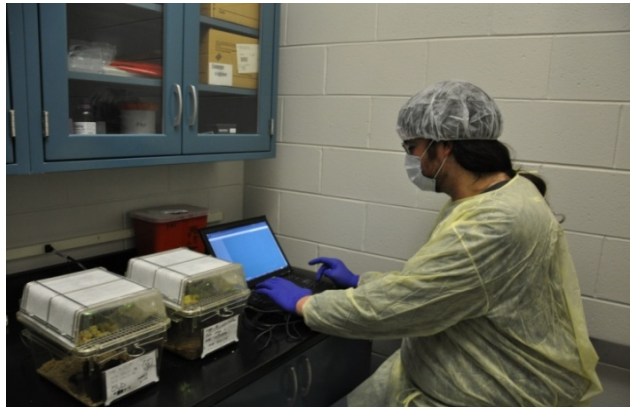
Gnostech's mission planning engineering expertise supports the F-35 Strike Fighter.

Network & Security Engineering

- Certification and Accreditations
- System security assessments and risk reports
- Use of DoD-approved tools
- Conduct of DITSCAP, DIACAP, and DODIIS processes
- Preparation of SSPs, SSAAs, SIPs, DIPs and other accreditation documentation
- Security Evaluations and Enhancement Recommendations
- Cross Domain Solution Evaluation, Integration, and Development



Learning model



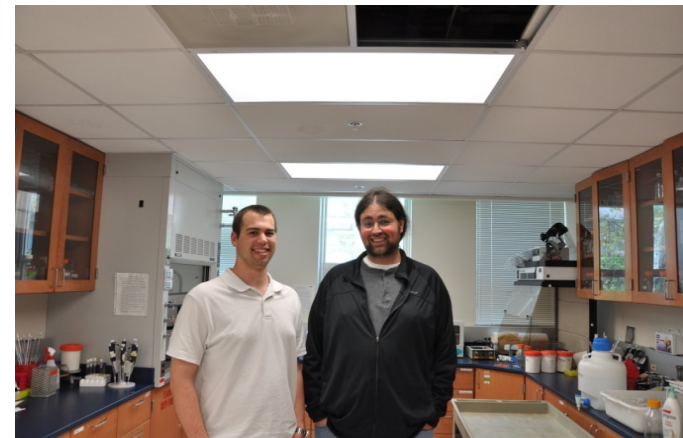
Hands-on experience in class project



REU in granted research projects

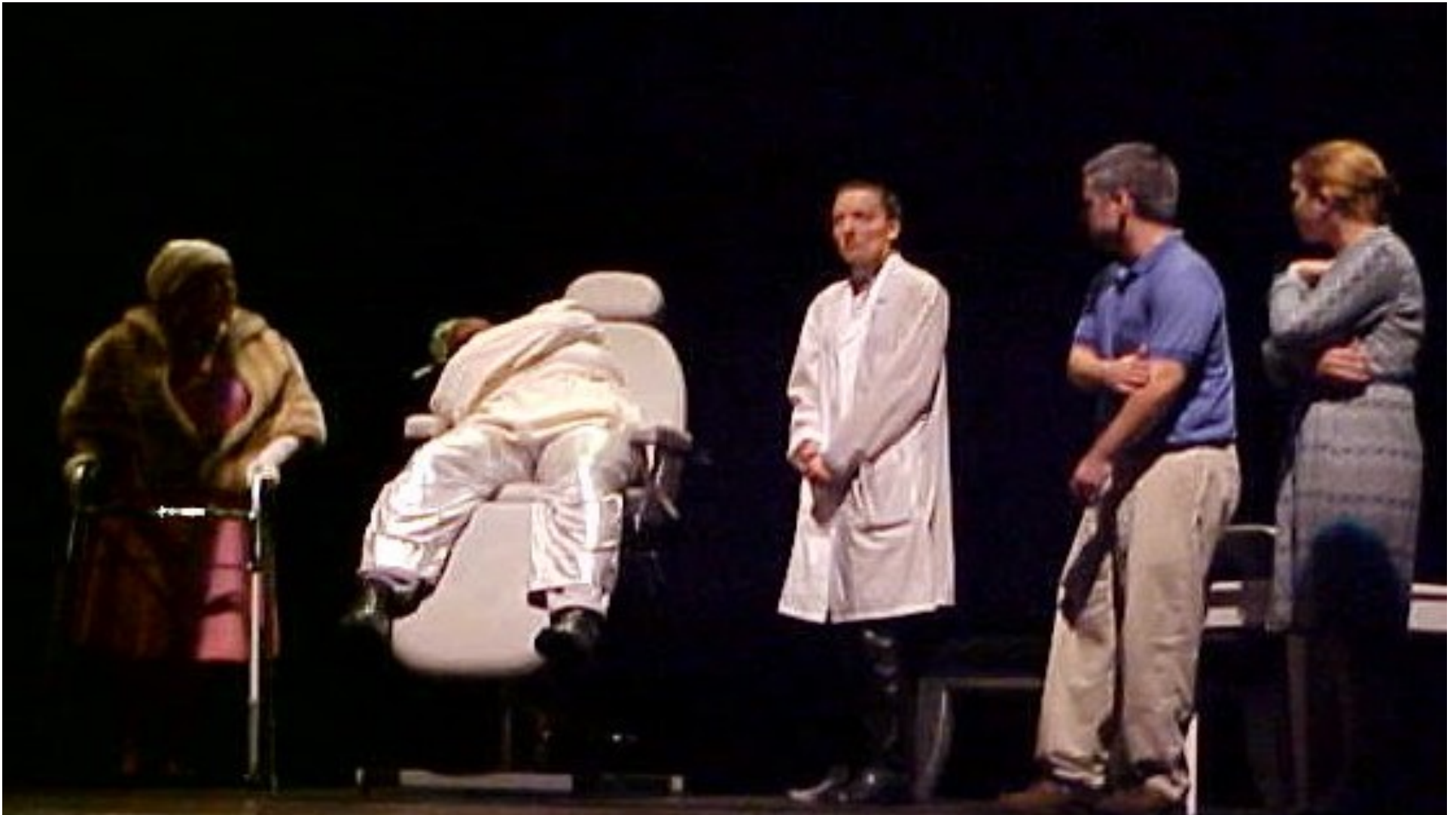


Opportunities offered by collaborators & partners



Collaborative work at inter-disciplinary level

Various efficient pedagogy methods to attract under-presented groups



Lab modules study with commercial-off-the-shelf products to connect with real world applications



Learning of research-inspired materials





Computer Science
@West Chester University

Accredited
ABET
Computing Accreditation Commission

“Mobile, Cloud Programming and Information Security”

Thursday NOV 29, 11:00 - 12:00 AM
25 UNIVERSITY AVENUE, ROOM 141

Dr. Justin Y. Shi
Associate Prof. and Associate Chair, CIS Dept.
Temple University
Founder and Chair, Parallel Computers Technology Inc.
Open to the Public

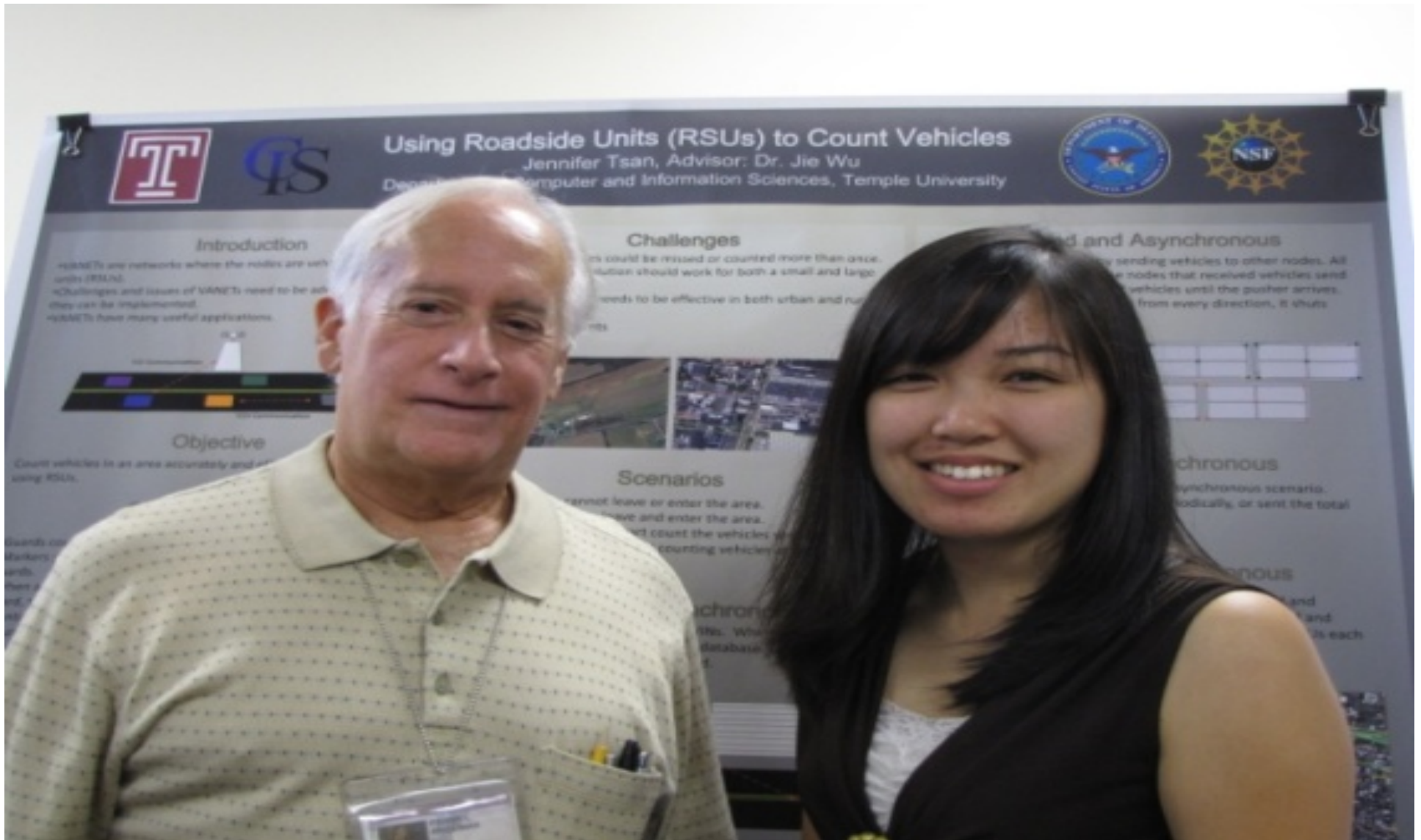
NATIONAL SECURITY AGENCY  CENTRAL SECURITY SERVICE 
Defending Our Nation, Securing The Future.

Privacy: Facebook, Twitter

Fatima Begum



Preparation for the competition at the national level (in academy)



Student engagement (e.g., sharing knowledge in community service)



Preparation for the competition at the national level (in industry)

C4ISR System Engineering

- JMPS System Engineering and Integration
- Mission Planning Innovations and Collaborative Support Tools
- Network Design and Engineering
- Integration Strategies
- Interoperability Analysis and Testing
- Automated Deployment Methodologies
- System Testing and Documentation
- System Administration

Software Engineering

- Custom Software Applications
- Web Development
- Database Development
- JAVA, C++, .NET development



Committed. Gnostech provides engineering services to the Departments of Defense and Homeland Security. Gnostech's reputation for efficiency, dependability, and customer responsiveness is due to an experienced and talented team of professionals who are dedicated to getting the job done right, on time, and within budget.

(Academic) Partners



Pedagogy method development



Sharing program, seminar,
REU, faculty exchange, and
workforce training



Sharing of curriculum



Research collaboration



(Industrial) Partners

[FAQ](#) | [C](#)



DEPARTMENT OF DEFENSE
Civilian Careers



WITH A CAREER COUNSELOR
Tuesdays and Thursdays
12:30 - 2:30 pm EST



Opportunities for **YOU**

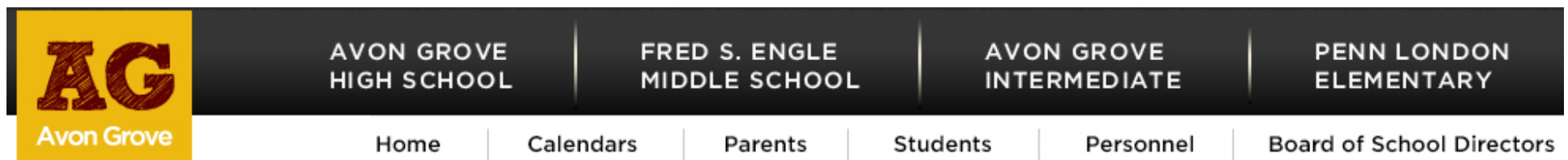
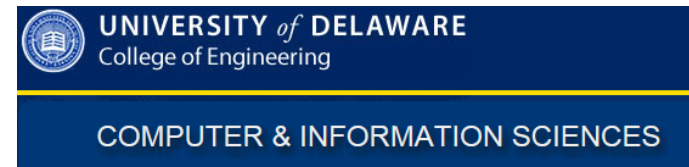
Ads by OnlineBrowserAdvertising

Ad Options

Gnostech Inc.
Knowledge. Technology. Success.



Collaborators



Future (Student-centered education)

