

WHAT CAPC IS & HOW CAPC WORKS

Fall 2018

WHAT IS “CAPC”?

CAPC is the Curriculum and Academic Policies Council

CAPC is a faculty legislative body, the only such body with authority to recommend changes to the (or creation of new) curriculum and/or academic policies

CAPC is a recommending body; the Provost has sole authority over the curriculum and academic policies

WHY ARE WE HERE?

...because CAPC is the curricular body mandated by the CBA (Article 31 section E):

“There shall be a curriculum committee at each University, which shall be selected as determined by the FACULTY, but which may include at least one (1) administrator if designated by the President.”

WHY ARE WE HERE?

APSCUF runs elections for CAPC, which involve both **at-large** and **department-specific** members.

Members are elected to do the following:

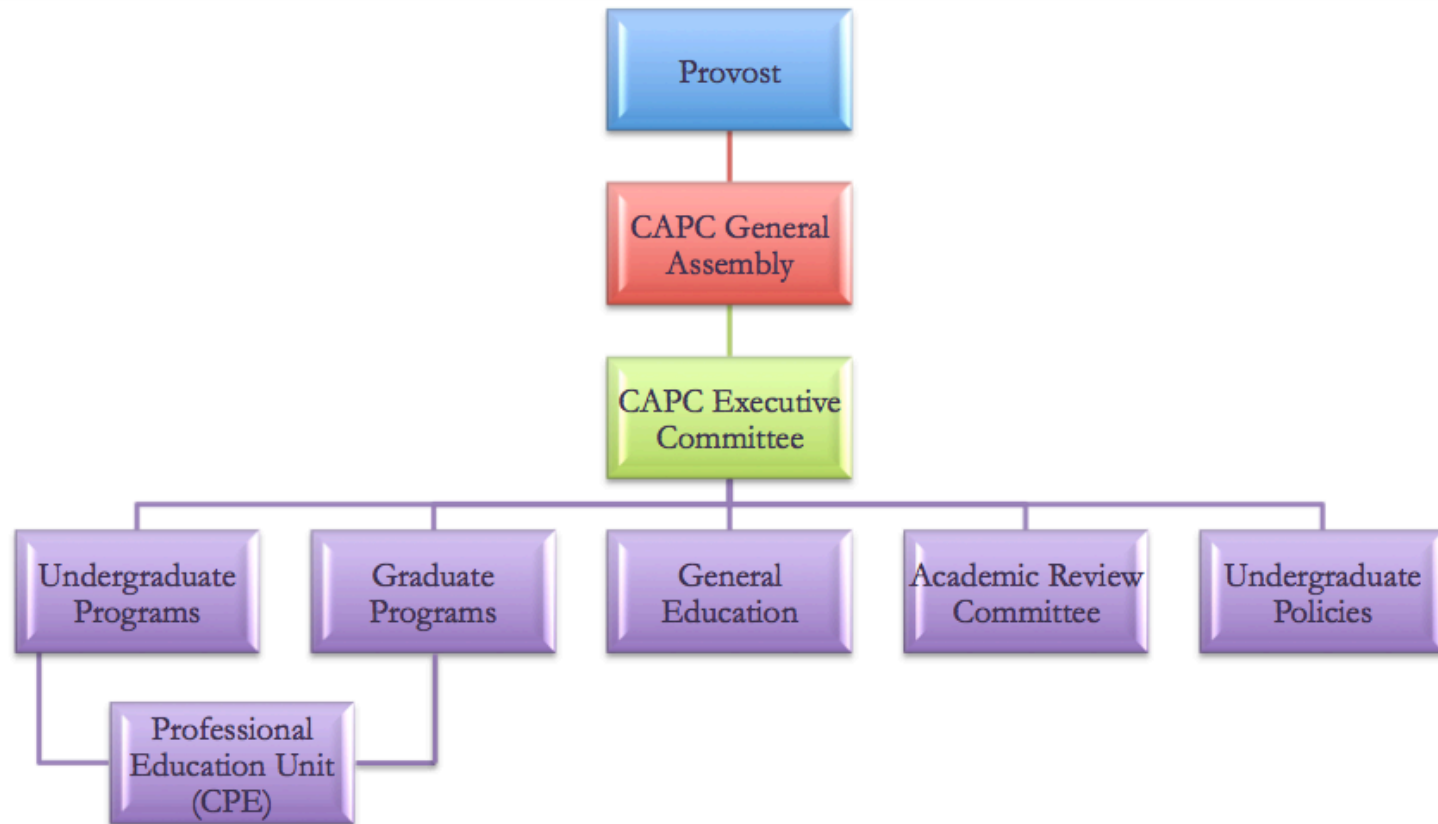
- participate in CAPC's decision-making processes around curriculum and academic policies
- report back to their constituencies (department, college, etc.) about CAPC processes and actions
- **department-specific** members also provide support and guidance for colleagues developing curriculum proposals for submission to CAPC, e.g., about learning outcomes, CIM, etc.

HOW CAPC WORKS

- Participation in decision-making processes happens through:
 - work on committees and subcommittees
 - monthly CAPC General Assembly meeting where decisions are made on the proposals sent up by the committees

HOW CAPC WORKS

Organization



2017-18 CAPC EXECUTIVE COMMITTEE

- Chair: Josh Auld, *Biology*
- Vice Chair: Rodney Mader, *English*
- Secretary: Jeremy Phillips, *Public Policy and Administration*

- Undergraduate Programs: Corinne Murphy, *Vice Provost*
- Undergraduate Policies: Francis Atuahene, *Undergraduate Studies and Student Support Services*
- Graduate Programs & Policies: Jeffery Osgood, *Senior Vice Provost & Dean of Graduate Studies*
- General Education: Carol Smith, *Literacy*
- Academic Review: Elizabeth Pfaffle, *Applied Music*

- Facilitator of the Council of Professional Education: Brent Ruswick, *History*

- CAPC Support: Andrea Grinwis, *Academic Affairs Programs & Policies Manager*

CAPC WEBSITE

WCU Home > Senior Vice Provost > CAPC

Curriculum and Academic Policies Council (CAPC) | Home

[CONTACT US](#)

[Home](#) [Committees](#) [General Education Program](#) [Meeting Dates](#) [Policies](#) [Proposals](#)

The Curriculum and Academic Policies Council (CAPC), serves two curricular purposes:

1. To develop, revise, and recommend academic creation of new, existing or elimination of existing academic programs sent by faculty.
2. To develop, revise, and recommend academic policies.

These purposes are carried out in a legislative assembly (comprised of elected faculty, elected or appointed students and administration) that recommends to the Academic Vice President and Provost curricular and academic policy matters.

CAPC exists as a shared governance body, functioning under the authority of the Pennsylvania State System of Higher Education, the Collective Bargaining Agreement between the System, APSCUF, and the System Board of Governors.

The [CAPC Executive Committee](#) meets twice a month to discuss curriculum and policy issues, as well as to generate the agenda for the monthly meetings of the general assembly.

Announcements and Updates

We are happy to announce the launch of CIM (pronounced Kim), our new curriculum management software that has been designed to support the CAPC review process. See the [Proposals](#) page of this website for more information, as well as links to training materials.

CAPC Approval List

Additional Information

- [Bylaws](#)
- [CAPC SharePoint Site](#)
- [CAPC Membership Structure 2016](#)
- [CAPC Representative Implementation Agreement 2016](#)
- [CAPC Class Size Recommendation](#)
- [Class Size Implementation Agreement](#)
- [Gen Ed Reform - Conceptual Framework 2014](#)
- [Gen Ed Reform - Proposed Program 2016](#)
- [Implementation Timelines](#)
 - [Undergraduate Catalog](#)
 - [Graduate Catalog](#)
 - [I, J, W, and DE Course Proposal Handbooks](#)

PASSHE Information

- [PASSHE Board of Governors Policies](#)
- [PASSHE Glossary of Terms](#)

■ <https://www.wcupa.edu/viceProvost/capc/>

GENERAL EDUCATION

STRUCTURE OF EXISTING PROGRAM

Academic Foundations

- Composition (6 cr.)
 - WRT120 plus one WRT200-level course
 - Public Speaking (3 cr.)
 - SPK208 or SPK230
 - Math (3 cr.)
-
- Diverse Communities (“J” courses)(3 cr.)
 - Interdisciplinary (“I” courses) (3 cr.)
 - Writing Emphasis (“W” courses) (9 cr.)

STRUCTURE OF EXISTING PROGRAM

Distributive Areas

- Humanities (6 cr.)
 - Literature, History, Philosophy
- Behavioral and Social Sciences (6 cr.)
 - Anthropology, Economics, Geography, Government, Psychology, Sociology
- Sciences (6 cr.)
 - Biology, Chemistry, Computer Science, Earth Sciences, Physics
- Arts (3 cr.)
 - Art, Film/Cinematography, Dance, Music, Photography, Theatre

REVISED GENERAL EDUCATION PROGRAM

The General Education program will change in Fall 2019

Mission Statement

A liberal arts education prepares students to think and communicate as professionals to understand the social and global contexts of their lives to transfer knowledge and skills from one setting to another, to recognize difference and make informed decisions using reasoning skills, and to balance the various dimensions of their personal and professional lives. With these important goals in mind, West Chester University's General Education Program strives to provide students with the experiences necessary to achieve the following goals:

1. communicate effectively
2. think critically and analytically
3. employ quantitative concepts and mathematical methods
4. demonstrate the ability to think across and about disciplinary boundaries
5. respond thoughtfully to diversity
6. understand varied historical, cultural, and philosophical traditions
7. make informed decisions and ethical choices

REVISED GENERAL EDUCATION PROGRAM

First Year Experience	4
Academic Foundations	
English Composition (WRT 120 and 200-level writing course)	6
Mathematics	3
Interdisciplinary	3
Diverse Communities	3
Distributive Requirements	
Science	6
Behavioral And Social Science	6
Humanities	6
Arts	3
Capstone	<i>major requirement</i>
Total Credits	40

Additional Baccalaureate Requirements

Writing Emphasis Requirements for all Baccalaureate Degrees	9
Speaking Emphasis Requirement for all Baccalaureate Degrees	9
Ethics Requirement for all Baccalaureate Degrees	3
Language and Culture Requirements for B.A., B.M and some B.S. Degrees	0-15
<i>Minimum number of total earned credits for all Baccalaureate Degrees</i>	<i>120</i>