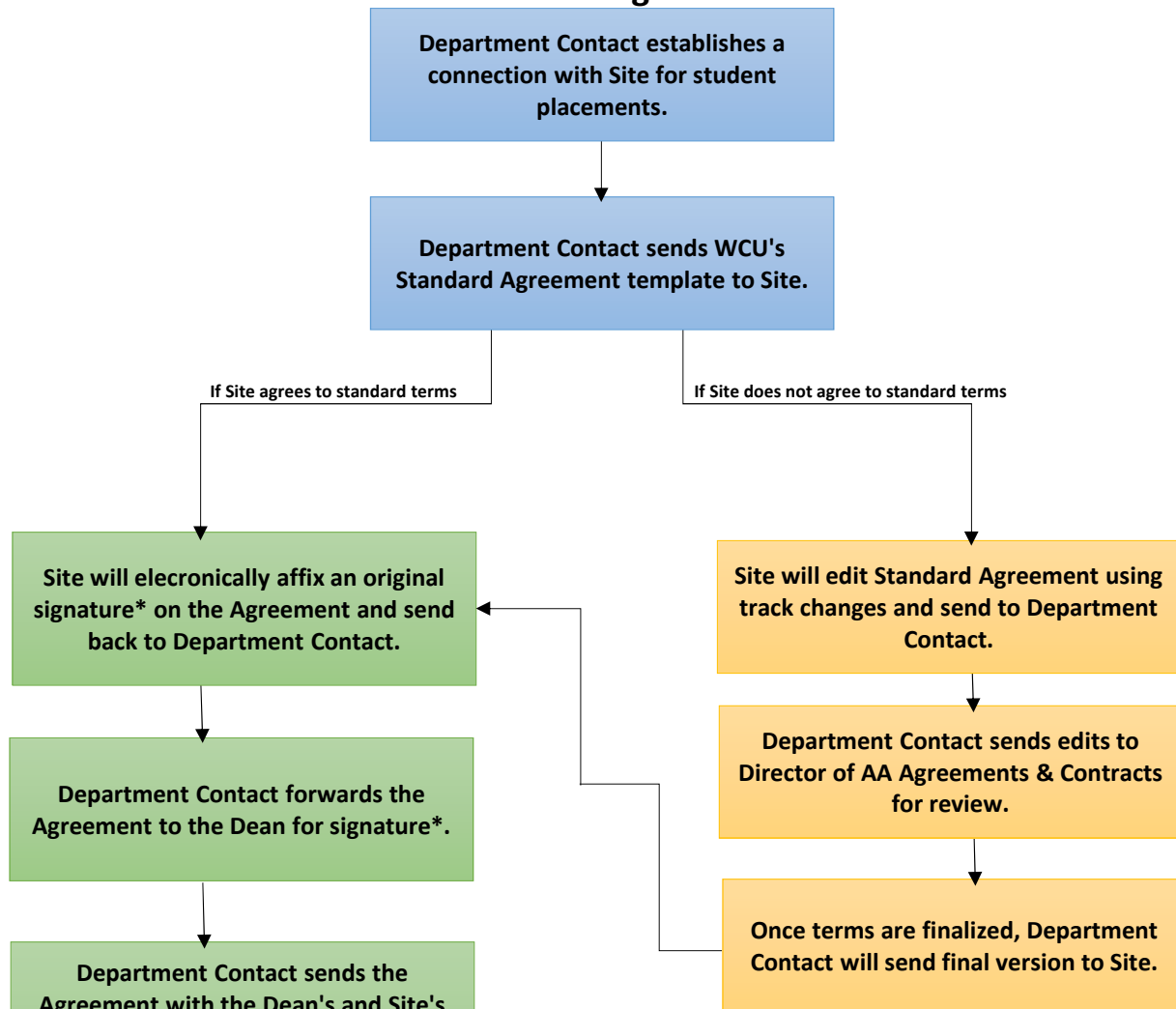


Academic Affairs Agreements & Contracts

Standard Affiliation Agreement Process



***To electronically affix an original signature use Adobe's "Fill and Sign" tool.**

A signature file can be established either by:

- cutting out a scanned signature from a PDF document

OR

- importing a photograph (i.e., take a picture of the signature, save, and upload to the Adobe signature file)

Once the signature file has been established, selecting "Fill and Sign" will make the signature available to be dragged and dropped to the signature line.

Academic Affairs Agreements & Contracts

Non-Standard Affiliation Agreement Process

